

# **MAC Report**

## **September 2019**



**SUBMITTED BY THE MARINE BUREAU**



## TABLE OF CONTENTS

1. Marinas and Waterways
2. Beaches and Waterways
3. Marine Maintenance Work Order Graphs
4. Pump Out Inspection Report
5. Tide Table



## MARINAS AND WATERWAYS

### Projects in the works

- ❖ Staff is in the process of replacing all the damaged and missing signs throughout the Long Beach Shoreline Marina. Staff has already replaced all the “Gangway” and “No Visitor” signs. 90% completed.
- ❖ Staff is in the process of obtaining the calculations and engineering plans to retrofit the existing twelve (12) booster pumps from a wet system to a dry fire suppression system in the Long Beach Shoreline Marina.
- ❖ Staff is in the process of making improvements to the Alamitos Bay Marina office including: painting the interior of the building. 50% completed.
- ❖ Staff is in the process of inspecting and tightening all the loose fingers throughout the Long Beach Shoreline Marina. 40% completed.
- ❖ Staff is in the process of replacing all the interior doors at the Alamitos Bay Marina office.
- ❖ Staff is in the process of inspecting and replacing all the damaged gangway water supply lines throughout Long Beach Shoreline Marina, as needed. 45% completed.
- ❖ Staff is in the process of repairing the restroom plumbing throughout Long Beach Shoreline Marina. 35% completed.
- ❖ Staff is in the process of installing new LED lighting in the Marine Patrol building. 10% completed.
- ❖ Staff is in the process of repairing concrete fingers throughout Long Beach Shoreline Marina. 10% complete.
- ❖ Staff is in the process of repairing all the damaged concrete behind Spinnaker Bay near the seawall.
- ❖ Staff is in the process of replacing all electrical components (breakers, receptacles, etc.) inside the pedestals located throughout Shoreline & Rainbow Harbor Marina's. 5% complete.





## **BEACHES AND WATERWAYS**

### **Accomplishments**

- ❖ Beach Maintenance staff removed over 70 tons of trash and debris from the beaches and inner bays.
- ❖ Beach Maintenance staff serviced over 150 trash receptacles during the month of September.
- ❖ Beach Maintenance staff built up and maintained the berm on the East Peninsula beach between 62<sup>nd</sup> – 72<sup>nd</sup> place, depositing over 6,000 yards of sand for the month of September.
- ❖ Beach Maintenance staff swept the bike/pedestrian path.
- ❖ Beach Maintenance staff re-nourished eroded areas at Junipero, depositing over 1,000 yards of sand.
- ❖ Beach Maintenance staff conducted weekly cleanups of several homeless encampments throughout the beach areas.
- ❖ Beach Maintenance staff re-nourished the eroded areas of the Shoreline Aquatic Park, depositing over 132 tons of sand.
- ❖ Beach Maintenance staff planted Chinese Elms at Mother's beach and Marine Stadium Park.
- ❖ Beach Maintenance staff laid 250 yards of mulch in the Marine Drive planters between 2<sup>nd</sup> and Studebaker.
- ❖ Beach Maintenance staff added new plants along the 2<sup>nd</sup> Street slope at Davies Launch Ramp, around the Model Boat Shop, Dolphin Fountain, Park entrance planters, and along the 5<sup>th</sup> Place slope fence.
- ❖ Queensway Bay staff conducted a cleaning of all 60 basket filters in the Rainbow Lagoon; six days per week, twice per day. Staff replaces and cleans all 60 baskets once a month.
- ❖ Queensway Bay staff conducted daily removal of water borne debris and algae in the Rainbow Lagoon, Rainbow Harbor Marina and Long Beach Shoreline Marina using hand nets and a small skimmer boat.
- ❖ Queensway Bay staff mowed and detailed the Rainbow Lagoon Island grass area.
- ❖ Queensway Bay staff cleaned 250' feet of main fill line with Hydro-Jet.





## **BEACHES AND WATERWAYS**

- ❖ Queensway Bay staff coordinated the installation of five (5) feet of fence along the Marina Green slopes.
- ❖ Queensway Bay staff removed trash from all the docks, three times per week.
- ❖ Queensway Bay staff conducted daily cleaning and maintenance of all trash skimmers on the docks, seven days per week.
- ❖ Queensway Bay staff conducted daily removal of water borne debris in both marinas by use of hand nets.
- ❖ Queensway Bay staff serviced and conducted daily cleaning of the public elevator.
- ❖ Queensway Bay staff cleaned the homeless encampment at Shoreline Aquatic Park.
- ❖ Queensway Bay staff replaced the glass at Light House up lighting.
- ❖ Queensway Bay staff replaced the display case lighting with new LED lights.
- ❖ Queensway Bay staff coordinated the sidewalk repairs in the Rainbow Harbor Marina.
- ❖ Queensway Bay staff completed the plaque refinishing at the Wave Fountain and Peninsula Rock.
- ❖ Queensway Bay staff worked with the Electrician to repair circuit issues at Docks 2 & 4, Birdcage down lighting, boardwalk light at Dock 4, and tree lights near the Nautilus shell.
- ❖ Queensway Bay staff repaired the railing near the Catalina Express terminal.
- ❖ Queensway Bay staff installed four (4) new signs at South Shore Launch ramp.
- ❖ Queensway Bay staff conducted daily graffiti removal of the entire Rainbow Harbor area, including the Queensway bridge bike path and the Pier Point parking lot.
- ❖ Queensway Bay staff completed and closed 31 "Go Long Beach Request for graffiti removal in the month of September.
- ❖ Queensway Bay staff replaced and installed 10 new dog bag waste stations throughout the Marina areas.
- ❖ Queensway Bay staff painted areas throughout Pike Park.
- ❖ Queensway Bay staff performed routine maintenance on the Wave and Dolphin Fountain 2-3 times per week.



## **BEACHES AND WATERWAYS**

- ❖ Queensway Bay staff conducted maintenance on the Wave Fountain filter pumps.

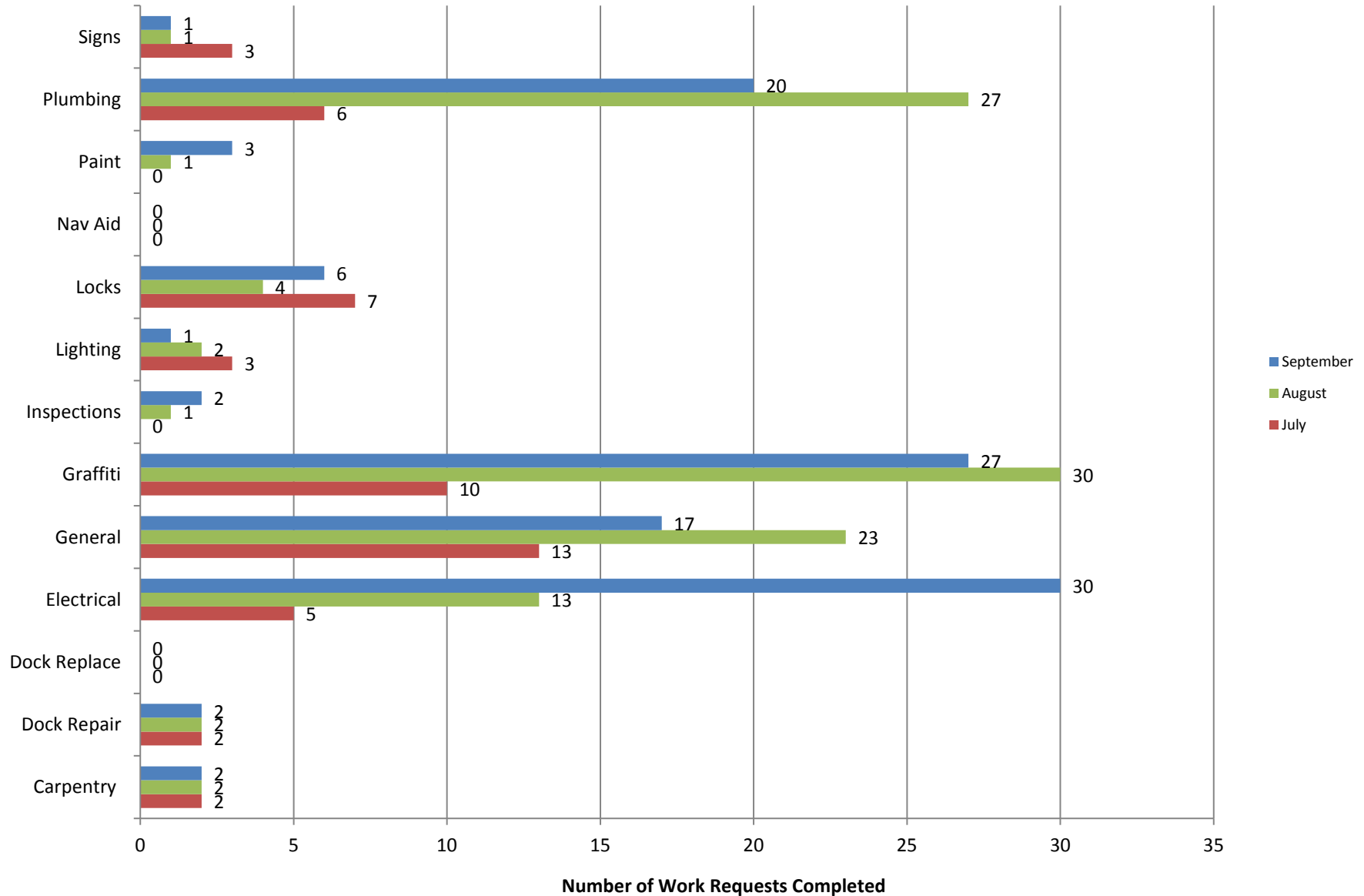
### **Projects in the works**

- ❖ Beach Maintenance staff is continuing the process of rebuilding sections of the peninsula where erosion occurs.
- ❖ Beach Maintenance staff is in the process of coordinating the tree trimming throughout the Marinas.
- ❖ Queensway Bay staff is in the process of repairing two motors and one pump at the Rainbow Lagoon vault.



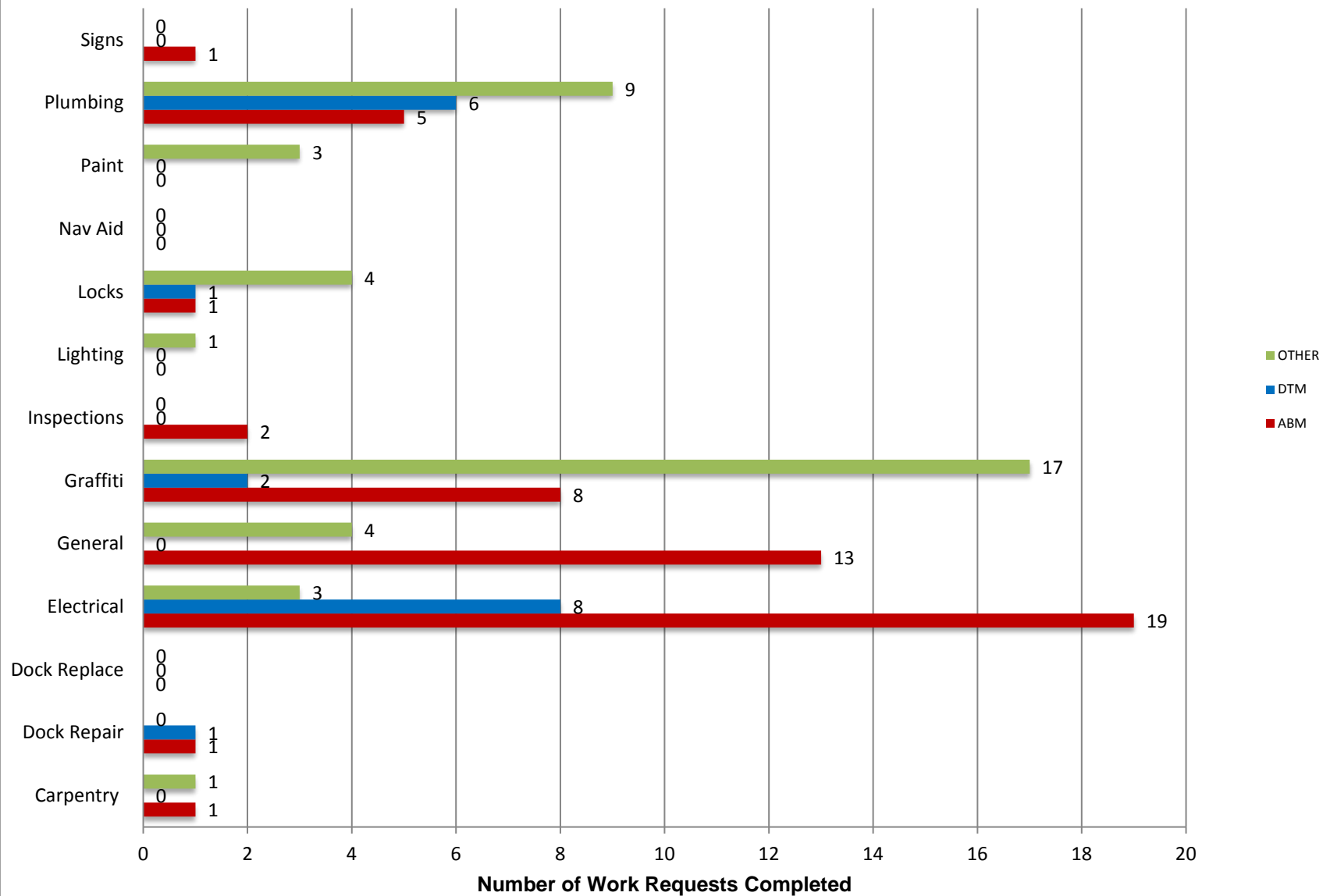
# Marine Maintenance

## Work Request Completed by Month



# Marine Maintenance

## Work Requests Completed by Location





## PUMPOUT INSPECTION REPORT

Pump Out Location	Inspection Date			
	9/05/19	9/11/19	9/19/19	9/26/19
Gwy A, A	W	W	W	W
Gwy A, B	W	W	W	W
Parker's Public Dock, A	W	W	W	W
Parker's Public Dock, B	W	W	W	W
Parker's Public Dock, C	W	W	W	W
Dock 9	W	W	W	W
Basin 6 South	W	W	W	W
Davie's Launch Ramp, A	W	W	W	W
Station 31, A	W	W	W	W
Station 31, B	W	W	W	W
Station 21	NW	NW	NW	NW
Basin 1, Gwy 2	W	W	W	W
Basin 1, Gwy 4	W	W	W	W
Basin 2, Gwy 8	W	W	W	W
Basin 2, Gwy 11	W	W	W	W
Basin 3, Gwy 16	W	W	W	W
Basin 3, Gwy 19	W	W	W	W
Basin 4, Gwy 28	W	W	W	W
Basin 4, Gwy 31	W	W	W	W
Basin 5, Gwy 33	W	N/A	W	W
Basin 5, Gwy 34	W	W	N/A	W

KEY
W = Working
NW = Not Working
N/A = Not Applicable

# California, Los Angeles, Long Beach, Inner Harbor

October 2019

N 33° 46.3' / W 118° 12.6'

