



**long beach**  
airport

where the going is easy®

**Public Affairs Highlights and Initiatives  
July and August 2019**

**Government Affairs:**

1. Organized a tour for 16 interns from the Long Beach City Prosecutor's Office. The tour included meeting Airport and TSA officials, an airfield perimeter tour, and a visit to Gulfstream.
2. Participated in a panel to interview applicants for Youth Leadership Long Beach's class of 2020
3. Participated in City Manager's Communications / Social Media Monthly Meeting

**Community Outreach:**

1. Volunteers distributed Long Beach Airport 95<sup>th</sup> Anniversary promotional items to passengers as they enjoyed the LGBLive! summer series
2. Supported numerous community groups in July and August, including Cal Ripken Regional Little League, by providing over 900 LGB promotional items
3. Participated in Civic Center Grand Opening, July 29
4. Volunteers led six tours of the airport for approximately 130 people in July and two tours for approximately eight people in August
5. Participated in Long Beach Parks, Recreation, and Marine's All-City Beach Day, August 9
6. Planned and supported Special Olympics of Southern California's annual Plane Pull and We Run the City events, August 17
7. Continued planning the 2019 Festival of Flight which will be held Saturday November 2, 10:00 a.m. to 4:00 p.m.

**Media:**

1. Huntington Beach contracts with Irvine aviation consultant to study airplane noise, *Los Angeles Times*, July 2
2. Mid-Year Economic Outlook: Southern California Aviation/Aerospace Entities Tout Economic Growth For Rest of 2019, *Long Beach Business Journal*, July 2
3. Traffic Rises at Region's Airports, *Los Angeles Business Journal*, July 5
4. Huntington Beach to Study Lower Aircraft Noise Over the City, *Voice of OC*, July 9
5. Why a DC-8 flew so low over Long Beach this week, *Long Beach Post*, July 18
6. Rice cooker triggers bomb squad response at airport parking structure, *Long Beach Post*, July 23
7. 50 Years of Special Olympics in Southern California; 31 Years of Golf in Long Beach, *Gazettes.com*, July 26
8. Long Beach Airport Teams Up with Motiv To Announce New Partnership at the JetBlue Long Beach Marathon, *Running USA*, August 5

9. Long Beach Airport Traffic Down, *Orange County Business Journal*, August 6
10. 14<sup>th</sup> Annual plane pull is set for August 17 to raise money for Special Olympics, *The Event News Enterprise*, August 7
11. Elinor Otto, an original Rosie the Riveter, says tearful goodbye to Long Beach, *Long Beach Press-Telegram*, August 8
12. Long Beach Airport Passenger Traffic Slides After JetBlue Pullback, *Los Angeles Business Journal*, August 8
13. Long Beach Teams Pull Big Plane for Special Olympics, *Gazettes.com*, August 14
14. Black Women Execs Recognized and Celebrated in Sisterhood, *Los Angeles Sentinel*, August 15
15. Gulfstream Gets Kudos for Use and Promotion of Biofuels, *Business Aviation News*, August 15
16. LB Airport Pulls Double Duty for SOSC, *We Are SOSC.com*, August 15
17. Airline faces criminal charges for violating Long Beach Airport's noise ordinance, *Long Beach Press-Telegram*, August 16
18. City files criminal charges against airline, alleging repeated violations of Long Beach Airport noise ordinance, *Long Beach Post*, August 16
19. LB City Prosecutor Files (Unusual But Not Unprecedented) Misdemeanor Criminal Complaint Alleging Violations Of LB's Airport Noise, Cites Mesa Airlines (Which Provides Regional Service For American Airlines Under "American Eagle" Banner), *LBReport.com*, August 16
20. Special Day for the Special Olympics Southern California at Long Beach Airport (Link to Video), *Long Beach Local News*, August 17
21. Photos: A challenge of epic proportions: groups take shot at pulling huge jet in the name of raising funds for Special Olympics in Long Beach (Link to scrolling photos), *Southern California News Group / Long Beach Press-Telegram*, August 17
22. Special Olympics Southern California Fundraises with Plane Pull and USC vs UCLA Run (Link to four video segments; live during the event), *KTLA5.com*, August 17
23. Mass Shooting Plot Near California Airport Thwarted, Police Say, *NBC News*, August 21
24. BizBrief Today's News To Know - LGB Attributes Decrease In Passenger Traffic To Slot Reallocation, *Long Beach Business Journal*, August 23
25. Bubble Watch: Southern California airport passenger growth cools off, *Orange County Register*, August 27
26. LAX Passenger Traffic Eked Out 0.4% Gain in July, but International Traffic Dipped, *Los Angeles Business Journal*, August 27
27. F/A-18s will be flying over Long Beach as part of Fleet Week, *Long Beach Post*, August 28
28. John Wayne, LAX, San Diego ranked among top airports in U.S., *Orange County Register*, August 29
29. Military aircraft to operate out of Long Beach Airport this weekend, *Orange County Breeze*, August 29
30. Social Media

- Notable events in July: 4<sup>th</sup> of July
- Facebook is up to 17,147 likes in July
  - The best post in July had a reach of 5,828 with 108 reactions, comments, and shares
- Twitter is up to 12,784 followers in July
  - The best tweet in July generated 7,473 impressions, 7 retweets, and 40 likes
  - Tweets in July generated 89,000 impressions
- Instagram is up to 6,265 followers in July
  - In July, posts averaged 133 likes each
  - The most popular post earned 235 likes and 2,243 impressions
- Notable events in August: Special Olympics Southern California Plane Pull, All-City Beach Day
- Facebook is up to 17,146 likes in August
  - The best post in August had a reach of 5,741 with 222 reactions, comments, and shares
- Twitter is up to 12,855 followers in August
  - The best tweet in August generated 6,436 impressions, 5 retweets, and 22 likes
  - Tweets in August generated 100.8K impressions
- Instagram is up to 6,427 followers in August
  - In August, posts averaged 161 likes each
  - The most popular post earned 253 likes and 3,183 impressions

#### **Arts/Entertainment/Display:**

1. LGBLive! Summer Concert Series continued with performances Thursdays and Fridays in the concourse and near the terminal building
2. “CSULB SOARS@LGB”, a temporary rotating exhibit produced in collaboration with California State University Long Beach School of Art continued; exhibits “Drifting” by Jojo Solo and “Collection” by Amy Williams are on display
3. LGB95 Selfie Sign remains on display in the concourse

#### **Advertising/Marketing:**

1. Continued integrating 95<sup>th</sup> Anniversary branding into the communications strategy
2. Press-Telegram, Newspapers in Education sponsor
3. Angels Baseball, Big A signage, July 15 - 28 and August 19 – 31
4. Long Beach Business Journal, quarter page, full color ad, July 16 – 29 issue
5. Adopt-A-Highway, 405 Freeway signs
6. Campaign *Spare Change Changes Everything* continues at Long Beach Airport
7. 95<sup>th</sup> Anniversary pole banners remain on display at the Donald Douglas loop
8. Graphics for construction panels were installed south of the terminal
9. Long Beach Business Journal’s Civic Center publication, half page, full color ad, July 30
10. Planning for JetBlue Long Beach Marathon sponsorship began in July



4100 E. Donald Douglas Drive, Second Floor, Long Beach, CA 90808  
T 562.570.2600 F 562.570.2601 [lgb.org](http://lgb.org)





Over 1200 participated in the  
Special Olympics Southern California  
We Run The City 5K/10K  
at Long Beach Airport







Over 70 teams participated in the  
Special Olympics Southern California  
14<sup>th</sup> Annual Plane Pull at Long Beach Airport







4100 E. Donald Douglas Drive, Second Floor, Long Beach, CA 90808  
T 562.570.2600 F 562.570.2601 [lgb.org](http://lgb.org)

## Facebook post with the most reach in July:

**Long Beach Airport**

Published by Lindsey Ann [?] · July 5 ·

From 1988–2000, the McDonnell Douglas facility in Long beach produced 200 MD-11s. Here we can see an old photo from the cockpit of the MD-11 and a look back at the maiden flight out of LGB.

**Performance for Your Post**

**5,828** People Reached

**108** Reactions, Comments & Shares

<b>80</b> Like	<b>39</b> On Post	<b>41</b> On Shares
<b>3</b> Love	<b>3</b> On Post	<b>0</b> On Shares
<b>13</b> Comments	<b>4</b> On Post	<b>9</b> On Shares
<b>12</b> Shares	<b>10</b> On Post	<b>2</b> On Shares

**248** Post Clicks

<b>93</b> Photo Views	<b>0</b> Link Clicks	<b>155</b> Other Clicks
--------------------------	-------------------------	----------------------------

**NEGATIVE FEEDBACK**

<b>6</b> Hide Post	<b>0</b> Hide All Posts
<b>0</b> Report as Spam	<b>0</b> Unlike Page

Reported stats may be delayed from what appears on posts

## Most liked Twitter post in July:

**Long Beach Airport**

@LBAirport

The Herc flying over Long Beach this past weekend - what a sight to see. 🇺🇸 **#C130**  
**#AVgeek**

11:54 AM - 1 Jul 2019

7 Retweets 40 Likes



Most liked Instagram post in July:



Facebook post with the most reach in August:

Post Details

**Long Beach Airport**  
Published by Lindsey Ann [?] · August 29 at 12:42 PM · 🌐

On this day in 1970 – the McDonnell Douglas DC-10 prototype made its first take off from Long Beach Airport. ✈️

**Performance for Your Post**

**5,741** People Reached

**222** Reactions, Comments & Shares

163 Like	63 On Post	100 On Shares
10 Love	7 On Post	3 On Shares
1 🤔 Haha	0 On Post	1 On Shares
7 😮 Wow	3 On Post	4 On Shares
24 Comments	2 On Post	22 On Shares
17 Shares	16 On Post	1 On Shares

**223** Post Clicks

42 Photo Views	0 Link Clicks	181 Other Clicks
----------------	---------------	------------------

**NEGATIVE FEEDBACK**

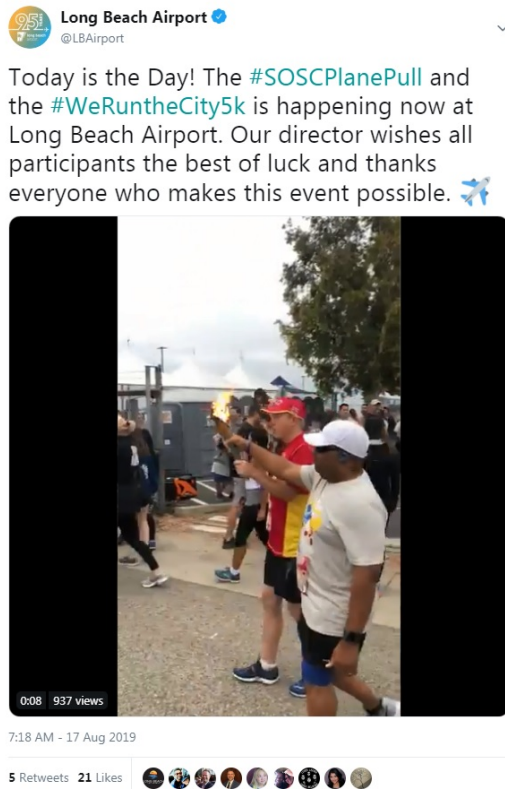
6 Hide Post	0 Hide All Posts
0 Report as Spam	0 Unlike Page

Reported stats may be delayed from what appears on posts

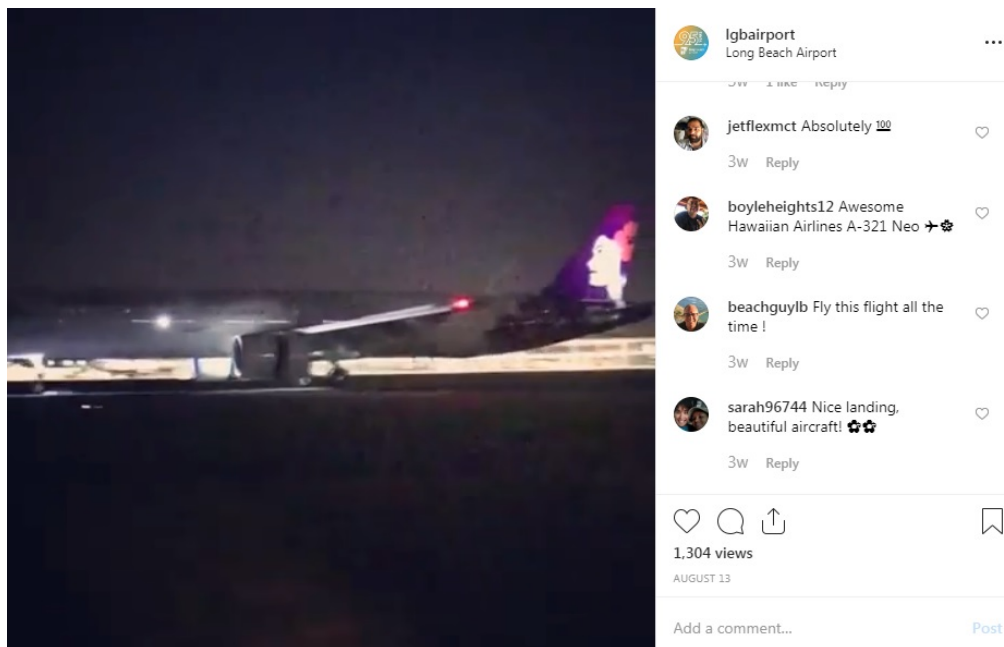
👍👍👍 Jonas Bodell, Kevin Cleary and 70 others

2 Comments 16 Shares

## Most liked Twitter post in August:



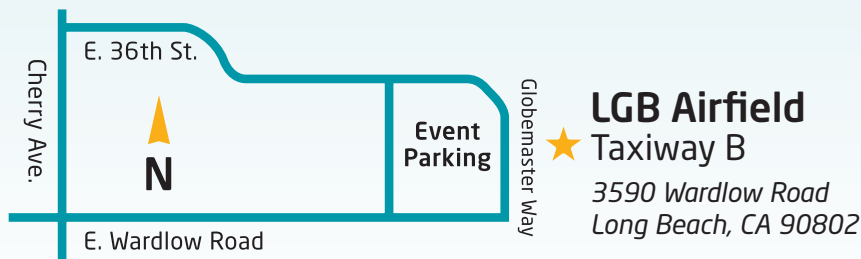
## Most liked Instagram post in August:





**November 2, 2019**  
**10 a.m.-4 p.m.**

**Join us for the Festival of Flight**, a free celebration featuring food and beer trucks, static aircraft and vehicle displays, and live entertainment.



**long beach**  
 airport

**anniversary**  
 celebration **95**

*For more information: 562-570-2678 or [flylgb@longbeach.gov](mailto:flylgb@longbeach.gov) | No pets, bags or coolers allowed. Bags subject to search.  
 We encourage you to rideshare or use public transportation.*

## DAILY PILOT

Decades ago, he stole a tree branch. Now he is the Durian King



Video shows violent family fight at Disneyland as stunned parkgoers try to...



Trump officials tell one court Obamacare is failing and another it's thriving



ADVERTISEMENT

 **THERE'S A NEW JOB BOARD IN TOWN THAT MAKES HIRING EASIER THAN EVER**  **LEARN MORE**

the job network  
Los Angeles Times

DAILY PILOT NEWS

DAILY PILOT

# Huntington Beach contracts with Irvine aviation consultant to study airplane noise

By PRISCILLA VEGA  
JUL 02, 2019 | 11:45 AM



A map shows flight paths for planes heading over Huntington Beach to Long Beach Airport. (Courtesy of city of Huntington Beach)

An Irvine-based aviation consultant is partnering with Huntington Beach to conduct an analysis that may be submitted to the Federal Aviation Administration as part of the city's efforts to address residents' concerns about increased airplane noise.

On a 6-0 vote, with Mayor Erik Peterson absent, the City Council authorized Landrum & Brown to conduct a series of tests and compile the results into a report for the city as part of a six-month, \$48,370 contract. Funding for the project will come from the city manager's budget.

ADVERTISEMENT

The consultant will work with staff at Long Beach Airport to monitor and measure existing noise levels at locations selected by Huntington Beach officials.

Landrum & Brown also will collect flight data at various points along the flight path to show existing and proposed altitudes for aircraft heading to Long Beach. The "glide slope" analysis must be done and submitted to the FAA before changes can be made to arrival patterns, according to a city staff report.

ADVERTISEMENT



Aircraft typically fly into airports using a path on a 3-degree glide slope to apply minimal power to the engines, according to Landrum & Brown. Those that fly below that path may use more power, which increases noise and burns more fuel.

Landrum's management consultant, Christian Valdes, told the council Monday that the firm's report could serve as a document that Long Beach Airport could propose to the FAA as a permanent procedure.

Mayor Pro Tem Lyn Semeta asked Valdes if such studies have been successful elsewhere. Valdes said it isn't common in the United States for communities to gather resources to prove a glide slope. He cited a Seattle community that collaborated with the airport there to maintain the 3-degree glide slope.

Assistant to the City Manager Antonia Graham told the council that she and Councilman Patrick Brenden — one of the liaisons to the city's Jet Noise Commission — began meeting with Long Beach Airport staff in 2017 to try to facilitate a collaborative approach to benefit all parties.

Graham said the airport director told them the FAA would be open to altering approaches to the airport but that the city would have to do some work.

FAA spokesman Ian Gregor declined to comment Tuesday about "a study that hasn't been done, or speculate on any actions we may or may not take in the future."

Huntington Beach residents have increasingly complained about airplane noise — most of it linked to Long Beach Airport — since the FAA implemented regional flight path alterations in 2017. City officials, though, have said the issue dates as far back as 2007.

More than two dozen air routes have historically passed over Huntington Beach, according to the FAA.

Nearby cities Newport Beach and Laguna Beach sued the FAA in 2016 and reached settlements last year over noise related to John Wayne Airport, though residents are still upset with the amount of airplane noise in the area.

Huntington Beach's interim city manager, Dave Kiff, described the partnership with Landrum as having “remarkable potential.”

Brenden said “most people across the country have tried suing the FAA and ran into a door being slammed in their face. ... We saw from the very beginning that ... we needed to approach this in a collaborative standpoint.”

Airplanes are supposed to fly above Huntington Beach at 1,600 feet but frequently are seen coming in at 1,300 feet or lower, Brenden said. If planes followed the 3-degree slope, they would come in at a minimum of 2,200 feet, he said.

Support our coverage by becoming a digital subscriber.

---

Priscella Vega



---

Priscella Vega is the Huntington Beach reporter for the Daily Pilot. Before joining the Pilot in February 2017, she worked for the Daily Breeze covering the Palos Verdes Peninsula and for the Long Beach Press-Telegram as a general assignment intern. She earned her journalism degree from Cal State Long Beach. (714) 966-4617

---

ADVERTISEMENT

---

## COMMENTS (1)

---

### LATEST DAILY PILOT

---

#### DAILY PILOT LIFE AND ARTS

BobaTEAque bubbles up after love story steeps in another tea shop

2h



---

#### DAILY PILOT LIFE AND ARTS

Nixon Library will open its Apollo 11 exhibit to the public on the 50th anniversary of the moon landing



# Southern California Aviation/Aerospace Entities Tout Economic Growth For Rest Of 2019

■ By DENNY CRISTALES  
Staff Writer

## Long Beach Airport

Claudia Lewis, interim director of Long Beach Airport, said airline traffic is projected to hit 3.6 million passengers this year, up from the airport's average of 3.1 million over the past 10 years, but below last year's record high of nearly 4 million.

Lewis attributed the forecasted decrease in airline traffic to JetBlue Airways' underutilization of supplemental flight slots, but said the numbers will go back in 2020 when the slots are permanently reallocated and accounted for in the full calendar year. Long Beach Airport recently released airline traffic data for May 2019 that showed an 11.7% decrease compared to May 2018.

Cargo traffic is also expected to increase, Lewis said. Projected 2019 cargo landings are expected to total 532, compared to last year's 530, and cargo weight is expected to reach 22,897 tons, up from last year's 21,635 tons. In the airport's recent report, May 2019 numbers were up by 2.8% compared to May 2018.

Lewis' short-term priorities for the airport involve a smooth transition to new director Cynthia Guidry, who begins work on July 29. Long-term developments include the Phase II Terminal Area Improvements project, which includes a new ticketing facility, baggage claim area and pre-security concessions. It is scheduled for completion in 2021.

## Aeroplex/Aerolease

Curt Castagna, president and CEO of Aeroplex/Aerolease Group, said business aviation firms continue to excel nationally. His group's focus for the second half of 2019 is set on developments at Van Nuys Airport and out-of-state facilities to promote economic growth and sustainability efforts.

Part of the firm's priorities for sustainability programs involve utilizing solar power and alternative jet fuel. Castagna said Aeroplex/Aerolease has led sustainability efforts in Van Nuys, where the Los Angeles Department of Water and Power provides "great incentives for such a private-public partnership."

Castagna said the redevelopment of airport-adjacent Douglas Park and, eventually, the defunct Boeing C-17 manufacturing facilities will provide a welcome and "continued evolution of the Long Beach economic base." He added, "[They will] bring a new corporate presence that will result in business-aircraft operations for those pri-

vate equity and Fortune 500 operators who use business aircrafts and will wish to utilize Long Beach Airport."

## Boeing

On June 17, at the Paris Air Show in France, Boeing officials released the company's market outlook, indicating that the international aerospace and defense market will be valued at \$8.7 trillion over the next decade, up from last year's projections of \$8.1 trillion.

Boeing's Commercial Market Outlook also projected that commercial airplane fleets worldwide will be able to sustain a high need for aviation services. The global airplane market is currently valued at \$9.1 trillion. If strong demand continues, Boeing officials said the total commercial market opportunity can reach an estimated amount of \$16 trillion through 2038.

Rudy Duran, site manager at Boeing, said this projected growth will spur high demand for talent in Southern California, since the need for manufacturing will increase. "We are aggressively pursuing new hires across the board to meet not only needs for 2019, but beyond, as well," Duran said. "Overall, Boeing in Long Beach is an active, very busy location."

Duran said the Boeing teams in Long Beach and Southern California also support engineering design work and provide global customer support and services for airline customers.

## Gulfstream

Home to nearly 900 employees, the Gulfstream Aerospace Corporation's site at Long Beach Airport anchors the company's West Coast operations, according to Thomas Anderson, vice president and general manager of Gulfstream Long Beach.

In 2018, the site added nearly 100 employees, many of whom were hired to eventually be transferred to Gulfstream Van Nuys, which is scheduled to begin operations in the third quarter of 2019. Anderson said the goal is to maintain work progress in Long Beach while preparing the soon-to-open location in Van Nuys.

Anderson said Gulfstream Long Beach also provides mobile response technicians to Van Nuys Airport and Hayward Executive Airport in their respective locations of Southern and Northern California, in addition to Seattle's Boeing Field. These technicians make up the field and airborne support teams for those areas.

While Gulfstream Van Nuys will focus on typical aircraft maintenance, Gulfstream Long Beach will handle

"more involved" support. The Long Beach site includes a sales and design center and completion area, focusing on exterior painting and interior installation work, for the corporation's flagship aircraft, the Gulfstream 650ER and the Gulfstream G650.

"Gulfstream Long Beach is also the home of a service center and supports all in-service Gulfstream aircraft, which number more than 2,750 worldwide," Anderson said. "In May, the site began regular sales of sustainable alternative fuel to operators who bring their aircraft in for service."

Anderson said the aircraft company is focused on continuing the success of the Gulfstream G500 – which entered service in September 2018 – and the certification of its sister ship, the Gulfstream G600.

## Hawaiian Airlines

Brent Overbeek, senior vice president of Hawaiian Airlines, said com-

munity response to the implementation of direct flights from Long Beach to Honolulu on June 1, 2018, has been positive. Overbeek said the airline has flown 100,000 passengers since it began its non-stop service between Long Beach and Honolulu.

"Our load factors have been in the low 80% [range] during our first year, and we are encouraged by increased demand leading up to the start of the summer season and beyond as more travelers become aware of our service," Overbeek said. Load factors indicate an airline's average passenger occupancy.

Hawaiian Airlines' main priority is to expand its service between Hawaii and the U.S. mainland and other international locations by the end of 2020, Overbeek said. "We recently announced our intention to launch new service between Fukuoka in Japan and Honolulu starting in November, ex-

(Please Continue to Page 30)

BOULEVARD



BUICK



GMC



2800 Cherry Avenue Signal Hill (562) 492-1000



Cadillac



2850 Cherry Avenue Signal Hill (562) 595-6076

BOULEVARD4U.com





Long Beach area airlines and fixed-base operators indicated that economic development will thrive for the rest of 2019, with efforts being placed on sustainable energy and site expansions. (Photograph by Brandon Richardson.)

(Continued from Page 29)

panded service between San Francisco and Honolulu starting in October and received approval to operate additional service between Haneda [Tokyo] and Honolulu – which we plan to begin next spring.”

Ross Aviation

Greg McQueary, general manager of Ross Aviation, said business has fared well, specifying that fuel uplift – the amount of fuel transferred from trucks or tanks to aircrafts – has increased by 28% compared to this time last year.

“Fuel prices have become volatile over the last month due to issues with refineries,” said McQueary, who said the problems included issues like fires and loading-dock issues. However, he said Ross Aviation is working with its suppliers to mitigate the issues and keep fuel prices stable.

Ross Aviation’s focus for the rest of year will be on capital investments and infrastructure developments, specifically work on a new hangar. “[We’re] improving our leasehold by demolishing some of the oldest hangars on the airfield and replacing them with one larger hangar,” he said. “By investing in the new hangar, we will create a better image for the area, but also expand the available space private and corporate aircrafts have to park at the Long Beach Airport.

McQueary projected an increase in sales of fuel and rented space at the airport, but could not provide an exact projection or timeline for the hangar project by press time.

Southwest Airlines

Southwest Airlines is expected to continue its business expansion at Long Beach Airport after garnering additional flight slots earlier this year,

said Adam Decaire, Southwest Airlines’ vice president of network planning. The airline offers 16 departures a day to five cities out of Long Beach Airport, per a fact sheet emailed to the Business Journal.

According to Brad Hawkins, South-

west’s senior advisor of communications, the airline has published a Long Beach and systemwide flight schedule through early January, but is not able to discuss projected numbers of passengers carried or future pricing. However, Decaire did express optimism for

the airline’s business.

“We’re grateful for the successes our Southern California customers have facilitated at Long Beach Airport, allowing us to grow the amount of foundational service through additional slots,” Decaire said. ■



GLOBAL LOGISTICS SPECIALIST

OFFERED ON CAMPUS OR ONLINE

Learn how to navigate complex global supply chains in CSULB’s award-winning Global Logistics Specialist (GLS) program. This innovative program offers a unique opportunity to learn from and interact with industry leaders who will prepare you for new career opportunities in the ever-changing world of global trade.

Register Today!

CALIFORNIA STATE UNIVERSITY, LONG BEACH  
Center for International Trade and Transportation [www.cpie.csulb.edu/GLS3](http://www.cpie.csulb.edu/GLS3) (562) 985-2872

# LOS ANGELES BUSINESS JOURNAL

THE COMMUNITY OF BUSINESS™  
(/)

[Lists \(/lists/\)](#)

[Health Care \(/news/healthcare/\)](#)

[Real Estate \(/news/real-estate/\)](#)

[Finance \(/news/finance/\)](#)

[Manufacturing \(/news/manufacturing/\)](#)

[Tech \(/news/technology/\)](#)

[Infrastructure \(/news/government/\)](#)

[Travel/Leisure \(/news/travel-leisure\)](#)

[Media \(/news/media-entertainment/\)](#)

[Professional Services \(/news/services/\)](#)

[Events \(/bizevents/\)](#)

[Custom Features \(/supplements/\)](#)

WE ARE THE BANC FOR  
THE SPORTS INDUSTRY

[LEARN MORE](#)



BANC OF  
CALIFORNIA

FDHS

## Traffic Rises at Region's Airports

### TRANSPORTATION: LAX, Ontario lead monthly increase in airline travelers

By Howard Fine ([/staff/howard-fine/](#))

Like 1

Share

[in](#) Share

Tweet Friday, July 5, 2019





(/photos/2019/jul/05/45136/)

Let's Fly Away: LAX saw a bump in its number of passengers in May, continuing a trend that began in January. Photo by Ringo Chiu (/staff/ringo-chiu/).

Passenger traffic edged up at local airports in May as Los Angeles International Airport — the region's largest — posted a nearly 1% gain, and Ontario International Airport saw an 8% jump in passengers.

The increase was tempered by a 12% drop in passengers at Long Beach Airport, which continued to experience fallout from the decision by JetBlue Airways Corp. to sharply scale back operations there.

Overall 8,394,150 passengers went through the three airports in May, up 68,000 — or 0.8% from May 2018.

LAX accounted for all of this numeric gain in passengers, as the jump of roughly 36,000 passengers at Ontario was effectively canceled out by the drop of approximately the same amount at Long Beach.

A 25% jump in international passenger traffic led the growth at Ontario. Taiwan-based China Airlines Ltd. inaugurated transoceanic service there roughly a year ago.

At Long Beach, JetBlue passenger traffic was down 38%. The New York-based airline curtailed operations there last summer after a failed bid to launch international service from the airport. Even with the cutbacks, JetBlue still comprised roughly 54% of May's passenger traffic at Long Beach. Southwest Airlines more than doubled its May passenger traffic at Long Beach to more than 90,000 this year from less than 45,000 in 2018.

Hollywood Burbank Airport is due to report May passenger data this week. In April, passenger traffic there rose 10.6% to 486,027 compared to the same month last year.

Similar trends bore out when looking at total passenger traffic during the first five months of 2019 compared to the same period last year.

LAX passenger traffic over those five months rose by 349,000 — or 1% — from last year to top 35 million. Ontario passenger traffic rose by 117,500 — or 6% — to top 2.1 million. But Long Beach Airport passenger counts fell by 266,000 — or 16% — to 1.4 million.

Overall, passenger traffic at the three airports rose by 200,000 — or 0.5% — during the first five months of this year to reach 38.5 million.

For reprint and licensing requests for this article, [CLICK HERE](https://info.wrightsmedia.com/licensing-reprints-request?magazine__name=Los%20Angeles%20Business%20Journal) ([https://info.wrightsmedia.com/licensing-reprints-request?magazine\\_\\_name=Los%20Angeles%20Business%20Journal](https://info.wrightsmedia.com/licensing-reprints-request?magazine__name=Los%20Angeles%20Business%20Journal)).

## Stories You May Also Be Interested In

Passenger Traffic at LA-Area Airports Up in 2018  
([news/2019/jan/28/passenger-traffic-la-area-airports-2018/](/news/2019/jan/28/passenger-traffic-la-area-airports-2018/))

Local Airport Passenger Volume Mixed in September: LAX, Ontario Up, Long Beach Down  
([news/2018/oct/31/local-airport-passenger-volume-mixed-september-lax/](/news/2018/oct/31/local-airport-passenger-volume-mixed-september-lax/))

Flying High  
([news/2019/feb/08/flying-high/](/news/2019/feb/08/flying-high/))

Long Beach Airport Passenger Traffic Slides After JetBlue Pullback  
([news/2019/aug/08/long-beach-airport-passenger-traffic-continues-sli/](/news/2019/aug/08/long-beach-airport-passenger-traffic-continues-sli/))

Airport Traffic Up in Long Beach, Ontario  
([news/2018/jul/24/airport-traffic-long-beach-ontario/](/news/2018/jul/24/airport-traffic-long-beach-ontario/))

Airline May Land Long Beach for International  
([news/2016/oct/28/airline-may-land-long-beach-international/](/news/2016/oct/28/airline-may-land-long-beach-international/))

LAX Passenger Traffic Up 1% in First Half of 2019, Ontario Up 6.5%  
([news/2019/jul/30/lax-passenger-traffic-nearly-1-first-half-year-ont/](/news/2019/jul/30/lax-passenger-traffic-nearly-1-first-half-year-ont/))



61<sup>st</sup> annual

SOUTHERN CALIFORNIA JOURNALISM AWARDS



## Voice of OC Reporter Nick Gerda Honored as LA Press Club's Online Journalist of the Year

### AIRPORT NOISE

## Huntington Beach to Study Lower Aircraft Noise Over the City



JESSICA RUIZ, Voice of OC

The Huntington Beach Civic Center.

By **MIRANDA ANDRADE** ([HTTPS://VOICEOFOC.ORG/AUTHOR/MANDRADE/](https://voiceofoc.org/author/mandrade/)) **4 hours ago**

Huntington Beach officials are moving to investigate the noise impacts from nearby Long Beach Airport.

Residents living under the flight path complained to city council members about late-night jet noise, low-flying aircrafts and pollution caused by air traffic.

"I can't go [outside] anymore. It's constant. It's not just until 11 p.m., it's until 1:30, 2:30 and [even] 3 a.m.," said Ann Palmer, a Huntington Beach resident, told the council Monday, July 1 during public comment period of the biweekly city council meeting. "I urge you to look up some of these [jet pollution] health risks."

Out of 19 public commenters, seven spoke to the council to urge them to do more about air traffic over the city. Residents cited Long Beach Airport, LAX and John Wayne Airport as reasons for increased noise.

Some residents said they have seen planes flying as low as 1,100 feet in Huntington Beach, and others commented that they are woken up by jet noise during late hours. The Long Beach Airport does not allow airlines to fly after 11 p.m., according to the [airport's fact sheet](http://bit.ly/2XIQffn) (<http://bit.ly/2XIQffn>) on the airport's noise policy.

"I love Huntington Beach, but what has been happening over my house the past two years is insanity," Andrea Pace, a Huntington Beach resident, told council. "I watch 1,000 planes a day come over my house, [they] do U-turns over my house, it's very disruptive, it's very low [and] it's very unsafe. It is ridiculous."

Council members unanimously agreed, with Mayor Erik Peterson absent for the vote, to fund a study looking at the flight paths of planes landing onto the runways at Long Beach Airport.

The analysis – called a glide slope study – will be carried out by aviation planning and development firm Landrum & Brown and will have professionals monitor current noise levels at locations chosen by the city. The six-month contract will cost the city \$48,370.

According to city staff, a glide slope of 3-degrees is the Federal Aviation Administration's (FAA) approved path for planes and jets preparing to land. Councilman Patrick Brenden said that drafting a glide slope analysis will help the city require planes flying into Long Beach Airport to maintain a minimum altitude of 2,200 feet while flying over Huntington Beach.

"It means that planes will be even higher [going] across Huntington Beach. You get two benefits here, [the planes] are higher so the decibel impact is reduced slightly," Brenden said. "More importantly, if [pilots follow] a 3 degree glide slope, they can basically throttle back as soon as they get to Huntington Beach and they can glide to the airport with no thrust or very little thrust."

Aircraft following a 3 degree glide slope apply less power to engines before landing on their flight strip, according to a [Landrum & Brown report](http://bit.ly/2FNR24K) (<http://bit.ly/2FNR24K>) presented at the July 1 meeting.

Ryan McMullan, a noise and environmental affairs officer for Long Beach Airport, said the airport receives the majority of their complaints from the Sea Cliff Country Club area in South Huntington.

“We’re kind of letting Huntington Beach lead the way on this [study], and when they’re requesting data [from] us we’re more than happy to provide it.” McMullan said over the phone Monday.

According to the [staff report](http://bit.ly/2Ntcmm5) (<http://bit.ly/2Ntcmm5>), the glide slope analysis must be submitted to the FAA before any changes can be made to Long Beach Airport arrivals. Brenden said holding a glide slope analysis is a step toward a solution that benefits not just residents, but Long Beach Airport and the FAA.

“With this solution that we are envisioning, the airlines win because they’re spending less fuel, the residents win because there’s less fuel and less emissions and the FAA is happy because [the planes are on] a glide slope that’s safe.” Brenden said.

*Miranda Andrade is a Voice of OC reporting intern and can be reached at [mandrade@voiceofoc.org](mailto:mandrade@voiceofoc.org) (<mailto:mandrade@voiceofoc.org>).*



- ADVERTISEMENT -



NASA's DC-8 Airborne Science Lab did some air-testing in Long Beach on Wednesday. Photo courtesy of NASA.

[TIM GROBATY](#)

29 MINUTES AGO

# Why a DC-8 flew so low over Long Beach this week

[Tim Grobaty](#)

33

NASA caused a bit of concern with a couple of low-altitude flyovers of its DC-8 at Long Beach Airport and Downtown Long Beach on Wednesday.

Space Force! Mars! The Moon! Spies!

In fact, the flights involved the more down-to-Earth matter of student research with its passenger list of undergraduate students taking part in the eleventh year of [NASA's Student Airborne Research Program](#).

Flying aboard [NASA's DC-8 airborne laboratory](#), Tuesday and Wednesday, students sampled and measured atmospheric gases to study pollution and air quality, according to NASA's Armstrong Flight Research spokeswoman Kate Squires.

The Palmdale-based plane can carry 30,000 pounds of scientific instruments and equipment and can seat up to 45 experimenters and flight crew.

In addition to its local flyovers, the students flew as low as 1,000 feet over dairies, oil fields and wineries throughout the L.A. basin, the San Joaquin Valley, the Santa Barbara Channel and the Salton Sea in order to collect air samples and measure atmospheric gases such as methane and ozone.

The 28 student researchers majoring in sciences, mathematics and engineering who are participating in the eight-week program are hosted by the University of California, Irvine, where they will analyze the data they've collected, along with data gathered by participants in earlier Student Airborne Research Programs to compare them with current observations.

LAWN-TO-GARDEN

GROW LOCAL LOVE

The Lawn-to-Garden (L2G) program supports and incentivizes landscape conversions from thirsty and non-functional grass to beautiful, water-wise gardens.

Visit [lawn2ogarden.com](#)

Long Beach Water

- ADVERTISEMENT -

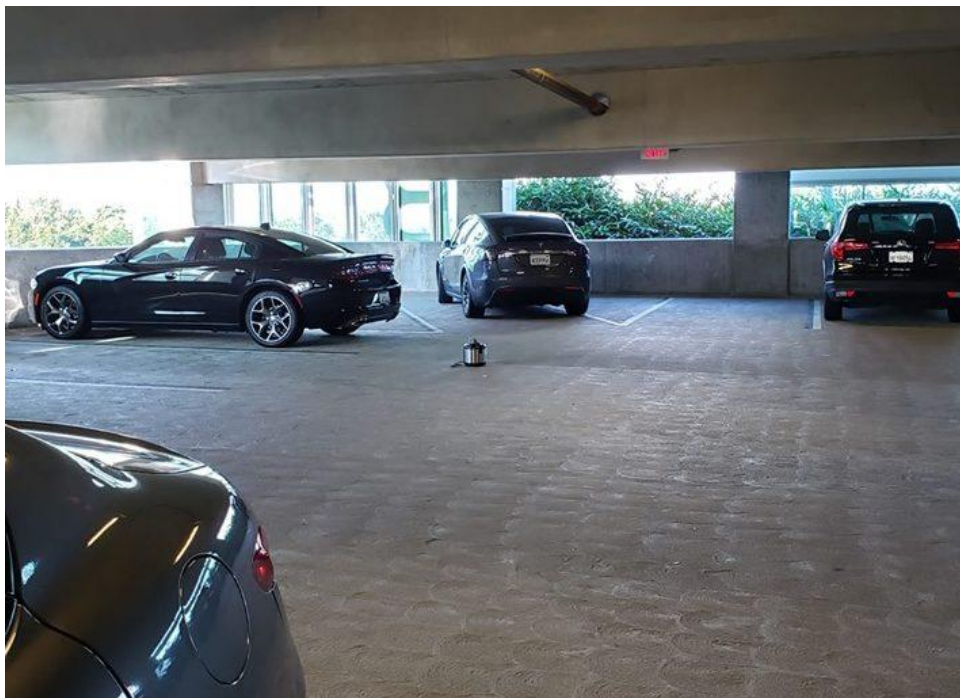
## Support our journalism.

Hyperlocal news is an essential force in our democracy, but it costs money to keep an organization like this one alive, and we can't rely on advertiser support alone. That's why we're asking readers like you to support our independent, fact-based journalism. We know you like it—that's why you're here. Help us keep hyperlocal news alive in Long Beach.





- ADVERTISEMENT -



A rice cooker that was left unattended in a Long Beach Airport parking structure triggered a bomb scare on Monday, July 22, 2019. Photo courtesy of James Gleeson.

[LONG BEACH AIRPORT](#)

JUL 23 12:40 PM

## Rice cooker triggers bomb squad response at airport parking structure

 Valerie Osier  595

A rice cooker left inside a Long Beach Airport parking structure on Monday evening triggered a police response and a bomb scare.

Police got a call about the unattended item at about 6:40 p.m., LBPD spokeswoman Shaunna Dandoy said. Officers surrounded the second floor of the parking structure and checked the area, finding no other items, according to the department.

A bomb squad from the Los Angeles County Sheriff's Department determined the item wasn't dangerous at about 9:50 p.m., Dandoy said. The appliance was filled with cooked rice, she said.

The incident did not affect airport operations.



## Nonprofits

[Home](#) / [Entertainment](#) / [Nonprofits](#)

[http://www.gazettes.com/entertainment/nonprofits/years-of-special-olympics-in-southern-california-years-of-golf/article\\_7350bf58-ad6d-11e9-a481-6762b952119e.html](http://www.gazettes.com/entertainment/nonprofits/years-of-special-olympics-in-southern-california-years-of-golf/article_7350bf58-ad6d-11e9-a481-6762b952119e.html)

# 50 Years Of Special Olympics In Southern California; 31 Years Of Golf In Long Beach

By Harry Saltzgaver

Executive Editor

5 hrs ago



Special Olympics athletes hold up five fingers at the 2018 Summer Games to signify the beginning of the 50th anniversary.

—Photo by Jim Cayer



Special Olympics of Southern California — actually Special Olympics all over the West Coast — is in the midst of celebrating its 50th birthday.

That year-long party is more than half over, with the Southern California Summer Games last month at Cal State Long Beach one of the big highlights. More than 12,000 people attended over the weekend, with more than 1,100 athletes competing.

There still are two big events in Long Beach, both fundraisers for the local chapter and both in August. The annual plane pull, on Aug. 17 this year, where teams of 25 try to pull a 124,000-pound jet across the Long Beach Airport tarmac. There's a 5K/10K that same day. For more, go to <http://bit.ly/2SCujOk>.

Closer in time, and in the hearts of many Long Beach Special Olympics volunteers, is the 31st Betty Nordholm Classic Golf Tournament on Aug. 2. The tournament is named after Betty Nordholm, who was a 30-year Special Olympics volunteer, and who died 20 years ago, in 1999.



Long Beach's team enters Saturday during the parade for the Summer Games put on by Special Olympics of Southern California at Long Beach State University.

—Gazette photo by Howard Freshman

"SOSC and the entire movement would not enjoy success today without the vision, passion and generosity of the Nordholm family," said Bill Shumard, Special Olympics of Southern California. "It is such a privilege to have their daughter, Elyse Garcia, significantly involved up to this very moment."

Eunice Shriver launched Special Olympics in 1968 on the East Coast in order to give people with intellectual disabilities the chance to compete in sports. The next year, Olympian Rafer Johnson established the program in Southern California, giving the area its 1969 "birth" date. He has continued to be involved in the games here.

For the first 26 years, the organization covered the entire state as the California Special Olympics. In 1995, the split to create Northern and Southern California chapters occurred. In 2007, Special Olympics of Southern California moved its headquarters to Long Beach, where it remains today.

Today, Special Olympics Southern California works with 37,800 athletes through sports, education, and athlete health. The goal, officials say, is to provide year-round athletic training and competition along with health checkups and assistance, and more.

The group's motto, which athletes recite before competitions, sums up the approach to sports. "Let me win, but if I can't win, let me be brave in the attempt." Camaraderie and interaction with others is as important as the competition.

"Mrs. Shriver's brilliant idea of changing the lives of people with intellectual disabilities has had an incredible impact on the entire world over the past half-century," Shumard said. "The simple power of sports has provided confidence, physical fitness and a sense of joy and courage to all who participate. However, the real benefit comes to all of us who are fortunate enough to share the joy with our athletes."

That goes all the way down to the local level, according to Heather Badgett, chair of the Nordholm Classic. Long Beach has its own chapter so Long Beach athletes don't get left behind, she said.

"We do the plane pull and the golf tournament, " Badgett said. "All of the money we raise stays in Long Beach. It's all used for transportation to the practices and events... We have some of our athletes at the golf tournament, and they remember you even though you only see them once a year."



Nordholm was the Area Director of Long Beach Special Olympics for 30 years. Her daughter, Elyse Garcia, has carried her mother's tradition on, and will be at the golf tournament on Aug. 2.

There still are spots available for golfers. Entry is \$175 a golfer and includes golf, tee prizes and a steak dinner. Jeff Severson, former pro football player and current band leader, is the host for the day.

For more information or to register for the tournament, go to [www.sosc.org](http://www.sosc.org).

---

## Harry Saltzgaver

Harry has been executive editor of Gazette Newspapers for more than 26 years. He has been in the newspaper business for more than 35 years, with experience on both weekly and metropolitan daily papers in Colorado and California.

Sign in



## Long Beach Airport Teams Up with Motiv To Announce New Partnership at the JetBlue Long Beach Marathon

*Marathon to celebrate 35 years in Long Beach the weekend of October 11-13, 2019*

Long Beach, CA – August 5, 2019 – The **Long Beach Airport** (LGB) and **Motiv** today announced a new partnership for the 2019 **JetBlue Long Beach Marathon & Half Marathon**. Southern California's premier fall marathon will welcome more than 15,000 participants to the oceanfront streets of Long Beach the weekend of October 11-13, 2019.

“Motiv assumed management of the JetBlue Long Beach Marathon in 2017 and has since worked hard to uphold its high standards and increase its visibility in the



community year-round,” said **Alex Bennett**, Executive Race Director. “We are proud to enter into this partnership with the Long Beach Airport, which is such an important institution that defines the Long Beach community. We invite all runners to experience the tradition and excitement of the JetBlue Long Beach Marathon in October.”

Both LGB and the marathon have built outstanding reputations in the local community, each sharing common values when it comes to marketing and promoting the City of Long Beach. Working together, their

goal is to make the JetBlue Long Beach Marathon even more successful by enhancing the experience for runners, spectators and everyone involved.

“We’re thrilled to be teaming up with one of the city’s iconic events like the marathon as we broaden our commitment to the local community and commemorate our yearlong 95th anniversary celebration,” said **Cynthia Guidry**, Long Beach Airport Director. “We’re looking forward to a terrific event that brings runners, spectators, airport employees and the community together in a positive and memorable way.”

The JetBlue Long Beach Marathon has been one of the most popular and respected marathons in the country for over thirty-five years. The 26.2-mile scenic course showcases the city’s miles of sandy beaches and unique neighborhoods. Last year, over 15,000 runners, walkers and bike tour participants registered for the event. This year’s event will be held on the weekend of October 11-13, marking its 35th anniversary.

For more information on the 35th JetBlue Long Beach Marathon and Half Marathon or to register for the event, visit [RunLongBeach.com](https://RunLongBeach.com) and follow the JetBlue Long beach Marathon on social media [@LBMarathon](https://twitter.com/LBMarathon) with hashtag [#RunLongBeach](https://twitter.com/RunLongBeach).

## About Long Beach Airport

Founded in 1923 as the first municipally-owned airport in California, Long Beach Airport (LGB) began its yearlong 95th anniversary celebration in 2018. A new passenger concourse opened to the public in 2012 and has since garnered extensive praise for its modern design and architecture, local eateries and easygoing travel experience. Recently, Sunset magazine awarded LGB with a Best of 2017 Travel Award. In addition, USA Today and 10Best.com recognized LGB for Best Airport Dining in their Readers Choice poll. LGB offers nonstop service to several U.S. cities while supporting a healthy general aviation community with over 260,000 annual operations. The airport is also a source of substantial economic activity and employment. Long Beach Airport and its tenants generate more than \$10 billion and 45,000 jobs in total economic activity to the Long Beach region with an additional \$1.1 billion in tax revenue at the federal, state, and local levels. Long Beach Airport prides itself in maintaining a safe, sustainable, and environmentally responsible operation. For more news, pictures, videos, and announcements of what's happening, "Like" us on [Facebook](https://www.facebook.com/LBAirport), or follow us on Twitter [@LBAirport](https://twitter.com/LBAirport) and Instagram [@lgbairport](https://www.instagram.com/lgbairport).

## About Motiv

We are Motiv, a leading global event business who own and operate events and festivals in the U.S, Australia and the UK. We entertain, challenge and engage over 375,000 event attendees every year. Proud producers of some incredible events including the Surf City Marathon, JetBlue Long Beach Marathon, Napa to Sonoma Wine Country Half Marathon, Sydney Running Festival, Nautica Malibu Triathlon, Philadelphia Love Run and the 50th Anniversary Denver Oktoberfest to name just a few. We believe in partnering with events and like-minded businesses that engage, inspire and make a difference in the lives of the audiences that enjoy them. Learn more at [MotivGroup.com](http://MotivGroup.com).

Connect with us



Where the endurance community connects

Membership Application »

© 2019 © Running USA All Rights Reserved [Privacy Statement](#):



# ORANGE COUNTY BUSINESS JOURNAL

THE COMMUNITY OF BUSINESS™  
(/)

## Long Beach Airport Traffic Down

By Katie Murar (/staff/katie-murar/)

Tuesday, August 6, 2019

Like 2

Share



Tweet



Email (/mailfriend/81/197383/7c81539f7a/)



(/photos/2017/nov/27/29494/)

Long Beach Airport Photo by Ringo Chiu (/staff/ringo-chiu/).

Long Beach Airport traffic decreased 13% year-over-year in June to 307,000 passengers; year-to-date traffic is down nearly 16% to 1.7 million passengers.

JetBlue Airways represented 53% of total traffic, carrying 163,000 passengers, down 38% from the year prior. Southwest more than doubled its count to 104,000 passengers, making up 34% of the total.

Hawaiian Airlines carried about 11,000 passengers and the facility's two other airlines, American and Delta, carried about 29,000 combined.

Cargo flown by FedEx and UPS dipped 4.8% in the month to 1,775 tons. Charter flying from Long Beach dropped 23% to 220 passengers last month.

# 14th Annual plane pull is set for August 17 to raise money for Special Olympics

By For Event-News Enterprise - 08/07/2019



*Saturday, August 17 is sure to be an action-packed and meaningful day, and you won't want to miss it. At the Long Beach Airport, Special Olympics Southern California will host two incredible fundraisers that are estimated to raise a total of \$450,000 total.*

Saturday, August 17 is sure to be an action-packed and meaningful day, and you won't want to miss it. At the Long Beach Airport, Special Olympics Southern California will host two incredible fundraisers that are estimated to raise a total of \$450,000 total. Join us as we compete for bragging rights and pull a plane.

The 14<sup>th</sup> annual Plane Pull will test participant's strength and endurance as teams of 25 pull a 124,000-pound UPS jet. Just up the runway, UCLA and USC fans will take to the streets to race for pride and Special Olympics in the 5K/10K rivalry run.

Last year's Plane Pull raised more than \$190,000 dollars for Special Olympics Southern California. To get involved you can create a team, sign-up individually, donate, or become a sponsor. Teams are made up of 25 people, but don't worry if you can't complete your team. Individual pullers will be added to teams of less than 25 people on the day of the event. The minimum amount of money for a team to fundraise is \$1,500. As an individual, the fundraising commitment is \$60. Sign up at [www.sosc.org/lbplanepull](http://www.sosc.org/lbplanepull).

"The Plane Pull is a very unique and fun way to support Special Olympics Southern California athletes," said SOSC President and CEO Bill Shumard. "It is all about teams competing against each other to pull more than a plane – we're also pulling for inclusion for people with and without intellectual disabilities. We are pulling for each other."

To donate to the Plane Pull, you can support a team, a participant, or make a general donation. As a sponsor, you can raise awareness for athletes with intellectual disabilities, expand your customer reach, and build team morale. Sign up to conquer the Plane Pull at [www.sosc.org/lbplanepull](http://www.sosc.org/lbplanepull).

"The Plane Pull has grown to be more than just pulling a plane," said Shumard. "It is a family-friendly event, offering something for everyone. It is such a great way to be a part of our movement of inclusion and acceptance, while helping us serve more athletes, changing their lives, the lives of their families, and of the community."

We Run the City 5K/10K is an exciting event featuring USC and UCLA students, faculty, alumni and fans who compete for bragging rights and to take home the We Run the City Trophy. Each runner/walker must declare their allegiance at the time of registration and whether they are an alumnus, faculty, fan, staff, or student. They are then a part of Team USC or Team UCLA. Competition is broken into three categories: amount of runners/walkers, fundraising, and the school that has the first 100 runners to

cross the finish line. The school that wins at least two out of three, claims victory and their school has bragging rights and the trophy for the year!

Those interested in participating can walk/run in the 5K or 10K or participate in the kid's race. If you can't make it out to the event, you can register for the virtual race. Learn more at [www.werunthecity.com](http://www.werunthecity.com).

---

---

**For Event-News Enterprise**

LOCAL NEWS

## Elinor Otto, an original Rosie the Riveter, says tearful goodbye to Long Beach



Elinor Otto, 98, affectionately known as Rosie the Riveter, walks away from a C-17, after taking a flight for a local air refueling and aeromedical evacuation proficiency training mission on Monday, Dec. 19, 2017 at March Air Reserve Base in Moreno Valley. Otto began building airplanes in 1942, as one of the first of millions of women who filled jobs vacated by men who were called to service during the war, commonly referred to as "Rosie the Riveters." (Stan Lim, The Press-Enterprise/SCNG)

By RICH ARCHBOLD | rarchbold@scng.com | Press-Telegram

PUBLISHED: August 8, 2019 at 5:11 pm | UPDATED: August 8, 2019 at 5:14 pm

Elinor Otto, one of the original Rosie Riveters, looked longingly at old posters, photos, awards and other memorabilia from her more than 60 years helping build thousands of airplanes in Southern California.

Surrounded by packing boxes, two cats and her dog Blue, in her home in Bixby Knolls, Otto, 99, spoke emotionally Wednesday, Aug. 7, about leaving Long Beach to live in Las Vegas.

ADVERTISING





"I just hate to leave Long Beach," she said. "I love Long Beach so much."

Otto had been living with her grandson, John Perry, 48. But he died unexpectedly in his sleep, from congestive heart failure, in March. Otto had lost her only son, John's dad, seven years ago.

The loss of her beloved grandson was devastating to her, both emotionally and financially.

After much soul searching, she decided to move to Las Vegas and live with her great-niece, Brenda Wynne, who will move herself from Midwest City, near Oklahoma City.

"I feel very nostalgic and have so many fond memories of Long Beach," Otto said. "But I have to move forward, and I want to thank and am so grateful for my family, friends and former co-workers, many of whom are gone now."

If you want to say goodbye to Otto, a final, informal farewell party for her is set for 7 p.m. Saturday, Aug. 10, at, appropriately, Elinor, one of Long Beach's newest drinking hotspots at MADE by Millworks, on Pine Avenue.

Heather Kern, the bar's creative director, came up with the name to honor Otto, and to celebrate women and the history of Long Beach.

"We wanted to honor barrier-breaking women and the city of Long Beach; Elinor was a natural fit," Kern said. "We are honored to celebrate Elinor with a going away party and super excited about planning her 100th birthday here in October!"

Otto turns 100 on Oct. 28.

On Saturday, Otto will sign autographs, pose for photos and talk with friends and fans.

"I'm looking forward," she said, "to meeting as many people as possible before I leave Long Beach next week."

Otto will have plenty to talk about. Her life could be made into a Hollywood movie.

At 22, she was recently divorced, with a young son. She needed a job badly. The United States has just entered World War II after being attacked by Japan at Pearl Harbor on Dec. 7, 1941.

Otto heard about a job driving rivets to build airplanes at the Rohr Aircraft Corp., in Chula Vista. She knew nothing about using a rivet gun, but that didn't stop her from applying and getting hired — at 65 cents an hour. She became one of the original Rosie the Riveters hired to build fighter planes during World War II.

"I learned fast," she told me. "It was on-the-job training, and we worked hard because we wanted to win the war."

After the war, she was laid off along with thousands of other women.

She tried other office jobs and even a carhop job at a local drive-in, but none satisfied her desire for more activity, nothing matched building planes.

She had even been offered auditions to be in movies, but she turned them down, saying, "I don't act in movies; I build planes."

She returned to aviation riveting work in 1951 for Ryan Aeronautical Corp. in San Diego and stayed there until she was laid off in 1964.

Then she got a call from a friend in Long Beach, who said Douglas Aircraft was hiring. So she moved to Long Beach. That started an almost 50-year career at Douglas, which became McDonnell Douglas and eventually Boeing. During this period, she worked on Douglas commercial jets and, finally, the C-17.

After nearly a half-century working at the Long Beach plant, she was laid off in 2014 when C-17 production ended. Last year, when I interviewed her, she said, "Don't say I retired. They laid me off."

She still has the same rivet gun she used on all of the 279 Boeing C-17 Globemaster III cargo planes she helped build at the Long Beach plant before production ended. In her legendary aviation career, she has helped build thousands of World War II fighter plane and commercial airline jets, in addition to the C-17.

Her favorite planes, she said, included the Lockheed P-38 Lightning, the B-17 bomber and the C-17. Although she worked on all of the C-17s, she had never flown in one until two years ago, when she flew in the cockpit of a C-17, which took off from March Air Reserve Base in Riverside.

She noted proudly that the majority of the crew members were women.



In 2014, then-state Assemblywoman Bonnie Lowenthal honored Otto as the 70th Assembly District Woman of the Year.

"Elinor Otto was a trailblazer during World War II and she hasn't stopped since," Lowenthal said. "She's still a force to be reckoned with and a role model for all of us."

The American Veterans Center, headquartered in Arlington, Virginia, will honor Otto at a dinner when she turns 100.

Otto is proud of her role in breaking down barriers for women in the workplace. She has become a role model and inspiration for countless young girls.

She likes telling the story of a young girl who came up to her and said, "You're my hero!" But Otto doesn't think of herself as a hero.

"I was just doing my job like thousands of other women," she said. "I am humbled and honored by the recognition."

In talks to groups, especially women, Otto says she is proud of what she and the other "Rosies" accomplished and how far women have come since then.

"We made history," she tells them. "Now it's your turn."

---

[Sign up](#) for The Localist, our daily email newsletter with handpicked stories relevant to where you live. [Subscribe here.](#)

---

---

Tags: [Rich Archbold columns](#), [Top Stories LBPT](#)



SPONSORED CONTENT

## Weekly Tips and Insights

By Merrill



The Bulletin: Financial Insights That Matter Most To You



## Rich Archbold

Rich Archbold is public editor of the Press-Telegram. Archbold, who arrived in Long Beach in 1978, was the longtime executive editor of the Press-Telegram and managing editor before that. He writes a weekly column and coordinates the Press-Telegram's myriad community connections.

[VIEW COMMENTS](#)

## Join the Conversation

We invite you to use our commenting platform to engage in insightful conversations about issues in our community. Although we do not pre-screen comments, we reserve the right at all times to remove any information or materials that are unlawful, threatening, abusive, libelous, defamatory, obscene, vulgar, pornographic, profane, indecent or otherwise objectionable to us, and to disclose any information necessary to satisfy the law, regulation, or government request. We might permanently block any user who abuses these conditions.

If you see comments that you find offensive, please use the "Flag as Inappropriate" feature by hovering over the right side of the post, and pulling down on the arrow that appears. Or, contact our editors by emailing [moderator@scng.com](mailto:moderator@scng.com).



# LOS ANGELES BUSINESS JOURNAL

THE COMMUNITY OF BUSINESS™

[Lists \(/lists/\)](#)

[Health Care \(/news/healthcare/\)](#)

[Real Estate \(/news/real-estate/\)](#)

[Finance \(/news/finance/\)](#)

[Manufacturing \(/news/manufacturing/\)](#)

[Tech \(/news/technology/\)](#)

[Infrastructure \(/news/government/\)](#)

[Travel/Leisure \(/news/travel-leisure/\)](#)

[Media \(/news/media-entertainment/\)](#)

[Professional Services \(/news/services/\)](#)

[Events \(/bizevents/\)](#)

[Custom Features \(/supplements/\)](#)



We've been invested in Southern California since the day we were founded.



[LEARN MORE](#)

## Long Beach Airport Passenger Traffic Slides After JetBlue Pullback

By Howard Fine ([/staff/howard-fine/](#))

Like 1

Share

[in](#) Share

Tweet

Thursday, Aug 8, 2019



([/photos/2016/oct/28/23004/](#))

Long Beach Airport passenger traffic fell 15.5% for the first half of 2019 compared to the same period last year as the fallout continues from JetBlue Airways' pullback in flights in September.

Long Beach airport officials announced Aug. 5 that for the first six months of 2019, 1.71 million passengers went through the municipal airport, down from 2.03 million passengers for the first six months of 2018.

The falloff in passenger traffic eased slightly in June as passenger traffic decreased 12.8% from June 2018 to roughly 307,000.

The main culprit for the drops was the decision by JetBlue Airways Corp. — long the dominant carrier at the municipally owned airport — to sharply cut flights after the city failed in late 2017 to approve construction of customs facilities to support international flights. Starting in September, JetBlue cut 11 of its 34 daily flights. As a result, the airline's passenger boardings at Long Beach fell 39% for the first half of 2019, to 484,000.

Yet even with the cutbacks, more than half of all passengers going into or out of Long Beach still fly JetBlue.

Southwest Airlines Co. picked up some of the slack, nearly doubling its passenger boardings at Long Beach to 257,000. Hawaiian Airlines Inc., which had a barely noticeable 5,500 passengers for the first half of 2018, jumped more than five-fold to nearly 30,000 for the first half of this year.

Meanwhile, air cargo tonnage rose 8% during the first six months of this year to 10,463 tons. Federal Express Corp. grew cargo tonnage 13%, despite the number of landings remaining constant.

*Education, energy, engineering/construction and infrastructure reporter Howard Fine can be reached at [hfine@labusinessjournal.com](mailto:hfine@labusinessjournal.com). Follow him on Twitter @howardafine (<https://twitter.com/howardafine>).*



## Nonprofits

[Home](#) / [Entertainment](#) / [Nonprofits](#)

[http://www.gazettes.com/entertainment/nonprofits/long-beach-teams-pull-big-plane-for-special-olympics/article\\_9b5cfc06-bd3e-11e9-8508-5382f7cce3e0.html](http://www.gazettes.com/entertainment/nonprofits/long-beach-teams-pull-big-plane-for-special-olympics/article_9b5cfc06-bd3e-11e9-8508-5382f7cce3e0.html)

# Long Beach Teams Pull Big Plane For Special Olympics

Harry Saltzgaver 1 hr ago



Long Beach Firefighters take a turn at pulling a 124,000-pound jet 12 feet last year during a fundraiser for Special Olympics Southern California.

—Gazette photo by Geronimo Quitoriano

Twenty-five people at one end of a rope, a 124,000-pound UPS jet on the other end.

Can they pull it?

The answer will come Saturday, Aug. 17, at the Long Beach Airport in the 14th annual Special Olympics Southern California Plane Pull. Last year's event raised \$190,000, and this year's goal is the \$250,000 mark.

Teams of 25 form to see who can pull the jet the farthest the fastest. Companies, clubs, even the Long Beach Police Department have fielded teams in the past.

Teams commit to raising a minimum of \$1,500 — individuals sign up for a minimum \$60 pledge, then fill in for teams that couldn't round up 25 people. People also participate by sponsoring a team, an individual or making a general donation.

"The Plane Pull has grown to be more than just pulling a plane," Bill Shumard, Special Olympics Southern California's CEO, said. "It is a family-friendly event, offering something for everyone. It is such a great way to be a part of our movement of inclusion and acceptance, while helping us serve more athletes, changing their lives, the lives of their families, and of the community."

Registration opens at 8 a.m. Saturday, and the first pull is at 10 a.m. Activities run to 3 p.m. Parking is at 2830 E. Wardlow Rd., and is free.

For more information or to sign up, go to [www.sosc.org/lbplanepull](http://www.sosc.org/lbplanepull).

—Harry Saltzgaver

---

## Harry Saltzgaver

Harry has been executive editor of Gazette Newspapers for more than 26 years. He has been in the newspaper business for more than 35 years, with experience on both weekly and metropolitan daily papers in Colorado and California.

**TIME IS RUNNING OUT!**

Deadline to apply is August 19th by 5:00 PM.

**Apply Now****SHAPE** CALIFORNIA'S  
**FUTURE**  
2020 Citizens Redistricting Commission

## Black Women Execs Recognized and Celebrated in Sisterhood

By E. Mesiyah McGinnis, Staff Writer

Published August 15, 2019



**Front: Bob Gilbert, CDO Los Angeles World Airports, Kelli Bernard, CEO AECOM, Cynthia Guidry, Dir. Long Beach Airport, Stephanie Wiggins, CEO LA Metrolink, Jacqueline Dupont-Walker, LA Metro Board Member, Phil Washington, CEO LA Metro**

Despite the rigors of leading businesses and corporations while balancing families and various ventures, a group of influential African American women and other executives gathered at the LA84 Foundation in the West Adams neighborhood of South L.A., to celebrate businesswomen Cynthia Guidry, and Stephanie Wiggins for accepting CEO positions at Long Beach Airport and L.A.Metro.

The room was filled with a who's who list of business executives, commissioners, public officials and representatives, who, not only recognized the fine work of the honorees but also shined the

light of successes upon each other, mentioning the powerful influences and tremendous strides Black women have made but mostly go unnoticed. L.A. Metro Board Member Jacqueline Dupont-Walker and AECOM Chief Executive Kelli Bernard hosted the event, themed a “Sistering,” a concept of women uplifting and supporting women.

**Photos by E. Mesiyah McGinnis**







BUSINESS AVIATION

# Gulfstream Gets Kudos for Use and Promotion of Biofuels

by Jerry Siebenmark

August 15, 2019, 11:38 AM



*Gulfstream Aerospace has received a 2019 Sustainability Leadership Award from the Business Intelligence Group for its use and promotion of sustainable alternative fuel. (Photo: Gulfstream)*

The Business Intelligence Group presented Gulfstream Aerospace a 2019 Sustainability Leadership Award for the airframer's sustainable aviation fuel (SAF) initiatives, Gulfstream announced this week. It is given to companies and organizations that make sustainability an essential part of their operations.

Since 2011, when a Gulfstream G450 crossed the Atlantic on SAF, the Savannah, Georgia manufacturer has steadily increased its use and the promotion of biofuels. Four years ago, it signed an agreement with World Fuel Services to provide Gulfstream with a consistent supply of SAF for corporate, demonstration, customer support, and test flights from its Savannah base, accounting for company-operated aircraft flying nearly 830,000 nm on SAF and, in the process, reducing its carbon dioxide emissions by 950 metric tons. Earlier this year, Gulfstream made SAF available to customers at its Long Beach, California facility.

"Innovation is at the core of our business, including our environmental strategy," said Gulfstream president Mark Burns. "As a company, we explore ways to support the business-aviation industry's sustainability goals and have done this by designing aircraft for better fuel efficiency and through our efforts to raise awareness of the effectiveness of sustainable aviation fuel in business aviation."

Its SAF supply is chemically equivalent to conventional jet-A, and each gallon burned achieves a more than 50-percent reduction in greenhouse gas emissions, according to Gulfstream.

**Special Olympics**  
Southern California



**WE ARE SOSC**

*Telling the many stories of acceptance, inclusion and joy.*

Menu

## LB Airport Pulls Double Duty for SOSC

on August 15, 2019



By Emma Lee

Special Olympics Southern California will host one of its biggest events this Saturday – and there will be double the fun at Long Beach Airport.

The 14th annual Plane Pull will not be alone because the We Run the City 5K and 10K will happen that morning. UCLA and USC supporters will face each other once again, and for the first time at the Long Beach Airport after alternating between the two campuses in previous years.

Since 2006, Long Beach Airport has graciously lent its grounds to host the **Plane Pull**.

Among the many great people who make the event possible is Claudia Lewis, the interim director of the Long Beach Airport. She plays the important role of making sure the airport is ready to go on the big day.

“Everyone here at Long Beach Airport – operations and maintenance staff, security team members, concession employees, tenants, and volunteers – are committed to making this a successful event in a safe, fun, and memorable way,” she said.

Along with the Long Beach Airport, law enforcement agencies have always been a loyal and committed partner of Special Olympics. Lt. Adam Christin of California Highway Patrol hasn’t let his retirement stop him from participating in any Law Enforcement Torch Run (LETR) events. He was, in fact, part of making the very first Plane Pull happen.

“Lt. Christin has been involved with Plane Pull for several years and remains dedicated to its success,” Lewis said.

After attending a conference for LETR and hearing about Plane Pull events around the country, he knew it needed to happen in Southern California. Lt. Christin believed Long Beach Airport was the place, the size was perfect, and a smaller community airport would be ideal for arranging events.

“They’ve added stuff each year, making it more of a family event. A car show, displays, interactive events, the CHP kids’ pull,” Lt. Christin said.

Everyone will find something to get excited about. This year is extra special because **We Run the City** will share the day and venue. The 5K and 10K will happen earlier in the morning, before the Plane Pull festivities begin and runners, along with their friends and families, are encouraged to join.

All participants from both UCLA and USC are pushing hard to fundraise more than their rival. The competition will be settled on the race course, with the winning school claiming Los Angeles for their own.

“Look forward to welcoming everyone to the site for both events and promise a great time will be had by all!” Lewis said.

Please follow and like us:



Like

Share

Tweet

I like this



NEWS > CRIME + PUBLIC SAFETY

## Airline faces criminal charges for violating Long Beach Airport's noise ordinance

The city prosecutor's office filed criminal charges against Mesa Airlines this week.



The City of Long Beach reveals the new monument sign at the entrance to Long Beach Airport (LGB) on Monday, June 17, 2019. The sign recognizes the airport's rich aviation history and was inspired by the DC-3 aircraft. The sign will welcome visitors to LGB and increase the airport's presence from Lakewood Boulevard. (Photo by Ana P. Garcia, Contributing Photographer)

---

By [EMILY RASMUSSEN](#) | [erasmussen@scng.com](mailto:erasmussen@scng.com) | Long Beach Press-Telegram

PUBLISHED: August 16, 2019 at 6:16 pm | UPDATED: August 16, 2019 at 9:17 pm

---

---

An airline is facing criminal charges for allegedly violating the Long Beach Airport's noise ordinance on 16 separate occasions in the past year, according to a criminal complaint filed by the city prosecutor's office this week.

The complaint — filed against Mesa Airlines and American Eagle on Wednesday, Aug. 14 — alleges that the airline violated the city's ordinance on noise curfews 16 times from August 2018 to July of this year. This is the fifth time the city has prosecuted an airline for violating the noise ordinance since 2002, City Prosecutor Doug Haubert said Friday.

ADVERTISING



"Prosecution is the appropriate action," he said, "only after other efforts have been made to provide an operator with education, about the law and opportunities to bring their operations into compliance with the law. No criminal case is prosecuted unless all reasonable efforts have been exhausted before filing a criminal case."

Mesa Airlines operates flights to and from the Long Beach Airport under the American Eagle brand, a regional branch of American Airlines. Mesa Airlines operates flights for American Eagle between Long Beach and Phoenix, Arizona, [according to its route map](#).

"We will review the lawsuit," American Airlines spokesman Curtis Blessing said Friday, "in coordination with Mesa."

The airline allegedly violated the city's single event noise exposure level, which sets decibel limits for various times of the day. For example, during the day, arriving aircraft must generate no more than 101.5 decibels of noise.

But from 6 to 7 a.m., and between 10 and 11 p.m., the decibel restriction drops to about 90. Overnight, from 11 p.m. to 6 a.m., that's lowered to 79 decibels.

American Eagle, as written in the criminal complaint, allegedly exceeded the overnight noise exposure level 16 times; each of which is a misdemeanor count as laid out in the criminal complaint. And those decibel violations range from 87.7 to 92.5.

---

The first time an airline violates the noise ordinance, they will receive a warning letter, [according to the Long Beach Airport](#). The second violation will warrant a request for a written noise abatement program, asking the owner or operator to explain how they plan to operate without violating the ordinance in the future.

The third violation will bring a \$100 fine, with a fourth and every subsequent violation at a \$300 fine.

Haubert said the city takes the noise ordinance seriously because of the impact to residents' quality of life in the surrounding neighborhoods.

"As a general matter, the airport staff spends a lot of time trying to educate airport operators and to assist them with changing their operations to ensure there are no violations of the noise ordinance," he said. "We have a lot of residential neighborhoods immediately surrounding the airport and they are significantly impacted by late-night flight operations."

A noise ordinance, like Long Beach's, is extremely rare for other cities. Since the Federal Aircraft Noise Compatibility Act, passed in 1990, no other city has been able to secure a law as stringent as Long Beach's, [Assistant City Attorney Michael Mais said told the City Council in 2015](#).

"It's not like any other ordinance we have on the books," Mais said at the time.

That's what makes a criminal complaint, against an airline, equally as rare.

"It is unusual for us to criminally prosecute an airline," Haubert said. "And we're one of the few cities with the ability to prosecute airlines under local and federal law."

An arraignment for the case is set for Wednesday, Oct. 2, at the Governor George Deukmejian Courthouse in Long Beach.

---

Tags: [crime](#), [Long Beach Airport](#), [Top Stories LBPT](#)



SPONSORED CONTENT

## Man Found Hidden Room In His Attic And Immediately Called The Police [🔗](#)

By Upbeat News

**upbeat**

Man returns to his childhood home and notices something strange on the attic wall, what he discovered was a secret...

---



- ADVERTISEMENT -



American Eagle flies a Bombardier CRJ-900 aircraft to and from Long Beach Airport and Phoenix, Arizona. Courtesy photo.

[LONG BEACH AIRPORT](#)

AUG 16 12:08 PM

## City files criminal charges against airline, alleging repeated violations of Long Beach Airport noise ordinance

 [Melissa Evans](#)

  749

The city prosecutor is taking the rare step of filing criminal charges against a carrier that operates at Long Beach Airport, alleging it violated the city's [noise ordinance](#) 16 times in the last 12 months.

City Prosecutor Doug Haubert, in a courtesy email sent late Thursday to members of the City Council, said Mesa Airlines, doing business as American Eagle—an affiliate of American Airlines—has repeatedly violated the city's strict regulations on aircraft noise, even after intervention from the city.

"Before filing this case in court, Airport staff was in communication with American Eagle to inform them of Long Beach's ordinance and to encourage their compliance," Haubert said in the email.

Staff at Long Beach Airport reported nine of American Eagle's flights were in violation of the city's ordinance in 2017, and in the first half of 2018, the airline had six flights in violation.

"Although Airport staff continued to work with American Eagle in an effort to reduce the violations, there was not a consistent effort by American Eagle and violations continued," Haubert wrote.

### Fly Business Class for Less

Fill the Form to Save  
30-72% On Your Next  
Flight or Submit a Request  
Online.



BusinessClassConsolidator

- ADVERTISEMENT -



Between Aug. 14, 2018, and Aug. 2 of this year, the airline violated the policy 16 times, Haubert said in the note.

American Eagle averages three daily flights to and from Long Beach and Phoenix, Arizona, which is its hub.

Curtis Blessing, a spokesman for American Airlines, said in an email Friday that the company is researching the legal action and would review it in coordination with Mesa Airlines.

Long Beach's noise ordinance forbids commercial plane operations between 10 p.m. and 7 a.m., among other restrictions. Airlines are first issued a warning and small fine, and then they are fined progressively steeper penalties if violations continue.

As a last resort, the ordinance allows criminal prosecution after failure to adhere to local law, though it is rare for the city to take this step.

Haubert said in the email that the Prosecutor's Office has filed just four previous criminal cases against airlines since 2002. The last one was in 2015 against operator Kalitta Charters, LLC.

In the most recent case, Kalitta [agreed to pay](#) the city \$54,000 in fines as part of a plea agreement. The city had filed 13 misdemeanor charges against the Michigan-based airline for operations between June 2014 and March 2015.

Other cases have been filed against Komar Aviation, JetBlue Airways and American Airlines, most of them resulting in consent agreements.

Several airlines have in recent years violated the city's noise ordinance, most notably JetBlue, the largest carrier at the local airport. The airline in May [lost an appeal](#) in challenging \$96,000 in fines it accrued for late flights in 2017.

Haubert declined to discuss the specifics of the case against American Eagle because it is early in the process. However he said generally, a criminal case is only filed when it becomes apparent that an operator is not going to take reasonable steps to avoid late night flights.

"The goal in a case like this is to get compliance with the law," he wrote, "and if filing a criminal complaint is the only way to accomplish this I will not hesitate to take that step.

"People who live in Long Beach invested in their homes with the assumption that airlines will follow the law and operators who use the airport know that criminal prosecution will result when violations continue."

The city sent American Eagle a court summons on Wednesday, with an arraignment scheduled for early October. In criminal cases against corporations, typically no one is arrested.



Long Beach Airport. File photo.

## Support our journalism.

Hyperlocal news is an essential force in our democracy, but it costs money to keep an organization like this one alive, and we can't

# LBReport.com

## Opinion

### LB City Prosecutor Files (Unusual But Not Unprecedented) Misdemeanor Criminal Complaint Alleging Violations Of LB's Airport Noise Ordinance, Cites Mesa Airlines (Which Provides Regional Service For American Airlines Under "American Eagle" Banner)

Recommend

Share

Be the first of your friends to recommend this.

*If LBREPORT.com didn't tell you, who would?*

No one in LBREPORT.com's ownership, reporting or editorial decision-making has ties to development interests, advocacy groups or other special interests; or is seeking or receiving benefits of City development-related decisions; or holds a City Hall appointive position; or has contributed sums to political campaigns for Long Beach incumbents or challengers. LBREPORT.com isn't part of an out of town corporate cluster and no one its ownership, editorial or publishing decisionmaking has been part of the governing board of any City government body or other entity on whose policies we report.

**LBREPORT.com is reader and advertiser supported.** Support independent news in LB similar to the way people support NPR and PBS stations. We're not non-profit so it's not tax deductible but \$49.95 (less than an annual dollar a week) helps keep us online.

Donate



(August 16, 2019, 7:00 p.m.) -- The LB City Prosecutor's office has filed an unusual but not unprecedented misdemeanor criminal complaint alleging violations of LB's Airport noise ordinance by a LB Airport operator. The newly filed complain alleges 16 violations over the space of a year -- between August 14, 2018, through August 2, 2019 -- by Mesa Airlines, a regional regional air service provider for American Airlines under the "American Eagle" banner. On average Mesa has three daily flights to/from Long Beach to its Phoenix Hub using a Bombardier CRJ-900 aircraft.

Under LB's Airport Noise Ordinance, the City Prosecutor may criminally prosecute an aircraft owner/operator if it lands/takes off without a reasonable basis to believe it can do so within the Airport's noise limits. The complaint cites alleges 16 violations of LB Municipal Code section 16.43.040 with Single Event Noise Exposure Levels (SENEL) above 79 decibels "with no reasonable belief" that the aircraft would would comply with that limit, thus allegedly violating LB Muni Code section 16.43.100. The complaint cites these dates and measured noise levels:

- August 14, 2018: 88.3 db
- August 16, 2018: 89.8 db
- August 23, 2018: 91.4 db
- August 24, 2018: 91.4 db
- Dec, 28, 2018: 90.6 db
- Jan. 1, 2019: 92.3 db
- May 4, 2018 [we suspect typo, 2019]: 91.9 db
- May 8, 2019: 92.5 db
- May 24, 2019: 92.6 db
- June 25, 2019: 92.4 db
- June 30, 2019: 91.6 db
- June 30, 2019: 87.7 db
- July 12, 2019: 90.1 db
- July 25, 2019: 91.3 db
- July 26, 2019: 90.9 db
- July 31, 2019: 81.2 db

[Scroll down for further.]

[Scroll down for further.]

[Scroll down for further.]

Dr. Avani Patel, O.D., F.A.A.O

# Alamitos

## EYE CARE

10951 Cherry St., Los Alamitos, CA 562-430-6161

An Optometric Corporation

## JOE & LINDA SOPO

### TOP REAL ESTATE AGENTS

BREK0544127 BREK0501963

# RAPTOR RAMBLE

8:00 a.m.  
Saturday, Sept. 7th  
Los Cerritos Wetlands

This guided walk is fun and informative.

[www.lcwlandtrust.org](http://www.lcwlandtrust.org)



The only active runway from 10:00 p.m to 7:00 a.m. is normally LGB's main diagonal runway 30/12 where take-offs and landings between 11 p.m. and 6 a.m. are limited to 79 db SENEL. (Accordingly we presume the alleged violations occurred between 11 p.m. and 6 a.m.)

City Prosecutor Doug Haubert said in an August 16 statement to LBREPORT.com:

I realize it is out of the ordinary for an airline to be criminally prosecuted for late flights, and only a few cities even have the ability to legally do this. A criminal case is only filed when it becomes apparent that an operator not going to take reasonable steps to avoid late night flights that violate the Airport Noise Ordinance.

The goal in a case like this is to get compliance with the law, and if filing a criminal complaint is the only way to accomplish this I will not hesitate to take that step.

People who live in Long Beach invested in their homes with the assumption that airlines will follow the law and operators who use the airport know that criminal prosecution will result when violations continue.

Sponsor



Sponsor



American Airlines spokesman Curtiss Blessing stated in an email response to LBREPORT.com: "Flights to and from Long Beach Airport are operated by Mesa Airlines, under our American Eagle brand. We will review the lawsuit in coordination with Mesa."

LBREPORT.com sought comments Mesa Airlines; its response is pending.

In an August 15 courtesy email to the Mayor, Councilmembers, City Management and the City Attorney's office, City Prosecutor Haubert indicated the City Prosecutor's office had previously filed at least four criminal (misdemeanor) cases against airlines since 2002 (the most recent in 2015 against Kalitta (a charter operator.)

City Prosecutor Haubert's email indicated that prior to filing the case against Mesa Airlines, "Airport staff was in communication with American Eagle to inform them of Long Beach's ordinance and to encourage their compliance. Per Airport staff, in calendar year 2017 American Eagle had 9 flights that were in violation, and in the first half of 2018 American Eagle had 6 flights in violation. Although Airport staff continued to work with American Eagle in an effort to reduce the violations, there was not a consistent effort by American Eagle and violations continued."

Sponsor



Sponsor



Adoptable pet of the week:



Hardwood Floor Specialists  
Call (562) 422-2800 or (714) 836-7050

Thank you for supporting  
independent news in Long Beach

LBReport.com





In 2003, under former City Prosecutor Tom Reeves, JetBlue agreed to a "consent decree" that avoided misdemeanor criminal prosecution by agreeing to pay civil sums (in excess of the noise ordinance's fines) to the non-profit LB Public Library Foundation (\$3,000 for the first half dozen violations in a calendar quarter, \$6,000 for those thereafter.) In August 2017, City Prosecutor Haubert and JetBlue agreed to update the consent decree to provide for \$6,000 payments by JetBlue for all violations.

Sponsor

**SECURITY TIP OF THE WEEK**

**How to Stay Safe at the Pump**

**Video: How to Stay Safe at the Pump**

Cameras • Lighting • New • Used • Repairs • Photo Restoration • Printing • Video Transfer • Passports

**Tuttle CAMERAS**

Since 1946

5467 E. Carson St.  
Long Beach, CA 90808  
Carson St. & Bellflower Blvd.  
(562) 424-6633

www.tuttlecameras.com  
Mon.-Fri. 9:00am-6:00pm  
Sat. 10:00am-5:00pm

A few months earlier in January 2017, the City Council voted 8-1 (Andrews dissenting) not to allow a JetBlue-sought federal customs facility at LB Airport (that would have effectively turned LGB into an international facility that couldn't be limited to JetBlue.)

In late 2017 and early 2018, JetBlue and LB city management clashed over fines for late-night-flights fines, escalating the matter to a scheduled June 2018 City Council appeal hearing. JetBlue argued that LB's ordinance exempts LB delays stemming from "system delays" (such as weather issues in the east or midwest that delay flights here.) JetBlue withdrew its appeal before the Council hearing and LBREPORT.com subsequently learned that the City Attorney's office and JetBlue had agreed to an agreement governing the way the City and JetBlue would handle future late night flights and fines for them.

In November 2018, the Council approved Airport management's implementation of new "use 'em or lose 'em" flight slot rules designed to prevent "slot-squatting." JetBlue opposed the new rules, but other carriers didn't. In April 2019, JetBlue gave 10 of its slots, which were ultimately allocated to Southwest and other carriers.

**4 AUTO SERVICE SHOPS**  
IN LONG BEACH & BELLEVILLE

Call Us Today  
with your questions  
**(562) 366-8474**  
www.crozcosautoservice.com

**Crozcos**  
AUTO SERVICE

MakeAGIF.com





Special Day for the Special Olympics Southern California at Long Beach Airport

39 views

2 0 SHARE SAVE ...



Long Beach Local News  
Published on Aug 17, 2019

SUBSCRIBE 2K

Category

News & Politics

## A challenge of epic proportions: groups take shot at pulling huge jet in the name of raising funds for ...

Long Beach Press Telegram

17, groups of 25 people lined up for a shot at pulling a 124,000-pound jet down the runway at the **Long Beach Airport**. These folks attempted the feat of ...

Flag as irrelevant

## Special Olympics Southern California Fundraises with Plane Pull and USC vs UCLA Run

KTLA

Erin Myers reports from Special Olympics Southern California's day of double fundraisers at **Long Beach Airport**: the 'We Run the City' 5K/10K and ...

Flag as irrelevant

# MASS SHOOTING PLOT NEAR CALIFORNIA AIRPORT THWARTED, POLICE SAY

By **NBCnews** - August 21, 2019



A warning from a coworker prevented what could have been a workplace shooting at a hotel near California's Long Beach airport, police say. A 37-year-old cook was upset over a workplace issue and told a coworker he was going to perpetrate a mass shooting, according to investigators. He was arrested without incident, with officials saying the coworker's warning likely saved many lives. Aug. 21, 2019

[REPORT A TYPO](#)

# BizBrief: Today's News To Know

By Business Journal Staff - August 23, 2019

---



BROUGHT TO YOU BY  
**Long Beach Business Journal**

## China Announces Tariffs On U.S. Goods

In response to the Trump administration's recent decision to implement 10% tariffs on Chinese goods worth a total of \$300 billion, China's ministry of finance [announced today](#) that it would impose tariffs of "10 percent or 5 percent" on \$75 billion in U.S. goods, effective September 1. The ministry also decided to impose "additional tariffs of 25 percent or 5 percent" on American-made vehicles and auto parts beginning December 15. "China's imposition of additional tariffs is a forced response to U.S. unilateralism and trade protectionism," an announcement from the ministry stated. After the news broke, stock markets fell – the Dow dropped about 624 points, the S&P 500 dipped about 76 points, and the Nasdaq dropped by about 240 points.

## Customs And Border Patrol Seizes Illegal Gun Parts At San Pedro Ports

A shipment of 52,601 gun parts, with a total domestic value of \$378,225 was seized by U.S. Customs and Border Patrol (CBP) yesterday at the San Pedro Bay ports complex. The sights, muzzles, brakes, buffer kits and grips arrived in three shipments from China, in violation of the Arms Export Control Act and international arms trafficking regulations, according to a CBP press release. "This seizure is an exceptional example of CBP officers' and import specialists' vigilance, commitment and keen focus in enforcing complex arms embargo regulations," Carlos C. Martel, CBP director of field operations in Los Angeles, said. "The Chinese Arms Embargo is just one of the hundreds of regulations CBP enforces, ensuring the safety and security of our country." China is among a list of countries subject to arms trading restrictions imposed by the U.S.

## **LGB Attributes Decrease In Passenger Traffic To Flight Slot Reallocation**

Long Beach Airport (LGB) announced today that airline passenger traffic decreased 10.8% in July 2019 compared to the same period in 2018. In July, LGB served 319,296 passengers compared to 357,989 during the same month in 2018. Marlene Arrona, public affairs representative with LGB, told the Business Journal that the decrease is related to the reallocation of 10 JetBlue Airways flight slots earlier this year. Starting in April, Southwest Airlines temporarily picked up the flight slots, she added. "We've been seeing kind of a change in trend since April," she said. A breakdown of the figures e-mailed to the Business Journal showed that Southwest experienced a 121.1% increase in airline passenger traffic in July 2019 compared to the same period in 2018. JetBlue, American Airlines, Delta Air Lines and Hawaiian Airlines all experienced decreases since July 2018.

## **Long Beach Chamber Asks For Comments On Proposed Vacant Property Fee**

The Long Beach Area Chamber of Commerce is asking businesses and property owners to participate in a survey about a proposed fee for vacant commercial properties. The proposal was brought to the Long Beach City Council in May and, if implemented, would impose a vacancy fee on commercial properties in an effort to spur economic development. "Despite Long Beach's strong retail economy and overall low commercial vacancy rates, there is concern for commercial corridors where certain retail properties have remained vacant for years, resulting in blighted conditions and depressed neighborhood economic activity," a newsletter from Chamber President/CEO Randy Gordon stated. Cities across the nation, including New York, Boston, Oakland and San Francisco, have considered or enacted similar policies to prevent long-term vacancies of commercial properties, according to Gordon. Most vacancy policies allow exemptions for properties that are undergoing renovations or are in an entitlement process with the city, he noted. The survey closes at 11:59 p.m. on Monday, August 26, and results will be presented to the Long Beach Economic Development Commission the next day. The survey can be found [here](#), with additional resource material available [here](#).

## **Port of Los Angeles Awards \$1 Million In Grants To 30 Local Organizations**

The Port of Los Angeles has selected 30 local organizations to receive a total of \$1 million in grants through the port's Community Investment Sponsorship Program. According to the port, the program annually allocates grants to support community projects focused on local workforce development, education, the environment and on promoting the Los Angeles waterfront. Grants awarded under the program fall into three categories: small (\$5,000 and under); medium (\$5,001 to \$99,999) and large (\$100,000



and over). The port awarded \$32,000 in small grants, \$293,000 in the medium category and three large grants totaling \$675,000. [Click here](#) for a list of recipients. "The port's Community Investment Sponsorship Program continues to serve as an important vehicle to support innovative and promising local projects in the Los Angeles Harbor area," Gene Seroka, executive director of the Port of Los Angeles, stated.

### **Long Beach Law Firm Honored With Distinguished Peer Award**

Keesal, Young & Logan (KYL) announced this week that it earned the International Legal Technology Association (ILTA) Distinguished Peer Award for "Transformation Project of the Year." The award was presented at the ILTA's technology conference, ILTACON 2019, in Orlando. ILTA's award recognized KYL's Keesal Propulsion Labs (KP Labs), a technology company launched in 2018 to focus on business process automation. KP Labs manages more than 120 workflow processes for 10 Fortune 500 companies. "The Keesal Propulsion Labs initiative has been one of the most successful projects we have undertaken because it was co-created with our friends and partners across the legal ecosystem," Skip Keesal, founding partner at KYL, stated. "ILTA has been instrumental in supporting our firm's journey, and we are grateful for this recognition."

### **Mayor To Host Two Community Events Saturday**

Long Beach Mayor Robert Garcia is hosting two "Meet the Mayor" events tomorrow, August 24, to update the community about local projects, the city's proposed Fiscal Year 2020 budget and other issues. The [first event](#) is at 10 a.m. at Fire Station 14, 5200 Eliot St. The [second meeting](#) takes place at 12:30 p.m. at Stearns Champions Park, 4520 E. 23rd St. For more information, call the mayor's office at (562) 570-6801 or e-mail [mayor@longbeach.gov](mailto:mayor@longbeach.gov).

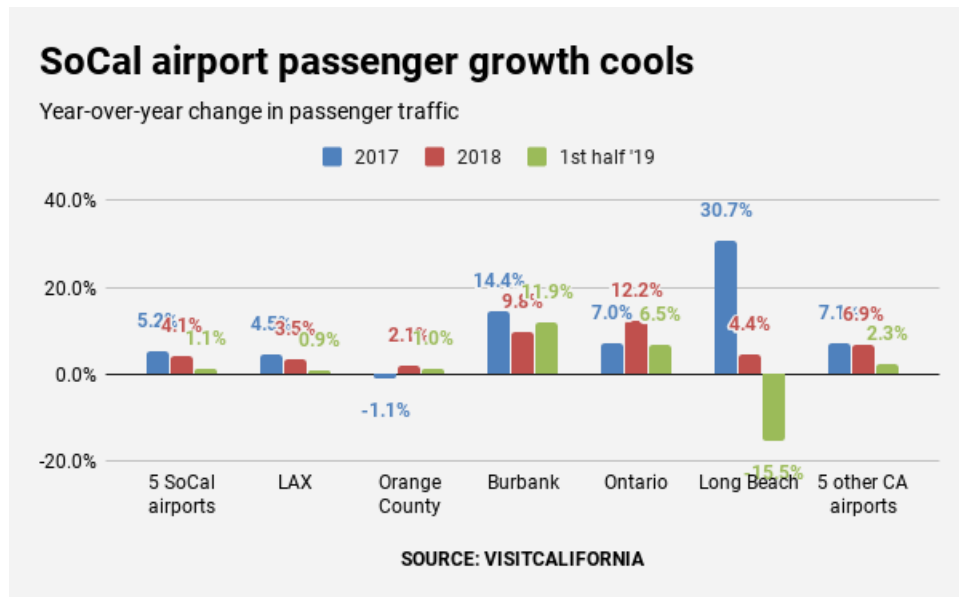
---

---

## BUSINESS

# Bubble Watch: Southern California airport passenger growth cools off

Five SoCal airports' passengers growth cools to 1.1% after rising 4.1% in '18; up 5.2% in '17.



STAFF GRAPHIC

By **JONATHAN LANSNER** | [jlansner@scng.com](mailto:jlansner@scng.com) | Orange County

Register

PUBLISHED: August 27, 2019 at 8:00 am | UPDATED: August 29, 2019 at 12:16 pm

*"Bubble Watch" digs into trends that may indicate economic and/or housing market troubles ahead.*

**Buzz:** Growth in the number of passengers using Southern California airports slows dramatically.

**Source:** VisitCalifornia

## The Trend

The five airports in the region covered by the Southern California News Group drew 55.4 million passengers in 2019's first half, up 1.1% in a year after rising 4.1% in '18 and 5.2% in '17.

Or look at the slowdown the way: The region's on pace to have 1.22 million more airplane passengers this year vs. gains of 4.4 million in 2018 and 5.3 million in 2017.

## The Dissection

Tourism was bound to slow after its remarkable rise from the ashes of the Great Recession.

Air travel, in particular, seems vulnerable for a variety of reasons. First, it's become a rather distasteful travel option due to the airlines' inability to deftly handle traffic increases. Also all that trade tension and a strong U.S. dollar that hurts the spending power of foreign visitors.

Here's how 2019's first six months of passenger counts at the five local airports looked vs. the previous three years ...

**LAX:** 43.1 million passengers, up 0.9% this year after rising 3.5% in '18 and 4.5% in '17.

**Orange County:** 5.3 million passengers, up 1% this year after rising 2.1% in '18 and dropping 1.1% in '17.

**Burbank:** 2.7 million passengers, up 11.9% this year after rising 9.8% in '18 and 14.4% in '17.

**Ontario:** 2.6 million passengers, up 6.5% this year after rising 12.2% in '18 and 7% in '17.

**Long Beach:** 1.7 million passengers, down 15.5% this year after rising 4.4% in '18 and 30.7% in '17.

---

Sign up for **The Home Stretch** newsletter and its new **Bubble Watch** edition. Get a twice-a-week serving of hot housing news from around the region! **Subscribe here.**

---

## Another view

The cooling isn't just a SoCal trend: At California's five other major airports, 2.3% more passengers vs. growth of 6.9% in '18 and 7.1% in '17.

## How bubbly?

On a scale of zero bubbles (no bubble here) to five bubbles (five-alarm warning) ... **TWO BUBBLES!**

Tourism's ups-and-downs speak to the region's overall "desirability" on a national and global scale. And we are still seeing growth, albeit less of it.

Still, numerous examples of such "coolings" across many industries makes you wonder what's next.

---

Tags: **airports, Bubble Watch column, Economy, John Wayne Airport,** (





# LOS ANGELES BUSINESS JOURNAL

THE COMMUNITY OF BUSINESS™

Local Decisions.  
Local Commitment.



LEARN MORE



1ST CENTURY BANK

## LAX Passenger Traffic Eked Out 0.4% Gain in July, but International Traffic Dipped

By Howard Fine (/staff/howard-fine/)

Like 0

Share

in Share

Tweet

Tuesday, August 27, 2019



(/photos/2019/jul/05/45136/)

Let's Fly Away: LAX saw a bump in its number of passengers, continuing a trend that began in January. Photo by Ringo Chiu (/staff/ringo-chiu/).

July passenger traffic at Los Angeles International Airport edged up by 40,000, or 0.4%, compared to July 2018 to reach nearly 8.5 million, according to figures released by the airport's governing authority on Aug. 27.

But the figures from Los Angeles World Airports show that international passenger traffic fell 2.5% in July, and air cargo tonnage was down significantly.

For the first seven months of this year, total passenger traffic rose by 412,000 compared to the same period last year to reach 51.5 million, an increase of 0.8 percent.

Breaking down the figures, domestic passenger traffic rose by 1.8 percent to 5.9 million in July compared to July of last year; year to date, domestic traffic was up nearly 1.7 percent to 36.4 million.

International passenger traffic, though, fell by 64,000 in July to 2.5 million, a drop of 2.5% compared to July 2018. Year to date, international traffic is down nearly 200,000 to under 10.2 million, a drop of 0.8%.

Air cargo tonnage showed a more significant drop in July, falling 6% from last year to 190,000 tons as trade tariffs from the United States and China have begun to cut into trade flows. Year to date, air cargo is off 4.3% from last year, dropping to 1.3 million tons.

July's air traffic picture was mixed at two of the region's smaller outlying airports: Long Beach and Ontario International.

At Ontario, air passenger traffic was up 10.4% this July compared to last, reaching 495,000, according to figures from Ontario International Airport Authority released Aug. 14. Traffic was up 7% for the first seven months of this year compared to last year, topping 3 million.

But at Long Beach Airport, traffic was down once again amid continuing fallout from dominant carrier JetBlue Airways Corp.'s decision last year to scale back operations there. Air passenger counts at Long Beach fell 10.8% in July compared to July of last year, falling to 319,000, according to figures released Aug. 22 by the city-run airport authority. For the first seven months of 2019, passenger counts fell nearly 15% from the same period last year to just over 2 million.

*Education, energy, engineering/construction and infrastructure reporter Howard Fine can be reached at [hfine@labusinessjournal.com](mailto:hfine@labusinessjournal.com). Follow him on Twitter @howardafine (<https://twitter.com/howardafine>).*

For reprint and licensing requests for this article, [CLICK HERE](https://info.wrightsmedia.com/labj-licensing-reprints-request-0?magazine_name=Los%20Angeles%20Business%20Journal) ([https://info.wrightsmedia.com/labj-licensing-reprints-request-0?magazine\\_name=Los%20Angeles%20Business%20Journal](https://info.wrightsmedia.com/labj-licensing-reprints-request-0?magazine_name=Los%20Angeles%20Business%20Journal)).

F/A-18s will be flying over Long Beach as part of Fleet Week • Long Beach Post News

- ADVERTISEMENT -



[LONG BEACH AIRPORT](#)

AUG 28 4:42 PM

## F/A-18s will be flying over Long Beach as part of Fleet Week

Staff Reports

Twitter Facebook 2322

Military aircraft will begin arriving at Long Beach Airport tonight and Thursday, and will continue flights through Labor Day as part of Fleet Week festivities, [according to](#) Councilman Daryl Supernaw's office.

One military transport aircraft, a C-27J, is expected to arrive at LGB Wednesday night. Four F/A-18 aircraft, which are significantly louder than normal planes, will arrive on Thursday.

The military plans will participate in Fleet Week with law enforcement, fire and the U.S. Coast Guard near the Port of Los Angeles.

Supernaw said his office expects the aircraft to depart on Tuesday, Sept. 3, "but all times are tentative and subject to change."

- ADVERTISEMENT -



NEWS

# John Wayne, LAX, San Diego ranked among top airports in U.S.



A Delta jet lands on runway 20R at John Wayne Airport. (Photo by Jeff Gritchen, Orange County Register/SCNG)

By **DAVID WHITING** | [dwhiting@scng.com](mailto:dwhiting@scng.com) | Orange County Register

PUBLISHED: August 29, 2019 at 7:00 am | UPDATED: August 29, 2019 at 9:22 am

It's popular to whine about everything that has to do with flying — especially airports. But no more whining, at least when it comes to Southern California.

My review of expert reports, travel websites and, yes, actual data found that regardless of what nattering nabobs of negativism say, we have some of the best airports in the nation.

From San Diego International Airport in the south all the way to Hollywood Burbank Airport — and you have to love that name — numerous surveys reveal that flying locally could be a whole lot worse.

Sure, traffic can be brutal at LAX. It's easy to grump about the cost of parking at John Wayne Airport. Long Beach isn't as cozy as it was, gulp, 25 years ago.

But be grateful you don't live in, say, Chicago. Mind you, O'Hare International Airport gets poor grades for just about everything, from lost luggage to flight delays.

In Southern California, however, John Wayne consistently lands in the top 10 of large American airports and it's not alone.

JWA gets high marks for such details as its baggage claim area, security and most important of all: flights that arrive on time.



Passengers walk through the terminal at John Wayne Airport. (File photo: Joshua Sudock, Orange County Register/SCNG)

Heck, even the behemoth on the block, LAX — one of the busiest airports in the world with more than 87 million passengers a year — can boast an astounding “flights canceled” record of less than 1%.

Instead of focusing on that lost piece of luggage from Timbuktu, let’s review what works.

## **Friendly skies**

There are nearly 20,000 airports in the U.S., but only about 500 offer commercial flights.

Most, like the one I occasionally fly to in Medford, Ore., are relatively quiet, seem to close too early, open too late and offer few amenities. But I don’t fly to Medford for the ambiance. I fly to visit my parents’ cabin.

Accordingly, this little airport is perfect in its own way, just as Long Beach Airport is just fine doing what it does. If you walk the tarmac in Long Beach, suitcase in hand, you can’t help but feel like Humphrey Bogart in “Casablanca.”

Enough of small airports, though.

This column focuses on larger airports and what works best. Sorry, but that means that perfectly good airports such as Ontario International Airport in San Bernardino County will get little attention here while San Diego — strangely, one of Southern California’s best kept secrets — is celebrated.

That’s right. San Diego airport.

Those in the know who struggle matching LAX flights with their itinerary, simply switch to San Diego, an airport with easy access from the southern half of Orange County as well as parts of Riverside and San Bernardino counties.

San Diego also just happens to be another SoCal airport rated among the top in the U.S., according to a host of publications and databases.

I like San Diego airport because its long-term parking is so close you can walk to the airport. A popular website called The Points Guy (as in mileage points) loves it for everything else.

Friendly, relatively empty and beautiful is how Points Guy sums up San Diego airport.

“It was all towering glass panels and silver metal, with funky sculptures and fountains thrown in for good measure,” Points Guy reports. He also discovered “soothing music and free ballet performances in front of the terminal’s baby grand piano,” as well as therapy dogs for waiting passengers.

Points Guy isn’t alone in his therapy dog discovery. But he may be alone in his assessment.

At LAX, therapy dogs also are available to soothe anxious souls braving thundering herds. LAX calls it — and I am not making this up — a “Pets Unstressing Passengers” program.

But, sorry, I have to wonder if we really need more therapy dogs, even trained ones. From where I stand, we already have too many passengers who bring aboard their own pooches for, uh, therapy.

## **Cowboy country**

Here are the main things considered in assessing airports: flight delays, cancelled flights, access to the airport, check-in lines, security wait times, lounge areas, WiFi, restaurants and retail stores, baggage claim areas, public transit.

Oddly, no one seems to have power charging stations on the list, although some airports are better than others and overseas airports are ahead when it comes to offering cozy workstations for your laptop.

In the U.S., airports consistently in the top 10 include Portland, Phoenix and Atlanta. After that, travel experts vary about best airports — except when it comes to John Wayne.

So let’s take a look at JWA from the fresh eyes of a visitor.

“Designed to mirror an airplane fuselage, John Wayne Airport,” states Vacation Idea website, “features a glass-enclosed central lobby highlighted by sleek stainless steel and gorgeous natural stone.

“Large picture windows overlooking the runway and soaring vaulted ceilings simply add to the warmth and beauty of this airport.

“There are three separate terminals at the airport, all of them offer their own ticket counters, gates, security screening checkpoints, and baggage claim areas making it easy and efficient for visitors to navigate.



“During downtime, travelers can peruse the shops, relax in the departure lounges, or refuel at the food court areas. They can even immerse themselves in the arts with the rotating art exhibits running along both concourses.”

Here’s the thing: It’s all true.

(Full disclosure: I recently was honored in one of those exhibits.)

## Be like Bogie

The website AirHelp evaluates airports around the world and reports that airports in Athens and Tokyo are among the best. My pick? Tokyo International Airport is indeed awesome. But Athens? Meh.

The point is that despite all the surveys, the only thing that matters is what matters to you.

My wife, for example, will go out of her way to find a Pret a Manger shop and there is no argument that their chocolate croissants are amazing.

On the other hand, the best thing about Hollywood Burbank, according to Upgraded Points, is the lounge.

But if you’re on the go, I’m told, Burbank “is the only place where you can sign for your rental car with one hand and grab your luggage off the belt with the other.”

When you’re arriving, however, other things matter — like meeting the right person at the right time and getting to say wise things like Bogart did.

“If that plane leaves the ground and you’re not with him, you’ll regret it,” said the Boge. “Maybe not today. Maybe not tomorrow, but soon and for the rest of your life.”

---

Want local news?

**Sign up for the Localist and stay  
informed**

Enter your email to subscribe



Your Community Credit Union  
Proudly Serving Orange County



long beach  
airport

## Long Beach Airport News

### Military aircraft to operate out of Long Beach Airport this weekend

By: courtesy / On: August 29, 2019 / In: Community, Long Beach, Military, Navy / Tagged: California, LA Fleet Week, Long Beach Airport, Long Beach CA, Los Angeles County CA, Southern California

Military transport aircraft and four F/A-18 aircraft will be operating out of Long Beach Airport this weekend. The aircraft will be participating in Los Angeles Fleet Week along with several large helicopters from Law Enforcement, Fire and the U.S. Coast Guard. As part of the event, there will be multiple flyovers and the F/A-18s will be participating in some of the flyovers.

The flyovers will be conducted during daytime hours Labor Day weekend near the Port of LA (San Pedro). These aircraft are significantly louder than aircraft that typically operate at the Airport. We anticipate that these aircraft will depart on Tuesday, September 3, but all times are tentative and subject to change.

Due to the unique nature of their missions, the military has demonstrated a desire to assist us in being a good neighbor and they have been very responsive to community concerns within their mission and safety of flight constraints. The aircraft will use noise abatement procedures when operating in the vicinity of Long Beach Airport. These procedures include modified arrival and departure flight profiles and minimum use of afterburners.

*The article above was released by Long Beach Airport.*

Previous Post: [Weather in northwest Orange County for Thursday, August 29, 2019](#)

Next Post: [Chris Griffin will call Los Angeles County Fair meet](#)

#### LEAVE A REPLY

Your email address will not be published. Required fields are marked \*

All proceeds from the Shop directly fund the Precious Life Shelter Program for pregnant women and babies

*You Can help...*

*Volunteers always welcome!*

3622 Florista St., Los Alamitos  
Store Hours: M-F 10a - 4p / SA 10a-3p

562-430-7309  
[www.preciouslifeshester.org](http://www.preciouslifeshester.org)

(Click above for more information.)

SEARCH

Custom Search

Long Beach City College  
will be hosting the

## LONG BEACH COMMUNITY JOB FAIR 2019

Tuesday, September 10, 10am - 2pm

**VETERANS STADIUM**  
4901 E. CONANT STREET  
LONG BEACH, CA 90808

100+ Employers  
Job Fair & Parking are FREE

(Click above for more information.)