

Airport Advisory Commission

Jeffrey Anderson
Chair

Wayne Chaney Sr.
Vice Chair

Alvaro Castillo

Katie Larson

Rita Nayak

Miles Nevin

Geetanjali Reuben

Jeff Rowe

Mary Sophiea

Airport Management

Cynthia Guidry
Airport Director

Juan López-Rios
Deputy Airport Director

Ken Mason
Executive Assistant

Claudia Lewis
Manager of Administration
& Finance

Ron Reeves
Airport Operations & Facilities
Manager

Ambi Thurai
Engineering Officer

Dale Worsham
Administrative Officer

Karl Zittel
Airside Operations Officer

Matthew Brookes
Airport Properties Officer

Scott Garrett
Facilities Management Officer

Mony Chhey
Financial Services Officer

Scott Korobkin
Superintendent of Safety and
Security

Ryan McMullan
Noise & Environmental Affairs
Officer



Long Beach Airport Monthly Noise Report June 2019

COMMERCIAL AIRCRAFT LATE NIGHT ACTIVITY
LGB Current Month & Calendar Year-To-Date Statistics (10 PM- 7AM)
June 2019

June				Calendar Year-To-Date		
10PM - 11PM Activity	2019	2018	Change	2019	2018	Change
Air Carrier & Commuter Operations	2,824	2,969	-4.9%	15,872	18,406	-13.8%
American/Mesa/SkyWest Airlines	4	2	100.0%	9	21	-57.1%
Delta/SkyWest/Compass Airlines	5	2	150.0%	18	13	38.5%
FedEx	0	0		0	0	
Hawaiian Airlines	0	0		3	0	300.0%
JetBlue Airways	5	22	-77.3%	67	208	-67.8%
Southwest Airlines	1	1	0.0%	5	8	-37.5%
UPS	0	0		0	0	
Subtotal 10PM-11PM	15	27	-44.4%	102	250	-59.2%
11PM- 7AM Activity	2019	2018	Change	2019	2018	Change
American/Mesa/SkyWest Airlines	3	1	200.0%	5	3	66.7%
Delta/SkyWest/Compass Airlines	0	1	-100.0%	3	5	-40.0%
FedEx	0	0		0	0	
Hawaiian Airlines	0	0		2	0	200.0%
JetBlue Airways	8	16	-50.0%	41	120	-65.8%
Southwest Airlines	0	0		0	0	
UPS	0	0		2	0	200.0%
Subtotal 11PM-7AM	11	18	-38.9%	53	128	-58.6%
TOTAL	26	45	-42.2%	155	378	-59.0%

Notes:

0.9% (26 of 2,824) of total commercial operations occurred between 10pm - 7am.

0.9 flights - Nightly average for all late night (10:00 PM—7:00 AM) commercial flights, includes unanticipated delays.

0.4 flights - Nightly average for commercial flights after 11 PM.

Of the 26 Late-Night Operations, 42% were due to unknown reasons, 39% were due to mechanical issues, 12% were due to air traffic control conditions, 4% occurred during the five-minute grace period and 4% were due to staffing-related issues.

AIRPORT NOISE VIOLATIONS LGB Current Month & Calendar Year-To-Date Statistics June 2019						
June				Calendar Year-To-Date		
Air Carrier Noise Violations	2019	2018	Change	2019	2018	Change
American/Mesa Airlines	3	1	200.0%	7	6	16.7%
Delta/SkyWest/Compass	1	1	0.0%	3	5	-40.0%
FedEx	0	0		0	0	
Hawaiian Airlines	0	0		2	0	200.0%
JetBlue Airways	8	18	-55.6%	44	142	-69.0%
Southwest Airlines	0	0		0	0	
UPS	0	0		1	0	100.0%
Subtotal	12	20	-40.0%	57	153	-62.7%
Commuter Noise Violations	2019	2018	Change	2019	2018	Change
American/SkyWest Airlines	0	0		0	0	
Delta/SkyWest/Compass	0	0		0	0	
Subtotal	0	0		0	0	
Non-Commercial Noise Violations	2019	2018	Change	2019	2018	Change
All GA, Charter & Other	19	9	111.1%	80	66	21.2%
TOTAL	31	29	6.9%	137	219	-37.4%
Monetary Fines	2019	2018		2019	2018	
Airport Surcharges	\$4,200	\$6,100		\$20,500	\$37,300	
Consent Decree	\$48,000	\$84,000		\$228,000	\$642,000	
TOTAL	\$52,200	\$90,100		\$248,500	\$679,300	

AIRPORT OPERATIONS LGB Current Month & Calendar Year-To-Date Statistics June 2019						
June				Calendar Year-To-Date		
Airport Operations (FAA)	2019	2018	Change	2019	2018	Change
Air Carrier + Commuter Carriers	2,824	2,969	-4.9%	15,872	18,406	-13.8%
Air Taxi + General Aviation	24,593	18,798	30.8%	136,993	119,021	15.1%
Military Operations	92	136	-32.4%	667	837	-20.3%
Total Aircraft Operations	27,509	21,903	25.6%	153,532	138,264	11.0%

Notes:

0.1% (31 of 27,417) of the Airport's total aircraft operations (Commercial & GA) resulted in an aircraft noise violation.

0.4% (12 of 2,824) of the Airport's Commercial operations (Commercial & Commuter) resulted in an aircraft noise violation.

AIRCRAFT NOISE VIOLATORS

June 2019

OWNERNAME	DATE	TIME	A/D	RWY	FLIGHT #	A/C TYPE	ORIG/DEST	SEL	LIMIT	STATUS
Private	6/1/2019	11:56:05	A	26R		AEST		90.2	88.0	VIO
JWJ Leasing LLC	6/1/2019	23:09:43	A	30		CL30		89.6	79.0	VIO
Sierra Systems	6/2/2019	20:32:51	A	26R		C337		96.5	88.0	VIO
7861Y LLC	6/3/2019	14:31:04	A	26R		PA30		92.3	88.0	VIO
Wings & Wheels LLC	6/4/2019	2:36:02	D	12		C750		83.7	79.0	VIO
MF Aviation LLC	6/5/2019	23:15:04	A	30		C560		85.0	79.0	VIO
JetBlue Airways	6/6/2019	0:42:34	A	30	JBU1013	A320	JFK	92.9	79.0	VIO + Alt Enf
MLW Aviation LLC	6/7/2019	0:35:21	D	30		B752		92.8	79.0	VIO
Private	6/7/2019	23:39:52	A	30		PA44		81.1	79.0	VIO
Aeronaves T.S.M.	6/13/2019	17:32:59	D	30		DC91		106.7	102.5	VIO
JetBlue Airways	6/13/2019	23:39:16	A	26R	JBU405	A320	BOS	93.5	N/A	VIO + Alt Enf
Bank of Utah Trustee	6/14/2019	17:20:35	A	26R		GA8		90.1	88.0	VIO
JetBlue Airways	6/14/2019	23:59:47	A	26R	JBU679	A320	LAS	93.7	N/A	VIO + Alt Enf
Private	6/16/2019	2:07:28	D	30		M20P		84.2	79.0	VIO
Athene Noctua LLC	6/16/2019	23:12:00	A	30		GLF4		88.4	79.0	VIO
Go Far Aviation LLC	6/17/2019	2:59:01	A	30		C525		85.8	79.0	VIO
BCJA LLC	6/17/2019	4:12:27	D	12		PRM1		88.8	79.0	VIO
NetJets Inc.	6/19/2019	22:31:01	D	30		GLEX		93.7	90.0	VIO
Delta / SkyWest / Compass Airlines	6/20/2019	22:12:18	A	30		E75L		93.0	90.0	VIO
JetBlue Airways	6/20/2019	23:17:43	D	30	JBU504	A320	BOS	96.3	79.0	VIO + Alt Enf
Eight Ball Flying Club Inc.	6/21/2019	0:29:59	D	30		C182		81.2	79.0	VIO
Stealthlear	6/23/2019	23:15:06	D	30		LJ45		84.2	79.0	VIO
JetBlue Airways	6/24/2019	23:55:40	A	30	JBU1925	A320	SJC	92.4	79.0	VIO + Alt Enf
JetBlue Airways	6/25/2019	23:16:35	D	30	JBU14	A320	JFK	95.2	79.0	VIO + Alt Enf
Deer Jet Co. Ltd.	6/25/2019	23:36:01	D	30		GLF6		86.9	79.0	VIO
American Airlines	6/25/2019	23:36:14	A	30	ASH5719	CRJ9	PHX	92.4	79.0	VIO
JetBlue Airways	6/26/2019	0:02:10	A	30	JBU347	A320	OAK	92.4	79.0	VIO + Alt Enf
JC Air Academy Inc.	6/29/2019	1:14:05	D	30		C172		84.4	79.0	VIO
American Airlines	6/30/2019	23:10:45	A	30	ASH5896	CRJ9	PHX	91.6	79.0	VIO

AIRCRAFT NOISE VIOLATORS

June 2019

OWNERNAME	DATE	TIME	A/D	RWY	FLIGHT #	A/C TYPE	ORIG/DEST	SEL	LIMIT	STATUS
American Airlines	6/30/2019	23:41:29	D	30	ASH5896	CRJ9	PHX	87.7	79.0	VIO
JetBlue Airways	6/30/2019	23:57:17	A	30	JBU531	A320	SLC	93.8	79.0	VIO + Alt Enf

DEFINITIONS:

A/C Type — Aircraft Type

RWY — Runway

A/D — Arrival / Departure

SEL — SENEL — Single Event Noise Exposure Level (dBA)

ALT ENF — Alternative Enforcement

VIO — Violation

AIR CARRIER NOISE BUDGET PERFORMANCE

July 2018 - June 2019

RMT #	NOISE BUDGET	ACTUAL	PERCENT BUDGET USED
9	70.7	52.1	73.7%
10	84.6	75.2	88.9%

DEFINITIONS:

RMT — Remote Monitoring Terminal

TOTAL NOISE BUDGET PERFORMANCE

July 2018 - June 2019

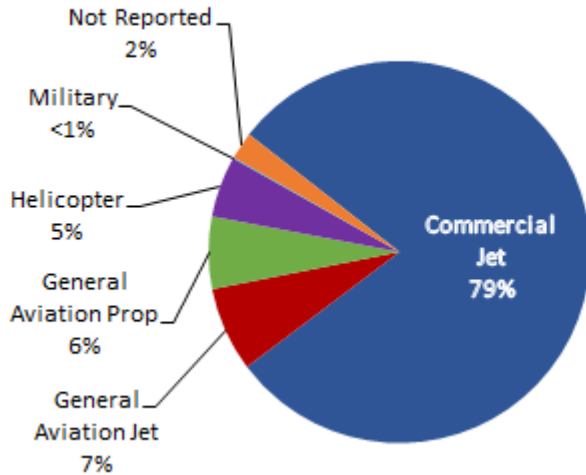
RMT #	NOISE BUDGET	ACTUAL	PERCENT BUDGET USED
9	102.7	61.3	59.7%
10	120.9	87.7	72.5%

Source: AAAI Staff Calculations

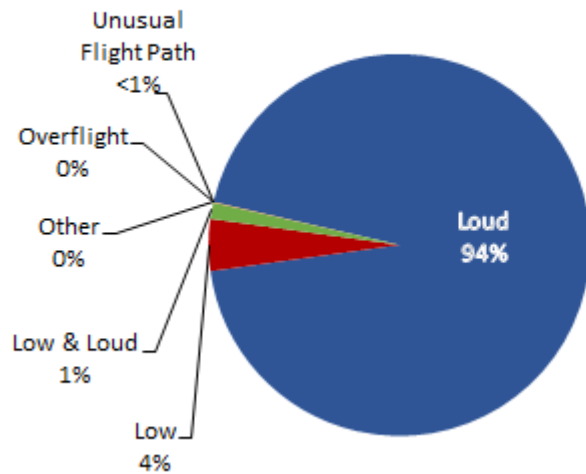
LGB AIRCRAFT NOISE COMPLAINTS

June 2019

Complaints by Aircraft Types



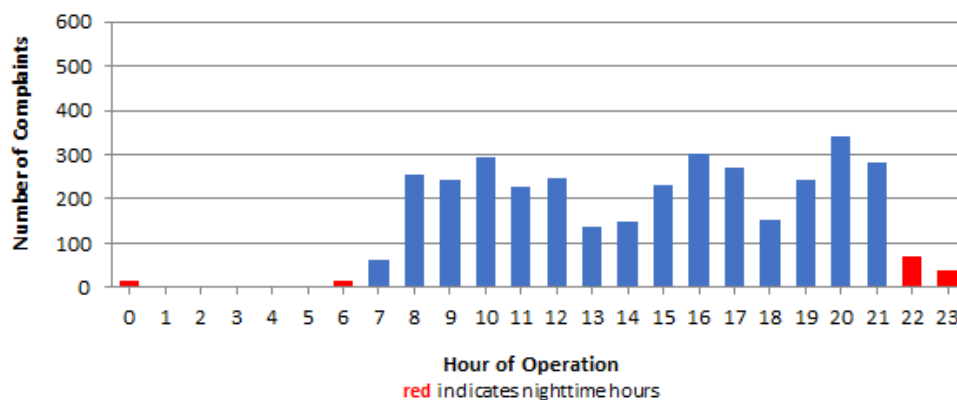
Complaints by Concern



Complaints by Zip Code

Zip Code	Complaints	Units
90278	175	3
90501	1	1
90504	1	1
90712	1	1
90731	1	1
90740	13	1
90755	3	2
90803	3	2
90805	23	2
90806	1	1
90807	32	12
90808	11	7
90814	1	1
90815	3	2
92612	43	1
92626	418	1
92627	12	5
92629	5	1
92646	10	1
92647	963	6
92648	1,459	23
92649	347	5
92651	3	1
92656	1	1
92660	28	8
92662	10	2
92663	5	2
92677	7	1
Not Reported	2	2
Grand Total	3,582	71

Complaints by Time of Operation





long beach airport



Long Beach Airport

4100 E. Donald Douglas Drive, Long Beach, CA 90808

www.lgb.org • lgbapt@longbeach.gov

Administration • (562) 570-2619