

Airport Advisory Commission

Wayne Chaney Sr.
Chair

Jeffrey Anderson
Vice Chair

Alvaro Castillo

Rita Nayak

Geetanjali Reuben

Jeff Rowe

Roland B. Scott, Jr.

Mary Sophiea



Airport Management

Claudia Lewis
Interim Airport Director

Juan López-Ríos
Deputy Airport Director

Ken Mason
Executive Assistant

Ron Reeves
Airport Operations Manager

Ambi Thurai
Engineering Officer

Dale Worsham
Administrative Officer

Karl Zittel
Airside Operations Officer

Matthew Brookes
Airport Properties Officer

Scott Garrett
Facilities Management Officer

Mony Chhey
Financial Services Officer

Scott Korobkin
Superintendent of Safety and Security

Ryan McMullan
Noise & Environmental Affairs Officer



Long Beach Airport Monthly Noise Report April 2019

COMMERCIAL AIRCRAFT LATE NIGHT ACTIVITY
LGB Current Month & Calendar Year-To-Date Statistics (10 PM- 7AM)
April 2019

April				Calendar Year-To-Date		
10PM - 11PM Activity	2019	2018	Change	2019	2018	Change
Air Carrier & Commuter Operations	2,706	3,080	-12.1%	10,185	12,277	-17.0%
American/Mesa/SkyWest Airlines	0	3	-100.0%	2	13	-84.6%
Delta/SkyWest/Compass Airlines	1	0	100.0%	12	9	33.3%
FedEx	0	0		0	0	
Hawaiian Airlines	0	0		3	0	300.0%
JetBlue Airways	10	30	-66.7%	54	151	-64.2%
Southwest Airlines	0	3	-100.0%	3	4	-25.0%
UPS	0	0		0	0	
Subtotal 10PM-11PM	11	36	-69.4%	74	177	-58.2%
11PM- 7AM Activity	2019	2018	Change	2019	2018	Change
American/Mesa/SkyWest Airlines	0	0		0	2	-100.0%
Delta/SkyWest/Compass Airlines	0	1	-100.0%	3	4	-25.0%
FedEx	0	0		0	0	
Hawaiian Airlines	0	0		1	0	100.0%
JetBlue Airways	6	17	-64.7%	28	80	-65.0%
Southwest Airlines	0	0		0	0	
UPS	1	0	100.0%	2	0	200.0%
Subtotal 11PM-7AM	7	18	-61.1%	34	86	-60.5%
TOTAL	18	54	-66.7%	108	263	-58.9%

Notes:

0.7% (18 of 2,706) of total commercial operations occurred between 10pm - 7am.

0.6 flights - Nightly average for all late night (10:00 PM—7:00 AM) commercial flights, includes unanticipated delays.

0.2 flights - Nightly average for commercial flights after 11 PM.

Of the 18 Late-Night Operations, 28% were due to staffing-related issues, 17% were due to mechanical issues, 17% were due to air traffic control conditions, 11% were due to ferry flight operations, 6% were due to poor weather conditions, 6% were due to catering issues, 6% were due to IT-related issues, 6% occurred during the five-minute grace period, and 6% were due to unknown reasons.

AIRPORT NOISE VIOLATIONS LGB Current Month & Calendar Year-To-Date Statistics April 2019									
April					Calendar Year-To-Date				
Air Carrier Noise Violations	2019	2018	Change		2019	2018	Change		
American/Mesa Airlines	0	0			1	5	-80.0%		
Delta/SkyWest/Compass	0	1	-100.0%		2	4	-50.0%		
FedEx	0	0			0	0			
Hawaiian Airlines	0	0			1	0	100.0%		
JetBlue Airways	8	21	-61.9%		32	99	-67.7%		
Southwest Airlines	0	0			0	0			
UPS	0	0			1	0	100.0%		
Subtotal	8	22	-63.6%		37	108	-65.7%		
Commuter Noise Violations	2019	2018	Change		2019	2018	Change		
American/SkyWest Airlines	0	0			0	0			
Delta/SkyWest/Compass	0	0			0	0			
Subtotal	0	0			0	0			
Non-Commercial Noise Violations	2019	2018	Change		2019	2018	Change		
All GA, Charter & Other	16	11	45.5%		47	44	6.8%		
TOTAL	24	33	-27.3%		84	152	-44.7%		
Monetary Fines	2019	2018			2019	2018			
Airport Surcharges	\$3,100	\$7,000			\$13,600	\$23,300			
Consent Decree	\$36,000	\$96,000			\$156,000	\$438,000			
TOTAL	\$39,100	\$103,000			\$169,600	\$461,300			

AIRPORT OPERATIONS LGB Current Month & Calendar Year-To-Date Statistics April 2019									
April					Calendar Year-To-Date				
Airport Operations (FAA)	2019	2018	Change		2019	2018	Change		
Air Carrier + Commuter Carriers	2,706	3,080	-12.1%		10,185	12,277	-17.0%		
Air Taxi + General Aviation	22,810	20,593	10.8%		89,038	80,440	10.7%		
Military Operations	139	149	-6.7%		492	516	-4.7%		
Total Aircraft Operations	25,655	23,822	7.7%		99,715	93,233	7.0%		

Notes:

0.1% (24 of 25,516) of the Airport's total aircraft operations (Commercial & GA) resulted in an aircraft noise violation.
0.3% (8 of 2,706) of the Airport's Commercial operations (Commercial & Commuter) resulted in an aircraft noise violation.

AIRCRAFT NOISE VIOLATORS

April 2019

OWNERNAME	DATE	TIME	A/D	RWY	FLIGHT #	A/C TYPE	ORIG/DEST	SEL	LIMIT	STATUS
Murray Company	4/2/2019	11:36:51	D	26R		C340		94.8	92.0	VIO
Private Brokers	4/3/2019	13:57:17	D	26R		BE58		94.2	92.0	VIO
Operadora De Vuelos Ejecutivos	4/4/2019	23:17:33	A	30		GLF4		90.8	79.0	VIO
Private	4/6/2019	23:09:43	A	30		PA44		82.6	79.0	VIO
JetBlue Airways	4/7/2019	1:01:08	A	30	JBU6125	A320	SJC	91.4	79.0	VIO + Alt Enf
Aircraft LLC	4/7/2019	1:51:51	D	30		F2TH		85.3	79.0	VIO
JetBlue Airways	4/7/2019	23:23:54	A	30	JBU679	A320	LAS	93	79.0	VIO + Alt Enf
Fresh Aircraft Sales LLC	4/7/2019	23:35:42	D	30		BE55		90.1	79.0	VIO
JetBlue Airways	4/10/2019	1:50:23	D	30	JBU7	A320	LAS	86.6	79.0	VIO + Alt Enf
JetBlue Airways	4/11/2019	22:39:23	A	30	JBU504	A320	BOS	92.9	90.0	VIO
FL-337 LLC	4/12/2019	17:38:53	A	26R		B350		91.1	88.0	VIO
Advanced Air LLC	4/13/2019	14:11:26	A	26R		B350		90.2	88.0	VIO
Trans Am Aviation LLC	4/14/2019	6:10:10	D	30		BE40		93.5	90.0	VIO
Flexjet, LLC	4/15/2019	5:27:49	D	30		CL30		85.5	79.0	VIO
LJ60-318 LLC	4/16/2019	2:59:45	D	30		LJ60		85.2	79.0	VIO
Private	4/18/2019	23:14:46	A	30		PA44		81.9	79.0	VIO
JetBlue Airways	4/19/2019	23:34:49	A	30	JBU405	A320	BOS	93.4	79.0	VIO + Alt Enf
JetBlue Airways	4/20/2019	0:01:22	A	30	JBU1013	A320	JFK	93.3	79.0	VIO + Alt Enf
Private	4/22/2019	12:10:33	D	26R		BE95		95.7	92.0	VIO
N4171Q LLC	4/24/2019	11:09:14	A	26R		C340		91	88.0	VIO
IRG Wings LLC	4/26/2019	23:09:29	A	30		GALX		88.7	79.0	VIO
JetBlue Airways	4/27/2019	22:46:30	A	30	JBU405	A320	BOS	93.1	90.0	VIO
Issue V Inc.	4/28/2019	0:33:24	A	30		E55P		88.6	79.0	VIO
JetBlue Airways	4/29/2019	23:53:19	A	30	JBU1925	A320	SJC	92.2	79.0	VIO + Alt Enf

DEFINITIONS:

A/C Type — Aircraft Type

A/D— Arrival / Departure

ALT ENF — Alternative Enforcement

RWY — Runway

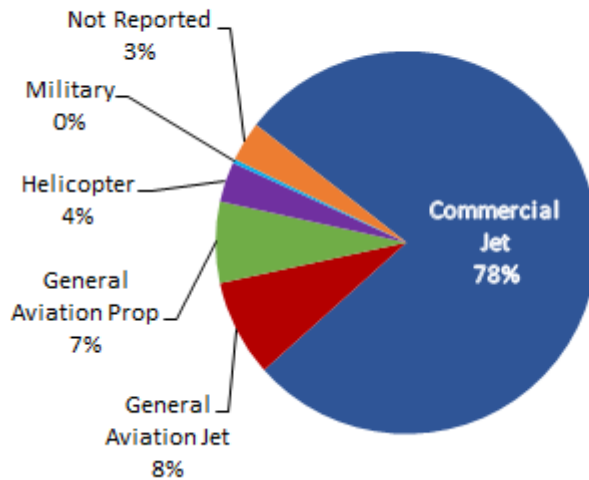
SEL — SENEL — Single Event Noise Exposure Level (dBA)

VIO—Violation

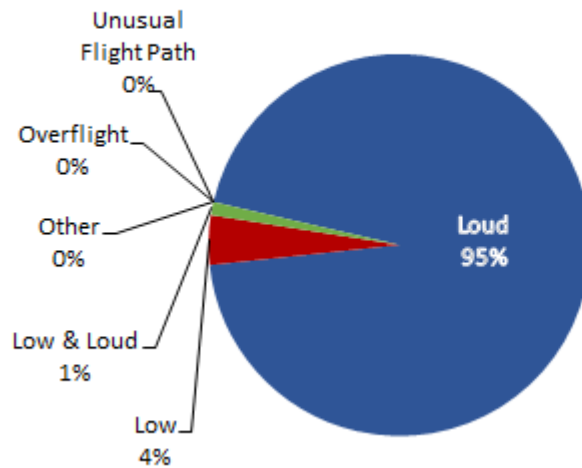
LGB AIRCRAFT NOISE COMPLAINTS

April 2019

Complaints by Aircraft Types



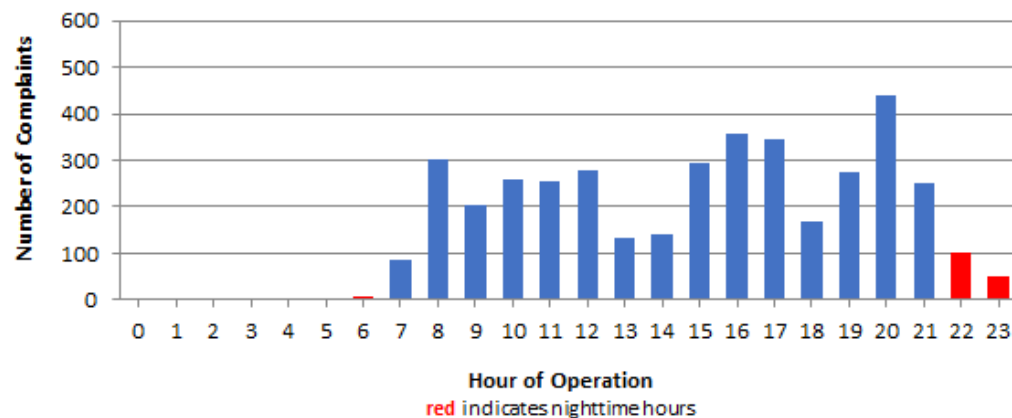
Complaints by Concern



Complaints by Zip Code

Zip Code	Complaints	Units
90248	2	1
90254	9	1
90278	242	3
90504	2	1
90713	1	1
90731	1	1
90740	7	1
90805	11	1
90806	2	1
90807	24	12
90808	4	1
90815	3	3
92612	81	1
92626	528	2
92646	2	1
92647	787	4
92648	1,993	21
92649	227	4
92651	1	1
92660	8	1
92677	20	3
Not Reported	12	9
Grand Total	3,967	74

Complaints by Time of Operation





long beach airport



Long Beach Airport

4100 E. Donald Douglas Drive, Long Beach, CA 90808

www.lgb.org • lgbapt@longbeach.gov

Administration • (562) 570-2619