

# CAAP

Economic Development  
Commission Update

May 28<sup>th</sup> 2019

*CLIMATE ACTION  
+ ADAPTATION PLAN*



# What is Climate Action/Mitigation?

*Climate Action is...*

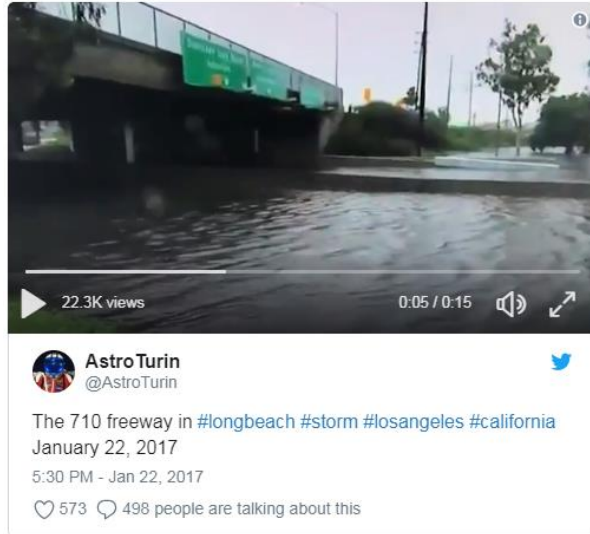


Image Credit: Press Telegram

...about reducing the impact we (people) have on the climate system by reducing future carbon emissions. *(for example, driving less)*

# What is Climate Adaptation?

*Climate Adaptation is...*

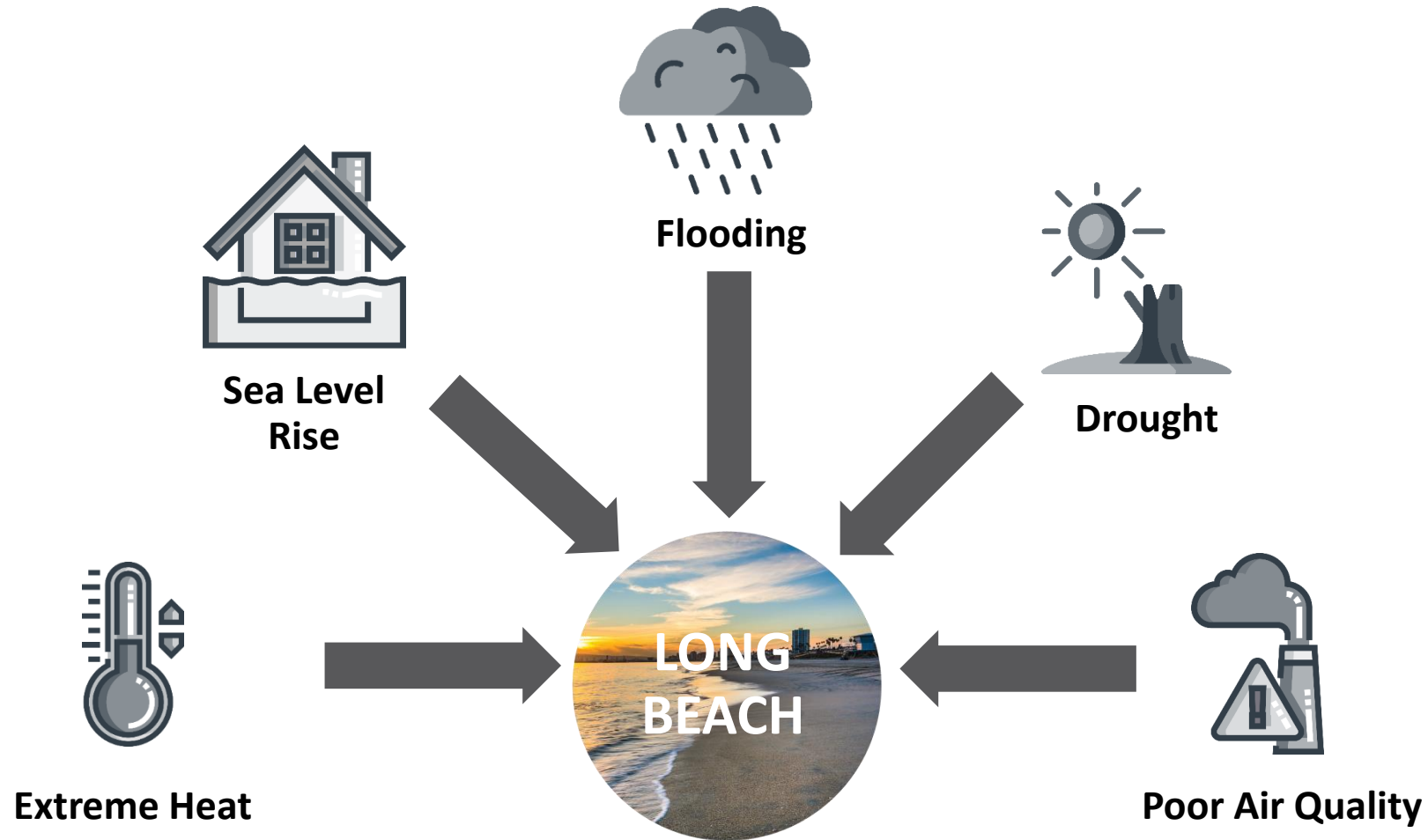


...about adjusting our behaviors, systems, infrastructure, to reduce the impact climate change has on us. *(for example, flood proof a house)*

**Why adaptation?** Because according to research compiled by the UCLA Fielding School of Public Health, 97% of scientific literature agrees that climate change is real, and it is already impacting our health and safety in LA County

Source: 10 Things Every Public Health Professional Should Know About Climate Change, 2014; retrievable at: <http://www.laregionalcollaborative.com/climateandhealth/>

# Climate Hazards Impacting Long Beach





# Community and Infrastructure Assets Likely to be Impacted

- Public Health
- Housing & Neighborhoods
- Businesses
- City buildings
- Transportation infrastructure
- Water Supply
- Wastewater/Stormwater
- Coastal Resources
- Parks and Open Space
- Energy infrastructure



# What is the CAAP?

- ▶ What is a CAAP? A plan to:
  - Reduce greenhouse gas (GHG) emissions
  - Prepare the community for the impacts of climate change
  - Improve the quality of life
  - Enhance economic vitality in Long Beach
- How?
  - 20+ year framework for creating or updating policies, programs, practices, and incentives for Long Beach residents and businesses to reduce the City's GHG footprint, and ensure the community and physical assets are better protected from the impacts of climate change





# CAAP Outreach Process





# CAAP and the Economic Blueprint

## QUALITY OF LIFE-

### Quality of Life Objectives Related to CAAP:

- Increase investment in strategies that enhance public safety in all areas of Long Beach.
- Increase access to workforce housing at all market levels.
- Increase active transportation and public transportation options across all areas of Long Beach.
- Increase public parkland per 1,000 people with an emphasis on “park poor” areas.
- Increase the share of Long Beach residents working in Long Beach.

### Quality of Life Recommendations Related to CAAP:

3. Invest in the further development of safe, active, transportation infrastructure across the City.
6. Improve air quality in the City’s most impacted neighborhoods by implementing the City’s Livable West Long Beach Plan
8. Implement number of strategies that decrease number of residents that are commuting outside the City for work to create a better jobs-housing balance.

QUALITY OF LIFE



Enhance the City's quality of life while growing businesses, jobs, and investment that support a thriving local economy.

#### OBJECTIVES:

- Increase investment in strategies that enhance public safety in all areas of Long Beach.
  - Increase access to workforce housing at all market levels.
  - Increase active transportation and public transportation options across all areas of Long Beach.
  - Increase the percentage of children and adults
3. Invest in the further development of safe, active transportation infrastructure across the City.
  4. Invest in homeless services that result in employment opportunities, where appropriate, for veterans and individuals experiencing homelessness.
  5. Engage the health care and public health sectors in strategies to connect all residents in Long Beach to physical and mental health services.
  6. Improve air quality in the City's most impacted neighborhoods by implementing the City's Livable West Long Beach Plan.



# CAAP and the Economic Blueprint

## Engines Of Growth

8. Continuously assess opportunities to invest and enhance the desirability of the Long Beach Convention & Entertainment Center.
9. Develop a strategy to grow Transient Occupancy Tax and tourism-related revenues in the City.
10. Explore, develop, and implement plans to utilize the waterfront as an economic driver for leisure, hospitality, and retail sectors.
11. Promote the development of renewable energy and emerging greenhouse gas technologies.

## Jobs And Workforce Development

Objective- Increase the number of green job training and placement opportunities

## Development Environment:

3. Modernize land use regulations, entitlement, and permitting processes to reflect new economic opportunities and streamline the development process.

**Business Assistance** 14. Create incentives that encourage business owners to pursue environmentally sustainable practices.

## Economic Inclusion

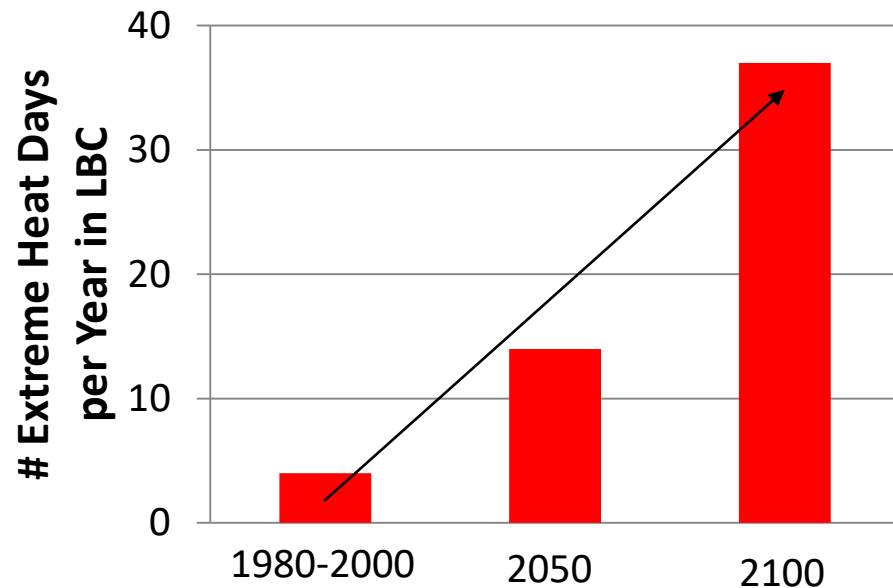
1. Develop plans and strategies to attract investment, improve business corridors, encourage business formation and retention, and support job creation in low-income communities.
4. Assess the value of establishing Community Revitalization & Improvement Areas or Enhanced Infrastructure Financing Districts in low-income areas.
5. Partner with lenders to achieve greater access to capital among business owners of color and women in low-income neighborhoods.
8. Develop technology training programs for business owners in low-income communities.

# Climate Science Review: Extreme Heat



## MORE FREQUENT AND INTENSE HEAT WAVES

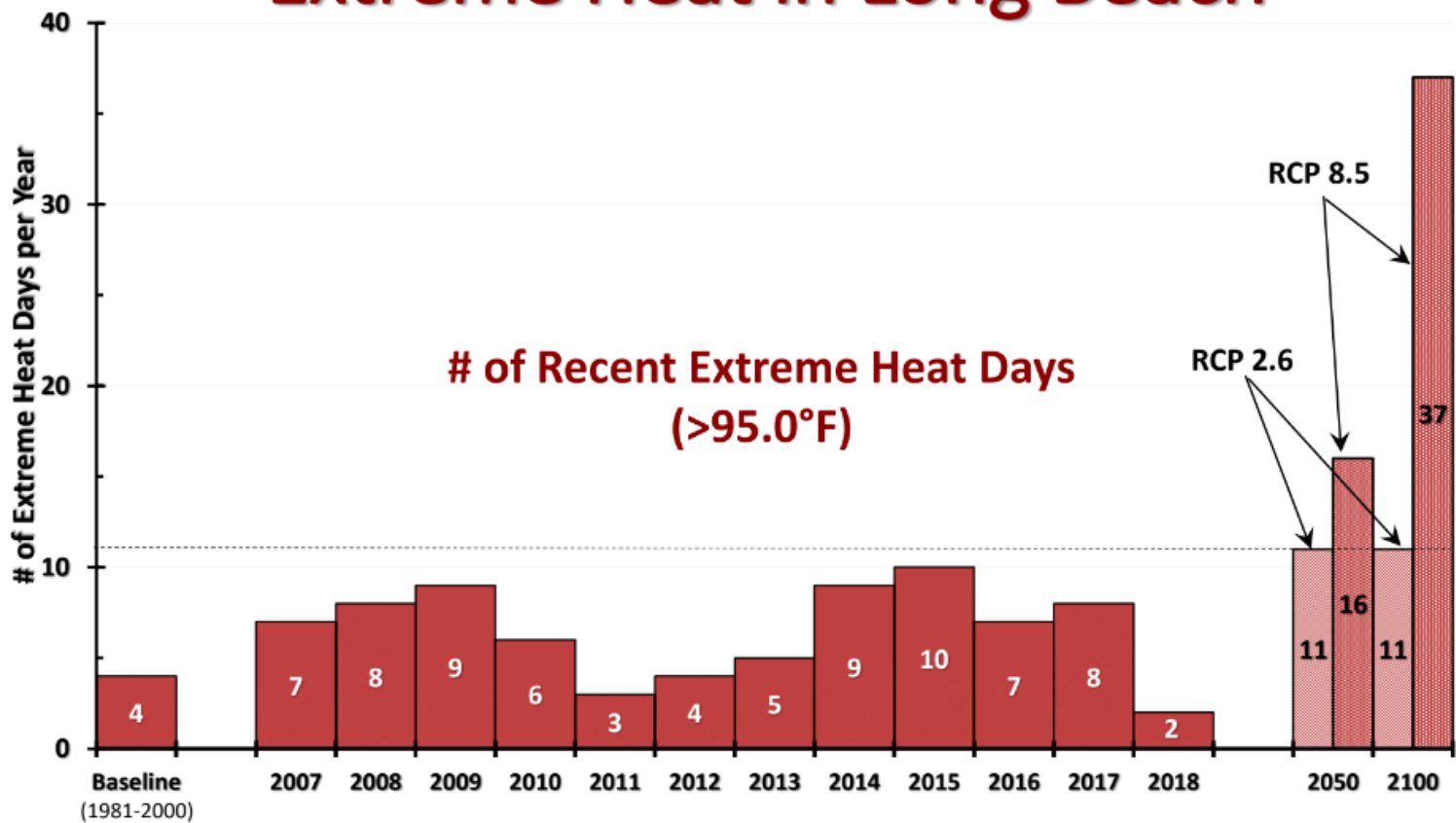
Low income areas and communities of color are more likely to live in areas most vulnerable to urban heat island effect (e.g. North, Central, West Long Beach).



- Approximately **275,000 LB residents** in the high extreme heat vulnerability zone
- Increased risk of heat-related illnesses and death, vector borne diseases, tropical pathogens and parasites
- Particularly vulnerable populations include: children, older adults, people with respiratory diseases, those who work outdoors
- Missed work and school
- Damage to roads, highways, and rail from extreme heat
- Example: Power outages associated with extreme heat



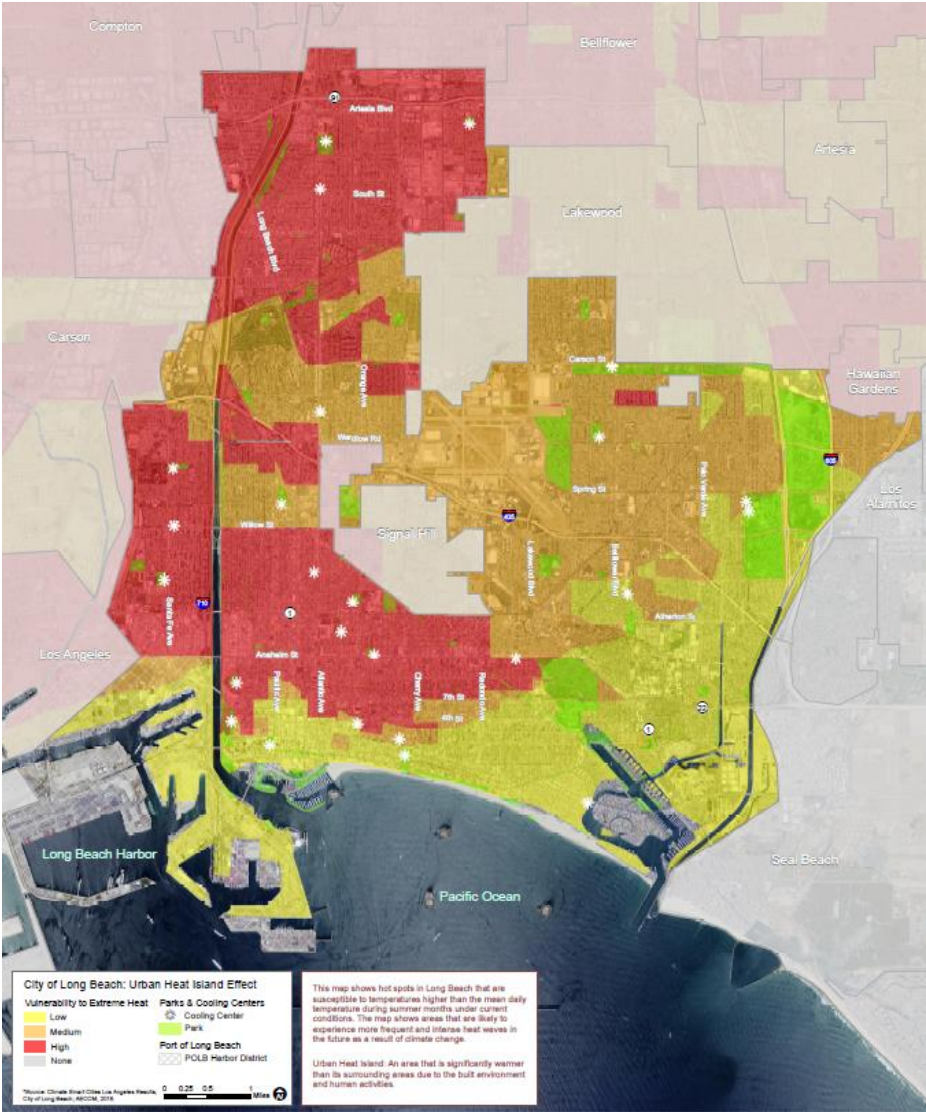
## Extreme Heat in Long Beach



Baseline & Projected Extreme Heat Days based on Sun et al.'s 2015 study  
Long Beach temperatures are from [www.usClimateData.com](http://www.usClimateData.com) , and are current as of August 3, 2018

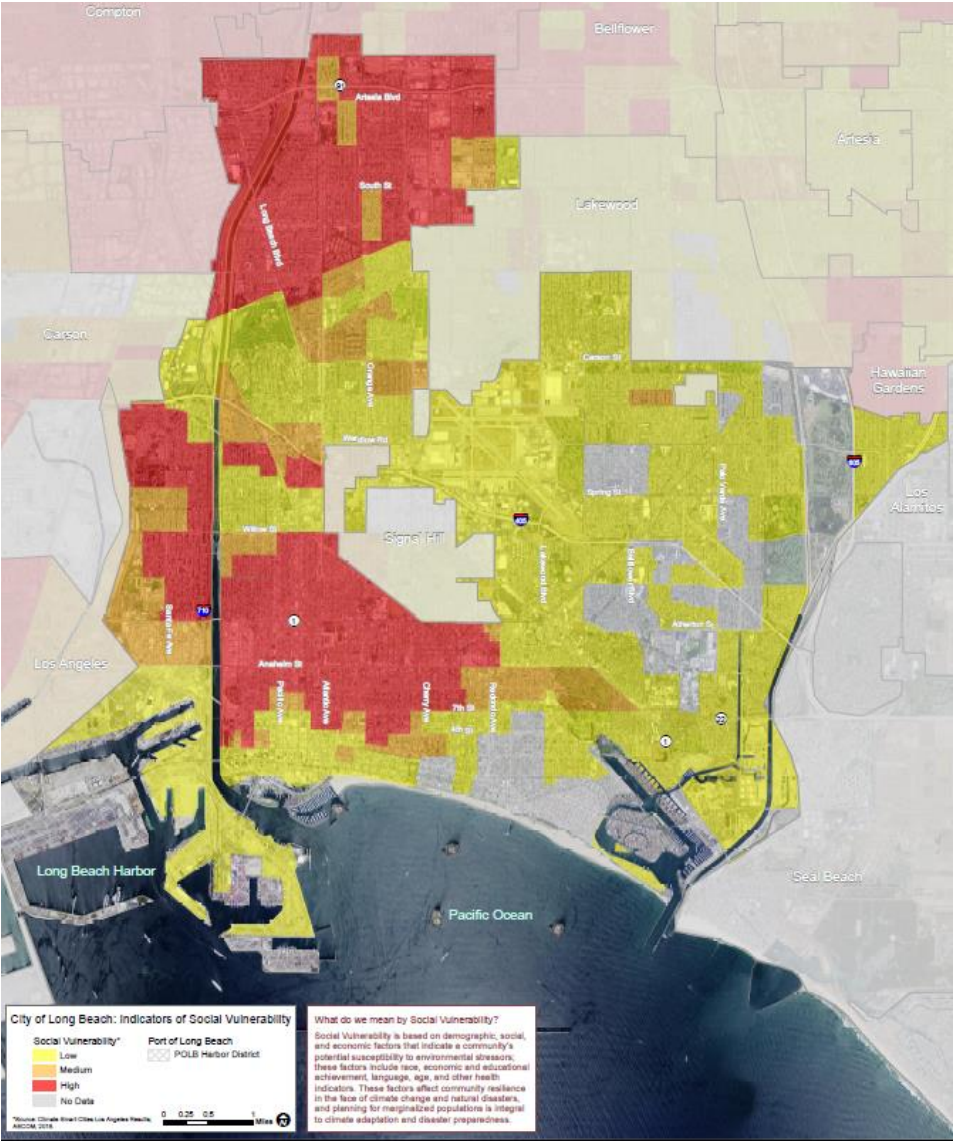


# Extreme Heat Vulnerability Assessment





# Social Vulnerability to Climate Change

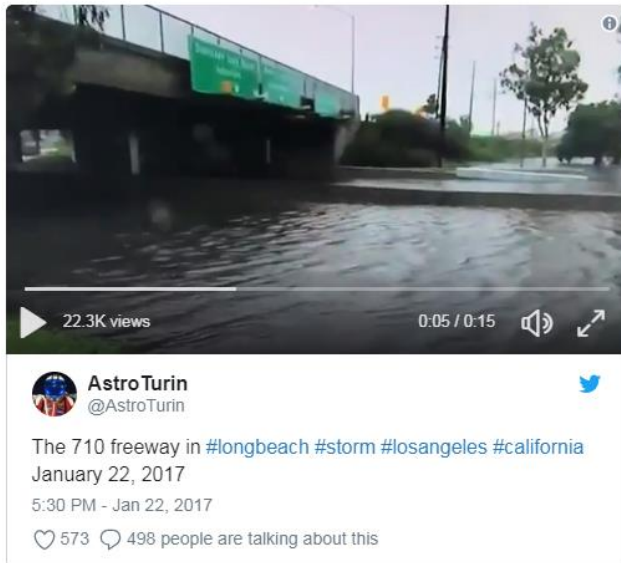


# Flooding Impacts on Long Beach



## 3 SOURCES OF FLOODING IN LB:

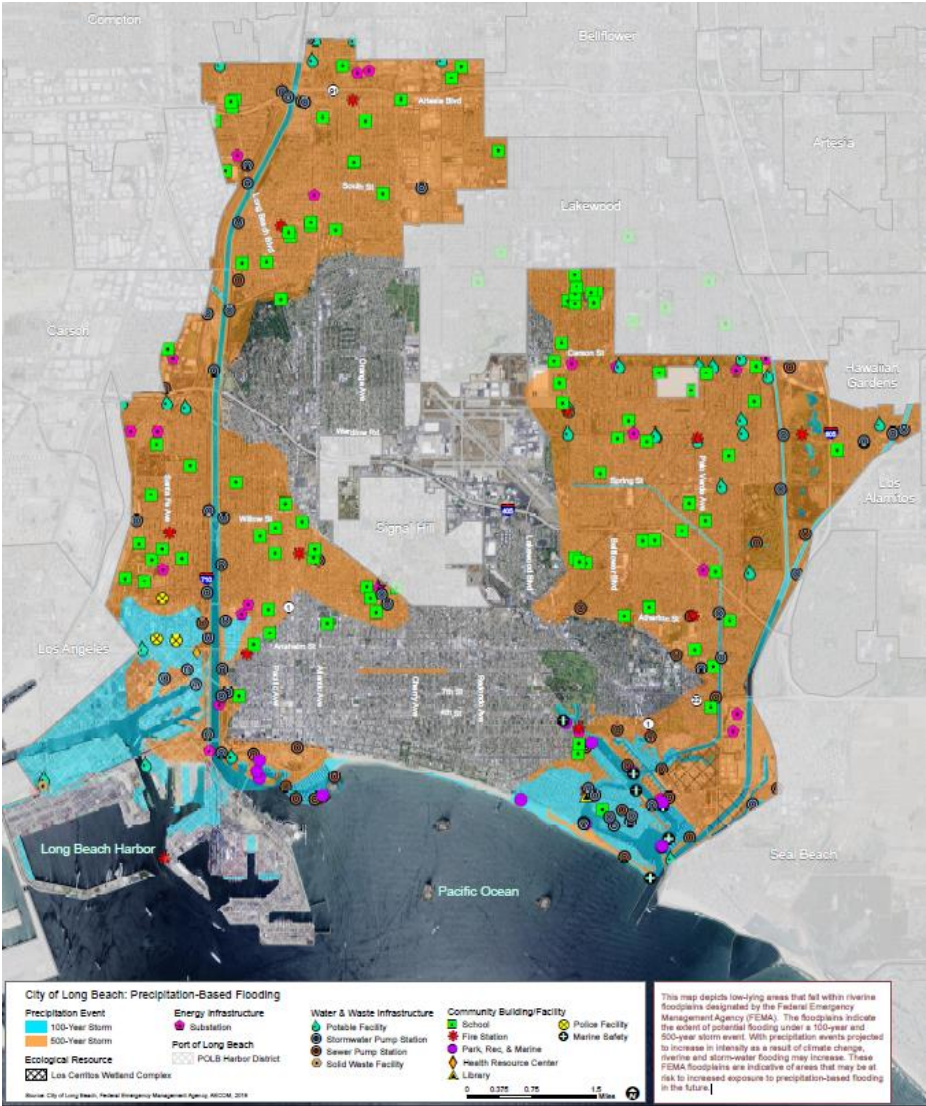
- Riverine flooding
- Urban flooding
- Sea level rise & coastal storms



- Flooding events may contribute to injury, death, displacement, mental health burden
- According to analysis by the Aquarium, over 22,000 residents are at risk of exposure to flooding from sea level rise and coastal storms by 2050
- Damage to wastewater infrastructure and sewage backup/overflow in flooding event
- Sewage overflow could result in water and food-borne illness
- Disruptions to the transportation system could impact neighborhood connectivity including access to jobs, goods, services and healthcare

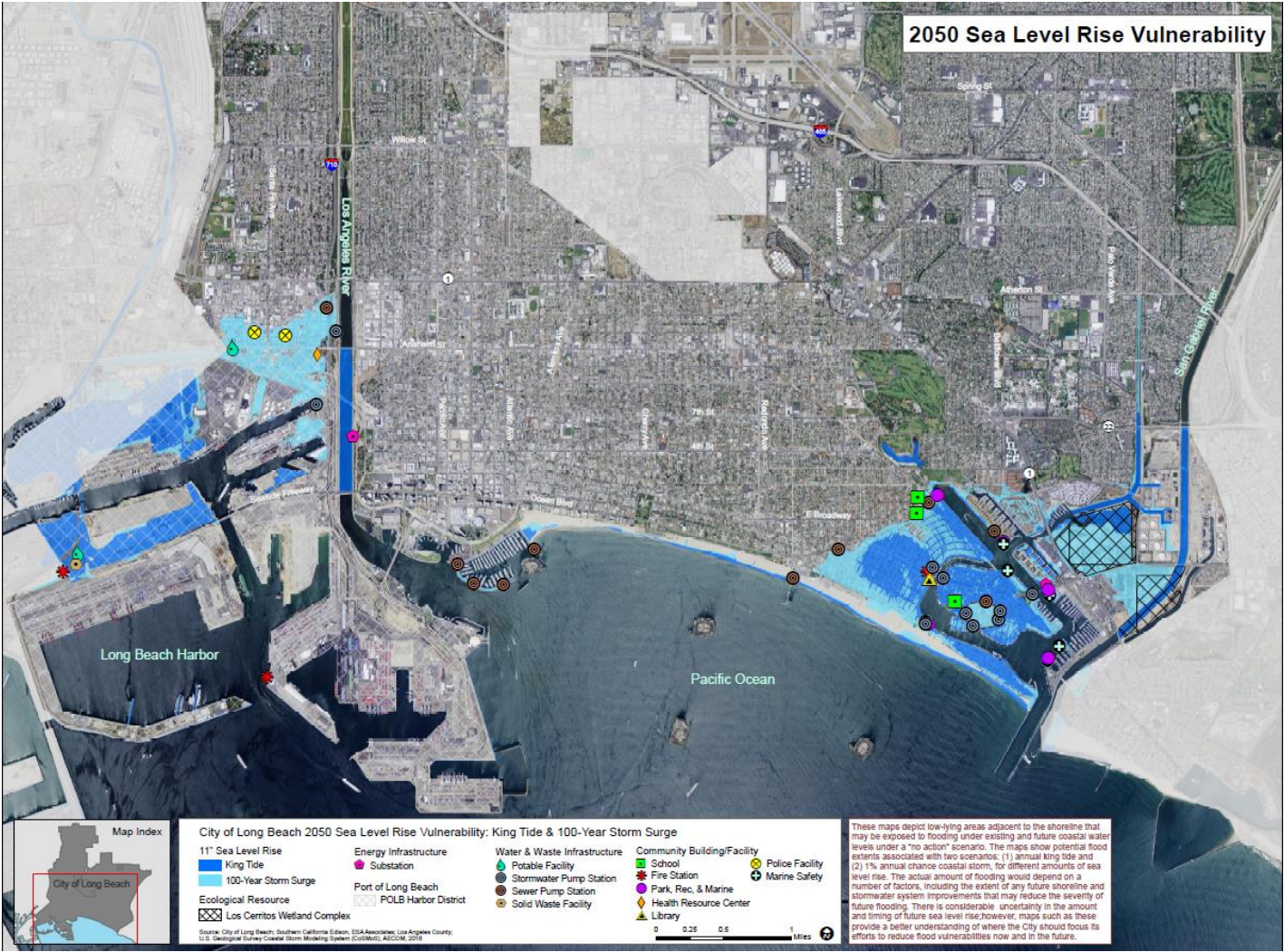


# Vulnerability Assessment: Riverine Flooding





# Vulnerability Assessment: Sea Level Rise 2050

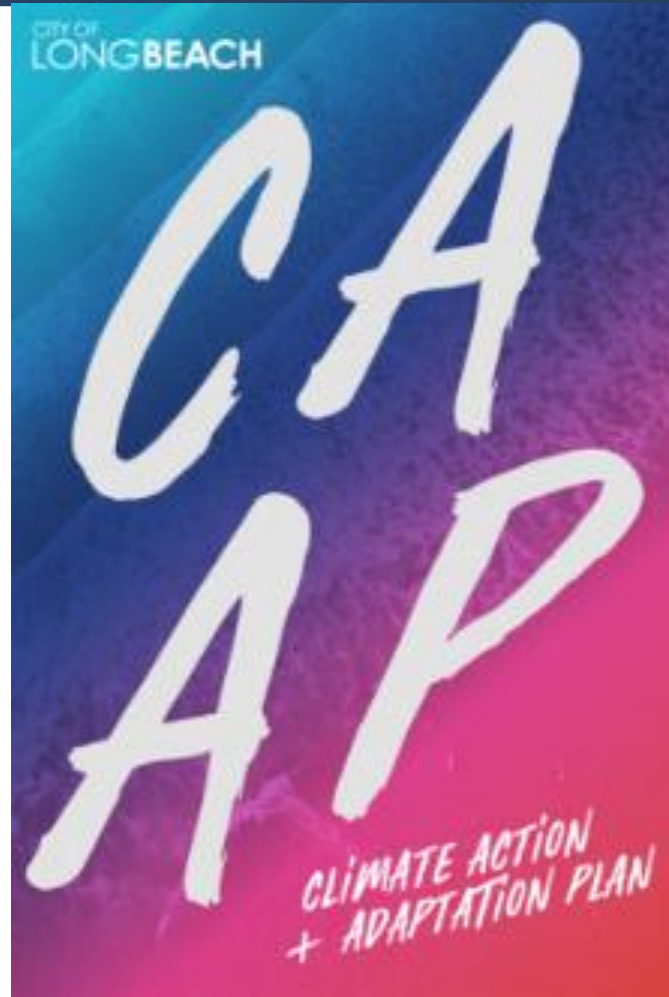




## YOU'RE INVITED!

**CAAP Open House #3**  
**Saturday, June 1, 2019**  
**10am – 1pm**  
***Marine Stadium***

View a summary of the draft CAAP plan,  
participate in interactive activities that will help  
prepare you for climate change  
(presented in partnership with local high school  
groups)



### Can't make it Saturday?

- ✓ Take the CAAP business survey or resident survey:  
[www.lbds.info/climateactionlb](http://www.lbds.info/climateactionlb)
- ✓ Visit the CAAP website for more info on the project:  
[www.lbds.info/climateactionlb](http://www.lbds.info/climateactionlb)
- ✓ #CAAPLB
- ✓ Sign-up for alerts on any of these projects via LinkLB (see website)

SMALL  
CHANGE

BIG  
IMPACT