



# Quality of Life in Long Beach

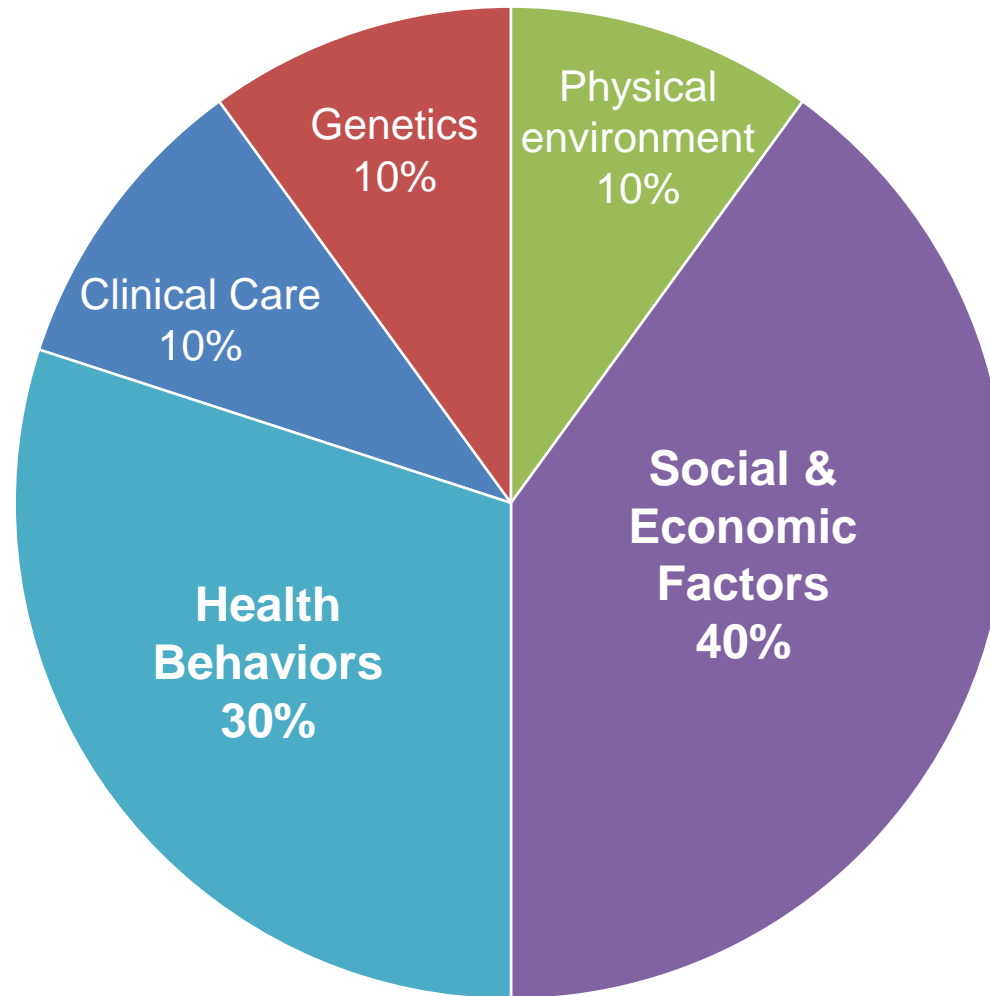
May 28, 2019

**Health is a state of complete  
physical, mental and social well-  
being and not merely the absence of  
disease or infirmity.**

World Health Organization

## Quality of Life

# Factors Leading to Health



Determinants of Health Model based on frameworks developed by: Tarlov AR. *Ann NY Acad Sci* 1999; 896: 281-93; and Kindig D, Asada Y, Booske B. *JAMA* 2008; 299(17): 2081-2083.



# Social Determinants of Health

The complex social and economic circumstances, in which people are born, grow up, live, and work. These circumstances are shaped by a wider set of forces including economics, social policies, and politics. Examples of social determinants of well-being include...

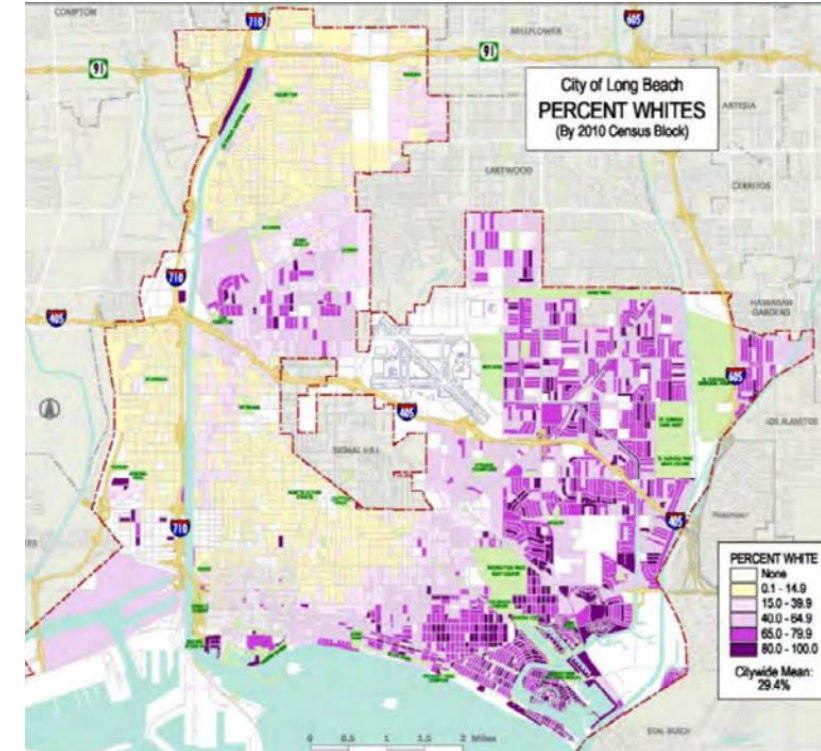
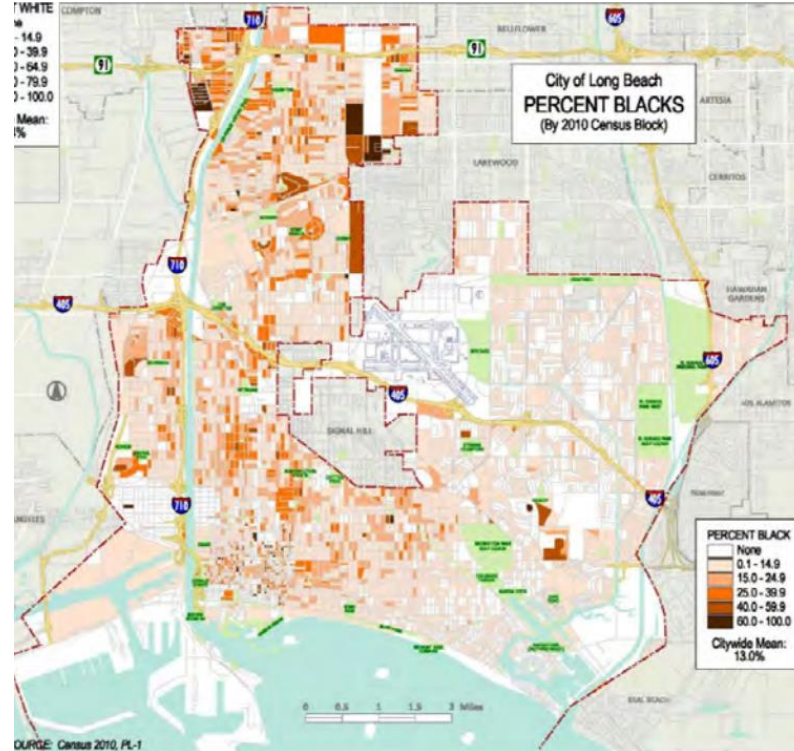


# Social Determinants of Health

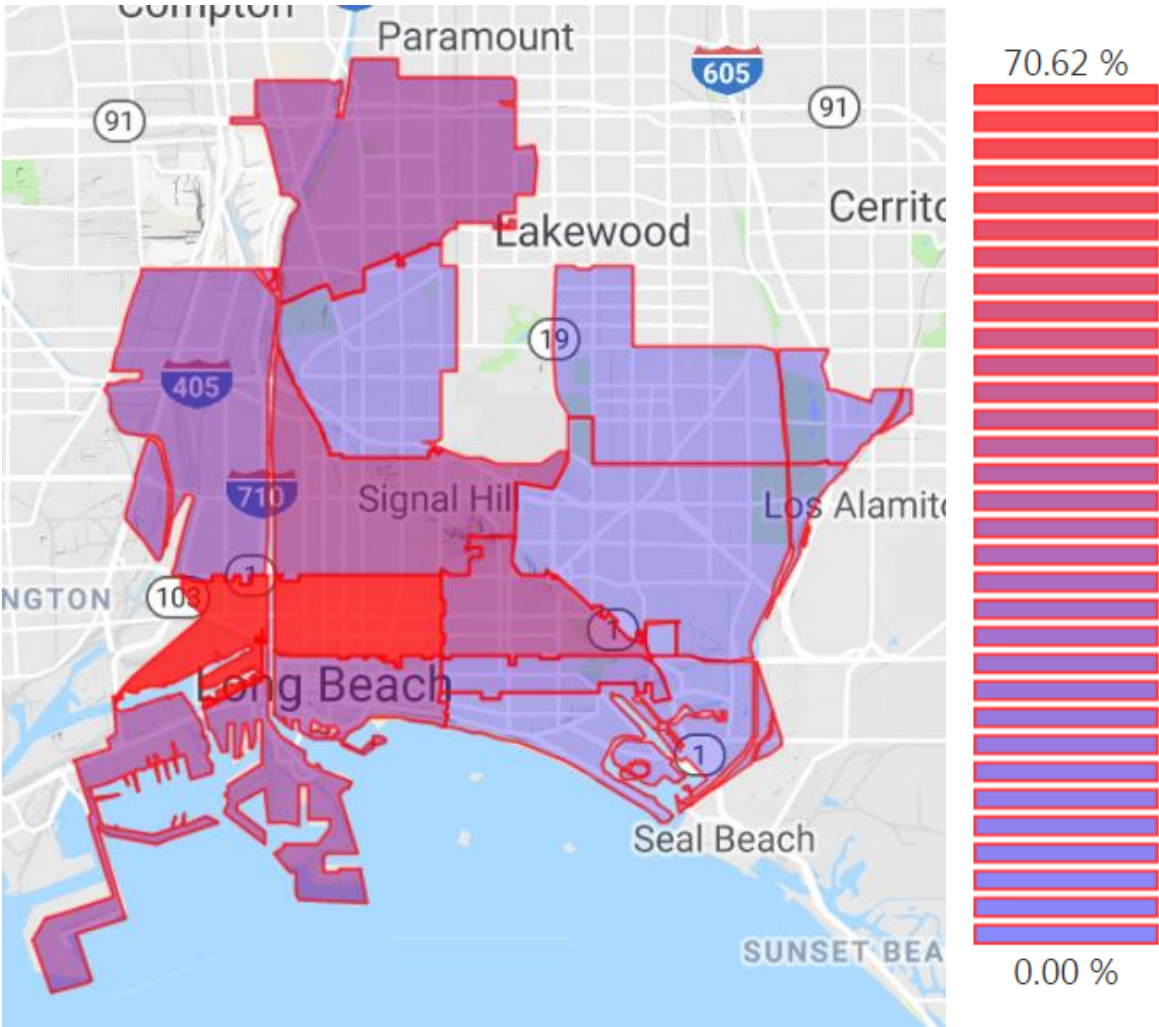
- Social Support
- Healthcare Services
- Transportation
- Education Quality
- Poverty
- Public Safety
- Violence
- Housing
- Physical Environment
- Food Security
- Child Development
- Culture
- Trauma
- Working Conditions



# Distribution Across the City



# Percentage of Poverty



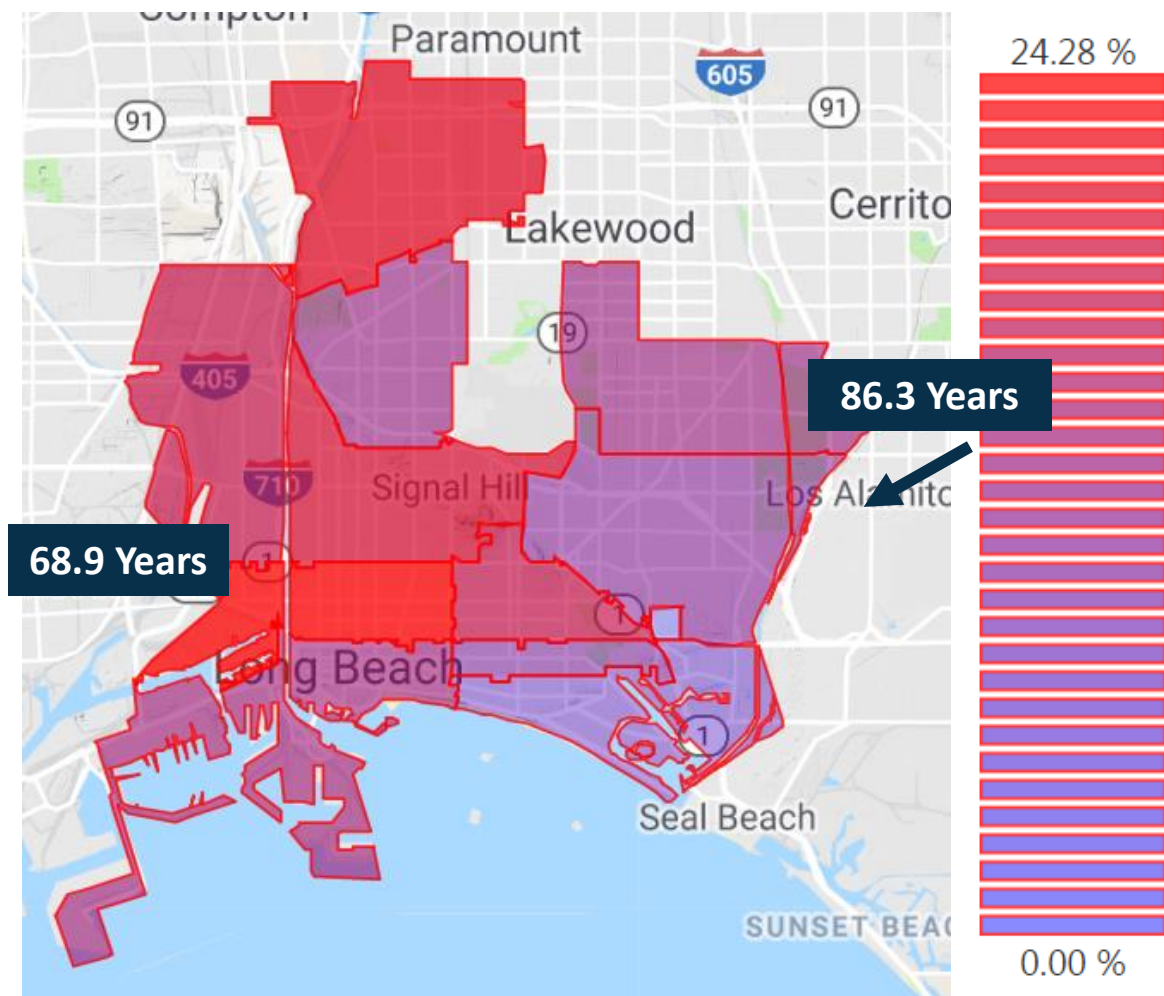
Source: Zip Atlas



## Percentage of Children under Age 10

### Life Expectancy at Birth

East Side: 86.3 -  
West Side: 68.9  
Difference **17.4 years**



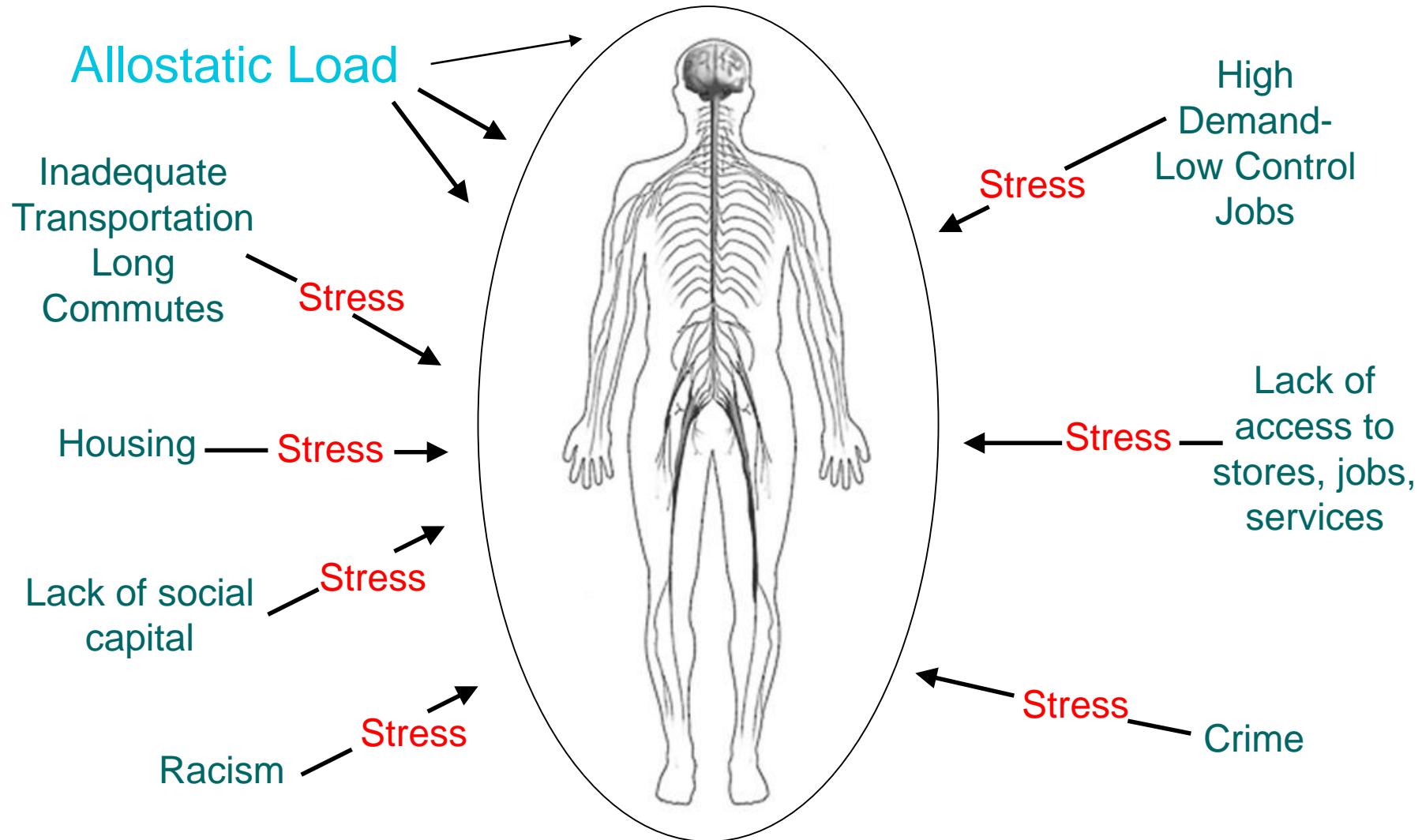
Map Source: Zip Atlas. Life Expectancy Data: Healthy Places Index



<b>Neighborhood Characteristics</b>	<b>West Side Census Tract</b>	<b>East Side Census Tract</b>
<b>Poverty</b>	82.1%	13.6%
<b>Employed Adults</b>	68%	82%
<b>Median Income</b>	\$36,715	\$108,299
<b>Adults with Bachelor's Degree</b>	11.3%	56.7%
<b>Children Not Enrolled in Preschool</b>	35.3%	73.5%
<b>Health Outcomes</b>		
<b>Uninsured</b>	34.5%	5.1%
<b>Asthma ER Admissions (rate per 10,000)</b>	130.75	21.88
<b>Low Birth Weight</b>	8.6	7.1
<b>Life Expectancy</b>	68.9	86.3

# Physical Impacts

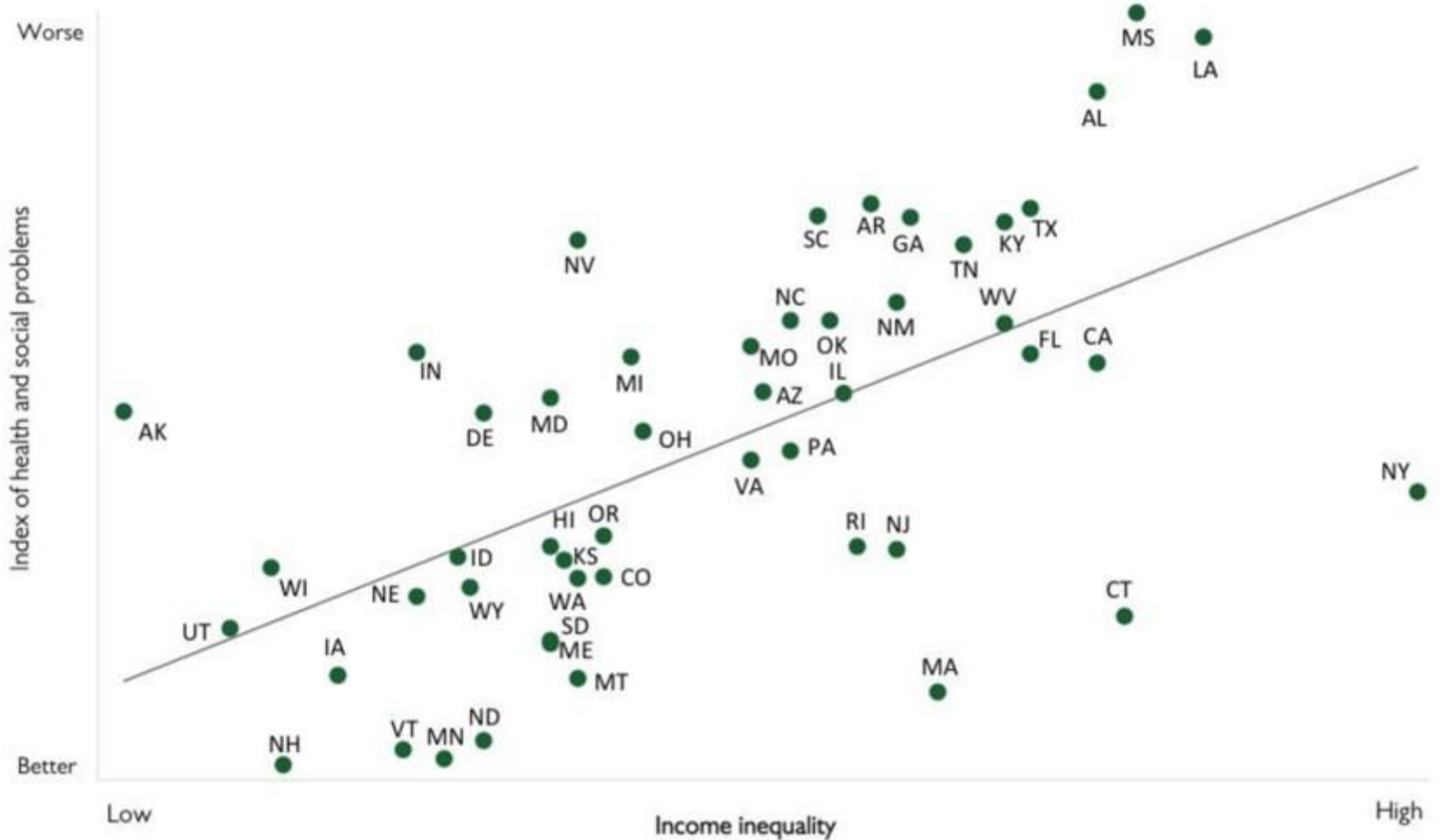
# When the external becomes internal: How we internalize our environment





# Impact of Economic Inequities

# Health and social problems are worse in more unequal US states



Source: Wilkinson & Pickett, *The Spirit Level* (2009)

THE EQUALITY TRUST

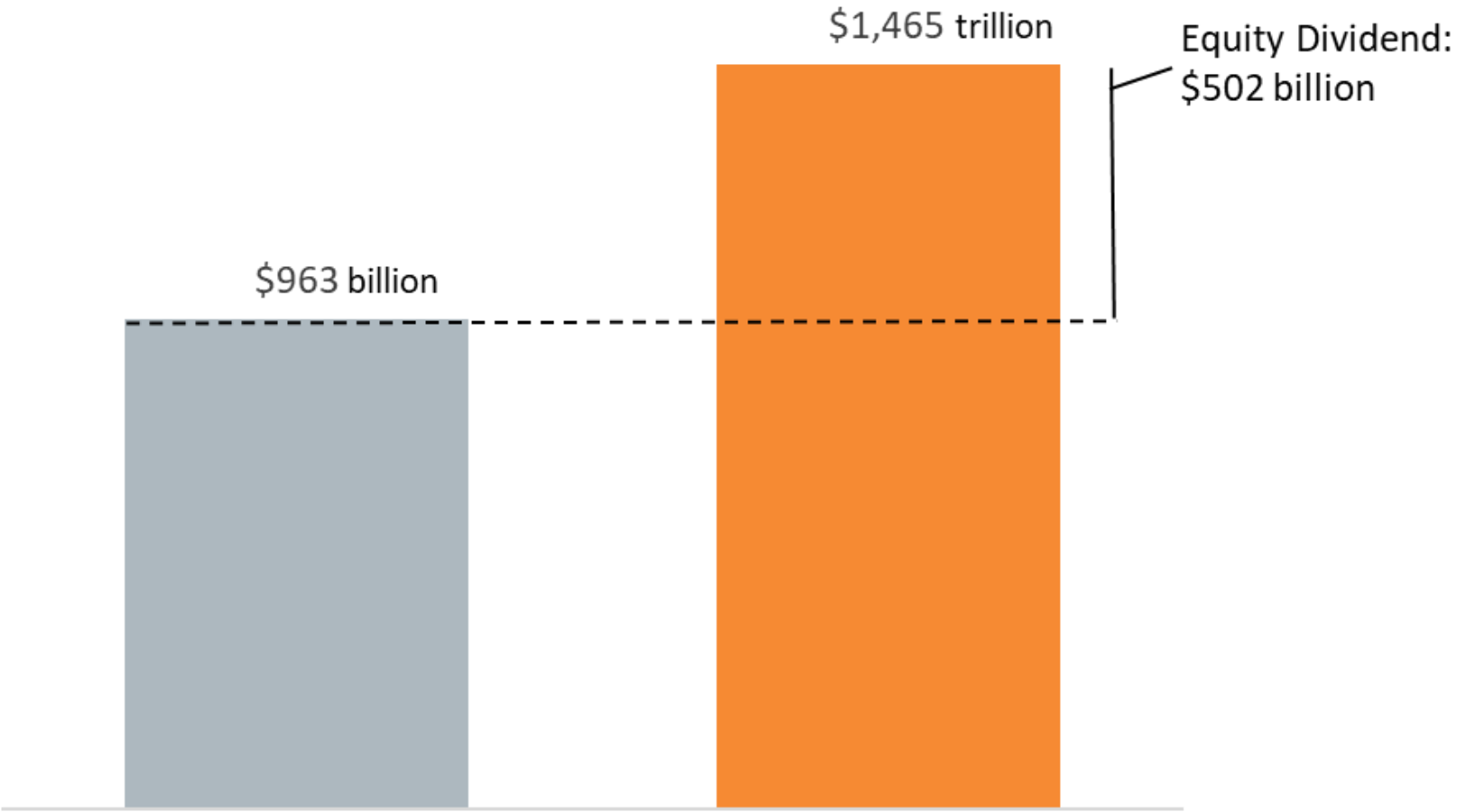
# Cost of Poverty in San Francisco Bay Area

- ***Every additional \$12,500 in household income buys one year of life expectancy***
  - ***Benefit appears to plateau at household incomes above \$150,000***
  - ***Similar gradients in Baltimore, NYC, Philadelphia, Hennepin County (Minneapolis-St. Paul), Colorado, California, AND Cuyahoga County (\$6304/year of life)***

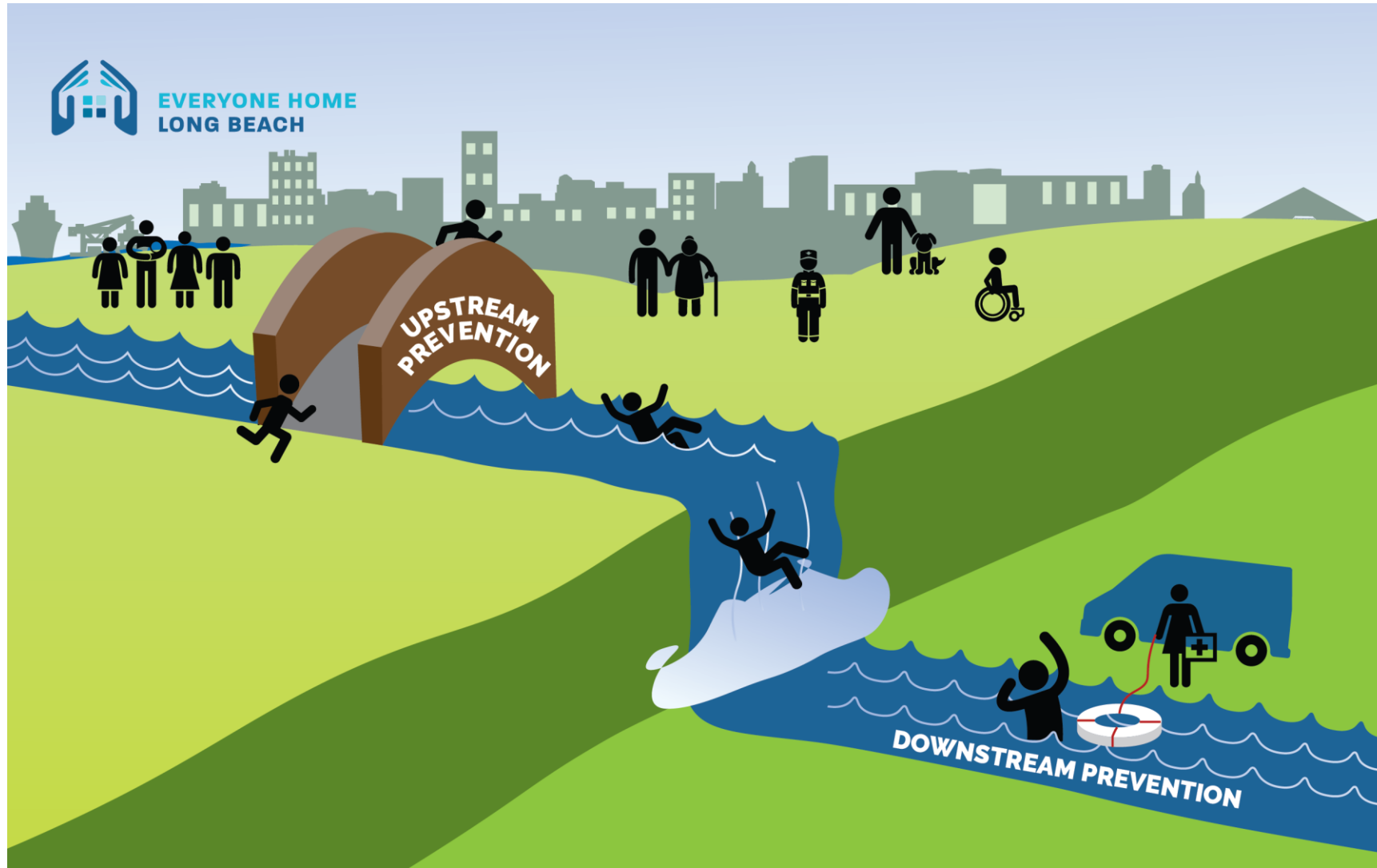


Actual GDP and Estimated  
GDP Without Racial Gaps in  
Income, Los Angeles Metro,  
2015

- GDP in 2015
- GDP if racial gaps in  
income were eliminated



# Our Focus on Prevention





# Early Childhood Strategic Plan

## City of Long Beach, California Early Childhood Education Strategic Plan

2018-2023

### Executive Summary



CITY OF  
LONG BEACH



What's early childhood  
like in the city of

# Long Beach?

Poverty rate for children  
18 and younger:



zip code 90808



zip code 90803

A few miles away in  
zip code 90813, the  
percent of children  
under 18 living in  
poverty increases to:



23%

of children eligible  
for publicly funded  
EC services\*

leaving 16,164 eligible  
children unserved

16,164

In Long Beach, there are

32,474

children

90%

of a child's brain has  
formed by age 5

Average annual child care costs:

\$8,000

for family  
child care

>\$13,000

for center  
child care

35.7%

of children live in house- holds  
with Supplemental Security  
Income (SSI), cash public  
assistance income, or Food  
Stamps/ SNAP benefits



\*Eligibility refers to children who meet state and federal enrollment requirements for childcare subsidies

## All Children Thrive Long Beach

We are the **conveners and catalysts** for young child-  
**focused initiatives** in Long Beach. We accelerate and  
advance change by:

- Modeling and supporting a **human-centered system** of services within and among participating provider agencies
- Advocating for **policy changes** at all levels of government
- Being **accountable** – creating and overseeing a “Long Beach Children’s Dashboard” that tracks progress on focus areas and measures the benefits of ACT interventions (cost savings, cost avoidance, cost benefits)
- Fostering a **learning community** where we share information and resources with service agencies, funders, and residents





**Thank you.**

**Kelly Colopy, Director  
Long Beach Department of Health  
and Human Services**

**[Kelly.colopy@longbeach.gov](mailto:Kelly.colopy@longbeach.gov)**

**562-570-4016**