

## Airport Advisory Commission

**Wayne Chaney Sr.**  
Chair

**Jeffrey Anderson**  
Vice Chair

**Alvaro Castillo**

**Rita Nayak**

**Phil Ramsdale**

**Geetanjali Reuben**

**Jeff Rowe**

**Roland B. Scott, Jr.**

**Mary Sophiea**

## Airport Management

**Claudia Lewis**  
Interim Airport Director

**Juan López-Rios**  
Deputy Airport Director

**Ken Mason**  
Executive Assistant

**Ron Reeves**  
Airport Operations Manager

**Ambi Thurai**  
Engineering Officer

**Dale Worsham**  
Administrative Officer

**Karl Zittel**  
Airside Operations Officer

**Matthew Brookes**  
Airport Properties Officer

**Scott Garrett**  
Facilities Management Officer

**Mony Chhey**  
Financial Services Officer

**Scott Korobkin**  
Superintendent of Safety and Security

**Ryan McMullan**  
Noise & Environmental Affairs Officer



# Long Beach Airport Monthly Noise Report February 2019

**COMMERCIAL AIRCRAFT LATE NIGHT ACTIVITY**  
**LGB Current Month & Calendar Year-To-Date Statistics (10 PM- 7AM)**  
**February 2019**

February				Calendar Year-To-Date		
10PM - 11PM Activity	2019	2018	Change	2019	2018	Change
<b>Air Carrier &amp; Commuter Operations</b>	<b>2,301</b>	<b>2,863</b>	<b>-19.6%</b>	<b>4,886</b>	<b>5,991</b>	<b>-18.4%</b>
American/Mesa/SkyWest Airlines	0	7	-100.0%	2	8	-75.0%
Delta/SkyWest/Compass Airlines	5	3	66.7%	6	5	20.0%
FedEx	0	0		0	0	
Hawaiian Airlines	0	0		2	0	
JetBlue Airways	22	37	-40.5%	31	68	-54.4%
Southwest Airlines	2	0		2	1	100.0%
UPS	0	0		0	0	
<b>Subtotal 10PM-11PM</b>	<b>29</b>	<b>47</b>	<b>-38.3%</b>	<b>43</b>	<b>82</b>	<b>-47.6%</b>
11PM- 7AM Activity	2019	2018	Change	2019	2018	Change
American/Mesa/SkyWest Airlines	0	0		0	1	-100.0%
Delta/SkyWest/Compass Airlines	0	1	-100.0%	0	2	-100.0%
FedEx	0	0		0	0	
Hawaiian Airlines	0	0		1	0	100.0%
JetBlue Airways	11	8	37.5%	18	39	-53.8%
Southwest Airlines	0	0		0	0	
UPS	0	0		0	0	
<b>Subtotal 11PM-7AM</b>	<b>11</b>	<b>9</b>	<b>22.2%</b>	<b>19</b>	<b>42</b>	<b>-54.8%</b>
<b>TOTAL</b>	<b>40</b>	<b>56</b>	<b>-28.6%</b>	<b>62</b>	<b>124</b>	<b>-50.0%</b>

Notes:

1.7% (40 of 2,301) of total commercial operations occurred between 10pm - 7am.

1.4 flights - Nightly average for all late night (10:00 PM—7:00 AM) commercial flights, includes unanticipated delays.

0.4 flights - Nightly average for commercial flights after 11 PM.

Of the 40 Late-Night Operations, 50% were due to mechanical issues, 20% were due to poor weather conditions, 13% were due to air traffic control conditions, 5% were due to staffing-related issues, 5% were due to ferry flights, 5% occurred during the five-minute grace period, and 3% were due to customer-related issues.

<b>AIRPORT NOISE VIOLATIONS</b> <b>LGB Current Month &amp; Calendar Year-To-Date Statistics</b> <b>February 2019</b>						
February				Calendar Year-To-Date		
Air Carrier Noise Violations	2019	2018	Change	2019	2018	Change
American/Mesa Airlines	0	2	-100.0%	1	3	-66.7%
Delta/SkyWest/Compass	0	1	-100.0%	0	2	-100.0%
FedEx	0	0		0	0	
Hawaiian Airlines	0	0		1	0	100.0%
JetBlue Airways	11	14	-21.4%	17	49	-65.3%
Southwest Airlines	0	0		0	0	
UPS	0	0		0	0	
<b>Subtotal</b>	<b>11</b>	<b>17</b>	<b>-35.3%</b>	<b>19</b>	<b>54</b>	<b>-64.8%</b>
Commuter Noise Violations	2019	2018	Change	2019	2018	Change
American/SkyWest Airlines	0	0		0	0	
Delta/SkyWest/Compass	0	0		0	0	
<b>Subtotal</b>	<b>0</b>	<b>0</b>		<b>0</b>	<b>0</b>	
Non-Commercial Noise Violations	2019	2018	Change	2019	2018	Change
All GA, Charter & Other	13	13	0.0%	17	23	-26.1%
<b>TOTAL</b>	<b>24</b>	<b>30</b>	<b>-20.0%</b>	<b>36</b>	<b>77</b>	<b>-53.2%</b>
Monetary Fines	2019	2018		2019	2018	
Airport Surcharges	\$4,500	\$3,600		\$7,200	\$6,100	
Consent Decree	\$60,000	\$48,000		\$96,000	\$222,000	
<b>TOTAL</b>	<b>\$64,500</b>	<b>\$51,600</b>		<b>\$103,200</b>	<b>\$228,100</b>	

<b>AIRPORT OPERATIONS</b> <b>LGB Current Month &amp; Calendar Year-To-Date Statistics</b> <b>February 2019</b>						
February				Calendar Year-To-Date		
Airport Operations (FAA)	2019	2018	Change	2019	2018	Change
Air Carrier + Commuter Carriers	2,301	2,863	-19.6%	4,886	5,991	-18.4%
Air Taxi + General Aviation	20,957	19,210	9.1%	42,914	41,355	3.8%
Military Operations	113	94	20.2%	232	226	2.7%
<b>Total Aircraft Operations</b>	<b>23,371</b>	<b>22,167</b>	<b>5.4%</b>	<b>48,032</b>	<b>47,572</b>	<b>1.0%</b>

Notes:

0.1% (24 of 23,371) of the Airport's total aircraft operations (Commercial & GA) resulted in an aircraft noise violation.  
0.5% (11 of 2,301) of the Airport's Commercial operations (Commercial & Commuter) resulted in an aircraft noise violation.

# AIRCRAFT NOISE VIOLATORS

## February 2019

OWNERNAME	DATE	TIME	A/D	RWY	FLIGHT #	A/C TYPE	ORIG/DEST	SEL	LIMIT	STATUS
Private	2/1/2019	1:05:39	D	30		PA32		88.4	79.0	VIO
Feterik Aviation LLC	2/5/2019	6:53:51	A	30		FA50		95.0	90.0	VIO
BCJA LLC	2/6/2019	2:30:46	D	30		PRM1		81.4	79.0	VIO
JetBlue Airways	2/8/2019	23:17:00	A	30	JBU1635	A320	SFO	94.0	79.0	VIO + Alt Enf
JetBlue Airways	2/8/2019	23:19:11	A	30	JBU1013	A320	DEN	93.6	79.0	VIO + Alt Enf
JetBlue Airways	2/10/2019	23:05:46	A	30	JBU405	A320	BOS	93.2	79.0	VIO + Alt Enf
Idaho Associates LLC	2/11/2019	0:04:38	D	30		GLF4		83.1	79.0	VIO
Air Prestigio LLC	2/12/2019	1:02:36	A	30		GLF4		89.8	79.0	VIO
Pacific Int'l Vegeta- ble Marketing Inc.	2/13/2019	14:12:11	D	8L		C25C		90.6	88.0	VIO
Cathexis Holdings LP	2/13/2019	23:41:16	A	30		F900		88.0	79.0	VIO
JetBlue Airways	2/13/2019	23:58:53	A	30	JBU1013	A320	PHX	93.7	79.0	VIO + Alt Enf
Cathexis Holdings LP	2/14/2019	22:31:18	D	30		F900		95.8	90.0	VIO
JetBlue Airways	2/14/2019	23:17:22	A	30	JBU347	A320	OAK	93.9	79.0	VIO + Alt Enf
JetBlue Airways	2/15/2019	1:22:24	A	30	JBU365	A320	SMF	92.8	79.0	VIO + Alt Enf
JetBlue Airways	2/18/2019	0:24:55	A	30	JBU679	A320	LAS	93.8	79.0	VIO + Alt Enf
JetBlue Airways	2/18/2019	0:56:57	A	30	JBU1179	A320	LAS	92.7	79.0	VIO + Alt Enf
JetBlue Airways	2/19/2019	1:27:04	A	30	JBU679	A320	LAS	92.7	79.0	VIO + Alt Enf
Advanced Air LLC	2/20/2019	16:38:45	A	26R		B350		90.5	88.0	VIO
JetBlue Airways	2/21/2019	22:12:34	A	30	JBU6190	A320	RNO	93.4	90.0	VIO
Helinet Aviation Services LLC	2/22/2019	0:41:32	A	30		AS50		85.3	79.0	VIO
32Eagle LLC	2/23/2019	9:10:24	D	26R		C210		96.0	92.0	VIO
JetBlue Airways	2/26/2019	1:18:50	A	30	JBU679	A320	LAS	93.4	79.0	VIO + Alt Enf
Valley Logistics LLC	2/26/2019	4:24:43	D	30		E55P		85.9	79.0	VIO
Avanti Partners LLC	2/28/2019	17:34:45	A	26L		P180		98.5	93.0	VIO

### DEFINITIONS:

**A/C Type** — Aircraft Type

**A/D** — Arrival / Departure

**ALT ENF** — Alternative Enforcement

**RWY** — Runway

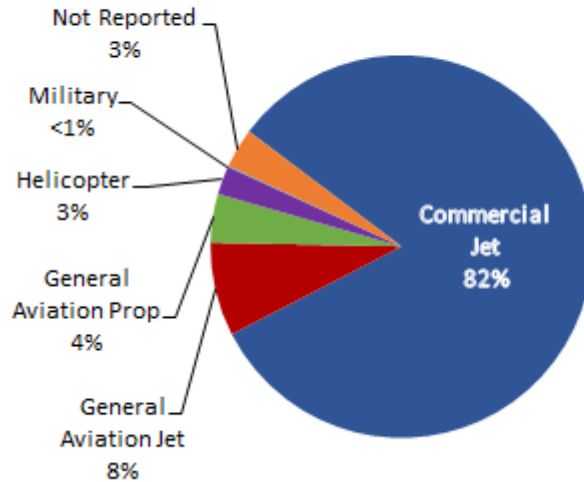
**SEL** — SENEL — Single Event Noise Exposure Level (dBA)

**VIO** — Violation

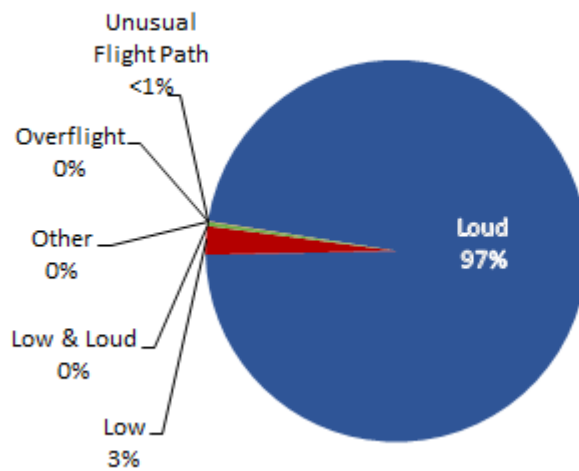
# LGB AIRCRAFT NOISE COMPLAINTS

February 2019

## Complaints by Aircraft Types



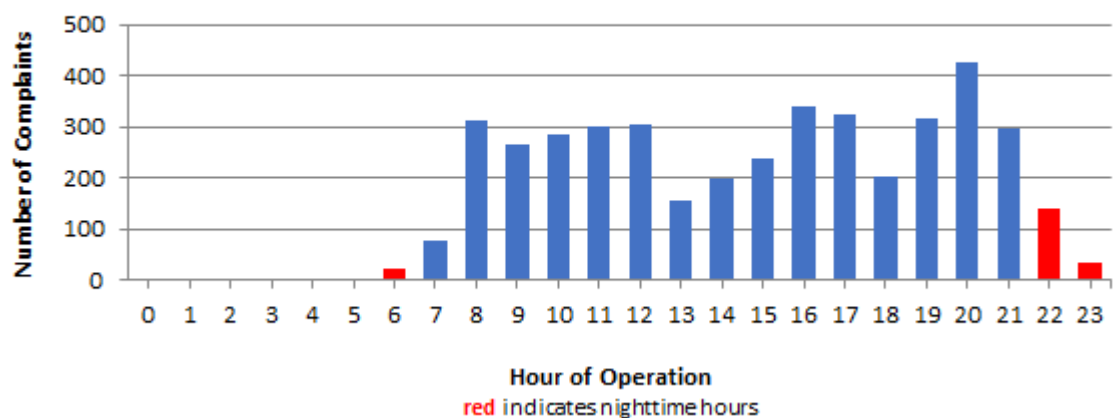
## Complaints by Concern



## Complaints by Zip Code

Zip Code	Complaints	Units
90278	163	2
90505	2	1
90713	1	1
90731	1	1
90740	17	1
90755	1	1
90803	1	1
90805	18	2
90807	14	5
90808	1	1
90814	1	1
92612	36	1
92626	515	1
92647	834	4
92648	2,505	18
92649	127	4
92651	2	1
92660	2	1
92676	3	1
92677	2	1
Not Reported	4	4
<b>Grand Total</b>	<b>4,250</b>	<b>53</b>

## Complaints by Time of Operation





# long beach airport



## Long Beach Airport

4100 E. Donald Douglas Drive, Long Beach, CA 90808

[www.lgb.org](http://www.lgb.org) • [lgbapt@longbeach.gov](mailto:lgbapt@longbeach.gov)

Administration • (562) 570-2619