

PREVIEW

2019

Long Beach Latino Economic Report

Presented by:

Juan Benitez, Ph.D., *CSULB & LBUSD*
Jessica Quintana, *Centro CHA*

Megan Anaya, *CSULB & Centro*
Seiji Steimetz, Ph.D., *CSULB*



CITY OF
LONG BEACH

Collaboration



- Centro CHA
 - **Jessica Quintana**, *Executive Director, Centro CHA*
 - **Megan Anaya**, *Research Analyst & Intern, Centro CHA & CSULB*
- California State University, Long Beach
 - **Juan Benitez, Ph.D.**, *Executive Director, CSULB Center for Community Engagement; LBUSD Board Member, District 3*
 - **Seiji Steimetz, Ph.D.**, *Professor & Chair of Economics, CSULB*
- City of Long Beach Economic Development Leaders
 - **Randal Hernandez**, *Chair, Long Beach Economic Development Commission*
 - **Sergio Ramirez**, *Deputy Director, Long Beach Economic Development Department*



Goals and Objectives



- To better understand and address key economic, education and health data for Latinos in Long Beach.
- Help advance CSULB's vision around the "*public good*" through community engagement efforts and campus-community partnerships.
 - Objectives:
 - Share in community settings;
 - Spark further discussion around key policy considerations and implications;
 - Serve as a mechanism for updates, on-going work, further development and dissemination;
 - Help to inform future research and decision-making in these areas.

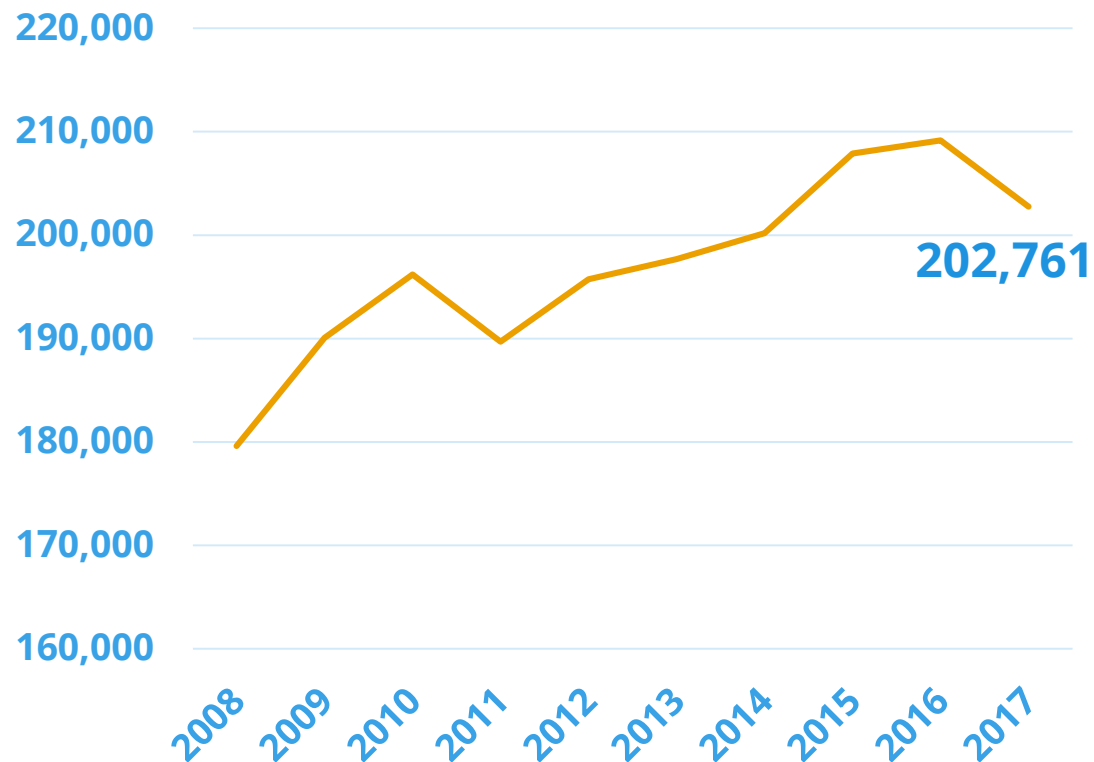


Population, Education, & Health



Population

Long Beach Latino Population



- About **203,000** Latinos live in Long Beach.
- Latino's represent **43.2%** of the city's population
- **79.3%** are of Mexican heritage
- **13.2%** are of Central American or South American heritage

Source: 2017 U.S. Census American Community Survey

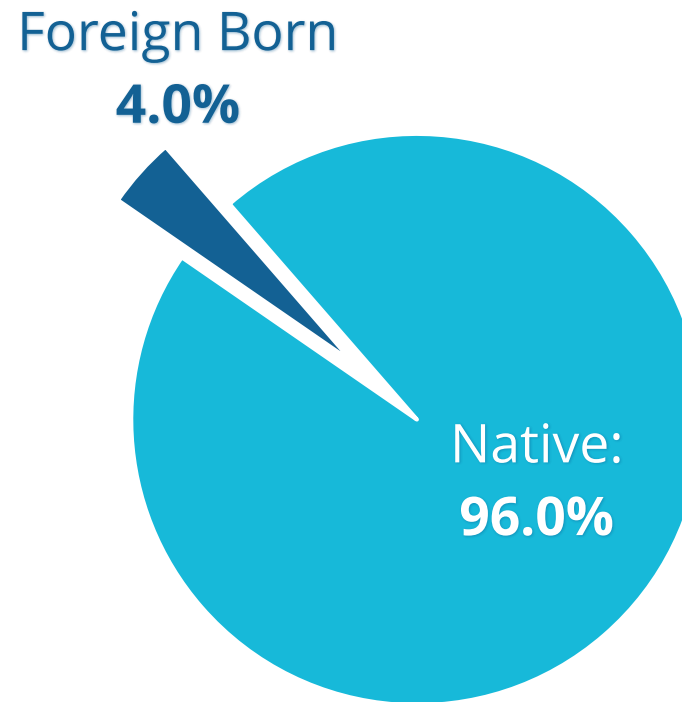




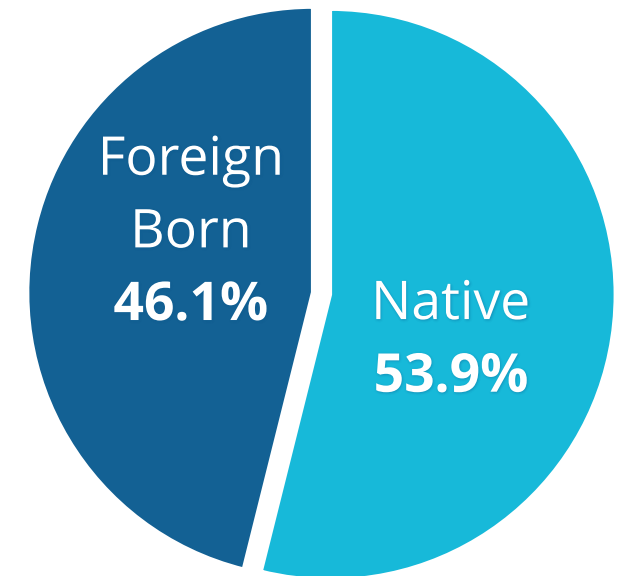
Population

- **33.4%** of Long Beach Latinos are immigrants
- Only **4%** of all Long Beach Latinos under 18 are immigrants
 - Only 2,465 immigrant Latino children in LB
- **42.5%** of LB Latino immigrants are naturalized citizens

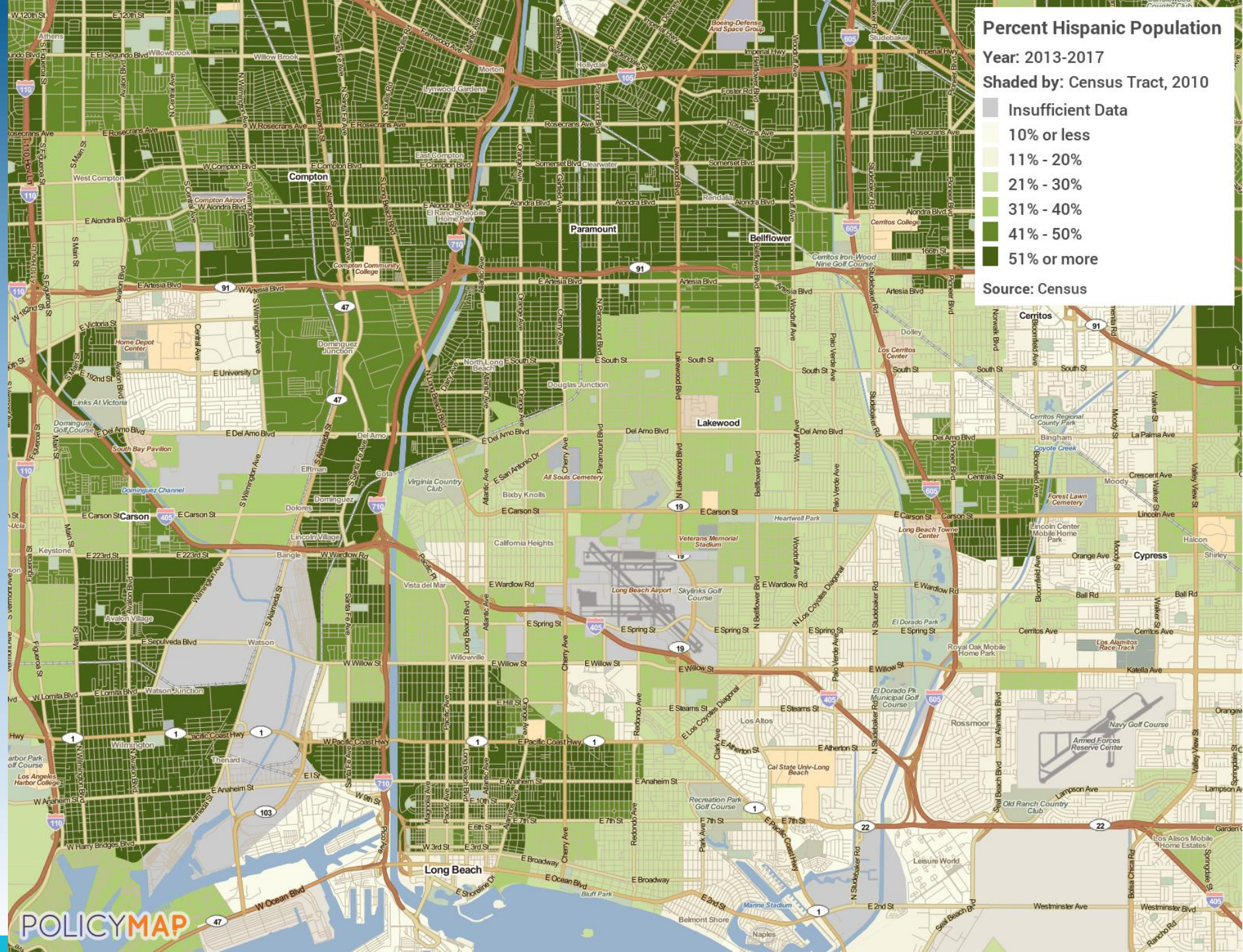
Long Beach Latinos
Under 18



Long Beach Latinos
18 and older



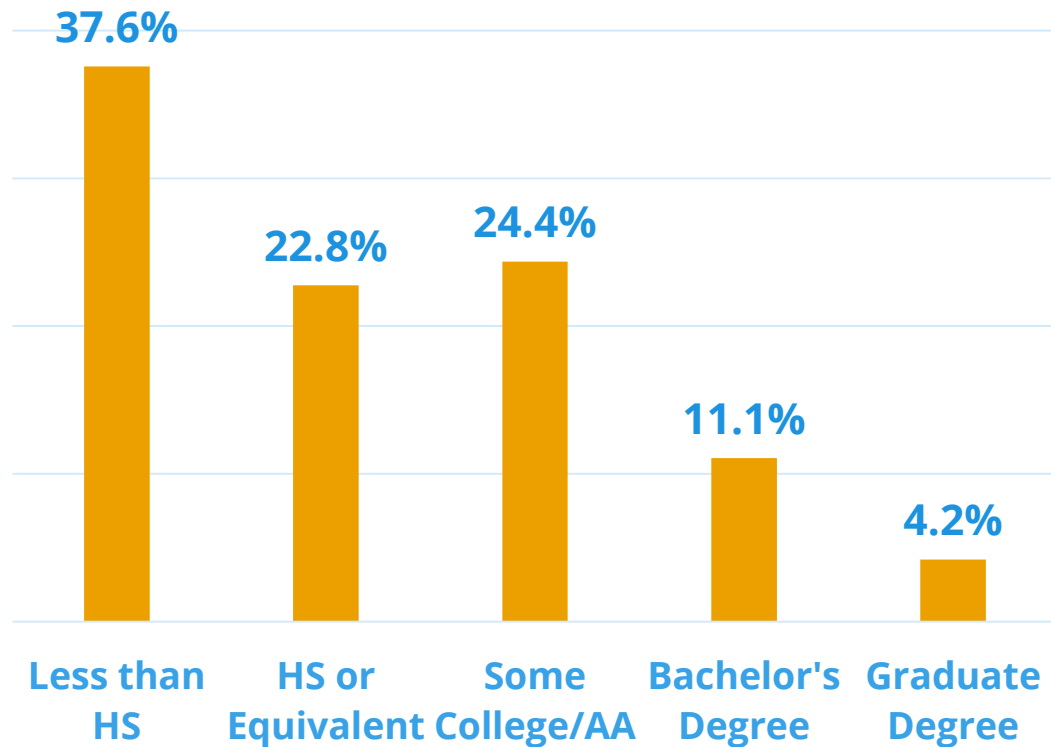
Percent Latino Population





Education

Educational Attainment (Age 25+)



- **37.6%** of Long Beach Latinos age 25 and older have less than a high-school education
 - Compared to **10%** among all other residents in that age group
- **15.3%** have earned a bachelor's degree or higher.

Source: 2017 U.S. Census American Community Survey

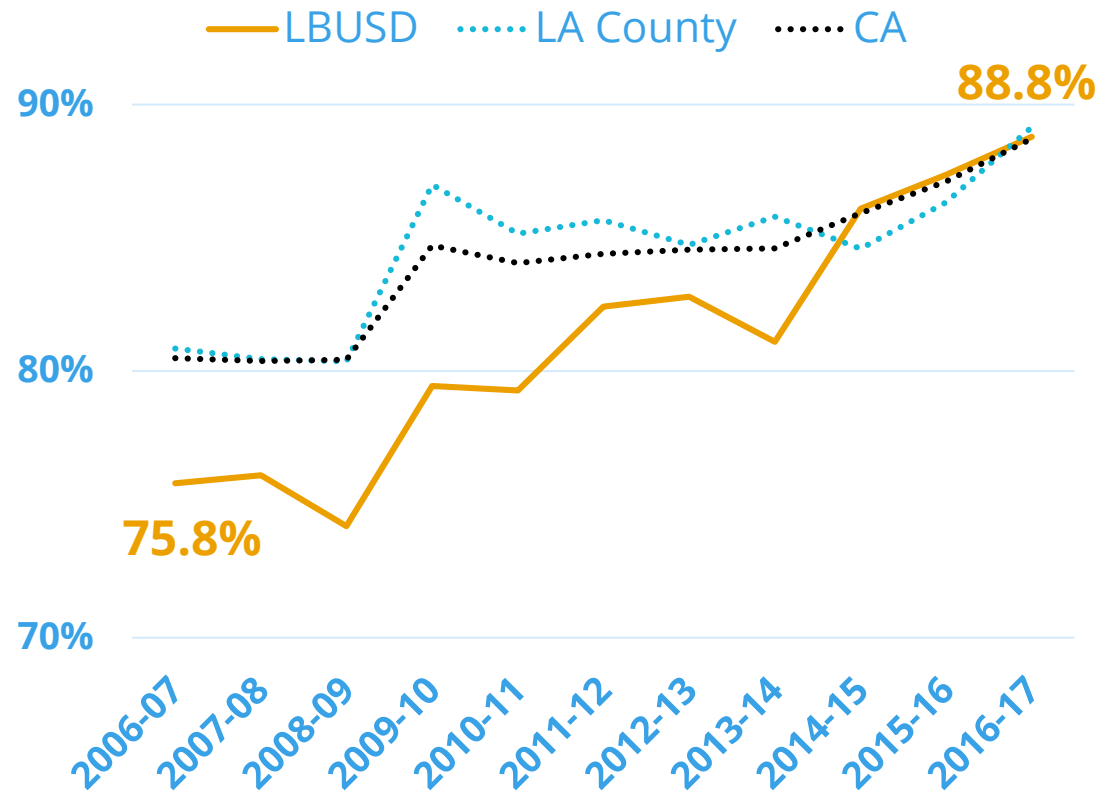




Education

- LBUSD has achieved an **88.8%** high-school graduation rate
 - The district has closed a persistent achievement gap with county and state graduation rates
- Over **43,000** students are enrolled in LBUSD schools
 - 69% of them are considered to be “socioeconomically disadvantaged”

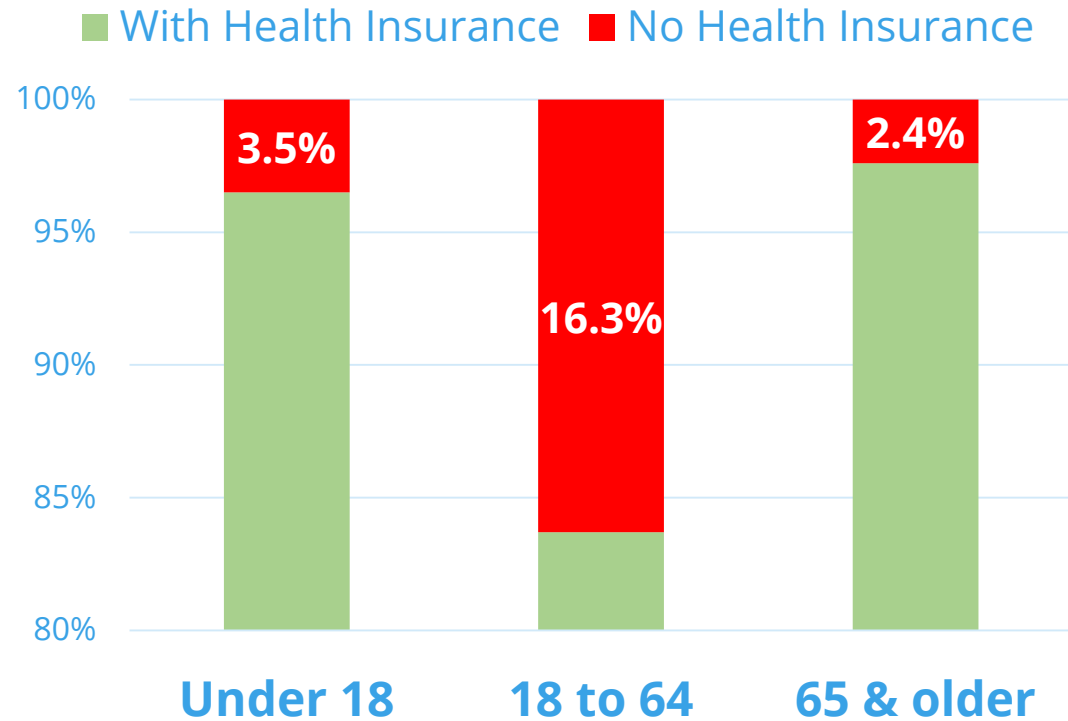
High School Graduation Rates





Health Insurance

LB Latino Health Insurance Coverage



- **23,289** Long Beach Latinos do not have health insurance
- **2,276** Long Beach Latino **children** do not have health insurance

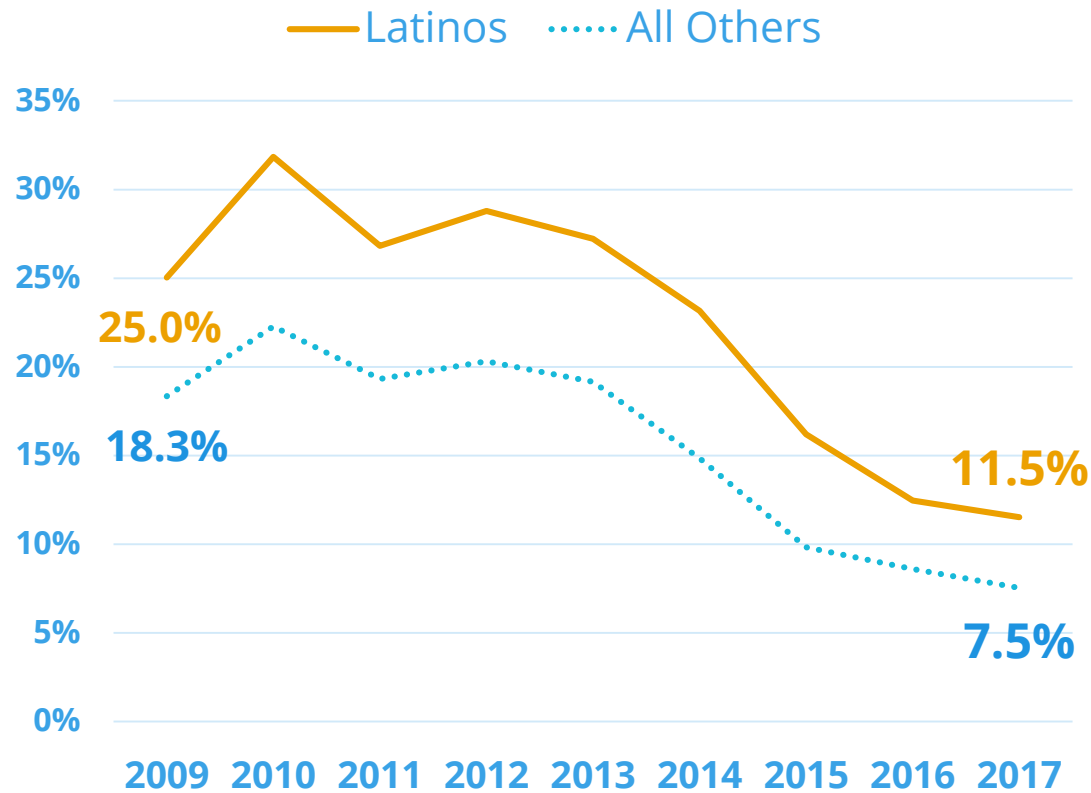
Source: 2017 U.S. Census American Community Survey





Health Insurance

Long Beach Percent Uninsured



- The percentage of uninsured Long Beach Latinos has declined by more than **13.5** percentage-points within the last decade
- The Latino insurance-coverage gap has been reduced

Source: 2017 U.S. Census American Community Survey



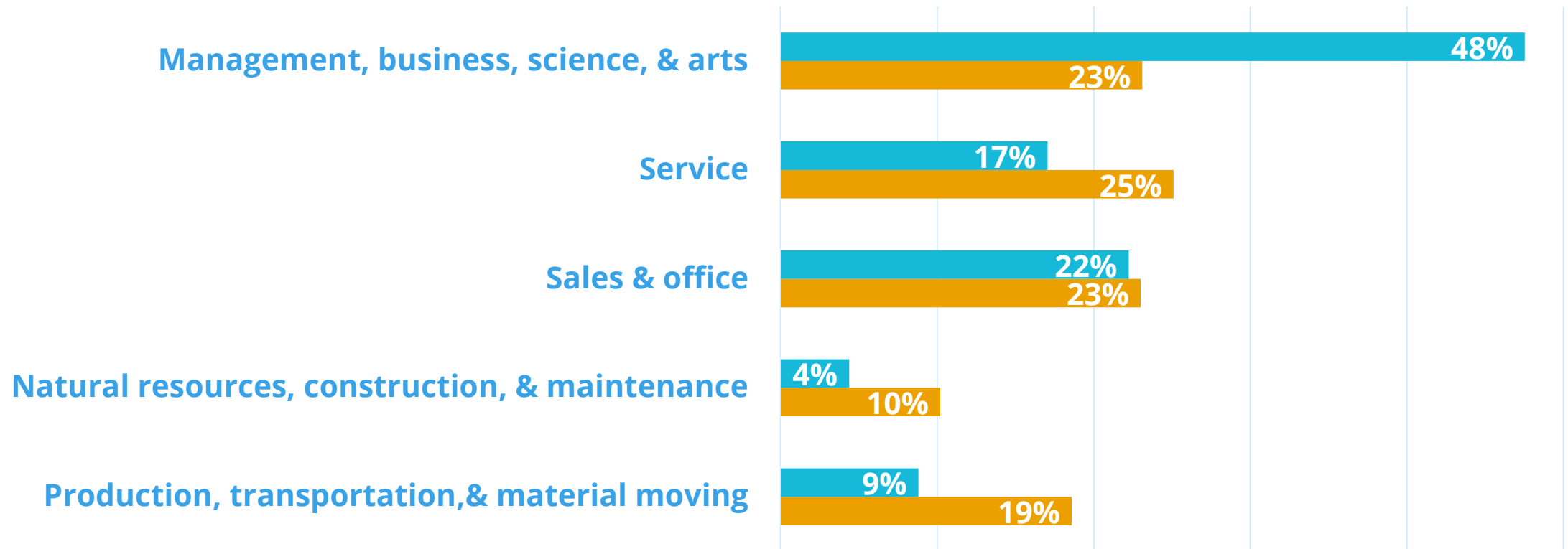
Economic Profile



Occupations

Long Beach Occupations by Major Sector

■ All Others ■ Latinos



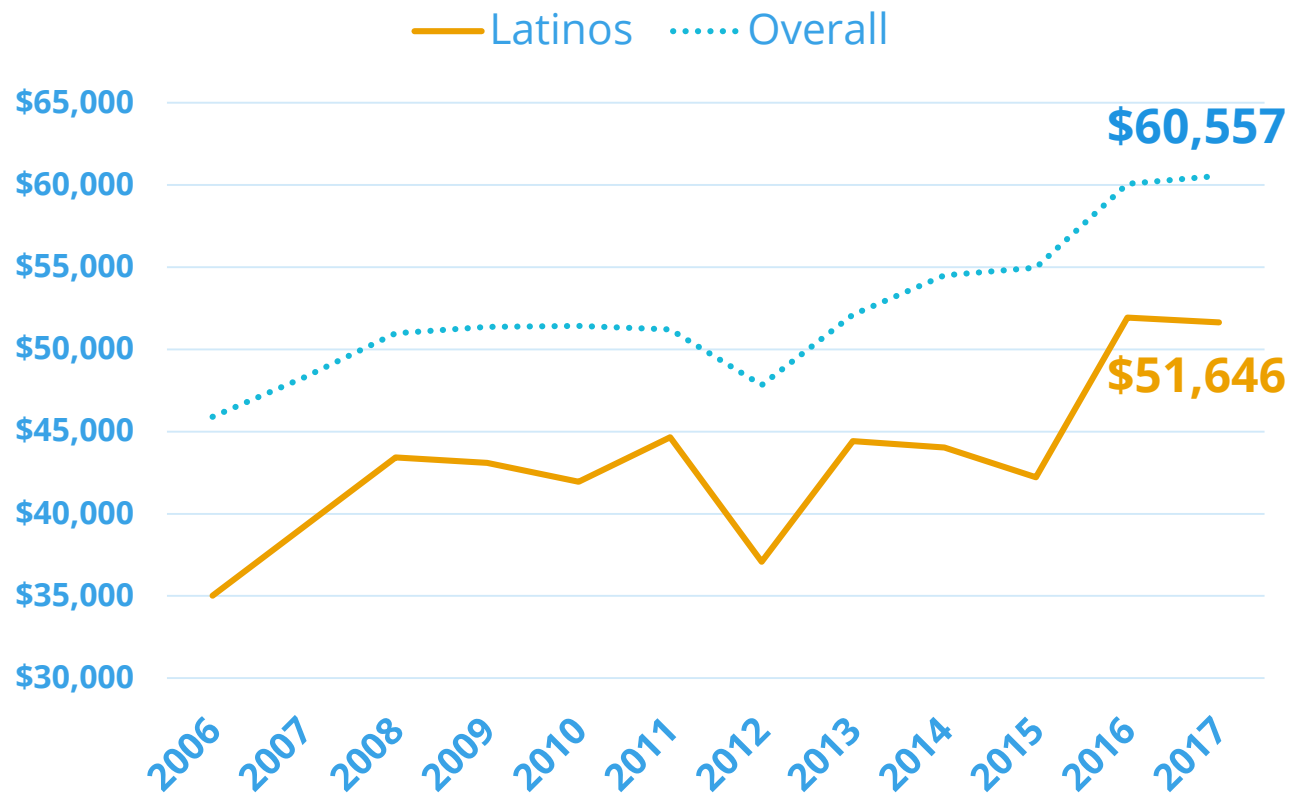
Source: 2017 U.S. Census American Community Survey





Household Income

Long Beach Median Household Income

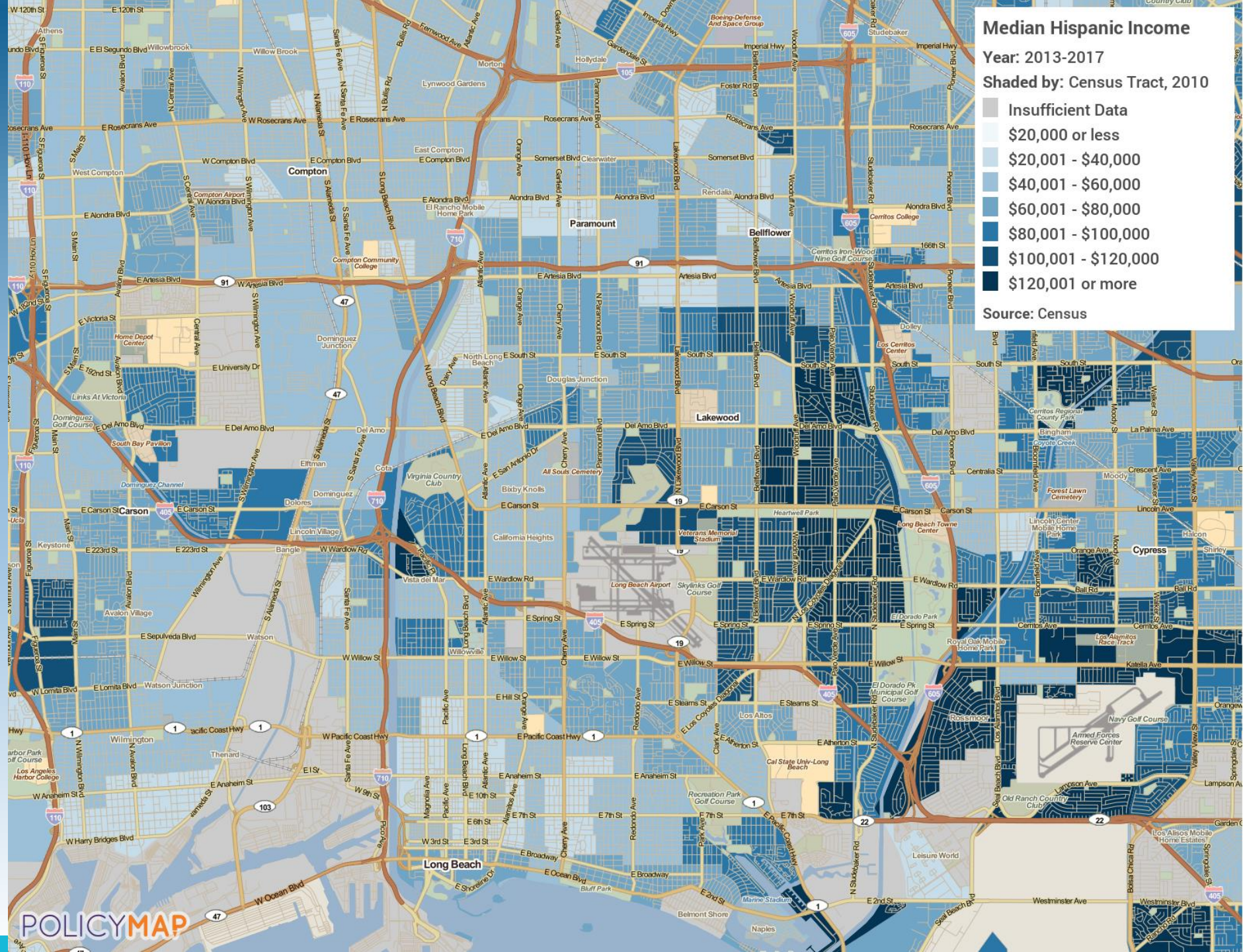


- Long Beach Latino median household income is **14.7%** lower than the overall median
- Labor force participation among Long Beach Latinos is **70%**
- Compared to the overall participation rate of 66%

Source: 2017 U.S. Census American Community Survey



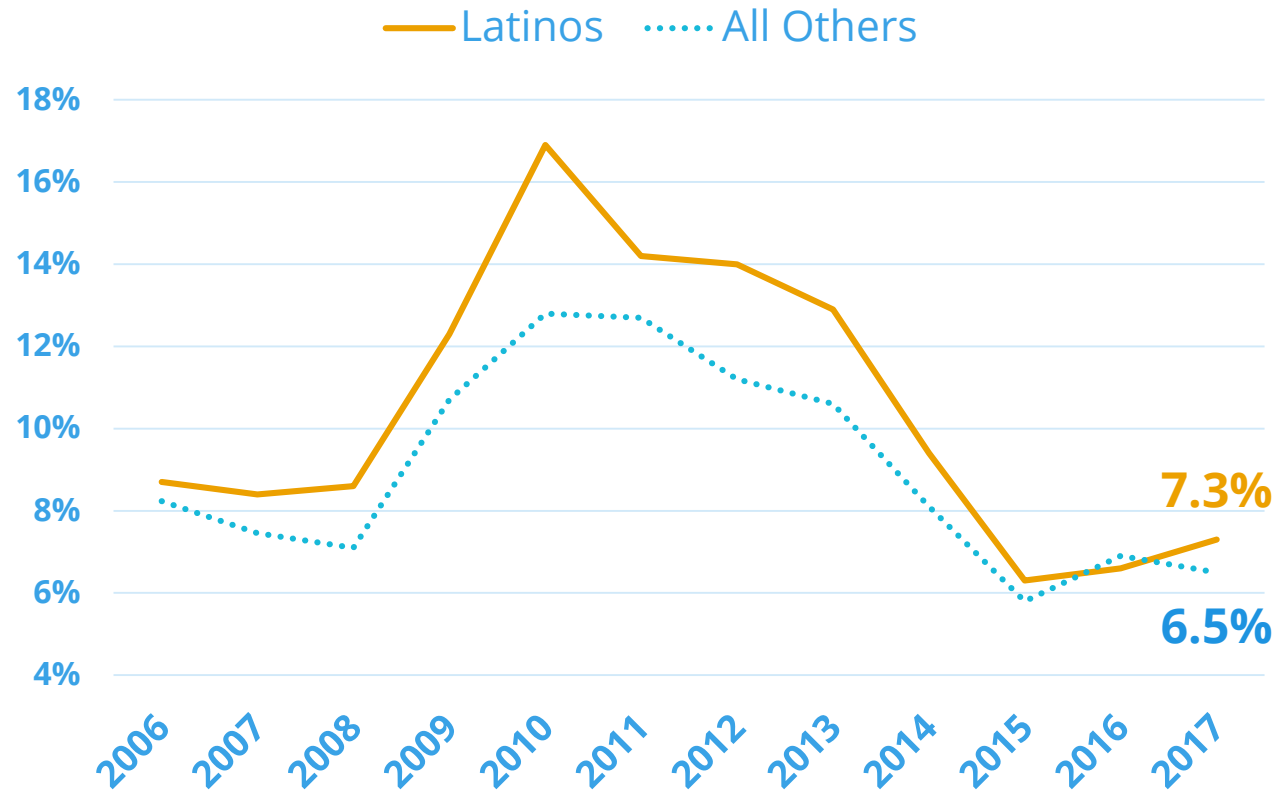
Median Household Income





Unemployment

Long Beach Unemployment Rates



- During difficult economic periods, unemployment among Long Beach Latinos is greater than it is among all other Long Beach residents

Source: 2017 U.S. Census American Community Survey

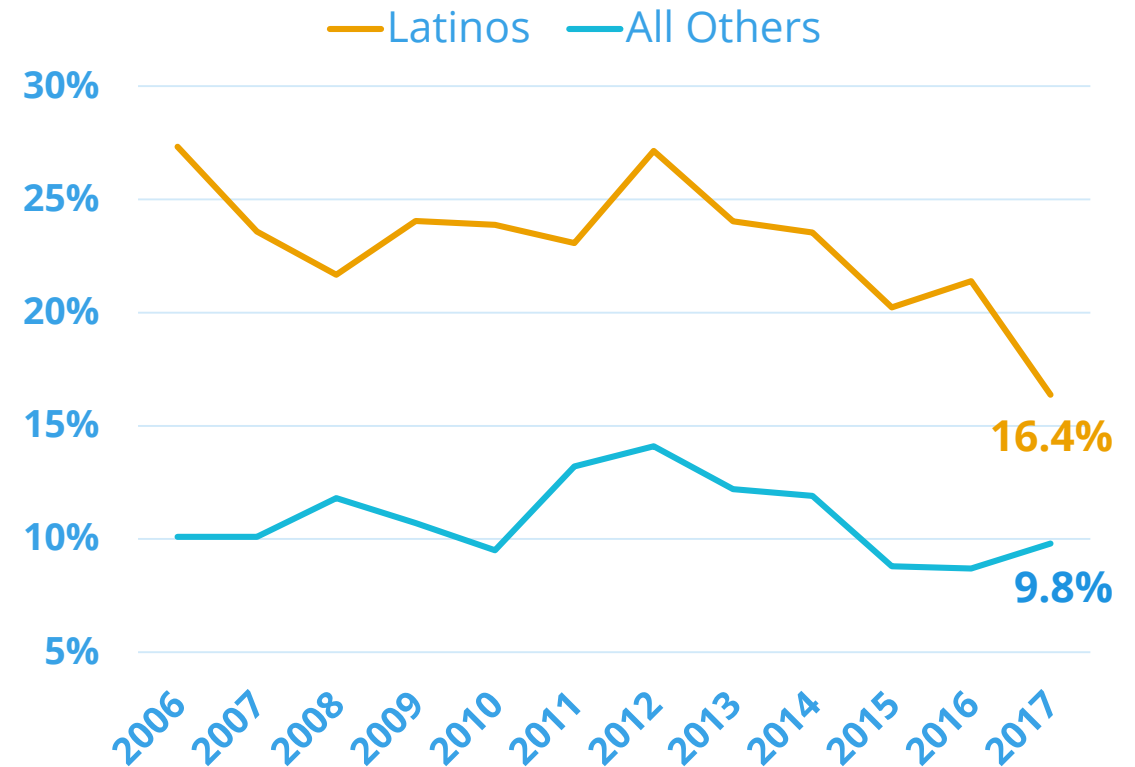


Poverty



- **16.4%** of Long Beach Latino families live in poverty
 - By comparison, **9.8%** of all other Long Beach Families live in poverty

Long Beach Family Poverty Rates

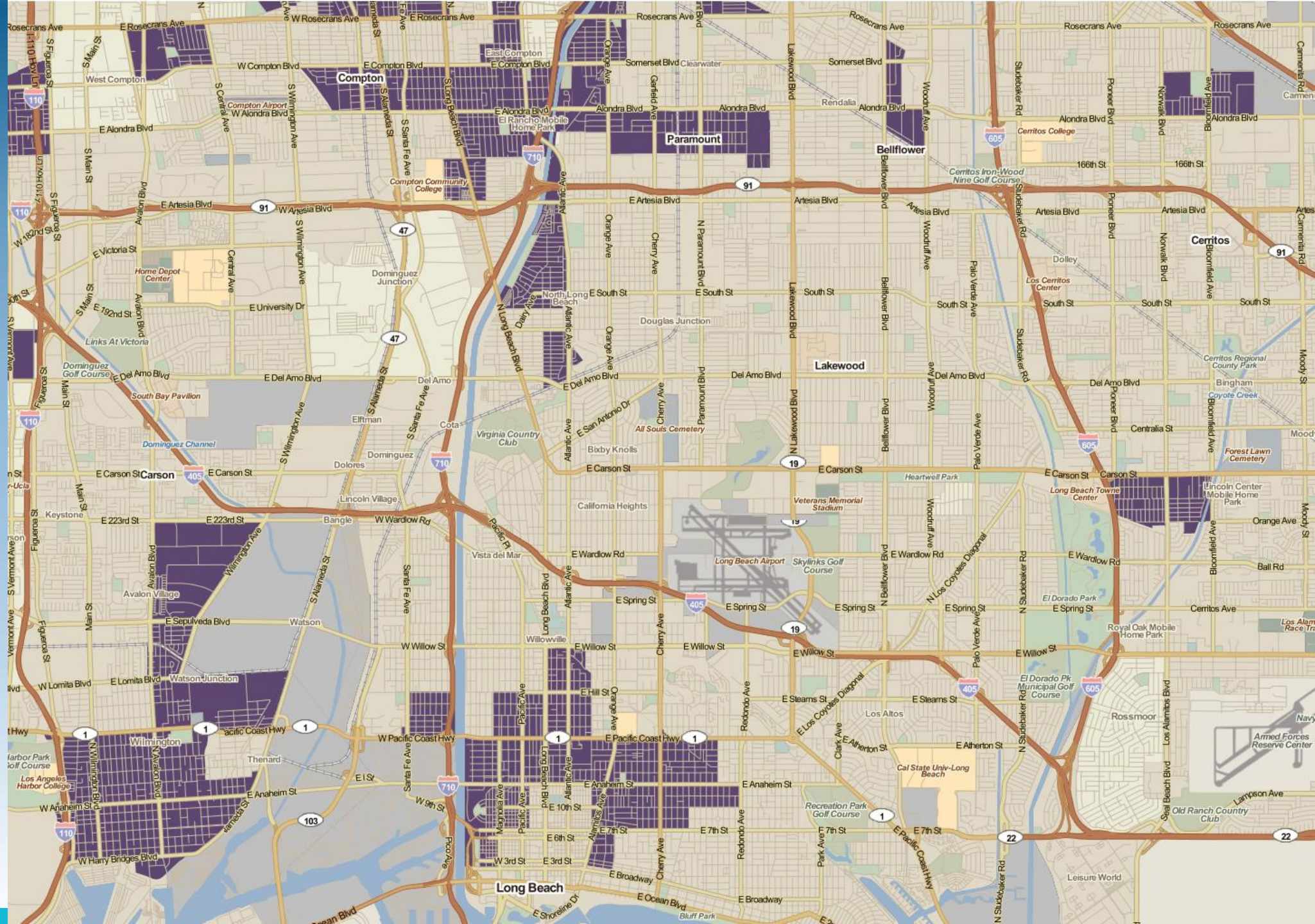


Source: 2017 U.S. Census American Community Survey



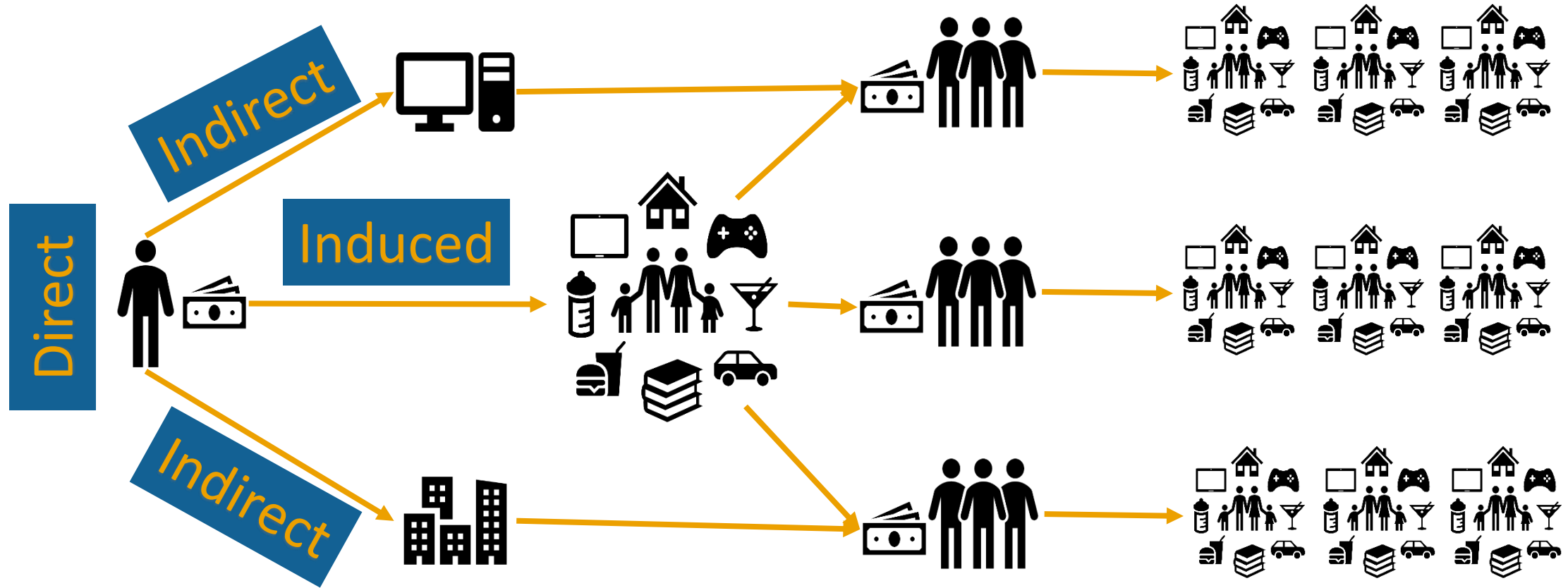
Families in Poverty

- 50% + Latino
- 20% + poverty rate



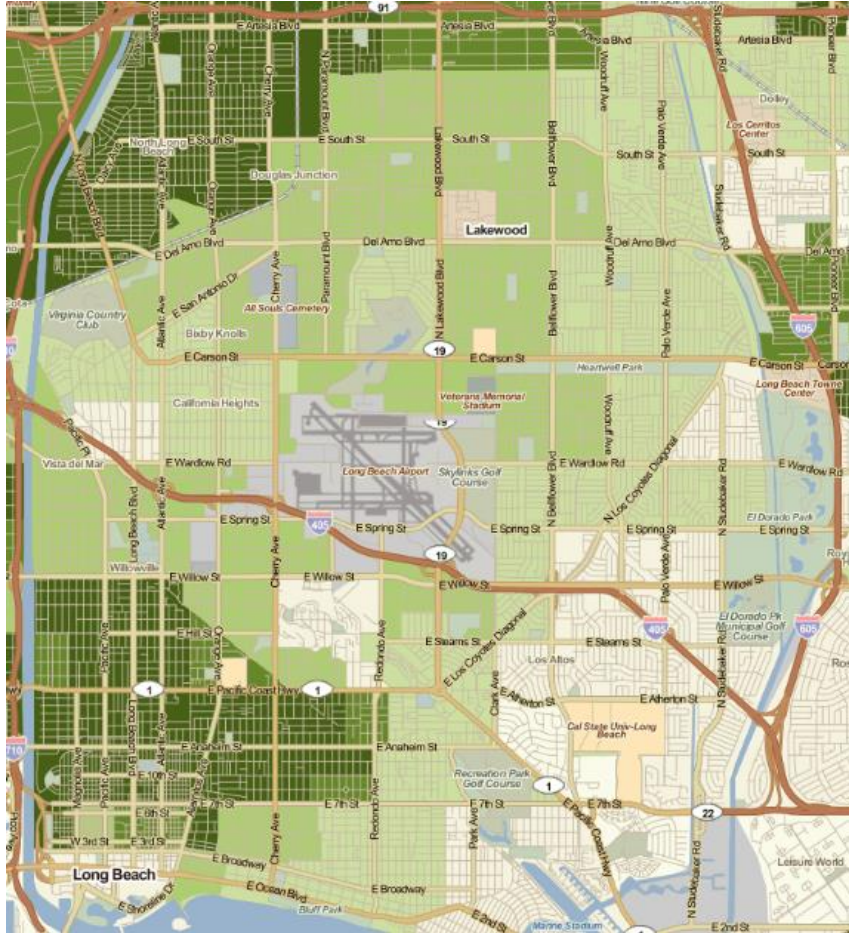
Economic Impact

What is Economic Impact Analysis?





Economic Impact



Long Beach Latinos

- Employment: 100,313
- Economic Impact: \$33.0 billion
- 40.3% of Long Beach's total impact
- Jobs Supported: 79,590

Source: IMPLAN 2016 Model Year





Economic Impact



Long Beach Latino Immigrants

- Employment: 52,091
- **Economic Impact: \$16.8 billion**
- 20.6% of Long Beach's total impact
- **Jobs Supported: 39,464**



Economic Impact

Self-Employed Long Beach Latinos

- Self Employed: 9,150
- **Economic Impact: \$2.0 billion**
 - 2.4% of Long Beach's total impact
- **Jobs Supported: 5,400**

Self-Employed Long Beach Latino Immigrants

- Self Employed: 6,852
- **Economic Impact: \$1.2 billion**
 - 1.5% of Long Beach's total impact
- **Jobs Supported: 3,147**



What the Community is Saying...



- Summarized stakeholder input from a “Policy Roundtable” and “Latino Economic Summit” in Fall 2018
- Propose next steps:
 - Present in additional community settings and produce on-going updates;
 - Include more comparative data (e.g. different populations groups AND other cities);
 - Leverage support, funding, partnerships (private and public) to continue this work;
 - Explore alignment with local, regional, and state efforts-strategies-initiatives;
 - Identify targeted, action oriented strategies, policies and programs to address Latino conditions and issues in Long beach;
 - Develop policy frameworks to better understand the data and make recommendations.



What the Community is Saying...



- Emerging Policy Areas and Recommendations:
 - Economic Inclusion
 - Closing Opportunity Gaps in Education
 - Eliminating Health Disparities
 - Immigrant Integration



Policy Area Considerations



- *Implementing Economic Inclusion*
 - Policy framings addressing Latino Poverty and Prosperity in Long Beach
- *Closing Opportunity, Equity, and Achievement Gaps in Education*
 - Policy framings addressing Latino educational outcomes in Long Beach



Policy Area Considerations



- *Eliminating Health Disparities*
 - Policy framings addressing Latino health inequities in Long Beach
- *Immigrant Integration*
 - Policy framings protecting the rights of and increasing support for Latino immigrant populations in Long Beach



PREVIEW

2019

Long Beach Latino Economic Report

Presented by:

Juan Benitez, Ph.D., *CSULB & LBUSD*
Jessica Quintana, *Centro CHA*

Megan Anaya, *CSULB & Centro*
Seiji Steimetz, Ph.D., *CSULB*



CITY OF
LONG BEACH