

# MAC Report

## January 2019



SUBMITTED BY THE MARINE BUREAU



## TABLE OF CONTENTS

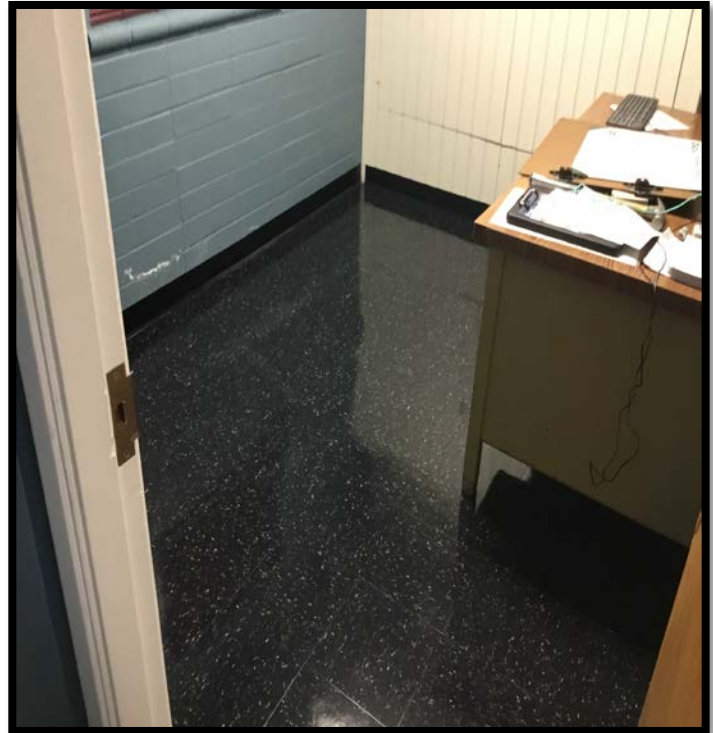
1. Marinas and Waterways
2. Beaches and Waterways
3. Marine Maintenance Work Order Graphs
4. Pump Out Inspection Report
5. Tide Table



## MARINAS AND WATERWAYS

### Projects in the works

- ❖ Staff is in the process of replacing all the damaged and missing signs throughout the Long Beach Shoreline Marina. Staff has already replaced all the “Gangway” and “No Visitor” signs. 90% completed.
- ❖ Staff is in the process of obtaining the calculations and engineering plans to retrofit the existing twelve (12) booster pumps from a wet system to a dry fire suppression system in the Long Beach Shoreline Marina.
- ❖ Staff is in the process of making improvements to the Alamitos Bay Marina office including: painting the interior of the building. 50% completed.
- ❖ Staff is in the process of inspecting and tightening all the loose fingers throughout the Long Beach Shoreline Marina. 40% completed.
- ❖ Staff is in the process of replacing and adding hand dryers to all the restrooms throughout the Long Beach Shoreline Marina. 95% completed.
- ❖ Staff is in the process of replacing all the interior doors at the Alamitos Bay Marina office.
- ❖ Staff is in the process of replacing the “Boat Owner’s Restricted” and the “Stop” signs in the Alamitos Bay Marina. 90% and 90% completed.
- ❖ Staff is in the process of inspecting and replacing all the damaged gangway water supply lines throughout the Long Beach Shoreline Marina, as needed. 45% completed.
- ❖ Staff is in the process of repairing the restroom plumbing throughout the Long Beach Shoreline Marina. 35% completed.
- ❖ Staff is in the process of repairing the concrete fingers throughout the Long Beach Shoreline Marina. 10% complete.
- ❖ Staff is in the process of refurbishing the rowing center dock at the Marine Stadium entrance. 50% completed.



## MARINAS AND WATERWAYS

- ❖ Staff is in the process of painting the interior restrooms along the beaches, Bayshore 1 & 2, and Mother's beach. 75% completed.
- ❖ Staff is in the process of repairing all the damaged concrete behind Spinnaker Bay near the seawall.
- ❖ Staff is in the process of removing, disassembling, and hauling all the Christmas trees.





## BEACHES AND WATERWAYS

### Accomplishments

- ❖ Beach Maintenance staff removed over 230 tons of trash and debris from the beaches and inner bays.
- ❖ Beach Maintenance staff serviced over 300 trash receptacles during the month of January.
- ❖ Beach Maintenance staff built up and maintained the berm on the East Peninsula beach front, depositing over 9,065 tons of sand for the month of January.
- ❖ Beach Maintenance staff built up and maintained the berm around the Lifeguard Headquarters, depositing over 2,485 tons of sand.
- ❖ Beach Maintenance staff swept the bike/pedestrian path.
- ❖ Queensway Bay staff conducted a cleaning of all 60 basket filters in the Rainbow Lagoon; six days per week, twice per day. Staff replaces and cleans all 60 baskets once a month.
- ❖ Queensway Bay staff conducted daily removal of water borne debris and algae in the Rainbow Lagoon, Rainbow Harbor Marina and Long Beach Shoreline Marina using hand nets and a small skimmer boat.
- ❖ Queensway Bay staff mowed and detailed the Rainbow Lagoon Island grass area.
- ❖ Queensway Bay staff removed trash from all the docks, three times per week.
- ❖ Queensway Bay staff conducted daily cleaning and maintenance of all trash skimmers on the docks, seven days per week.
- ❖ Queensway Bay staff upgraded the lighting of the 2<sup>nd</sup> floor Horn Blower to more energy efficient LED lights.
- ❖ Queensway Bay staff upgrading the lighting at Pier Point and Lighthouse public restroom entrance to more energy efficient LED lights.
- ❖ Queensway Bay staff worked with Public Works electrician to upgrade four (4) post top lights at South Shore Launch Ramp Park, to more energy efficient LED lights.
- ❖ Queensway Bay staff replaced two (2) LED color changing lights along Esplanade.
- ❖ Queensway Bay staff worked with Marine Maintenance staff to install new decking at fishing piers 1 & 2.



## BEACHES AND WATERWAYS

- ❖ Queensway Bay and Lifeguard staff operated the debris boom on a 24-hour shift rotation during the rain storms.
- ❖ Queensway Bay staff operated the trash skimming vessel to remove storm debris from the Long Beach Shoreline Marina, Rainbow Harbor and Los Angeles River.
- ❖ Queensway Bay staff responded to flooding at Shoreline Marina and pumped out water to clean the drain.
- ❖ Queensway Bay staff replaced the capture boom near the Rainbow Harbor entrance.
- ❖ Queensway Bay staff conducted daily graffiti removal of the entire Rainbow Harbor area, including the Queensway bridge bike path and the Pier Point parking lot.
- ❖ Queensway Bay staff completed and closed 29 "Go Long Beach Request for graffiti removal in the month of January.
- ❖ Queensway Bay staff re-painted the red curbs in the Pier Point parking lot.
- ❖ Queensway Bay staff repainted the interior office of the Marine Stadium building.
- ❖ Queensway Bay staff performed routine maintenance on the Wave and Dolphin Fountain 2-3 times per week.
- ❖ Queensway Bay staff replaced four (4) under water lights in the Dolphin Fountain.
- ❖ Queensway Bay staff conducted daily monitoring of the landscape crew.
- ❖ Queensway Bay staff responded to a few mainline breaks and coordinated repairs.
- ❖ Queensway Bay staff coordinated the planting of new flowers at the Dolphin Fountain and park signs.
- ❖ Queensway Bay staff monitored the tree trimming of all palm trees throughout the Rainbow Harbor Marina.
- ❖ Queensway Bay staff assisted the contractor with the main line repair for the Rainbow Harbor irrigation.

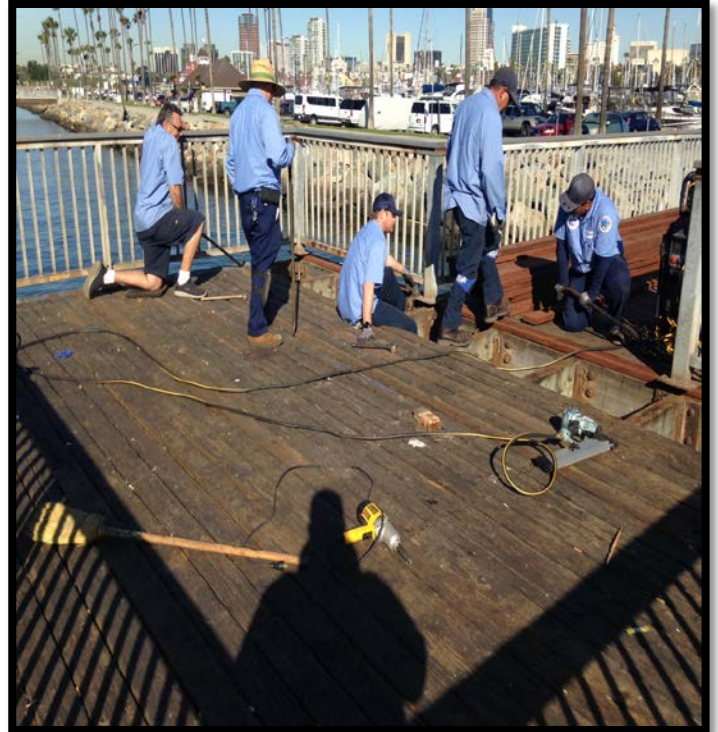




## BEACHES AND WATERWAYS

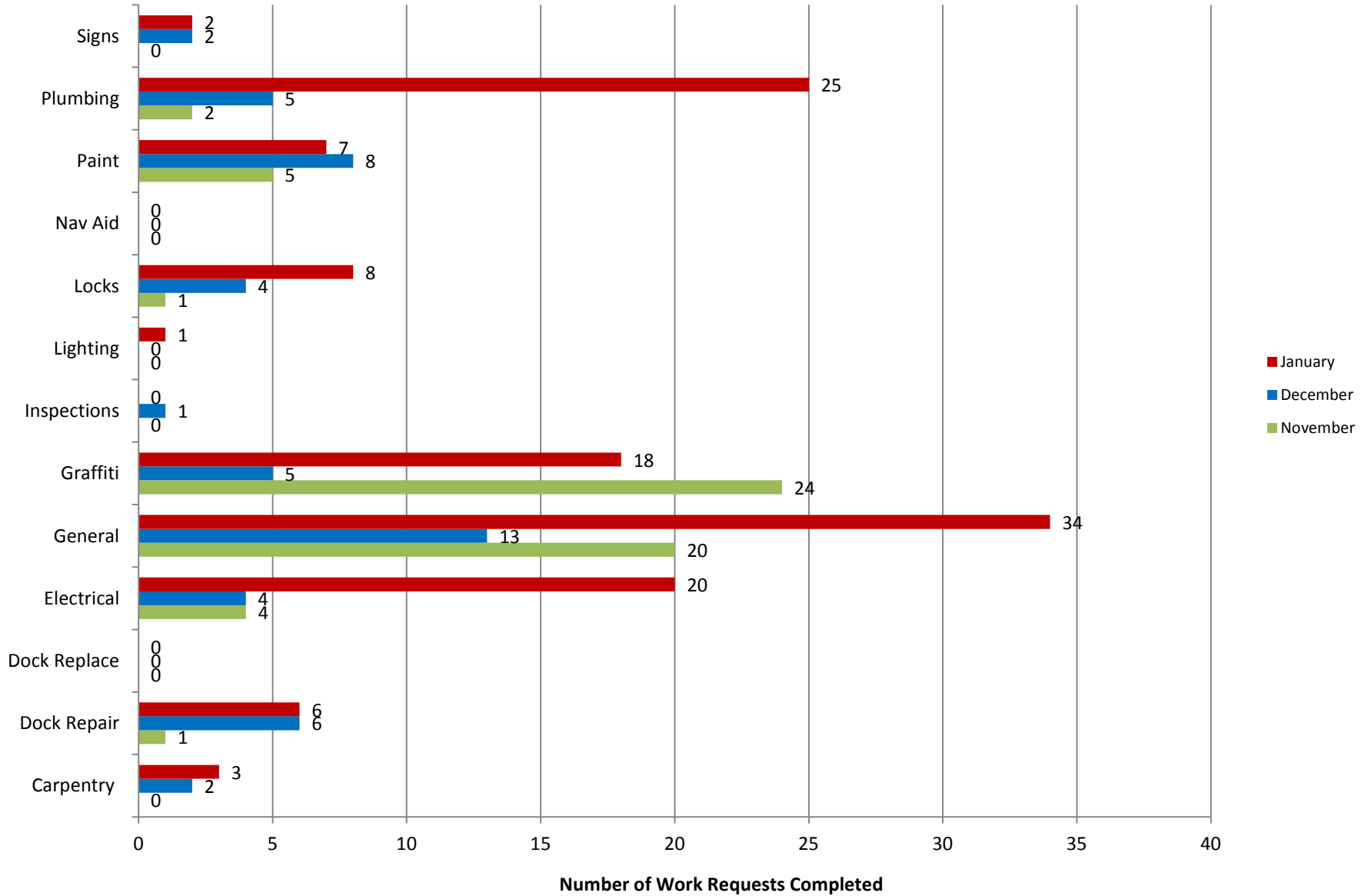
### Projects in the works

- ❖ Beach Maintenance staff is continuing the process of rebuilding sections of the peninsula where erosion occurs.
- ❖ Queensway Bay staff is in the process of upgrading the blue navigational lights throughout the Rainbow Harbor Marina to more energy efficient LED lights. 75% complete.
- ❖ Queensway Bay staff is in the process of replacing the light fixtures at the Navy Memorial.
- ❖ Queensway Bay staff is in the process of LED retrofitting 40 bollard lights throughout at the South Shore walkway.



# Marine Maintenance

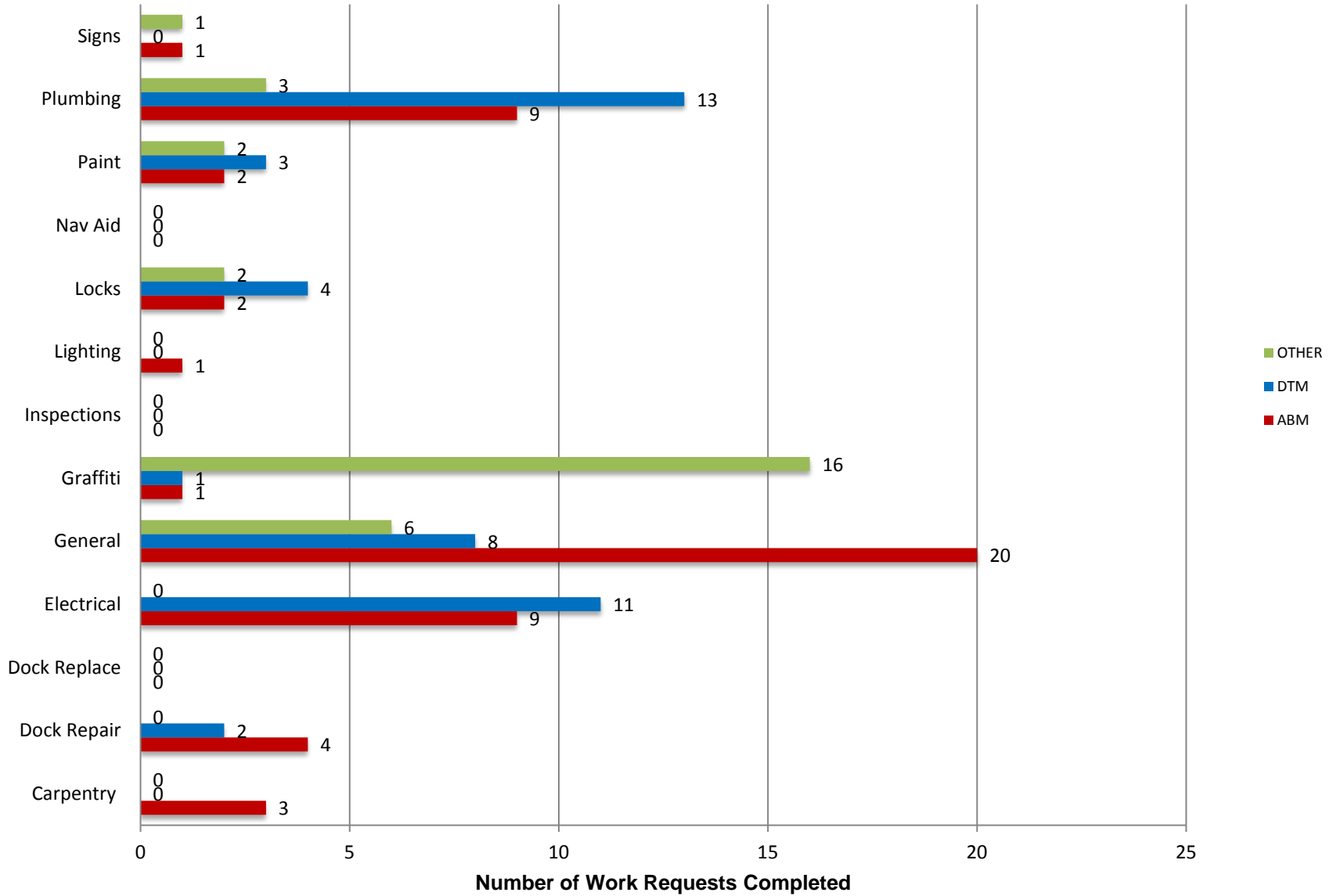
## Work Request Completed by Month





# Marine Maintenance

## Work Requests Completed by Location



## PUMPOUT INSPECTION REPORT

Pump Out Location	Inspection Date				
	1/04/19	1/10/19	1/17/19	1/23/19	1/31/19
Gwy A, A	W	W	W	W	W
Gwy A, B	NW	W	W	W	W
Parker's Public Dock, A	W	W	W	W	W
Parker's Public Dock, B	W	W	W	W	W
Parker's Public Dock, C	W	W	W	W	W
Dock 9	NW	W	W	W	W
Basin 6 South	W	W	W	W	W
Davie's Launch Ramp, A	W	W	W	W	W
Station 31, A	W	W	W	W	W
Station 31, B	W	W	W	W	W
Station 21	W	W	W	W	W
Basin 1, Gwy 2	W	W	W	W	W
Basin 1, Gwy 4	W	W	W	W	W
Basin 2, Gwy 8	W	W	W	W	W
Basin 2, Gwy 11	W	W	W	W	W
Basin 3, Gwy 16	W	W	W	W	W
Basin 3, Gwy 19	W	NW	W	W	W
Basin 4, Gwy 28	W	W	W	W	W
Basin 4, Gwy 31	W	W	W	W	W
Basin 5, Gwy 33	W	W	W	W	W
Basin 5, Gwy 34	W	W	W	W	W

KEY
W = Working
NW = Not Working
N/A = Not Applicable

