

Airport Advisory Commission

Wayne Chaney Sr.
Chair

Jeffrey Anderson
Vice Chair

Alvaro Castillo

Rita Nayak

Phil Ramsdale

Geetanjali Reuben

Jeff Rowe

Roland B. Scott, Jr.

Mary Sophiea

Airport Management

Jess L. Romo, A.A.E.
Airport Director

Juan López-Rios
Deputy Airport Director

Ken Mason
Executive Assistant

Claudia Lewis
Manager of Administration
& Finance

Ron Reeves
Airport Operations Manager

Ambi Thurai
Engineering Officer

Dale Worsham
Administrative Officer

Karl Zittel
Airside Operations Officer

Stephanie Montuya-Morisky
Public Affairs Officer

Matthew Brookes
Airport Properties Officer

Scott Garrett
Facilities Management Officer

Mony Chhey
Financial Services Officer

Ryan McMullan
Noise & Environmental Affairs
Officer



Long Beach Airport Monthly Noise Report September 2018

COMMERCIAL AIRCRAFT LATE NIGHT ACTIVITY
LGB Current Month & Calendar Year-To-Date Statistics (10 PM- 7AM)
September 2018

September				CY-T-D 2018		
10PM - 11PM Activity	2018	2017	Change	2018	2017	Change
Air Carrier & Commuter Operations	2,579	2,983	-13.5%	27,058	26,793	1.0%
American/Mesa/SkyWest Airlines	0	3	-300.0%	29	16	81.3%
Delta/SkyWest Airlines	2	2	0.0%	17	24	-29.2%
FedEx	0	0		0	0	
Hawaiian Airlines	1	0	100.0%	1	0	100.0%
JetBlue Airways	10	33	-69.7%	279	366	-23.8%
Southwest Airlines	0	0		9	15	-40.0%
UPS	0	0		0	0	
Subtotal 10PM-11PM	13	38	-65.8%	335	421	-20.4%
11PM- 7AM Activity	2018	2017	Change	2018	2017	Change
American/Mesa/SkyWest Airlines	0	0		15	11	36.4%
Delta/SkyWest Airlines	0	0		5	6	-16.7%
FedEx	0	0		0	0	
Hawaiian Airlines	0	0		1	0	100.0%
JetBlue Airways	6	24	-75.0%	166	209	-20.6%
Southwest Airlines	0	0		0	5	-500.0%
UPS	0	0		0	0	
Subtotal 11PM-7AM	6	24	-75.0%	187	231	-19.0%
TOTAL	19	62	-69.4%	522	652	-19.9%

Notes:

0.7% (19 of 2,579) of total commercial operations occurred between 10pm - 7am.

0.6 flights - Nightly average for all late night (10:00 PM—7:00 AM) commercial flights, includes unanticipated delays.

0.2 flights - Nightly average for commercial flights after 11 PM.

Of the 19 Late-Night Operations, 42% were due to air traffic control conditions, 26% were due to mechanical issues, 11% were due to ferry flights, 5% were due to staffing-related issues, 5% were due to diversion, 5% occurred during the five-minute grace period and 5% were due to unknown reasons.

AIRPORT NOISE VIOLATIONS LGB Current Month & Calendar Year-To-Date Statistics September 2018						
September				CY-T-D 2018		
Air Carrier Noise Violations	2018	2017	Change	2018	2017	Change
American/Mesa Airlines	0	0		17	6	183.3%
Delta/SkyWest Airlines	0	0		5	4	25.0%
FedEx	0	0		0	0	
Hawaiian Airlines	1	0	100.0%	2	0	200.0%
JetBlue Airways	6	28	-78.6%	195	209	-6.7%
Southwest Airlines	0	0		0	3	-300.0%
UPS	0	0		0	0	
Subtotal	7	28	-75.0%	219	222	-1.4%
Commuter Noise Violations	2018	2017	Change	2018	2017	Change
American/SkyWest Airlines	0	0		0	0	
Delta/SkyWest Airlines	0	0		0	0	
Subtotal	0	0		0	0	
Non-Commercial Noise Violations	2018	2017	Change	2018	2017	Change
All GA, Charter & Other	14	8	75.0%	100	128	-21.9%
TOTAL	21	36	-41.7%	319	350	-8.9%
Monetary Fines	2018	2017		2018	2017	
Airport Surcharges	\$2,700	\$1,800		\$57,600	\$20,000	
Consent Decree	\$36,000	\$138,000		\$900,000	\$1,080,000	
TOTAL	\$38,700	\$139,800		\$957,600	\$1,100,000	

AIRPORT OPERATIONS LGB Current Month & Calendar Year-To-Date Statistics September 2018						
September				CY-T-D 2018		
Airport Operations (FAA)	2018	2017	Change	2018	2017	Change
Air Carrier + Commuter Carriers	2,579	2,983	-13.5%	27,058	26,793	1.0%
Air Taxi + General Aviation	17,858	24,603	-27.4%	175,681	212,078	-17.2%
Military Operations	78	92	-15.2%	1,126	1,042	8.1%
Total Aircraft Operations	20,515	27,678	-25.9%	203,865	239,913	-15.0%

Notes:

0.1% (21 of 20,515) of the Airport's total aircraft operations (Commercial & GA) resulted in an aircraft noise violation.
0.3% (7 of 2,579) of the Airport's Commercial operations (Commercial & Commuter) resulted in an aircraft noise violation.

AIRCRAFT NOISE VIOLATORS

September 2018

OWNERNAME	DATE	TIME	A/D	RWY	FLIGHT #	A/C TYPE	ORIG/DEST	SEL	LIMIT	STATUS
LFG Aviation 2 Inc Trustee	9/2/2018	2:47:33	A	30		GLF5		87.0	79.0	VIO
JetBlue Airways	9/2/2018	23:20:24	A	30	JBU679	A320	LAS	93.8	79.0	VIO + Alt Enf
JetBlue Airways	9/3/2018	2:03:52	A	30	JBU6279	A320	LAS	92.5	79.0	VIO + Alt Enf
FKM King Air LLC	9/4/2018	2:12:57	A	30		B350		89.3	79.0	VIO
JetBlue Airways	9/7/2018	23:08:17	D	26R	JBU6109	A320	SAN	98.3	n/a	VIO + Alt Enf
Hawaiian Airlines	9/8/2018	22:15:09	A	30	HAL64	A21N	LIH	92.8	90.0	VIO
NetJets Inc.	9/13/2018	23:49:46	A	30		C56X		92.5	79.0	VIO
JetBlue Airways	9/17/2018	23:13:23	A	30	JBU943	A320	FLL	93.0	79.0	VIO + Alt Enf
TFF Inc	9/18/2018	23:53:38	D	30		BE35		89.5	79.0	VIO
Kaiser Air, Inc.	9/20/2018	22:43:13	D	30		B735		93.1	90.0	VIO
Anglo-American Aviation Inc.	9/21/2018	0:36:51	D	30		C172		84.0	79.0	VIO
JetBlue Airways	9/21/2018	23:23:35	A	30	JBU405	A320	BOS	93.9	79.0	VIO + Alt Enf
JetBlue Airways	9/22/2018	2:05:21	A	30	JBU679	A320	LAS	94.2	79.0	VIO + Alt Enf
Paradigm Air Carriers Inc.	9/24/2018	23:03:17	D	30		B752		92.3	79.0	VIO
Private	9/25/2018	23:30:55	M	30		SR22		82.4	79.0	VIO
Northwestern Corp DBA	9/26/2018	5:40:22	D	12		C560		85.7	79.0	VIO
Cathexis Holdings LP	9/26/2018	23:13:27	A	30		F900		89.1	79.0	VIO
Dynamic Aircraft Consortium LLC	9/27/2018	1:16:25	A	30		SW3		83.6	79.0	VIO
MLW Aviation LLC	9/27/2018	2:21:46	A	30		B752		96.6	79.0	VIO
Marketstreet Aviation LLC	9/29/2018	2:53:43	D	30		CL35		86.3	79.0	VIO
American Aviation Academy Inc	9/30/2018	1:12:52	D	30		C172		84.9	79.0	VIO

DEFINITIONS:

A/C Type — Aircraft Type

A/D — Arrival / Departure

ALT ENF — Alternative Enforcement

M — Missed Approach

RWY — Runway

SEL — SENEL — Single Event Noise Exposure Level (dBA)

VIO — Violation

AIR CARRIER NOISE BUDGET PERFORMANCE October 2017 - September 2018			
RMT #	NOISE BUDGET	ACTUAL	PERCENT BUDGET USED
9	70.7	64.3	90.9%
10	84.6	84.3	99.6%

DEFINITIONS:

RMT — Remote Monitoring Terminal

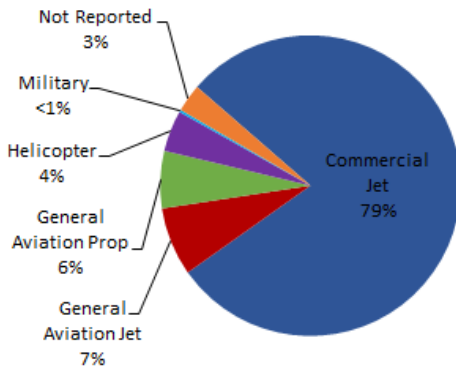
TOTAL NOISE BUDGET PERFORMANCE October 2017 - September 2018			
RMT #	NOISE BUDGET	ACTUAL	PERCENT BUDGET USED
9	102.7	74.9	72.9%
10	120.9	99.1	82.0%

Source: LGB staff calculations

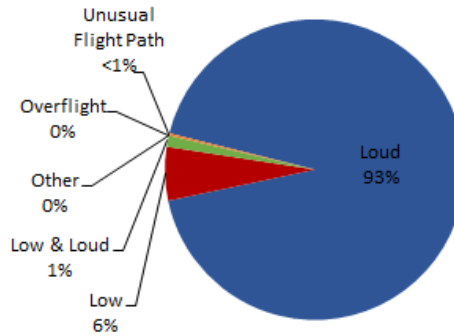
LGB AIRCRAFT NOISE COMPLAINTS

September 2018

Complaints by Aircraft Types



Complaints by Concern



Complaints by Zip Code¹

Zip Code	Complaints	Units
90277	2	2
90278	1	1
90501	1	1
90505	1	1
90713	6	2
90740	9	1
90805	8	2
90806	1	1
90807	49	20
90808	2	2
90815	5	2
92612	17	1
92626	448	2
92646	4	1
92647	1,047	8
92648	291	12
92649	516	13
92651	3	1
92660	2	1
Not Reported	3	3
Grand Total	2,416	77

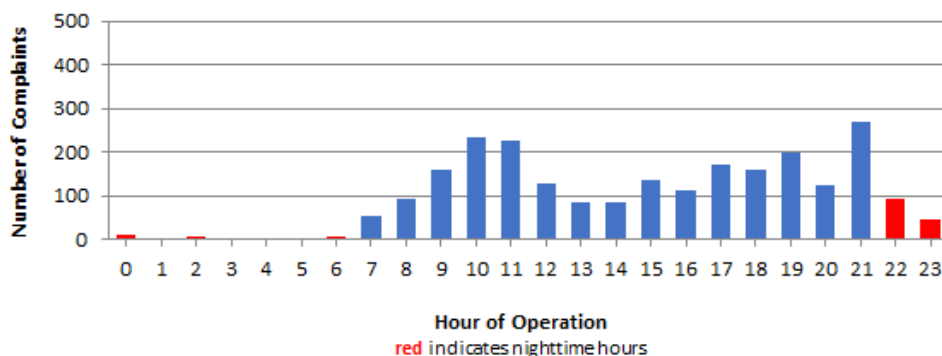
Long Beach Residents' Helicopter Complaints Submitted to FAA²

Zip Code	Individual Complaints	Number of Individuals	Anonymous Complaints	Total Complaints
90802	2	1	15	17
90803	151	9	52	203
90804	3	1	0	3
90808	0	n/a	6	6
90814	84	3	307	391
Grand Total	240	14	380	620

¹These data include data submitted directly to Long Beach Airport and does not include data submitted to FAA.

²These data reflect helicopter noise complaints submitted directly to FAA.

Complaints by Time of Operation



[THIS PAGE INTENTIONALLY LEFT BLANK]



long beach airport



Long Beach Airport

4100 E. Donald Douglas Drive, Long Beach, CA 90808

www.lgb.org • lgbapt@longbeach.gov

Administration • (562) 570-2619