

Airport Advisory Commission

Wayne Chaney Sr.
Chair

Jeffrey Anderson
Vice Chair

Alvaro Castillo

Hal Gosling

Phil Ramsdale

Jeff Rowe

Roland B. Scott, Jr.

Karen Sherman



Airport Management

Jess L. Romo, A.A.E.
Airport Director

Juan López-Rios
Deputy Airport Director

Ken Mason
Executive Assistant

Claudia Lewis
Manager of Administration
& Finance

Fred Pena
Airport Operations Manager

Ambi Thurai
Engineering Officer

Dale Worsham
Administrative Officer

Karl Zittel
Airside Operations Officer

Stephanie Montuya-Morisky
Public Affairs Officer

Steve Spurlock
Superintendent of Safety and
Security

Ron Reeves
Noise & Environmental Affairs
Officer



Long Beach Airport Monthly Noise Report December 2017

COMMERCIAL AIRCRAFT LATE NIGHT ACTIVITY
LGB Current Month & Calendar Year-To-Date Statistics (10 PM- 7AM)
December 2017

#				CY-T-D 2017		
December						
10PM - 11PM Activity	2017	2016	Change	2017	2016	Change
Air Carrier & Commuter Operations	3,123	2,659	17.5%	36,013	26,951	33.6%
American/Mesa/SkyWest Airlines	3	5	-40.0%	22	25	-12.0%
Delta/SkyWest Airlines	6	2	200.0%	31	21	47.6%
FedEx	0	0		0	0	
JetBlue Airways	19	33	-42.4%	429	251	70.9%
Southwest Airlines	0	4	-400.0%	17	7	142.9%
UPS	0	0		0	1	-100.0%
Subtotal 10PM-11PM	28	44	-36.4%	499	305	63.6%
11PM- 7AM Activity	2017	2016	Change	2017	2016	Change
American/Mesa/SkyWest Airlines	0	2	-200.0%	11	25	-56.0%
Delta/SkyWest Airlines	0	0		6	4	50.0%
FedEx	0	0		0	0	
JetBlue Airways	14	15	-6.7%	247	133	85.7%
Southwest Airlines	0	0		5	1	400.0%
UPS	0	0		0	0	
Subtotal 11PM-7AM	14	17	-17.6%	269	163	65.0%
TOTAL	42	61	-31.1%	768	468	64.1%

Notes:

1.3% (42 of 3,123) of total commercial operations occurred between 10pm - 7am.

1.4 flights - Nightly average for all late night (10:00 PM—7:00 AM) commercial flights, includes unanticipated delays.

0.5 flights - Nightly average for commercial flights after 11 PM.

Of the 42 Late-Night Operations, 48% were due to poor weather conditions, 19% were due to unknown reasons, 14% were due to maintenance issues, 7% occurred during the five-minute grace period, 5% were due to staffing-related issues, 2% were due to air traffic control-related issues, 2% were due to the operation of ferry flights and 2% were due to customer-related issues.

AIRPORT NOISE VIOLATIONS LGB Current Month & Calendar Year-To-Date Statistics December 2017						
December				CY-T-D 2017		
Air Carrier Noise Violations	2017	2016	Change	2017	2016	Change
American/Mesa Airlines	2	0	200.0%	9	4	125.0%
Delta/SkyWest Airlines	0	0		4	4	0.0%
FedEx	0	0		0	0	
JetBlue Airways	14	16	-12.5%	247	126	96.0%
Southwest Airlines	0	0		3	0	300.0%
UPS	0	0		0	1	-100.0%
Subtotal	16	16	0.0%	263	135	94.8%
Commuter Noise Violations	2017	2016	Change	2017	2016	Change
American/SkyWest Airlines	0	0		0	0	
Delta/SkyWest Airlines	0	0		0	1	-100.0%
Subtotal	0	0		0	1	-100.0%
Non-Commercial Noise Violations	2017	2016	Change	2017	2016	Change
All GA, Charter & Other	9	19	-52.6%	172	176	-2.3%
TOTAL	25	35	-28.6%	435	312	39.4%
Monetary Fines						
Airport Surcharges	\$1,400	\$1,500		\$24,500	\$18,600	
Consent Decree	\$78,000	\$90,000		\$1,284,000	\$600,000	
TOTAL	\$79,400	\$91,500		\$1,308,500	\$618,600	

AIRPORT OPERATIONS LGB Current Month & Calendar Year-To-Date Statistics December 2017						
December				CY-T-D 2017		
Airport Operations (FAA)	2017	2016	Change	2017	2016	Change
Air Carrier + Commuter Carriers	3,123	2,659	17.5%	36,013	26,951	33.6%
Air Taxi + General Aviation	22,759	18,683	21.8%	284,432	285,166	-0.3%
Military Operations	90	73	23.3%	1,352	1,304	3.7%
Total Aircraft Operations	25,972	21,415	21.3%	321,797	313,421	2.7%

Notes:

0.1% (25 of 25,972) of the Airport's total aircraft operations (Commercial & GA) resulted in an aircraft noise violation.
0.5% (16 of 3,123) of the Airport's Commercial operations (Commercial & Commuter) resulted in an aircraft noise violation.

AIRCRAFT NOISE VIOLATORS

December 2017

OWNERNAME	DATE	TIME	A/D	RWY	FLIGHT #	A/C TYPE	ORIG/DEST	SEL	LIMIT	STATUS
Emprise Air LLC	12/2/2017	23:39:03	D	30		DA40		81.1	79.0	VIO
JetBlue Airways	12/8/2017	1:16:15	A	30	JBU1417	A320	AUS	90.9	79.0	VIO + Alt Enf
JetBlue Airways	12/10/2017	0:41:06	A	30	JBU943	A320	FLL	91.0	79.0	VIO + Alt Enf
Swift Air LLC	12/11/2017	23:06:55	D	30		B734		91.8	79.0	VIO
Elite Aircraft LLC	12/14/2017	14:57:50	D	25R		C172		94.5	92.0	VIO
NPM Equipment	12/17/2017	0:08:39	A	30		CL30		91.4	79.0	VIO
American Airlines	12/18/2017	22:19:43	A	30	ASH5965	CRJ9	PHX	92.9	90.0	VIO
Island Express	12/18/2017	23:10:26	A	30		S-76		86.0	79.0	VIO
Private	12/20/2017	14:00:40	D	30		TBM3		106.0	102.5	VIO
Private	12/21/2017	12:13:29	D	25R		C210		95.3	92.0	VIO
Mammoth Beach LLC	12/22/2017	18:21:09	A	25R		B350		91.3	88.0	VIO
JetBlue Airways	12/23/2017	0:28:27	A	30	JBU405	A320	SLC	93.7	79.0	VIO + Alt Enf
JetBlue Airways	12/24/2017	23:20:41	D	30	JBU1436	A320	SFO	87.1	79.0	VIO + Alt Enf
JetBlue Airways	12/25/2017	0:02:10	A	30	JBU405	A320	BOS	92.7	79.0	VIO + Alt Enf
JetBlue Airways	12/25/2017	0:45:43	D	30	JBU726	A320	SJC	87.2	79.0	VIO + Alt Enf
JetBlue Airways	12/26/2017	2:13:43	A	30	JBU405	A320	BOS	93.7	79.0	VIO + Alt Enf
American Airlines	12/26/2017	22:49:53	A	30	ASH5965	CRJ9	PHX	92.7	90.0	VIO
JetBlue Airways	12/26/2017	23:45:50	D	30	JBU14	A320	JFK	93.1	79.0	VIO + Alt Enf
JetBlue Airways	12/28/2017	22:08:30	A	30	JBU405	A320	BOS	93.4	90.0	VIO
Private	12/30/2017	0:18:47	A	30		FA7X		90.1	79.0	VIO
JetBlue Airways	12/30/2017	23:23:36	A	30	JBU1013	A320	PHX	94.0	79.0	VIO + Alt Enf
JetBlue Airways	12/31/2017	23:20:17	D	30	JBU180	A320	LAS	88.6	79.0	VIO + Alt Enf
JetBlue Airways	12/31/2017	23:22:23	D	30	JBU944	A320	FLL	91.1	79.0	VIO + Alt Enf
JetBlue Airways	12/31/2017	23:25:32	D	30	JBU2132	A320	SLC	90.9	79.0	VIO + Alt Enf
JetBlue Airways	12/31/2017	23:38:22	D	30	JBU1436	A320	SFO	90.5	79.0	VIO + Alt Enf

DEFINITIONS:

A/C Type — Aircraft Type

A/D/G — Arrival / Departure / Ground Operation

ALT ENF — Alternative Enforcement

RWY — Runway

SEL — SENEL — Single Event Noise Exposure Level (dBA)

VIO — Violation

AIR CARRIER NOISE BUDGET PERFORMANCE January 2017 - December 2017			
RMT #	NOISE BUDGET	ACTUAL	PERCENT BUDGET USED
9	70.7	63.6	89.9%
10	84.6	87.6	103.5%

DEFINITIONS:

RMT — Remote Monitoring Terminal

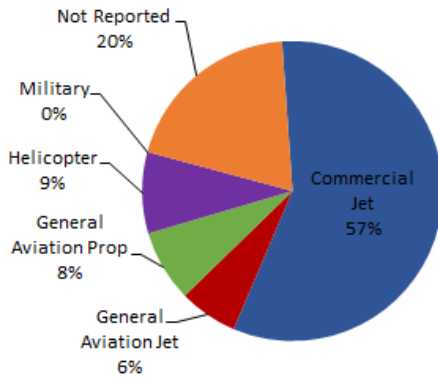
TOTAL NOISE BUDGET PERFORMANCE January 2017 - December 2017			
RMT #	NOISE BUDGET	ACTUAL	PERCENT BUDGET USED
9	102.7	71.4	69.5%
10	120.9	101.4	83.8%

Source: LGB staff calculations

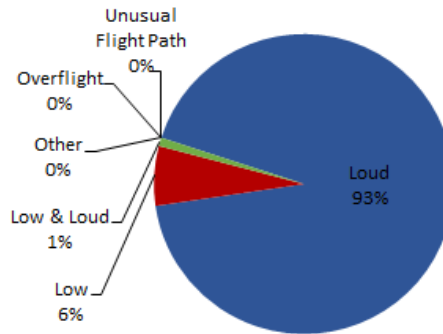
LGB AIRCRAFT NOISE COMPLAINTS

December 2017

Complaints by Aircraft Types



Complaints by Concern



Complaints by Zip Code¹

Zip Code	Complaints	Units
90740	12	2
90744	1	1
90803	1	1
90805	20	1
90807	15	7
90808	4	2
90815	1	1
92612	12	1
92626	521	2
92647	13	2
92648	52	5
92649	125	1
Grand Total	777	26

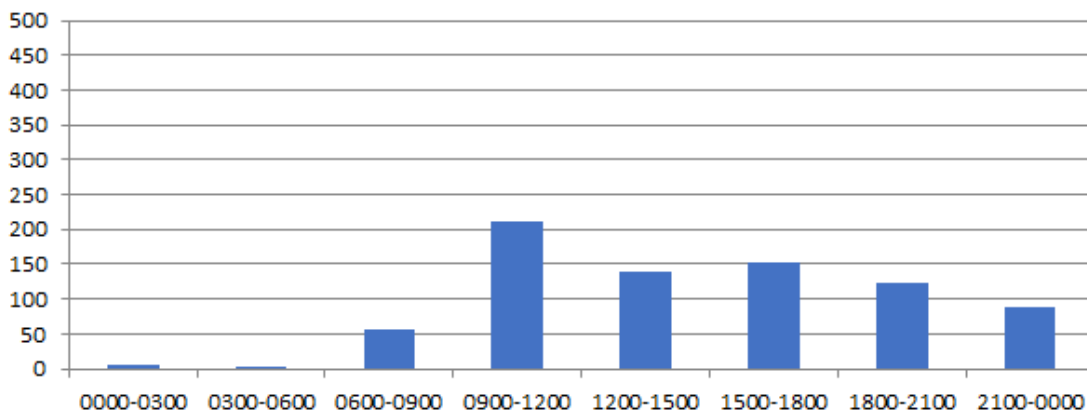
Long Beach Residents' Helicopter Complaints Submitted to FAA²

Zip Code	Individual Complaints	Number of Individuals	Anonymous Complaints	Total Complaints
90802	0	n/a	14	14
90803	135	8	41	176
90804	3	1	1	4
90808	0	n/a	3	3
90814	2	1	105	107
90815	1	1	0	1
Grand Total	141	11	164	305

¹ These data include data submitted directly to Long Beach Airport and does not include data submitted to FAA.

² These data reflect helicopter noise complaints submitted directly to FAA.

Complaints by Time





long beach airport



Long Beach Airport

4100 E. Donald Douglas Drive, Long Beach, CA 90808

www.lgb.org • lgbapt@longbeach.gov

Administration • (562) 570-2619