

Airport Advisory Commission

Wayne Chaney Sr.
Chair

Jeffrey Anderson
Vice Chair

Alvaro Castillo

Hal Gosling

Phil Ramsdale

Jeff Rowe

Roland B. Scott, Jr.

Karen Sherman



Airport Management

Jess L. Romo, A.A.E.
Airport Director

Juan López-Rios
Deputy Airport Director

Ken Mason
Executive Assistant

Claudia Lewis
Manager of Administration
& Finance

Fred Pena
Airport Operations Manager

Ambi Thurai
Engineering Officer

Dale Worsham
Administrative Officer

Karl Zittel
Airside Operations Officer

Stephanie Montuya-Morisky
Public Affairs Officer

Ron Reeves
Noise & Environmental Affairs
Officer



Long Beach Airport Monthly Noise Report October 2017

COMMERCIAL AIRCRAFT LATE NIGHT ACTIVITY
LGB Current Month & Calendar Year-To-Date Statistics (10 PM- 7AM)
October 2017

October				CY-T-D 2017		
10PM - 11PM Activity	2017	2016	Change	2017	2016	Change
Air Carrier & Commuter Operations	3,112	2,551	22.0%	29,905	21,877	36.7%
American/Mesa Airlines	2	2	0.0%	18	17	5.9%
Delta/SkyWest Airlines	0	2	-200.0%	24	18	33.3%
FedEx	0	0		0	0	
JetBlue Airways	22	20	10.0%	388	207	87.4%
Southwest Airlines	1	0	100.0%	16	3	433.3%
UPS	0	1		0	1	
Subtotal 10PM-11PM	25	25	0.0%	446	246	81.3%
11PM- 7AM Activity	2017	2016	Change	2017	2016	Change
American/Mesa Airlines	0	1	-100.0%	11	22	-50.0%
Delta/SkyWest Airlines	0	0		6	3	100.0%
FedEx	0	0		0	0	
JetBlue Airways	10	4	150.0%	219	108	102.8%
Southwest Airlines	0	0		5	1	400.0%
UPS	0	0		0	0	
Subtotal 11PM-7AM	10	5	100.0%	241	134	79.9%
TOTAL	35	30	16.7%	687	380	80.8%

Notes:

1.1% (35 of 3,112) of total commercial operations occurred between 10pm - 7am.

1.1 flights - Nightly average for all late night (10:00 PM—7:00 AM) commercial flights, includes unanticipated delays.

0.3 flights - Nightly average for commercial flights after 11 PM.

Of the 35 Late-Night Operations, 31% were due to maintenance issues, 29% were due to air traffic control-related issues, 17% occurred during the 5-minute grace period, 6% were due to staffing-related issues, 6% were due to unknown reasons, 3% were due to poor weather conditions, 3% were due to a hurricane relief flight, 3% were due to catering issues and 3% were due to a ferry flight.

AIRPORT NOISE VIOLATIONS LGB Current Month & Calendar Year-To-Date Statistics October 2017						
October				CY-T-D 2017		
Air Carrier Noise Violations	2017	2016	Change	2017	2016	Change
American/Mesa Airlines	0	0		6	4	50.0%
Delta/SkyWest Airlines	0	0		4	4	0.0%
FedEx	0	0		0	0	
JetBlue Airways	10	5	100.0%	219	100	119.0%
Southwest Airlines	0	0		3	0	300.0%
UPS	0	0		0	1	-100.0%
Subtotal	10	5	100.0%	232	109	112.8%
Commuter Noise Violations	2017	2016	Change	2017	2016	Change
American/Mesa Airlines	0	0		0	0	
Delta/SkyWest Airlines	0	0		0	1	-100.0%
Subtotal	0	0		0	1	-100.0%
Non-Commercial Noise Violations	2017	2016	Change	2017	2016	Change
All GA, Charter & Other	18	9	100.0%	146	140	4.3%
TOTAL	28	14	100.0%	378	250	51.2%
Monetary Fines						
Airport Surcharges	\$1,900	\$700		\$21,900	\$14,700	
Consent Decree	\$48,000	\$12,000		\$1,128,000	\$456,000	
TOTAL	\$49,900	\$12,700		\$1,149,900	\$470,700	

AIRPORT OPERATIONS LGB Current Month & Calendar Year-To-Date Statistics October 2017						
October				CY-T-D 2017		
Airport Operations (FAA)	2017	2016	Change	2017	2016	Change
Air Carrier + Commuter Carriers	3,112	2,551	22.0%	29,905	21,877	36.7%
Air Taxi + General Aviation	25,421	23,945	6.2%	237,499	243,872	-2.6%
Military Operations	133	84	58.3%	1,175	1,132	3.8%
Total Aircraft Operations	28,666	26,580	7.8%	268,579	266,881	0.6%

Notes:

0.1% (28 of 28,666) of the Airport's total aircraft operations (Commercial & GA) resulted in an aircraft noise violation.

0.3% (10 of 3,112) of the Airport's Commercial operations (Commercial & Commuter) resulted in an aircraft noise violation.

AIRCRAFT NOISE VIOLATORS

October 2017

OWNERNAME	DATE	TIME	A/D	RWY	A/C TYPE	SEL	LIMIT	STATUS
JetBlue Airways Corporation	10/1/2017	22:13:30	A	30	A320	92.8	90.0	VIO
32Eagle LLC	10/3/2017	12:17:59	D	25R	C210	94.2	92.0	VIO
Paradigm Air Carriers Inc.	10/5/2017	23:17:28	D	30	B734	93.8	79.0	VIO
L60 Aviation LLC	10/6/2017	0:11:09	A	30	LJ60	86.8	79.0	VIO
Casey Company	10/7/2017	0:17:07	D	30	C56X	87.1	79.0	VIO
Kumagai	10/7/2017	6:21:29	D	30	GLF5	93.9	90.0	VIO
JetBlue Airways Corporation	10/8/2017	23:29:14	A	30	A320	93	79.0	VIO + Alt Enf
JetBlue Airways Corporation	10/8/2017	23:31:59	A	30	A320	93	79.0	VIO + Alt Enf
Casey Company	10/9/2017	23:28:28	A	30	C56X	91.5	79.0	VIO
Swift Air LLC	10/9/2017	23:40:38	D	30	B737	95.6	79.0	VIO
JetBlue Airways Corporation	10/11/2017	23:25:29	A	25R	A320	92.6	n/a	VIO + Alt Enf
JetBlue Airways Corporation	10/12/2017	0:17:03	D	25R	A320	96.3	n/a	VIO + Alt Enf
JetBlue Airways Corporation	10/13/2017	0:39:30	D	30	A320	89.7	79.0	VIO + Alt Enf
JetBlue Airways Corporation	10/13/2017	0:53:13	A	30	A320	93.7	79.0	VIO + Alt Enf
Elite Airways	10/14/2017	23:47:14	A	30	CRJ7	90.4	79.0	VIO
Private	10/16/2017	23:09:45	A	30	PA44	82.2	79.0	VIO
Chantilly Air Inc	10/20/2017	0:20:54	A	30	CL30	88.1	79.0	VIO
JetBlue Airways Corporation	10/20/2017	4:12:06	D	30	A320	90.1	79.0	VIO + Alt Enf
Red Wing Aeroplane	10/21/2017	1:19:01	D	30	C560	83.9	79.0	VIO
Nalpak Consulting LLC	10/22/2017	1:09:20	A	30	F2TH	87.6	79.0	VIO
JetBlue Airways Corporation	10/23/2017	22:51:44	A	30	A320	92.1	90.0	VIO
JetBlue Airways Corporation	10/25/2017	23:10:03	A	30	A320	92.1	79.0	VIO + Alt Enf
Redhead LLC	10/26/2017	12:27:19	D	25L	BE18	97.2	95.0	VIO
Private	10/27/2017	9:57:38	D	25L	L12	106.5	95.0	VIO
Kalitta Charter I	10/30/2017	0:42:06	A	30	LJ35	90.1	79.0	VIO
Kuda Group LLC	10/30/2017	22:18:49	A	30	P180	101.4	90.0	VIO

AIRCRAFT NOISE VIOLATORS

October 2017

OWNERNAME	DATE	TIME	A/D	RWY	A/C TYPE	SEL	LIMIT	STATUS
Private	10/30/2017	23:14:31	D	30	CL30	83.5	79.0	VIO
Teton Leasing LLC	10/31/2017	5:02:08	A	30	C560	84.5	79.0	VIO

DEFINITIONS:

A/C Type — Aircraft Type

RWY — Runway

A/D/G — Arrival / Departure / Ground Operation

SEL — SENEL — Single Event Noise Exposure Level (dBA)

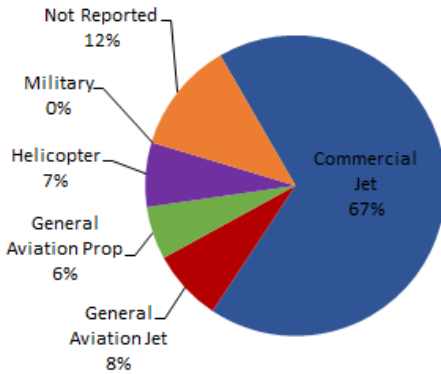
ALT ENF — Alternative Enforcement

VIO — Violation

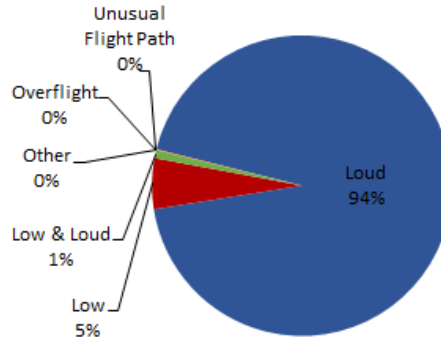
LGB AIRCRAFT NOISE COMPLAINTS

October 2017

Complaints by Aircraft Types



Complaints by Concern



Complaints by Zip Code¹

Zip Code	Complaints	Units
90277	2	2
90501	1	1
90505	4	2
90713	3	1
90740	6	1
90755	3	1
90805	33	1
90807	46	14
90808	14	6
90815	7	4
92612	12	1
92626	573	2
92646	1	1
92647	14	3
92648	137	10
92649	299	5
Not Reported	1	1
Grand Total	1,156	56

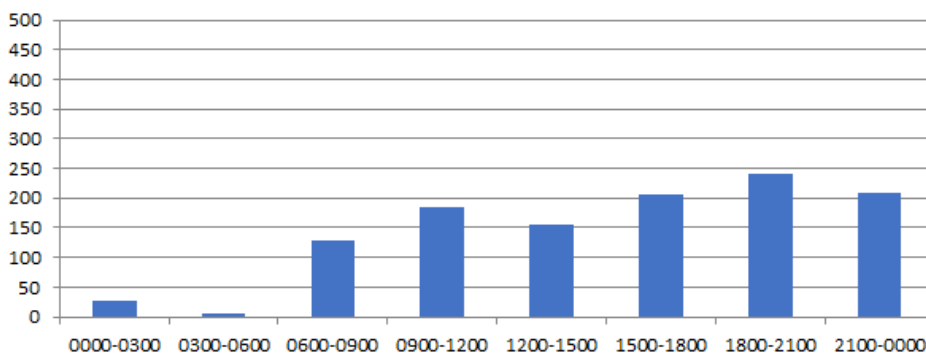
Long Beach Residents' Helicopter Complaints Submitted to FAA²

Zip Code	Individual Complaints	Number of Individuals	Anonymous Complaints	Total Complaints
90802	2	1	0	2
90803	418	11	116	534
90804	2	1	2	4
90806	4	1	0	4
90808	0	n/a	5	5
90813	0	n/a	2	2
90814	27	5	42	69
Grand Total	453	19	167	620

¹ These data include data submitted directly to Long Beach Airport and does not include data submitted to FAA.

² These data reflect helicopter noise complaints submitted directly to FAA.

Complaints by Time





long beach airport



Long Beach Airport

4100 E. Donald Douglas Drive, Long Beach, CA 90808

www.lgb.org • lgbapt@longbeach.gov

Administration • (562) 570-2619