

SITE DESCRIPTION

WALKABILITY

The project is located within a 5-minute walk (1/4 mile radius) of the southern edge of Downtown Long Beach. Within a 10-minute walk is the East Village, neighborhood shopping, art venues, restauratns, and beach access.

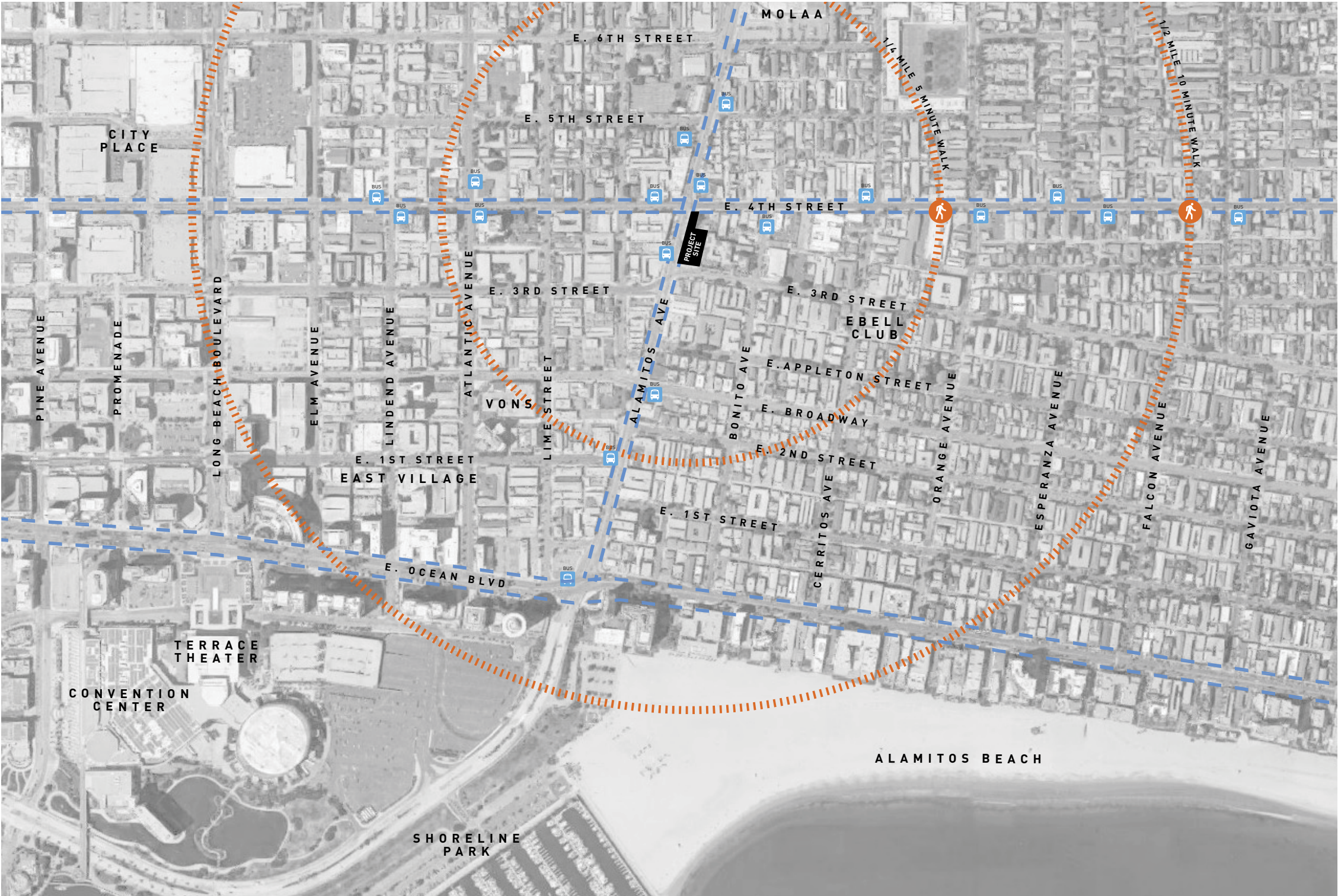
TRANSIT

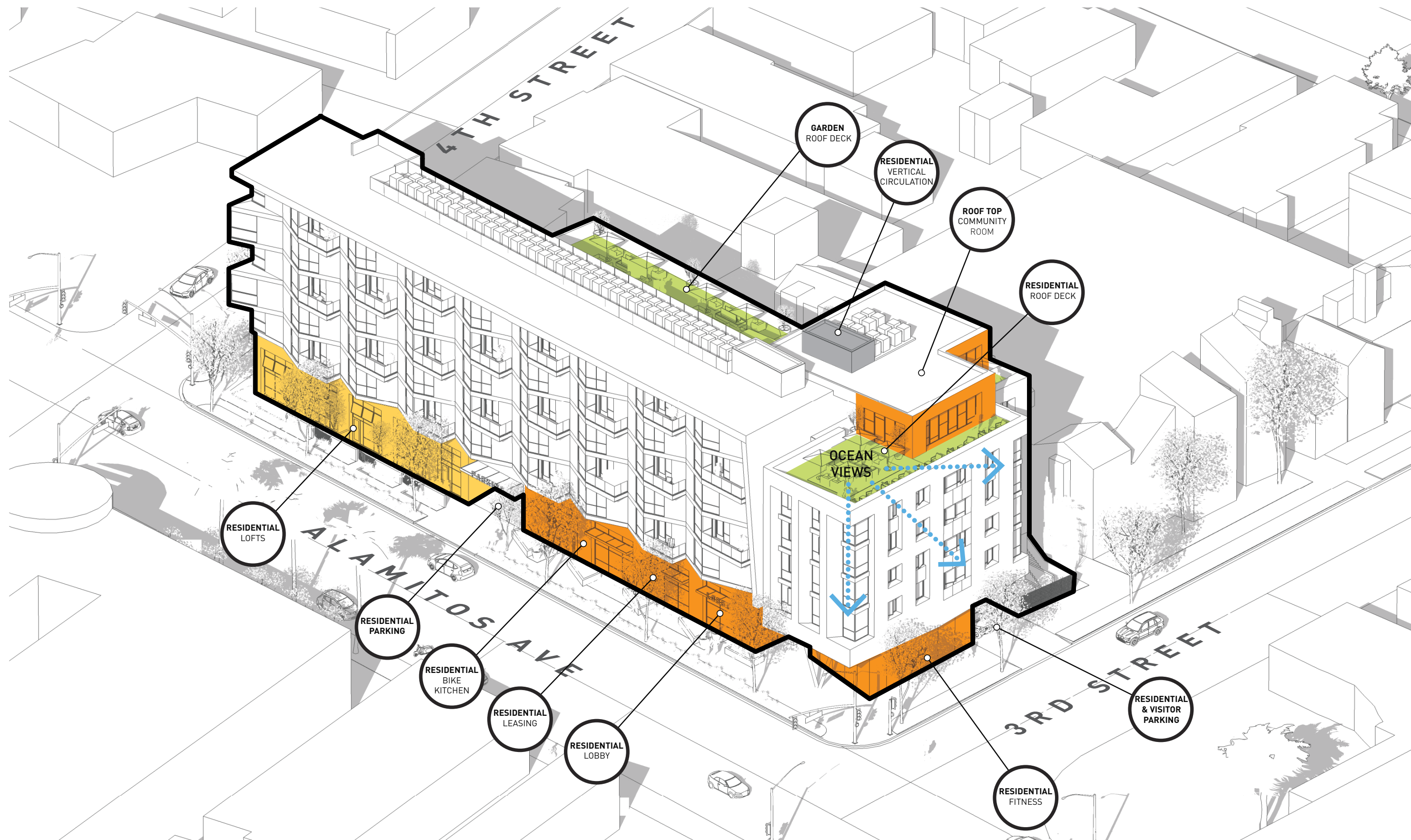
The project is a Transit Oriented Development with Metro bus lines (71, 72, 151) located immediately in front of the project connecting the site with regional locations throughout Los Angeles. Work centers are accessible by public transit from the site, lessening dependence on automobiles. The project is in close proximity of the 710 Long Beach Freeway and Metro Blue Line for connections throughout Southern California.

The development is also surrounded by bike-ways that connect throughout the Long Beach region.

LAND USE

The project is located on an urban infill site, surrounded by a wide variety of land uses. The commercial component of the development could provide a source for local jobs and a destination for those in the surrounding neighborhoods.







DESIGN: VIEW FROM 3RD AND ALAMITOS
320 ALAMITOS SITE PLAN REVIEW. long beach, ca

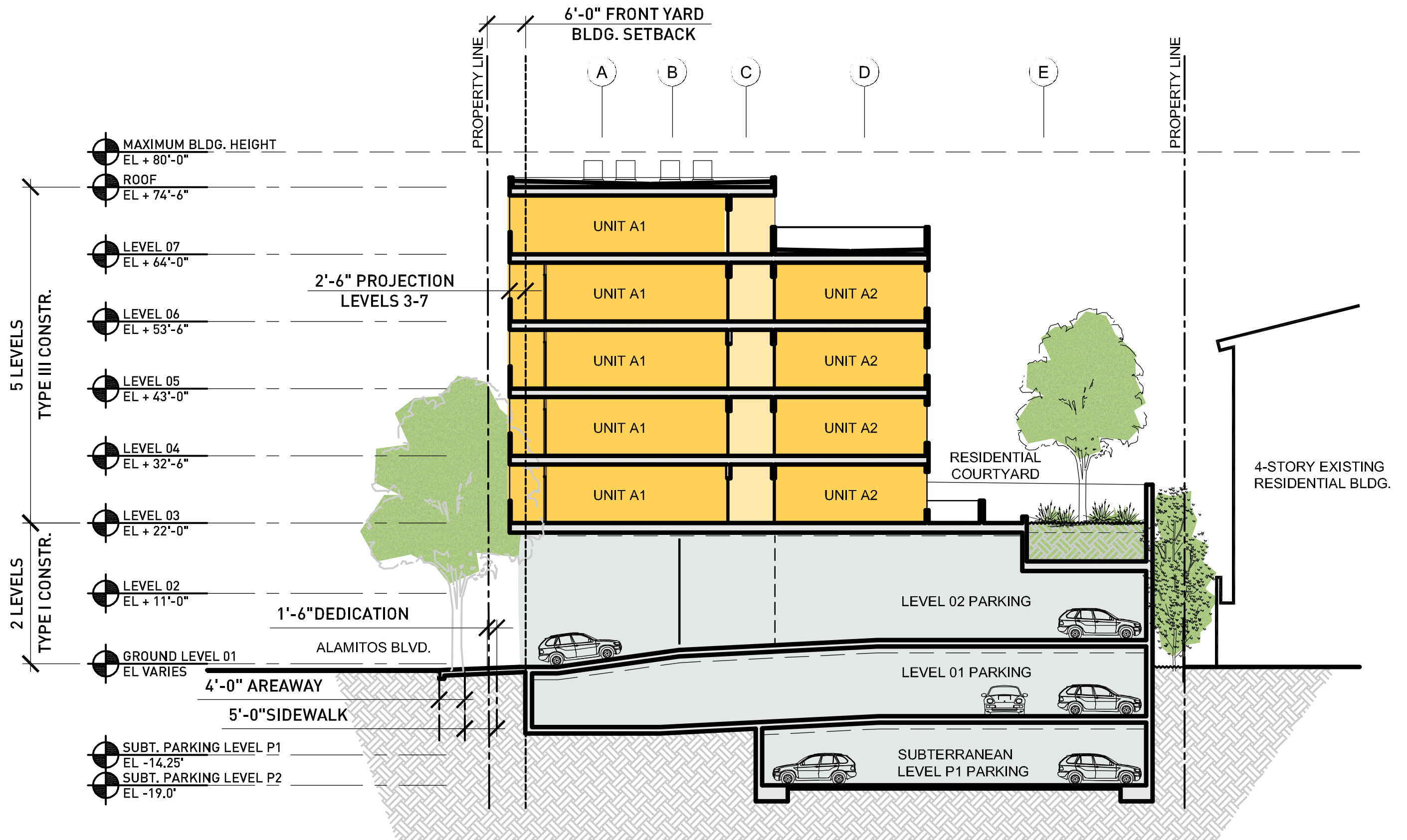


DESIGN: VIEW FROM 4TH AND ALAMITOS
320 ALAMITOS SITE PLAN REVIEW. long beach, ca





DESIGN: VIEW OF LOFTS FROM ALAMITOS
320 ALAMITOS SITE PLAN REVIEW. long beach, ca



EAST WEST CROSS SECTION