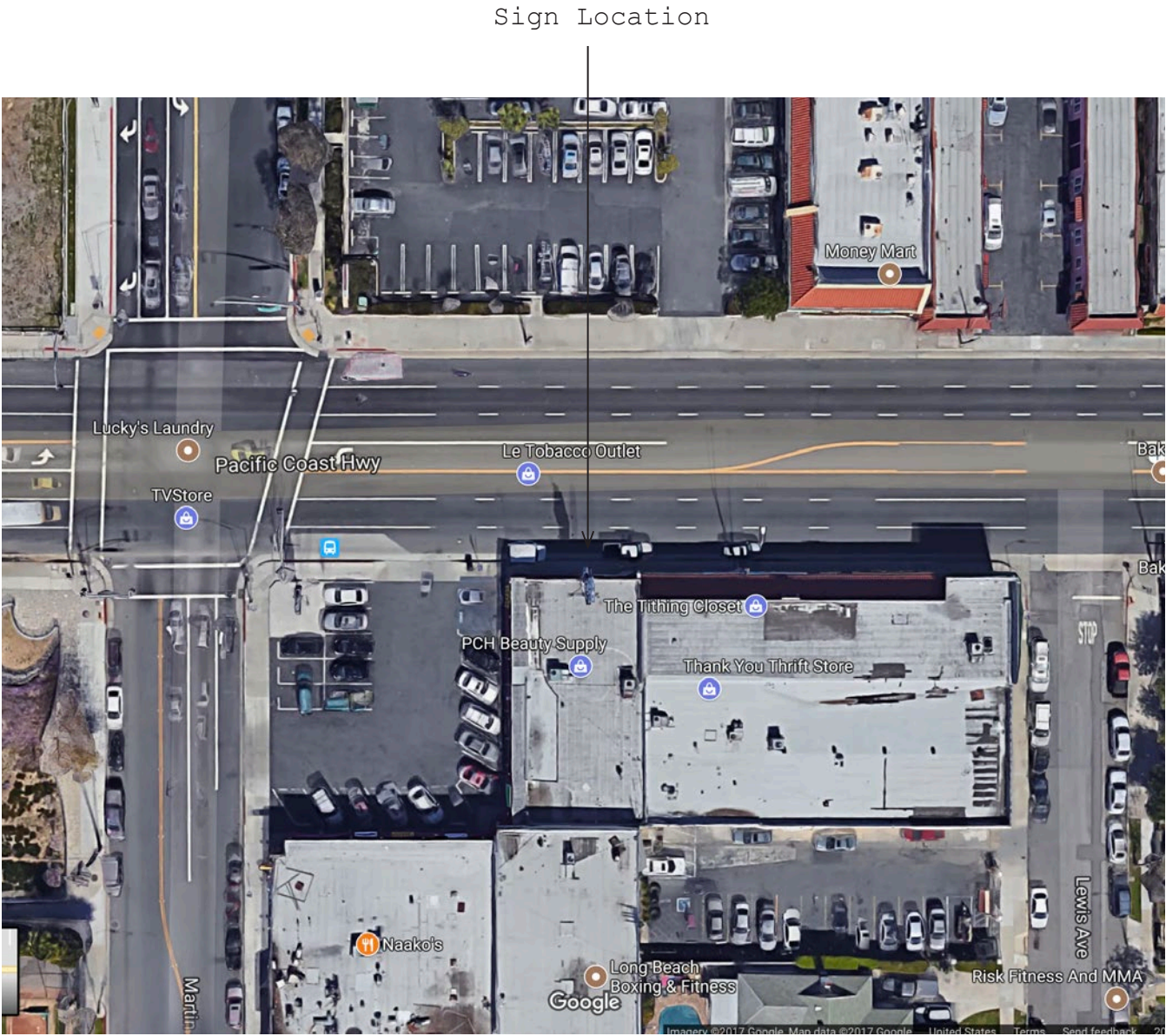
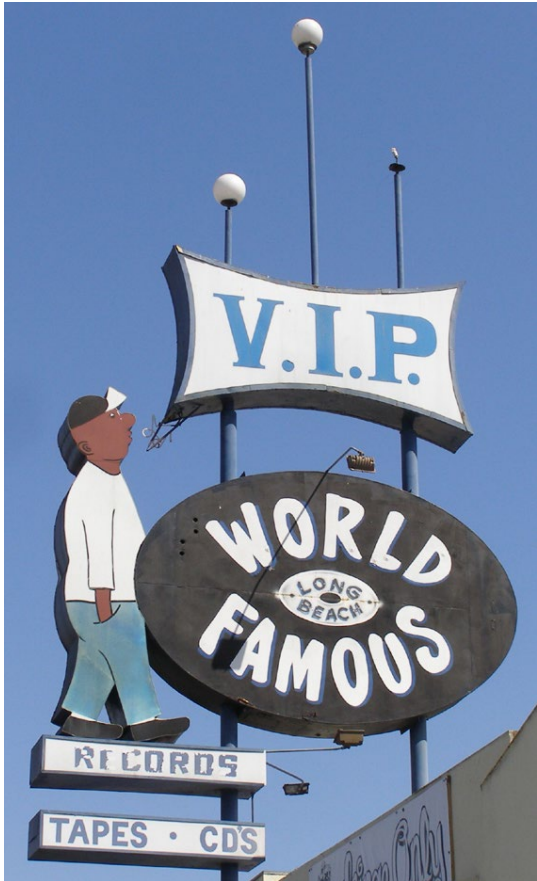


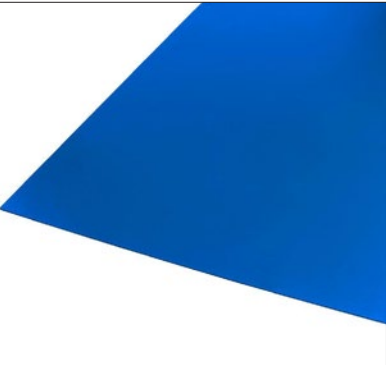
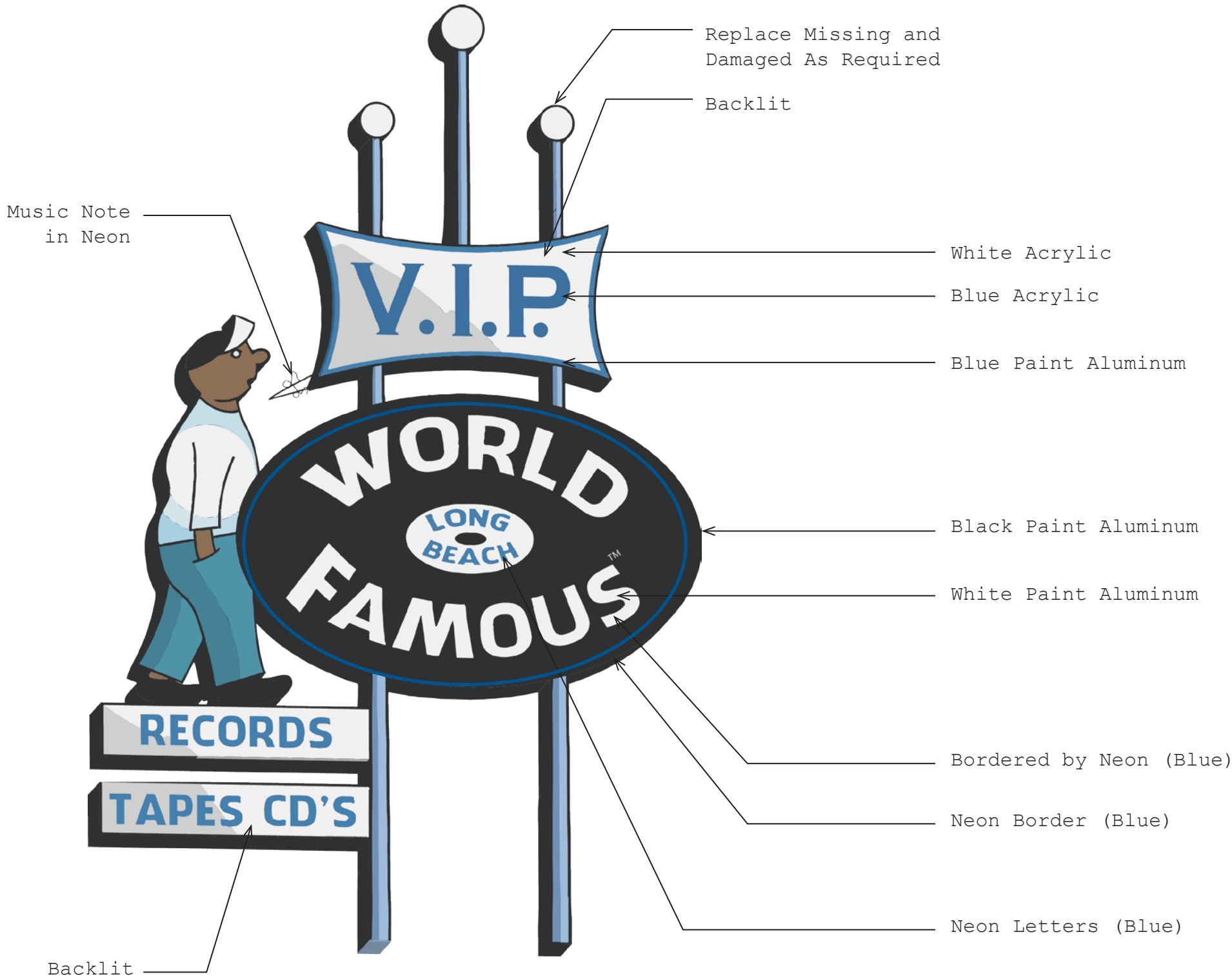


V.I.P. RECORDS SIGN





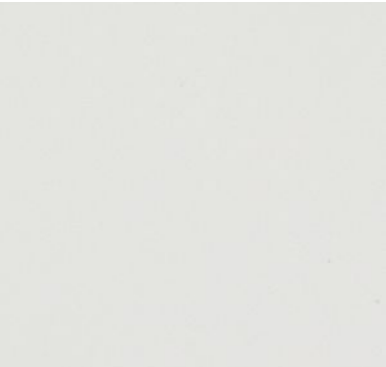




Blue Acrylic



White Acrylic



White Paint Aluminum



Black Paint Aluminum



Blue Paint Aluminum



REMOVAL AND STORAGE:

The existing sign must be removed from the current location. At the time of this application, there is not an identified location for the sign to be immediately reinstalled. The proposed plan as detailed in the attached Detailed Deconstruction Drawings, calls for the removal and storage as follows; the temporary removal of the glass globes at the top of the sign to allow for the installation of connection points, allowing removal by crane. The sign will then be removed in two major sections, the upper and lower, at the locations identified. Upon removal, the individual elements of the sign will be numbered, crated and stored for future restoration.

RESTORATION:

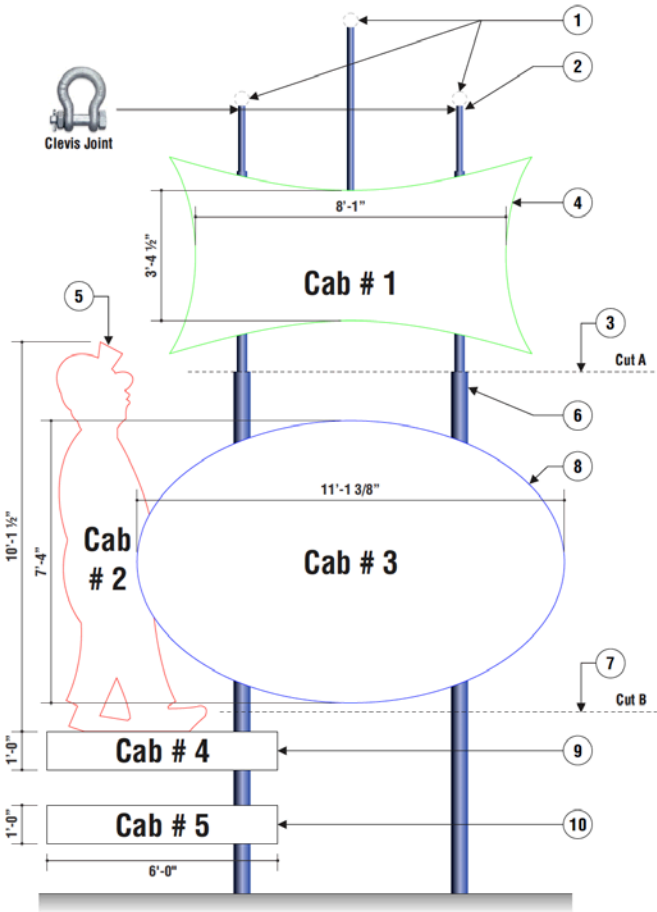
The sign is constructed of three distinct elements, an upper portion, that is a sheet metal border, with a backlit PVC panel and vinyl letters. A lower portion that is all sheet metal with painted graphics and neon accents, and the three original poles with lit globes at the top.

While the sign has gone thru a number of renditions over the years, the applicant has chosen to reflect the signage at its period of historical significance. As such, it is proposed to restore the upper portion by reinforcing the original sheet metal enclosure and re-wiring for new lighting. The PVC panel would be replaced with new lettering to match the original design. The center section would remain as the original sheet metal elements, and receive restorative paint to match the design as proposed. The neon that is currently not functioning, would be replaced. The sign would then be reinstalled on new steel poles with restored and new, lit globes at the top. All colors and materials would be proposed on the material finish board.





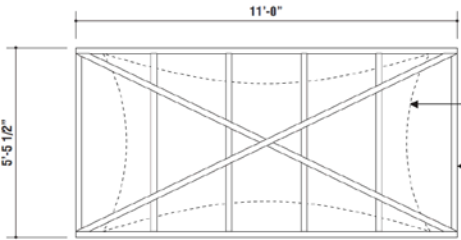
1 Cabinet Designations  
Scale: nts



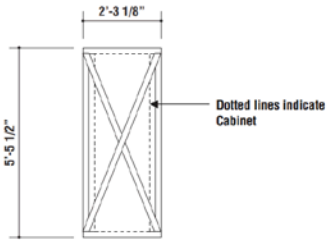
1 Existing Signage / Label Reference  
Scale: nts

Signage Removal Instructions

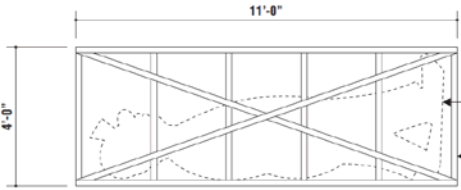
1. Remove / cut off light fixtures at top of pipes
  2. Set clevis joints and secure / harness with crane
  3. Cut pipes at "Cut A"
  4. Lift pipes and Cabinet # 1 with crane and place in flat bed truck
  5. Unbolt Cabinet # 2 from Cabinet # 3 & # 4
  6. Remove and place on flat bed truck
  7. Set clevis joints and secure / harness with crane
  8. Cut pipes at "Cut B"
  9. Left pipes and Cabinet # 3 with crane and place in flat bed truck for transportation to TNT shop
  10. Unbolt saddle connection to pipe
  11. Remove and place on flat bed truck
  12. Unbolt saddle connection to pipe
  13. Remove and place on flat bed truck
- Secure all items on flat bed truck and transport to TNT shop for crating and storage



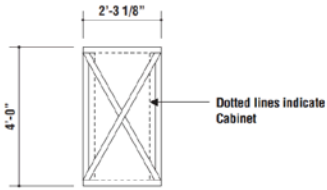
1 Cabinet # 1 / Crating layout - Front View  
Scale: nts



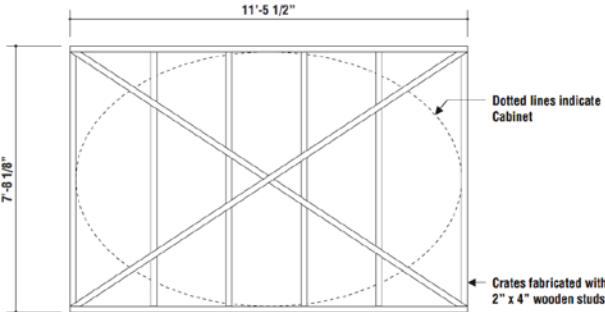
2 Cabinet # 1 / Crating layout - Side View  
Scale: nts



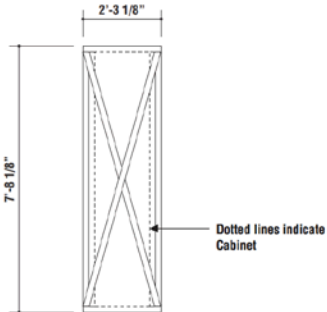
3 Cabinet # 2 / Crating layout - Front View  
Scale: nts



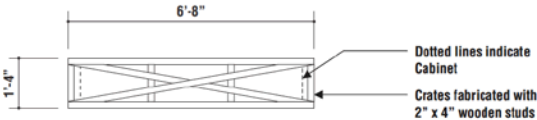
4 Cabinet # 2 / Crating layout - Side View  
Scale: nts



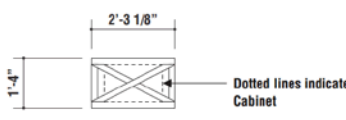
5 Cabinet # 3 / Crating layout - Front View  
Scale: nts



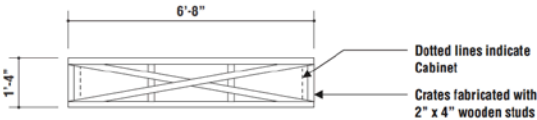
6 Cabinet # 3 / Crating layout - Side View  
Scale: nts



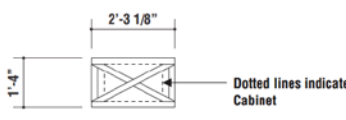
1 Cabinet # 4 / Crating layout - Front View  
Scale: nts



2 Cabinet # 4 / Crating layout - Side View  
Scale: nts



3 Cabinet # 5 / Crating layout - Front View  
Scale: nts



4 Cabinet # 5 / Crating layout - Side View  
Scale: nts