

Airport Advisory Commission

Wayne Chaney Sr.
Chair

Jeffrey Anderson
Vice Chair

Alvaro Castillo

Hal Gosling

Phil Ramsdale

Jeff Rowe

Roland B. Scott, Jr.

Karen Sherman



Airport Management

Jess L. Romo, A.A.E.
Airport Director

Juan López-Rios
Deputy Airport Director

Ken Mason
Executive Assistant

Claudia Lewis
Manager of Administration
& Finance

Fred Pena
Airport Operations Manager

Ambi Thurai
Engineering Officer

Dale Worsham
Administrative Officer

Karl Zittel
Airside Operations Officer

Stephanie Montuya-Morisky
Public Affairs Officer

Ron Reeves
Noise & Environmental Affairs
Officer



Long Beach Airport Monthly Noise Report May 2017

COMMERCIAL AIRCRAFT LATE NIGHT ACTIVITY
LGB Current Month & Calendar Year-To-Date Statistics (10 PM- 7AM)
May 2017

May				CY-T-D 2017		
10PM - 11PM Activity	2017	2016	Change	2017	2016	Change
Air Carrier & Commuter Operations	3,085	2,119	45.6%	14,805	9,638	53.6%
American/Mesa Airlines	0	1	-100.0%	7	5	40.0%
Delta/SkyWest Airlines	2	1	100.0%	13	16	-18.8%
FedEx	0	0		0	0	
JetBlue Airways	36	10	260.0%	180	117	53.8%
Southwest Airlines	2	0	200.0%	10	0	1,000.0%
UPS	0	0		0	0	
Subtotal 10PM-11PM	40	12	233.3%	210	138	52.2%
11PM- 7AM Activity	2017	2016	Change	2017	2016	Change
American/Mesa Airlines	2	1	100.0%	8	15	-46.7%
Delta/SkyWest Airlines	2	0	200.0%	5	2	150.0%
FedEx	0	0		0	0	
JetBlue Airways	16	2	700.0%	94	57	64.9%
Southwest Airlines	0	0		5	0	500.0%
UPS	0	0		0	0	
Subtotal 11PM-7AM	20	3	566.7%	112	74	51.4%
TOTAL	60	15	300.0%	322	212	51.9%

Notes:

2.0% (60 of 3,085) of total commercial operations occurred between 10pm - 7am.

1.9 flights - Nightly average for all late night (10:00 PM—7:00 AM) commercial flights, includes unanticipated delays.

0.7 flights - Nightly average for commercial flights after 11 PM.

Of the 60 Late-Night Operations, 32% were due to mechanical issues, 28% were due to air traffic control-related issues, 15% occurred during the 5-minute grace period, 12% were due to poor weather conditions, 6% were due to unknown reasons, 5% were due to crew-related issues and 2% were due to weight-and-balance issues associated with an aircraft.

AIRPORT OPERATIONS & AIRCRAFT NOISE VIOLATIONS

LGB Current Month & Calendar Year-To-Date Statistics

May 2017

May				CY-T-D 2017		
Air Carrier Noise Violations	2017	2016	Change	2017	2016	Change
American/Mesa Airlines	0	1	-100.0%	2	1	100.0%
Delta/SkyWest Airlines	2	0	200.0%	3	3	0.0%
FedEx	0	0		0	0	
JetBlue Airways	16	5	220.0%	94	64	46.9%
Southwest Airlines	0	0		2	0	200.0%
UPS	0	0		0	1	-100.0%
Subtotal	18	6	200.0%	101	69	46.4%
Commuter Noise Violations	2017	2016	Change	2017	2016	Change
American/Mesa Airlines	0	0		0	0	
Delta/SkyWest Airlines	0	0		0	1	-100.0%
Subtotal	0	0		0	1	-100.0%
Non-Commercial Noise Violations	2017	2016	Change	2017	2016	Change
All GA, Charter & Other	12	16	-25.0%	77	77	0.0%
TOTAL	30	22	36.4%	178	147	21.1%
Monetary Fines						
Airport Surcharges	\$2,100	\$1,700		\$11,200	\$8,300	
Consent Decree	\$78,000	\$9,000		\$468,000	\$282,000	
TOTAL	\$80,100	\$10,700		\$479,200	\$290,300	
Airport Operations (FAA)	2017	2016	Change	2017	2016	Change
Air Carrier + Commuter Carriers	3,085	2,119	45.6%	14,805	9,638	53.6%
Air Taxi + General Aviation	26,343	25,266	4.3%	112,454	117,702	-4.5%
Military Operations	143	113	26.5%	622	692	-10.1%
Total Aircraft Operations	29,571	27,498	7.5%	127,881	128,032	-0.1%

Notes:

0.1% (30 of 29,571) of the Airport's total aircraft operations (Commercial & GA) resulted in an aircraft noise violation.

0.6% (18 of 3,085) the Airports Commercial operations (Commercial & Commuter) resulted in an aircraft noise violation.

AIRCRAFT NOISE VIOLATORS

May 2017

OWNERNAME	DATE	TIME	A/D	RWY	A/C TYPE	SEL	LIMIT	STATUS
JetBlue Airways Corporation	5/2/2017	1:10:39	A	30	A320	93.6	79.0	VIO + Alt Enf
JetBlue Airways Corporation	5/2/2017	23:09:47	A	30	A320	92.8	79.0	VIO + Alt Enf
Morningstar Partners Ltd.	5/6/2017	1:00:23	D	30	GLEX	84.7	79.0	VIO
JetBlue Airways Corporation	5/6/2017	1:03:16	A	30	A320	94.2	79.0	VIO + Alt Enf
Delta Air Lines / SkyWest Airlines	5/8/2017	23:21:52	A	30	CRJ9	90.9	79.0	VIO
JetBlue Airways Corporation	5/14/2017	1:12:00	A	30	A320	93.2	79.0	VIO + Alt Enf
Olympia Aviation LLC	5/14/2017	18:16:30	D	12	MD81	106	102.5	VIO
Private	5/16/2017	11:57:58	D	25R	HXB	96.6	92.0	VIO
N711 Aviation LLC	5/17/2017	0:38:58	A	30	GLF4	83.3	79.0	VIO
Private	5/18/2017	23:35:25	D	30	C172	81.7	79.0	VIO
Maran Desarrollos S.A. de C.V.	5/19/2017	1:34:10	D	30	C525	81.8	79.0	VIO
One Dot Above LLC	5/19/2017	5:06:01	A	30	DA40	82.4	79.0	VIO
Island Express Helicopters Inc.	5/20/2017	16:19:04	A	25R	HELI	92.9	88.0	VIO
JetBlue Airways Corporation	5/21/2017	23:10:11	A	30	A320	93.6	79.0	VIO + Alt Enf
Jones & Sons Farms Inc	5/22/2017	0:24:26	D	12	BE90	81.3	79.0	VIO
Archangel Technology LLC	5/22/2017	10:48:56	D	25L	BE50	98.9	95.0	VIO
JetBlue Airways Corporation	5/22/2017	22:16:25	A	30	A320	93.8	90.0	VIO
JetBlue Airways Corporation	5/25/2017	0:22:30	A	30	A320	94.2	79.0	VIO + Alt Enf
Air Methods Corporation	5/25/2017	1:17:23	A	30	HELI	87.3	79.0	VIO
JetBlue Airways Corporation	5/25/2017	1:45:55	A	30	A320	93.3	79.0	VIO + Alt Enf
JetBlue Airways Corporation	5/25/2017	22:21:15	D	12	A320	95.9	90.0	VIO
JetBlue Airways Corporation	5/26/2017	0:00:44	D	30	A320	96	79.0	VIO + Alt Enf
JetBlue Airways Corporation	5/26/2017	22:28:52	A	30	A320	93.2	90.0	VIO
JetBlue Airways Corporation	5/26/2017	23:30:34	D	30	A320	95.3	79.0	VIO + Alt Enf
JetBlue Airways Corporation	5/26/2017	23:58:01	A	30	A320	93.2	79.0	VIO + Alt Enf
Delta Air Lines / SkyWest Airlines	5/27/2017	1:09:26	A	30	CRJ9	90.7	79.0	VIO

AIRCRAFT NOISE VIOLATORS

May 2017

OWNERNAME	DATE	TIME	A/D	RWY	A/C TYPE	SEL	LIMIT	STATUS
Greco Equipment Leasing LLC	5/27/2017	22:54:11	D	30	C650	93.5	90.0	VIO
JetBlue Airways Corporation	5/27/2017	23:32:56	A	30	A320	94.2	79.0	VIO + Alt Enf
JetBlue Airways Corporation	5/28/2017	23:31:21	D	30	A320	93.9	79.0	VIO + Alt Enf
JetBlue Airways Corporation	5/28/2017	23:43:18	A	30	A320	93.5	79.0	VIO + Alt Enf

DEFINITIONS:

A/C Type — Aircraft Type

A/D/G — Arrival / Departure / Ground Operation

ALT ENF — Alternative Enforcement

RWY — Runway

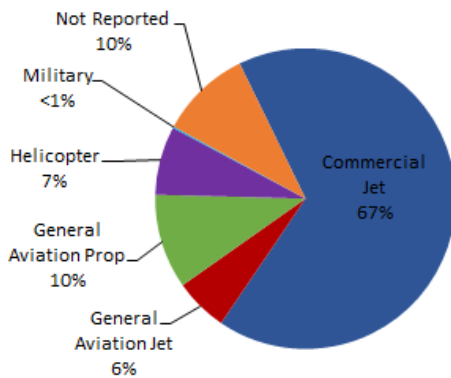
SEL — SENEL — Single Event Noise Exposure Level (dBA)

VIO — Violation

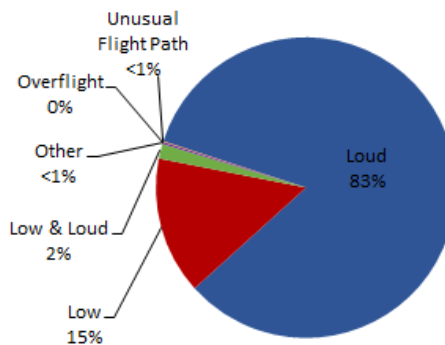
LGB AIRCRAFT NOISE COMPLAINTS

May 2017

Complaints by Aircraft Types



Complaints by Concern



Complaints by Zip Code¹

Zip Code	Complaints	Units
90712	2	1
90713	9	1
90755	3	1
90803	11	10
90804	1	1
90805	14	1
90807	37	14
90808	7	3
90815	5	5
92612	37	1
92626	873	3
92648	107	7
92649	215	2
92677	1	1
Not Reported	3	2
Grand Total	1,325	53

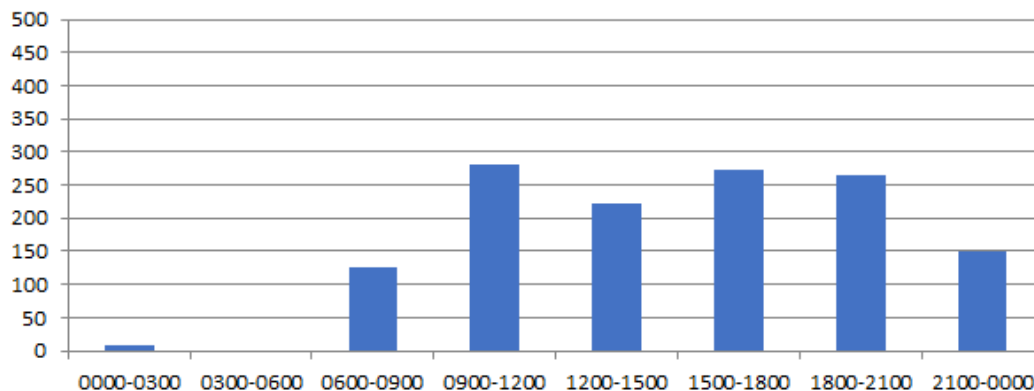
Long Beach Residents' Helicopter Complaints Submitted to FAA²

Zip Code	Individual Complaints	Number of Individuals	Anonymous Complaints	Total Complaints
90802	5	2	6	11
90803	389	11	153	542
90804	4	1	9	13
90808	0	n/a	15	15
90810	0	n/a	3	3
90814	383	11	31	414
Grand Total	781	25	217	998

¹ These data include data submitted directly to Long Beach Airport and does not include data submitted to FAA.

² These data reflect helicopter noise complaints submitted directly to FAA.

Complaints by Time





long beach airport



Long Beach Airport

4100 E. Donald Douglas Drive, Long Beach, CA 90808

www.lgb.org • lgbapt@longbeach.gov

Administration • (562) 570-2619