

Airport Advisory Commission

Karen Sherman
Chair

Jeffrey Anderson

Wayne Chaney Sr.

Elizabeth Cruz

Hal Gosling

Gerald Mineghino

Jeff Rowe

Roland B. Scott, Jr.

Airport Management

Jess L. Romo, A.A.E.
Airport Director

Juan López-Rios
Deputy Airport Director

Ken Mason
Executive Assistant

Claudia Lewis
Manager of Administration
& Finance

Fred Pena
Airport Operations Manager

Ambi Thurai
Engineering Officer

Dale Worsham
Administrative Officer

Karl Zittel
Airside Operations Officer

Stephanie Montuya-Morisky
Public Affairs Officer

Ron Reeves
Noise & Environmental Affairs
Officer



Long Beach Airport Monthly Noise Report April 2017

COMMERCIAL AIRCRAFT LATE NIGHT ACTIVITY
LGB Current Month & Calendar Year-To-Date Statistics (10 PM- 7AM)
April 2017

April				CY-T-D 2017		
10PM - 11PM Activity	2017	2016	Change	2017	2016	Change
Air Carrier & Commuter Operations	2,992	1,923	55.6%	11,720	7,519	55.9%
American/Mesa Airlines	1	0	100.0%	7	4	75.0%
Delta/SkyWest Airlines	0	1	-100.0%	11	15	-26.7%
FedEx	0	0		0	0	
JetBlue Airways	30	21	42.9%	144	107	34.6%
Southwest Airlines	1	0	100.0%	8	0	800.0%
UPS	0	0		0	0	
Subtotal 10PM-11PM	32	22	45.5%	170	126	34.9%
11PM- 7AM Activity	2017	2016	Change	2017	2016	Change
American/Mesa Airlines	0	1	-100.0%	6	14	-57.1%
Delta/SkyWest Airlines	1	0	100.0%	3	2	50.0%
FedEx	0	0		0	0	
JetBlue Airways	17	5	240.0%	78	55	41.8%
Southwest Airlines	0	0		5	0	500.0%
UPS	0	0		0	0	
Subtotal 11PM-7AM	18	6	200.0%	92	71	29.6%
TOTAL	50	28	78.6%	262	197	33.0%

Notes:

1.7% (50 of 2,992) of total commercial operations occurred between 10pm - 7am.

1.7 flights - Nightly average for all late night (10:00 PM—7:00 AM) commercial flights, includes unanticipated delays.

0.6 flights - Nightly average for commercial flights after 11 PM.

Of the 50 Late-Night Operations, 32% were due to poor weather conditions, 30% were due to mechanical issues, 20% were due to air traffic control-related issues, 6% occurred during the 5-minute grace period, 6% were due to crew-related issues, 2% were due to routing-related issues, 2% were due to weight and balance-related issues and 2% were due to unknown reasons.

AIRPORT OPERATIONS & AIRCRAFT NOISE VIOLATIONS

LGB Current Month & Calendar Year-To-Date Statistics

April 2017

April				CY-T-D 2017		
Air Carrier Noise Violations	2017	2016	Change	2017	2016	Change
American/Mesa Airlines	0	0		2	0	200.0%
Delta/SkyWest Airlines	0	0		1	3	-66.7%
FedEx	0	0		0	0	
JetBlue Airways	21	10	110.0%	78	59	32.2%
Southwest Airlines	0	0		2	0	200.0%
UPS	0	0		0	1	-100.0%
Subtotal	21	10	110.0%	83	63	31.7%
Commuter Noise Violations	2017	2016	Change	2017	2016	Change
American/Mesa Airlines	0	0		0	0	
Delta/SkyWest Airlines	0	0		0	1	-100.0%
Subtotal	0	0		0	1	-100.0%
Non-Commercial Noise Violations	2017	2016	Change	2017	2016	Change
All GA, Charter & Other	10	16	-37.5%	65	61	6.6%
TOTAL	31	26	19.2%	148	125	18.4%
Monetary Fines						
Airport Surcharges	\$2,000	\$2,400		\$9,100	\$6,100	
Consent Decree	\$84,000	\$15,000		\$390,000	\$273,000	
TOTAL	\$86,000	\$17,400		\$399,100	\$279,600	
Airport Operations (FAA)	2017	2016	Change	2017	2016	Change
Air Carrier + Commuter Carriers	2,992	1,923	55.6%	11,720	7,519	55.9%
Air Taxi + General Aviation	24,212	22,687	6.7%	86,111	92,436	-6.8%
Military Operations	152	160	-5.0%	479	579	-17.3%
Total Aircraft Operations	27,356	24,770	10.4%	98,310	100,534	-2.2%

Notes:

0.1% (31 of 27,356) of the Airport's total aircraft operations (Commercial & GA) resulted in an aircraft noise violation.

0.7% (21 of 2,992) the Airports Commercial operations (Commercial & Commuter) resulted in an aircraft noise violation.

AIRCRAFT NOISE VIOLATORS

April 2017

OWNERNAME	DATE	TIME	A/D	RWY	A/C TYPE	SEL	LIMIT	STATUS
Videotape Center	4/1/2017	0:27:56	A	30	BE36	89	79.0	VIO
JetBlue Airways Corporation	4/1/2017	2:54:22	A	30	A320	93	79.0	VIO + Alt Enf
JetBlue Airways Corporation	4/2/2017	23:14:25	D	30	A320	94	79.0	VIO + Alt Enf
JetBlue Airways Corporation	4/3/2017	23:07:52	A	30	A320	92	79.0	VIO + Alt Enf
JetBlue Airways Corporation	4/3/2017	23:21:30	D	30	A320	90	79.0	VIO + Alt Enf
JetBlue Airways Corporation	4/6/2017	0:36:15	A	30	A320	93	79.0	VIO + Alt Enf
JetBlue Airways Corporation	4/6/2017	23:08:16	A	30	A320	94	79.0	VIO + Alt Enf
JetBlue Airways Corporation	4/6/2017	23:14:14	D	30	A320	91	79.0	VIO + Alt Enf
JetBlue Airways Corporation	4/7/2017	1:29:46	D	30	A320	89	79.0	VIO + Alt Enf
JetBlue Airways Corporation	4/7/2017	22:17:33	A	30	A320	94	90.0	VIO
JetBlue Airways Corporation	4/7/2017	22:21:26	D	30	A320	95	90.0	VIO
JetBlue Airways Corporation	4/7/2017	22:54:46	D	30	A320	94	90.0	VIO
JetBlue Airways Corporation	4/7/2017	23:05:16	A	30	A320	94	79.0	VIO + Alt Enf
JetBlue Airways Corporation	4/7/2017	23:54:28	D	30	A320	92	79.0	VIO + Alt Enf
JetBlue Airways Corporation	4/8/2017	0:46:01	D	30	A320	95	79.0	VIO + Alt Enf
Latitude 33 Aviation LLC	4/9/2017	23:08:20	A	30	C25B	87	79.0	VIO
JetBlue Airways Corporation	4/11/2017	22:30:01	D	30	A320	95	90.0	VIO
JetBlue Airways Corporation	4/11/2017	23:08:11	A	30	A320	96	79.0	VIO + Alt Enf
JetBlue Airways Corporation	4/12/2017	23:13:11	A	25R	A320	95	n/a	VIO + Alt Enf
JetBlue Airways Corporation	4/13/2017	23:36:03	A	25R	A320	95	n/a	VIO + Alt Enf
JetBlue Airways Corporation	4/16/2017	0:15:46	D	30	A320	91	79.0	VIO + Alt Enf
Surf Airlines Inc.	4/17/2017	14:05:03	A	25R	PC12	91	88.0	VIO
Air Prestigio LLC	4/21/2017	23:11:37	A	30	GLF4	82	79.0	VIO
Dynamic Aircraft Consortium LLC	4/22/2017	0:20:52	A	30	SA226-T(B)	83	79.0	VIO
Swiflite Aircraft Corp	4/22/2017	23:31:46	D	30	GLF6	82	79.0	VIO
Private	4/23/2017	1:31:01	A	30	PA32	84	79.0	VIO
JetBlue Airways Corporation	4/25/2017	23:18:16	D	30	A320	96	79.0	VIO + Alt Enf

AIRCRAFT NOISE VIOLATORS

April 2017

OWNERNAME	DATE	TIME	A/D	RWY	A/C TYPE	SEL	LIMIT	STATUS
Aviation Consultants Inc	4/26/2017	23:09:10	A	30	BE36	84	79.0	VIO
MLW Aviation LLC	4/27/2017	23:32:34	D	30	B752	90	79.0	VIO
Costco Wholesale Corp.	4/28/2017	0:20:40	A	30	GLF5	89	79.0	VIO
JetBlue Airways Corporation	4/29/2017	23:21:52	A	30	A320	93	79.0	VIO + Alt Enf

DEFINITIONS:

A/C Type — Aircraft Type

A/D/G — Arrival / Departure / Ground Operation

ALT ENF — Alternative Enforcement

RWY — Runway

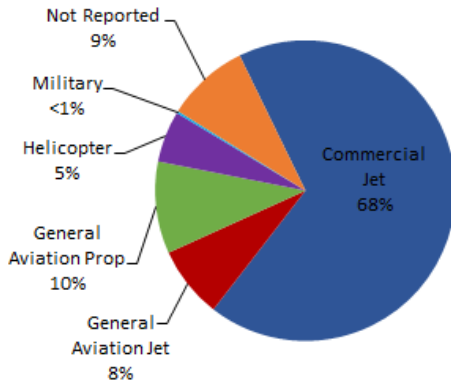
SEL — SENEL — Single Event Noise Exposure Level (dBA)

VIO — Violation

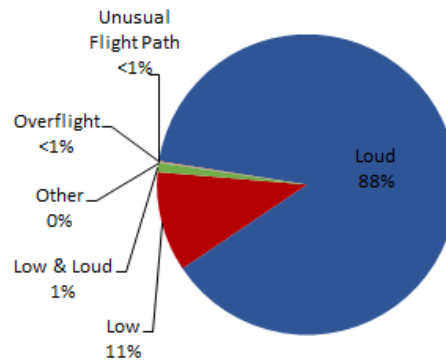
LGB AIRCRAFT NOISE COMPLAINTS

April 2017

Complaints by Aircraft Types



Complaints by Concern



Complaints by Zip Code¹

Zip Code	Complaints	Units
90278	2	1
90501	1	1
90630	1	1
90712	1	1
90713	4	1
90740	1	1
90755	5	3
90805	28	1
90807	43	21
90808	15	11
90814	1	1
90815	1	1
92612	47	1
92626	952	4
92648	292	4
92649	315	4
92677	8	4
Not Reported	2	2
Grand Total	1,719	63

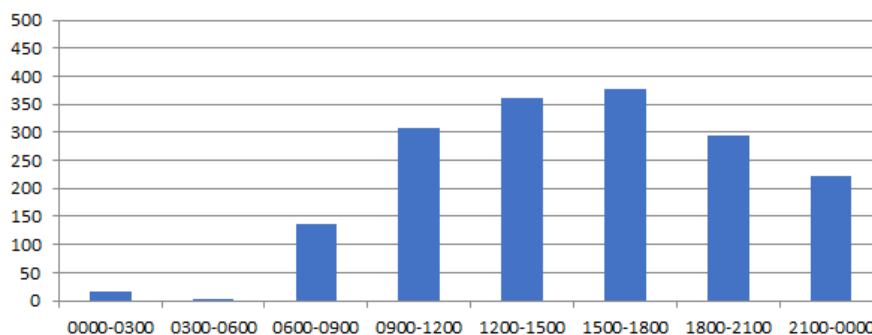
Long Beach Residents' Helicopter Complaints Submitted to FAA²

Zip Code	Individual Complaints	Number of Individuals	Anonymous Complaints	Total Complaints
90802	11	2	13	24
90803	263	11	86	349
90804	10	2	2	12
90805	0	n/a	5	5
90807	0	n/a	1	1
90808	0	n/a	22	22
90810	0	n/a	10	10
90814	341	9	40	381
Grand Total	625	24	179	804

¹ These data include data submitted directly to Long Beach Airport and does not include data submitted to FAA.

² These data reflect helicopter noise complaints submitted directly to FAA.

Complaints by Time





long beach airport



Long Beach Airport

4100 E. Donald Douglas Drive, Long Beach, CA 90808

www.lgb.org • lgbapt@longbeach.gov

Administration • (562) 570-2619