

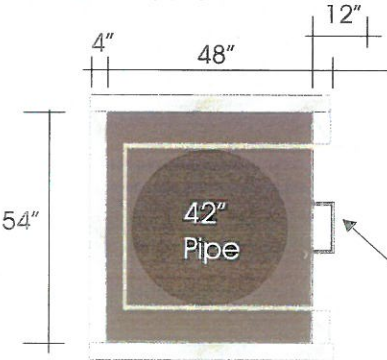
Fabricate pole cover for new billboard.

.100 aluminum skin with 1-1/2" x 1-1/2"
x 3/16" angle iron frame.
All steel to be primed.

Primary pole cover surround to have textured dark gray finish.
12" tall White painted band wraps all sides.
Outfront logo copy is routed out and backed with translucent
acrylic. Graphics are backlit with white LED's from inside.
Two 4" square brushed aluminum accents bands wrap all sides
of dark gray pole cover.

Outer accent fins that run vertically up the one side and
across the top are smooth finish painted light titanium gray.

Pole cover to be welded to pipe
at each section.

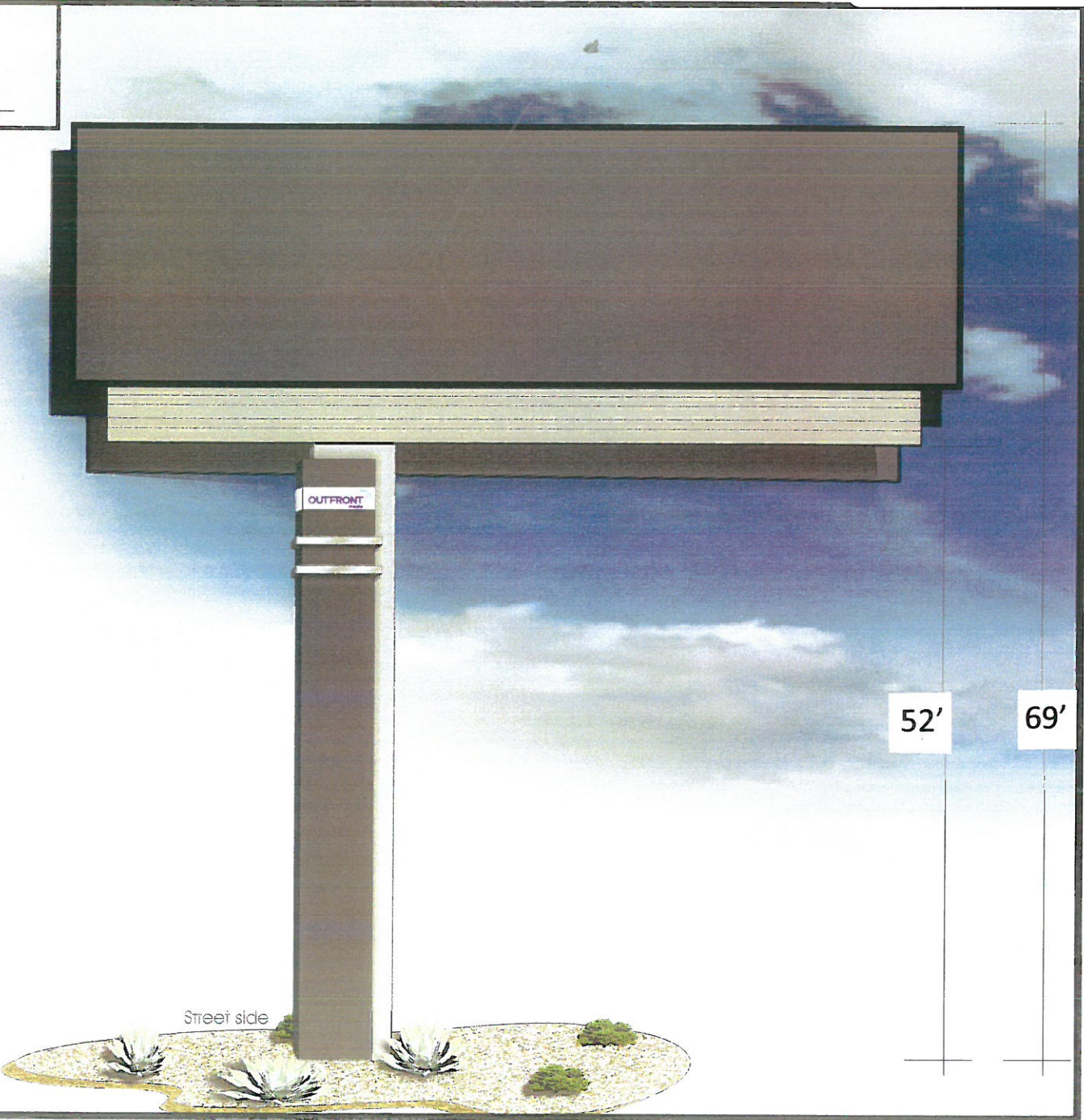


Approved Design

X _____



FRONT VIEW SHOWING
EXAMPLE OF APPROX. PLACEMENT
OF INTERNAL
FRAMING



EQUITY
SIGN GROUP
FULL SERVICE - DESIGN, MANUFACTURE, INSTALL

OUTFRONT
media
ADDRESS Santa Fe Springs, CA
DATE 11-9-15
DRAWING NUMBER Outfront-11-9-15