

# EXHIBIT D



The City of Long Beach

## Belmont Pool Story Pole Location Plan

Long Beach, California

Date: \_\_\_\_\_ Issue: \_\_\_\_\_



R o T o Architects, Inc.  
600 Moulton Ave #405  
Los Angeles  
California  
90031  
tel: 323.226.1112  
fax: 323.226.1105



601 South Figueroa Street  
Suite 500  
Los Angeles, California  
90017 | USA  
(tel) (213) 542 4500  
(fax) (213) 542 4515  
harleyellisdeveraux.com

Planning  
Architecture  
Engineering  
Interior Architecture  
Landscape Architecture  
Construction Services  
Copyright © 2013

Project No. 2014-00006  
Drawn \_\_\_\_\_  
Checked \_\_\_\_\_  
Approved \_\_\_\_\_

### STORY POLE LOCATION PLAN

Sheet No. SP-01

NOTE:  
PROVIDE 8' TALL TEMPORARY FENCING  
AROUND GUIDE WIRES AND STORY POLE  
  
STORY POLES AND GUIDE WIRES SHALL BE  
LOCATED WITHIN CITY'S JURISDICTION

STORY POLE  
GUIDEWIRES TO BE  
DETERMINED BY  
INSTALLER  
  
STORY POLE  
LOCATION

COASTAL COMMISSION  
PERMIT  
JURISDICTION

COASTAL COMMISSION PERMIT JURISDICTION

SURVEY INFORMATION PROVIDED BY GUIDA SURVEY DATED APRIL 15, 2014

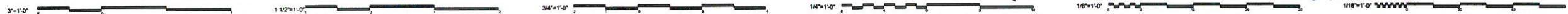
BENCHMARK:

VERTICAL DATUM NGVD29

CITY OF LONG BEACH BM 1710, BRASS DISC FLUSH WITH PAVEMENT STAMPED "CLB  
BM 1710, 1998" 16.0'W/CURB 1.1'N/CURB

1985 ELEV = 23.858 FEET NGVD29.

SCALE = 1/8"=1'-0"







The City of Long Beach

### Belmont Pool Story Pole Location Plan

Long Beach, California

Date Issue



R o T o Architects, Inc.  
600 Moulton Ave #405  
Los Angeles  
California  
90031  
tel: 323.226.1112  
fax: 323.226.1105



HARLEY ELLIS  
DEVEREAUX

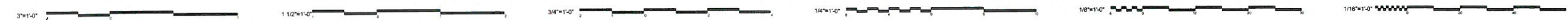
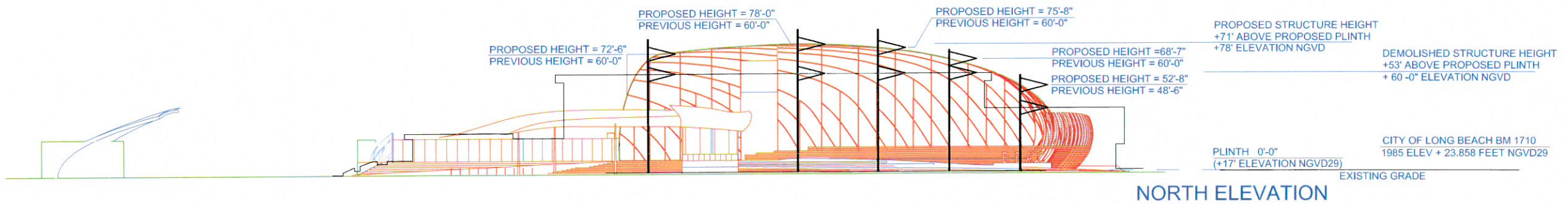
601 South Figueroa Street  
Suite 500  
Los Angeles, California  
90017 USA  
(tel) (213) 542-4500  
(fax) (213) 542-4515  
harleyellisdeveraux.com

Planning  
Architecture  
Engineering  
Interior Architecture  
Landscape Architecture  
Construction Services  
Copyright © 2013

Project No. 2014-00006  
Drawn  
Checked  
Approved

Title **Story Pole  
Heights**

Sheet No. **SP-02**



NOT TO SCALE