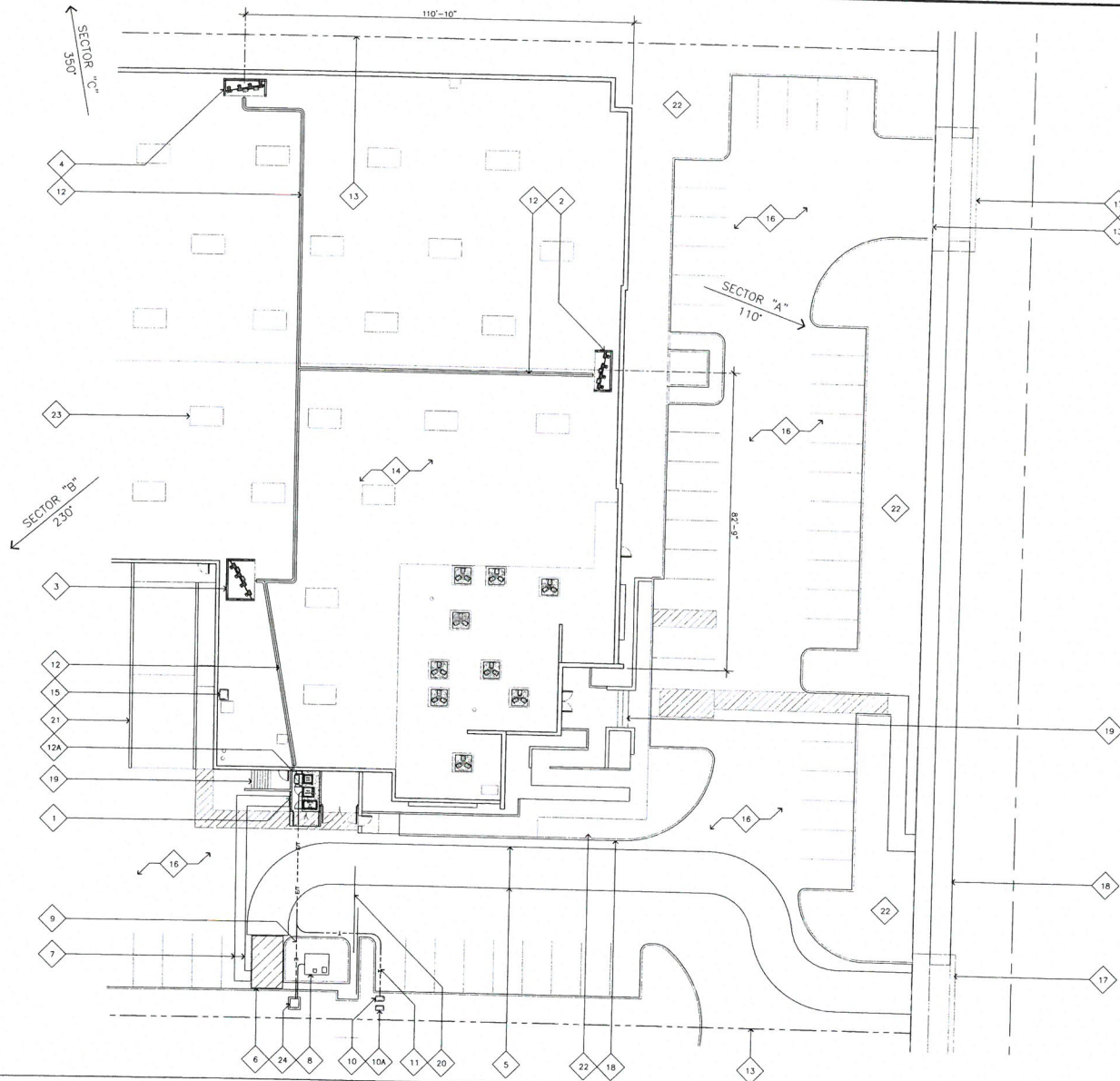


KEYNOTES

- 1 PROPOSED VZW 16'-0" X 8'-0" EQUIPMENT LEASE AREA ON GROUND LEVEL (128 SQ FT)
- 2 PROPOSED VZW 12'-0" X 5'-0" SECTOR A ANTENNA EQUIPMENT FRP SCREEN WALL ENCLOSURE (60 SQ FT)
- 3 PROPOSED VZW 12'-0" X 8'-0" SECTOR B ANTENNA EQUIPMENT FRP SCREEN WALL ENCLOSURE (96 SQ FT)
- 4 PROPOSED VZW 12'-0" X 5'-0" SECTOR C ANTENNA EQUIPMENT FRP SCREEN WALL ENCLOSURE (60 SQ FT)
- 5 PROPOSED VZW 12'-0" VEHICULAR WIDE PATH OF ACCESS FROM PUBLIC RIGHT OF WAY TO NON-EXCLUSIVE PARKING STALL IN EXISTING PARKING AREA
- 6 PROPOSED VZW NON-EXCLUSIVE PARKING STALL IN EXISTING PARKING AREA
- 7 PROPOSED VZW 3'-0" WIDE NON-EXCLUSIVE PEDESTRIAN PATH OF ACCESS
- 8 PROPOSED POWER POINT OF CONNECTION AT EXISTING SCE TRANSFORMER
- 9 PROPOSED UNDERGROUND POWER CONDUIT FROM EXISTING SCE TRANSFORMER TO PROPOSED VZW EQUIPMENT LEASE AREA ON GROUND LEVEL (APPROX. 55'-0")
- 10 PROPOSED FIBER POINT OF CONNECTION AT EXISTING VZW UNDERGROUND VAULT
- 10A PROPOSED VZW MMH9L
- 11 PROPOSED UNDERGROUND TELCO CONDUIT FROM EXISTING VZW UNDERGROUND VAULT TO PROPOSED VZW EQUIPMENT LEASE AREA ON GROUND LEVEL (APPROX. 90'-0")
- 12 PROPOSED VZW POWER AND FIBER CONDUIT RUN ROUTED ON EXISTING ROOF INSIDE PROPOSED CABLE TRAY. PAINT AND TEXTURE PROPOSED CABLE TRAY TO MATCH ADJACENT SURFACE.
- 12A PROPOSED VZW HYPERFLEX CABLES ROUTED UP SIDE OF EXISTING BUILDING TO EXISTING ROOF ABOVE IN PROPOSED CABLE TRAY. PAINT AND TEXTURE CABLE TRAY TO MATCH ADJACENT SURFACE.
- 13 EXISTING PROPERTY LINE
- 14 ROOFTOP OF EXISTING BUILDING
- 15 EXISTING ACCESS HATCH
- 16 EXISTING PARKING AREA
- 17 EXISTING DRIVEWAY
- 18 EXISTING CONCRETE CURB AND SIDEWALK
- 19 EXISTING STAIRS
- 20 EXISTING WROUGHT IRON ACCESS GATE
- 21 EXISTING LOADING RAMP
- 22 EXISTING LANDSCAPING
- 23 EXISTING SKYLIGHT, TYP.
- 24 PROPOSED VZW STEP DOWN TRANSFORMER

NOTES

1. THE UTILITY ROUTES SHOWN ARE CONCEPTUAL AND ARE SUBJECT TO CHANGE DUE TO FIELD CONDITIONS AND/OR DESIGN CHANGES REQUESTED BY THE UTILITY SERVICE PROVIDER OR CONSTRUCTION TEAM.



ENLARGED SITE PLAN

SCALE:
1/16"=1'-0"

0 4' 8' 16'

1

ISSUE STATUS

REV.	DATE	DESCRIPTION	BY
0	10/23/15	PRELIMINARY 2D REVIEW	JXX
1	11/09/15	100% ZONING	JXX
2	05/02/16	PLANNING REVISIONS	AM

Jeffrey Rome Associates
architecture | telecommunications
131 Innovation Drive, Suite 100
Irvine, California 92617
tel 949.760.3929 | fax 949.760.3931

PROPRIETARY INFORMATION
THE INFORMATION CONTAINED IN THIS SET OF DRAWINGS IS PROPRIETARY & CONFIDENTIAL TO VERIZON WIRELESS.
ANY USE OR DISCLOSURE OTHER THAN AS IT RELATES TO VERIZON WIRELESS IS STRICTLY PROHIBITED.

verizon
15505 SAND CANYON AVENUE, D1
IRVINE, CA 92618



COVER STREET
3851 SCHAUFEELE AVENUE
LONG BEACH, CALIFORNIA 90808

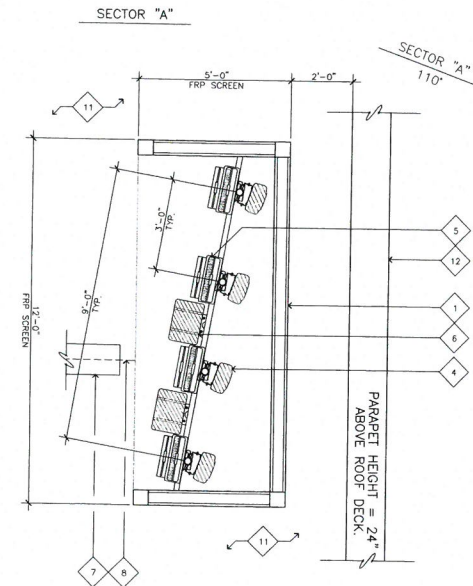
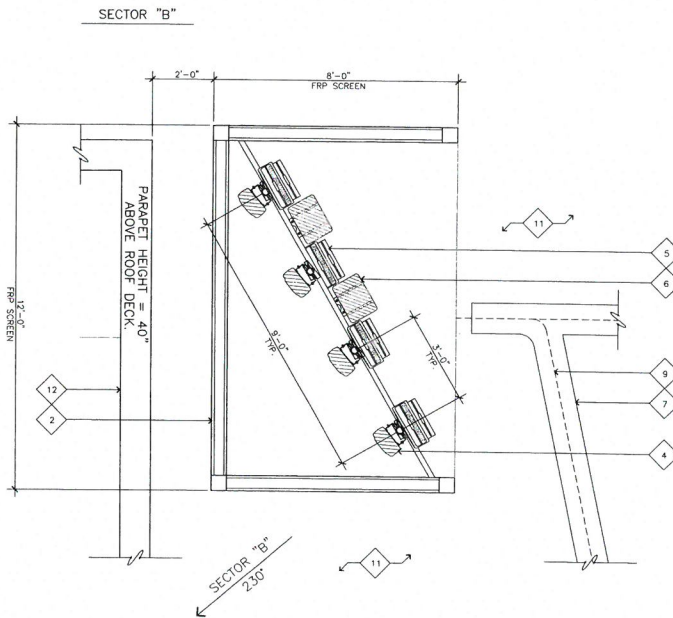
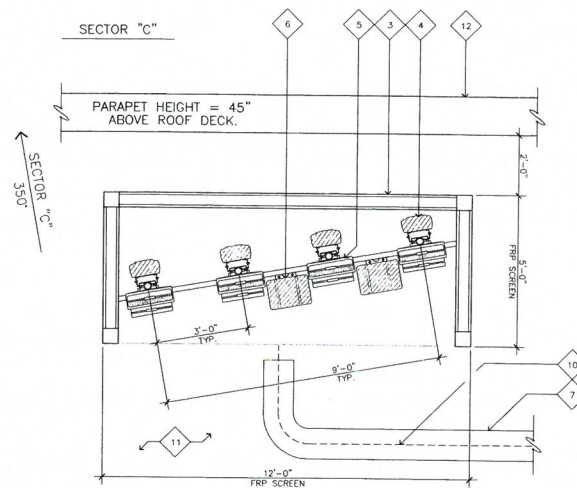
SHEET TITLE:
ENLARGED SITE PLAN

A-1

204 JOB NUMBER: 152616

KEYNOTES

- 1 PROPOSED VZW 12'-0" X 5'-0" SECTOR A ANTENNA EQUIPMENT FRP SCREEN WALL ENCLOSURE (60 SQ FT).
- 2 PROPOSED VZW 12'-0" X 8'-0" SECTOR B ANTENNA EQUIPMENT FRP SCREEN WALL ENCLOSURE (96 SQ FT).
- 3 PROPOSED VZW 12'-0" X 5'-0" SECTOR C ANTENNA EQUIPMENT FRP SCREEN WALL ENCLOSURE (60 SQ FT).
- 4 PROPOSED VZW 8'-0" PANEL ANTENNAS, TYP. (4) PER SECTOR, (12) TOTAL, MOUNTED BEHIND PROPOSED FRP SCREEN WALL.
- 5 PROPOSED VZW RRU'S WITH A2 MODULES, TYP. (4) PER SECTOR, (12) TOTAL, MOUNTED BEHIND PROPOSED VZW 8'-0" PANEL ANTENNAS.
- 6 PROPOSED VZW RAYCAP SURGE SUPPRESSORS, TYP. (2) PER SECTOR (6) TOTAL, MOUNTED BEHIND PROPOSED VZW 8'-0" PANEL ANTENNAS.
- 7 PROPOSED VZW POWER AND FIBER CONDUIT RUN ROUTED ON EXISTING ROOF INSIDE PROPOSED CABLE TRAY, PAINT AND TEXTURE PROPOSED CABLE TRAY TO MATCH ADJACENT SURFACE.
- 8 PROPOSED VZW HYBRID CABLE FROM PROPOSED VZW EQUIPMENT AT GROUND LEVEL TO PROPOSED VZW PANEL ANTENNAS AT SECTOR A (APPROX. 295'-0").
- 9 PROPOSED VZW HYBRID CABLE FROM PROPOSED VZW EQUIPMENT AT GROUND LEVEL TO PROPOSED VZW PANEL ANTENNAS AT SECTOR B (APPROX. 135'-0").
- 10 PROPOSED VZW HYBRID CABLE FROM PROPOSED VZW EQUIPMENT AT GROUND LEVEL TO PROPOSED VZW PANEL ANTENNAS AT SECTOR C (APPROX. 275'-0").
- 11 EXISTING BUILDING ROOFTOP.
- 12 EXISTING PARAPET.



ANTENNA / CABLE SCHEDULE

SECTOR	QUANTITY	SIZE	AZIMUTH	RAD CENTER OF ANTENNA	CABLES	EST. LENGTH	TX/RX
ALPHA	4	8'-0"	110°	46'-0"	1 5/8" / HYBRID	295'-0"	TBD
BETA	4	8'-0"	230°	46'-0"	1 5/8" / HYBRID	135'-0"	TBD
GAMMA	4	8'-0"	350°	46'-0"	1 5/8" / HYBRID	275'-0"	TBD

ISSUE STATUS

REV.	DATE	DESCRIPTION	BY
0	10/23/15	PRELIMINARY 2D REVIEW	JK
1	11/09/15	100% ZONING	JK
2	05/02/16	PLANNING REVISIONS	AM

Jeffrey Rome Associates
Architecture | telecommunications

1311 Innovation Drive, Suite 100
Irvine, California 92617
tel 949.760.3929 | fax 949.760.3931

PROPRIETARY INFORMATION

THE INFORMATION CONTAINED IN THIS SET OF DRAWINGS IS PROPRIETARY & CONFIDENTIAL TO VERIZON WIRELESS.

ANY USE OR DISCLOSURE OTHER THAN AS IT RELATES TO VERIZON WIRELESS IS STRICTLY PROHIBITED.

verizon

15505 SAND CANYON AVENUE, D1
IRVINE, CA 92618



COVER STREET

3851 SCHAUFEL AVENUE
LONG BEACH, CALIFORNIA 90808

SHEET TITLE:
**ENLARGED ANTENNA
LAYOUT PLAN & ANTENNA
SCHEDULE SPECIFICATIONS**

A-1.2

ENLARGED ANTENNA LAYOUT PLANS AND ANTENNA SCHEDULE SPECIFICATIONS

SCALE:
1/2"=1'-0"



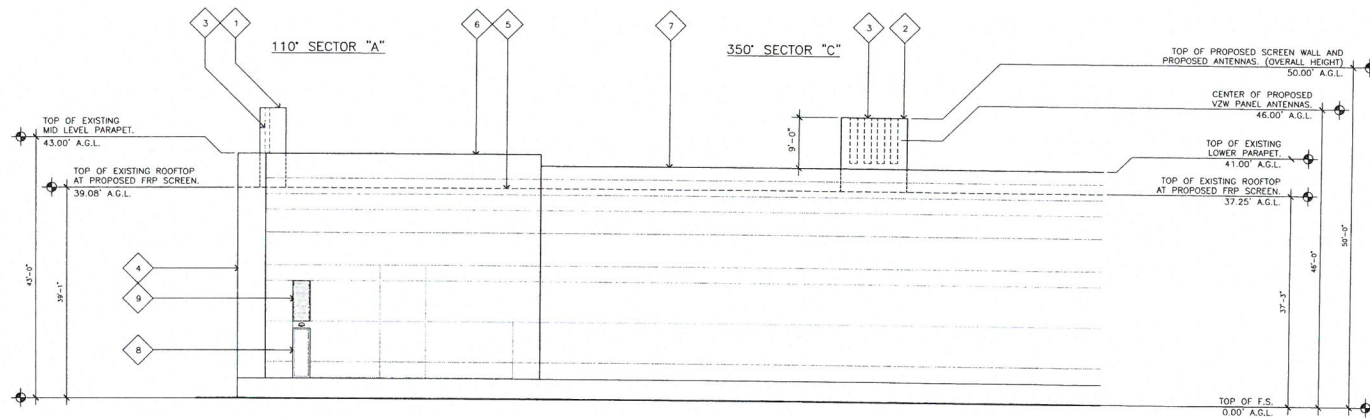
1

KEYNOTES

1. PROPOSED VZW 12'-0" X 8'-0" SECTOR A ANTENNA EQUIPMENT FRP SCREEN WALL ENCLOSURE (60 SQ FT).
2. PROPOSED VZW 12'-0" X 8'-0" SECTOR C ANTENNA EQUIPMENT FRP SCREEN WALL ENCLOSURE (60 SQ FT).
3. PROPOSED VZW 8'-0" PANEL ANTENNAS, TYP. (4) PER SECTOR, (12) TOTAL, MOUNTED BEHIND PROPOSED FRP SCREEN WALL.
4. EXISTING BUILDING.
5. EXISTING BUILDING ROOFTOP.
6. EXISTING MID LEVEL PARAPET.
7. EXISTING LOWER PARAPET.
8. EXISTING ACCESS DOOR.
9. EXISTING LOUVERED VENTS.

NOTES

1. PROPOSED VZW RRU'S WITH A2 MODULES AND RAYCAPS NOT SHOWN FOR CLARITY, SEE DETAIL 1/A-1.1.



NORTH ELEVATION

SCALE:

3/32"=1'-0"



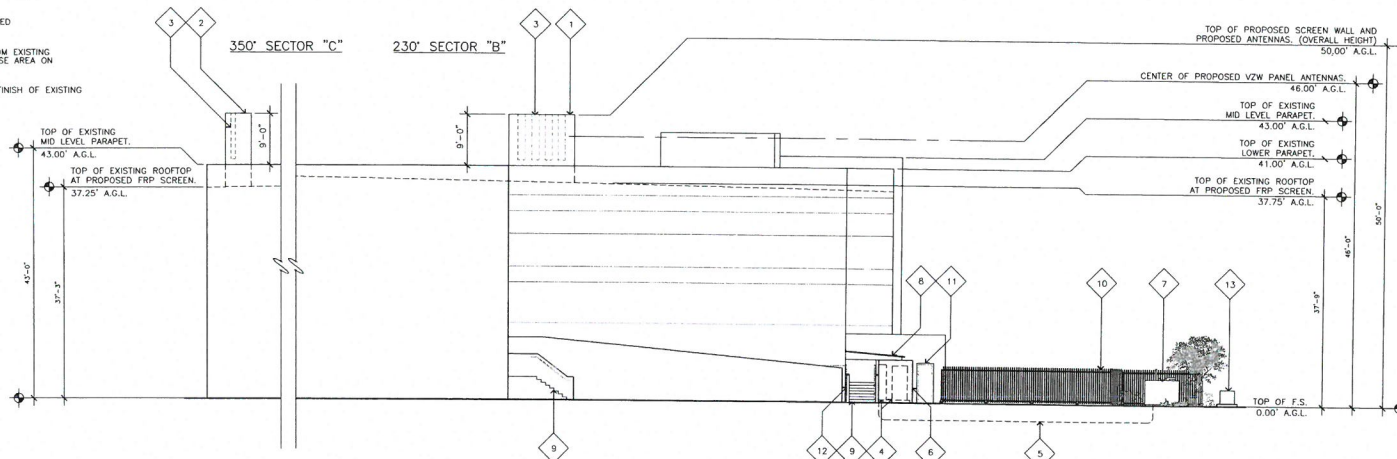
2

KEYNOTES

1. PROPOSED VZW 12'-0" X 8'-0" SECTOR B ANTENNA EQUIPMENT FRP SCREEN WALL ENCLOSURE (96 SQ FT).
2. PROPOSED VZW 12'-0" X 8'-0" SECTOR C ANTENNA EQUIPMENT FRP SCREEN WALL ENCLOSURE (60 SQ FT).
3. PROPOSED VZW 8'-0" PANEL ANTENNAS, TYP. (4) PER SECTOR, (12) TOTAL, MOUNTED BEHIND PROPOSED FRP SCREEN WALL.
4. PROPOSED VZW EQUIPMENT CABINETS MOUNTED ON PROPOSED CONCRETE PAD.
5. PROPOSED UNDERGROUND POWER AND FIBER CONDUITS FROM EXISTING POINT OF CONNECTIONS TO PROPOSED VZW EQUIPMENT LEASE AREA ON GROUND LEVEL.
6. PROPOSED EQUIPMENT ENCLOSURE TO MATCH HEIGHT AND FINISH OF EXISTING TRASH ENCLOSURE.
7. PROPOSED POWER POINT OF CONNECTION AT EXISTING SCE TRANSFORMER.
8. EXISTING TRASH BIN ENCLOSURE BEYOND.
9. EXISTING STEPS.
10. EXISTING WROUGHT IRON ACCESS GATE.
11. EXISTING PEDESTRIAN ACCESS GATE.
12. EXISTING BOLLARDS, TYP.
13. PROPOSED VZW STEP DOWN TRANSFORMER.

NOTES

1. THE UTILITY ROUTES SHOWN ARE CONCEPTUAL AND ARE SUBJECT TO CHANGE DUE TO FIELD CONDITIONS AND/OR DESIGN CHANGES REQUESTED BY THE UTILITY SERVICE PROVIDER OR CONSTRUCTION TEAM.
2. PROPOSED VZW RRU'S WITH A2 MODULES AND RAYCAPS NOT SHOWN FOR CLARITY, SEE DETAIL 1/A-1.1.



WEST ELEVATION

SCALE:

3/32"=1'-0"



1

ISSUE STATUS

REV.	DATE	DESCRIPTION	BY
0	10/23/15	PRELIMINARY 2D REVIEW	XX
1	11/09/15	100% ZONING	XX
2	05/02/16	PLANNING REVISIONS	AM

Jeffrey Rome Associates
architecture | telecommunications

131 Innovation Drive, Suite 100
Irvine, California 92617
Tel 949.760.3929 | Fax 949.760.3931

PROPRIETARY INFORMATION
THE INFORMATION CONTAINED IN THIS SET OF DRAWINGS IS PROPRIETARY & CONFIDENTIAL TO VERIZON WIRELESS.

ANY USE OR DISCLOSURE OTHER THAN AS IT RELATES TO VERIZON WIRELESS IS STRICTLY PROHIBITED.

verizon

15505 SAND CANYON AVENUE, D1
IRVINE, CA 92618



COVER STREET
3851 SCHAUFLE AVENUE
LONG BEACH, CALIFORNIA 90808

SHEET TITLE:
ELEVATIONS

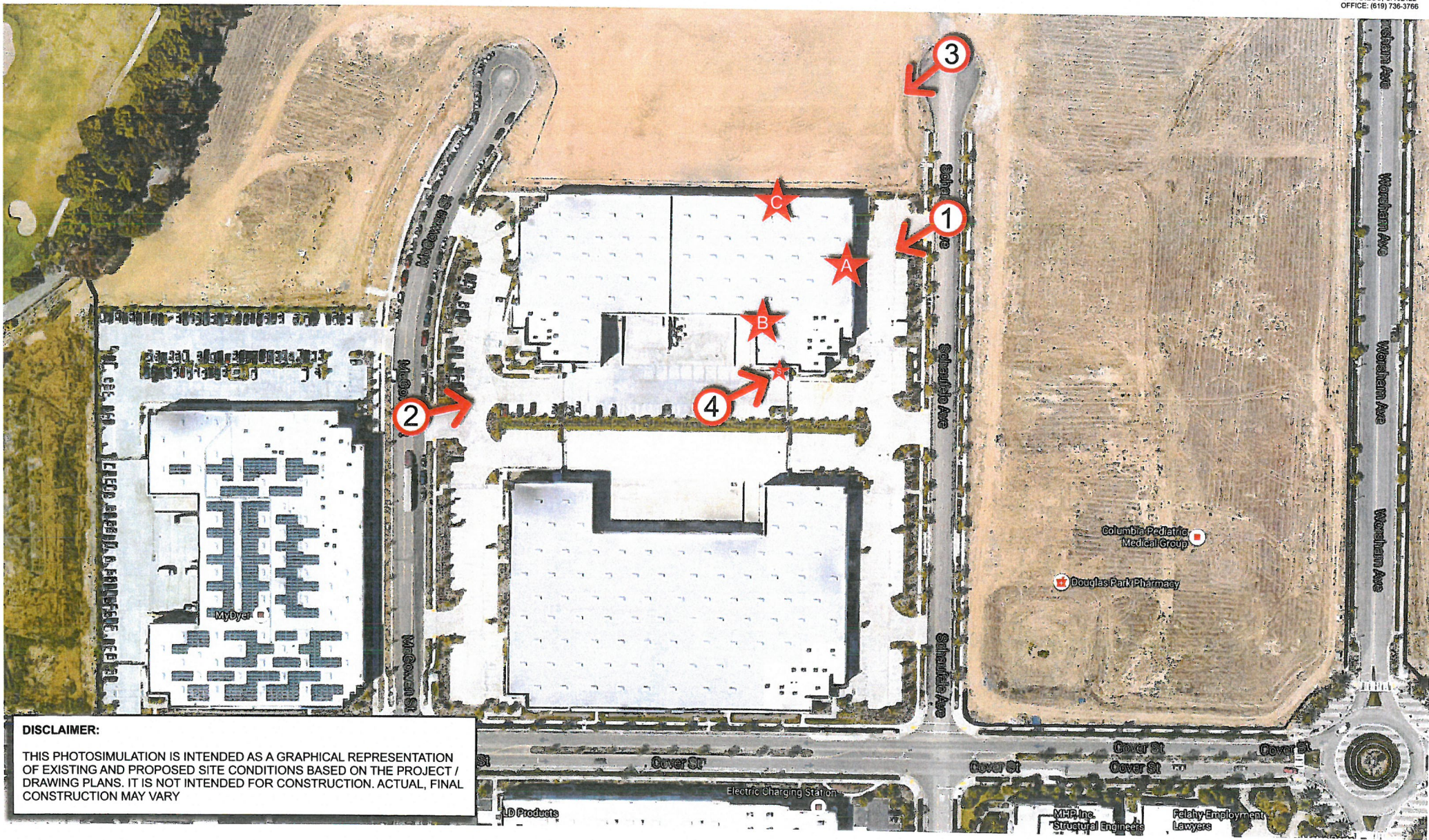
A-2.1

VICINITY MAP
PHOTOSIMULATION VIEWPOINTS



COVER STREET
MTX43 / BSC9
MCE
3851 SCHAUFEE AVENUE
LONG BEACH, CALIFORNIA 90808

SC
WIRELESS
5015 SHOREHAM PLACE, SUITE 11
SAN DIEGO, CA 92122
OFFICE: (619) 736-3766



DISCLAIMER:
THIS PHOTOSIMULATION IS INTENDED AS A GRAPHICAL REPRESENTATION OF EXISTING AND PROPOSED SITE CONDITIONS BASED ON THE PROJECT / DRAWING PLANS. IT IS NOT INTENDED FOR CONSTRUCTION. ACTUAL, FINAL CONSTRUCTION MAY VARY

PHOTOSIMULATION VIEWPOINT 1

EXISTING



NEW



PHOTOSIMULATION VIEWPOINT 2

EXISTING



NEW



PHOTOSIMULATION VIEWPOINT 3

EXISTING



NEW



PHOTOSIMULATION VIEWPOINT 4

EXISTING



NEW

