

Airport Advisory Commission

Hal Gosling
Chair

Gerald Mineghino
Vice Chair

Jeffrey Anderson

Christopher A. Coronado

Elizabeth Cruz

Glenn Ray

Jeff Rowe

Roland B. Scott, Jr.

Karen Sherman

Airport Management

Bryant L. Francis
Airport Director

Ken Mason
Executive Assistant

Carolyn Carlton-Lowe
Operations & Facilities
Bureau Manager

Claudia Lewis
Manager of Administration
& Finance

Dale Worsham
Administrative Officer

Fred Pena
Facilities Management Officer

Karl Zittel
Airside Operations Officer

Drew Schneider
Manager of Airport Security

Kerry Gerot
Public Affairs Officer

Ron Reeves
Noise & Environmental Affairs Officer



**LONG BEACH
AIRPORT**

Building a Better Way to Fly



Long Beach Airport Monthly Noise Report October 2014

COMMERCIAL AIRCRAFT LATE NIGHT ACTIVITY
LGB Current Month & Calendar Year-To-Date Statistics (10 PM- 7AM)
October 2014

#				CY-T-D 2014		
October						
10PM - 11PM Activity	2014	2013	Change	2014	2013	Change
Air Carrier & Commuter Operations	2,174	2,289	-5.0%	22,838	23,485	-2.8%
Alaska/Horizon	0	0		1	0	100%
Allegiant	0	0		0	0	
Delta/Skywest	0	1	-100.0%	17	9	88.9%
FedEx	0	0		0	0	
Frontier	0	0		0	0	
JetBlue Airways	10	8	25.0%	142	160	-11.3%
UPS	0	0		1	0	100.0%
US Airways	1	0	100.0%	7	4	75.0%
Subtotal 10PM-11PM	11	9	22.2%	168	173	-2.9%
11PM- 7AM Activity	2014	2013	Change	2014	2013	Change
Alaska/Horizon	0	0		0	0	
Allegiant	0	0		0	0	
Delta/Skywest	0	2	-100.0%	4	3	33.3%
FedEx	0	0		0	0	
Frontier	0	0		0	0	
JetBlue	1	2	-50.0%	58	67	-13.4%
UPS	0	0		0	0	
US Airways	0	0		5	5	0.0%
Subtotal 11PM-7AM	1	4	-75.0%	67	75	-10.7%
TOTAL	12	13	-7.7%	235	248	-5.2%

Notes:

0.5% (12 of 2,174) of total commercial operations occurred between 10pm - 7am.

0.4 flights - Nightly average for all late night (10:00 PM—7:00 AM) commercial flights, includes unanticipated delays.

0.03 flights - Nightly average for commercial flights after 11 PM.

AIRPORT OPERATIONS & AIRCRAFT NOISE VIOLATIONS

LGB Current Month & Calendar Year-To-Date Statistics

October 2014

October				CY-T-D 2014		
Air Carrier Noise Violations	2014	2013	Change	2014	2013	Change
Alaska/Horizon	0	0		0	0	
Allegiant	0	0		0	0	
Delta/Skywest	0	0		3	0	300.0%
FedEx	0	0		0	0	
JetBlue	1	2	-50.0%	77	93	-17.2
UPS	0	0		0	1	-100.0%
US Airways	0	0		2	2	0.0%
Subtotal	1	2	-50.0	82	96	-14.6%
Commuter Noise Violations	2014	2013	Change	2014	2013	Change
Alaska/Horizon	0	0		0	0	
Delta/Skywest	0	1	-100.0%	0	2	-100.0%
US Airways	0	0		0	0	
Subtotal	0	1	-100%	0	2	-100.0%
Non-Commercial Noise Violations	2014	2013	Change	2014	2013	Change
All GA, Charter & Other	7	13	-46.2%	157	124	26.6%
TOTAL	8	16	-50.0%	239	222	7.7%
Monetary Fines						
LBMC 16.43.090E Airport Surcharges	\$700	\$1,300		\$17,300	\$17,500	
LBMC 16.43.100 JBU Consent Decree	\$3,000	\$6,000		\$252,000	\$285,000	
TOTAL	\$3,700	\$7,300		\$269,300	\$302,500	
Airport Operations (FAA)	2014	2013	Change	2014	2013	Change
Air Carrier + Commuter Carriers	2,174	2,289	-5.0%	22,838	23,485	-2.8%
Air Taxi + General Aviation	26,460	23,313	13.5%	257,715	220,892	16.7%
Military Operations	66	69	-4.3%	1,197	985	21.5%
Total Aircraft Operations	28,700	25,671	11.8%	281,750	245,362	14.8%

Notes:

0.03% (8 of 28,700) of the Airport's total aircraft operations (Commercial & GA) resulted in an aircraft noise violation.

0.05% (1 of 2,174) the Airports Commercial operations (Commercial & Commuter) resulted in an aircraft noise violation.

AIRCRAFT NOISE VIOLATORS

October 2014

OWNER NAME	DATE	TIME	A/D	RWY	A/C TYPE	NMTID	SEL	LIMIT	STATUS
JetBlue Airways Corporation	10/03/14	0:15:04	A	30	A320	10	93.7	79.0	ALT ENF & VIO
Latitude 33 Aviation LLC C/O Essca (Hong Kong) Limited	10/05/14	1:03:40	A	30	C525	10	86.8	79.0	VIOLATION
Latitude 33 Aviation LLC C/O Essca (Hong Kong) Limited	10/05/14	1:14:42	A	30	C525	10	86.6	79.0	VIOLATION TC
Cinema Aircraft Executive Transportation LLC	10/11/14	6:42:21	A	30	GLF4	10	92.4	90.0	VIOLATION
Interstate Equipment Leasing DBA Swift Air LLC	10/18/14	23:18:20	A	30	B737	10	96.5	79.0	VIOLATION
Blue Jackets Air LLC	10/24/14	0:13:50	A	30	DC9	10	98.3	79.0	VIOLATION
Long Beach Flying Club	10/26/14	0:24:43	A	30	PA28	10	86.5	79.0	VIOLATION
Kalitta Charter II	10/26/14	23:21:48	D	30	DC9	9	98.3	79.0	VIOLATION
Pegasus Elite Aviation LLC	10/30/14	23:21:13	A	30	GLF4	10	89.4	79.0	VIOLATION

DEFINITIONS:

A/D/G — Arrival / Departure / Ground Operation

RWY — Runway

A/C Type — Aircraft Type

SEL — SENEL — Single Event Noise Exposure Level (dBA)

ALT ENF — Alternative Enforcement

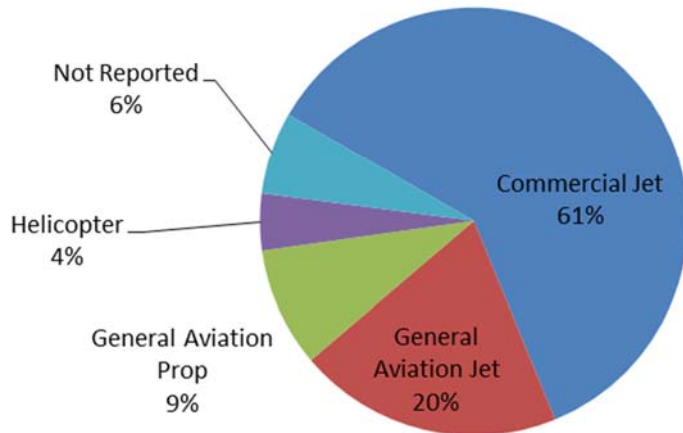
NMTID — Noise Monitor

VIO — Violation

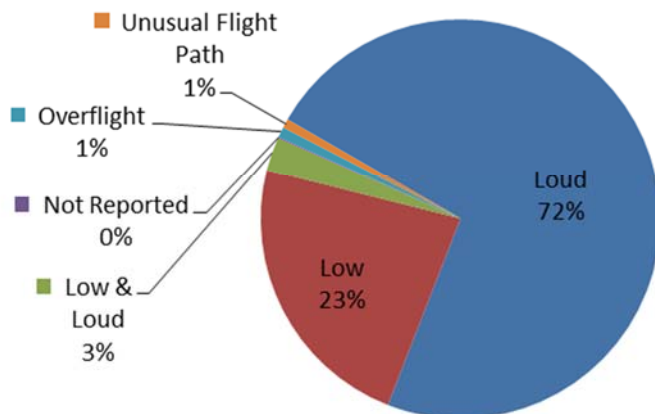
LGB AIRCRAFT NOISE COMPLAINTS

October 2014

Complaints by Aircraft Type



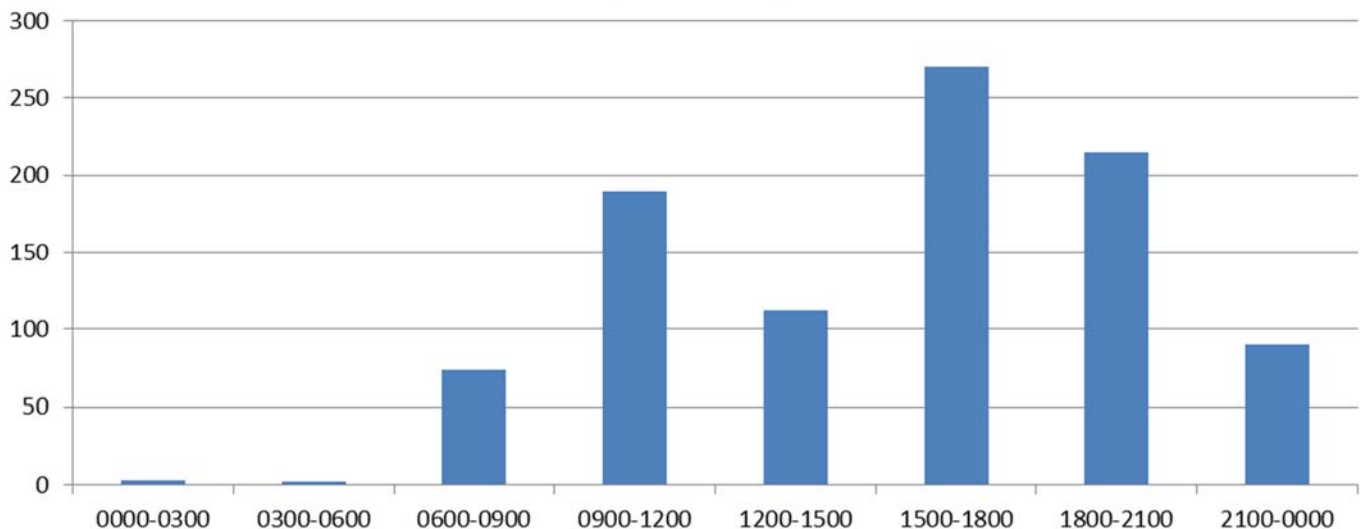
Complaints by Concern



Complaints By Zip Code

Code	Complaints	Units
90501	3	1
90712	3	1
90740	2	2
90755	72	2
90803	5	2
90807	12	7
90808	28	2
90815	3	3
92612	41	3
92626	179	1
92646	535	2
92648	4	1
92649	17	2
92869	5	1
Not Reported	47	11
Grand Total	956	41

Complaints by Time





LONG BEACH AIRPORT

Building a Better Way to Fly



Long Beach Airport

4100 E. Donald Douglas Drive, Long Beach, CA 90808

www.lgb.org • lgbapt@longbeach.gov

Administration • (562) 570-2619