



CITY OF LONG BEACH

DEPARTMENT OF PARKS, RECREATION & MARINE

2760 N. Studebaker Road, Long Beach, CA 90815-1697
(562) 570-3100 • FAX (562) 570-3109
www.LBParks.org

3



selected
best in the nation

January 15, 2015

MEMBERS OF THE PARKS AND RECREATION COMMISSION
City of Long Beach
California

RECOMMENDATION:

Approve the proposed expansion of the off-leash El Dorado Dog Park to allow enhanced maintenance procedures without disruption to use. (District 5)

DISCUSSION

On July 11, 2013, the Parks and Recreation Commission (Commission) approved the creation of the off-leash El Dorado Dog Park (EDDP) in the southeast corner of El Dorado East Regional Park, Area II (Southeast Corner). The EDDP consists of approximately 0.4 acres for a small dog park and approximately 1.1 acres for a large dog park, fencing including a double-entry gate, a concrete entry and access pad that meet American's with Disabilities Act (ADA) Guidelines, and a drinking fountain.

The current Grounds Maintenance Contract provides weekly mowing, trash collection and irrigation repairs, but extensive long-term maintenance practices like aeration, verticutting, over-seeding and topdressing cannot take place without closing an entire section of the EDDP. Staff proposes that approximately one acre of the Southeast Corner be identified as an expansion of EDDP that would be used to allow the existing small or large dog park areas to be closed for up to two months at a time to conduct extensive maintenance as described above. This new area will only be used during the maintenance of the existing areas and the access gate will be locked when not in use.

FISCAL IMPACT

Staff projects that to add approximately 427 feet of fence with a double entry gate, a cement access pad that meets ADA requirements, two benches with concrete pads and a dog bag dispenser to the Southeast Corner would cost approximately \$36,750. Once per year extensive maintenance practices would cost approximately \$6,300. A total of \$15,000 will be used from Council District 5 non-recurring infrastructure funds to build the proposed expansion. The remaining funds will come from existing City resources.

MEMBERS OF THE PARKS AND RECREATION COMMISSION

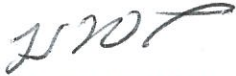
January 15, 2015

Page 2

SUGGESTED ACTION:

Approve the recommendation

Respectfully Submitted,



HURLEY OWENS
ACTING MANAGER
MAINTENANCE AND DEVELOPMENT

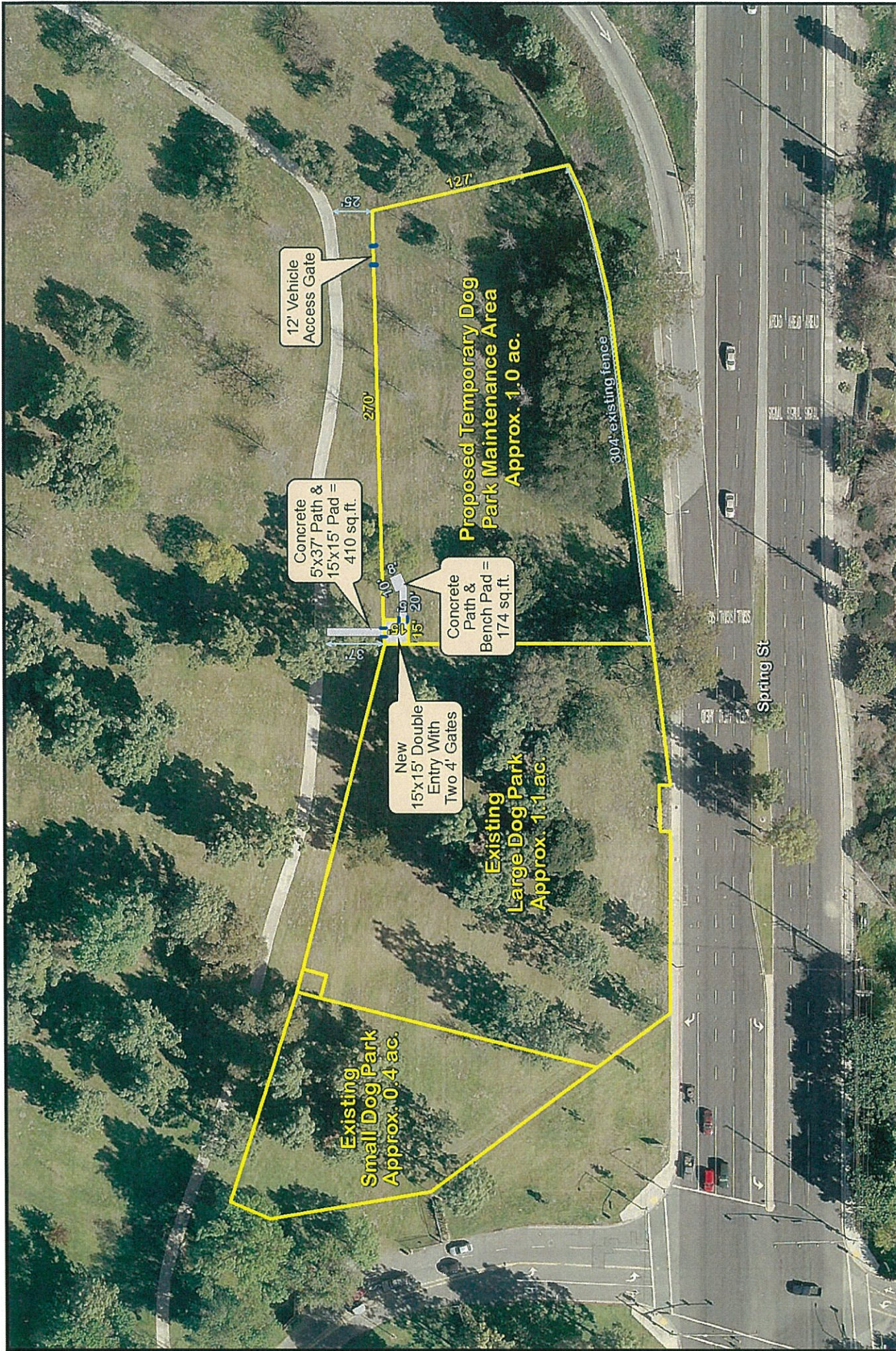
APPROVED:



GEORGE CHAPJIAN
DIRECTOR

GC:HO:rl

Att: Aerial showing Proposed El Dorado Dog Park Expansion Area for Maintenance



Proposed Temporary Dog Park Maintenance Area

El Dorado East Area II

Approximately 1.0 Additional Acre

Requires Approx. 427' of 5' Green Vinyl Fencing



0 20 40 60 80 100 Feet