

Airport Advisory Commission

Hal Gosling
Chair

Gerald Mineghino
Vice Chair

Christopher A. Coronado

Elizabeth Cruz

Glenn Ray

Jeff Rowe

Roland B. Scott, Jr.

Karen Sherman

Airport Management

Reginald I. Harrison
Acting Director

Ken Mason
Executive Assistant

Carolyn Carlton-Lowe
Operations & Facilities
Bureau Manager

Claudia Lewis
Manager of Administration
& Finance

Dale Worsham
Administrative Officer

Fred Pena
Facilities Management Officer

Karl Zittel
Airside Operations Officer

Drew Schneider
Manager of Airport Security

Kerry Gerot
Public Affairs Officer

Ron Reeves
Noise & Environmental Affairs Officer



**LONG BEACH
AIRPORT**

Building a Better Way to Fly



Long Beach Airport Monthly Noise Report September 2014

COMMERCIAL AIRCRAFT LATE NIGHT ACTIVITY
LGB Current Month & Calendar Year-To-Date Statistics (10 PM- 7AM)
September 2014

#				CY-T-D 2014		
September						
10PM - 11PM Activity	2014	2013	Change	2014	2013	Change
Air Carrier & Commuter Operations	2,594	2,289	13.3	18,612	21,196	-12.2%
Alaska/Horizon	0	0		1	0	100%
Allegiant	0	0		0	0	
Delta/Skywest	1	1	0.0%	17	8	112.5%
FedEx	0	0		0	0	
Frontier	0	0		0	0	
JetBlue Airways	6	21	-71.4	132	152	-13.2%
UPS	0	0		1	0	100.0%
US Airways	0	1	-100.0%	6	4	50.0%
Subtotal 10PM-11PM	7	23	69.6%	157	164	-4.3%
11PM- 7AM Activity	2014	2013	Change	2014	2013	Change
Alaska/Horizon	0	0		0	0	
Allegiant	0	0		0	0	
Delta/Skywest	0	0		4	1	300.0%
FedEx	0	0		0	0	
Frontier	0	0		0	0	
JetBlue	3	9	-66.7%	57	65	-12.3%
UPS	0	0		0	0	
US Airways	0	0		5	5	0.0%
Subtotal 11PM-7AM	3	9	-66.7%	66	71	-7.0%
TOTAL	10	32	-68.8%	223	235	-5.1%

Notes:

1.4% (37 of 2,594) of total commercial operations occurred between 10pm - 7am.

1.2 flights - Nightly average for all late night (10:00 PM—7:00 AM) commercial flights, includes unanticipated delays.

0.3 flights - Nightly average for commercial flights after 11 PM.

AIRPORT OPERATIONS & AIRCRAFT NOISE VIOLATIONS

LGB Current Month & Calendar Year-To-Date Statistics

September 2014

September				CY-T-D 2014		
Air Carrier Noise Violations	2014	2013	Change	2014	2013	Change
Alaska/Horizon	0	0		0	0	
Allegiant	0	0		0	0	
Delta/Skywest	0	0		3	0	300.0%
FedEx	0	0		0	0	
JetBlue	4	12	-66.7%	76	91	-16.5%
UPS	0	0		0	1	-100.0%
US Airways	0	0		2	2	0.0%
Subtotal	4	12	-66.7%	81	94	-13.8%
Commuter Noise Violations	2014	2013	Change	2014	2013	Change
Alaska/Horizon	0	0		0	0	
Delta/Skywest	0	0		0	1	-100.0%
US Airways	0	0		0	0	
Subtotal	0	0		0	1	-100.0%
Non-Commercial Noise Violations	2014	2013	Change	2014	2013	Change
All GA, Charter & Other	21	5	320.0%	150	111	35.1%
TOTAL	25	17	47.1%	231	206	12.1%
Monetary Fines						
LBMC 16.43.090E Airport Surcharges	\$1,500	\$1,500		\$17,300	\$17,500	
LBMC 16.43.100 JBU Consent Decree	\$18,000	\$42,000		\$252,000	\$285,000	
TOTAL	\$19,500	\$43,500		\$269,300	\$302,500	
Airport Operations (FAA)	2014	2013	Change	2014	2013	Change
Air Carrier + Commuter Carriers	2,594	2,289	13.3%	18,612	21,196	-12.2%
Air Taxi + General Aviation	25,844	23,313	10.9%	206,464	197,579	4.5%
Military Operations	154	69	123.2%	1,027	916	12.1%
Total Aircraft Operations	28,592	25,671	11.4%	226,103	219,691	2.9%

Notes:

0.08% (24 of 28,592) of the Airport's total aircraft operations (Commercial & GA) resulted in an aircraft noise violation.

0.4% (9 of 2,594) the Airports Commercial operations (Commercial & Commuter) resulted in an aircraft noise violation.

Special Note:

29% (25 of 85) of the JetBlue violations occurring CY-T-D 2014 are attributed to operations conducted between 10 PM - 11PM. These operations did not meet the criteria for Unanticipated Delay, and therefore a LBMC 16.43 violation of \$300 was issued for each occurrence.

AIRCRAFT NOISE VIOLATORS

September 2014

OWNER NAME	DATE	TIME	A/D	RWY	A/C TYPE	NMTID	SEL	LIMIT	STATUS
ATP Flight School	9/1/2014	12:18:52 AM	A	30	PA44	10	84	79.0	VIOLATION
Lowes Companies	9/1/2014	6:39:51 AM	D	30	F900	9	98.9	90.0	VIOLATION
Unknown	9/5/2014	12:40:15 AM	A	30	HELI	10	88.3	79.0	VIOLATION
ATP Flight School	9/5/2014	1:08:40 AM	A	30	PA44	10	83.7	79.0	VIOLATION
Private	9/5/2014	11:35:06 PM	A	30	PA32	10	81.5	79.0	VIOLATION
NetJets Inc.	9/7/2014	1:17:36 AM	D	30	GALX	9	91.3	79.0	VIOLATION
Unknown	9/8/2014	12:54:41 AM	A	30	2EP	10	88.2	79.0	VIOLATION
Kalitta Charter II	9/10/2014	11:56:47 PM	A	30	B727	10	98.4	79.0	VIOLATION
Crest Aviation II LLC	9/11/2014	12:16:28 AM	D	30	GLF4	9	84.5	79.0	VIOLATION
Kalitta Charter II	9/11/2014	2:04:18 AM	D	30	B727	9	96.4	79.0	VIOLATION
Maple Holdings LLC	9/12/2014	1:03:34 AM	A	30	H25B	10	91.1	79.0	VIOLATION
Pacific Contractors LLC	9/12/2014	3:28:00 AM	D	30	C172	9	83.8	79.0	VIOLATION
NetJets Inc.	9/13/2014	12:35:01 AM	A	30	C680	10	85.7	79.0	VIOLATION
JetBlue Airways Corporation	9/18/2014	10:56:47 PM	D	30	A320	9	92.9	90.0	VIOLATION
JetBlue Airways Corporation	9/18/2014	11:06:58 PM	D	30	A320	9	92.3	79.0	ALT ENF & VIO
JetBlue Airways Corporation	9/18/2014	11:59:03 PM	A	30	A320	10	94.5	79.0	ALT ENF & VIO
Paradigm Air Carriers Inc.	9/19/2014	12:28:46 AM	D	30	B757	9	91.8	79.0	VIOLATION
JetBlue Airways Corporation	9/19/2014	3:40:52 AM	A	30	A320	10	91	79.0	ALT ENF & VIO
Unknown	9/22/2014	1:50:08 AM	D	30	GLF5	9	84.9	79.0	VIOLATION
Triad Aviation LLC	9/25/2014	6:21:26 AM	D	30	BE40	9	92.1	90.0	VIOLATION
Unknown	9/27/2014	12:16:49 AM	A	30	HELI	10	93.8	79.0	VIOLATION
Unknown	9/27/2014	12:58:43 AM	D	30	WW24	9	91.9	79.0	VIOLATION
Long Beach Flying Club	9/28/2014	12:25:48 AM	A	30	PA44	10	89.6	79.0	VIOLATION
Meruelo Group LLC	9/30/2014	12:06:08 AM	A	30	GLF5	10	88.3	79.0	VIOLATION

DEFINITIONS:

A/D/G — Arrival / Departure / Ground Operation

RWY — Runway

A/C Type — Aircraft Type

SEL — SENEL — Single Event Noise Exposure Level (dBA)

ALT ENF — Alternative Enforcement

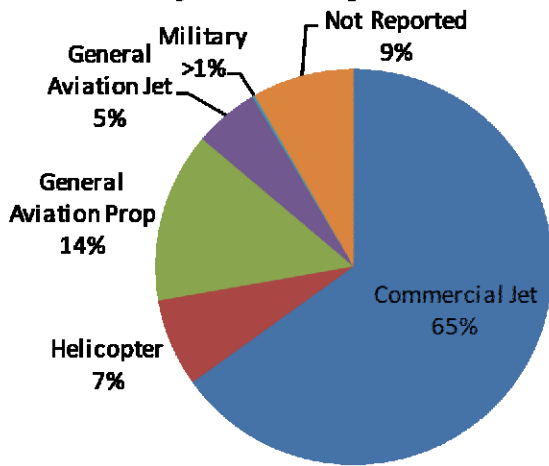
NMTID — Noise Monitor

VIO — Violation

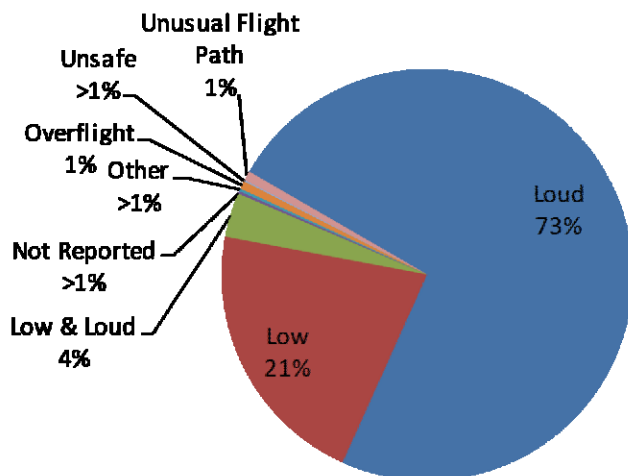
LGB AIRCRAFT NOISE COMPLAINTS

September 2014

Complaints by Aircraft Type



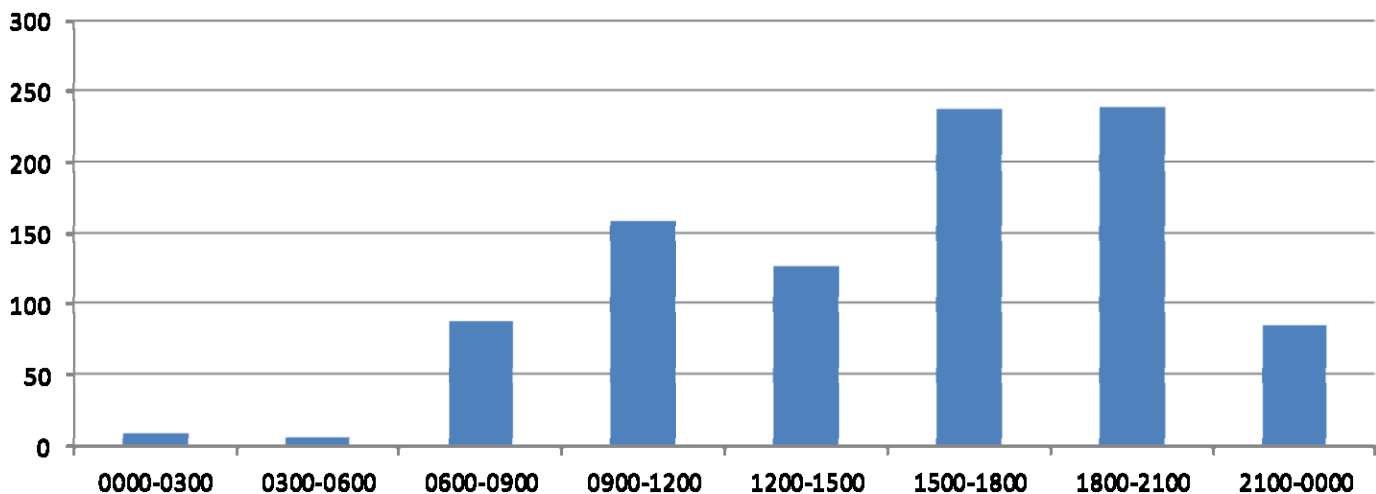
Complaints by Concern



Complaints by Zip Code

Code	Complaints	Units
90501	1	1
90712	5	1
90740	3	3
90755	129	2
90802	1	1
90803	6	2
90806	1	1
90807	8	4
90808	36	6
90814	1	1
90815	6	3
92612	80	1
92626	125	1
92646	503	1
92648	1	1
92649	30	5
Not Reported	11	11
Grand Total	947	45

Complaints by Time





LONG BEACH AIRPORT

Building a Better Way to Fly



Long Beach Airport

4100 E. Donald Douglas Drive, Long Beach, CA 90808

www.lgb.org • lgbapt@longbeach.gov

Administration • (562) 570-2619