

Airport Advisory Commission

Hal Gosling
Chair

Gerald Mineghino
Vice Chair

Christopher A. Coronado

Elizabeth Cruz

Glenn Ray

Jeff Rowe

Roland B. Scott, Jr.

Karen Sherman

Airport Management

Reginald I. Harrison
Acting Director

Ken Mason
Executive Assistant

Carolyn Carlton-Lowe
Operations & Facilities
Bureau Manager

Claudia Lewis
Manager of Administration
& Finance

Dale Worsham
Administrative Officer

Fred Pena
Facilities Management Officer

Karl Zittel
Airside Operations Officer

Drew Schneider
Manager of Airport Security

Kerry Gerot
Public Affairs Officer

Ron Reeves
Noise & Environmental Affairs Officer



**LONG BEACH
AIRPORT**

Building a Better Way to Fly



Long Beach Airport Monthly Noise Report June 2014

COMMERCIAL AIRCRAFT LATE NIGHT ACTIVITY
LGB Current Month & Calendar Year-To-Date Statistics (10 PM- 7AM)
June 2014

June				CY-T-D 2014		
10PM - 11PM Activity	2014	2013	Change	2014	2013	Change
Air Carrier & Commuter Operations	2,469	2,484	-0.6%	13,305	13,505	-1.5%
Alaska/Horizon	0	0		0	0	
Allegiant	0	0		0	0	
Delta/Skywest	1	0	100.0%	11	6	83.3%
FedEx	0	0		0	0	
Frontier	0	0		0	0	
JetBlue Airways	13	22	-40.9%	80	94	-14.9%
UPS	0	0		1	0	100.0%
US Airways	0	0		3	1	200.0%
Subtotal 10PM-11PM	14	22	-36.4%	95	101	-5.9%
11PM- 7AM Activity	2014	2013	Change	2014	2013	Change
Alaska/Horizon	0	0		0	0	
Allegiant	0	0		0	0	
Delta/Skywest	0	0		4	1	300.0%
FedEx	0	0		0	0	
Frontier	0	0		0	0	
JetBlue	2	10	-80.0%	38	32	18.8%
UPS	0	0		0	0	
US Airways	1	1	0.0%	3	4	-25.0%
Subtotal 11PM-7AM	3	11	-72.7%	45	37	21.6%
TOTAL	17	33	-48.5%	140	138	1.4%

Notes:

0.7% (17 of 2,469) of total commercial operations occurred between 10pm - 7am.

0.6 flights - Nightly average for all late night (10:00 PM—7:00 AM) commercial flights, includes unanticipated delays.

0.1 flights - Nightly average for commercial flights after 11 PM.

AIRPORT OPERATIONS & AIRCRAFT NOISE VIOLATIONS

LGB Current Month & Calendar Year-To-Date Statistics

June 2014

June				CY-T-D 2014		
Air Carrier Noise Violations	2014	2013	Change	2014	2013	Change
Alaska/Horizon	0	0		0	0	
Allegiant	0	0		0	0	
Delta/Skywest	0	0		3	0	300.0%
FedEx	0	0		0	0	
JetBlue	4	13	-69.2%	53	50	6.0%
UPS	0	0		0	1	-100.0%
US Airways	0	1	-100.0%	0	1	-100.0%
Subtotal	4	14	-71.4%	56	52	7.7%
Commuter Noise Violations	2014	2013	Change	2014	2013	Change
Alaska/Horizon	0	0		0	0	
Delta/Skywest	0	0		0	1	-100.0%
US Airways	0	0		0	0	
Subtotal	0	0		0	1	-100.0%
Non-Commercial Noise Violations	2014	2013	Change	2014	2013	Change
All GA, Charter & Other	25	14	78.6%	100	84	19.0%
TOTAL	29	28	3.6%	156	137	13.9%
Monetary Fines						
LBMC 16.43.090E Airport Surcharges	\$2,600	\$2,200		\$10,800	\$12,700	
LBMC 16.43.100 JBU Consent Decree	\$6,000	\$60,000		\$186,000	\$138,000	
TOTAL	\$8,600	\$62,200		\$196,800	\$150,700	
Airport Operations (FAA)	2014	2013	Change	2014	2013	Change
Air Carrier + Commuter Carriers	2,469	2,484	-0.6%	13,305	13,505	-1.7%
Air Taxi + General Aviation	23,582	23,775	-0.8%	153,986	125,916	22.3%
Military Operations	108	120	-10.0%	762	609	25.1%
Total Aircraft Operations	26,159	26,379	-0.8%	168,053	140,030	20.0%

Notes:

0.1% (29 of 26,159) of the Airport's total aircraft operations (Commercial & GA) resulted in an aircraft noise violation.

0.2% (4 of 2,469) the Airports Commercial operations (Commercial & Commuter) resulted in an aircraft noise violation.

Special Note:

29% (16 of 56) of the JetBlue violations occurring CY-T-D 2014 are attributed to operations conducted between 10 PM - 11PM. These (16) operations did not meet the criteria for Unanticipated Delay, and therefore a LBMC 16.43 violation of \$300 was issued for each occurrence.

AIRCRAFT NOISE VIOLATORS

June 2014

OWNER NAME	DATE	TIME	A/D	RWY	A/C TYPE	NMTID	SEL	LIMIT	STATUS
Alliance Air Charter	6/1/2014	11:16:14 PM	D	30	FA20	9	93.4	79.0	VIOLATION
Airline Transport Professionals	6/3/2014	1:00:44 AM	A	30	PA44	10	82.1	79.0	VIOLATION
JetBlue Airways Corporation	6/3/2014	10:24:17 PM	A	30	A320	10	93.8	90.0	VIOLATION
Pearl Kingdom Limited	6/3/2014	10:42:59 PM	D	30	GLF5	9	93.2	90.0	VIOLATION
Airline Transport Professionals	6/4/2014	1:54:29 AM	A	30	PA44	10	83.5	79.0	VIOLATION
Pacific Air Center LLC	6/4/2014	11:47:52 PM	A	30	C208	10	85.1	79.0	VIOLATION
Pacific Air Center LLC	6/5/2014	2:30:44 AM	A	30	C208	10	85.5	79.0	VIOLATION
NetJets Inc.	6/5/2014	10:06:06 PM	A	30	C560	10	92.2	90.0	VIOLATION
JetBlue Airways Corporation	6/7/2014	11:41:31 PM	D	30	A320	9	92.6	79.0	ALT ENF & VIO
MLW Air LLC	6/8/2014	10:47:22 PM	A	30	B757	10	96.9	90.0	VIOLATION
West Coast Charters LLC	6/10/2014	5:17:47 AM	A	30	BE20	10	86.4	79.0	VIOLATION
Casey Company	6/12/2014	1:03:41 AM	A	30	C560XL	10	89.9	79.0	VIOLATION
M.C. Aviation Corp	6/12/2014	1:56:50 AM	D	30	H25B	9	88.9	79.0	VIOLATION
Private	6/13/2014	11:26:20 PM	A	12	340A	9	82.2	79.0	VIOLATION
Sierra Land Group Inc	6/14/2014	6:20:05 AM	D	30	C560	9	94	90.0	VIOLATION
Sunrider Corporation	6/14/2014	2:04:41 PM	D	30	MD87	9	105.1	102.5	VIOLATION
JetBlue Airways Corporation	6/15/2014	1:26:27 AM	A	30	A320	10	93.7	79.0	ALT ENF & VIO
Ajeton Inc. Trustee	6/17/2014	1:56:16 PM	D	30	GLF3	9	107.6	102.5	VIOLATION
JetBlue Airways Corporation	6/19/2014	10:08:49 PM	D	30	A320	9	95.8	90.0	VIOLATION
Airline Transport Professionals	6/20/2014	12:32:40 AM	A	30	PA44	10	81.9	79.0	VIOLATION
Latitude 33 Aviation	6/22/2014	12:38:35 AM	A	30	C525	10	86.8	79.0	VIOLATION
Ameristar Jet Charter Inc	6/23/2014	11:17:27 PM	D	30	DC91	9	96.3	79.0	VIOLATION
Kalitta Charter II	6/24/2014	5:05:31 PM	D	30	B722	9	111.8	102.5	VIOLATION
Haoza LLC	6/24/2014	11:58:43 PM	A	30	PA46	10	84.4	79.0	VIOLATION
Kalitta Charter II	6/25/2014	2:47:43 AM	A	30	DC93	10	95.4	79.0	VIOLATION
Pacific Air Center LLC	6/25/2014	11:46:40 PM	A	30	C208	10	84.9	79.0	VIOLATION
Oxbow Falcon LLC	6/27/2014	10:48:50 PM	D	30	F900	9	93.5	90.0	VIOLATION
Long Beach Flying Club	6/29/2014	12:04:43 AM	D	30	PA28	9	81.4	79.0	VIOLATION
Kalitta Charter II	6/30/2014	7:48:36 PM	D	30	B722	9	111.9	102.5	VIOLATION

DEFINITIONS:

A/D/G — Arrival / Departure / Ground Operation

RWY — Runway

A/C Type — Aircraft Type

SEL — SENEL — Single Event Noise Exposure Level (dBA)

ALT ENF — Alternative Enforcement

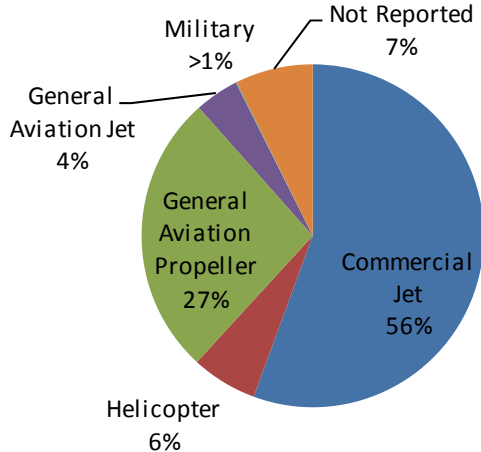
NMTID — Noise Monitor

VIO — Violation

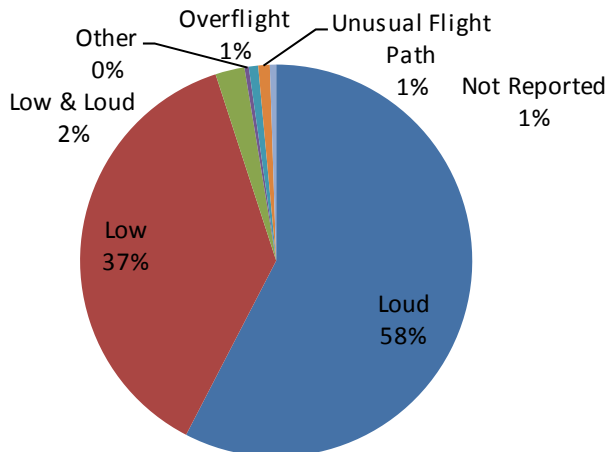
LGB AIRCRAFT NOISE COMPLAINTS

June 2014

Complaints by Aircraft Type



Complaints by Concern

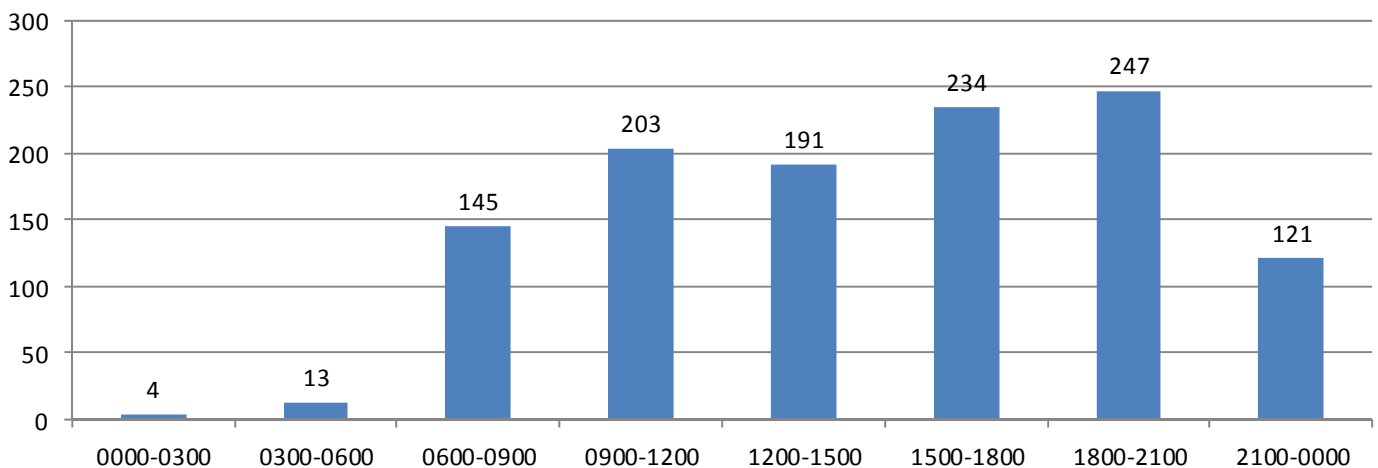


Complaints by Zip Code

Code Complaints Units

90504	1	1
90712	8	4
90713	51	1
90740	1	1
90755	55	6
90803	2	2
90804	1	1
90806	2	2
90807	23	12
90808	23	2
90815	4	3
92612	264	1
92626	184	1
92646	475	2
92647	5	2
92648	15	1
92649	34	4
Not Reported	10	8
Grand Total	1158	54

Complaints by Time





LONG BEACH AIRPORT

Building a Better Way to Fly



Long Beach Airport

4100 E. Donald Douglas Drive, Long Beach, CA 90808

www.lgb.org • lgbapt@longbeach.gov

Administration • (562) 570-2619