



# ACLU OF SOCAL COMMENT ON CCOPS IN LONG BEACH

EQUITY & HUMAN RELATIONS COMMISSION

CITY OF LONG BEACH

SEPTEMBER 9, 2022



**WHO ARE YOU?**


The background of the slide is a dark blue gradient. In the corners, there are decorative white line art elements resembling circuit boards or neural networks, with lines and small circles connecting them.

**MOHAMMAD TAJ SAR**

**ACLU OF SOUTHERN CALIFORNIA**

# AGENDA

1. MISSION OF ACLU of SOCAL
2. OVERVIEW OF CCOPS
3. CCOPS IN LONG BEACH?
4. ALTERNATIVES

A decorative background featuring a dark blue gradient with a subtle circuit board pattern of white lines and dots along the edges.

**WHAT WORK DO  
YOU DO ON  
TECH?**



## TECHNOLOGY & CIVIL LIBERTIES

The ACLU of Northern California safeguards civil liberties in the digital world. As technology advances, we make sure that protections for privacy and free speech aren't left behind. We push back on digital censorship and government surveillance.





**Privacy & Free Speech**  
IT'S GOOD FOR BUSINESS

[Overview](#)

[About](#)

[View PDF](#)



[PRIVACY](#)

[FREE SPEECH](#)

[CASE STUDIES](#)

[RESOURCES](#)

# PRIVACY & FREE SPEECH

It's Good For Business



**Apple Cuts Out Contact With  
Contacts: Smart Move for Privacy**

[READ CASE STUDY](#)

**YOUR GUIDE TO BUILDING THE RIGHT PRIVACY  
& FREE SPEECH PRACTICES FROM THE START.**



A TOOLKIT

# FIGHTING LOCAL SURVEILLANCE



**ACLU**  
California





# THE TRAVELER'S BILL OF RIGHTS



*Your rights at U.S. Airports  
and Ports of Entry*

The background of the slide is a dark blue gradient. In the four corners, there are decorative white line art elements that resemble circuit board traces or neural network connections, with small circles at the end of the lines.

# WHAT IS CCOPS?



# **COMMUNITY CONTROL OVER POLICE SURVEILLANCE**

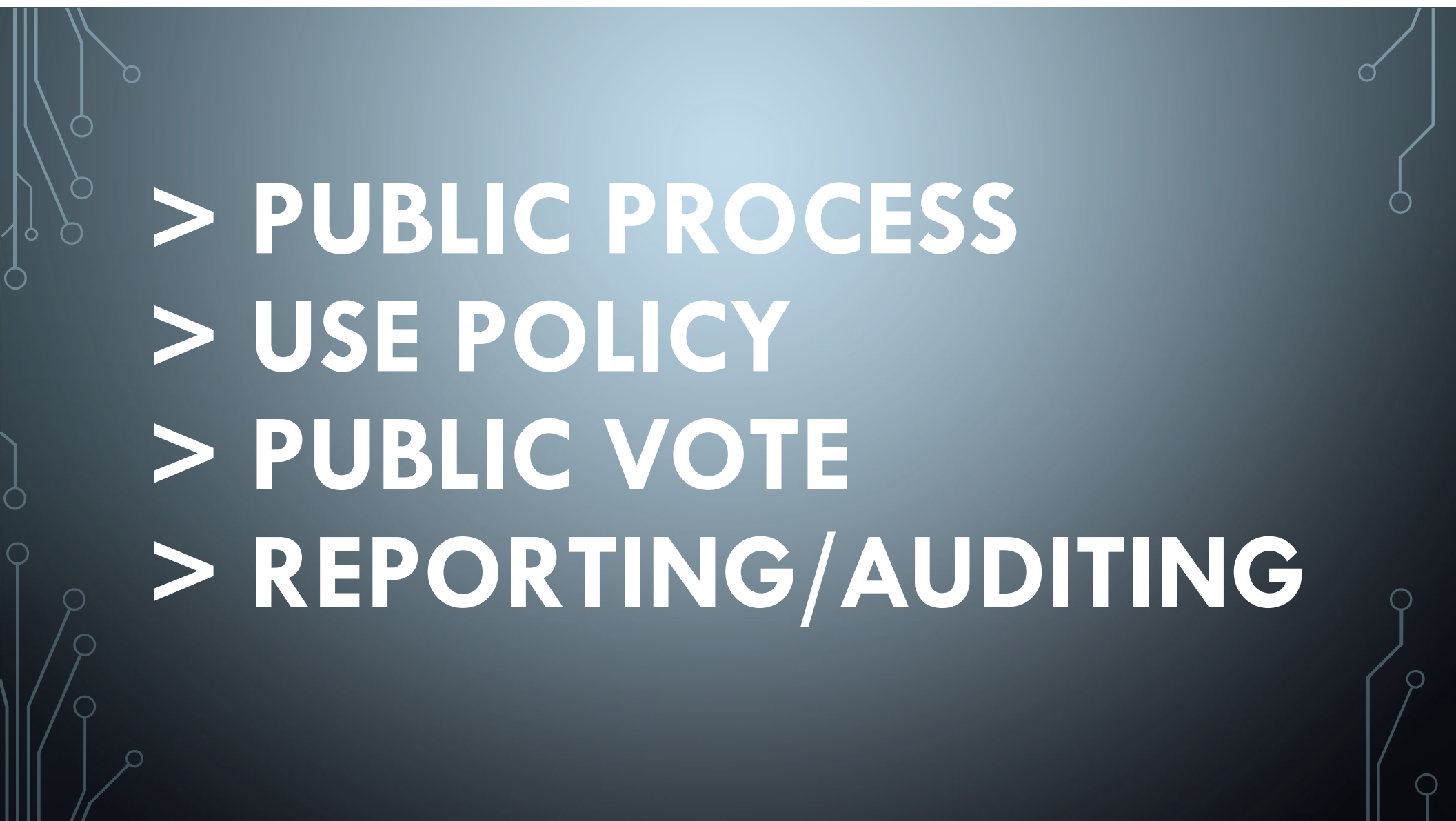
The background of the slide is a dark blue gradient. In the corners, there are decorative white line art elements resembling circuit boards or neural networks, with lines and small circles connecting them.

# **A MODEL LAW THAT REQUIRES PUBLIC PROCUREMENT PROCESS & USE POLICIES**

The background of the slide features a dark blue gradient with faint, light blue circuit-like lines and nodes. These lines are primarily located along the left and right edges, with some extending towards the center. The nodes are small circles at the end of the lines, creating a technical or digital aesthetic.

# **A MODEL LAW THAT REQUIRES PUBLIC PROCUREMENT PROCESS & USE POLICIES**



- 
- The background of the slide features a dark blue gradient with white circuit-like lines and nodes along the left and right edges, creating a technical or digital aesthetic.
- > PUBLIC PROCESS**
  - > USE POLICY**
  - > PUBLIC VOTE**
  - > REPORTING/AUDITING**

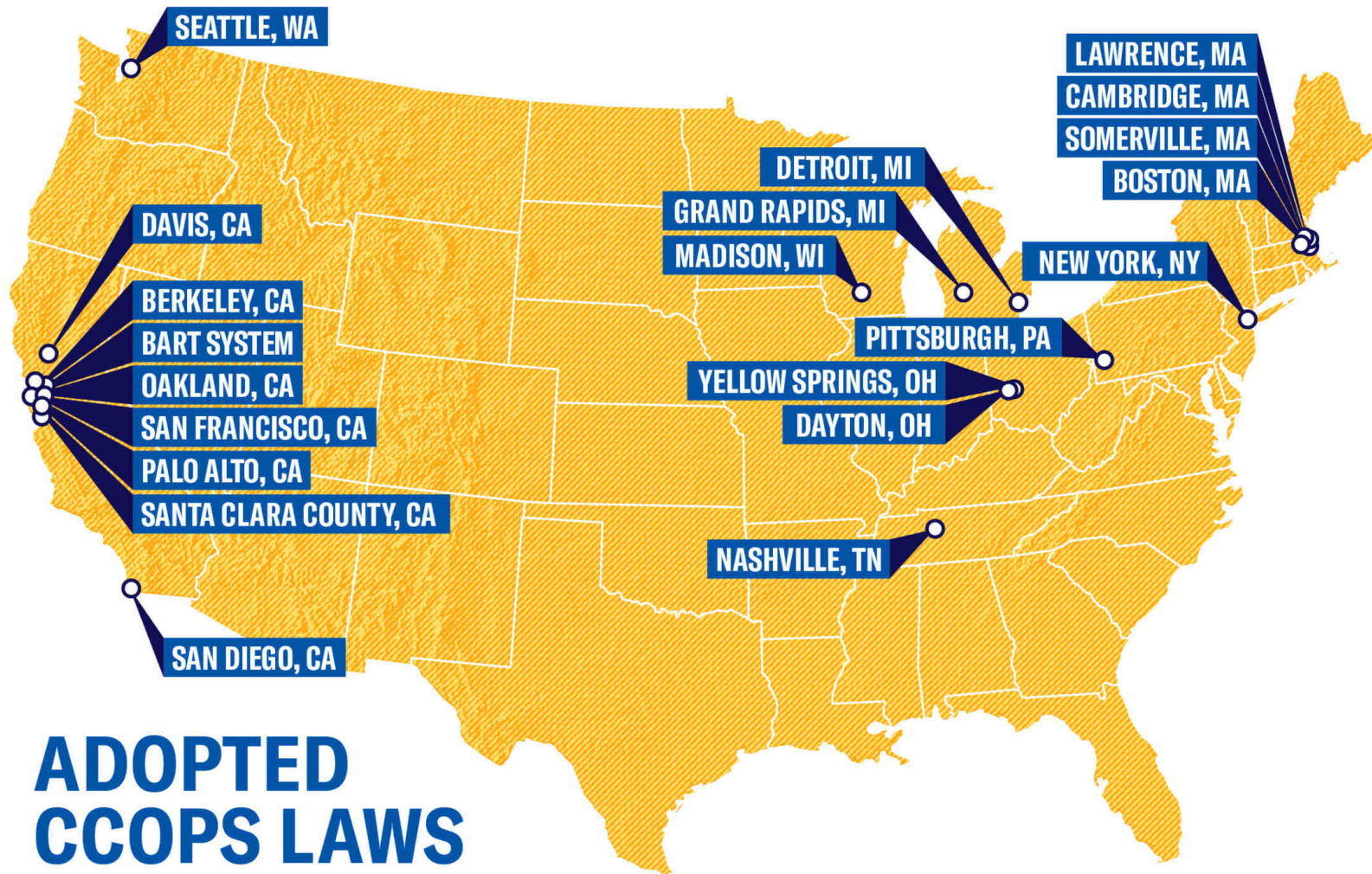
The background is a dark blue gradient. In the corners, there are decorative white line art elements resembling circuit boards or neural networks, with lines and small circles.

**IN ADDITION:**

**> SUBSTANTIVE BANS**



**WHO HAS CCOPS?**



## ADOPTED CCOPS LAWS

The background of the slide is a dark blue gradient. In the corners, there are decorative white line art elements resembling circuit boards or neural networks, with lines and small circles connecting them.

**SHOULD LONG  
BEACH ADOPT  
CCOPS?**





**ACLU SOCAL: NO.**



VIA EMAIL

July 6, 2022

Alyssa Gutierrez, Chair  
Equity and Human Relations Commission  
City of Long Beach

Re: **ACLU of Southern California Comment on LBPB Surveillance Technology Acquisition**

Dear Members of the Equity and Human Relations Commission,

We understand this Commission is currently assessing the process by which the Long Beach Police Department acquires surveillance technology, and has expressed interest in the ACLU-developed Community Control Over Police Surveillance ("CCOPS") model. If this Commission truly seeks to respond to the community's consistent demands, it will urge the City to bar LBPB from expanding its surveillance arsenal and end its existing surveillance systems. Creating a new approval process or approval criteria for acquiring surveillance contradicts the Long Beach community's demands, and we oppose any efforts by this Commission to enact such a process or criteria in light of LBPB's history of surveillance abuse and police violence. Instead, we commend the Commission for taking up LBPB's widespread use of Automatic License Plate Reader technology and face recognition services, and urge the Commission to recommend that the City ban the use of both citywide.

Fundamentally, the CCOPS model is about community control. Its purpose is to put the community in control of surveillance decisions, which requires that decisionmakers center and address community concerns about surveillance technology. To operate as intended, oversight entities must have the authority—and be willing—to say "No" when police seek to acquire or use surveillance technologies that the public opposes.

The history of LBPB's surreptitious acquisitions and use of such technology—and the Long Beach City Council's refusal to heed community calls to end such use—demonstrate that



**REASONS:**

The background is a dark blue gradient. In the corners, there are decorative white line art elements resembling circuit boards or neural networks, with lines and small circles.

# **>COMMUNITY CONTROL OVER POLICE SURVEILLANCE**

The background is a dark blue gradient. In the corners, there are decorative white line art elements resembling circuit boards or neural networks, with lines and small circles.

# **> COMMUNITY CONTROL OVER POLICE SURVEILLANCE**



The background is a dark blue gradient. In the corners, there are decorative white line art elements resembling circuit boards or neural networks, with lines and small circles.

**> CCOPS REQUIRES  
TRUST; LBPD LACKS IT**

# Los Angeles Times

TECHNOLOGY AND THE INTERNET

## Police in Pasadena, Long Beach pledged not to send license plate data to ICE. They shared it anyway



An automated license plate reader on an unmarked police car in Washington, D.C., in 2014. Documents show that police in Pasadena and Long Beach shared data from automated license plate readers with Immigration and Customs Enforcement, despite promises to withhold such information from the federal agency. (Jim Lo Scalzo / EPA)

BY SUHAUNA HUSSAIN, JOHANA BHUIYAN

DEC. 21, 2020 8:27 AM PT

### LATEST TECHNOLOGY >



BUSINESS

Tesla told California workers to ditch their union shirts. That's i labor board rules

Aug. 29, 2022



CALIFORNIA

Google will label whi health clinics provide abortions

Aug. 26, 2022



BUSINESS

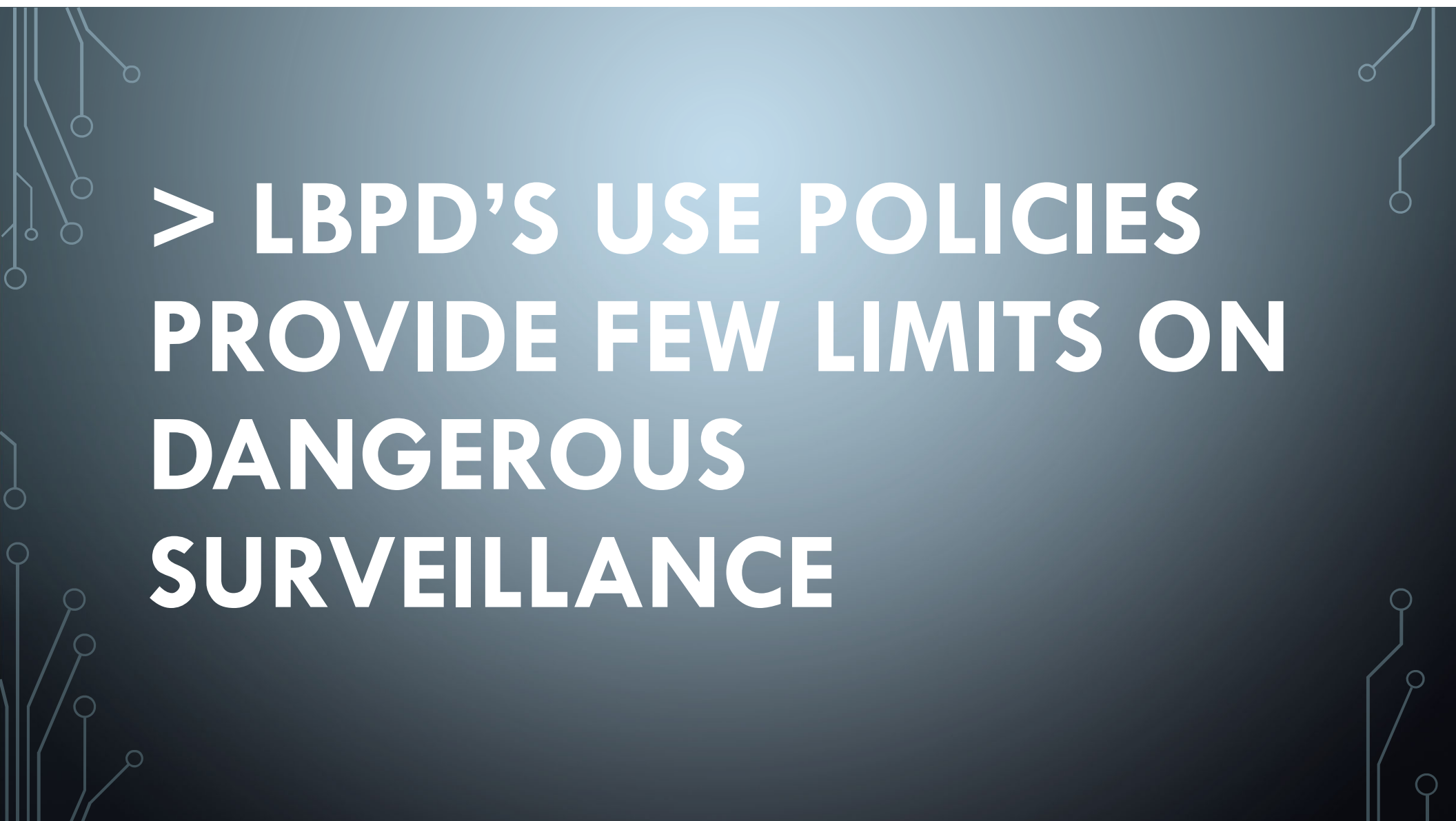
How Musk plans to k cellphone dead zones across the U.S.

Aug. 26, 2022



ENTERTAINMENT & ARTS

'I've got a reputation protect': How the gar design legend behind

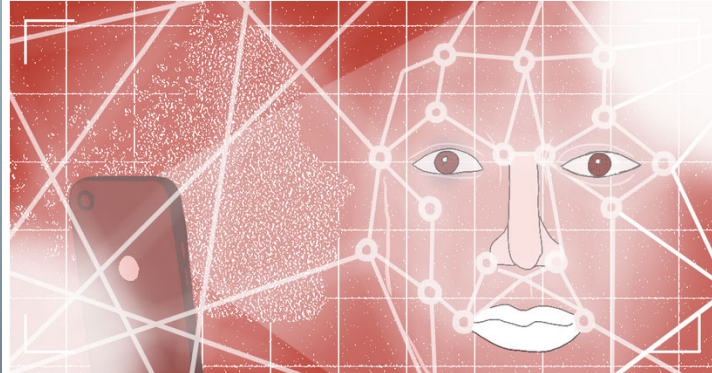
The background of the slide is a dark blue gradient. It is decorated with white, stylized circuit board traces that run along the left and right edges, featuring small circles at various points.

**> LBPD'S USE POLICIES  
PROVIDE FEW LIMITS ON  
DANGEROUS  
SURVEILLANCE**

## 'This Doesn't Look Good': Records Show LBPD Failed to Properly Document Over 1,000 Facial Recognition Searches

LA County Sheriff Alex Villanueva and candidate Robert Luna oversaw improper searches.

Kevin Flores | April 11, 2022



Artwork by Catherina Riesgo (@archiveoflove)

**N**ewly obtained records show that in recent years the Long Beach Police Department has run over a thousand facial recognition searches without indicating any suspected criminal activity, flouting established transparency rules critical to the internal auditing and oversight of law enforcement's use of this highly invasive technology.

Instead of crimes, most of these searches simply referenced the 2020 George Floyd demonstration — a constitutionally protected activity.

The background of the slide is a dark blue gradient. It is decorated with white, stylized circuit board traces that run along the left and right edges, featuring small circular nodes at various points.

**> STRONG AND  
ORGANIZED  
COMMUNITY  
OPPOSITION**



# FOR INSTANCE...



The background of the slide is a dark blue gradient. In the corners, there are decorative white line art elements resembling circuit boards or neural networks, with lines and small circles connecting them.

**> CITY COUNCIL  
APPROVALS LIKELY?**

# ALTERNATIVES TO CCOPS?

The background of the slide is a dark blue gradient with a subtle, stylized circuit board pattern. Thin white lines representing circuit traces and small circles representing components are visible, particularly along the left and right edges.

**> BAN THE SURVEILLANCE!**

The background of the slide is a dark blue gradient. In the corners, there are decorative white line art elements resembling circuit boards or neural network connections, with small circles at the end of the lines.

## **FACE RECOGNITION BANS:**

**PORTLAND, OR  
SANTA CRUZ  
MINNEAPOLIS  
NEW ORLEANS  
JACKSON**

**PITTSBURGH  
SAN FRANCISCO  
BALTIMORE  
BOSTON  
...AND MORE**

The background of the slide is a dark blue gradient. In the corners, there are decorative white line art elements resembling circuit boards or neural networks, with lines and small circles connecting them.

**> DIVERT SURVEILLANCE  
FUNDS TO LIFE-AFFIRMING  
SUPPORTIVE SERVICES.**



The background is a dark blue gradient. In the corners, there are decorative white lines resembling circuit board traces, with small circles at the end of the lines.

# THANK YOU.

FOR MORE INFORMATION, CONTACT ME:

[mtajsar@ACLULOCAL.ORG](mailto:mtajsar@ACLULOCAL.ORG)