

MAC Report

July 2022

SUBMITTED BY THE MARINE BUREAU



TABLE OF CONTENTS

1. Marinas and Waterways
2. Beaches and Waterways
3. Marine Maintenance Work Order Graphs
4. Pump Out Inspection Report
5. Tide Table



MARINAS AND WATERWAYS

Accomplishments

- ❖ Staff installed 5 mph signage on both sides of Appian bridge informing boaters of speed limit.
- ❖ Staff added additional secondary containment with fill barrels including new signage to D-2 & D-5 oil recycle containers.
- ❖ Staff replaced, serviced & cleaned as needed all buoys from Shoreline Marina Entrance west past South Shore Launch Ramp,
- ❖ Staff trenched and replace 100' of old damaged water line and backflow that supplies the drinking fountain at Bluff Park's Orizaba stairs that leads down to the beach.
- ❖ Staff greased all the Gangway bearings for both Shoreline & Rainbow Marina's.
- ❖ Staff using the crane, unloaded and reloaded all dragon boats for their annual event.
- ❖ Staff repaired water main line break at B-5 restroom.
- ❖ Staff repaired D-5 public's restroom and put it back in service.
- ❖ Staff painted and had floor re-epoxied at Station 31's public restroom.



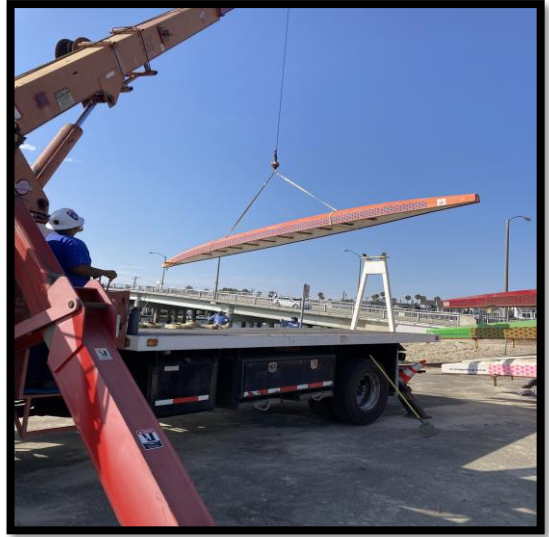
Projects in the works

- ❖ Staff is in the process of replacing all the damaged and missing signs throughout the Long Beach Shoreline Marina. Staff has already replaced all the "Gangway" and "No Visitor" signs. 90% completed
- ❖ Staff is in the process of retrofitting the existing twelve (12) booster pumps from a wet system to a dry fire suppression system in the Long Beach Shoreline Marina. 80% completed.
- ❖ Staff is in the process of making improvements to the Alamitos Bay Marina office including painting the interior of the building. 50% completed
- ❖ Staff is in the process of inspecting and tightening all the loose fingers throughout the Long Beach Shoreline Marina. 40% completed
- ❖ Staff is in the process of inspecting and replacing all the damaged gangway water supply lines throughout Long Beach Shoreline Marina, as needed. 45% completed



MARINAS AND WATERWAYS

- ❖ Staff is in the process of repairing the restroom plumbing throughout Long Beach Shoreline Marina. 35% completed
- ❖ Staff is in the process of repairing concrete fingers throughout Long Beach Shoreline Marina. 10% completed
- ❖ Staff is in the process of replacing exterior doors at the Belmont Pool office. 50% completed
- ❖ Staff is in the process of replacing all electrical components (breakers, receptacles, etc.) inside the pedestals located throughout Shoreline & Rainbow Harbor Marina's. 25% completed
- ❖ Staff is in the process of painting memorial benches in ABM. 50% completed
- ❖ Staff is in the process of installing two isolation valves for all 31 Gangway's in Shoreline Marina. 5% completed
- ❖ Staff is in the process of installing two isolation valves for all 33 Gangway's in Shoreline Marina. 85% completed
- ❖ Staff is in the process of repairing seawall on Bayshore. 85% complete
- ❖ Staff is in the process of retrofitting all pedestals inside of Rainbow Harbor Marina (SHM 1,2,3,4 docks 8 & 9) 35% completed
- ❖ Staff is in the process of painting curbs and guard post throughout DTM. 85% completed
- ❖ Staff is in the process of cleaning buoy's in ABM and DTM Marina's. 80% completed
- ❖ Staff is in the process of remodeling the women's restrooms at Harbor Master Office. 70% complete
- ❖ Staff is in the process of pressure washing and painting all memorial benches as well as trash receptacles at Bluff Park & Mole road. 15% complete



BEACHES AND WATERWAYS

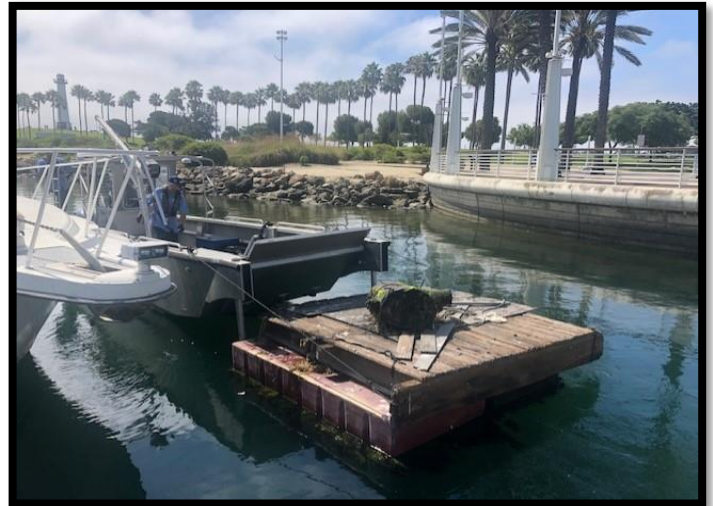
Accomplishments

- ❖ Beach Maintenance staff removed over 142 tons of trash and debris from the beaches and inner bays.
- ❖ Beach Maintenance staff removed trash and debris from the beach waterline.
- ❖ Beach Maintenance staff serviced 300 trash receptacles during the month of July.
- ❖ Beach Maintenance staff built up and maintained the berm on the East Peninsula beach between 62nd – 72nd place.
- ❖ Beach Maintenance staff rebuilt the beach area at the Marine Stadium.
- ❖ Beach Maintenance staff swept the bike/pedestrian path.
- ❖ Beach Maintenance staff conducted weekly cleanups of several homeless encampments throughout the beach areas.
- ❖ Beach Maintenance staff raked and cleaned throughout beach areas.
- ❖ Beach Maintenance staff conducted weed abatement around the public showers and walkways throughout the beach areas.
- ❖ Beach Maintenance staff cleaned and maintained parking lot areas leading to the boat ramps on the beaches.
- ❖ Beach Maintenance staff conducted sand removal from the sidewalks at the beach parking lot entrance.
- ❖ Beach Maintenance planted Corydalis at Basins 1 & 2.
- ❖ Beach Maintenance staff conducted landscape detailing at 2nd Street Library.
- ❖ Beach Maintenance staff addressed landscape maintenance issues at the parks located throughout Beach Maintenance areas.



BEACHES AND WATERWAYS

- ❖ Queensway Bay staff conducted a cleaning of all 60 basket filters in the Rainbow Lagoon; six days per week, twice per day. Staff replaces and cleans all 60 baskets once a month.
- ❖ Queensway Bay staff conducted daily removal of water borne debris and algae in the Rainbow Lagoon, Rainbow Harbor Marina and Long Beach Shoreline Marina using hand nets.
- ❖ Queensway Bay staff removed trash from docks, four times per week.
- ❖ Queensway Bay crew replaced two main water lines for dock 5
- ❖ Queensway Bay staff conducted daily cleaning and maintenance of all trash skimmers on the docks, six days per week.
- ❖ Queensway Bay staff conducted monthly inspections on all docks throughout Rainbow Harbor Marina.
- ❖ Queensway Bay staff serviced all sewage pumps on the commercial docks 1-6.
- ❖ Queensway Bay staff conducted weekly encampment posting and cleanups.
- ❖ Queensway Bay removed large floating dock from Rainbow Harbor dock #1.
- ❖ Queensway Bay staff completed 61 work orders and 26 Go Long Beach request for the month of July.
- ❖ Queensway Bay staff conducted daily graffiti removal of the entire Rainbow Harbor area, including the Queensway bridge bike path and Queen Mary Park.
- ❖ Queensway Bay staff performed routine maintenance on the Wave and Dolphin Fountain twice per week.
- ❖ Queensway Bay staff power washed the exterior of the Wave Fountain bi-weekly.
- ❖ Queensway Bay crew painted 12 picnic benches in Shoreline Park.
- ❖ QWB crew completed project to clean all decking on Esplanade in Rainbow Harbor.
- ❖ QWB crew cleaned floors in Visitor Information kiosk.



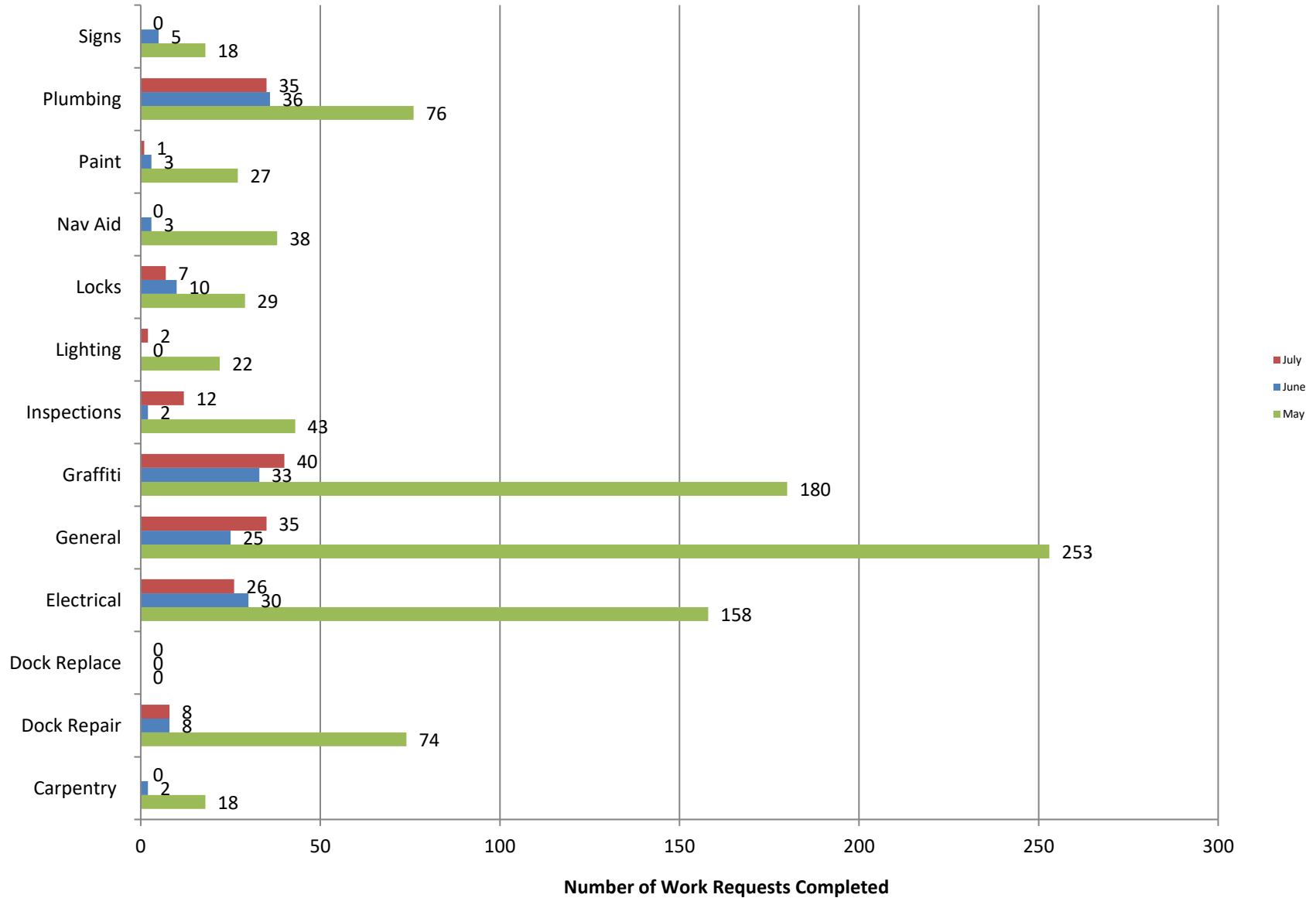
BEACHES AND WATERWAYS

Projects in the works

- ❖ Beach Maintenance staff is continuing the process of rebuilding sections of the peninsula where erosion occurs.
- ❖ QWB crew scheduled to coordinate additional repairs to Rainbow Lagoon's saltwater fill system

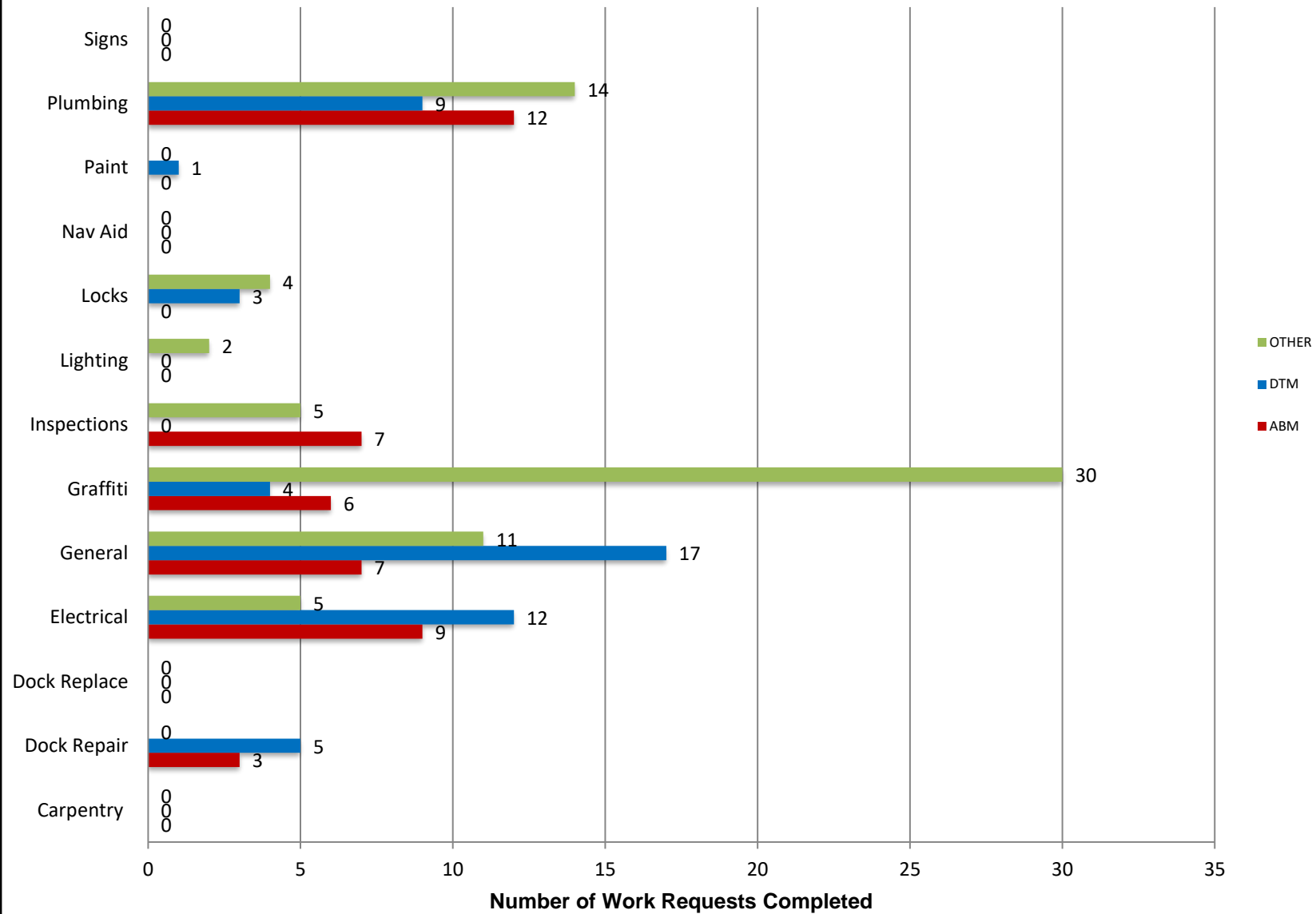
Marine Maintenance

Work Request Completed by Month



Marine Maintenance

Work Requests Completed by Location



PUMPOUT INSPECTION REPORT

Pump Out Location	Inspection Date			
	07/07/22	07/14/22	07/21/22	07/28/22
Gwy A, A	W	W	W	W
Gwy A, B	W	W	W	W
Parker's Public Dock, A	NW	NW	NW	NW
Parker's Public Dock, B	NW	NW	NW	NW
Parker's Public Dock, C	W	W	W	W
Dock 9	NW	NW	NW	NW
Basin 6 South	W	W	W	W
Davie's Launch Ramp, A	W	W	W	W
Station 31, A	NW	W	W	W
Station 31, B	NW	W	W	W
Station 21	W	W	W	W
Basin 1, Gwy 2	W	W	W	W
Basin 1, Gwy 4	W	W	W	W
Basin 2, Gwy 8	W	W	W	W
Basin 2, Gwy 11	W	W	W	W
Basin 3, Gwy 16	W	W	W	W
Basin 3, Gwy 19	W	W	W	W
Basin 4, Gwy 28	W	W	W	W
Basin 4, Gwy 31	W	W	W	W
Basin 5, Gwy 33	W	W	W	W
Basin 5, Gwy 34	W	W	W	W

KEY
W = Working
NW = Not Working
N/A = Not Applicable

California, Los Angeles, Long Beach, Inner Harbor

August 2022

N 33° 46.3' / W 118° 12.6'

