

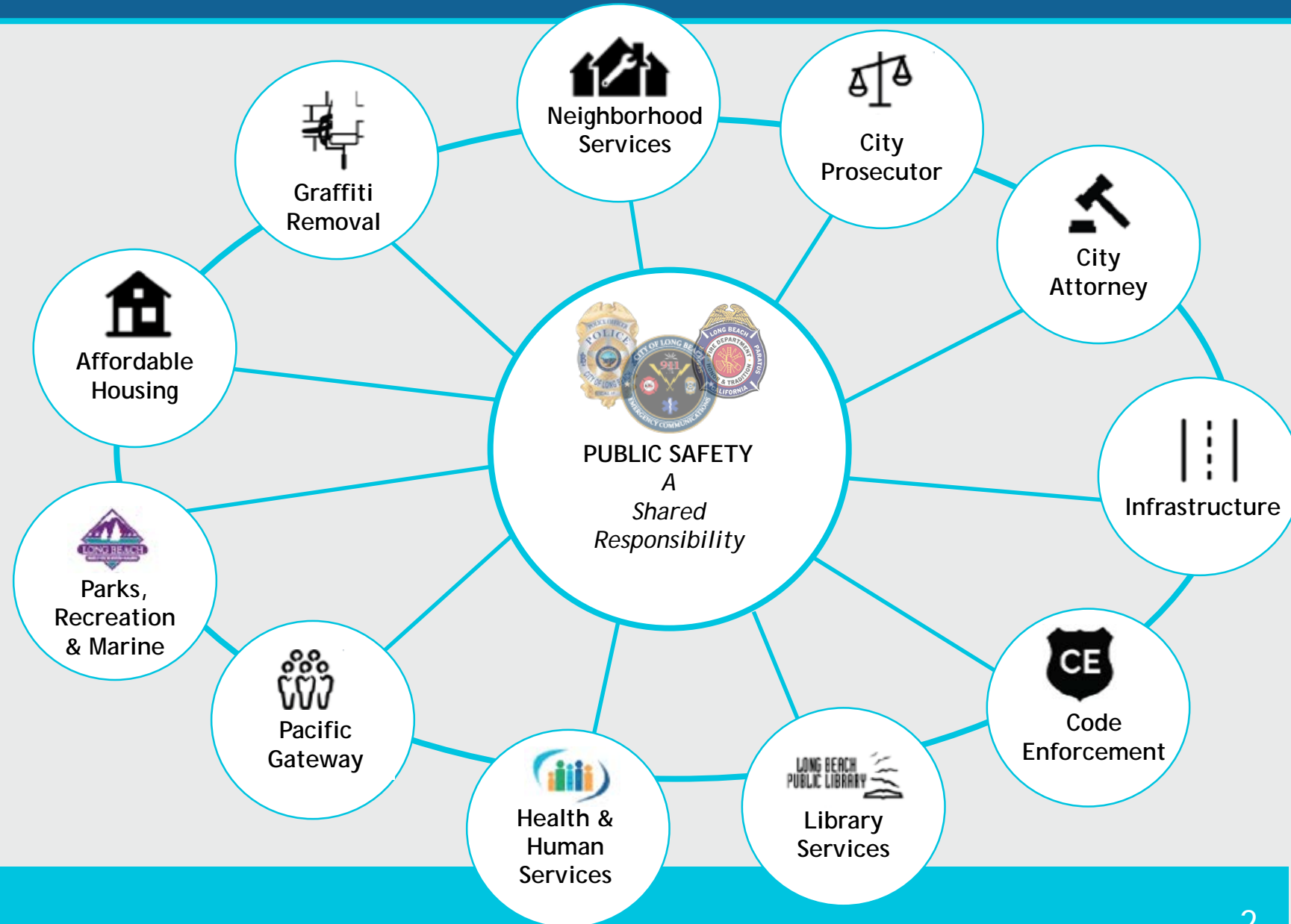


Long Beach Police Department

Services and Initiatives Contributing to the Public Safety Continuum

Public Safety Committee Meeting
July 29, 2022

City of Long Beach Continuum of Public Safety



Public Safety Initiatives: Early Intervention Programs

Initiative/ Program	Focus Population/Area	Description
Youth Leadership Academy	High School Students	Free 3-week summer program promoting positive leadership and personal development skills.
Kids and Cops	Middle School Students	Officers, students and community groups participate in sporting activities that engage youth, build dialogue and trust.
Police Explorer Program	Youth Ages 14-20	Youth program that provides law enforcement training and community engagement activities,
Search and Rescue Program	Youth Ages 15-19	Youth program that provides training opportunities including a ride-along with our police officers and Fire Department's rescue team organization.
Criminal Justice Clubs	High School Students	Partnership with LBUSD to offer an on-campus school club that provides activities related to careers in criminal justice.
LBPD Boxing Team: Youth Mentoring Program	Youth 14+	Provide mentorship and coaching to community youth that are interested in the program.



The Cabrillo High School Criminal Justice Club spends the day at the LBPD Academy.



LBPD boxing team, community partners and local kids they are helping to mentor and coach.

Public Safety Initiatives: Community Outreach & Engagement

Initiative/ Program	Focus Population/Area	Description
Neighborhood Walks	Community	Assigned officers engage the community, cultivate relationships within the neighborhood and address community concerns.
National Night Out	Community	Annual community building campaign that promotes community-police partnerships
Toy Patrol	Low-income families	Collaboration to collect and gift toys to families, many of whom are victims of crimes.
Community Liaison Officer	Community	Interact with the community members at the scene following a critical incident.
Shop with a Cop	Low-income students	Officers and volunteers shop with LBUSD students from underserved communities.
Community Police Academy	Community members 18+	Community members learn about LBPD with a mix of classroom and scenario-based activities.



Neighborhood Walks Program Statistics

464 Hours Walked

4,542 Community Members Contacted

520 Businesses Contacted

Source: LBPD Data; as of 7/25/22.

Public Safety Initiatives: Alternative Response Models & Diversion

Initiative/ Program	Focus Population/Area	Description
Quality of Life (QOL)	Persons experiencing homelessness	Contact persons experiencing homelessness to connect them with services.
Mental Health Evaluation Team (MET)	Persons experiencing a mental health needs	Officer and mental health clinician respond to calls for service involving persons with mental health needs.
Clinician in Jail Program	Justice-involved adults	Provides mental health services and resource referrals to jail inmates.
Juvenile Diversion Programs	Justice-involved juveniles	Eligible youth are referred to diversion programs in lieu of criminal prosecution.
Warrants Clearance Events	Justice-involved adults	Assists eligible individuals with minor traffic or non-violent misdemeanor warrants by issuing citations with new court dates to address warrant offenses.



Quality of Life Team members visit local encampments to offer services.

Quality of Life Team Statistics

5,153 Contacts Offering Services
175 Contacts Resulting in Temporary Housing
26 Contacts Resulting in Permanent Housing

Source: LBPD Data; as of 7/25/22.

Public Safety Initiatives: Enforcement & Crime Deterrence

Initiative/ Program	Focus Population/Area	Description
Coordinated Response Team (CRT)	Citywide violent crime	Respond to calls to service to assist with active firearm assault incidents and recover illegal firearms.
Divisional Directed Enforcement Teams (DET)	Citywide violent crime	Identify and arrest the impact offenders driving violence in our community.
Investigations	Citywide crime	Identify and arrest offenders of crime incidents.
Preventative Patrols	Citywide violent crime	High visibility patrols to promote public safety and crime deterrence.
Trauma Intervention Program (TIP)	Individuals affected by tragic events	TIP volunteers provide immediate, on-scene support and resources to victims, survivors, witnesses and families of traumatic events.



Coordinated Response Team members visit local businesses.

Our Community Partners

- City of LB Departments
- Long Beach Unified School District
- Los Angeles County:
 - Mental Health
 - Probation
 - Public Health
 - Office of Diversion and Reentry
 - Human Relations Commission
- California Conference for Equality and Justice (CCEJ)



- LB Human Trafficking Task Force
- Legal Aid Foundation
- Interval House
- Su Casa Women's Shelter
- WomenShelter of Long Beach
- The Guidance Center
- Long Beach Trauma Recovery Center
- Long Beach Interfaith Council
- Ministers Alliance
- Trauma Intervention Program (TIP)



Public Safety Through Partnerships
