

# MAC Report

**May 2022**



**SUBMITTED BY THE MARINE BUREAU**



## TABLE OF CONTENTS

1. Marinas and Waterways
2. Beaches and Waterways
3. Marine Maintenance Work Order Graphs
4. Pump Out Inspection Report
5. Tide Table



# MARINAS AND WATERWAYS

## Accomplishments

- ❖ Staff installed a new “A” buoy in the main channel.
- ❖ Staff completed bright work at 6N & 6S: painted red curbs and yellow post.

## Projects in the works

- ❖ Staff is in the process of replacing all the damaged and missing signs throughout the Long Beach Shoreline Marina. Staff has already replaced all the “Gangway” and “No Visitor” signs. 90% completed
- ❖ Staff is in the process of retrofitting the existing twelve (12) booster pumps from a wet system to a dry fire suppression system in the Long Beach Shoreline Marina. 80% completed
- ❖ Staff is in the process of making improvements to the Alamitos Bay Marina office including painting the interior of the building. 50% completed
- ❖ Staff is in the process of inspecting and tightening all the loose fingers throughout the Long Beach Shoreline Marina. 40% completed
- ❖ Staff is in the process of inspecting and replacing all the damaged gangway water supply lines throughout Long Beach Shoreline Marina, as needed. 45% completed
- ❖ Staff is in the process of repairing the restroom plumbing throughout Long Beach Shoreline Marina. 35% completed
- ❖ Staff is in the process of repairing concrete fingers throughout Long Beach Shoreline Marina. 10% completed
- ❖ Staff is in the process of replacing exterior doors at the Belmont Pool office. 50% completed
- ❖ Staff is in the process of replacing all electrical components (breakers, receptacles, etc.) inside the pedestals located throughout Shoreline & Rainbow Harbor Marina’s. 25% completed
- ❖ Staff is in the process of painting memorial benches in ABM. 50% completed
- ❖ Staff is in the process of installing two isolation valves for all 31 Gangway’s in Shoreline Marina. 5% completed
- ❖ Staff is in the process of installing two isolation valves for all 33 Gangway’s in Shoreline Marina. 85% completed
- ❖ Staff is in the process of repairing seawall on Bayshore. 85% complete
- ❖ Staff is in the process of retrofitting all pedestals inside of Rainbow Harbor Marina (SHM 1,2,3,4 docks 8 & 9) 35% completed





## MARINAS AND WATERWAYS

- ❖ Staff is in the process of painting curbs and guard post throughout DTM. 85% completed
- ❖ Staff is in the process of cleaning buoys in ABM and DTM Marina's. 50% completed
- ❖ Staff is in the process of remodeling the women's restrooms at Harbor Master Office. 20% complete
- ❖ Staff is in the process of painting interior of beach restrooms B-7 thru B-2. 60% complete



## **BEACHES AND WATERWAYS**

### **Accomplishments**

- ❖ Beach Maintenance staff removed over 102 tons of trash and debris from the beaches and inner bays.
- ❖ Beach Maintenance staff removed trash and debris from the beach waterline.
- ❖ Beach Maintenance staff serviced 300 trash receptacles during the month of May.
- ❖ Beach Maintenance staff built up and maintained the berm on the East Peninsula beach between 62<sup>nd</sup> – 72<sup>nd</sup> place.
- ❖ Beach Maintenance staff swept the bike/pedestrian path.
- ❖ Beach Maintenance staff conducted weekly cleanups of several homeless encampments throughout the beach areas.
- ❖ Beach Maintenance staff conducted weed abatement near public showers, walkways, and throughout the beach areas.
- ❖ Beach Maintenance staff raked and cleaned throughout beach areas.
- ❖ Beach Maintenance staff swept and maintained parking lot areas leading to boat ramps on the beaches.
- ❖ Beach Maintenance staff placed additional trash cans in preparation for Memorial Day and summer crowds.
- ❖ Beach Maintenance repaired the water mainline on Ocean Blvd.
- ❖ Beach Maintenance staff audited and repaired the irrigation at Queen Mary Park.
- ❖ Beach Maintenance staff repaired water main at Marine Stadium.
- ❖ Beach Maintenance staff planted Podocarpus shrubs at Basin 6 South.
- ❖ Queensway Bay staff conducted a cleaning of all 60 basket filters in the Rainbow Lagoon: six days per week, twice per day. Staff replaces and cleans all 60 baskets once a month.
- ❖ Queensway Bay crew replaced large submersible pump at Rainbow Lagoon for saltwater fill system





## **BEACHES AND WATERWAYS**

- ❖ Queensway Bay staff conducted daily removal of water borne debris and algae in the Rainbow Lagoon, Rainbow Harbor Marina and Long Beach Shoreline Marina using hand nets.
- ❖ Queensway Bay staff removed trash from docks, three times per week.
- ❖ Queensway Bay staff conducted daily cleaning and maintenance of all trash skimmers on the docks, six days per week.
- ❖ Queensway Bay staff conducted monthly inspections on all docks throughout Rainbow Harbor Marina.
- ❖ Queensway Bay staff serviced all sewage pumps on the commercial docks 1-6.
- ❖ Queensway Bay staff conducted weekly encampment posting and cleanups.
- ❖ Queensway Bay removed 500 feet of debris boom, buoys, and large anchors from Rainbow Harbor entrance.
- ❖ Queensway Bay staff completed 15 work orders and 5 Go Long Beach request for the month of May.
- ❖ Queensway Bay staff conducted daily graffiti removal of the entire Rainbow Harbor area, including the Queensway bridge bike path and Queen Mary Park.
- ❖ Queensway Bay staff performed routine maintenance on the Wave and Dolphin Fountain.
- ❖ Queensway Bay staff power washed the exterior of the Wave Fountain bi-weekly.
- ❖ Queensway Bay crew painted vehicle access tunnel at Harry Bridges Memorial Park
- ❖ Queensway Bay staff installed 6 new LED flood lights in tunnel at Harry Bridges Memorial Park
- ❖ QWB crew installed security guards on all windows and door at Horn Blower building

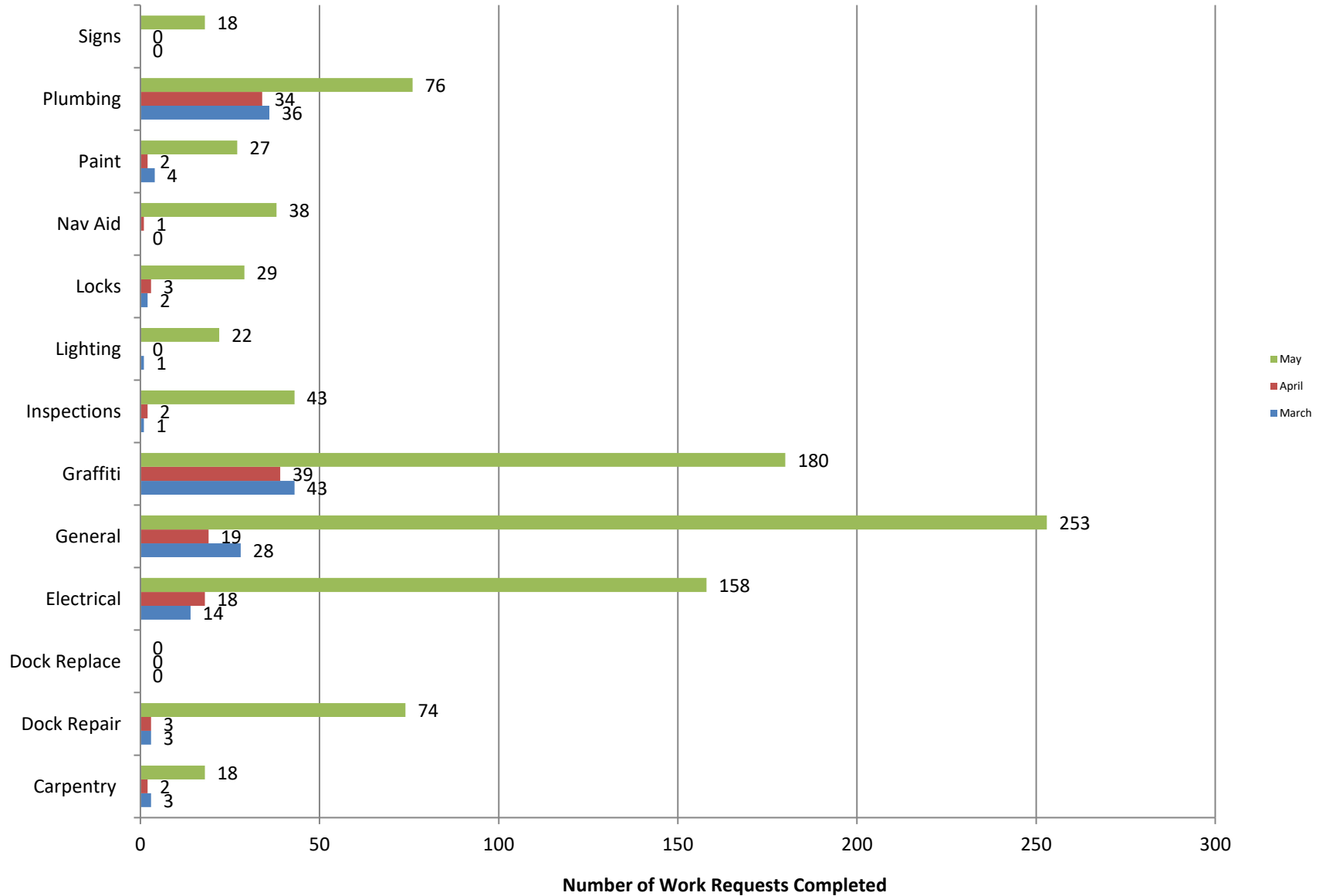


### **Projects in the works**

- ❖ Beach Maintenance staff is continuing the process of rebuilding sections of the peninsula where erosion occurs.
- ❖ QWB crew scheduled to coordinate additional repairs to Rainbow Lagoon's saltwater fill system

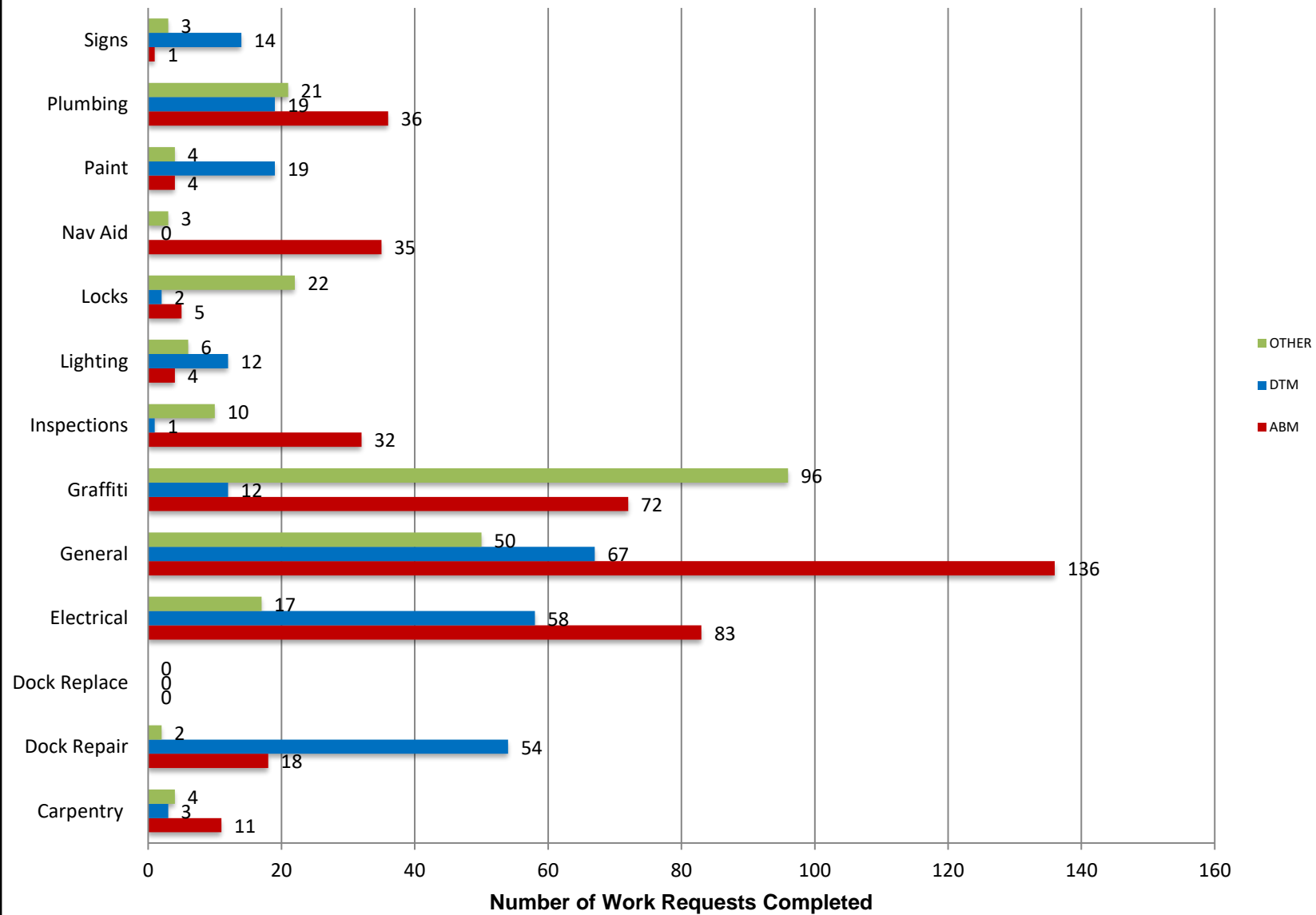
# Marine Maintenance

## Work Request Completed by Month



# Marine Maintenance

## Work Requests Completed by Location





## PUMPOUT INSPECTION REPORT

Pump Out Location	Inspection Date		
	5/12/22	5/19/22	5/26/22
Gwy A, A	W	W	W
Gwy A, B	W	W	W
Parker's Public Dock, A	NW	W	W
Parker's Public Dock, B	NW	NW	NW
Parker's Public Dock, C	NW	W	W
Dock 9	NW	NW	NW
Basin 6 South	W	W	W
Davie's Launch Ramp, A	W	W	W
Station 31, A	W	W	W
Station 31, B	W	W	W
Station 21	W	W	W
Basin 1, Gwy 2	W	W	W
Basin 1, Gwy 4	W	W	W
Basin 2, Gwy 8	W	W	W
Basin 2, Gwy 11	W	W	W
Basin 3, Gwy 16	W	W	W
Basin 3, Gwy 19	W	W	W
Basin 4, Gwy 28	W	W	W
Basin 4, Gwy 31	W	W	W
Basin 5, Gwy 33	W	W	W
Basin 5, Gwy 34	W	W	W

KEY
W = Working
NW = Not Working
N/A = Not Applicable

# California, Los Angeles, Long Beach, Inner Harbor

June 2022

N 33° 46.3' / W 118° 12.6'

