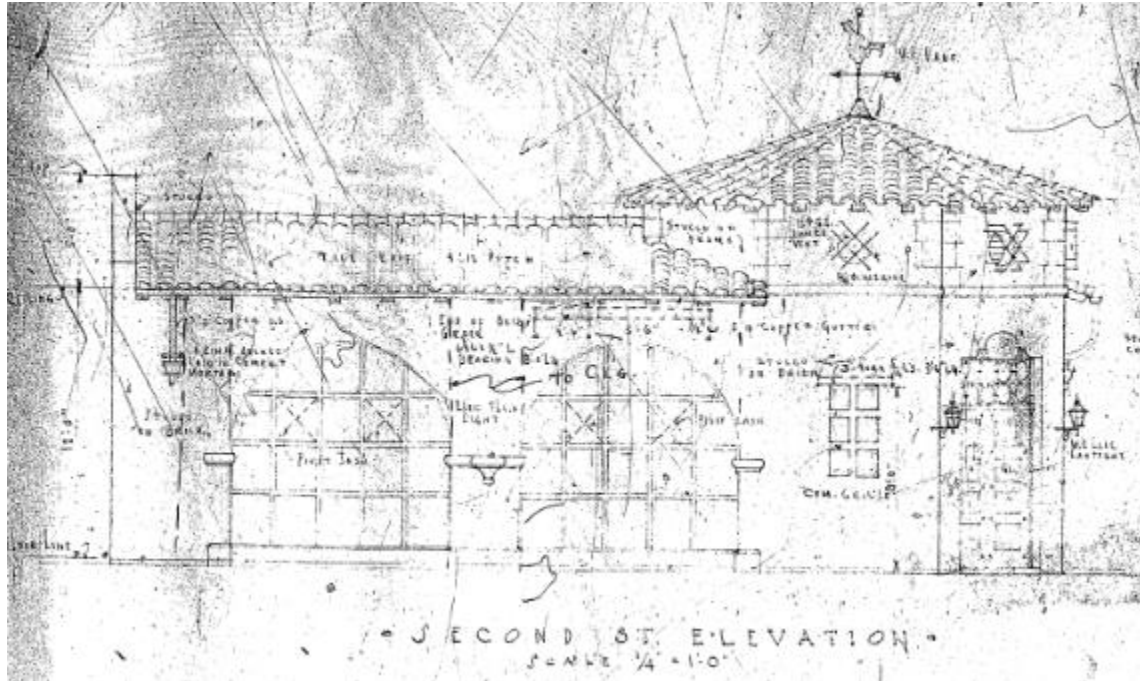
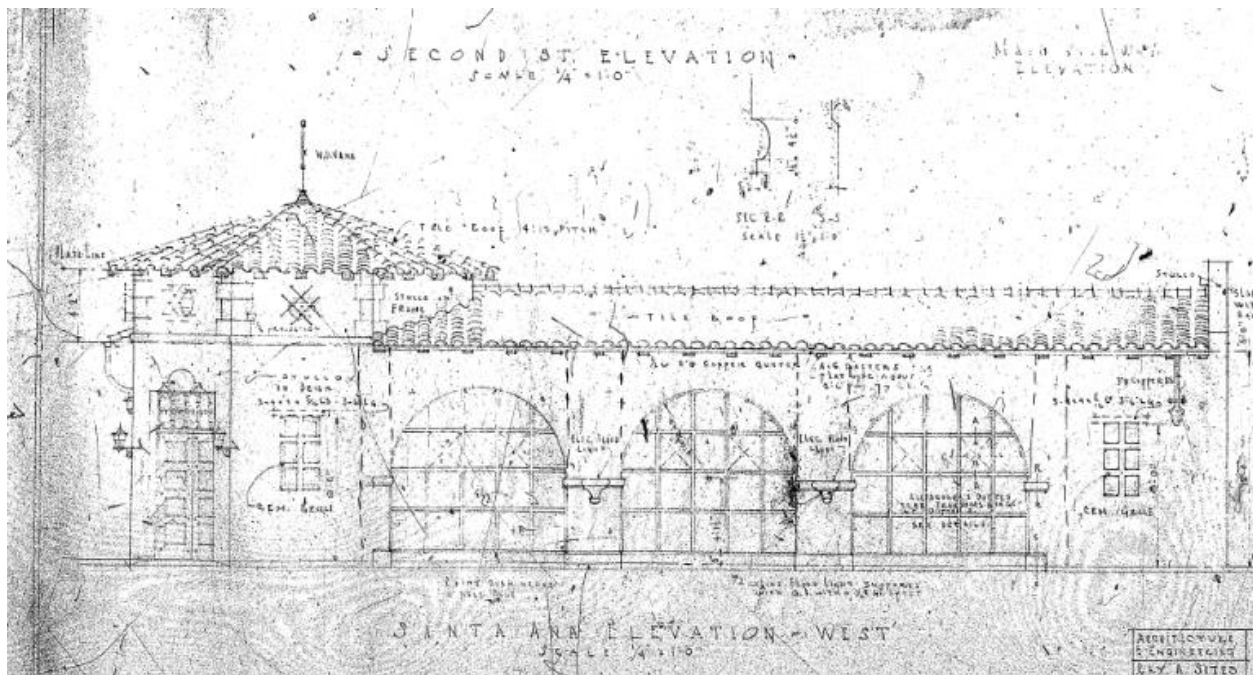


Historical Plans

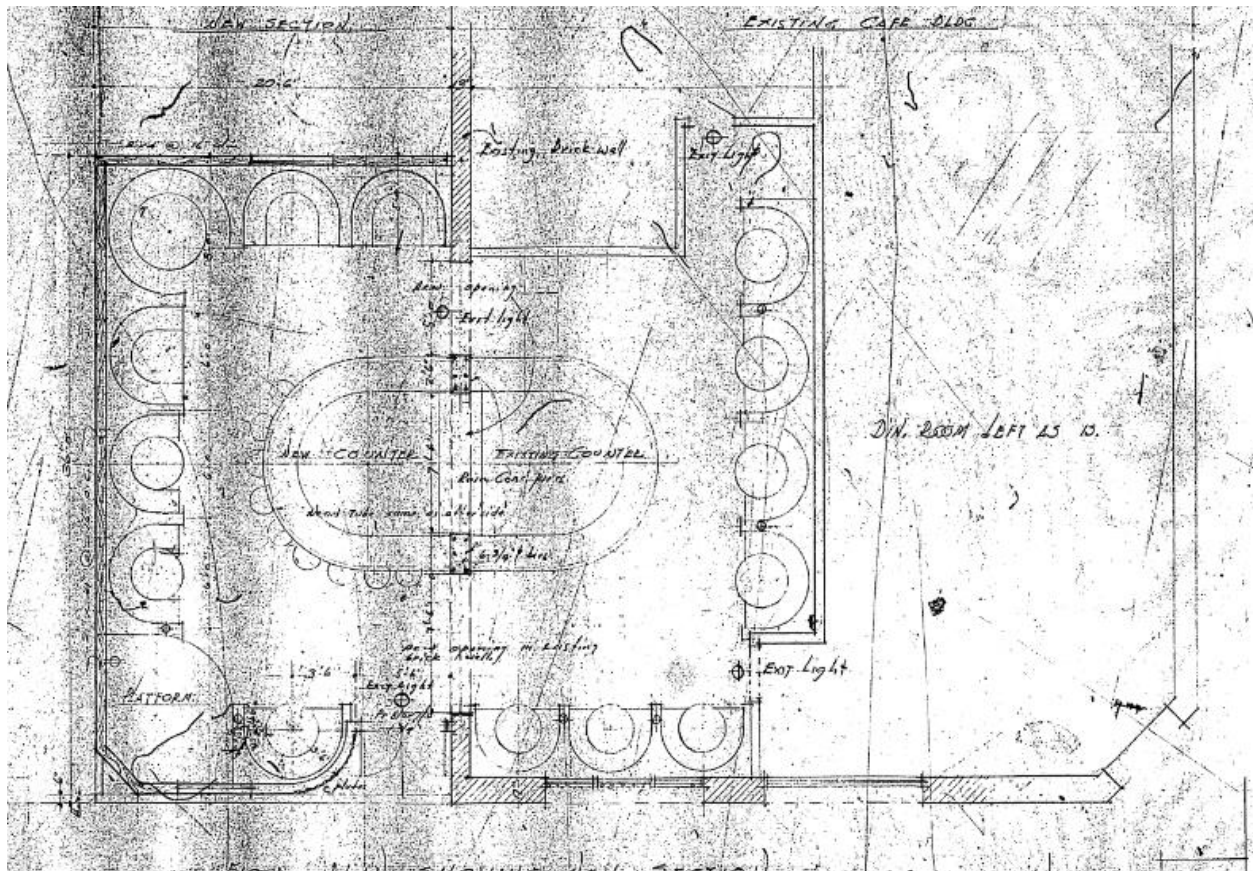
1929 – New restaurant



Second Street Elevation

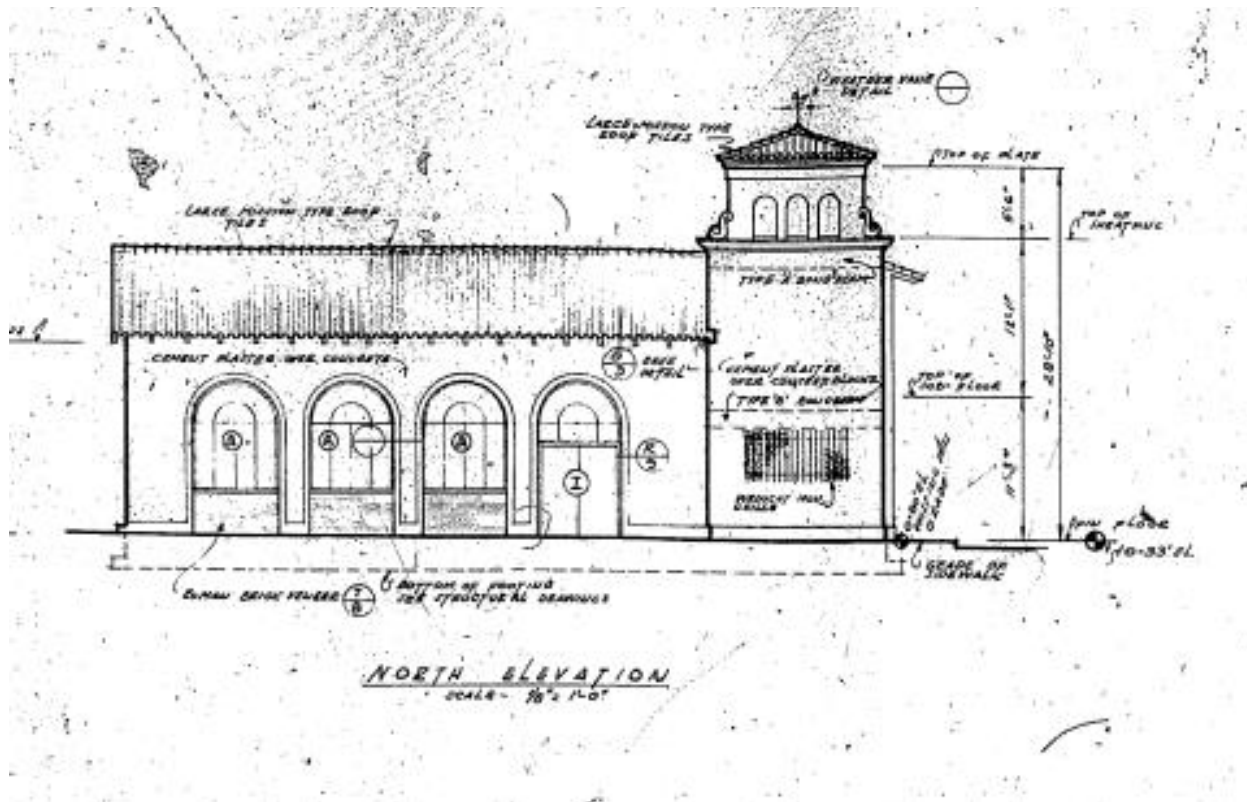


Santa Ana Elevation

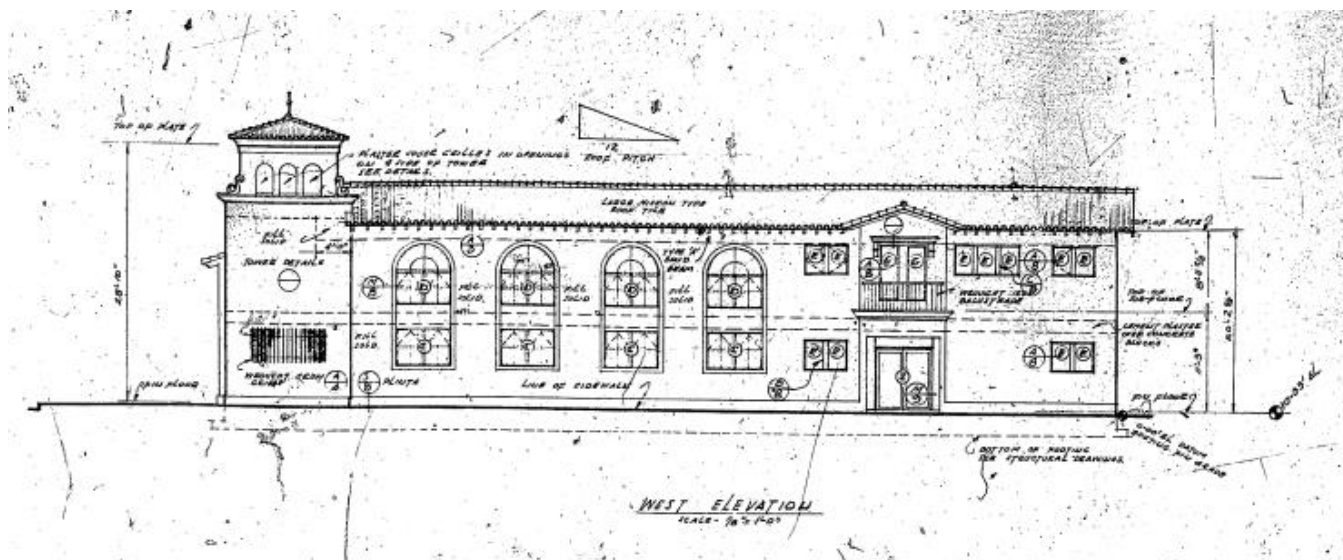


Floor Plan

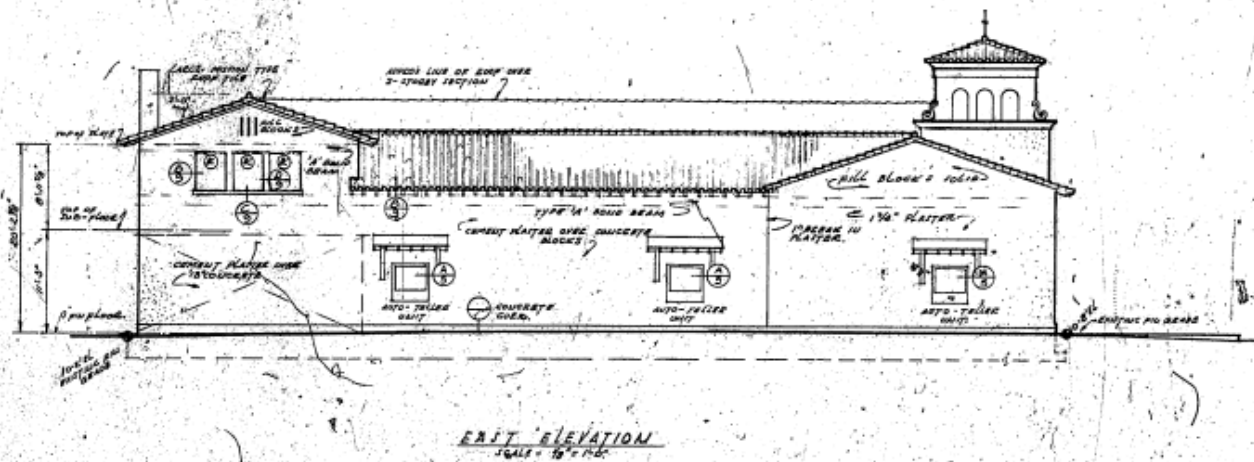
1950 – Second floor addition - Bank of Belmont Shore



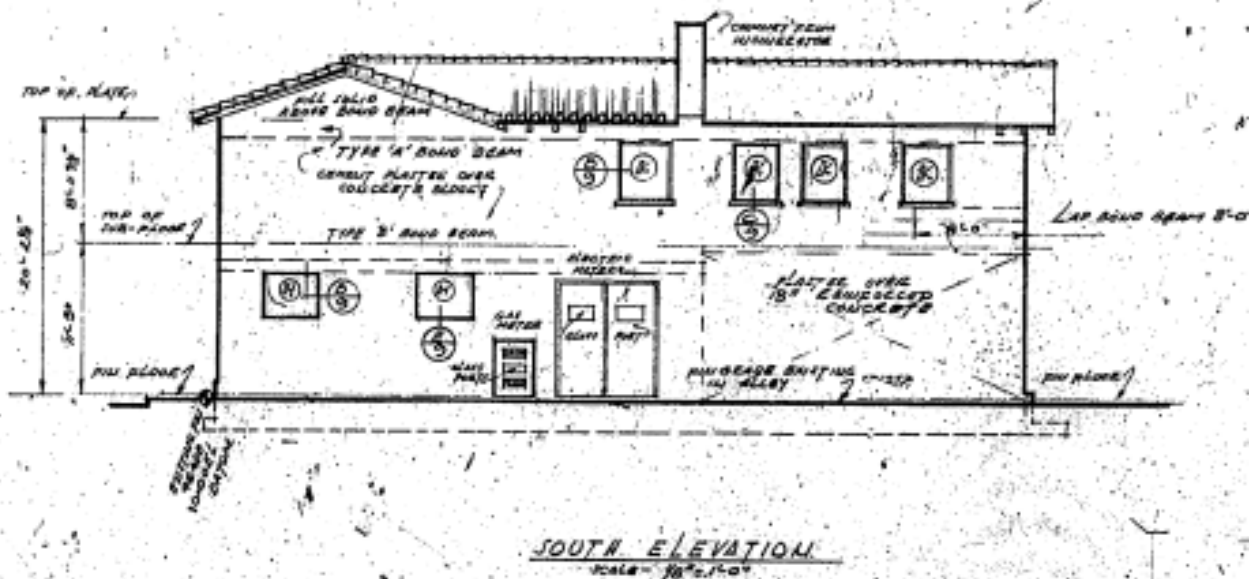
North Elevation (2nd Street)



West Elevation (Santa Ana)

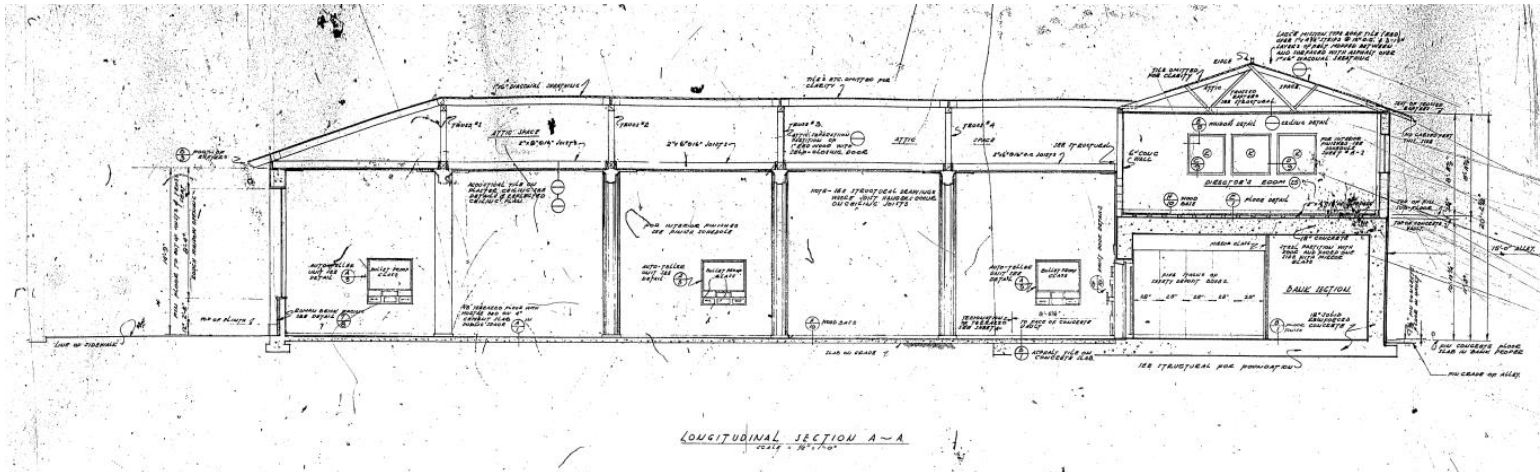


East Elevation (interior elevation)

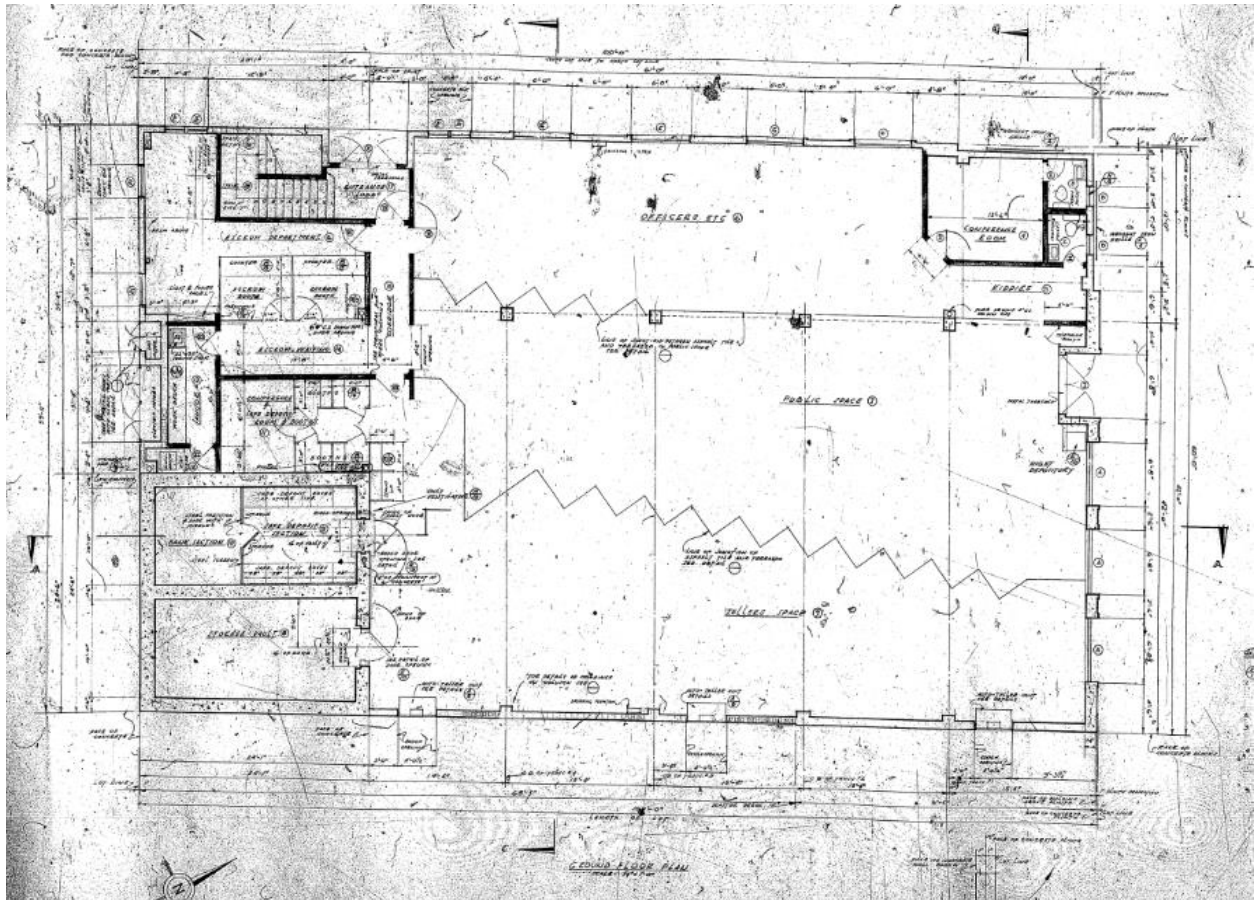


South Elevation (rear elevation)

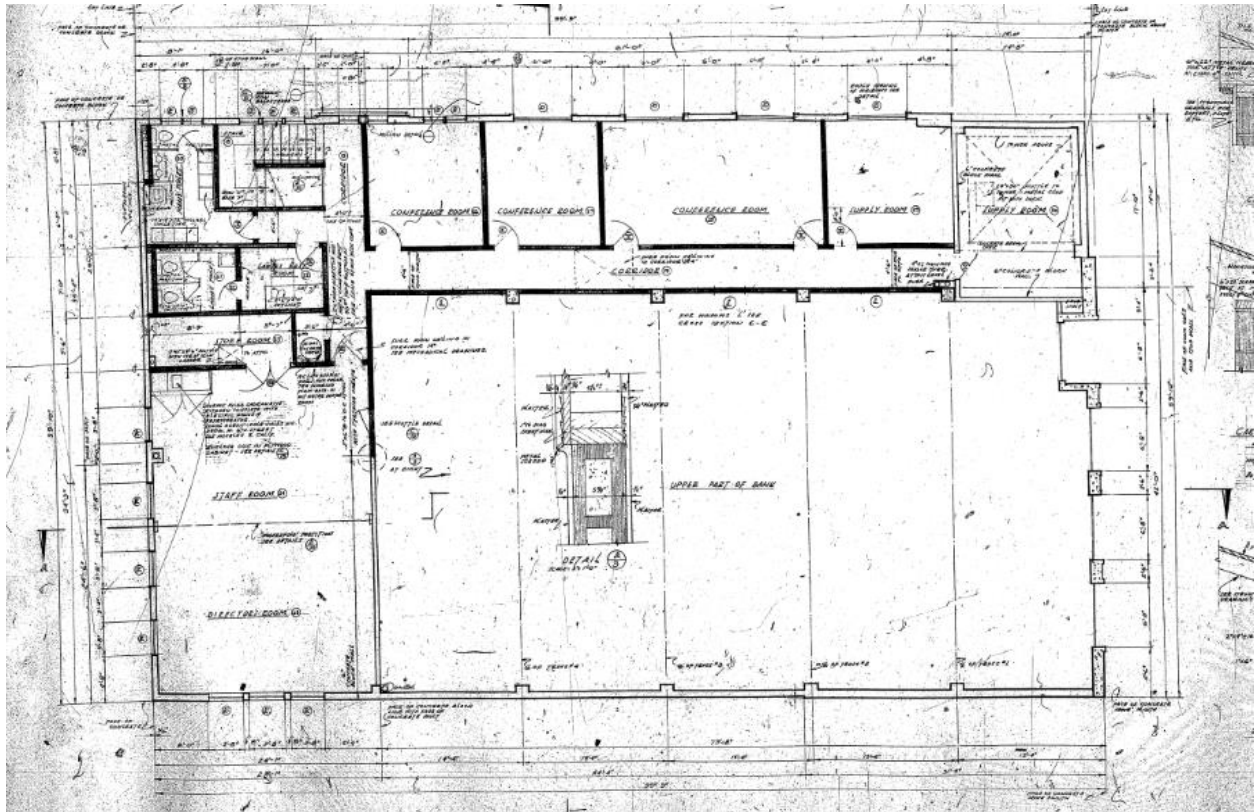




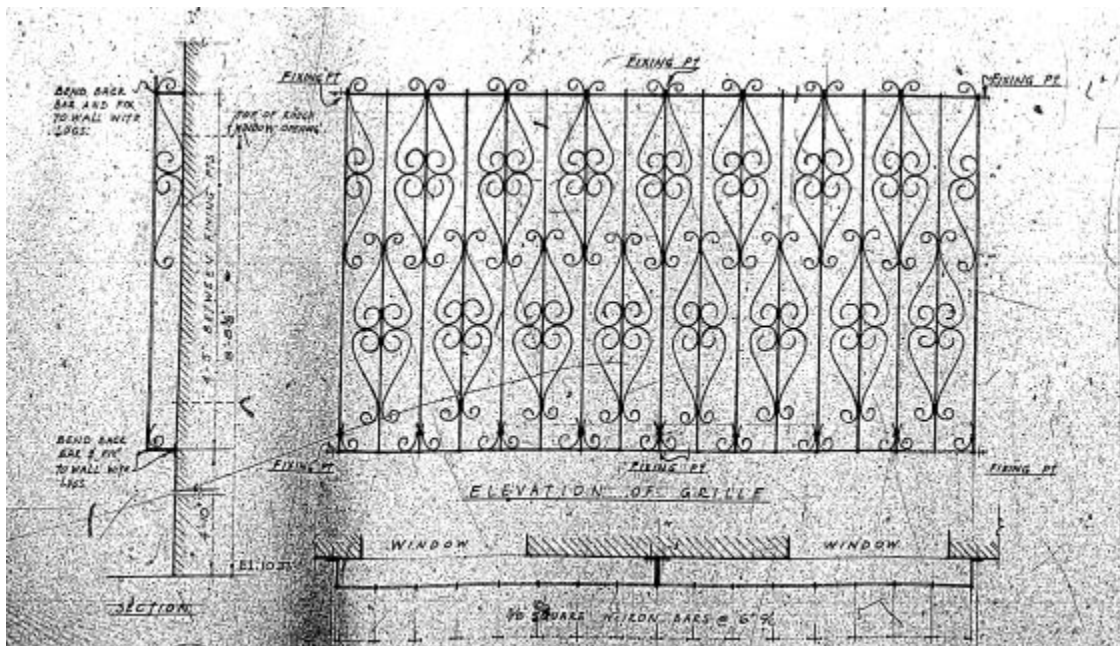
Section Plan



First Floor Plan



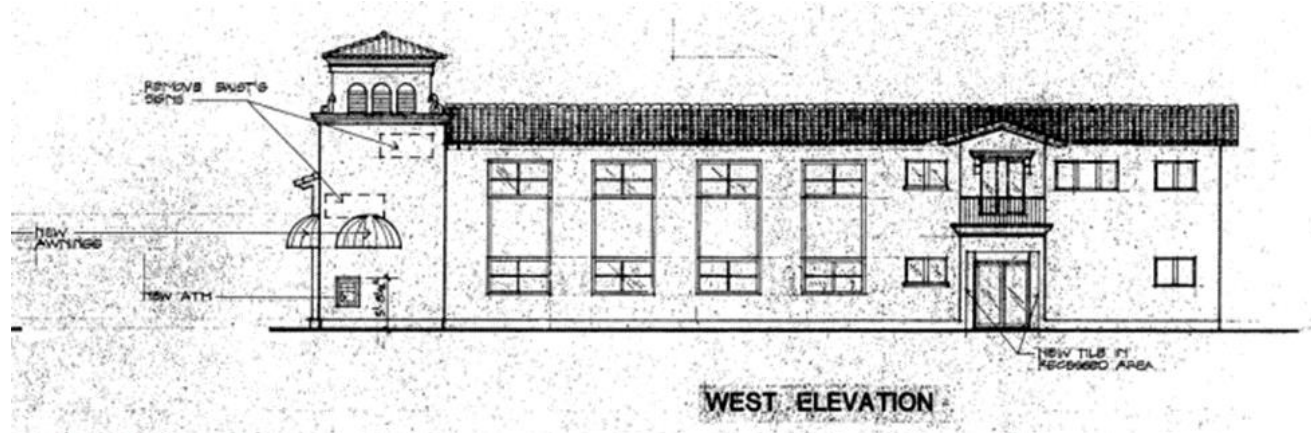
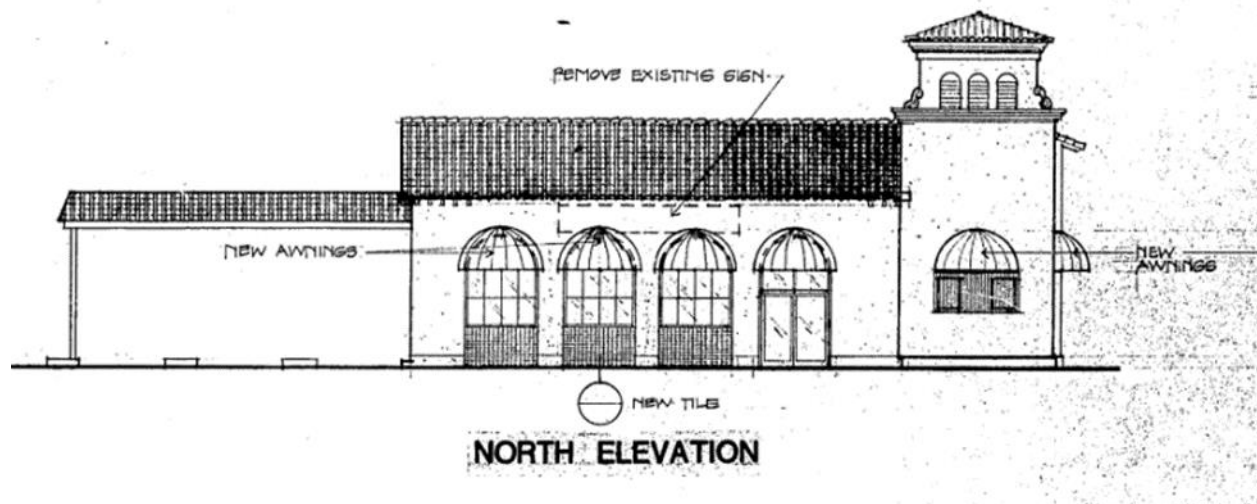
Second Floor Plan

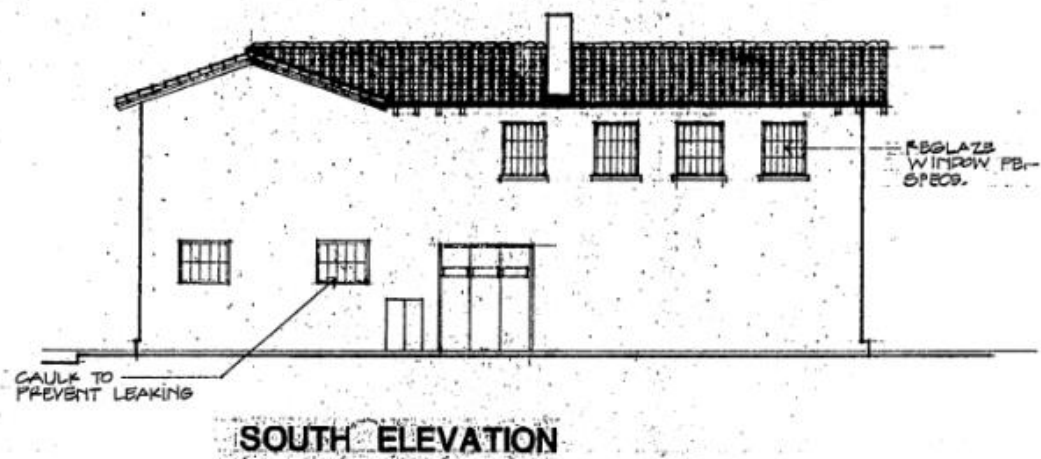
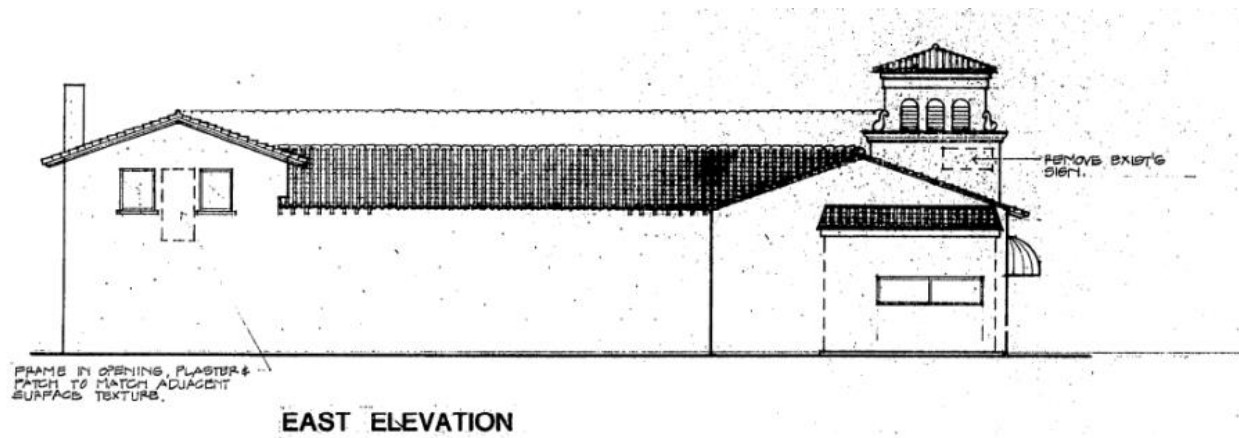


Grill Detail

1983 – Coast Bank Remodel

Modifications included new carport, new awnings, window modification on the east elevation. The arched windows on the west (Santa Ana) elevation were removed and square framed windows were installed. The tower was modified by the removal of the two windows and closing of the openings located on the Second Street elevation and the removal of the decorative wrought iron grills located on both Second Street and Santa Ana elevations. New ATM machines were installed on the tower along the Santa Ana elevation.

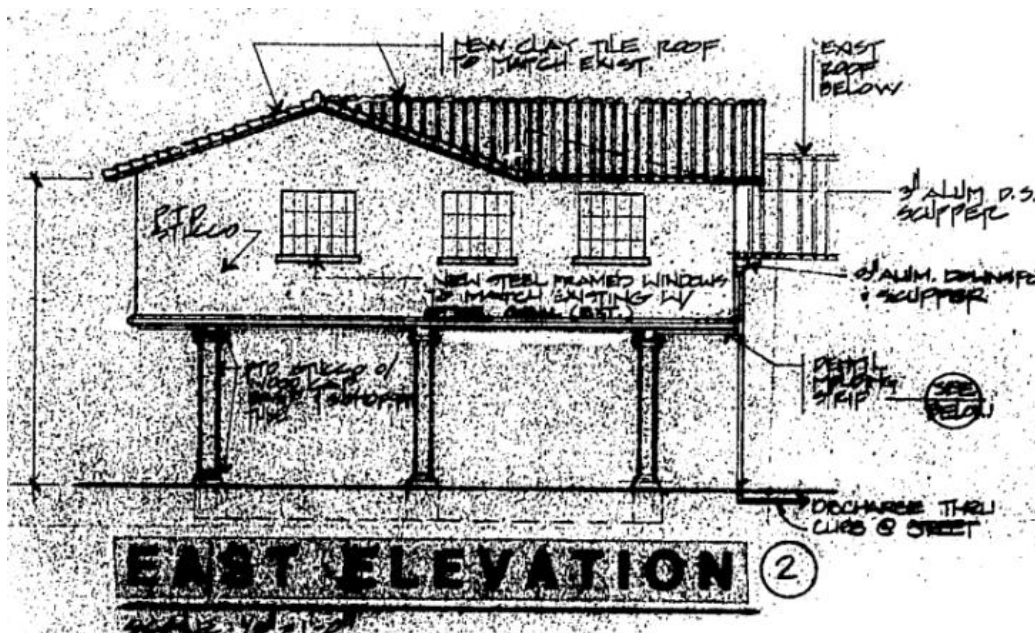
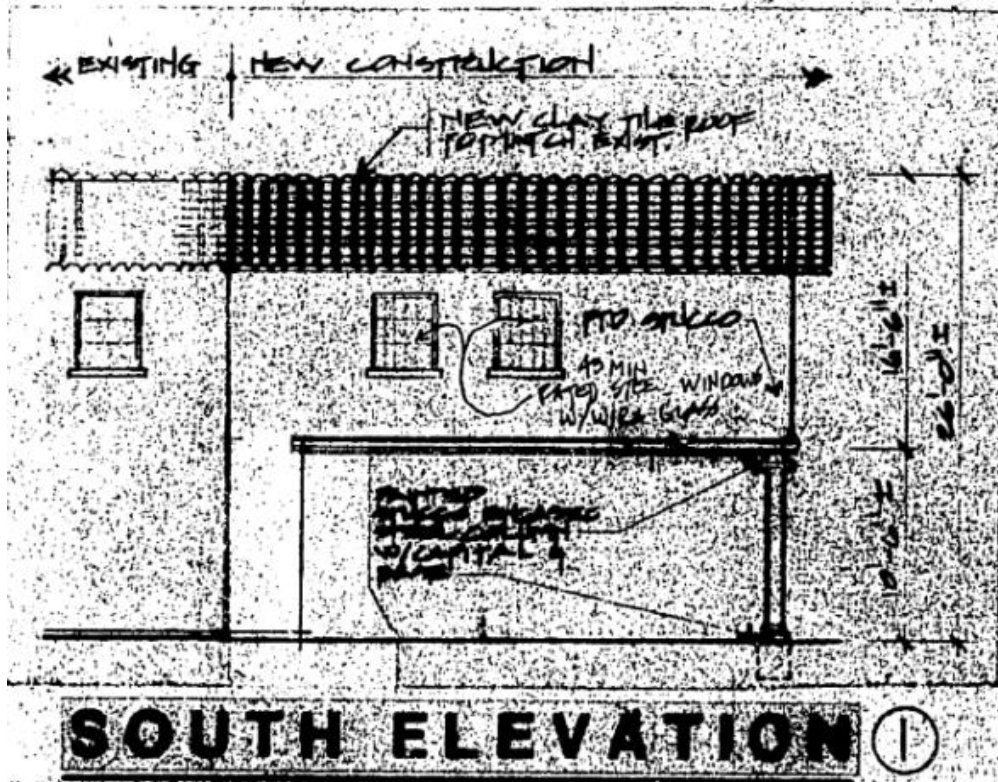


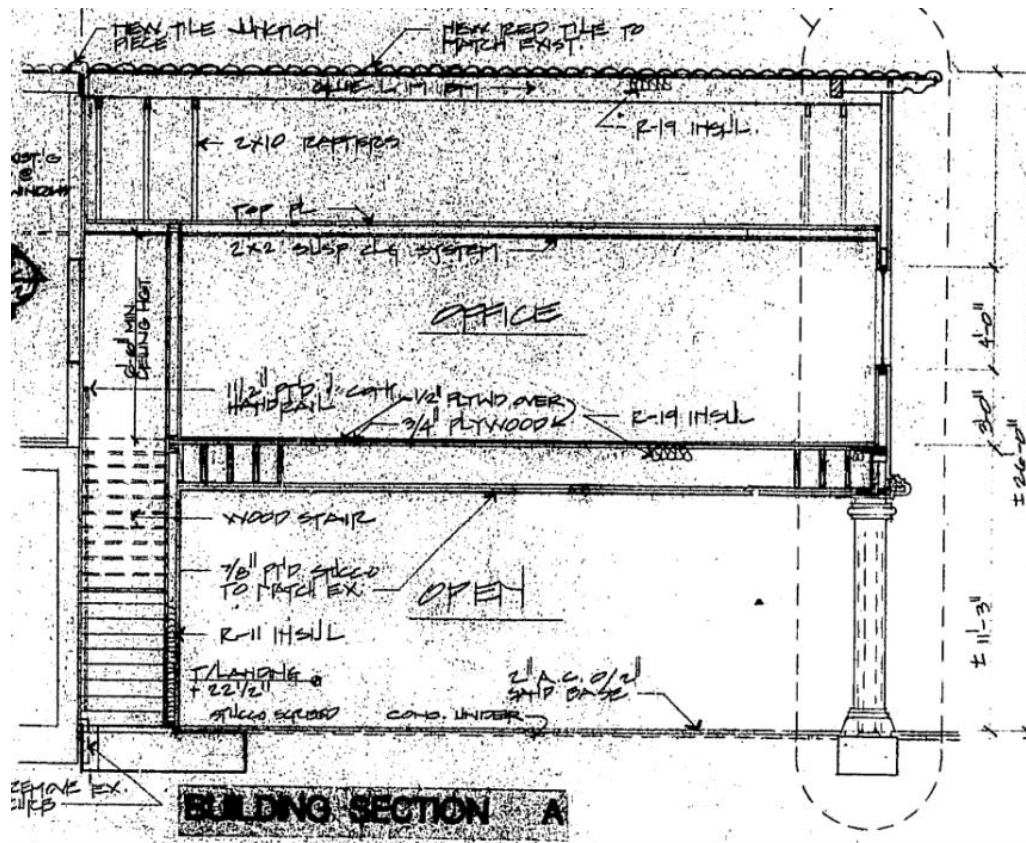




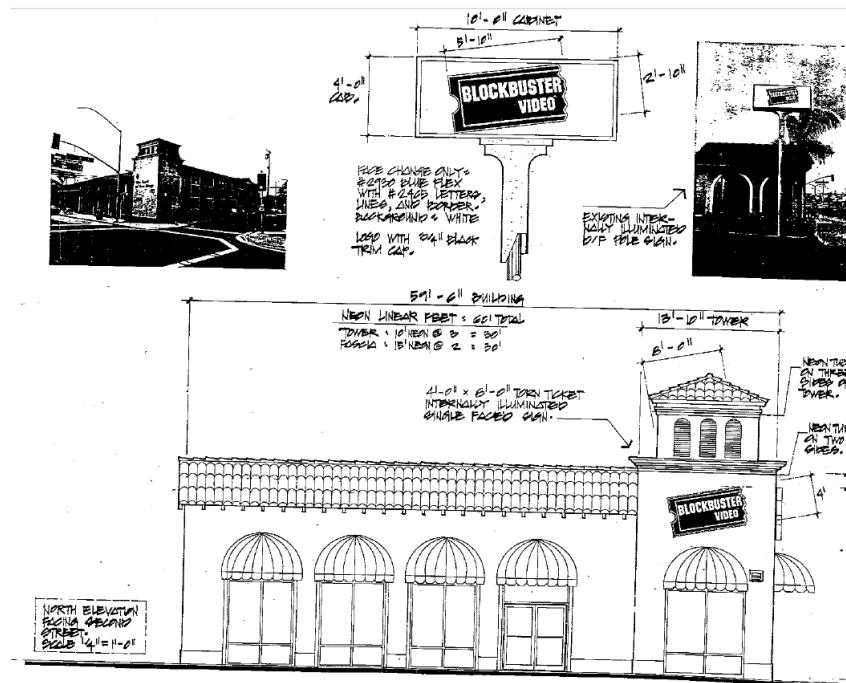
1986 – Coast Bank Addition

Modification included addition to second floor (cantilevered over parking lot).





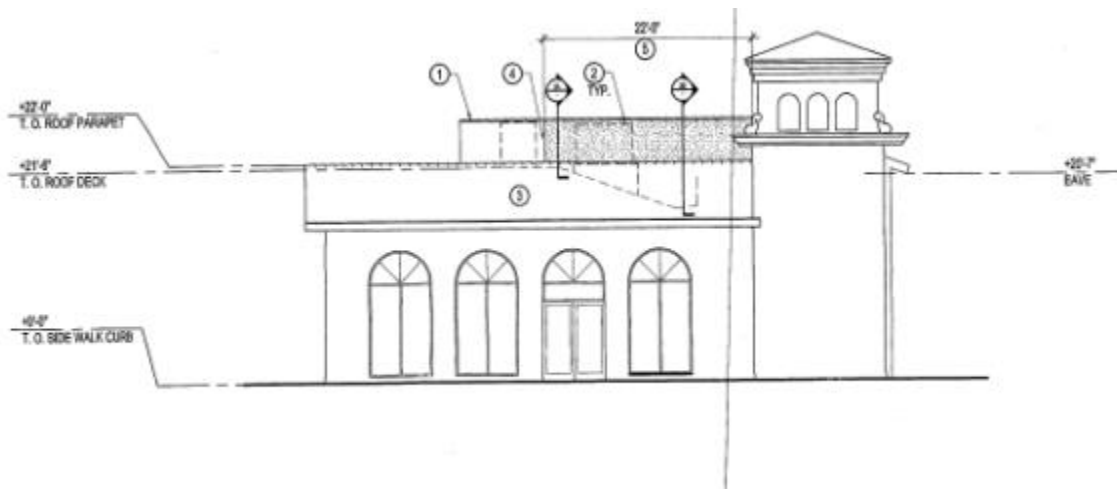
1995 – Interior Tenant Improvement for 1st Floor Blockbuster Video



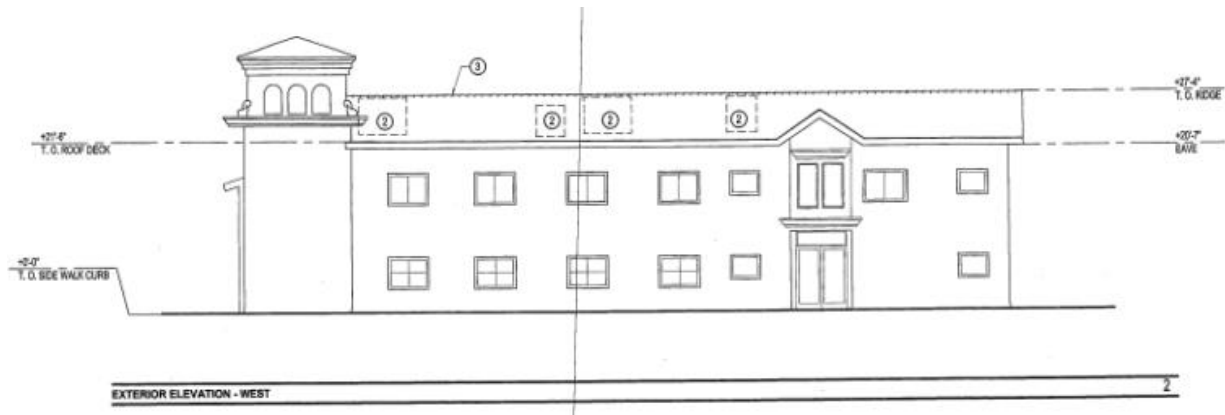


2011 – Citi Bank Remodel

Exterior modification consisted of new parapet to screen the mechanical equipment located on roof.



North Elevation (Second Street)



East Elevation (Santa Ana)