



LONG BEACH AIRPORT MONTHLY AIRPORT ACTIVITY REPORT
January-2005

Current Month and CY-T-D Statistics for Long Beach Airport

	January-2005			January-2005			
	2005	2004	%Change	2005	2004	%Change	
Total Passenger Traffic	233,505	223,387	4.5%	233,505	223,387	4.5%	
Enplaned Passengers							
	Load Factor						
Alaska	60%	7,077	4,764	48.6%	7,077	4,764	48.6%
America West Airlines	71%	8,127	6,091	16.2%	8,127	6,091	33.4%
American Airlines	62%	11,653	19,713	-40.9%	11,653	19,713	-40.9%
JetBlue Airways	85%	90,003	81,917	9.9%	90,003	81,917	9.9%
Total	79%	116,860	112,485	3.9%	116,860	112,485	3.9%
Airline Landings	1,026	1,065	-3.7%	1,026	1,065	-3.7%	
Aircraft Operations (FAA)							
Air Carrier	2,293	2,346	-2.3%	2,293	2,346	-2.3%	
Air Taxi	508	562	-9.6%	508	562	-9.6%	
General Aviation	21,706	23,939	-9.3%	21,706	23,939	-9.3%	
Military	24	82	-70.7%	24	82	-70.7%	
Total	24,531	26,929	-8.9%	24,531	26,929	-8.9%	
Air Cargo							
US Tons	4,120.46	4,679.6	-11.9%	4,120.46	4,679.6	-11.9%	
Metric Tons	3,737.25	4,244.4	-11.9%	3,737.25	4,244.4	-11.9%	

Airport has 39 daily commercial flights, the remaining 2 slots were relinquished by AAL and subsequently allocated to Jetblue per an earlier settlement agreement and 0 daily commuter flights.

Definitions:

Total Passenger Traffic – Total number of airline passengers both enplaned (departing) and deplaned (arriving).

Aircraft Operations – Aircraft takeoff, landing, or transition through the airspace controlled by the FAA's Long Beach air traffic control tower.

Air Carrier – A scheduled carrier, certificated under FAA Regulations (FAR) Parts 121, 125 or 135, max. takeoff weight of over 75,000 lbs.(passengers or cargo).

Air Taxi – Aircraft that provide public transportation of persons and/or property on-demand.

General Aviation – Aviation activity other than scheduled air carriers flights, flights by industrial operators or by charter and flights by public aircraft.

Air Cargo – Cargo carried by aircraft, both inbound and outbound.



City of Long Beach
Working Together to Serve

Memorandum

Date: February 17, 2005
To: Airport Advisory Commission
From: Ken Ashmore, Operations Specialist, Airport Bureau
Subject: NOISE STATISTICS FOR JANUARY 2005

Noise Complaints

Type of Operator	January 2005	December 2004	January 2004
Air Carriers	170	123	177
General Aviation Jets	35	35	35
General Aviation Props	10	9	15
Industrial	0	2	0
Unknown Source	0	0	0
Subtotal	215	169	227

Other Operations	January 2005	December 2004	January 2004
General Aviation Helicopters	5	0	4
Military/Public/Air Ambulance Helicopters	6	5	4
Military/Public/Air Ambulance Jets, Props	9	39	1
Subtotal	20	44	9

Grand Total	235	213	236
--------------------	------------	------------	------------

- Number of complainants: 64
- 24 of the 235 complaints related to operations that were in violation of the City's noise compatibility ordinance.

Aircraft operations receiving five or more complaints

Date	Time	Operator	Type	Arrival/Departure	Runway	dB SENEL	Complaints
01/09/05	10:11 PM	JetBlue	A320	Departure	30	95.5	10
01/24/05	10:41 PM	JetBlue	A320	Departure	30	91.7	8
01/01/05	10:59 PM	JetBlue	A320	Departure	30	87.7	6
01/05/05	10:48 PM	JetBlue	A320	Departure	30	93.6	6
01/08/05	08:46 PM	JetBlue	A320	Arrival	12	93.4	6
01/09/05	10:08 PM	JetBlue	A320	Departure	30	94.4	6
01/03/05	11:53 PM	JetBlue	A320	Departure	30	93.9	5
01/05/05	10:59 PM	JetBlue	A320	Departure	30	91.1	5
01/08/05	08:49 PM	JetBlue	A320	Arrival	12	93.8	5
01/21/05	10:14 PM	JetBlue	A320	Departure	30	90.3	5

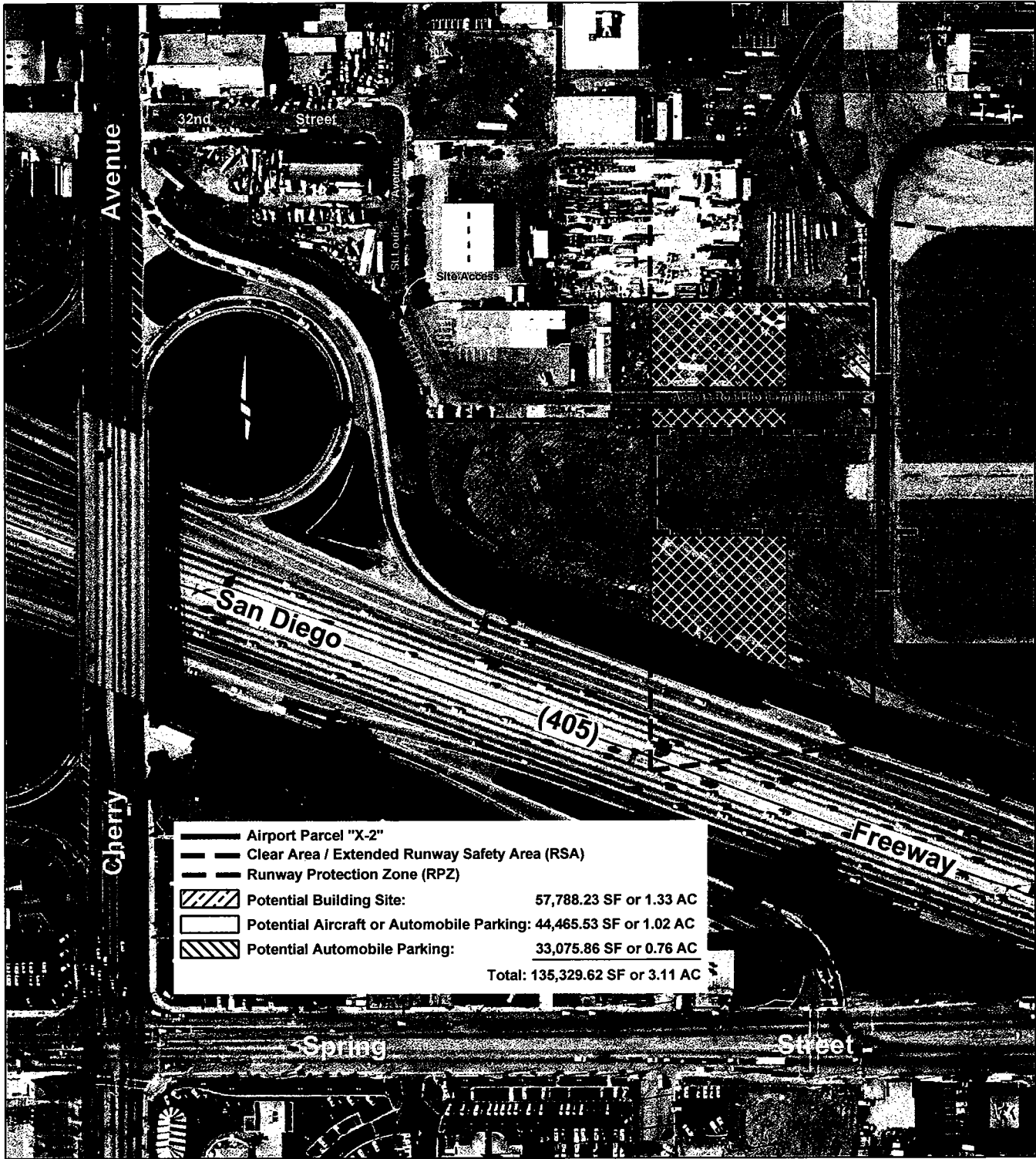
Noise Violations

Violation Number	January 2005	December 2004	January 2004
1st	7	4	12
2nd	2	2	1
3rd	0	0	0
4^{th+}	9	2	11
Total	18*	8	24

- *Equates to 0.07% of the Airport's 24,531 aircraft operations during the month.
- 0.40% of air carrier operations (9 of 2,293) resulted in noise violations.

Violations in the "4^{th+}" category

Date	Time	Operator	Type	Arrival/ Departure	Runway	dB SENEL
01/01/05	11:09 PM	JetBlue	A320	Departure	30	95.5
01/03/05	11:53 PM	JetBlue	A320	Departure	30	93.9
01/03/05	07:11 AM	American	MD80	Departure	30	105.2
01/04/05	11:11 PM	JetBlue	A320	Arrival	25R	93.4
01/05/05	05:35 PM	American	MD80	Departure	25R	104.8
01/06/05	11:31 PM	JetBlue	A320	Arrival	25R	91.7
01/13/05	11:27 PM	JetBlue	A320	Arrival	25R	93.7
01/15/05	11:43 PM	JetBlue	A320	Departure	30	90.0
01/24/05	12:44 AM	JetBlue	A320	Arrival	25R	94.0



s.smith/public works/engineering 2-16-05

CITY OF LONG BEACH - CALIFORNIA
 DEPARTMENT OF PUBLIC WORKS - CHRISTINE F. ANDERSEN, DIRECTOR

Development Area Map for
AIRPORT PARCEL "X-2"
 North of San Diego (405) Freeway and East of Cherry Avenue