



# CITY OF LONG BEACH

DEPARTMENT OF PARKS, RECREATION & MARINE

**C-20**

2760 N. Studebaker Road, Long Beach, CA 90815-1697

(562) 570-3100 • FAX (562) 570-3109

www.lbparcs.org

September 18, 2007

HONORABLE MAYOR AND CITY COUNCIL  
City of Long Beach  
California

## RECOMENDATION:

Receive and file the recommendation of the Parks and Recreation Commission that four sites, Scherer Park, Veterans Park, Golden Avenue at Wardlow Road, and Drake/Chavez Greenbelt, provide viable locations to develop dog parks in the western half of Long Beach. (Districts 1, 2, 6, 7, 8)

## DISCUSSION

On March 20, 2007, the City Council requested that the City Manager work with the Parks and Recreation Commission (Commission) to identify possible park locations for a dog park in the western half of Long Beach, and report back to the Council on the feasibility of creating such a dog park. On April 19, 2007, the Commission referred the request to their Capital Improvement Projects (CIP) Committee for review and analysis of potential sites. On July 19, 2007, the CIP Committee recommended two sites to the Commission. On August 16, 2007, the full Parks and Recreation Commission met and recommended four sites that are viable locations for dog parks in the western half of the city.

To begin evaluating locations for a potential dog park(s) in the western half of Long Beach, staff began by developing criteria for dog park locations based upon the experience of the dog park in Recreation Park, and the dog zone on the beach in Belmont Shore. The resulting criteria were:

- **Size:** Dog parks need one acre to 1.5 acres in order to provide running space, a waiting/resting area, and separate sections for large and small dogs. The park sites in the western half of Long Beach that are five or more acres are Houghton, Ramona, DeForest, Ed "Pops" Davenport, Scherer, Cherry, Los Cerritos, Silverado, Veterans, Hudson, Admiral Kidd, Cesar E. Chavez, Bixby, and Martin Luther King, Jr. The undeveloped park sites of Golden Avenue at Wardlow Road and the Drake/Chavez Greenbelt could also accommodate a dog park.

- **Recreational Impact:** Dog parks should not displace existing active recreation uses. The 1.5 acre dog park size was overlaid on aerials of the above parks in order to determine where active recreation displacement would not occur. It was determined that a dog park would not overlap existing active recreation uses at Scherer and Veterans Parks, and at the Golden Avenue at Wardlow Road and Drake/Chavez Greenbelt sites (Attachments A-D).
- **Parking:** Dog parks can be regional facilities, so the dog park should have available parking. All four sites mentioned above have parking or the capability of adding parking. Scherer and Veterans Park sites have the capability of providing the closest parking. Veterans Park would need permission to use the Blue Line overflow parking lots. Golden Avenue at Wardlow Road has an existing parking lot and Drake/Chavez Greenbelt would need to build parking.
- **Noise:** Dog parks can be noisy, so the dog park should not be close to residential or other noise-sensitive uses. All four sites have some separation from residential uses. The Drake/Chavez Greenbelt site provides the best separation, as it is two blocks from residential use, tucked under a freeway bridge, and adjacent to the Los Angeles River. Veterans Park has about a block of separation from residential use (300-600'), the Golden Avenue at Wardlow Road site has the width of a road (60'), and Scherer Park has the width of a storm drain box channel and driveway (50').
- **Amenities:** Dog parks have limited improvement requirements, but do need fencing, water, shade, and seating. Scherer and Veterans Parks have water and shade. All sites currently need benches. Three of the four sites need fencing; Golden Avenue at Wardlow Road is fenced on the exterior.

This matter was reviewed by Deputy City Attorney Gary J. Anderson on September 6, 2007, and Budget and Performance Management Bureau Manager David Wodynski on August 31, 2007.

#### TIMING CONSIDERATIONS

There are no specific timing considerations, as the development of one or more dog parks in the western half of Long Beach is at the City Council's discretion. Design studies that could include a dog park design will be underway in FY 2008, for Scherer Park, Golden Avenue at Wardlow Road, and the Drake/Chavez Greenbelt sites.

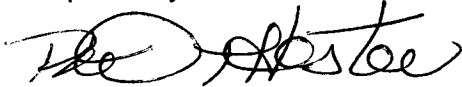
FISCAL IMPACT

No funds have been budgeted to develop or maintain one or more dog parks. The capital expenditure for building a dog park could be included within the scope of the improvements being planned for Scherer Park, and the Golden Avenue at Wardlow Road, and Drake/Chavez Greenbelt sites. The capital costs of constructing a dog park in an existing park are relatively low, consisting of fencing, drinking fountains, and benches.

SUGGESTED ACTION:

Approve Recommendation.

Respectfully submitted,



PHIL T. HESTER  
DIRECTOR OF PARKS, RECREATION AND MARINE

PTH:DLE

Attachments: A-D

APPROVED:  
  
\_\_\_\_\_  
ANTHONY W. BATTS  
CITY MANAGER





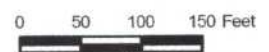
# Potential Dog Park Scherer Park

ATTACHMENT A  
0 50 100 150 200 Feet





### Potential Dog Park Veterans Park





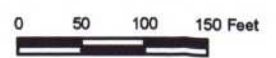


1.7 acres

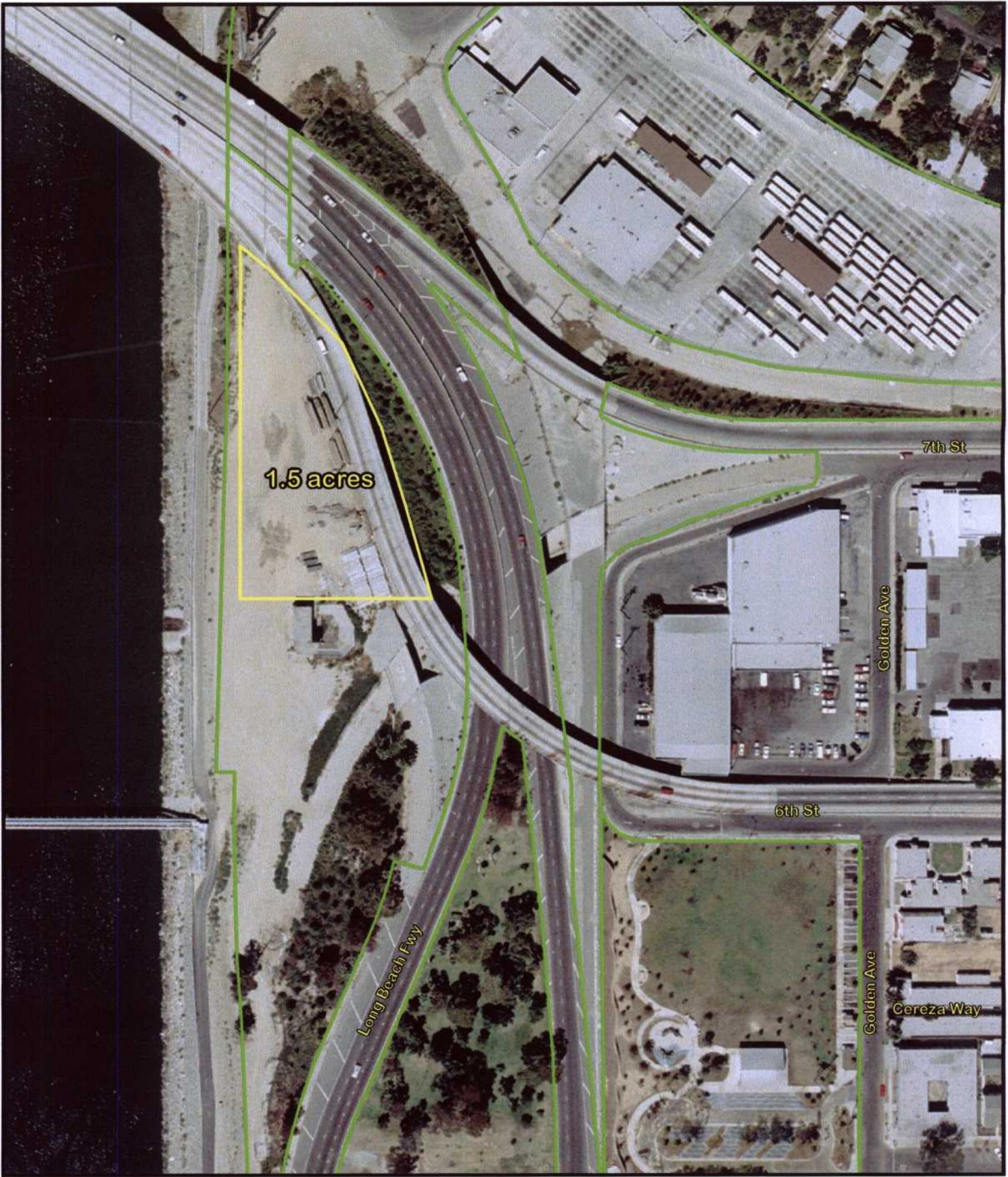


# Potential Dog Park Wardlow Rd. and Golden Ave.

ATTACHMENT C







1.5 acres

Long Beach Fwy

7th St

Golden Ave

6th St

Golden Ave

Cereza Way



Potential Dog Park  
Drake / Chavez Greenbelt

