



Building A Better Long Beach

January 4, 2010

REDEVELOPMENT AGENCY BOARD MEMBERS
City of Long Beach
California

RECOMMENDATION:

Approve and authorize the Executive Director to enter into a contract with Yakar Corporation in an amount not to exceed \$243,188.00 for the construction of Rosa Parks Park. (Central – District 6)

DISCUSSION

The Central Long Beach Strategic Guide for Development has identified that the Central Long Beach Redevelopment Project Area is far underserved in terms of recreational and open space opportunities. To address this need, the Redevelopment Agency (Agency) acquired an 11,318-square-foot property at the intersection of 15th Street and Alamitos Avenue (Site) to create a passive neighborhood park and remove a blighted commercial building and a billboard.

Agency staff has worked collaboratively with the Departments of Parks, Recreation and Marine and Public Works to design Rosa Parks Park (Park) at this Site to build on the intersection and pedestrian right-of-way improvements completed by Public Works in 2009. The Park improvements will include a walking path, benches and an enhanced seating area for the bus stop at the northeast corner of Alamitos Avenue and 15th Street (Exhibit A - Rosa Parks Park Design). The Agency has also engaged the Arts Council for Long Beach and Long Beach Transit to add a public art component to the bus stop area of the Park that will pay tribute to Rosa Parks.

Sustainable features were also incorporated into the Park design. The Park will feature permeable surfaces, drought-tolerant landscaping, a natural storm water filtration system and a solar powered irrigation controller. Long Beach Transit will also enhance the sustainability of the Park by potentially adding a solar powered Transmart Pole that will provide real time updates to bus passengers. The pole would be installed once ridership levels rise after the Park's opening. These improvements will aesthetically enhance the intersection while creating a safer pedestrian environment.

The Park design was presented to the Parks and Recreation Commission on October 16, 2008 and to the Central Project Area Committee on November 5, 2009. The final city departmental approval was received on November 12, 2009.

REDEVELOPMENT AGENCY BOARD MEMBERS

January 4, 2010

Page 2 of 2

The Plans and Specifications for the construction of the Park were advertised for bid on November 25, 2009, and bids were opened on December 18, 2009. A total of 17 bids were received, and Yakar Corporation was identified as the lowest responsible bidder. The proposed contract amount of \$243,188.00 includes a 25 percent contingency clause to cover any additional work that may become necessary during the course of construction. In the event that additional work is necessary, the contract will provide the Executive Director the ability to approve change orders for additional work not to exceed the 25 percent contingency. Although not anticipated, any contract change orders that would exceed the 25 percent contingency will be brought before the Agency Board for further consideration. Construction is expected to begin in February 2010.

Upon construction completion, the Department of Parks, Recreation and Marine will be responsible for the maintenance of the Park. The Agency Board and City Council approved resolutions making the necessary findings of benefit as required by California Redevelopment Law on September 12, 2005, and November 1, 2005, respectively, to provide public improvements on the Site. Appropriation for the project is included in the Central Redevelopment Project Area's Fiscal Year 2010 Budget.

SUGGESTED ACTION:

Approve recommendation.

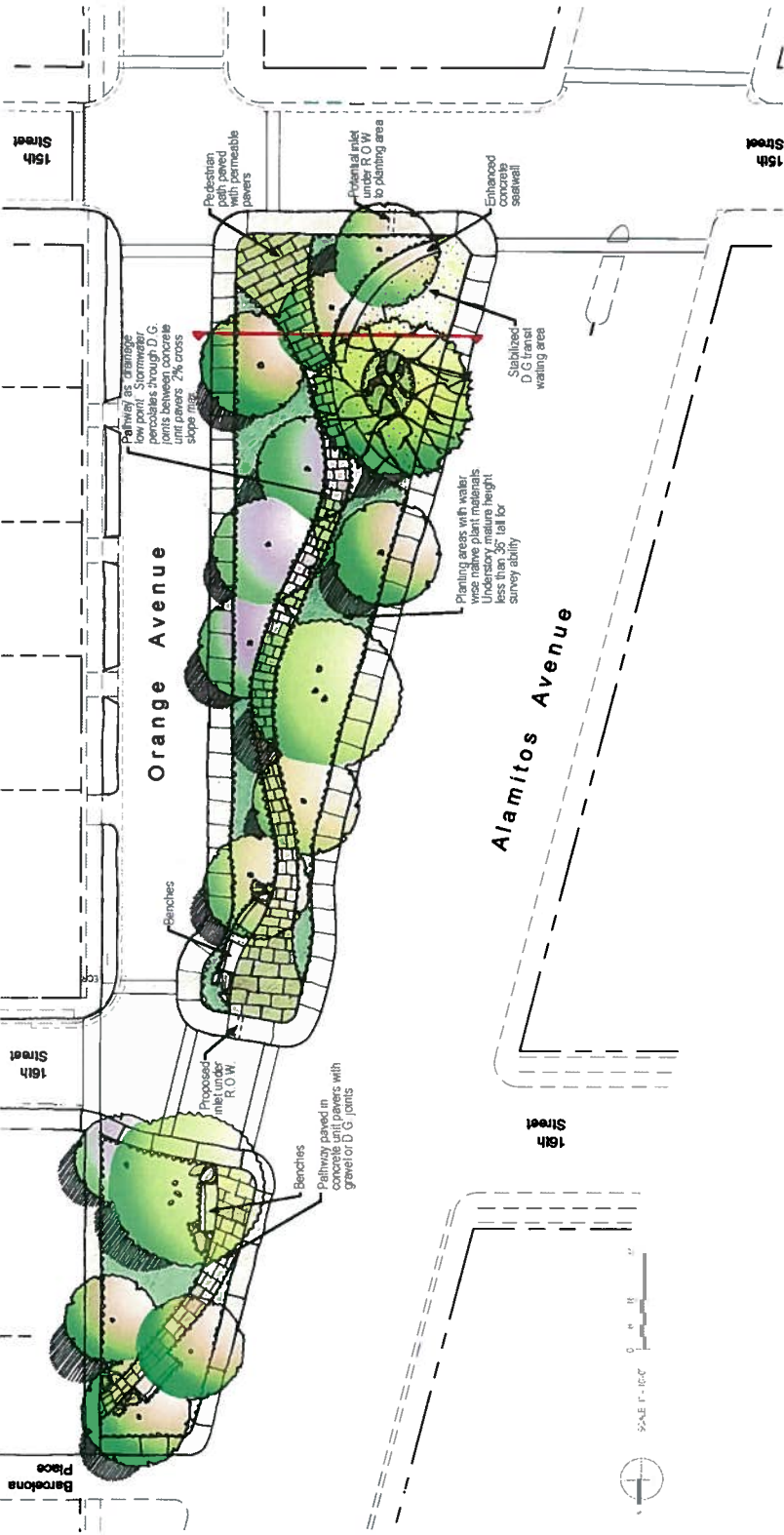
Respectfully submitted,



AMY J. BODEK
ASSISTANT EXECUTIVE DIRECTOR

AJB:DSW:EM

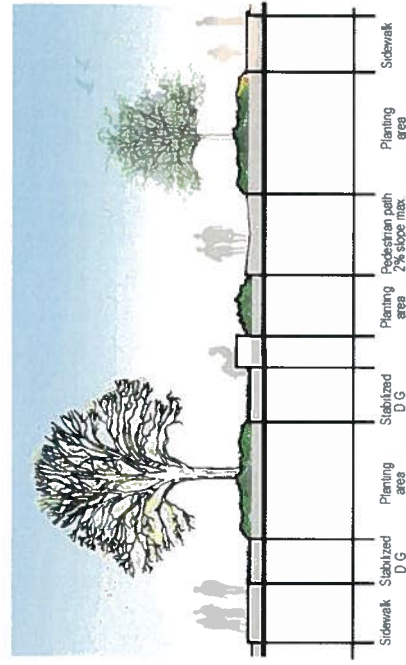
Attachment: Exhibit A – Rosa Parks Park Design



15th and Alamos provides public open space designed to enhance community pride while fostering the physical and social well-being of adjacent residents.

The landscape design transforms existing vacant lots, cut-off from the surrounding neighborhood by surrounding streets into an inviting community amenity offering opportunities for people to observe and interact with each other and the landscape. Native California Sycamores and water-wise Strawberry Trees shade perimeter sidewalks and a strolling path that acts through both pieces of the park, enhancing pedestrian walkability. Transit users can find respite from the sun and passing traffic in a shaded waiting area defined by concrete seat walls and decomposed granite paving. Low growing, low-maintenance native shrubs and groundcovers will cover the most of the site with vibrant color and fragrance where there is currently only dirt.

In addition to providing a physical outdoor amenity to the community the landscape design also provides an opportunity to demonstrate design practices that address environmental issues like storm water management, resource conservation and the importance of native planting. The pathway that winds through the center of the site works with the grading of adjacent planting areas to allow the collection and disposal of storm water on-site. Paved in permeable concrete pavers, the pathway will allow storm water to percolate into the ground instead of flowing directly into storm drains that flush urban pollutants into the sea. Using a palette of native and climate-adapted plant materials, attracts wildlife and enhances the sensory impact of the landscape experience with color, texture and aroma, while introducing an alternative, resource-conserving landscape alternative to local homeowners. The design of this area furthers a physical and aesthetic connection to the planted island on the east side of Alamos to the north of this site.



15th & Alamos Community Open Space

8.07.08

15th 10-11-07