

31455

AMENDMENT NO. ONE TO CONTRACT NO. 31455

RE: **Renewal of PA-03009, Contract No. 31455 to Furnish and Deliver Custodial Paper Products for the City of Long Beach (BPLB1000027)**

This Amendment to Contract No. 31455 is made and entered as of February 8, 2011, by and between the CITY OF LONG BEACH, a municipal corporation, and **P&R Paper Supply Co. (Contractor)**

Contract No. 31455 is amended by mutual agreement of the parties and as indicated below by a check or other mark preceding the appropriate amendment:

- 1. The term is extended to August 1, 2011.
- 2. \$225,000 has been added to the 1st renewal term for a total ("not to exceed") amount of \$675,000.
- 3. Prices during this period shall remain firm.
- 4. The price for certain items shall be increased as shown on Exhibit "A", which is attached hereto and incorporated herein by this reference.
- 5. The price for certain items shall be decreased as shown on Exhibit "A", which is attached hereto and incorporated herein by this reference.
- 6. The discount offered to the City is increased by ____ %
- 7. The items or locations identified on Exhibit "B", which is attached hereto and incorporated herein by this reference, are hereby deleted from the Contract.
- 8. The locations identified on Exhibit "B", which is attached hereto and incorporated herein by this reference, are hereby added to the Contract.
- 9. Current permits, licenses, insurance and other required information are attached as Addendum No. 1.

Except as expressly amended above, all terms and conditions in this Contract are ratified and confirmed and remain in full force and effect. Executed with all formalities required by law as of the date first stated above.

Attach Notary if Out-of-State Contractor

CONTRACTOR:

Joseph A. Maiberg
(Signature)

Joseph Maiberg
(Print / Type Name)

President / Vice President / Secretary / Treasurer
(circle one)

CEO

CONTRACTOR:

Catherine M. Carter
(Signature)

Catherine M. Carter
(Print / Type Name)

President / Vice President / Secretary / Treasurer
(circle one)

Controller

THE CITY OF LONG BEACH:

Assistant City Manager

By: _____

[Signature]

City Manager

EXECUTED PURSUANT
TO SECTION 301 OF
THE CITY CHARTER.

Approved as to form:

ROBERT E. SHANNON, City Attorney

By: _____

[Signature]
Deputy

Exhibit A

P & R Paper Supply Company, Inc.

Wholesale Distributors of Paper and Janitorial Products

P.O. Box 590 ~ 1898 E. Colton Avenue, Redlands, CA 92374

Phone (909) 794-1108 ~ Fax (909) 794-1237

www.prpaper.com ~ Email: info@prpaper.com

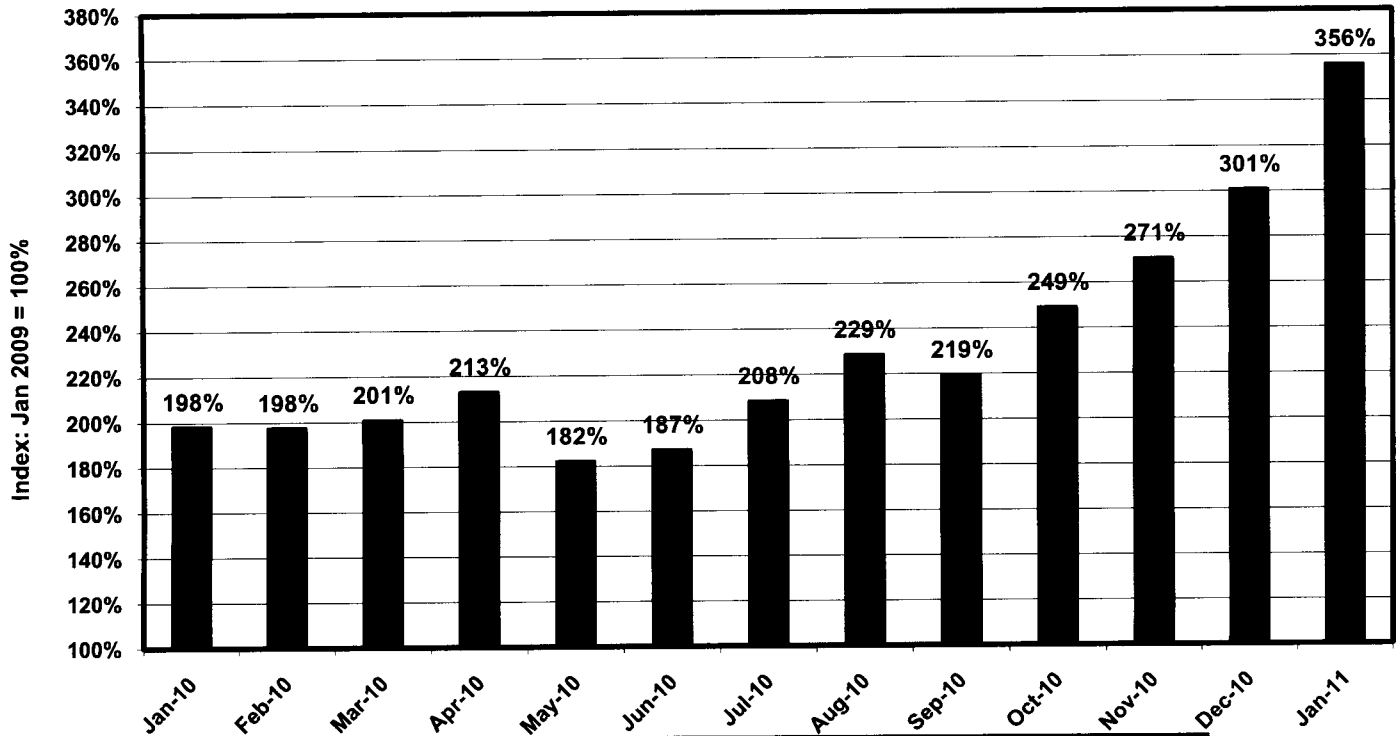
March 9, 2011

City of Long Beach

I am pleased to quote the following:

Category	P&R Item No.	Item Description	U/M	Current Price	New Price
Facial Tissue	PSC-FT301	2-PLY FACIAL TISSUE	30/100	\$ 12.15	✓
Seat Covers	GOL-HS20250	HARMONY SOFT SEAT COVER	20/250	\$ 22.15	✓
Wipers	KCC-41300	WYPALL x70 WIPERS 12x17	152	\$ 16.32	\$ 17.38
Toilet Tissue	AWP-80250	PACIFICA 2-PLY TISSUE(SS)	96/500	\$ 29.95	✓
Roll Towels	ANP-880BT206	WHITE 8"x800 ROLL TOWEL	6/800	\$ 19.55	✓
	JRV-89420	eNMOTION 8" WHITE TOWEL	6/700	\$ 49.92	✓
	JRV-89460	eNMOTION 10" WHITE TOWEL	6/800	\$ 51.48	✓
	JRV-89480	eNMOTION 10" BROWN TOWEL	6/800	\$ 48.96	✓
	KCC-1510	WHITE 1-PLY C-FOLD TWL	16/150	\$ 19.11	\$ 20.21
	SCA-S22223	CB530-WHITE C-FOLD TOWEL	16/150	\$ 16.70	✓
	JRV-20241	WHITE C-FOLD TOWEL	12/200	\$ 23.62	✓
Multi Fold Towels	ANP-888BM40	WHT MULTI-FOLD TOWEL	12/334	\$ 15.08	✓
	ANP-999KM40	BROWN MULTI-FOLD TOWEL	16/250	\$ 13.26	✓

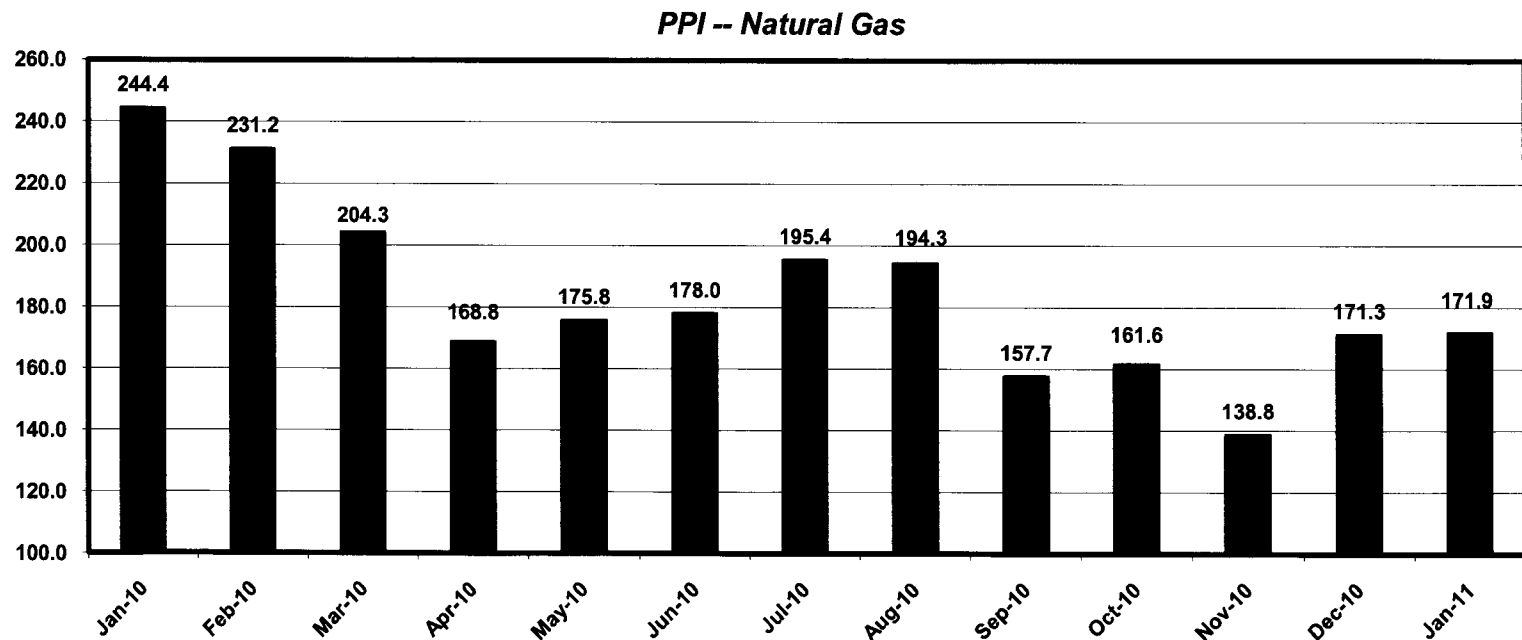
% of Base Month - January 2009



Source: CMAI Natural Rubber Latex NE Asia Spot Market Jan 2011

- **Natural Rubber is a primary material in manufacturing of many KCP Gloves.**

Natural Gas

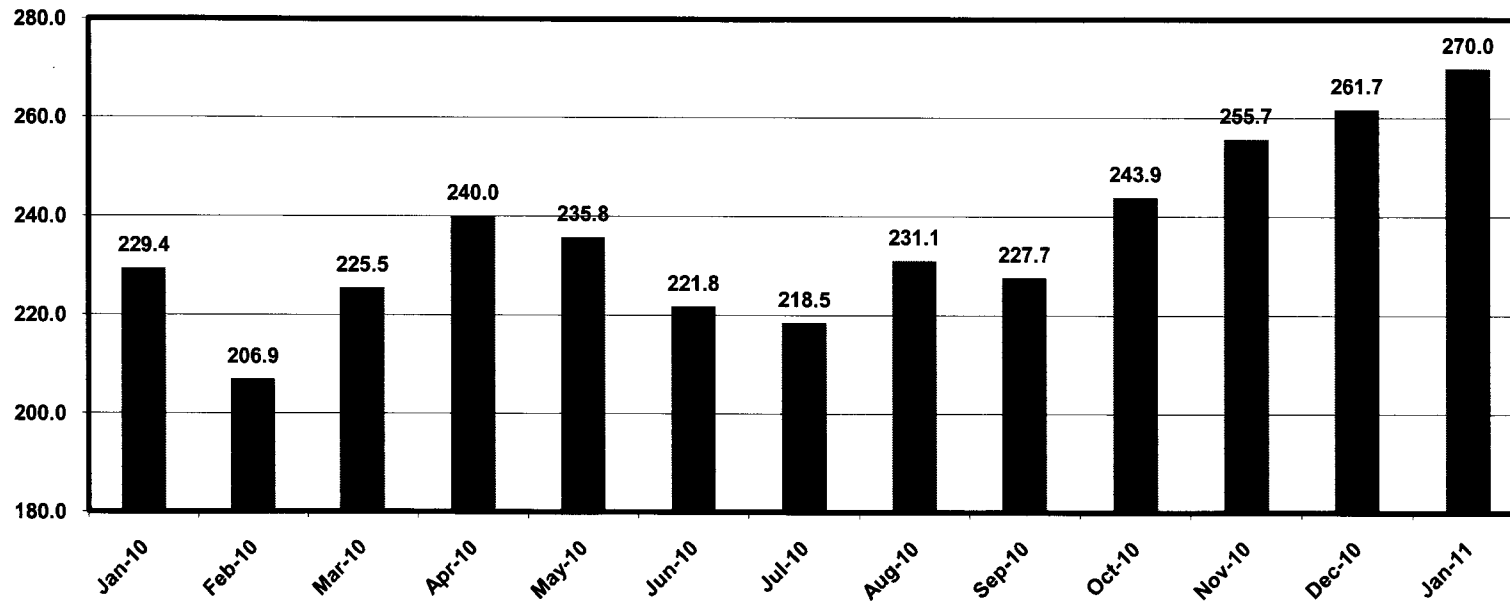


Source: Bureau of Labor Statistics, Producer Price Index for Natural Gas (WPU0531) - Jan 2011

- **Natural Gas is a major cost component which is utilized in the paper making drying process.**

Diesel Fuel

PPI -- Diesel Fuel

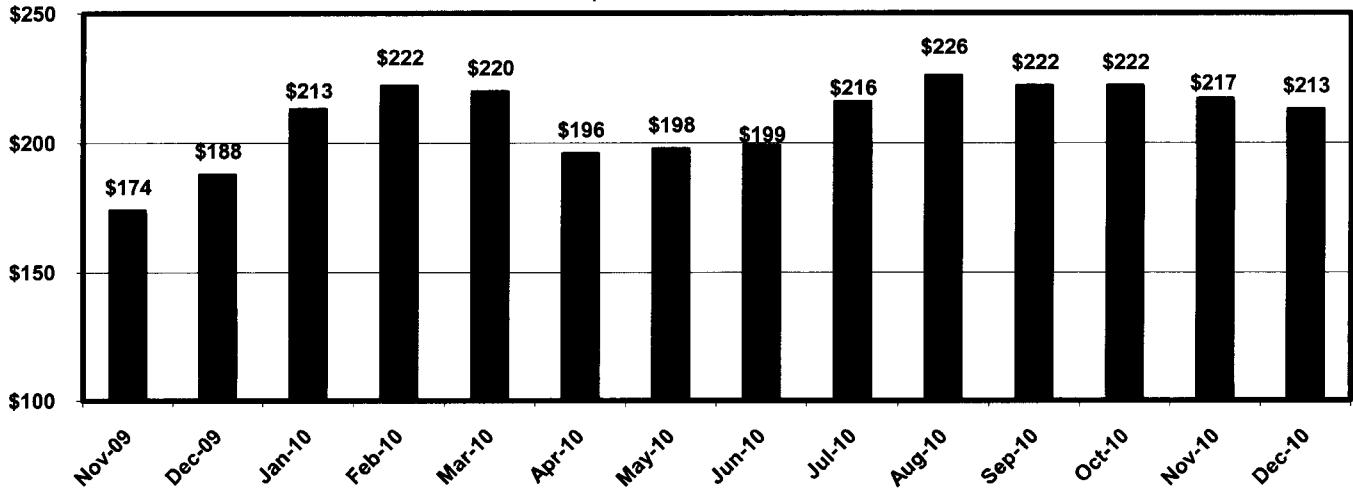


Source: Bureau of Labor Statistics, Producer Price Index for #2 Diesel Fuel (WPU057303) - Jan 2011

- ***Diesel Fuel is a major component of our cost to distribute products to our warehouse network, and to KCP Distributor customers.***

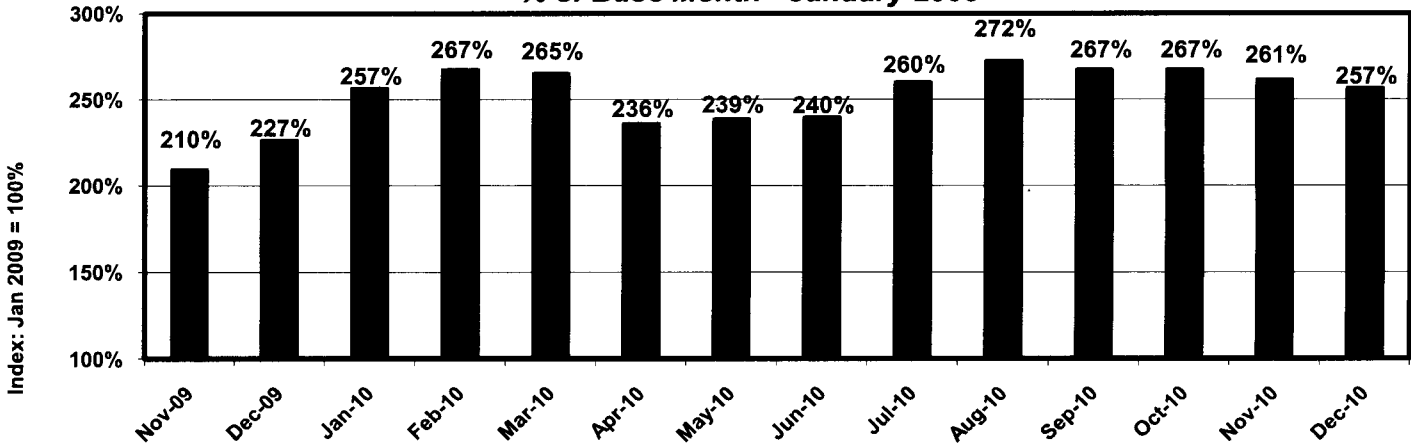
Wastepaper

\$'s/ Metric Ton



Source: RISI World Recovered Paper Monitor - Table 9 - Sort Office (37) - Dec 2010

% of Base Month - January 2009

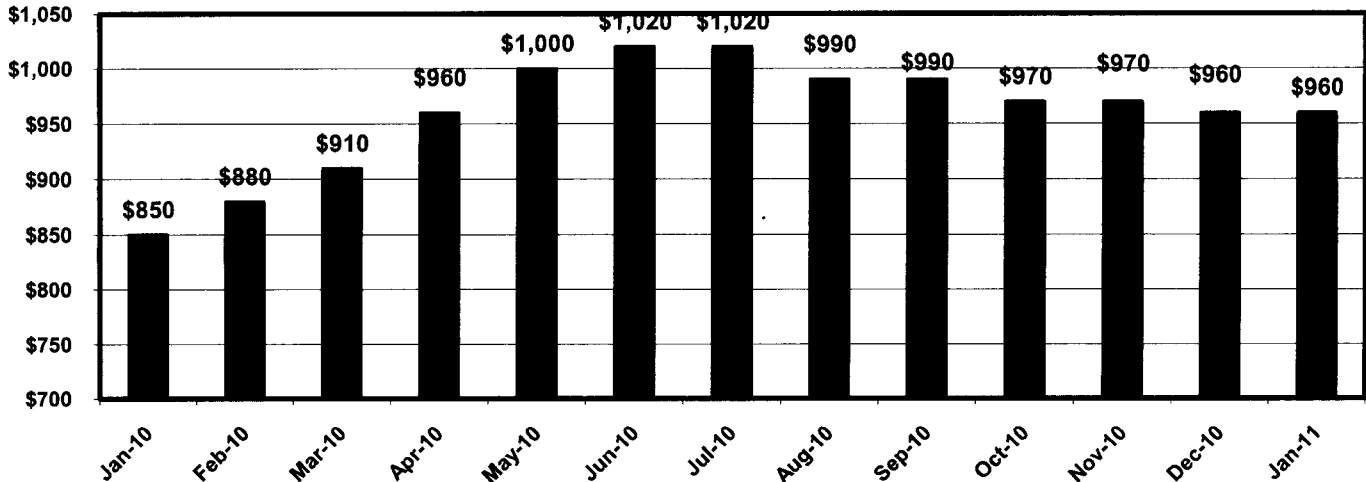


Source: RISI World Recovered Paper Monitor - Table 9 - Sort Office (37) - Dec 2010

- **Wastepaper is a primary material in Washroom tissue based products and Packaging Materials.**

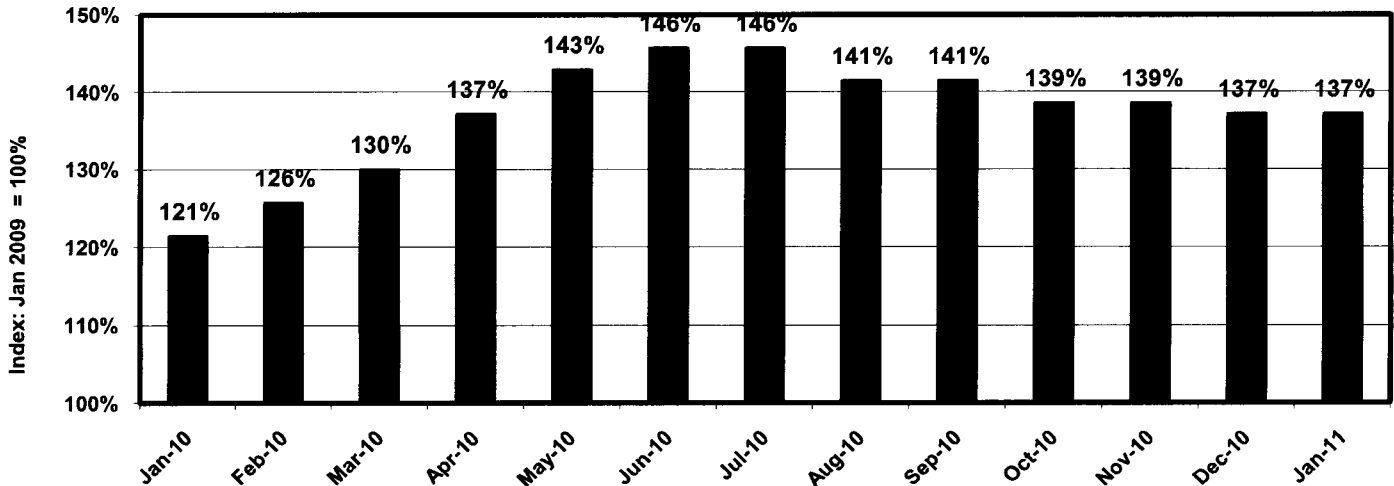
Pulp - Bleached Northern Softwood Kraft

\$'s/Metric Ton



Source: RISI World Pulp Monthly (Table 5) - Jan 2010

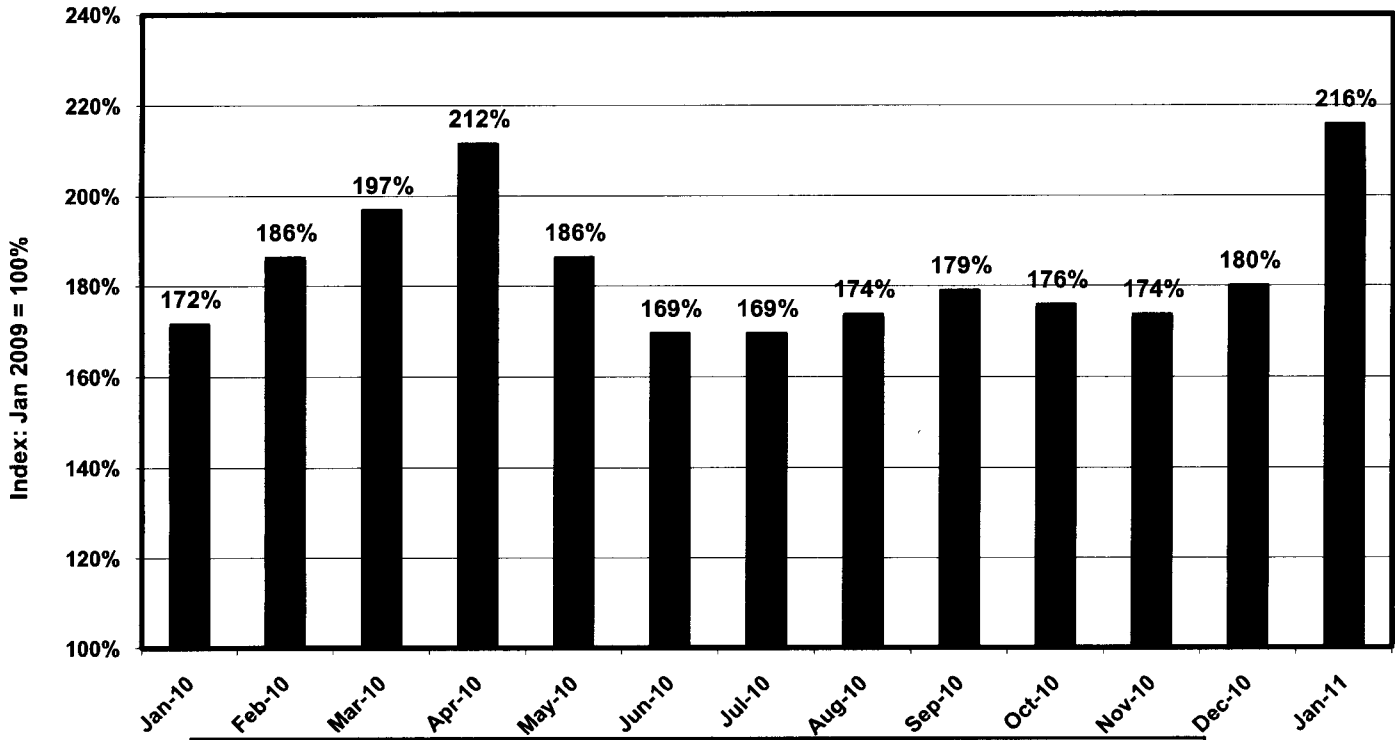
% of Base Month - January 2009



Source: RISI World Pulp Monthly (Table 5) - Jan 2010

- **Pulp is a primary material in Washroom and Wiper tissue based products.**

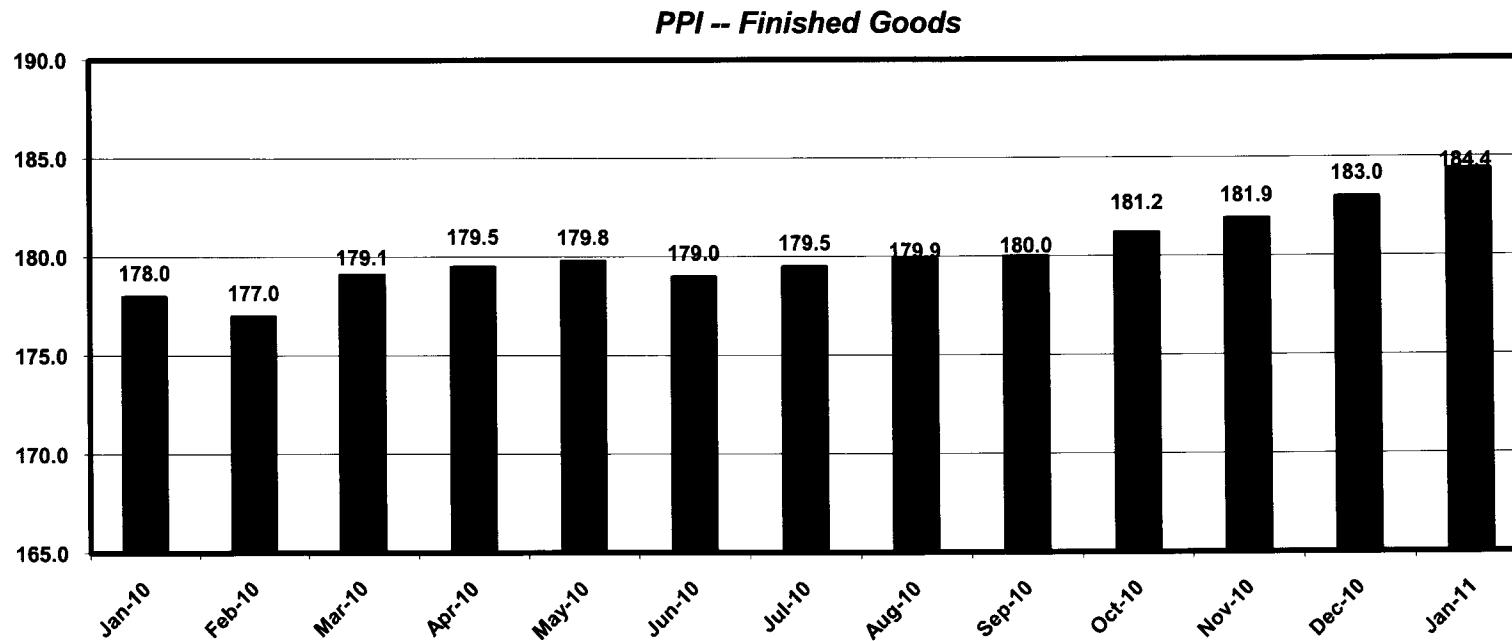
% of Base Month - January 2009



Source: CMAI Polypropylene NA Domestic Market Delivered - Jan 2011

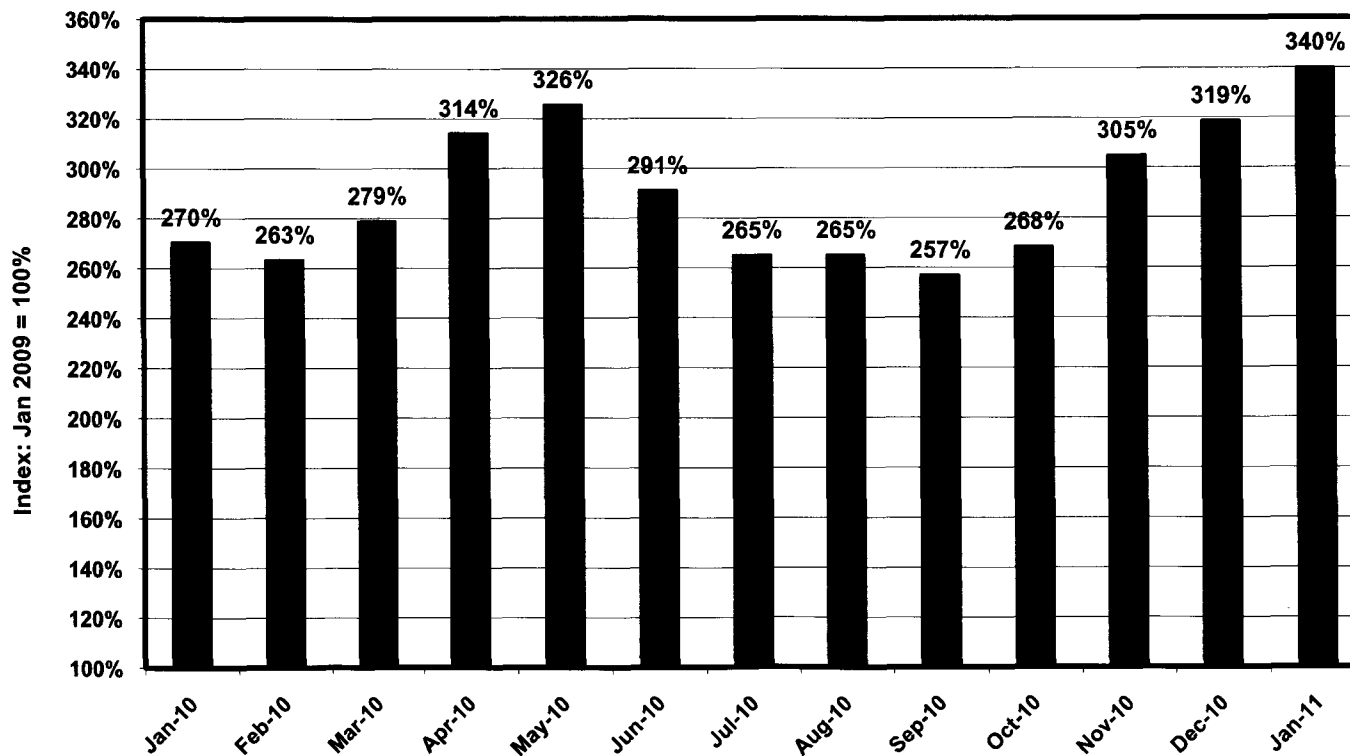
- ***Polypropylene is a primary material in the manufacturing of many KCP Apparel products, Dispensers, Skin Care pumps and various Wiping products.***

Finished Goods



Source: Bureau of Labor Statistics, Producer Price Index for Finished Goods (WPUSOP3000) - Jan 2011

% of Base Month - January 2009



Source: CMAI Butadiene NE Asia Contract Market CIF Taiwan Jan 2011

- **Butadiene is a primary material in manufacturing of many**

Absolute Index (Individual Months)

	1	2	3	4	5	6	7	8	9	10	11	12	13
		FG less Food											
	Finished Goods (WPU50P3000)	Natural Gas (WPU0531)	#2 Diesel Fuel (WPU05303)	Pulp, Paper, and Allied Product (WPU09)	Wastepaper (RISI Table 9)	Converted & Paperboard Products (WPU0915)	Deinked Pulp (Price per Ton)	Pulp (Price per Ton RISI S)	PPI - All Commodities (WPU00000000 *)	Natural Rubber #3 Smoked Sheet NE Asia Spot (US\$/Metric Ton) (CMAI)	Polypropylene NA Domestic Market (Contract) GP - Homopolymer (Cents/Lb) Delivered (CMAI)	Wastepaper (RISI Table 9)	Butadiene NE Asia Contract-Market (US\$/Metric Ton) (CMAI)
Jan-06	159.9	403.4	197.1	205.4	214.3	179.7	540.0	640.0	164.3	1,863.5	65.0	93.0	1,000.0
Feb-06	158.0	317.6	196.2	206.8	212.5	180.9	545.0	660.0	161.8	2,152.6	69.0	91.0	1,010.0
Mar-06	159.1	283.6	206.5	207.5	214.0	182.6	545.0	660.0	162.2	2,028.5	69.0	91.0	1,030.0
Apr-06	160.7	277.4	230.4	207.8	219.4	182.1	545.0	690.0	164.3	2,126.1	67.5	88.0	1,055.0
May-06	161.2	275.8	239.6	209.2	224.8	182.7	555.0	700.0	165.8	2,394.2	71.0	90.0	1,090.0
Jun-06	161.8	240.9	246.9	210.1	226.7	185.3	565.0	725.0	166.1	2,706.1	75.0	100.0	1,115.0
Jul-06	161.7	241.7	237.5	210.8	241.0	185.4	580.0	750.0	166.8	2,615.5	72.0	110.0	1,159.0
Aug-06	162.3	284.0	250.2	211.3	249.0	185.9	580.0	750.0	167.9	2,253.3	75.0	123.0	1,202.0
Sep-06	160.3	263.4	201.3	211.8	249.2	186.2	580.0	770.0	165.4	1,808.7	76.0	118.0	1,237.0
Oct-06	158.9	176.6	197.5	212.0	251.2	186.2	580.0	770.0	162.2	1,821.9	72.5	118.0	1,280.0
Nov-06	159.8	292.9	197.2	212.2	256.0	185.8	590.0	770.0	164.6	1,457.6	65.5	120.0	1,242.0
Dec-06	160.5	307.0	203.0	212.2	259.2	186.0	600.0	770.0	165.6	1,917.8	65.5	123.0	1,190.0
Jan-07	160.1	241.7	180.9	213.5	278.9	186.0	605.0	790.0	164.0	2,071.4	68.0	125.0	1,153.0
Feb-07	161.8	295.5	193.5	214.0	321.5	186.0	605.0	790.0	166.8	2,263.1	70.5	128.0	1,133.0
Mar-07	164.1	298.1	220.2	215.1	388.6	185.9	605.0	790.0	169.3	2,169.5	70.5	143.0	1,139.0
Apr-07	165.9	288.4	238.0	215.1	364.5	186.2	615.0	810.0	171.4	2,325.7	74.5	148.0	1,130.0
May-07	167.5	301.9	226.5	215.8	343.9	186.5	615.0	810.0	173.3	2,320.9	78.5	143.0	1,200.0
Jun-07	167.2	304.7	227.6	216.1	346.4	187.2	620.0	810.0	173.8	2,232.5	76.0	148.0	1,129.0
Jul-07	168.5	274.0	243.5	217.2	381.0	187.6	625.0	830.0	175.1	2,082.2	77.0	155.0	1,095.0
Aug-07	166.1	241.3	231.2	217.6	388.7	188.0	640.0	830.0	172.4	2,105.7	79.0	165.0	1,095.0
Sep-07	167.4	216.8	246.2	218.2	397.8	188.4	655.0	850.0	173.5	2,165.3	77.0	165.0	1,114.0
Oct-07	168.6	248.6	249.6	219.5	409.5	189.9	660.0	850.0	174.7	2,258.6	80.0	168.0	1,178.0
Nov-07	171.4	282.3	296.7	220.1	406.4	190.9	660.0	850.0	179.0	2,454.3	87.0	170.0	1,238.0
Dec-07	170.4	292.1	271.9	220.2	397.5	191.4	680.0	875.0	178.6	2,329.9	87.0	183.0	1,300.0
Jan-08	172.0	293.4	278.2	222.3	409.7	191.7	705.0	880.0	181.0	2,583.9	88.0	200.0	1,386.0
Feb-08	172.3	332.4	287.5	223.4	431.1	193.1	730.0	880.0	182.7	2,729.1	85.5	205.0	1,424.0
Mar-08	175.1	362.7	353.7	224.8	444.6	193.8	730.0	880.0	187.9	2,771.0	87.0	210.0	1,453.0
Apr-08	176.5	384.0	365.1	224.9	437.9	194.7	750.0	880.0	190.9	2,714.3	90.5	210.0	1,588.0
May-08	179.8	437.0	398.2	225.2	414.3	194.8	750.0	880.0	196.6	2,993.5	95.0	205.0	1,686.0
Jun-08	182.4	449.5	421.0	225.7	200.0	195.6	765.0	880.0	200.5	3,148.3	101.5	200.0	1,860.0
Jul-08	185.1	489.9	431.9	227.0	200.0	197.9	765.0	885.0	205.5	3,161.4	112.0	200.0	2,277.0
Aug-08	182.2	355.7	346.7	229.6	205.0	201.7	765.0	885.0	199.0	2,188.1	111.0	205.0	2,407.0
Sep-08	182.2	306.9	342.3	231.1	205.0	205.7	765.0	870.0	196.9	3,159.3	95.0	205.0	2,385.0
Oct-08	177.4	257.0	281.8	230.9	185.0	207.3	765.0	840.0	186.4	2,039.7	86.0	185.0	2,321.0
Nov-08	172.0	217.2	224.1	228.8	110.0	207.5	725.0	785.0	176.8	1,655.2	55.0	110.0	1,738.0
Dec-08	168.8	242.0	168.0	228.0	83.0	206.8	640.0	730.0	170.9	1,137.2	45.0	83.0	1,260.0
Jan-09	170.4	229.4	161.6	228.0	83.0	205.9	600.0	700.0	171.2	1,610.1	47.5	83.0	615.0
Feb-09	169.9	175.9	147.2	227.0	90.0	204.9	570.0	670.0	169.3	1,498.1	53.0	90.0	572.0
Mar-09	169.9	146.8	139.2	226.7	91.0	204.6	570.0	650.0	168.1	1,448.1	54.0	91.0	555.0
Apr-09	170.3	138.7	167.4	225.8	87.0	203.9	565.0	635.0	169.1	1,676.1	54.0	87.0	544.0
May-09	171.1	135.6	166.4	224.8	86.0	203.0	565.0	640.0	170.8	1,726.9	56.5	86.0	597.0
Jun-09	174.3	140.2	191.1	224.5	98.0	202.1	565.0	660.0	174.1	1,695.4	65.0	98.0	659.0
Jul-09	172.4	151.5	172.8	224.0	118.0	201.3	565.0	700.0	172.5	1,789.8	66.0	118.0	951.0
Aug-09	174.2	147.8	204.1	224.4	128.0	201.5	580.0	730.0	175.0	2,108.6	70.0	128.0	1,205.0
Sep-09	173.2	123.3	193.2	224.9	141.0	201.5	610.0	770.0	174.1	2,233.9	82.0	141.0	1,375.0
Oct-09	173.8	154.0	202.8	224.9	157.0	201.5	640.0	800.0	175.2	2,414.6	72.0	157.0	1,490.0
Nov-09	175.7	181.5	215.7	225.7	174.0	202.3	665.0	830.0	177.4	2,663.9	74.5	174.0	1,449.0
Dec-09	176.0	195.1	205.1	226.2	188.0	202.1	665.0	830.0	178.1	2,921.6	78.5	188.0	1,414.0
Jan-10	178.0	244.4	229.4	227.2	213.0	201.9	690.0	850.0	181.9	3,192.1	81.5	213.0	1,663.0
Feb-10	177.0	231.2	206.9	229.7	222.0	202.3	880.0	181.0	181.0	3,180.6	88.5	222.0	1,619.0
Mar-10	179.1	204.3	225.5	233.1	220.0	205.3	910.0	183.3	183.3	3,233.2	93.5	220.0	1,715.0
Apr-10	179.5	168.8	240.0	234.6	196.0	206.8	960.0	184.4	184.4	3,430.6	100.5	196.0	1,932.0
May-10	179.8	175.8	235.8	236.9	198.0	208.2	1,000.0	184.8	184.8	2,933.5	88.5	198.0	2,002.0
Jun-10	179.0	178.0	221.8	237.5	199.0	210.6	1,020.0	183.5	183.5	3,013.0	80.5	199.0	1,790.0
Jul-10	179.5	195.4	218.5	238.7	216.0	210.9	1,020.0	184.1	184.1	3,354.3	80.5	216.0	1,630.0
Aug-10	179.9	194.3	231.1	239.0	226.0	210.8	990.0	184.9	184.9	3,681.5	82.5	226.0	1,630.0
Sep-10	180.0	157.7	227.7	240.3	222.0	212.4	990.0	184.9	184.9	3,532.6	85.0	222.0	1,580.0
Oct-10	181.2	161.6	243.9	240.6	222.0	211.6	970.0	186.8	186.8	4,010.3	83.5	222.0	1,650.0
Nov-10	181.9	138.8	255.7	241.6	217.0	211.6	970.0	188.0	188.0	4,356.3	82.5	217.0	1,875.0
Dec-10	183.0	171.3	261.7	242.7	213.0	212.3	960.0	189.9	189.9	4,843.8	85.5	213.0	1,960.0
Jan-11	184.4	171.9	270.0	243.3		213.9		960.0	192.2	5,728.8	102.5		2,090.0
Summary Tab Numbers													
	172.6	160.0	180.6	225.6	120.1	202.9		717.9	172.9	1,982.3	64.4	120.1	952.2
	179.8	185.1	233.2	236.8	213.7	208.7		960.0	184.8	3,563.5	86.0	213.7	1,753.8
	4.2%	15.7%	29.1%	5.0%	77.9%	2.9%		33.7%	6.9%	79.8%	33.6%	77.9%	84.2%

BLS Series Report

**<--- Click on this Hyperlink to bring you to the U.S. Department of Labor
Bureau of Labor Statistics web site**

**WPUSOP3000
WPU0531
WPU09
WPU0912
WPU0915
WPU00000000
WPU057303**

**<--- Copy these numbers into the Seriesselection box and then retrieve
the data for input into the tables on the "Data" worksheet**

CMAI : Chemical Market Associates, Inc.

**<--- Click on this Hyperlink to bring you to the CMAI database
to find data for polypropylene & natural rubber**

Press Client Login then

- Username:

- Password:

Go to Database Services, then Prices & Economics