

# EXHIBIT C

T-Mobile - So. CA

Search Ring

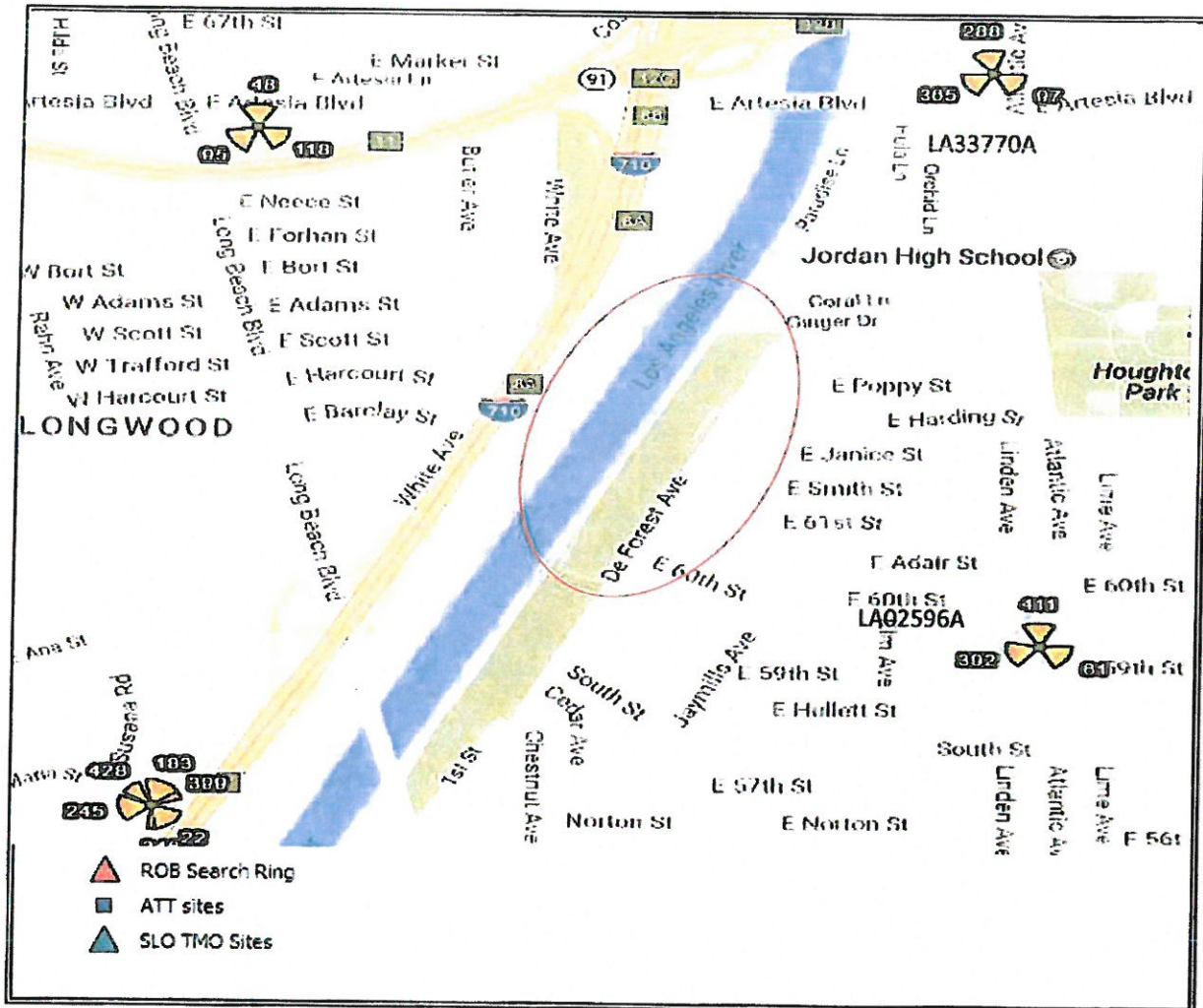
Market : Los Angeles

Search Ring ID #: LA74664

Ring Name : LA74664

Cross Streets / Reference point :

De Forest Ave and E Harding St



Latitude : 33.867507 N  
Longitude : -118.192138 W  
Ring Type : Macro

Rad. Center ( ft): 60  
Ground Elevation (m): 13  
Ring Diameter (miles): 0.5

Coverage Objective : Provide coverage at residential around DeForest park. Off load Traffic (LA33770A3,LA02596A3,LA02596A1)

Potential Candidates:

Comments: Approved Cell Split-CMP3 Site List

RF Design Engineer:

Peter Spaczai

Release Date: 12/14/2016

RF Manager:

Tim Omalley

Date: 12/19

Market Manager:

Date:



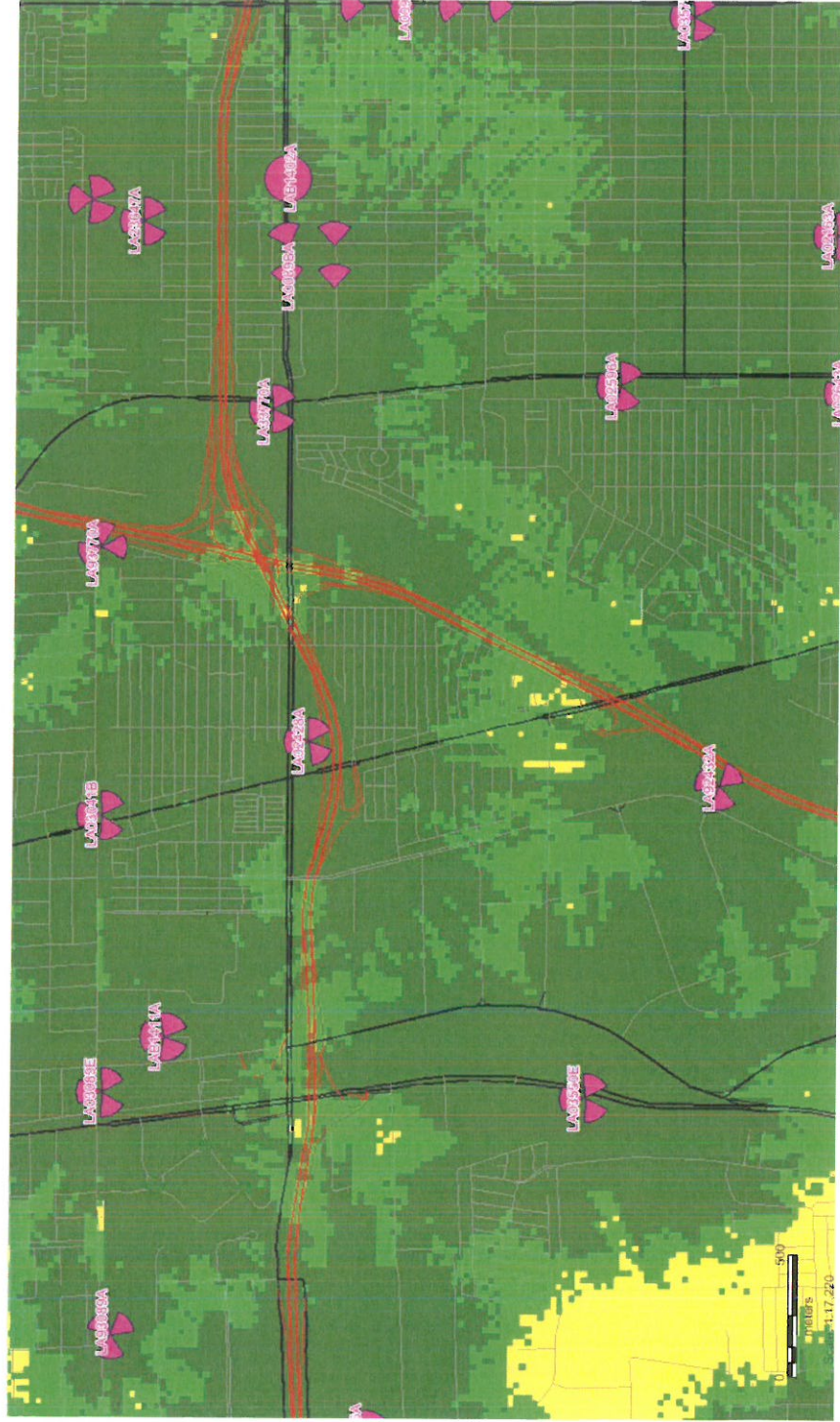
**LA74664B  
COVERAGE PLOT**

The Right Results  
The Right Way™





# Existing LTE 2100 Coverage



Existing Site

Legend	
	In-building Commercial
	In-building
	In-Vehicle
	Outdoor

# Prediction of LTE 2100 Coverage with LA74664B



LA74664B

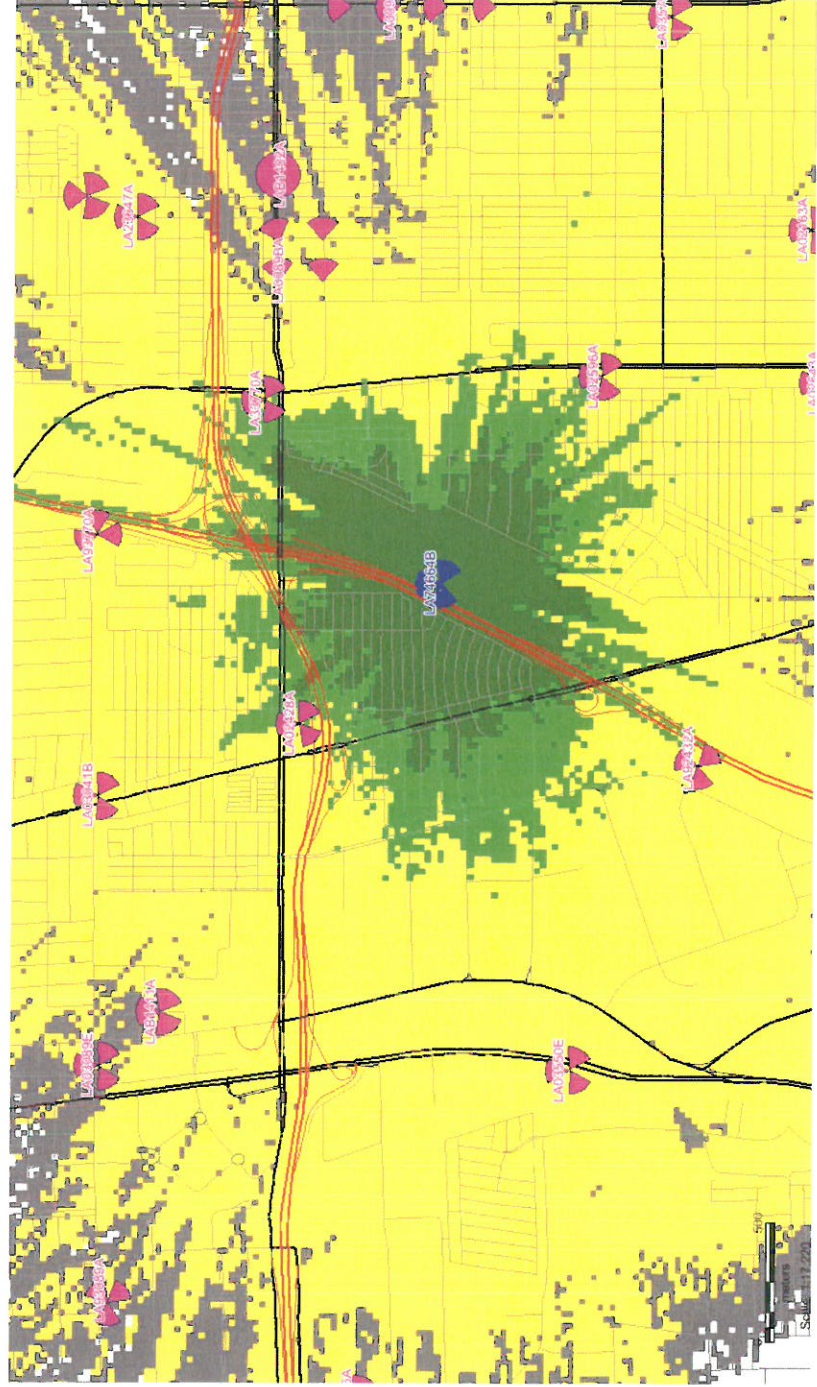


Existing Site

Legend	
	In-building Commercial
	In-building
	In-Vehicle
	Outdoor

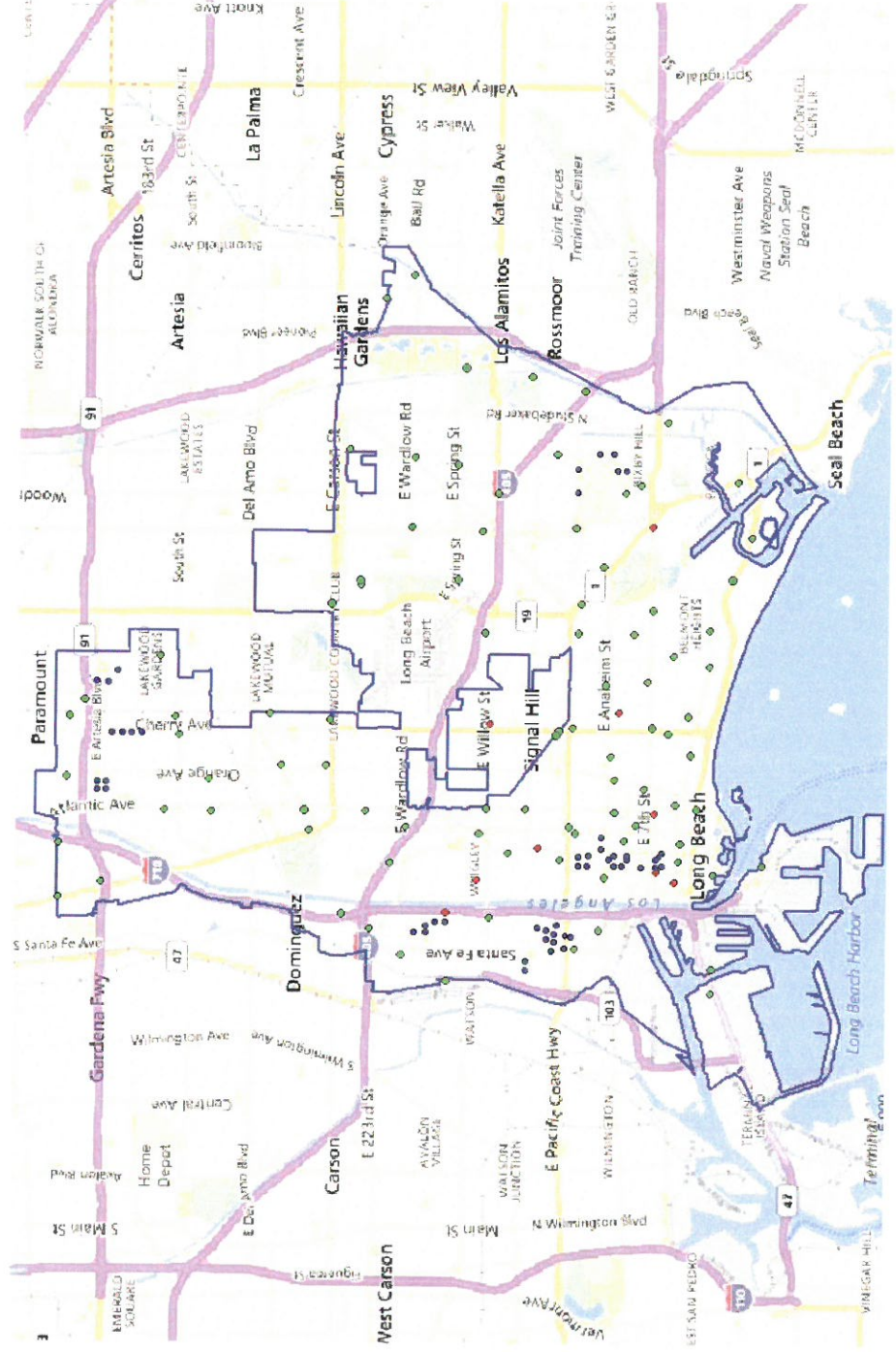


# Prediction of LTE 2100 Coverage of LA74664B only



Legend	
	In-building Commercial
	In-building
	In-Vehicle
	Outdoor

# Long Beach ON AIR Site



Macro

DAS

Small Cell





Site Code	Site Name	Site Status	Site Type	Latitude	Longitude
LA33383A	LA3383 Seabreeze Senior Apts.	ON-AIR	Macro	33.77618888	-118.180497
LA02117A	SM117 Victoria Plaza	ON-AIR	Macro	33.76055253	-118.134997
LA03621D	LA3621 Store N Save	ON-AIR	Macro	33.77054	-118.183822
LA03572A	ATC SC572 Atherton Plaza	ON-AIR	Macro	33.78889781	-118.123997
LA02621A	LA621 Extra Space Storage	ON-AIR	Macro	33.83272182	-118.16578
LA02116A	SM116 ThaiSilk Restaurant	ON-AIR	Macro	33.7678621	-118.173
LA02676X	LA250 CSULB Library	ON-AIR	Macro	33.777141	-118.1147
LA03568B	LA3568 LORBEER (NAPLES) BLDG RT	ON-AIR	Macro	33.757166	-118.125871
LA33380E	LA3380 Wineke Building	ON-AIR	Macro	33.764664	-118.153853
LA02446A	LA446 Reef Restaurant	ON-AIR	Macro	33.754806	-118.196935
LA02671A	LA243 Anaheim & Daisy (Fish Market)	ON-AIR	Macro	33.78323927	-118.199586
LA33751A	Bixby Knolls Apartments	ON-AIR	Macro	33.841483	-118.175644
LA03569D	LA3569 Manorhouse (cohab)	ON-AIR	Macro	33.80568333	-118.124725
LA02643A	LA643 Athanasius Church	ON-AIR	Macro	33.85408408	-118.185726
LA13128C	LA3128 Fisher Apts.	ON-AIR	Macro	33.80061111	-118.194472
LA03586A	LA3586 Douglas Center	ON-AIR	Macro	33.83257222	-118.140583
LA02674A	LA247 Atlantic & Ocean Apt	ON-AIR	Macro	33.76668725	-118.184787
LA02675A	LA248 Termino Apartments	ON-AIR	Macro	33.764606	-118.146105
LA02677A	LA251 Sports Authority	ON-AIR	Macro	33.759685	-118.113853
LA33749A	LA3749 Holiday Inn	ON-AIR	Macro	33.781494	-118.185442
LA33759A	LA3759 Camaj Palace Apts	ON-AIR	Macro	33.791392	-118.195799
LA33375B	33375 Trinh Apartments	ON-AIR	Macro	33.78929444	-118.167361
LA03571B	LA3571 Capri Realty	ON-AIR	Macro	33.79239377	-118.107945
LA02593A	SM158 BMI Insurance Bldg	ON-AIR	Macro	33.78380037	-118.132253
LA02222A	SM222 Corporate Square	ON-AIR	Macro	33.83643976	-118.189584
LA33748C	33748 The Gallery	ON-AIR	Macro	33.79765833	-118.184861
LA03263G	LA3263 Moore Property RT	ON-AIR	Macro	33.77488	-118.167155
LA03061D	MM LA3061 Scottish Rite RT	ON-AIR	Macro	33.77761666	-118.188331
LA02462A	LA077 GTP Grand I405/Lakewood	ON-AIR	Macro	33.80501877	-118.146734
LA02249A	LA249 Jamison Building	ON-AIR	Macro	33.78779481	-118.140346
LA33385B	LA3385 Yeas Pharmacy	ON-AIR	Macro	33.788398	-118.146751
LA03079G	LA3079 Catalina Landing	ON-AIR	Macro	33.763611	-118.198889
LA02673A	LA246 Plymouth Bldg	ON-AIR	Macro	33.76999	-118.1961
LA02244A	LA244 Medical Clinic	ON-AIR	Macro	33.78973617	-118.188675
LA03062D	LA3062 NRG Power RT	ON-AIR	Macro	33.763978	-118.224571
LA33420A	33420 Athena Apts	ON-AIR	Macro	33.775706	-118.157256
LA03561C	LA3561 Bixby Knolls Towers	ON-AIR	Macro	33.82610833	-118.185547
LA02591A	SM156 Security Storage	ON-AIR	Macro	33.782216	-118.173461
LA03565B	LA3565 Newport plaza	ON-AIR	Macro	33.771142	-118.15172
LA02630A	LA630 Grace United Church	ON-AIR	Macro	33.768286	-118.164615
LA02646A	LA646 Archdiocese St Cornelius	ON-AIR	Macro	33.81827	-118.124018
LA33766A	SBA LA3766 GELB Clock	ON-AIR	Macro	33.833442	-118.175667
LA02590A	SM155 Metro Trans Authori	ON-AIR	Macro	33.80585909	-118.190249
LA02431A	SM069 LBCC Veteran Stadium	ON-AIR	Macro	33.82742006	-118.136635
LA13153B	LA3153 Spring Medical	ON-AIR	Macro	33.81009	-118.1104
LA33957A	SBA El Dorado Community Church	ON-AIR	Macro	33.823372	-118.074497

LA33357A	SBA LA3357 Light & Life	ON-AIR	Macro	33.86337222	-118.152222
LA44041A	VZW Los Coyotes Diagonal	ON-AIR	Macro	33.81778888	-118.108803
LA03583A	la3583 All Souls Cemetery	ON-AIR	Macro	33.84353055	-118.164397
LA02588A	SM154 SCI Colo LB Harbor	ON-AIR	Macro	33.78416426	-118.211022
LA02596A	VZW SM164 Video Verizon	ON-AIR	Macro	33.8623337	-118.185359
LA03587C	SBA LA3587 St Maria RL	ON-AIR	Macro	33.829731	-118.107242
LA03041B	LA3041 SCE Greenleaf&LngBch M1T6	ON-AIR	Macro	33.88128549	-118.20445
LA02220A	SM220 Santa Fe SCE Tower	ON-AIR	Macro	33.81958141	-118.216586
LA23228B	SCE StudebakerSelfStorage	ON-AIR	Macro	33.7725	-118.1011
LA23647A	LA3647 Orange SCE CS	ON-AIR	Macro	33.87974444	-118.178303
LA13115C	LA3115 SCE El Dorado Park	ON-AIR	Macro	33.80889118	-118.089445
LA03579E	SC579 Glad Tidings Church	ON-AIR	Macro	33.859805	-118.169208
LA02163A	SM163 NLB ChristianChurch	ON-AIR	Macro	33.85450261	-118.178832
LA44042A	LA4042 Gladys Plumbing	ON-AIR	Macro	33.78324	-118.1579
LA02259A	LA259 Los Altos Methodist	ON-AIR	Macro	33.80296004	-118.116557
LA02678A	LA252 LA-252-10	ON-AIR	Macro	33.87668138	-118.161732
LA02262A	TMT LA-DWP Long Beach LA262	ON-AIR	Macro	33.78751886	-118.094226
LA02428A	LA069 FWY710/Artesia Fwy	ON-AIR	Macro	33.87364849	-118.201168
LA54034A	LA4034 Veterans Hospital	ON-AIR	Macro	33.78003333	-118.116436
LA02454A	LA074 FWY405/FWY110	ON-AIR	Macro	33.83037949	-118.207721
LA02670A	LA242 LA-242-00	ON-AIR	Macro	33.80389232	-118.208332
LA03557B	TMT LA3557 Palmcrest Grand	ON-AIR	Macro	33.821733	-118.196738
LA02592A	SM157 ArmstrongGarden Ctr	ON-AIR	Macro	33.77822435	-118.146864
LA92588A	LA0536 - W. PCH & Santa /LAXe0800536/L	ON-AIR	Macro	33.78850834	-118.215147
LA93770A	LA0553 - SCE Mesa Redond/LAXe0800553/	ON-AIR	Macro	33.88116389	-118.192664
LAB3901A	MPCS BTS LAD039-1	ON-AIR	Engineering	33.78087	-118.16385
LAB3902A	MPCS BTS LAD039-2	ON-AIR	Engineering	33.77392	-118.19832
LAB3903A	MPCS BTS LAD039-4	ON-AIR	Engineering	33.77438	-118.18578
LAB3904A	MPCS BTS LAD039-5	ON-AIR	Engineering	33.79529	-118.1932
LAB3905A	MPCS BTS LAD039-6	ON-AIR	Engineering	33.80614	-118.20027
LAB3906A	MPCS BTS LAD039-10	ON-AIR	Engineering	33.8117	-118.20733
LA92220A	LA2892C-LA92220A	ON-AIR	Macro	33.811417	-118.222139
LA92262A	LA0597A-LA92262A	ON-AIR	Macro	33.7970611	-118.091292
LA92592A	LA0667B-LA92592A	ON-AIR	Macro	33.77489	-118.14169
LA93061A	LA0668C-LA93061A	ON-AIR	Macro	33.7798	-118.19153
LA93569A	LA0590A-LA93569A	ON-AIR	Macro	33.809953	-118.135307
LAB3907A	MPCS BTS LAD039-7	ON-AIR	Engineering	33.7706	-118.20058
LAB3908A	MPCS BTS LAD039-8	ON-AIR	Engineering	33.77511	-118.1236
LAB3909A	MPCS BTS LAD039-9	ON-AIR	Engineering	33.80417	-118.16651
LA92222A	LA92222A	ON-AIR	Macro	33.8372	-118.18534
LA92244A	LA92244A	ON-AIR	Macro	33.78854	-118.1901
LA92431A	LA92431A	ON-AIR	Macro	33.82746	-118.13555
LA92454A	LA92454A	ON-AIR	Macro	33.82531	-118.21083
LA92457A	LA92457A	ON-AIR	Macro	33.81892	-118.18874
LA92590A	LA92590A	ON-AIR	Macro	33.8046	-118.18474
LA92591A	LA92591A	ON-AIR	Macro	33.78159	-118.17845
LA92673A	LA92673A	ON-AIR	Macro	33.76961	-118.19214



LA92678A	LA92678A	ON-AIR	Macro	33.87942	-118.16518
LA93062A	LA93062A	ON-AIR	Macro	33.76383	-118.21921
LA93263A	LA93263A	ON-AIR	Macro	33.77192	-118.16847
LA93579A	LA93579A	ON-AIR	Macro	33.86053	-118.16533
LA93957A	LA93957A	ON-AIR	Macro	33.81836	-118.06933
LA0001BA	LA0001BA	ON-AIR	Macro	33.7917	-118.168
LA90594A	LA90594A	ON-AIR	Macro	33.79214	-118.16886
LA0037BA	LA0037BA	ON-AIR	Macro	33.78416426	-118.211022
LA0038BA	LA0038BA	ON-AIR	Macro	33.78416426	-118.211022
LA0039BA	LA0039BA	ON-AIR	Macro	33.78416426	-118.211022
LA0074BA	LA0074BA	ON-AIR	Macro	33.79239377	-118.107945
LA0088BA	LA0088BA	ON-AIR	Macro	33.87974444	-118.178303
LA0089BA	LA0089BA	ON-AIR	Macro	33.87974444	-118.178303
LA0090BA	LA0090BA	ON-AIR	Macro	33.87974444	-118.178303
LA0112BA	LA0112BA	ON-AIR	Macro	33.791392	-118.195799
LA0113BA	LA0113BA	ON-AIR	Macro	33.791392	-118.195799
LA0114BA	LA0114BA	ON-AIR	Macro	33.791392	-118.195799
LA0037BA_	LA0037BA_11LAB	ON-AIR	Small Cell	33.81716	-118.21164
LA0037BA_	LA0037BA_21LAB	ON-AIR	Small Cell	33.81524	-118.21013
LA0037BA_	LA0037BA_31LAB	ON-AIR	Small Cell	33.81354	-118.20948
LA0037BA_	LA0037BA_41LAB	ON-AIR	Small Cell	33.81173	-118.20949
LA0037BA_	LA0037BA_51LAB	ON-AIR	Small Cell	33.81522	-118.21162
LA0038BA_	LA0038BA_11LAB	ON-AIR	Small Cell	33.7972	-118.21777
LA0038BA_	LA0038BA_21LAB	ON-AIR	Small Cell	33.79254	-118.21561
LA0038BA_	LA0038BA_31LAB	ON-AIR	Small Cell	33.79718	-118.21971
LA0039BA_	LA0039BA_11LAB	ON-AIR	Small Cell	33.79018	-118.21211
LA0039BA_	LA0039BA_21LAB	ON-AIR	Small Cell	33.78908	-118.21236
LA0039BA_	LA0039BA_31LAB	ON-AIR	Small Cell	33.7916	-118.20996
LA0039BA_	LA0039BA_41LAB	ON-AIR	Small Cell	33.79356	-118.21099
LA0039BA_	LA0039BA_51LAB	ON-AIR	Small Cell	33.79523	-118.21056
LA0074BA_	LA0074BA_11LAB	ON-AIR	Small Cell	33.78859	-118.11113
LA0074BA_	LA0074BA_21LAB	ON-AIR	Small Cell	33.78226	-118.10789
LA0074BA_	LA0074BA_31LAB	ON-AIR	Small Cell	33.788609	-118.116402
LA0074BA_	LA0074BA_41LAB	ON-AIR	Small Cell	33.77992	-118.11143
LA0074BA_	LA0074BA_51LAB	ON-AIR	Small Cell	33.78149	-118.11138
LA0074BA_	LA0074BA_61LAB	ON-AIR	Small Cell	33.784673	-118.107882
LA0088BA_	LA0088BA_11LAB	ON-AIR	Small Cell	33.901184	-118.177502
LA0088BA_	LA0088BA_21LAB	ON-AIR	Small Cell	33.896464	-118.170987
LA0088BA_	LA0088BA_31LAB	ON-AIR	Small Cell	33.89756	-118.18179
LA0088BA_	LA0088BA_41LAB	ON-AIR	Small Cell	33.9	-118.18179
LA0088BA_	LA0088BA_51LAB	ON-AIR	Small Cell	33.898083	-118.177455
LA0088BA_	LA0088BA_61LAB	ON-AIR	Small Cell	33.899522	-118.177486
LA0089BA_	LA0089BA_21LAB	ON-AIR	Small Cell	33.871828	-118.168794
LA0089BA_	LA0089BA_31LAB	ON-AIR	Small Cell	33.874479	-118.17939
LA0089BA_	LA0089BA_41LAB	ON-AIR	Small Cell	33.872855	-118.179334
LA0089BA_	LA0089BA_51LAB	ON-AIR	Small Cell	33.872833	-118.181205
LA0089BA_	LA0089BA_61LAB	ON-AIR	Small Cell	33.89628	-118.16842

LA0089BA_LA0089BA_11LAB	ON-AIR	Small Cell	33.874459	-118.181226
LA0090BA_LA0090BA_11LAB	ON-AIR	Small Cell	33.870033	-118.168783
LA0090BA_LA0090BA_21LAB	ON-AIR	Small Cell	33.874567	-118.157606
LA0090BA_LA0090BA_31LAB	ON-AIR	Small Cell	33.87244	-118.15782
LA0090BA_LA0090BA_41LAB	ON-AIR	Small Cell	33.868243	-118.168769
LA0090BA_LA0090BA_51LAB	ON-AIR	Small Cell	33.866406	-118.168757
LA0090BA_LA0090BA_61LAB	ON-AIR	Small Cell	33.870887	-118.155478
LA0112BA_LA0112BA_11LAB	ON-AIR	Small Cell	33.78368	-118.19356
LA0112BA_LA0112BA_21LAB	ON-AIR	Small Cell	33.78619	-118.19495
LA0112BA_LA0112BA_31LAB	ON-AIR	Small Cell	33.788	-118.19521
LA0112BA_LA0112BA_41LAB	ON-AIR	Small Cell	33.78368	-118.19085
LA0112BA_LA0112BA_51LAB	ON-AIR	Small Cell	33.7863	-118.19706
LA0112BA_LA0112BA_61LAB	ON-AIR	Small Cell	33.788	-118.19706
LA0113BA_LA0113BA_11LAB	ON-AIR	Small Cell	33.78147	-118.19495
LA0113BA_LA0113BA_21LAB	ON-AIR	Small Cell	33.77907	-118.19569
LA0113BA_LA0113BA_31LAB	ON-AIR	Small Cell	33.78236	-118.19572
LA0113BA_LA0113BA_41LAB	ON-AIR	Small Cell	33.78144	-118.19716
LA0113BA_LA0113BA_51LAB	ON-AIR	Small Cell	33.78006	-118.19717
LA0113BA_LA0113BA_61LAB	ON-AIR	Small Cell	33.77905	-118.19493
LA0114BA_LA0114BA_11LAB	ON-AIR	Small Cell	33.77668	-118.19724
LA0114BA_LA0114BA_21LAB	ON-AIR	Small Cell	33.77403	-118.19724
LA0114BA_LA0114BA_31LAB	ON-AIR	Small Cell	33.77282	-118.1944
LA0114BA_LA0114BA_41LAB	ON-AIR	Small Cell	33.77345	-118.19498
LA0114BA_LA0114BA_51LAB	ON-AIR	Small Cell	33.77403	-118.19571
LA0114BA_LA0114BA_61LAB	ON-AIR	Small Cell	33.7728589	-118.196993
LA0039BA_LA0039BA_61LAB	ON-AIR	Small Cell	33.79212	-118.211976
LA0038BA_LA0038BA_61LAB	ON-AIR	Small Cell	33.790341	-118.214933
LA0038BA_LA0038BA_41LAB	ON-AIR	Small Cell	33.792137	-118.213629
LA0038BA_LA0038BA_51LAB	ON-AIR	Small Cell	33.793559	-118.213104