

Tidelands and Harbor Committee  
June 2, 2015

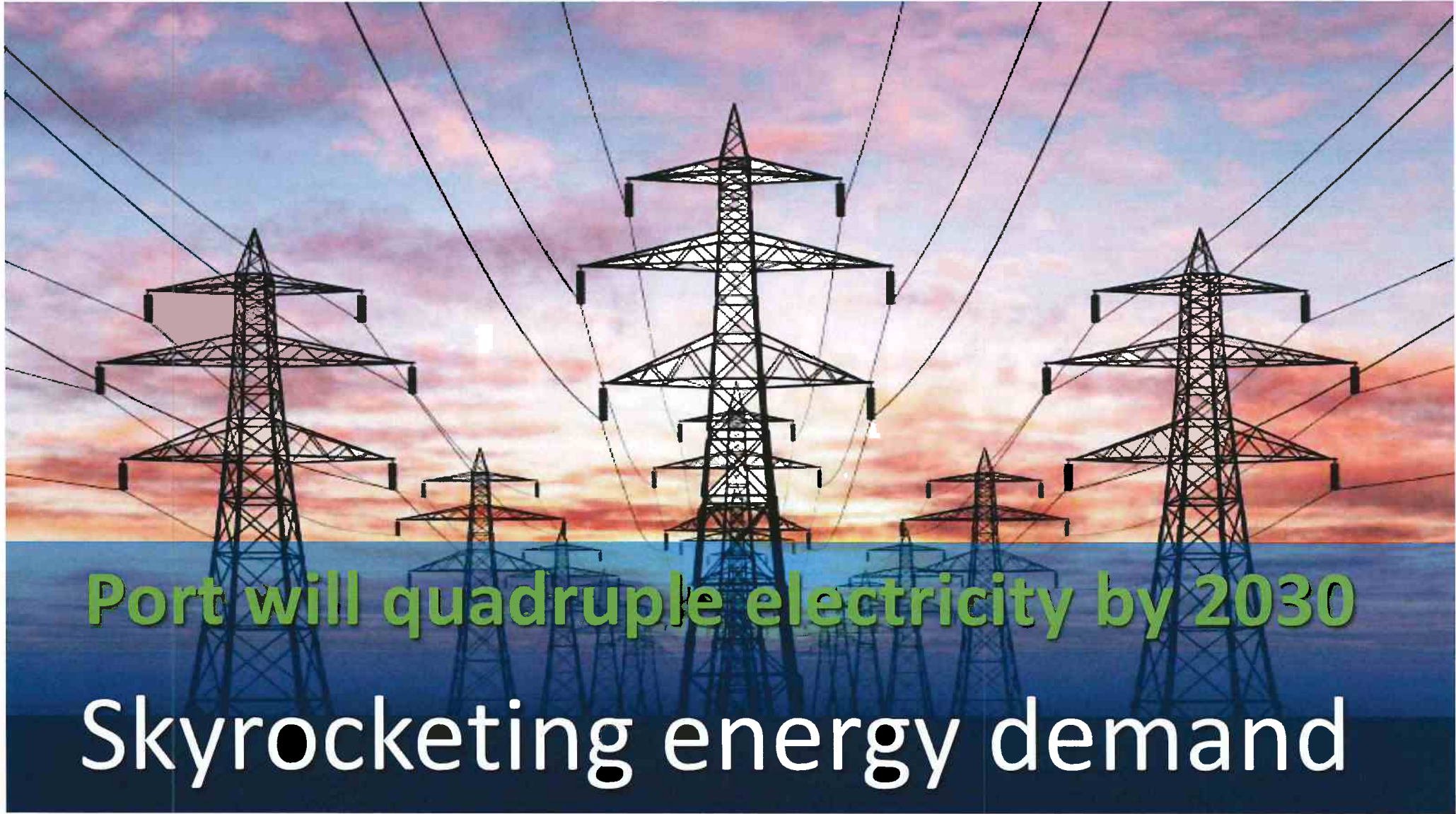
# Energy Island Update



Port of  
**LONG BEACH**  
*The Green Port*

**Heather Tomley**

Director of Environmental Planning



**Port will quadruple electricity by 2030**

**Skyrocketing energy demand**



A bright sun is positioned in the upper left quadrant of the image, casting a soft glow. The sky transitions from a pale yellow near the sun to a deeper orange and red towards the bottom right. The overall atmosphere is warm and energetic.

# Energy Island

## **Energy Island objectives:**

- **Clean, distributed power generation**
- **Energy security, operational resiliency**
- **Grid-connected, emergency grid-independent**
- **Long-term energy cost stability**
- **Clean fuels for mobile, stationary uses**

# Solar Power

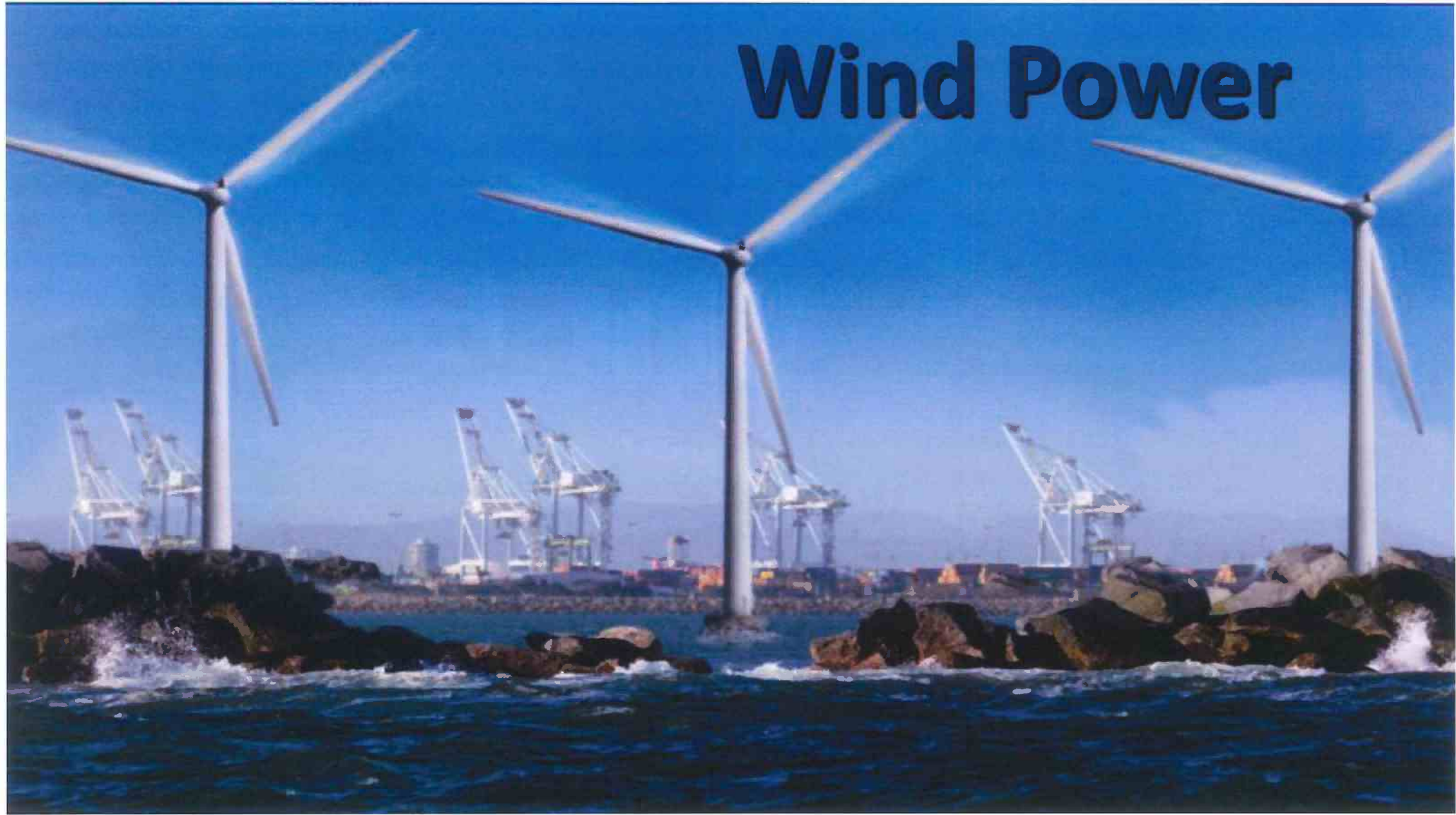






# Fuel Cells

# Wind Power







Clean Fuels



# Energy Island team structure

- Executive Advisory Board
- Executive Steering Committee
- Stakeholder forums
- Technical working groups

# Energy Island timeline

## Initiative Planning

- Initial Technology and Strategy Assessment
- Identification of Opportunities



## Project Solicitation

- Design
- RFPs and Bid Specifications



## Implementation

- Construction
- Operation