



CITY OF LONG BEACH

C-16

DEPARTMENT OF PUBLIC WORKS

333 WEST OCEAN BOULEVARD • LONG BEACH, CA 90802 • (562) 570-6383 • FAX (562) 570-6012

October 2, 2018

HONORABLE MAYOR AND CITY COUNCIL

City of Long Beach
California

RECOMMENDATION:

Authorize the City Manager, or designee, to grant an easement deed to the Los Angeles County Flood Control District for area located north of Spring Street and west of Lakewood Boulevard for the installation of Los Cerritos Channel Sub-Basin 4 Stormwater Capture Facility;

Enter into an installation, maintenance, and repair agreement with the City of Signal Hill and the Los Angeles County Flood Control District; and,

Accept State Clearing House Number 2016041083 for the project. (District 5)

DISCUSSION

The City of Long Beach (City), owner of the area located north of Spring Street and west of Lakewood Boulevard, and the City of Signal Hill are required by the Los Angeles Regional Water Quality Control Board to implement the Los Cerritos Channel Sub-Basin 4 Stormwater Capture Facility (Los Cerritos Channel). The purpose of Los Cerritos Channel is to increase water quality by diverting both cities' water flow from the channel into an infiltration system. To accommodate the new use, it is necessary that an easement be granted to Los Angeles County Flood Control District (Attachment A).

City staff conducted a review of affected agencies and there were no objections to the proposed easement. In accordance with the California Environmental Quality Act (CEQA), Final Environmental Impact Report State Clearing House Number 2016041083 was issued November 2017.

This matter was reviewed by Deputy City Attorney Amy R. Webber on September 4, 2018 and by Budget Analysis Officer Julissa José-Murray on September 13, 2018.

TIMING CONSIDERATIONS

City Council action on this matter is not time critical.

FISCAL IMPACT

An easement processing fee in the amount of \$2,156 was deposited in the General Fund (GF) in the Public Works Department (PW) transferred from the Capital Projects Fund (CP) in the Public Works Department (PW). There is no local job impact associated with this recommendation.

SUGGESTED ACTION:

Approve recommendation.

Respectfully submitted,



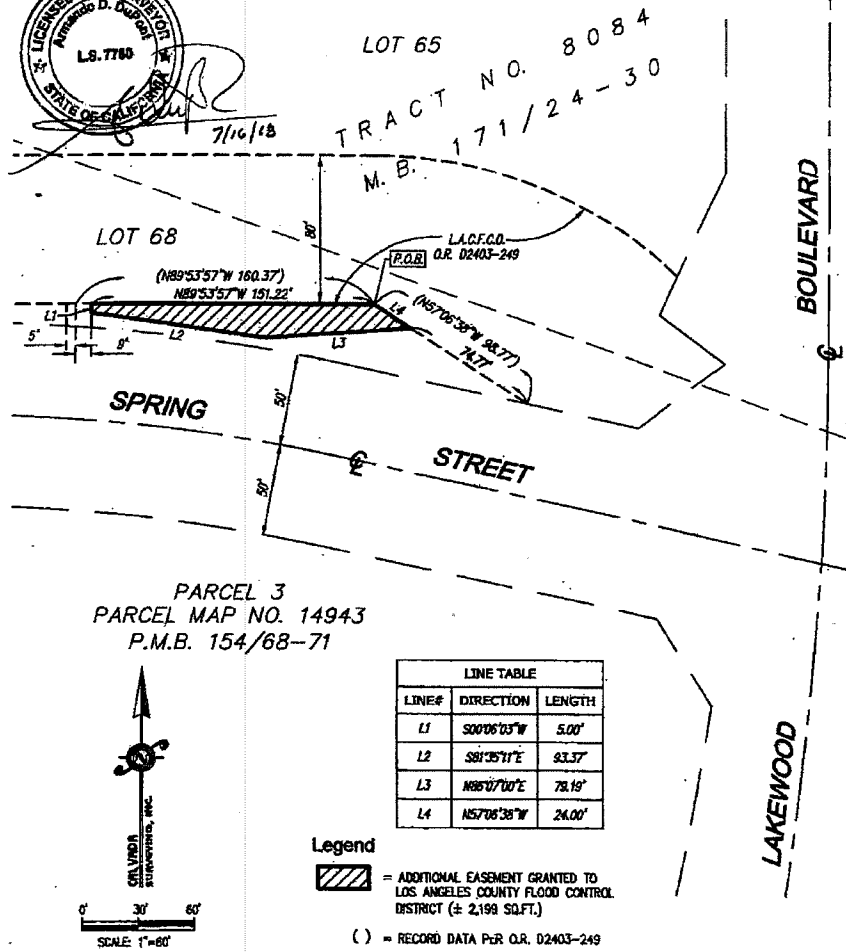
CRAIG A. BECK,
DIRECTOR OF PUBLIC WORKS

APPROVED:


PATRICK H. WEST
CITY MANAGER

EL:SDJ:JC

ATTACHMENT: A – GRANT OF EASEMENT SKETCH



LOT 65
TRACT NO. 8084
171/24-30
M.B.

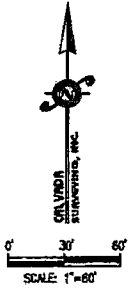
LOT 68
(N89°53'57"W 160.37')
N89°53'57"W 151.22'

L.A.C.F.C.D.
R.O.R. O.R. 02403-249

PARCEL 3
PARCEL MAP NO. 14943
P.M.B. 154/68-71

LINE TABLE		
LINE#	DIRECTION	LENGTH
L1	S00°06'03"W	5.00'
L2	S81°35'11"E	93.37'
L3	N88°07'00"E	78.19'
L4	N57°08'38"W	24.00'

Legend
 = ADDITIONAL EASEMENT GRANTED TO LOS ANGELES COUNTY FLOOD CONTROL DISTRICT (± 2,198 SQ.FT.)
 () = RECORD DATA P.R. O.R. 02403-249



CALVADA

SURVEYING, INC.
411 JENKS CIRCLE, SUITE 205, CORONA, CA 92630

PHONE: 951-260-8920 FAX: 951-260-9746

Job No. 181030

www.calvadai.com

SKETCH NO. 207EG
 SKETCH SHOWING EASEMENT OVER A
 PORTION OF LOT 68 OF TRACT NUMBER
 8408 GRANTED TO LOS ANGELES
 COUNTY FLOOD CONTROL DISTRICT FOR
 WATER PURPOSES

DEPARTMENT OF PUBLIC WORKS
 ENGINEERING BUREAU
 CITY OF LONG BEACH, CALIFORNIA
 ATTACHMENT A