

MAC Report

March 2019



SUBMITTED BY THE MARINE BUREAU



TABLE OF CONTENTS

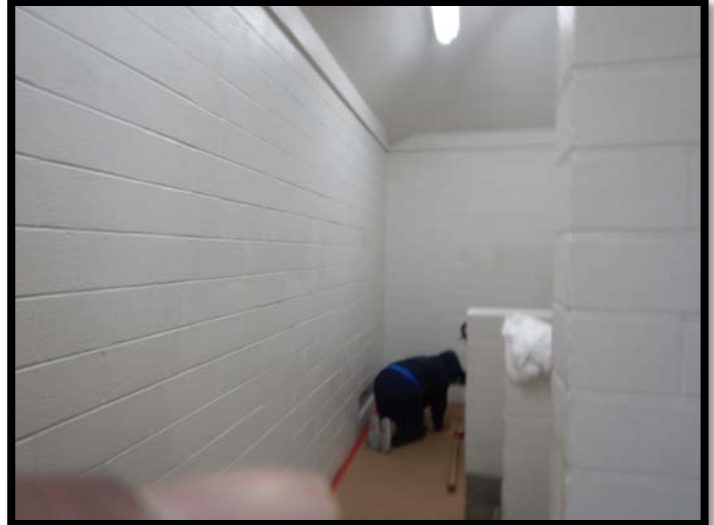
1. Marinas and Waterways
2. Beaches and Waterways
3. Marine Maintenance Work Order Graphs
4. Pump Out Inspection Report
5. Tide Table



MARINAS AND WATERWAYS

Accomplishments

- ❖ Staff painted the interior of the D-1 & D-2 public restrooms.
- ❖ Staff refurbished the rowing center dock at the Marine Stadium entrance.
- ❖ Staff constructed & painted the new ceilings and installed new LED lighting in five (5) of the restrooms at Belmont Pier.
- ❖ Staff removed and installed eight (8) new water supply lines on the North and South lock docks.
- ❖ Staff installed the letter sign in front of the Marine Patrol office.



Projects in the works

- ❖ Staff is in the process of replacing all the damaged and missing signs throughout the Long Beach Shoreline Marina. Staff has already replaced all the “Gangway” and “No Visitor” signs. 90% completed.
- ❖ Staff is in the process of obtaining the calculations and engineering plans to retrofit the existing twelve (12) booster pumps from a wet system to a dry fire suppression system in the Long Beach Shoreline Marina.
- ❖ Staff is in the process of making improvements to the Alamitos Bay Marina office including: painting the interior of the building. 50% completed.
- ❖ Staff is in the process of inspecting and tightening all the loose fingers throughout the Long Beach Shoreline Marina. 40% completed.
- ❖ Staff is in the process of replacing and adding hand dryers to all the restrooms throughout the Long Beach Shoreline Marina. 95% completed.
- ❖ Staff is in the process of replacing all the interior doors at the Alamitos Bay Marina office.



MARINAS AND WATERWAYS

- ❖ Staff is in the process of inspecting and replacing all the damaged gangway water supply lines throughout the Long Beach Shoreline Marina, as needed. 45% completed.
- ❖ Staff is in the process of repairing the restroom plumbing throughout the Long Beach Shoreline Marina. 35% completed.
- ❖ Staff is in the process of repairing concrete fingers throughout the Long Beach Shoreline Marina. 10% complete.
- ❖ Staff is in the process of repairing all the damaged concrete behind Spinnaker Bay near the seawall.
- ❖ Staff is in the process of replacing all wooden trash enclosure gates at Basins 1 & 2.
- ❖ Staff is in the process of installing signs at Station 35.



BEACHES AND WATERWAYS

Accomplishments

- ❖ Beach Maintenance staff removed over 285 tons of trash and debris from the beaches and inner bays.
- ❖ Beach Maintenance staff serviced over 300 trash receptacles during the month of March.
- ❖ Beach Maintenance staff built up and maintained the berm on the East Peninsula beach front, depositing over 9,000 tons of sand for the month of March.
- ❖ Beach Maintenance staff swept the bike/pedestrian path.
- ❖ Beach Maintenance staff replaced eight 2-yard dumpsters throughout Long Beach Shoreline Marina.
- ❖ Beach Maintenance staff consolidated and transferred the storm debris to the dump site.
- ❖ Beach Maintenance staff added 300 yards of sand at the Leeway Sailing Center adjacent to the beach.
- ❖ Beach Maintenance staff graded sand areas, depositing over 15 yards of sand in front of the Bay Shore Lifeguard station.
- ❖ Beach Maintenance staff removed over 1,100 yards of sand from around the Claremont parking lot retaining walls.
- ❖ Beach Maintenance staff recovered 400 yards of sand at Mother's Beach during low tide.
- ❖ Beach Maintenance staff graded and deposited 50 yards of sand at Sea Scouts beach.
- ❖ Beach Maintenance staff completed a mainline repair at 2nd Street and Marina Drive.
- ❖ Beach Maintenance staff planted 80 grapevines within the Bluff's slope at Bluff Park.
- ❖ Beach Maintenance Staff planted flowers and trimmed all the palm trees in preparation for the Acura Grand Prix of Long Beach 2019.
- ❖ Beach Maintenance staff planted flax around the Alamitos Bay Harbor Masters Office and parking lot.
- ❖ Beach Maintenance staff removed two dead palm trees and planted new windmill palms at La Bella Fontana park.



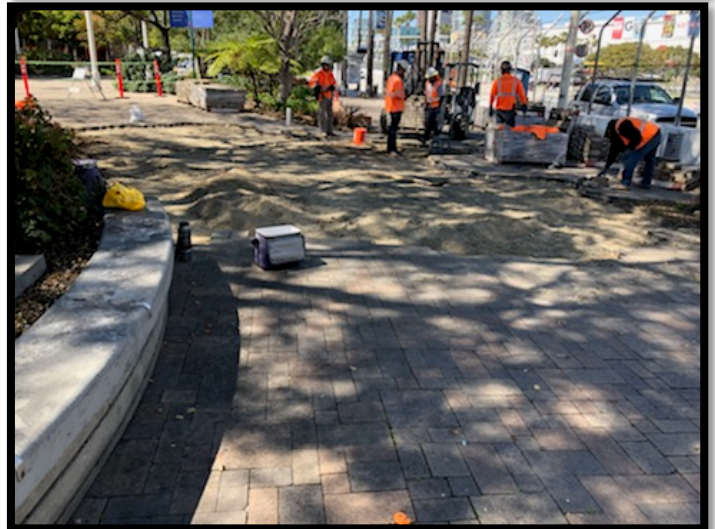
BEACHES AND WATERWAYS

- ❖ Beach Maintenance staff installed two up lights at each of the eight (8) newly planted California Pepper trees at La Bella Fontana park.
- ❖ Beach Maintenance staff completed a mainline repair within the Long Beach Shoreline Marina parking lot.
- ❖ Queensway Bay staff conducted a cleaning of all 60 basket filters in the Rainbow Lagoon; six days per week, twice per day. Staff replaces and cleans all 60 baskets once a month.
- ❖ Queensway Bay staff conducted daily removal of water borne debris and algae in the Rainbow Lagoon, Rainbow Harbor Marina and Long Beach Shoreline Marina using hand nets and a small skimmer boat.
- ❖ Queensway Bay staff mowed and detailed the Rainbow Lagoon Island grass area.
- ❖ Queensway Bay staff installed new Rainbow Lagoon information panels at three locations.
- ❖ Queensway Bay staff assisted with Hydro Jet of the main fill pipe.
- ❖ Queensway Bay staff removed trash from all the docks, three times per week.
- ❖ Queensway Bay staff conducted daily cleaning and maintenance of all trash skimmers on the docks, seven days per week.
- ❖ Queensway Bay staff worked with the contractor to repair the pavers located near the Promenade bridge.
- ❖ Queensway Bay staff assisted the contractor with the handrail repair near the Rainbow Lagoon Park.
- ❖ Queensway Bay staff operated the trash skimming vessel to remove storm debris from the Long Beach Shoreline Marina, Rainbow Harbor and Los Angeles River.
- ❖ Queensway Bay staff installed 17 electrical boxes, poles, and lighting fixtures along the Shoreline Marina gangways.



BEACHES AND WATERWAYS

- ❖ Queensway Bay staff conducted daily graffiti removal of the entire Rainbow Harbor area, including the Queensway bridge bike path and the Pier Point parking lot.
- ❖ Queensway Bay staff completed and closed 26 “Go Long Beach Request for graffiti removal in the month of March.
- ❖ Queensway Bay staff painted the exterior public restroom, and replaced all the door signs on the North side.
- ❖ Queensway Bay staff painted the Dolphin Fountain.
- ❖ Queensway Bay staff performed routine maintenance on the Wave and Dolphin Fountain 2-3 times per week.
- ❖ Queensway Bay staff worked with the contractor to polish and detail the interior wall of the Wave Fountain.
- ❖ Queensway Bay staff conducted daily monitoring of the landscape crew.
- ❖ Queensway Bay staff responded to several mainline breaks and coordinated the repairs.
- ❖ Queensway Bay staff coordinated with the contractor to remove all perimeter fencing at Marina Green park.

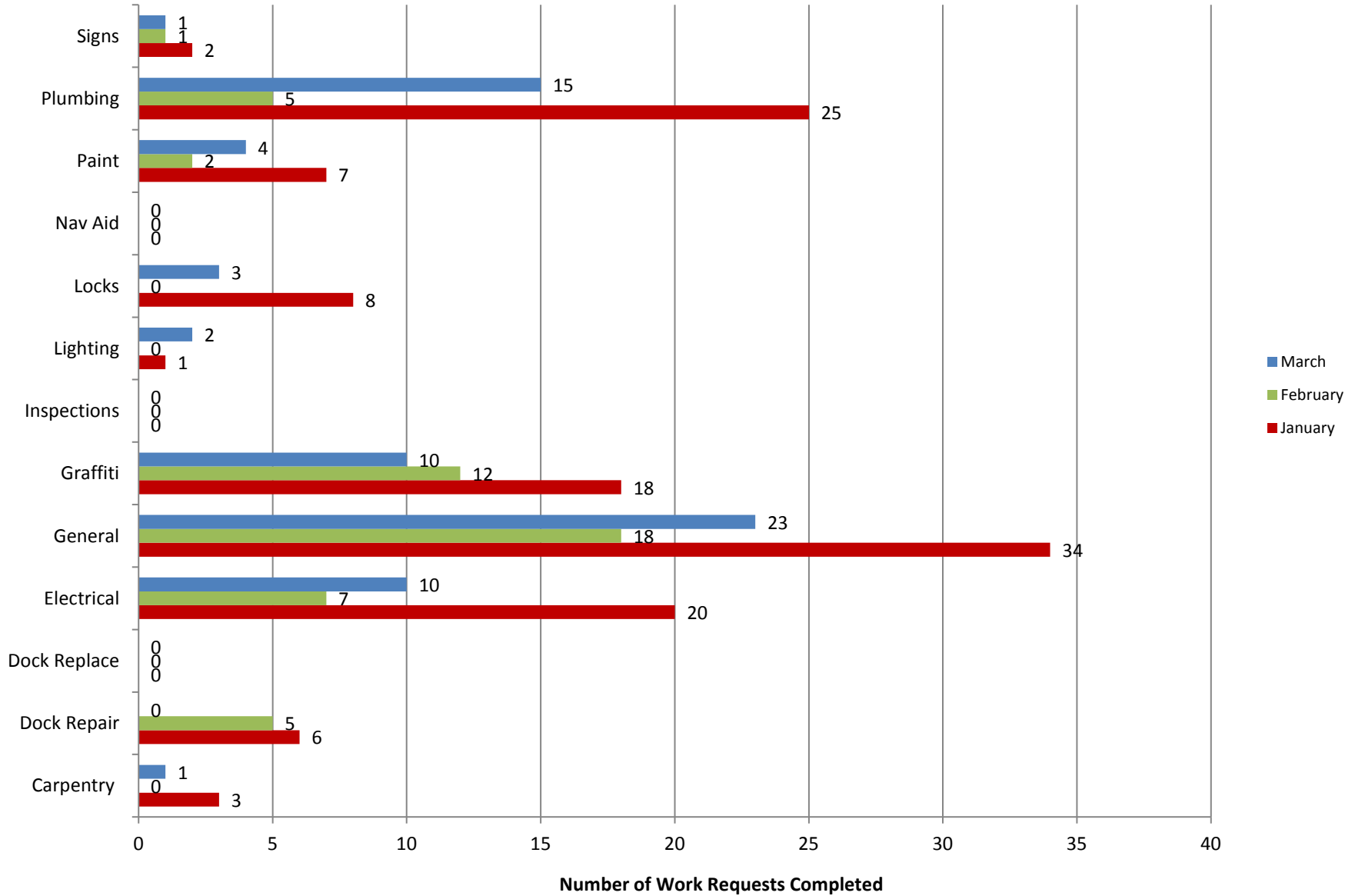


Projects in the works

- ❖ Beach Maintenance staff is continuing the process of rebuilding sections of the peninsula where erosion occurs.
- ❖ Beach Maintenance staff is continuing the process of removing the storm debris from the beaches and inner bays.
- ❖ Queensway Bay staff is in the process of preparing landscape upgrades for the Acura Grand Prix of Long Beach 2019.
- ❖ Queensway Bay staff is in the process of upgrading the blue navigational lights throughout the Rainbow Harbor Marina to more energy efficient LED lights. 75% complete.
- ❖ Queensway Bay staff is in the process of replacing the light fixtures at the Navy Memorial.
- ❖ Queensway Bay staff is in the process of LED retrofitting 40 bollard lights throughout at the South Shore walkway. 75% complete.

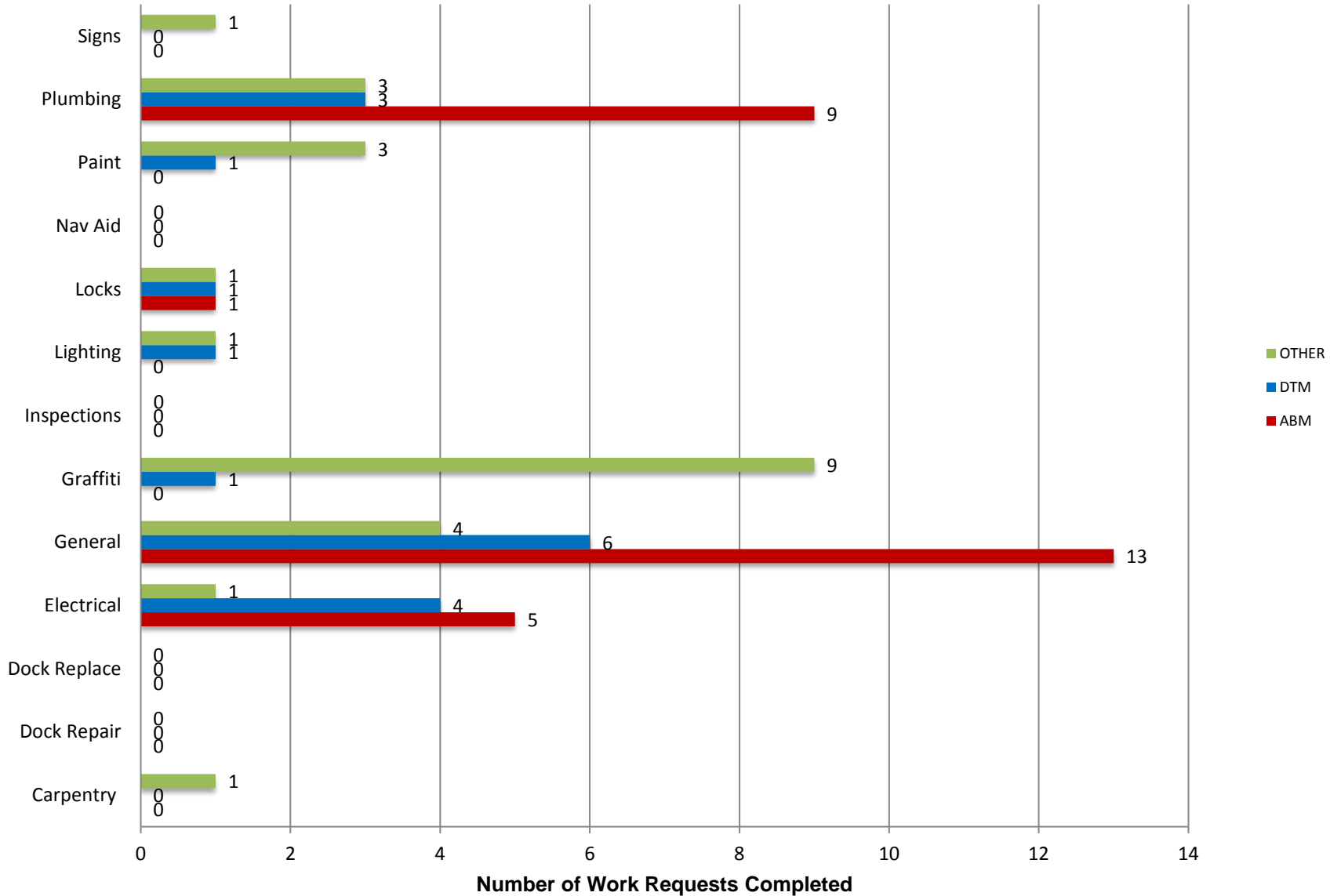
Marine Maintenance

Work Request Completed by Month



Marine Maintenance

Work Requests Completed by Location



PUMPOUT INSPECTION REPORT

Pump Out Location	Inspection Date			
	3/07/19	3/13/19	3/21/19	3/28/19
Gwy A, A	W	W	W	W
Gwy A, B	W	W	W	W
Parker's Public Dock, A	W	W	W	W
Parker's Public Dock, B	W	W	W	W
Parker's Public Dock, C	W	W	W	W
Dock 9	W	W	W	W
Basin 6 South	W	W	W	W
Davie's Launch Ramp, A	W	W	W	W
Station 31, A	W	W	W	W
Station 31, B	W	W	W	W
Station 21	W	W	W	W
Basin 1, Gwy 2	NW	W	W	W
Basin 1, Gwy 4	W	W	W	W
Basin 2, Gwy 8	W	W	W	W
Basin 2, Gwy 11	W	W	W	W
Basin 3, Gwy 16	W	W	W	W
Basin 3, Gwy 19	W	W	W	W
Basin 4, Gwy 28	W	W	W	W
Basin 4, Gwy 31	W	W	W	W
Basin 5, Gwy 33	W	W	W	W
Basin 5, Gwy 34	W	W	W	N/A

KEY
W = Working
NW = Not Working
N/A = Not Applicable

California, Los Angeles, Long Beach, Inner Harbor

April 2019

N 33° 46.3' / W 118° 12.6'

