



CITY OF LONG BEACH

DEPARTMENT OF PUBLIC WORKS

333 WEST OCEAN BOULEVARD • LONG BEACH, CA 90802 • (562) 570-6383 • FAX (562) 570-6012

February 21, 2017

HONORABLE MAYOR AND CITY COUNCIL
City of Long Beach
California

RECOMMENDATION:

Authorize the City Manager, or designee, to execute a Cooperative Agreement, and all other documents and amendments related thereto, with the County of Los Angeles, for a one-year pilot shuttle service to the Alamitos Bay Landing; accept up to \$100,000 on Proposition A grant funding; and,

Increase appropriations in the General Grants Fund (SR-120) in the Public Works Department (PW) by \$100,000, offset by grant revenue. (District 3)

DISCUSSION

The Public Works Department is working with the County of Los Angeles (County) to provide a free shuttle service to businesses at the Alamitos Bay Landing. Existing parking at the Alamitos Bay Landing is not sufficient to handle the increasing number of daily visitors, particularly during peak dining hours. This new shuttle service will increase accessibility for patrons of the businesses at the Alamitos Bay Landing by providing additional parking options.

The shuttle service will be a pilot program for a period of one year and will operate Friday to Sunday evenings, from 5:00 p.m. to midnight. The route will run along Marina Drive, from 2nd Street to the Alamitos Bay Landing, making approximately six stops every 30 minutes (Exhibit A). The shuttle bus complies with the Americans with Disabilities Act (ADA), is powered by natural gas, and is environmentally friendly.

City Council action is requested to enter into a Cooperative Agreement with the County to receive up to \$100,000 in County Proposition A funding to support the one-year shuttle program. Under this agreement, the County will reimburse the City for eligible costs incurred for the operation of the shuttle service.

This matter was reviewed by Deputy City Attorney Linda T. Vu on January 18, 2017 and by Budget Analysis Officer Julissa Jose-Murray on February 2, 2017.

TIMING CONSIDERATIONS

City Council action is requested on February 21, 2017, to execute the agreement to recover eligible City costs associated with the shuttle service.

FISCAL IMPACT

The Alamitos Bay shuttle service one-year pilot program will cost \$100,000. The cost of the program is fully funded by a grant made available by the County of Los Angeles. All eligible expenses will be fully offset by grant reimbursement revenue and no matching funds are required. The grant funds are not currently appropriated; therefore, an appropriation increase of \$100,000 is requested in the General Funds Fund (SR 120) in the Public Works Department (PW).

The Cooperative Agreement will facilitate parking for business patrons, as well as continued support to the local economy by assisting in the preservation of employment for employees residing in the City.

SUGGESTED ACTION:

Approve recommendation.

Respectfully submitted,



CRAIG A. BECK
DIRECTOR OF PUBLIC WORKS

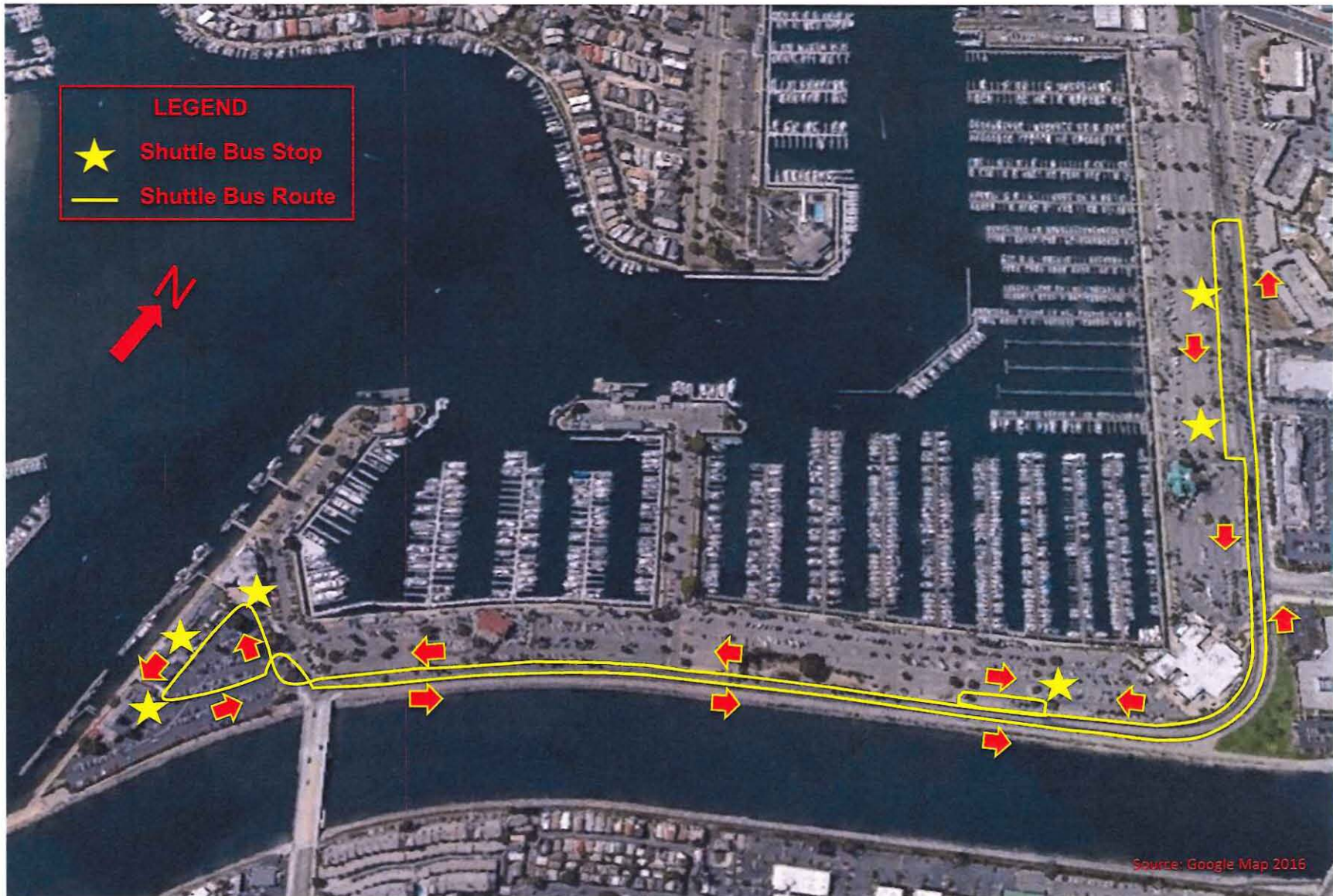
CB:SC:AP:GK:av
P\CL\AlamitosBayShuttleService V2.doc

ATTACHMENT: EXHIBIT A – SHUTTLE BUS ROUTE

APPROVED:



PATRICK H. WEST
CITY MANAGER



**Shuttle Service Available
Friday – Sunday, 5:00 p.m. to Midnight**