

CONSULTANT:

PROFESSIONAL SEAL:

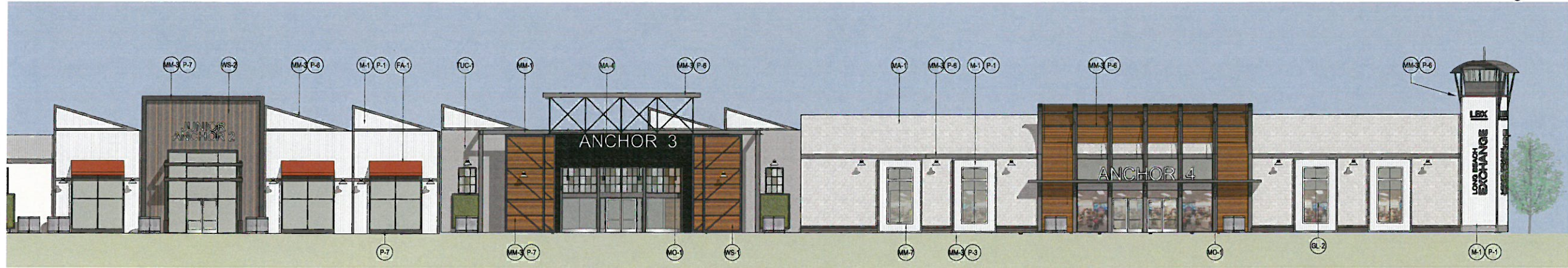
PROJECT TITLE  
**LBX**  
Long Beach Exchange  
South/West Corner of Carson Street and Lakewood Blvd  
Long Beach, California

CLIENT NAME  
**BWP**  
BURNHAM | WARD  
1100 Newport Center Drive  
Suite 200  
Newport Beach, California  
949-760-9150

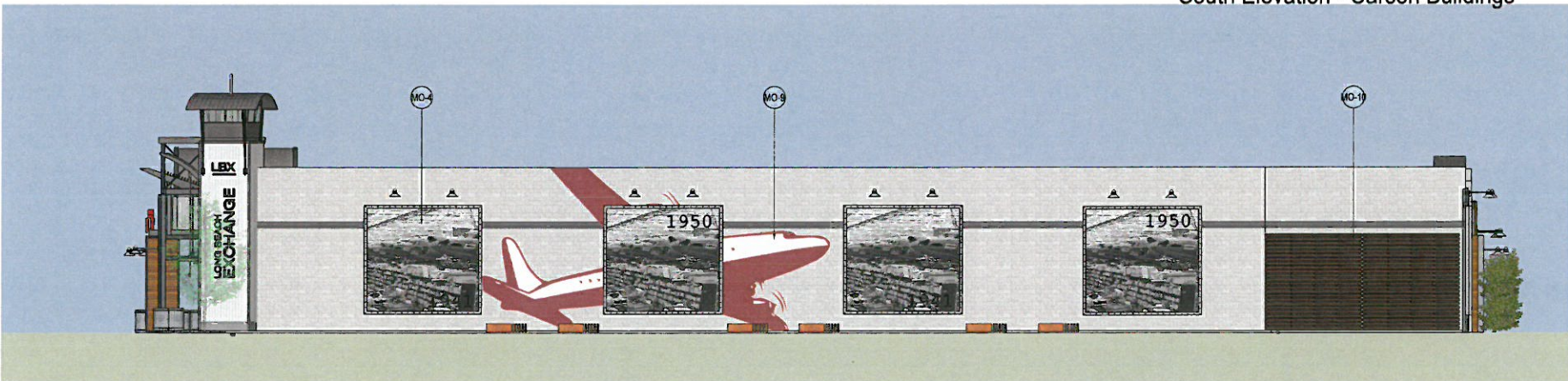
SHEET NAME  
EXTERIOR ELEVATIONS  
CARSON BUILDINGS



Anchor 1 & Anchor 2  
South Elevation - Carson Buildings



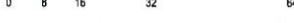
Anchor 3 & Anchor 4  
South Elevation - Carson Buildings



Anchor 4  
East Elevation - Carson Buildings/ Lakewood Blvd

**KEYNOTES**

SCALE: 1/16"=1'-0"



**METALS:**

- (M-1) METAL CORRUGATED PANELS 6 INCHES SPACING
- (M-2) METAL CORRUGATED PANELS 8 INCHES SPACING
- (M-3) METAL CORRUGATED PANELS 16 INCHES SPACING
- (M-4) METAL CORRUGATED PANELS 24 INCHES SPACING

**MISC. METALS:**

- (MM-5) STEEL COLUMN OR BEAM
- (MM-6) STEEL TUBE (HORIZONTAL)
- (MM-7) METAL TRIM
- (MM-4) METAL AWNING WITH METAL ROD TIE BACKS
- (MM-5) GALVANIZED PERFORATED MESH
- (MM-6) WROUGHT IRON FENCING
- (MM-7) ALUMINUM STORE FRONT SYSTEM CLEAR ANODIZE ALUMINUM
- (MM-8) ALUMINUM STOREFRONT SYSTEM CUSTOM BLUE COLOR
- (MM-9) ALUMINUM STORE FRONT SYSTEM BLACK

**MISC. METALS:**

- (MM-10) ALUMINUM STORE FRONT SYSTEM GRAY
- (MM-11) MOTTLED GRAY METAL PANEL
- (MM-12) MOTTLED DARK GRAY METAL PANEL
- (MM-13) CLEAR ANODIZED METAL
- (MM-14) METAL AWNING WITH CABLE TIE BACKS

**WOODS:**

- (WS-1) WOOD STAIN 1 - ON CLEAR ON IPE OR IPE LOOK WOOD
- (WS-2) WOOD STAIN 2 - WHITE-WASH GRAY
- (WS-3) WOOD STAIN 3 - MULTI COLORED WARM STAIN
- (WS-4) WOOD STAIN 4 - CLEAR STAIN
- (WS-5) WOOD STAIN 5 - WALNUT COLOR
- (WS-6) WOOD STAIN 6

**PLASTER:**

- (PL-1) PLASTER FINISH 1 - SMOOTH
- (PL-2) PLASTER FINSH 2 - STIPPLE

**PAINT BY DUNN EDWARDS PAINT:**

- (P-1) PAINT 1 - DEW386 PRECIOUS PEARLS
- (P-2) PAINT 2 - DET600 DOLPHIN TALES
- (P-3) PAINT 3 - DE6367 COVERED IN PLATINUM
- (P-4) PAINT 4 - DE6368 WALRUS
- (P-5) PAINT 5 - DE6369 LEGENDARY GRAY
- (P-6) PAINT 6 - DE6370 CHARCOAL SMUDGE
- (P-7) PAINT 7 - DE6371 BLACKJACK
- (P-8) PAINT 8 - DEA187 BLACK
- (P-9) PAINT 9 - CUSTOM BLUE
- (P-10) PAINT 10 - DE8213 FINE GRAIN

**MASONRY:**

- (MA-1) MASONRY - CONCRETE PRECISION SMOOTH COLOR LIGHT GRAY
- (MA-2) MASONRY - CONCRETE PRECISION SMOOTH COLOR MEDIUM GRAY
- (MA-3) MASONRY - CONCRETE PRECISION SMOOTH COLOR DARK GRAY
- (MA-4) MASONRY - BLACK SMOKED BRICK
- (MA-5) MASONRY - PAINTED OFF WHITE BRICK

**TILT-UP CONCRETE:**

- (TUC-1) TILT-UP CONCRETE - NATURAL CONCRETE COLOR
- (TUC-2) TILT-UP CONCRETE - PAINTED
- (TUC-3) TILT-UP CONCRETE - VERTICAL CORRUGATED FORMLINER

**GLAZING:**

- (GL-1) GLAZING 1 - MULTI COLOR GLAZING 3-COLORS
- (GL-2) GLAZING 2 - CLEAR GLAZING WITH SLIGHT TINT

**FABRIC:**

- (FA-1) FABRIC AWNING - ORANGE
- (FA-2) FABRIC AWNING - NEUTRAL COLOR, GRAY OR OFF-WHITE

**MISC. OBJECTS:**

- (MO-1) LIGHT FIXTURE - PENDANT
- (MO-2) LIGHT FIXTURE - WALL SCONCE
- (MO-3) GREEN SCREEN
- (MO-4) FRAMED OVERSIZE SUPER GRAPHICS PROVIDED IN SIGN PROGRAM
- (MO-5) DECORATIVE PLANTER POTS / BOXES
- (MO-6) TILE 1 - GRAY STAGGERED TILE
- (MO-7) TILE 2 - LARGE CONCRETE LOOK TILE
- (MO-8) WOOD TRELLIS
- (MO-9) OVERSIZE SUPER GRAPHICS PROVIDED IN SIGN PROGRAM
- (MO-10) DECORATIVE SCREEN GATE WOOD SLATS WS-5
- (MO-11) NATURAL CONCRETE BASE
- (MO-12) METAL STORAGE CONTAINER

NO.	DATE	DESCRIPTION
3-2-16	3-2-16	Prelim. Site Plan Review Submittal
6-2-16	6-2-16	1st Site Plan Review Submittal
7-29-16	7-29-16	2nd Site Plan Review Submittal

JOB NO: 15049  
DATE ISSUED: 6-20-16  
DRAWN BY: SPZ, CMH, MAP  
CHECK BY: CMH

SHEET NO:  
**A3.1**

CONSULTANT:

PROFESSIONAL SEAL:

PROJECT TITLE  
**LBX**  
**Long Beach Exchange**  
South/West Corner of Carson Street  
and Lakewood Blvd  
Long Beach, California

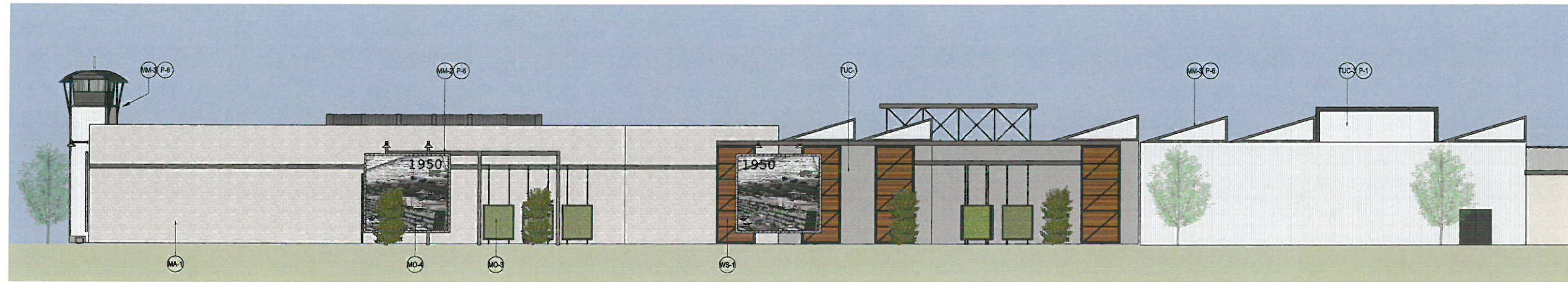
CLIENT NAME  
**BWP**  
**BURNHAMWARD**  
1100 Newport Center Drive  
Suite 200  
Newport Beach, California  
949-760-9150

SHEET NAME  
**EXTERIOR ELEVATIONS  
CARSON BUILDINGS**

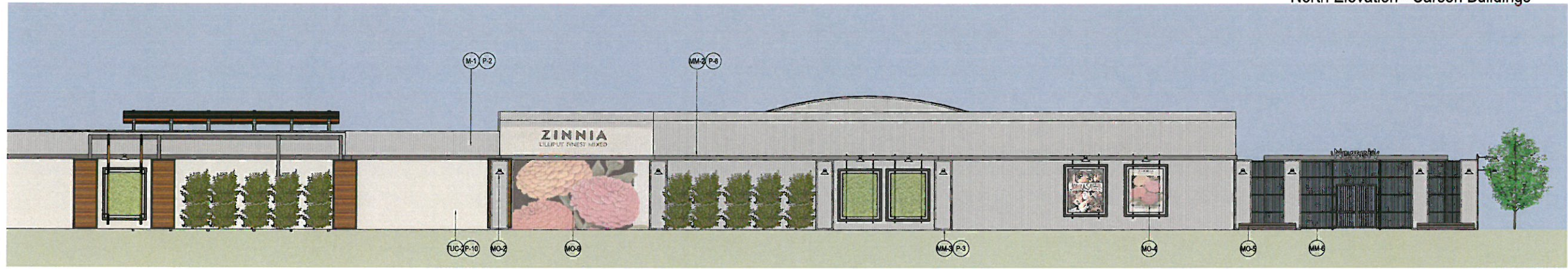
NO.	DATE	DESCRIPTION
3-2-16		Prelim. Site Plan Review Submittal
6-2-16		1st Site Plan Review Submittal
7-26-16		2nd Site Plan Review Submittal

JOB NO: **15049**  
DATE ISSUED: **6-20-16**  
DRAWN BY: **SPZ, CMH, MAP**  
CHECK BY: **CMH**

SHEET NO:  
**A3.2**



**Anchor 3 & Anchor 4  
North Elevation - Carson Buildings**



**Anchor 1 & Anchor 2  
North Elevation - Carson Buildings**



**Anchor 1  
West Elevation - Carson Buildings/ Worsham Avenue**

**KEYNOTES**

SCALE: 1/16"=1'-0"



**METALS:**

- (M-1) METAL CORRUGATED PANELS  
6 INCHES SPACING
- (M-2) METAL CORRUGATED PANELS  
8 INCHES SPACING
- (M-3) METAL CORRUGATED PANELS  
16 INCHES SPACING
- (M-4) METAL CORRUGATED PANELS  
24 INCHES SPACING

**MISC. METALS:**

- (MM-1) STEEL COLUMN OR BEAM
- (MM-2) STEEL TUBE (HORIZONTAL)
- (MM-3) METAL TRIM
- (MM-4) METAL AWNING WITH METAL ROD  
TIE BACKS
- (MM-5) GALVANIZED PERFORATED MESH
- (MM-6) WROUGHT IRON FENCING
- (MM-7) ALUMINUM STORE FRONT SYSTEM  
CLEAR ANODIZE ALUMINUM
- (MM-8) ALUMINUM STOREFRONT SYSTEM  
CUSTOM BLUE COLOR
- (MM-9) ALUMINUM STORE FRONT SYSTEM  
BLACK

**MISC. METALS:**

- (MM-1) ALUMINUM STORE FRONT SYSTEM  
GRAY
- (MM-2) MOTTLED GRAY METAL PANEL
- (MM-3) MOTTLED DARK GRAY METAL PANEL
- (MM-4) CLEAR ANODIZED METAL
- (MM-5) METAL AWNING WITH CABLE  
TIE BACKS

**WOODS:**

- (WS-1) WOOD STAIN 1 - ON CLEAR ON IPE OR IPE  
LOOK WOOD
- (WS-2) WOOD STAIN 2 - WHITE-WASH GRAY
- (WS-3) WOOD STAIN 3 - MULTI COLORED WARM STAIN
- (WS-4) WOOD STAIN 4 - CLEAR STAIN
- (WS-5) WOOD STAIN 5 - WALNUT COLOR
- (WS-6) WOOD STAIN 6  
WOOD STAIN 6

**PLASTER:**

- (PL-1) PLASTER FINISH 1 - SMOOTH
- (PL-2) PLASTER FINSH 2 - STIPPLE

**PAINT BY DUNN EDWARDS PAINT :**

- (P-1) PAINT 1 - DEW386 PRECIOUS PEARLS
- (P-2) PAINT 2 - DET600 DOLPHIN TALES
- (P-3) PAINT 3 - DE6367 COVERED IN PLATINUM
- (P-4) PAINT 4 - DE6368 WALRUS
- (P-5) PAINT 5 - DE6369 LEGENDARY GRAY
- (P-6) PAINT 6 - DE6370 CHARCOAL SMUDGE
- (P-7) PAINT 7 - DE6371 BLACKJACK
- (P-8) PAINT 8 - DEA187 BLACK
- (P-9) PAINT 9 - CUSTOM BLUE
- (P-10) PAINT 10 - DE6213 FINE GRAIN

**MASONRY:**

- (MA-1) MASONRY - CONCRETE PRECISION SMOOTH  
COLOR LIGHT GRAY
- (MA-2) MASONRY - CONCRETE PRECISION SMOOTH  
COLOR MEDIUM GRAY
- (MA-3) MASONRY - CONCRETE PRECISION SMOOTH  
COLOR DARK GRAY
- (MA-4) MASONRY - BLACK SMOKED BRICK
- (MA-5) MASONRY - PAINTED OFF WHITE BRICK

**TILT-UP CONCRETE:**

- (TUC-1) TILT-UP CONCRETE - NATURAL CONCRETE  
COLOR
- (TUC-2) TILT-UP CONCRETE - PAINTED
- (TUC-3) TILT-UP CONCRETE - VERTICAL CORRUGATED  
FORMLINER

**GLAZING:**

- (GL-1) GLAZING 1 - MULTI COLOR GLAZING  
3-COLORS
- (GL-2) GLAZING 2 - CLEAR GLAZING WITH SLIGHT TINT

**FABRIC:**

- (FA-1) FABRIC AWNING - ORANGE
- (FA-2) FABRIC AWNING - NEUTRAL COLOR, GRAY  
OR OFF-WHITE

**MISC. OBJECTS:**

- (MO-1) LIGHT FIXTURE - PENDANT
- (MO-2) LIGHT FIXTURE - WALL SCONCE
- (MO-3) GREEN SCREEN
- (MO-4) FRAMED OVERSIZE SUPER GRAPHICS PROVIDED  
IN SIGN PROGRAM
- (MO-5) DECORATIVE PLANTER POTS / BOXES
- (MO-6) TILE 1 - GRAY STAGGERED TILE
- (MO-7) TILE 2 - LARGE CONCRETE LOOK TILE
- (MO-8) WOOD TRELLIS
- (MO-9) OVERSIZE SUPER GRAPHICS  
PROVIDED IN SIGN PROGRAM
- (MO-10) DECORATIVE SCREEN GATE WOOD SLATS  
WS-5
- (MO-11) NATURAL CONCRETE BASE
- (MO-12) METAL STORAGE CONTAINER

CONSULTANT:

PROFESSIONAL SEAL:

PROJECT TITLE  
**LBX**  
Long Beach Exchange  
South/West Corner of Carson Street and Lakewood Blvd  
Long Beach, California

CLIENT NAME  
**BWP**  
BURNHAM | WARD  
1100 Newport Center Drive  
Suite 200  
Newport Beach, California  
949-760-9150

SHEET NAME  
EXTERIOR ELEVATIONS  
LAKEWOOD BUILDING

NO.	DATE	DESCRIPTION
3-2-16		Preim. Site Plan Review Submittal
6-2-16		1st Site Plan Review Submittal
7-26-16		2nd Site Plan Review Submittal

JOB NO: 15049  
DATE ISSUED: 6-20-16  
DRAWN BY: SPZ, CMH, MAP  
CHECK BY: CMH

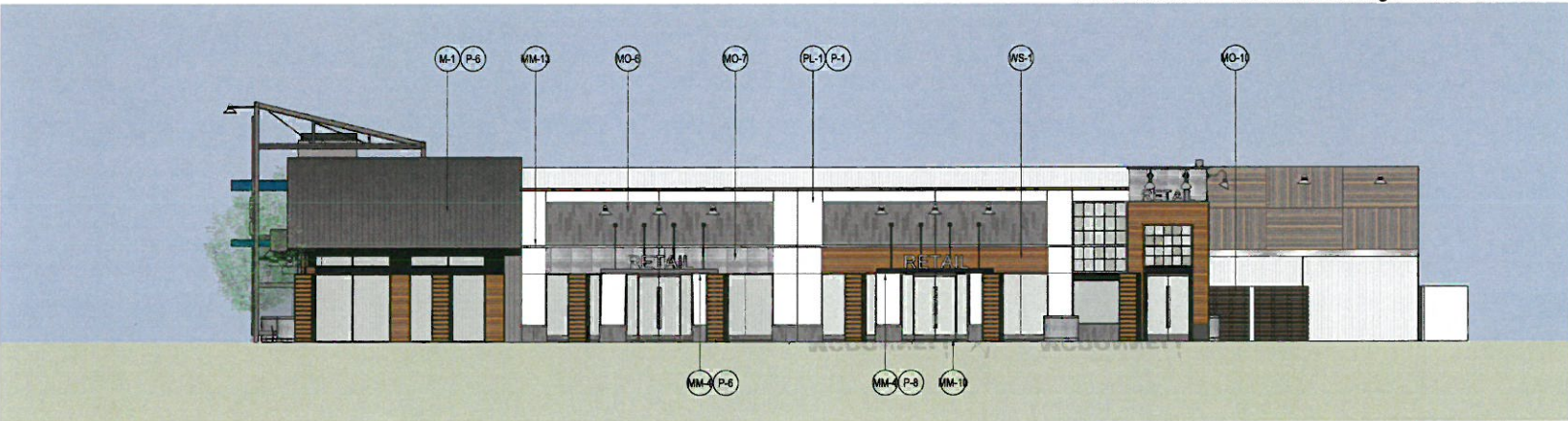
SHEET NO:  
**A3.3**



Anchor 5 & Anchor 6  
East Elevation - Lakewood Buildings/ Lakewood Blvd



Anchor 5 & Junior Anchor 1  
East Elevation - Lakewood Buildings/ Lakewood Blvd



Junior Anchor 1  
North Elevation - Lakewood Building/ McGowen Street

**KEYNOTES**  
SCALE: 1/16"=1'-0"

**METALS:**

- (M-1) METAL CORRUGATED PANELS 6 INCHES SPACING
- (M-2) METAL CORRUGATED PANELS 8 INCHES SPACING
- (M-3) METAL CORRUGATED PANELS 16 INCHES SPACING
- (M-4) METAL CORRUGATED PANELS 24 INCHES SPACING

**MISC. METALS:**

- (MM-1) STEEL COLUMN OR BEAM
- (MM-2) STEEL TUBE (HORIZONTAL)
- (MM-3) METAL TRIM
- (MM-4) METAL AWNING WITH METAL ROD TIE BACKS
- (MM-5) GALVANIZED PERFORATED MESH
- (MM-6) WROUGHT IRON FENCING
- (MM-7) ALUMINUM STORE FRONT SYSTEM CLEAR ANODIZE ALUMINUM
- (MM-8) ALUMINUM STOREFRONT SYSTEM CUSTOM BLUE COLOR
- (MM-9) ALUMINUM STORE FRONT SYSTEM BLACK

**MISC. METALS:**

- (MM-10) ALUMINUM STORE FRONT SYSTEM GRAY
- (MM-11) MOTTLED GRAY METAL PANEL
- (MM-12) MOTTLED DARK GRAY METAL PANEL
- (MM-13) CLEAR ANODIZED METAL
- (MM-14) METAL AWNING WITH CABLE TIE BACKS

**WOODS:**

- (WS-1) WOOD STAIN 1 - ON CLEAR ON IPE OR IPE LOOK WOOD
- (WS-2) WOOD STAIN 2 - WHITE-WASH GRAY
- (WS-3) WOOD STAIN 3 - MULTI COLORED WARM STAIN
- (WS-4) WOOD STAIN 4 - CLEAR STAIN
- (WS-5) WOOD STAIN 5 - WALNUT COLOR
- (WS-6) WOOD STAIN 6

**PLASTER:**

- (PL-1) PLASTER FINISH 1 - SMOOTH
- (PL-2) PLASTER FINSH 2 - STIPPLE

**PAINT BY DUNN EDWARDS PAINT:**

- (P-1) PAINT 1 - DEW388 PRECIOUS PEARLS
- (P-2) PAINT 2 - DET600 DOLPHIN TALES
- (P-3) PAINT 3 - DE6367 COVERED IN PLATINUM
- (P-4) PAINT 4 - DE6368 WALRUS
- (P-5) PAINT 5 - DE6369 LEGENDARY GRAY
- (P-6) PAINT 6 - DE6370 CHARCOAL SMUDGE
- (P-7) PAINT 7 - DE6371 BLACKJACK
- (P-8) PAINT 8 - DE4167 BLACK
- (P-9) PAINT 9 - CUSTOM BLUE
- (P-10) Paint 10 - DE6213 FINE GRAIN

**MASONRY:**

- (MA-1) MASONRY - CONCRETE PRECISION SMOOTH COLOR LIGHT GRAY
- (MA-2) MASONRY - CONCRETE PRECISION SMOOTH COLOR MEDIUM GRAY
- (MA-3) MASONRY - CONCRETE PRECISION SMOOTH COLOR DARK GRAY
- (MA-4) MASONRY - BLACK SMOKED BRICK
- (MA-5) MASONRY - PAINTED OFF WHITE BRICK

**TILT-UP CONCRETE:**

- (TUC-1) TILT-UP CONCRETE - NATURAL CONCRETE COLOR
- (TUC-2) TILT-UP CONCRETE - PAINTED
- (TUC-3) TILT-UP CONCRETE - VERTICAL CORRUGATED FORMLINER

**GLAZING:**

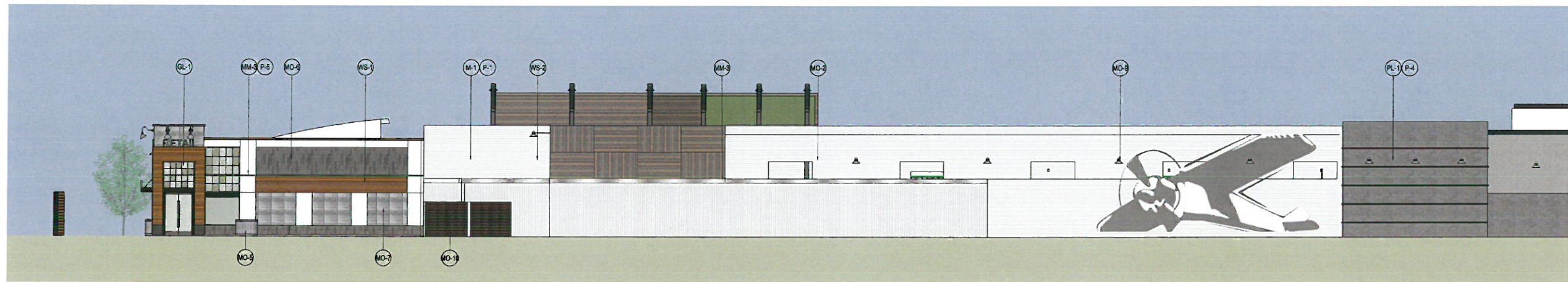
- (GL-1) GLAZING 1 - MULTI COLOR GLAZING 3-COLORS
- (GL-2) GLAZING 2 - CLEAR GLAZING WITH SLIGHT TINT

**FABRIC:**

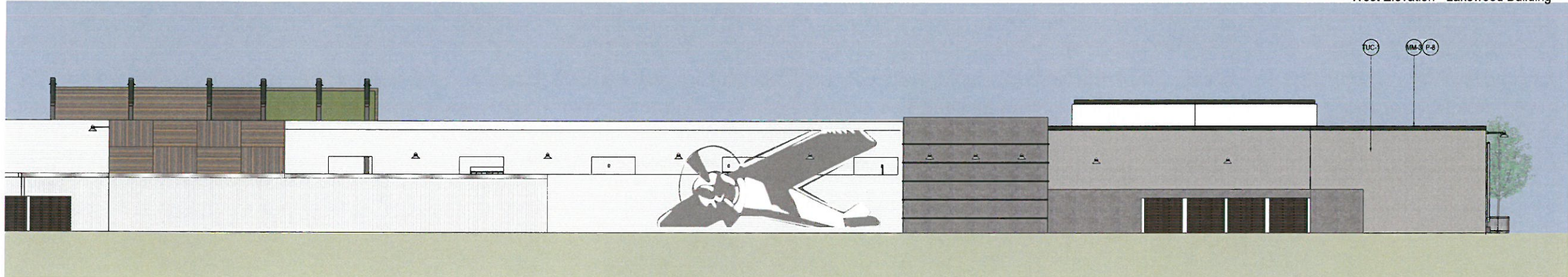
- (FA-1) FABRIC AWNING - ORANGE
- (FA-2) FABRIC AWNING - NEUTRAL COLOR, GRAY OR OFF-WHITE

**MISC. OBJECTS:**

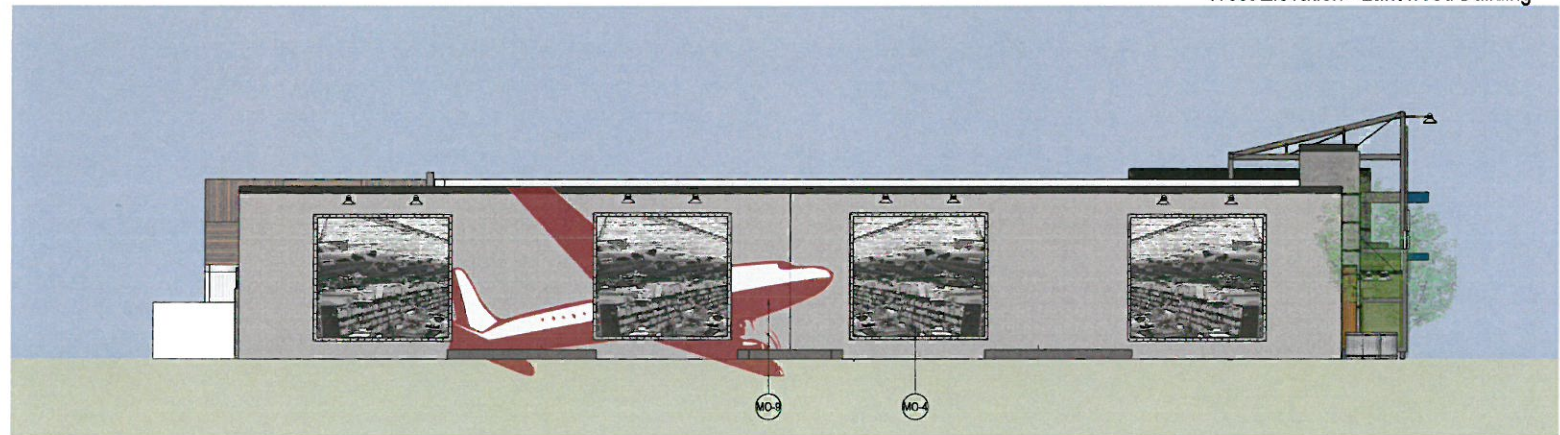
- (MO-1) LIGHT FIXTURE - PENDANT
- (MO-2) LIGHT FIXTURE - WALL SCONCE
- (MO-3) GREEN SCREEN
- (MO-4) FRAMED OVERSIZE SUPER GRAPHICS PROVIDED IN SIGN PROGRAM
- (MO-5) DECORATIVE PLANTER POTS / BOXES
- (MO-6) TILE 1 - GRAY STAGGERED TILE
- (MO-7) TILE 2 - LARGE CONCRETE LOOK TILE
- (MO-8) WOOD TRELLIS
- (MO-9) OVERSIZE SUPER GRAPHICS PROVIDED IN SIGN PROGRAM
- (MO-10) DECORATIVE SCREEN GATE WOOD SLATS WS-5
- (MO-11) NATURAL CONCRETE BASE
- (MO-12) METAL STORAGE CONTAINER



Junior Anchor 1 & Anchor 5  
West Elevation - Lakewood Building



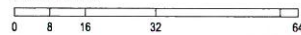
Anchor 5 & Anchor 6  
West Elevation - Lakewood Building



Anchor 6  
South Elevation - Lakewood Building

**KEYNOTES**

SCALE: 1/8"=1'-0"



**METALS:**

- (M-1) METAL CORRUGATED PANELS  
6 INCHES SPACING
- (M-2) METAL CORRUGATED PANELS  
8 INCHES SPACING
- (M-3) METAL CORRUGATED PANELS  
16 INCHES SPACING
- (M-4) METAL CORRUGATED PANELS  
24 INCHES SPACING

**MISC. METALS:**

- (MM-1) STEEL COLUMN OR BEAM
- (MM-2) STEEL TUBE (HORIZONTAL)
- (MM-3) METAL TRIM
- (MM-4) METAL AWNING WITH METAL ROD  
TIE BACKS
- (MM-5) GALVANIZED PERFORATED MESH
- (MM-6) WROUGHT IRON FENCING
- (MM-7) ALUMINUM STORE FRONT SYSTEM  
CLEAR ANODIZE ALUMINUM
- (MM-8) ALUMINUM STOREFRONT SYSTEM  
CUSTOM BLUE COLOR
- (MM-9) ALUMINUM STORE FRONT SYSTEM  
BLACK

**MISC. METALS:**

- (MM-10) ALUMINUM STORE FRONT SYSTEM  
GRAY
- (MM-11) MOTTLED GRAY METAL PANEL
- (MM-12) MOTTLED DARK GRAY METAL PANEL
- (MM-13) CLEAR ANODIZED METAL
- (MM-14) METAL AWNING WITH CABLE  
TIE BACKS

**WOODS:**

- (WS-1) WOOD STAIN 1 - ON CLEAR ON IPE OR IPE  
LOOK WOOD
- (WS-2) WOOD STAIN 2 - WHITE-WASH GRAY
- (WS-3) WOOD STAIN 3 - MULTI COLORED WARM STAIN
- (WS-4) WOOD STAIN 4 - CLEAR STAIN
- (WS-5) WOOD STAIN 5 - WALNUT COLOR
- (WS-6) WOOD STAIN 6  
WOOD STAIN 6

**PLASTER:**

- (PL-1) PLASTER FINISH 1 - SMOOTH
- (PL-2) PLASTER FINISH 2 - STIPPLE

**PAINT** BY DUNN EDWARDS PAINT :

- (P-1) PAINT 1 - DEW386 PRECIOUS PEARLS  
COLOR LIGHT GRAY
- (P-2) PAINT 2 - DE1600 DOLPHIN TALES
- (P-3) PAINT 3 - DE6367 COVERED IN PLATINUM
- (P-4) PAINT 4 - DE6368 WALRUS
- (P-5) PAINT 5 - DE6369 LEGENDARY GRAY
- (P-6) PAINT 6 - DE6370 CHARCOAL SMUDGE
- (P-7) PAINT 7 - DE6371 BLACKJACK
- (P-8) PAINT 8 - DE4187 BLACK
- (P-9) PAINT 9 - CUSTOM BLUE
- (P-10) PAINT 10 - DE6213 FINE GRAIN

**MASONRY:**

- (MA-1) MASONRY - CONCRETE PRECISION SMOOTH  
COLOR LIGHT GRAY
- (MA-2) MASONRY - CONCRETE PRECISION SMOOTH  
COLOR MEDIUM GRAY
- (MA-3) MASONRY - CONCRETE PRECISION SMOOTH  
COLOR DARK GRAY
- (MA-4) MASONRY - BLACK SMOKED BRICK
- (MA-5) MASONRY - PAINTED OFF WHITE BRICK

**TILT-UP CONCRETE:**

- (TUC-1) TILT-UP CONCRETE - NATURAL CONCRETE  
COLOR
- (TUC-2) TILT-UP CONCRETE - PAINTED
- (TUC-3) TILT-UP CONCRETE - VERTICAL CORRUGATED  
FORMLINER

**GLAZING:**

- (GL-1) GLAZING 1 - MULTI COLOR GLAZING  
3-COLORS
- (GL-2) GLAZING 2 - CLEAR GLAZING WITH SLIGHT TINT

**FABRIC:**

- (FA-1) FABRIC AWNING - ORANGE
- (FA-2) FABRIC AWNING - NEUTRAL COLOR, GRAY  
OR OFF-WHITE

**MISC. OBJECTS:**

- (MO-1) LIGHT FIXTURE - PENDANT
- (MO-2) LIGHT FIXTURE - WALL SCONCE
- (MO-3) GREEN SCREEN
- (MO-4) FRAMED OVERSIZE SUPER GRAPHICS PROVIDED  
IN SIGN PROGRAM
- (MO-5) DECORATIVE PLANTER POTS / BOXES
- (MO-6) TILE 1 - GRAY STAGGERED TILE
- (MO-7) TILE 2 - LARGE CONCRETE LOOK TILE
- (MO-8) WOOD TRELLIS
- (MO-9) OVERSIZE SUPER GRAPHICS  
PROVIDED IN SIGN PROGRAM
- (MO-10) DECORATIVE SCREEN GATE WOOD SLATS  
WS-5
- (MO-11) NATURAL CONCRETE BASE
- (MO-12) METAL STORAGE CONTAINER

**DRA**  
ARCHITECTS

32 Executive, Suite 100  
Irvine, CA 92614  
T 949.833.3800 - F 949.833.3806

THESE DRAWINGS AND/OR THE ACCOMPANYING SPECIFICATIONS AS INSTRUMENTS OF SERVICE ARE THE EXCLUSIVE PROPERTY OF THE ARCHITECT AND THEIR USE AND PUBLICATION SHALL BE RESTRICTED TO THE ORIGINAL SITE FOR WHICH THEY WERE PREPARED. REUSE, REPRODUCTION OR PUBLICATION BY ANY METHOD, IN WHOLE OR IN PART, WITHOUT THE WRITTEN PERMISSION FROM THE ARCHITECT, TITLE TO THESE PLANS AND/OR SPECIFICATIONS SHALL REMAIN WITH THE ARCHITECT. WITHOUT PREJUDICE AND VISUAL CONTACT WITH THEM SHALL CONSTITUTE PRIMA FACIE EVIDENCE OF ACCEPTANCE OF THESE RESTRICTIONS.

CONSULTANT:

PROFESSIONAL SEAL:

PROJECT TITLE  
**LBX**  
Long Beach  
Exchange  
South/West Corner of Carson Street  
and Lakewood Blvd  
Long Beach, California

CLIENT NAME  
**BWP**  
BURNHAM | WARD  
1100 Newport Center Drive  
Suite 200  
Newport Beach, California  
949-760-9150

SHEET NAME  
EXTERIOR ELEVATIONS  
LAKEWOOD BUILDING

NO.	DATE	DESCRIPTION
3-2-16		Prelim. Site Plan Review Submittal
6-2-16		1st Site Plan Review Submittal
7-29-16		2nd Site Plan Review Submittal

JOB NO: 15049  
DATE ISSUED: 6-20-16  
DRAWN BY: SPZ, CMH, MAP  
CHECK BY: CMH

SHEET NO:  
**A3.4**

CONSULTANT:

PROFESSIONAL SEAL:

PROJECT TITLE  
**LBX**  
Long Beach Exchange  
South/West Corner of Carson Street  
and Lakewood Blvd  
Long Beach, California

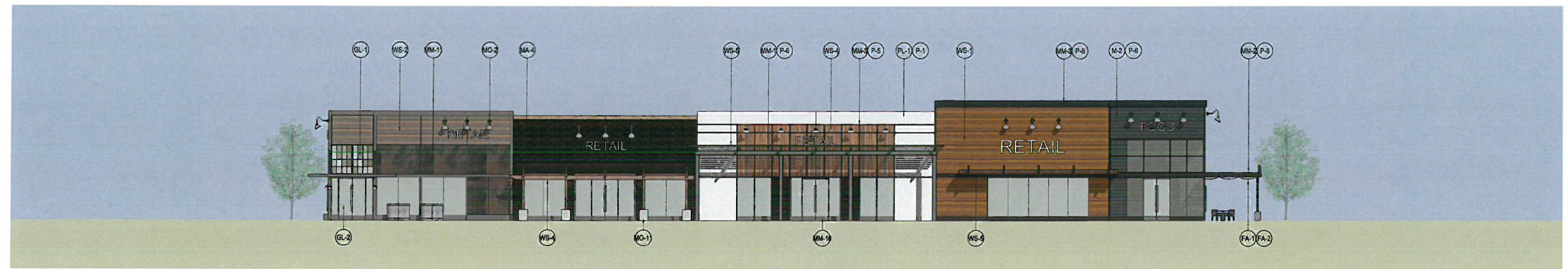
CLIENT NAME  
**BWP**  
BURNHAMWARD  
1100 Newport Center Drive  
Suite 200  
Newport Beach, California  
949-760-9150

SHEET NAME  
EXTERIOR ELEVATIONS  
MCGOWEN BUILDINGS

NO.	DATE	DESCRIPTION
3-2-16		Prelim. Site Plan Review Submittal
6-2-16		1st Site Plan Review Submittal
7-29-16		2nd Site Plan Review Submittal

JOB NO: 15049  
DATE ISSUED: 6-20-16  
DRAWN BY: SPZ, CMH, MAP  
CHECK BY: CMH

SHEET NO:  
**A3.5**



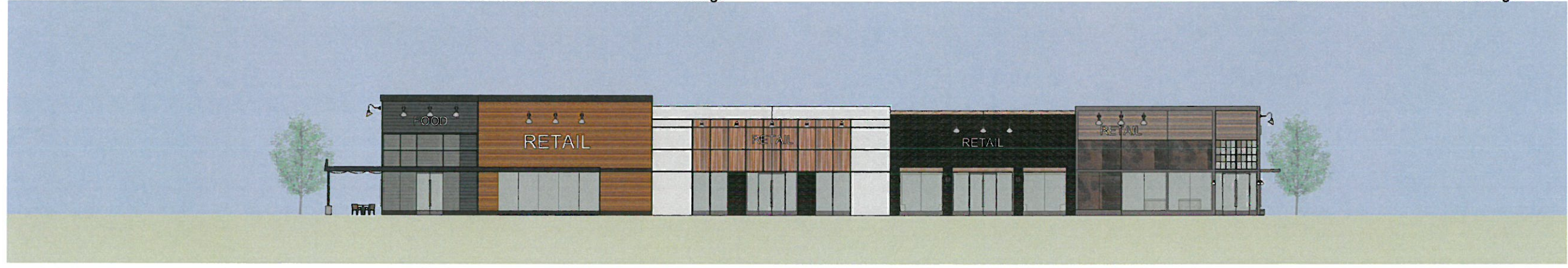
Retail 1  
South Elevation - McGowen Buildings/ McGowen Street



Retail 1  
West Elevation - McGowen Buildings



Retail 1  
East Elevation - McGowen Buildings



Retail 1  
North Elevation - McGowen Buildings

**KEYNOTES**  
SCALE: 1/16"=1'-0"

**METALS:**

- (M-1) METAL CORRUGATED PANELS 6 INCHES SPACING
- (M-2) METAL CORRUGATED PANELS 8 INCHES SPACING
- (M-3) METAL CORRUGATED PANELS 16 INCHES SPACING
- (M-4) METAL CORRUGATED PANELS 24 INCHES SPACING

**MISC. METALS:**

- (MM-1) STEEL COLUMN OR BEAM
- (MM-2) STEEL TUBE (HORIZONTAL)
- (MM-3) METAL TRIM
- (MM-4) METAL AWNING WITH METAL ROD TIE BACKS
- (MM-5) GALVANIZED PERFORATED MESH
- (MM-6) WROUGHT IRON FENCING
- (MM-7) ALUMINUM STORE FRONT SYSTEM CLEAR ANODIZE ALUMINUM
- (MM-8) ALUMINUM STOREFRONT SYSTEM CUSTOM BLUE COLOR
- (MM-9) ALUMINUM STORE FRONT SYSTEM BLACK

**MISC. METALS:**

- (MM-10) ALUMINUM STORE FRONT SYSTEM GRAY
- (MM-11) MOTTLED GRAY METAL PANEL
- (MM-12) MOTTLED DARK GRAY METAL PANEL
- (MM-13) CLEAR ANODIZED METAL
- (MM-14) METAL AWNING WITH CABLE TIE BACKS

**WOODS:**

- (WS-1) WOOD STAIN 1 - ON CLEAR ON IPE OR IPE LOOK WOOD
- (WS-2) WOOD STAIN 2 - WHITE-WASH GRAY
- (WS-3) WOOD STAIN 3 - MULTI COLORED WARM STAIN
- (WS-4) WOOD STAIN 4 - CLEAR STAIN
- (WS-5) WOOD STAIN 5 - WALNUT COLOR
- (WS-6) WOOD STAIN 6

**PLASTER:**

- (PL-1) PLASTER FINISH 1 - SMOOTH
- (PL-2) PLASTER FINSH 2 - STIPPLE

**PAINT BY DUNN EDWARDS PAINT :**

- (P-1) PAINT 1 - DEW386 PRECIOUS PEARLS
- (P-2) PAINT 2 - DET600 DOLPHIN TALES
- (P-3) PAINT 3 - DE6367 COVERED IN PLATINUM
- (P-4) PAINT 4 - DE6368 WALRUS
- (P-5) PAINT 5 - DE6369 LEGENDARY GRAY
- (P-6) PAINT 6 - DE6370 CHARCOAL SMUDGE
- (P-7) PAINT 7 - DE6371 BLACKJACK
- (P-8) PAINT 8 - DE4187 BLACK
- (P-9) PAINT 9 - CUSTOM BLUE
- (P-10) PAINT 10 - DE6213 FINE GRAIN

**MASONRY:**

- (MA-1) MASONRY - CONCRETE PRECISION SMOOTH COLOR LIGHT GRAY
- (MA-2) MASONRY - CONCRETE PRECISION SMOOTH COLOR MEDIUM GRAY
- (MA-3) MASONRY - CONCRETE PRECISION SMOOTH COLOR DARK GRAY
- (MA-4) MASONRY - BLACK SMOKED BRICK
- (MA-5) MASONRY - PAINTED OFF WHITE BRICK

**TILT-UP CONCRETE:**

- (TUC-1) TILT-UP CONCRETE - NATURAL CONCRETE COLOR
- (TUC-2) TILT-UP CONCRETE - PAINTED
- (TUC-3) TILT-UP CONCRETE - VERTICAL CORRUGATED FORMLINER

**GLAZING:**

- (GL-1) GLAZING 1 - MULTI COLOR GLAZING 3-COLORS
- (GL-2) GLAZING 2 - CLEAR GLAZING WITH SLIGHT TINT

**FABRIC:**

- (FA-1) FABRIC AWNING - ORANGE
- (FA-2) FABRIC AWNING - NEUTRAL COLOR, GRAY OR OFF-WHITE

**MISC. OBJECTS:**

- (MO-1) LIGHT FIXTURE - PENDANT
- (MO-2) LIGHT FIXTURE - WALL SCONCE
- (MO-3) GREEN SCREEN
- (MO-4) FRAMED OVERSIZE SUPER GRAPHICS PROVIDED IN SIGN PROGRAM
- (MO-5) DECORATIVE PLANTER POTS / BOXES
- (MO-6) TILE 1 - GRAY STAGGERED TILE
- (MO-7) TILE 2 - LARGE CONCRETE LOOK TILE
- (MO-8) WOOD TRELLIS
- (MO-9) OVERSIZE SUPER GRAPHICS PROVIDED IN SIGN PROGRAM
- (MO-10) DECORATIVE SCREEN GATE WOOD SLATS WS-5
- (MO-11) NATURAL CONCRETE BASE
- (MO-12) METAL STORAGE CONTAINER

CONSULTANT:

PROFESSIONAL SEAL:

PROJECT TITLE  
**LBX**  
Long Beach Exchange  
SouthWest Corner of Carson Street  
and Lakewood Blvd  
Long Beach, California

CLIENT NAME  
**BWP**  
BURNHAM | WARD  
1100 Newport Center Drive  
Suite 200  
Newport Beach, California  
949-760-9150

SHEET NAME  
EXTERIOR ELEVATIONS  
MCGOWEN BUILDINGS

NO.	DATE	DESCRIPTION
3-2-16		Prelim. Site Plan Review Submittal
6-2-16		1st Site Plan Review Submittal
7-29-16		2nd Site Plan Review Submittal

JOB NO: 15049  
DATE ISSUED: 6-20-16  
DRAWN BY: SPZ, CMH, MAP  
CHECK BY: CMH

SHEET NO:  
**A3.6**



Retail 2  
South Elevation - McGowen Buildings/ McGowen Street



Retail 2  
East Elevation - McGowen Buildings



Retail 2  
West Elevation - McGowen Buildings



Retail 2  
North Elevation - McGowen Buildings

**KEYNOTES**

SCALE: 1/16"=1'-0"  
0 8 16 32 64

**METALS:**

- (M-1) METAL CORRUGATED PANELS 6 INCHES SPACING
- (M-2) METAL CORRUGATED PANELS 8 INCHES SPACING
- (M-3) METAL CORRUGATED PANELS 16 INCHES SPACING
- (M-4) METAL CORRUGATED PANELS 24 INCHES SPACING

**MISC. METALS:**

- (MM-1) STEEL COLUMN OR BEAM
- (MM-2) STEEL TUBE (HORIZONTAL)
- (MM-3) METAL TRIM
- (MM-4) METAL AWNING WITH METAL ROD TIE BACKS
- (MM-5) GALVANIZED PERFORATED MESH
- (MM-6) WROUGHT IRON FENCING
- (MM-7) ALUMINUM STORE FRONT SYSTEM CLEAR ANODIZE ALUMINUM
- (MM-8) ALUMINUM STOREFRONT SYSTEM CUSTOM BLUE COLOR
- (MM-9) ALUMINUM STORE FRONT SYSTEM BLACK

**MISC. METALS:**

- (MM-10) ALUMINUM STORE FRONT SYSTEM GRAY
- (MM-11) MOTTLED GRAY METAL PANEL
- (MM-12) MOTTLED DARK GRAY METAL PANEL
- (MM-13) CLEAR ANODIZED METAL
- (MM-14) METAL AWNING WITH CABLE TIE BACKS

**WOODS:**

- (WS-1) WOOD STAIN 1 - ON CLEAR ON IPE OR IPE LOOK WOOD
- (WS-2) WOOD STAIN 2 - WHITE-WASH GRAY
- (WS-3) WOOD STAIN 3 - MULTI COLORED WARM STAIN
- (WS-4) WOOD STAIN 4 - CLEAR STAIN
- (WS-5) WOOD STAIN 5 - WALNUT COLOR
- (WS-6) WOOD STAIN 6

**PLASTER:**

- (PL-1) PLASTER FINISH 1 - SMOOTH GRAY
- (PL-2) PLASTER FINISH 2 - STIPPLE

**PAINT BY DUNN EDWARDS PAINT:**

- (P-1) PAINT 1 - DEW386 PRECIOUS PEARLS
- (P-2) PAINT 2 - DET600 DOLPHIN TALES
- (P-3) PAINT 3 - DE6367 COVERED IN PLATINUM
- (P-4) PAINT 4 - DE6368 WALRUS
- (P-5) PAINT 5 - DE6369 LEGENDARY GRAY
- (P-6) PAINT 6 - DE6370 CHARCOAL SMUDGE
- (P-7) PAINT 7 - DE6371 BLACKJACK
- (P-8) PAINT 8 - DE4187 BLACK
- (P-9) PAINT 9 - CUSTOM BLUE
- (P-10) PAINT 10 - DE6213 FINE GRAIN

**MASONRY:**

- (MA-1) MASONRY - CONCRETE PRECISION SMOOTH COLOR LIGHT GRAY
- (MA-2) MASONRY - CONCRETE PRECISION SMOOTH COLOR MEDIUM GRAY
- (MA-3) MASONRY - CONCRETE PRECISION SMOOTH COLOR DARK GRAY
- (MA-4) MASONRY - BLACK SMOKED BRICK
- (MA-5) MASONRY - PAINTED OFF WHITE BRICK

**TILT-UP CONCRETE:**

- (TUC-1) TILT-UP CONCRETE - NATURAL CONCRETE COLOR
- (TUC-2) TILT-UP CONCRETE - PAINTED
- (TUC-3) TILT-UP CONCRETE - VERTICAL CORRUGATED FORMLINER

**GLAZING:**

- (GL-1) GLAZING 1 - MULTI COLOR GLAZING 3-COLORS
- (GL-2) GLAZING 2 - CLEAR GLAZING WITH SLIGHT TINT

**FABRIC:**

- (FA-1) FABRIC AWNING - ORANGE
- (FA-2) FABRIC AWNING - NEUTRAL COLOR, GRAY OR OFF-WHITE

**MISC. OBJECTS:**

- (MO-1) LIGHT FIXTURE - PENDANT
- (MO-2) LIGHT FIXTURE - WALL SCONCE
- (MO-3) GREEN SCREEN
- (MO-4) FRAMED OVERSIZE SUPER GRAPHICS PROVIDED IN SIGN PROGRAM
- (MO-5) DECORATIVE PLANTER POTS / BOXES
- (MO-6) TILE 1 - GRAY STAGGERED TILE
- (MO-7) TILE 2 - LARGE CONCRETE LOOK TILE
- (MO-8) WOOD TRELLIS
- (MO-9) OVERSIZE SUPER GRAPHICS PROVIDED IN SIGN PROGRAM
- (MO-10) DECORATIVE SCREEN GATE WOOD SLATS WS-5
- (MO-11) NATURAL CONCRETE BASE
- (MO-12) METAL STORAGE CONTAINER

CONSULTANT:

PROFESSIONAL SEAL:

PROJECT TITLE  
**LBX**  
Long Beach Exchange  
South/West Corner of Carson Street and Lakewood Blvd  
Long Beach, California

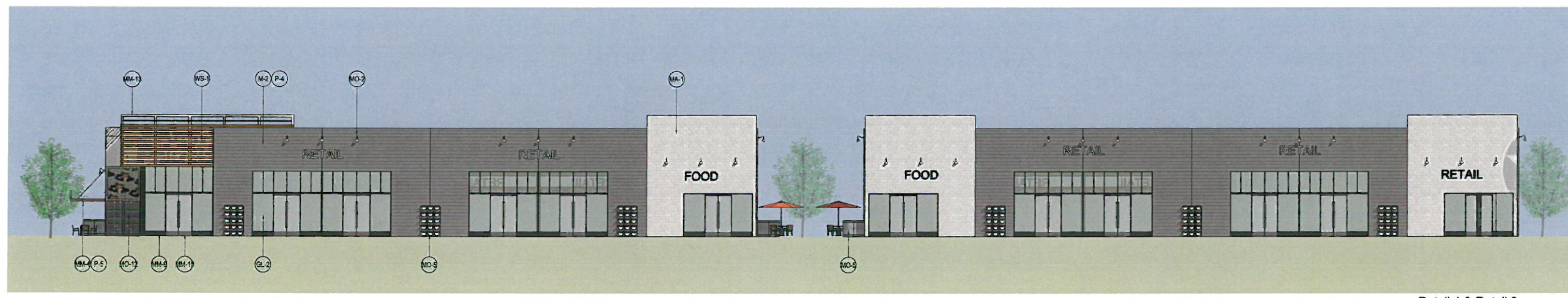
CLIENT NAME  
**BWP**  
BURNHAM | WARD  
1100 Newport Center Drive  
Suite 200  
Newport Beach, California  
949-760-9150

SHEET NAME  
EXTERIOR ELEVATIONS  
WORSHAM BUILDINGS

NO.	DATE:	DESCRIPTION:
3-2-16		Prelim. Site Plan Review Submittal
6-2-16		1st Site Plan Review Submittal
7-28-16		2nd Site Plan Review Submittal

JOB NO: 15049  
DATE ISSUED: 6-20-16  
DRAWN BY: SPZ, CMH, MAP  
CHECK BY: CMH

SHEET NO:  
**A3.7**



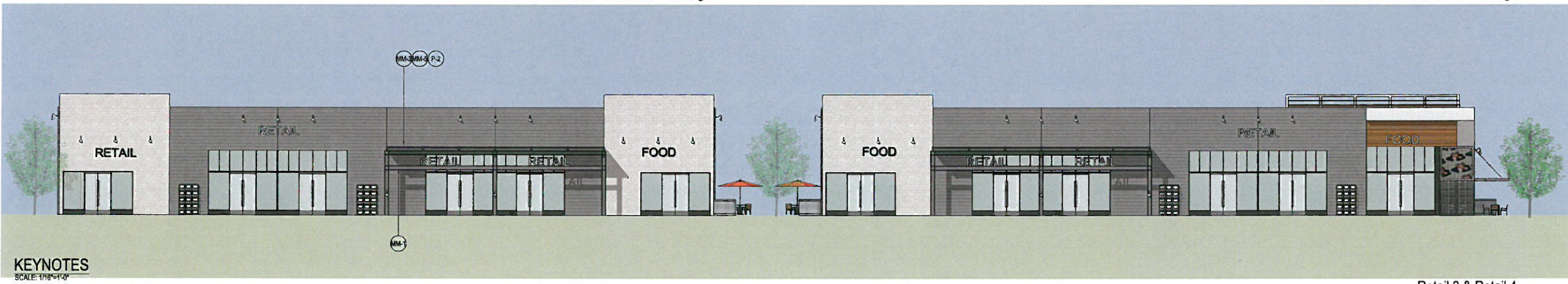
Retail 4 & Retail 3  
West Elevation - Worsham Buildings/ Worsham Avenue



Retail 4 & Retail 3  
North Elevation - Worsham Buildings



Retail 4 & Retail 3  
South Elevation - Worsham Buildings



Retail 3 & Retail 4  
East Elevation - Worsham Buildings

**KEYNOTES**

SCALE: 1/8"=1'-0"



**METALS:**

- (M-1) METAL CORRUGATED PANELS  
6 INCHES SPACING
- (M-2) METAL CORRUGATED PANELS  
8 INCHES SPACING
- (M-3) METAL CORRUGATED PANELS  
16 INCHES SPACING
- (M-4) METAL CORRUGATED PANELS  
24 INCHES SPACING

**MISC. METALS:**

- (MM-5) STEEL COLUMN OR BEAM
- (MM-6) STEEL TUBE (HORIZONTAL)
- (MM-3) METAL TRIM
- (MM-4) METAL AWNING WITH METAL ROD  
TIE BACKS
- (MM-5) GALVANIZED PERFORATED MESH
- (MM-6) WROUGHT IRON FENCING
- (MM-7) ALUMINUM STORE FRONT SYSTEM  
CLEAR ANODIZE ALUMINUM
- (MM-8) ALUMINUM STOREFRONT SYSTEM  
CUSTOM BLUE COLOR
- (MM-9) ALUMINUM STORE FRONT SYSTEM  
BLACK

**MISC. METALS:**

- (MM-10) ALUMINUM STORE FRONT SYSTEM  
GRAY
- (MM-11) MOTTLED GRAY METAL PANEL
- (MM-12) MOTTLED DARK GRAY METAL PANEL
- (MM-13) CLEAR ANODIZED METAL
- (MM-14) METAL AWNING WITH CABLE  
TIE BACKS

**WOODS:**

- (WS-1) WOOD STAIN 1 - ON CLEAR ON IPE OR IPE  
LOOK WOOD
- (WS-2) WOOD STAIN 2 - WHITE-WASH GRAY
- (WS-3) WOOD STAIN 3 - MULTI COLORED WARM STAIN
- (WS-4) WOOD STAIN 4 - CLEAR STAIN
- (WS-5) WOOD STAIN 5 - WALNUT COLOR
- (WS-6) WOOD STAIN 6

**PLASTER:**

- (PL-1) PLASTER FINISH 1 - SMOOTH
- (PL-2) PLASTER FINSH 2 - STIPPLE

**PAINT** BY DUNN EDWARDS PAINT :

- (P-1) PAINT 1 - DEW386 PRECIOUS PEARLS
- (P-2) PAINT 2 - DET600 DOLPHIN TALES
- (P-3) PAINT 3 - DE6367 COVERED IN PLATINUM
- (P-4) PAINT 4 - DE6368 WALRUS
- (P-5) PAINT 5 - DE6369 LEGENDARY GRAY
- (P-6) PAINT 6 - DE6370 CHARCOAL SMUDGE
- (P-7) PAINT 7 - DE6371 BLACKJACK
- (P-8) PAINT 8 - DEA187 BLACK
- (P-9) PAINT 9 - CUSTOM BLUE
- (P-10) PAINT 10 - DE6213 FINE GRAIN

**MASONRY:**

- (MA-1) MASONRY - CONCRETE PRECISION SMOOTH  
COLOR LIGHT GRAY
- (MA-2) MASONRY - CONCRETE PRECISION SMOOTH  
COLOR MEDIUM GRAY
- (MA-3) MASONRY - CONCRETE PRECISION SMOOTH  
COLOR DARK GRAY
- (MA-4) MASONRY - BLACK SMOKED BRICK
- (MA-5) MASONRY - PAINTED OFF WHITE BRICK

**TILT-UP CONCRETE:**

- (TUC-1) TILT-UP CONCRETE - NATURAL CONCRETE  
COLOR
- (TUC-2) TILT-UP CONCRETE - PAINTED
- (TUC-3) TILT-UP CONCRETE - VERTICAL CORRUGATED  
FORMLINER

**GLAZING:**

- (GL-1) GLAZING 1 - MULTI COLOR GLAZING  
3-COLORS
- (GL-2) GLAZING 2 - CLEAR GLAZING WITH SLIGHT TINT

**FABRIC:**

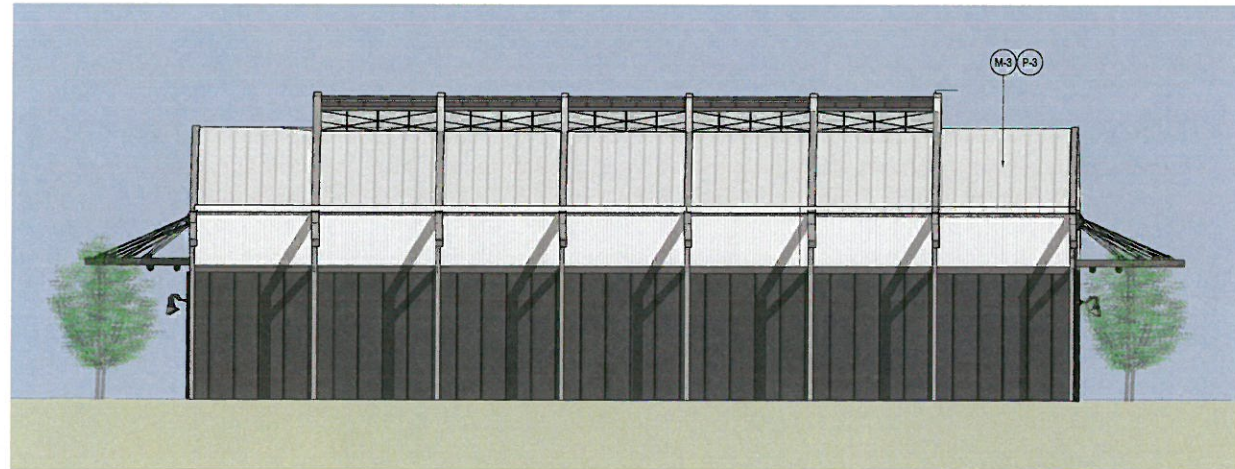
- (FA-1) FABRIC AWNING - ORANGE
- (FA-2) FABRIC AWNING - NEUTRAL COLOR, GRAY  
OR OFF-WHITE

**MISC. OBJECTS:**

- (MO-5) LIGHT FIXTURE - PENDANT
- (MO-2) LIGHT FIXTURE - WALL SCONCE
- (MO-3) GREEN SCREEN
- (MO-4) FRAMED OVERSIZE SUPER GRAPHICS PROVIDED  
IN SIGN PROGRAM
- (MO-5) DECORATIVE PLANTER POTS / BOXES
- (MO-6) TILE 1 - GRAY STAGGERED TILE
- (MO-7) TILE 2 - LARGE CONCRETE LOOK TILE
- (MO-8) WOOD TRELLIS
- (MO-9) OVERSIZE SUPER GRAPHICS  
PROVIDED IN SIGN PROGRAM
- (MO-10) DECORATIVE SCREEN GATE WOOD SLATS  
WS-5
- (MO-11) NATURAL CONCRETE BASE
- (MO-12) METAL STORAGE CONTAINER



Hangar Retail  
North Elevation - Worsham Buildings



Hangar Retail  
East Elevation - Worsham Buildings



Hangar Retail  
West Elevation - Worsham Buildings



Hangar Retail  
South Elevation - Worsham Buildings/ Huggins Street

**KEYNOTES**

SCALE: 1/16"=1'-0"

**METALS:**

- (M-1) METAL CORRUGATED PANELS  
6 INCHES SPACING
- (M-2) METAL CORRUGATED PANELS  
8 INCHES SPACING
- (M-3) METAL CORRUGATED PANELS  
16 INCHES SPACING
- (M-4) METAL CORRUGATED PANELS  
24 INCHES SPACING

**MISC. METALS:**

- (MM-1) STEEL COLUMN OR BEAM  
LOOK WOOD
- (MM-2) STEEL TUBE (HORIZONTAL)
- (MM-3) METAL TRIM
- (MM-4) METAL AWNING WITH METAL ROD  
TIE BACKS
- (MM-5) GALVANIZED PERFORATED MESH
- (MM-6) WROUGHT IRON FENCING
- (MM-7) ALUMINUM STORE FRONT SYSTEM  
CLEAR ANODIZE ALUMINUM
- (MM-8) ALUMINUM STOREFRONT SYSTEM  
CUSTOM BLUE COLOR
- (MM-9) ALUMINUM STORE FRONT SYSTEM  
BLACK

**MISC. METALS:**

- (MM-10) ALUMINUM STORE FRONT SYSTEM  
GRAY
- (MM-11) MOTTLED GRAY METAL PANEL
- (MM-12) MOTTLED DARK GRAY METAL PANEL
- (MM-13) CLEAR ANODIZED METAL
- (MM-14) METAL AWNING WITH CABLE  
TIE BACKS

**WOODS:**

- (WS-1) WOOD STAIN 1 - ON CLEAR ON IPE OR IPE  
LOOK WOOD
- (WS-2) WOOD STAIN 2 - WHITE-WASH GRAY
- (WS-3) WOOD STAIN 3 - MULTI COLORED WARM STAIN
- (WS-4) WOOD STAIN 4 - CLEAR STAIN
- (WS-5) WOOD STAIN 5 - WALNUT COLOR
- (WS-6) WOOD STAIN 6  
WOOD STAIN 6

**PLASTER:**

- (PL-1) PLASTER FINISH 1 - SMOOTH
- (PL-2) PLASTER FINISH 2 - STIPPLE

**PAINT BY DUNN EDWARDS PAINT :**

- (P-1) PAINT 1 - DEW386 PRECIOUS PEARLS  
COLOR LIGHT GRAY
- (P-2) PAINT 2 - DET600 DOLPHIN TALES
- (P-3) PAINT 3 - DE6367 COVERED IN PLATINUM
- (P-4) PAINT 4 - DE6368 WALRUS
- (P-5) PAINT 5 - DE6369 LEGENDARY GRAY
- (P-6) PAINT 6 - DE6370 CHARCOAL SMUDGE
- (P-7) PAINT 7 - DE6371 BLACKJACK
- (P-8) PAINT 8 - DE187 BLACK
- (P-9) PAINT 9 - CUSTOM BLUE
- (P-10) PAINT 10 - DE6213 FINE GRAIN

**MASONRY:**

- (MA-1) MASONRY - CONCRETE PRECISION SMOOTH  
COLOR LIGHT GRAY
- (MA-2) MASONRY - CONCRETE PRECISION SMOOTH  
COLOR MEDIUM GRAY
- (MA-3) MASONRY - CONCRETE PRECISION SMOOTH  
COLOR DARK GRAY
- (MA-4) MASONRY - BLACK SMOKED BRICK
- (MA-5) MASONRY - PAINTED OFF WHITE BRICK

**TILT-UP CONCRETE:**

- (TUC-1) TILT-UP CONCRETE - NATURAL CONCRETE  
COLOR
- (TUC-2) TILT-UP CONCRETE - PAINTED
- (TUC-3) TILT-UP CONCRETE - VERTICAL CORRUGATED  
FORMLINER

**GLAZING:**

- (GL-1) GLAZING 1 - MULTI COLOR GLAZING  
3-COLORS
- (GL-2) GLAZING 2 - CLEAR GLAZING WITH SLIGHT TINT

**FABRIC:**

- (FA-1) FABRIC AWNING - ORANGE
- (FA-2) FABRIC AWNING - NEUTRAL COLOR, GRAY  
OR OFF-WHITE

**MISC. OBJECTS:**

- (MO-1) LIGHT FIXTURE - PENDANT
- (MO-2) LIGHT FIXTURE - WALL SCONCE
- (MO-3) GREEN SCREEN
- (MO-4) FRAMED OVERSIZE SUPER GRAPHICS PROVIDED  
IN SIGN PROGRAM
- (MO-5) DECORATIVE PLANTER POTS / BOXES
- (MO-6) TILE 1 - GRAY STAGGERED TILE
- (MO-7) TILE 2 - LARGE CONCRETE LOOK TILE
- (MO-8) WOOD TRELLIS
- (MO-9) OVERSIZE SUPER GRAPHICS  
PROVIDED IN SIGN PROGRAM
- (MO-10) DECORATIVE SCREEN GATE WOOD SLATS  
WS-5
- (MO-11) NATURAL CONCRETE BASE
- (MO-12) METAL STORAGE CONTAINER

**DRA**  
ARCHITECTS

32 Executive, Suite 100  
Irvine, CA 92614  
T 949.833.3800 - F 949.833.3806

THESE DRAWINGS AND/OR THE ACCOMPANYING SPECIFICATIONS AS INSTRUMENTS OF SERVICE ARE THE EXCLUSIVE PROPERTY OF THE ARCHITECT AND THEIR USE AND PUBLICATION SHALL BE RESTRICTED TO THE ORIGINAL SITE FOR WHICH THEY WERE PREPARED. REPRODUCTION OR PUBLICATION BY ANY METHOD, IN WHOLE OR IN PART IS PROHIBITED EXCEPT BY WRITTEN PERMISSION FROM THE ARCHITECT. TITLE TO THESE PLANS AND/OR SPECIFICATIONS SHALL REMAIN WITH THE ARCHITECT WITHOUT PREJUDICE, AND VISUAL CONTACT WITH THEM SHALL CONSTITUTE FRAUDulent EVIDENCE OF ACCEPTANCE OF THESE RESTRICTIONS.

CONSULTANT:

PROFESSIONAL SEAL:

PROJECT TITLE  
**LBX**  
Long Beach  
Exchange  
SouthWest Corner of Carson Street  
and Lakewood Blvd  
Long Beach, California

CLIENT NAME  
**BWP**  
BURNHAMWARD  
1100 Newport Center Drive  
Suite 200  
Newport Beach, California  
949-760-9150

SHEET NAME  
EXTERIOR ELEVATIONS  
WORSHAM BUILDINGS

NO.	DATE	DESCRIPTION
3-2-16		Prelim. Site Plan Review Submittal
6-2-16		1st Site Plan Review Submittal
7-29-16		2nd Site Plan Review Submittal

JOB NO: 15049  
DATE ISSUED: 6-20-16  
DRAWN BY: SPZ, CMH, MAP  
CHECK BY: CMH

SHEET NO:  
**A3.8**



CONSULTANT:

PROFESSIONAL SEAL:

PROJECT TITLE  
**LBX**  
Long Beach Exchange  
South/West Corner of Carson Street  
and Lakewood Blvd  
Long Beach, California

CLIENT NAME  
**BWP**  
BURNHAMWARD  
1100 Newport Center Drive  
Suite 200  
Newport Beach, California  
949-760-9150

SHEET NAME  
EXTERIOR ELEVATIONS  
PAD D BUILDING

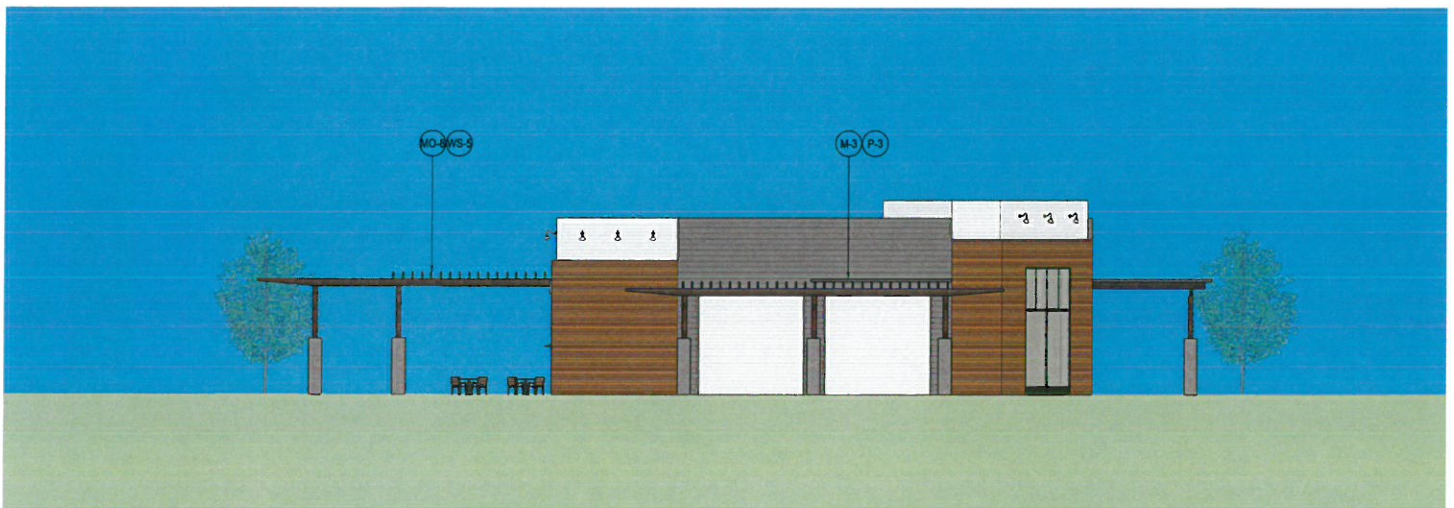
NO.	DATE	DESCRIPTION
3-2-16		Prelim. Site Plan Review Submittal
6-2-16		1st Site Plan Review Submittal
7-29-16		2nd Site Plan Review Submittal

JOB NO: 15049  
DATE ISSUED: 6-20-16  
DRAWN BY: SPZ, CMH, MAP  
CHECK BY: CMH

SHEET NO:  
**A3.9**



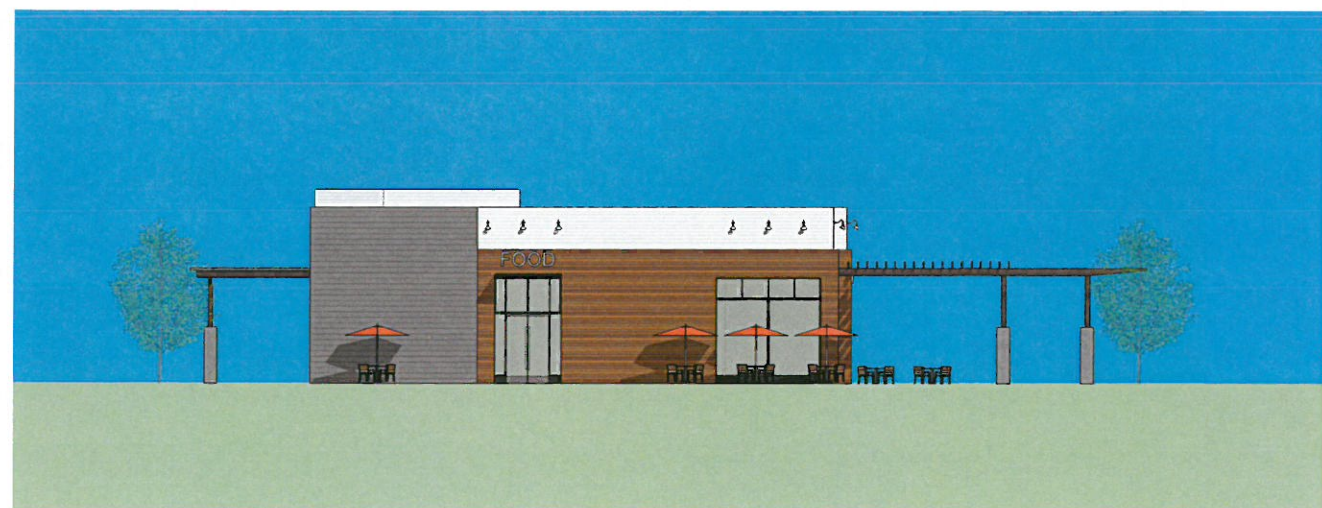
Pad D  
East Elevation



Pad D  
North Elevation - Carson Street



Pad D  
West Elevation/Lakewood Blvd



Pad D  
South Elevation

KEYNOTES  
SCALE: 1/16" = 1'-0"

**METALS:**

- (M-1) METAL CORRUGATED PANELS  
6 INCHES SPACING
- (M-2) METAL CORRUGATED PANELS  
8 INCHES SPACING
- (M-3) METAL CORRUGATED PANELS  
16 INCHES SPACING
- (M-4) METAL CORRUGATED PANELS  
24 INCHES SPACING

**MISC. METALS:**

- (MM-1) STEEL COLUMN OR BEAM
- (MM-2) STEEL TUBE (HORIZONTAL)
- (MM-3) METAL TRIM
- (MM-4) METAL AWNING WITH METAL ROD  
TIE BACKS
- (MM-5) GALVANIZED PERFORATED MESH
- (MM-6) WROUGHT IRON FENCING
- (MM-7) ALUMINUM STORE FRONT SYSTEM  
CLEAR ANODIZE ALUMINUM
- (MM-8) ALUMINUM STOREFRONT SYSTEM  
CUSTOM BLUE COLOR
- (MM-9) ALUMINUM STORE FRONT SYSTEM  
BLACK

**MISC. METALS:**

- (MM-10) ALUMINUM STORE FRONT SYSTEM  
GRAY
- (MM-11) MOTTLED GRAY METAL PANEL
- (MM-12) MOTTLED DARK GRAY METAL PANEL
- (MM-13) CLEAR ANODIZED METAL
- (MM-14) METAL AWNING WITH CABLE  
TIE BACKS

**WOODS:**

- (WS-1) WOOD STAIN 1 - ON CLEAR ON IPE OR IPE  
LOOK WOOD
- (WS-2) WOOD STAIN 2 - WHITE-WASH GRAY
- (WS-3) WOOD STAIN 3 - MULTI COLORED WARM STAIN
- (WS-4) WOOD STAIN 4 - CLEAR STAIN
- (WS-5) WOOD STAIN 5 - WALNUT COLOR
- (WS-6) WOOD STAIN 6  
WOOD STAIN 6

**PLASTER:**

- (PL-1) PLASTER FINISH 1 - SMOOTH
- (PL-2) PLASTER FINSH 2 - STIPPLE

**PAINT BY DUNN EDWARDS PAINT :**

- (P-1) PAINT 1 - DEW386 PRECIOUS PEARLS
- (P-2) PAINT 2 - DET600 DOLPHIN TALES
- (P-3) PAINT 3 - DE6367 COVERED IN PLATINUM
- (P-4) PAINT 4 - DE6368 WALRUS
- (P-5) PAINT 5 - DE6369 LEGENDARY GRAY
- (P-6) PAINT 6 - DE6370 CHARCOAL SMUDGE
- (P-7) PAINT 7 - DE6371 BLACKJACK
- (P-8) PAINT 8 - DE4187 BLACK
- (P-9) PAINT 9 - CUSTOM BLUE
- (P-10) PAINT 10 - DE6213 FINE GRAIN

**MASONRY:**

- (MA-1) MASONRY - CONCRETE PRECISION SMOOTH  
COLOR LIGHT GRAY
- (MA-2) MASONRY - CONCRETE PRECISION SMOOTH  
COLOR MEDIUM GRAY
- (MA-3) MASONRY - CONCRETE PRECISION SMOOTH  
COLOR DARK GRAY
- (MA-4) MASONRY - BLACK SMOKED BRICK
- (MA-5) MASONRY - PAINTED OFF WHITE BRICK

**TILT-UP CONCRETE:**

- (UC-1) TILT-UP CONCRETE - NATURAL CONCRETE  
COLOR
- (UC-2) TILT-UP CONCRETE - PAINTED
- (UC-3) TILT-UP CONCRETE - VERTICAL CORRUGATED  
FORMLINER

**GLAZING:**

- (GL-1) GLAZING 1 - MULTI COLOR GLAZING  
3-COLORS
- (GL-2) GLAZING 2 - CLEAR GLAZING WITH SLIGHT TINT

**FABRIC:**

- (FA-1) FABRIC AWNING - ORANGE
- (FA-2) FABRIC AWNING - NEUTRAL COLOR, GRAY  
OR OFF-WHITE

**MISC. OBJECTS:**

- (MO-1) LIGHT FIXTURE - PENDANT
- (MO-2) LIGHT FIXTURE - WALL SCONCE
- (MO-3) GREEN SCREEN
- (MO-4) FRAMED OVERSIZE SUPER GRAPHICS PROVIDED  
IN SIGN PROGRAM
- (MO-5) DECORATIVE PLANTER POTS / BOXES
- (MO-6) TILE 1 - GRAY STAGGERED TILE
- (MO-7) TILE 2 - LARGE CONCRETE LOOK TILE
- (MO-8) WOOD TRELLIS
- (MO-9) OVERSIZE SUPER GRAPHICS  
PROVIDED IN SIGN PROGRAM
- (MO-10) DECORATIVE SCREEN GATE WOOD SLATS  
WS-5
- (MO-11) NATURAL CONCRETE BASE
- (MO-12) METAL STORAGE CONTAINER

CONSULTANT:

PROFESSIONAL SEAL:

PROJECT TITLE  
**LBX**  
**Long Beach Exchange**  
South/West Corner of Carson Street  
and Lakewood Blvd  
Long Beach, California

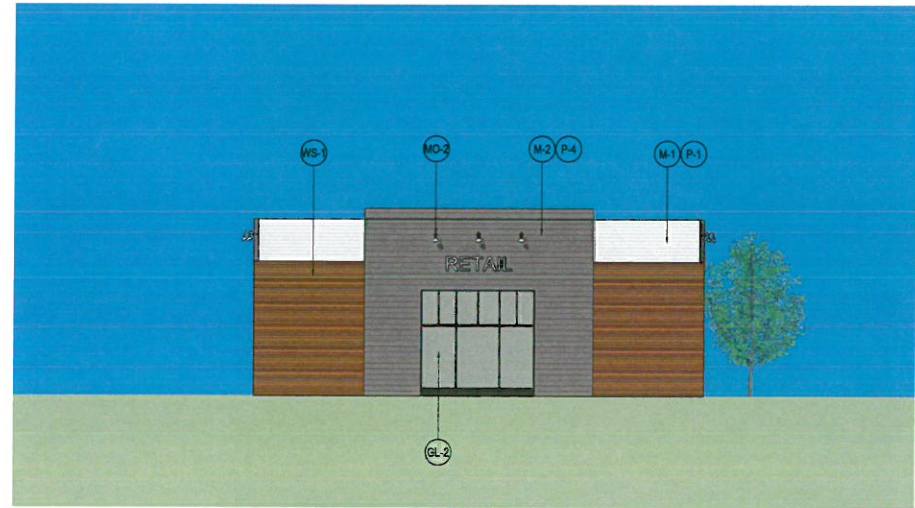
CLIENT NAME  
**BWP**  
BURNHAMWARD  
1100 Newport Center Drive  
Suite 200  
Newport Beach, California  
949-760-9150

SHEET NAME  
EXTERIOR ELEVATIONS  
PAD C BUILDING

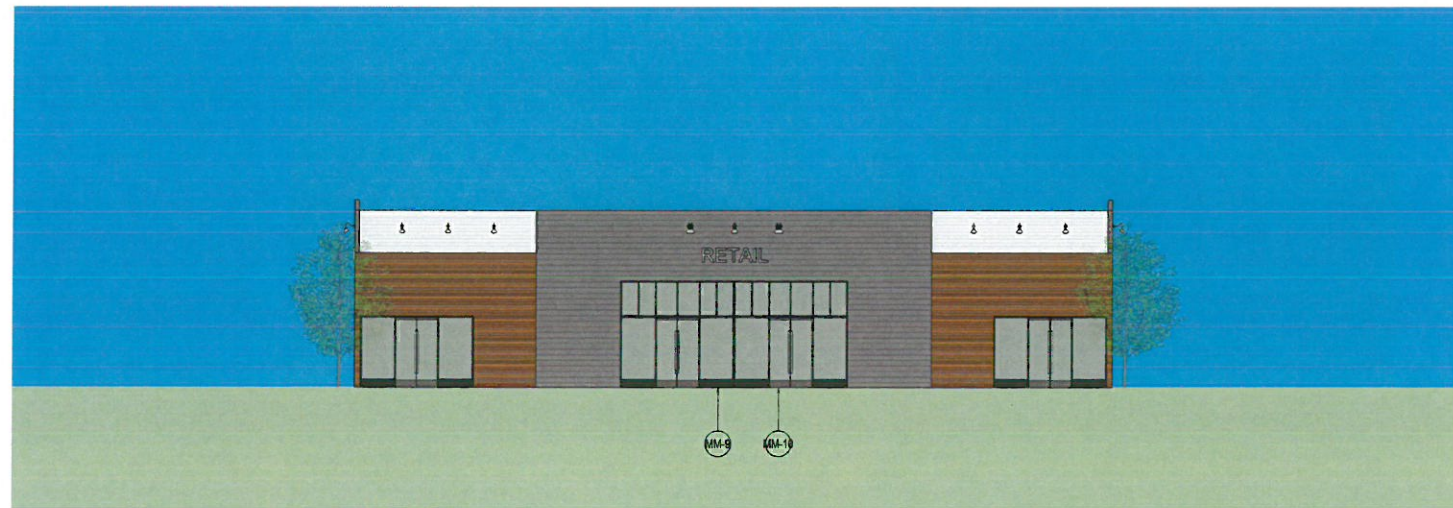
NO.	DATE	DESCRIPTION
3-2-16		Prelim. Site Plan Review Submittal
6-2-16		1st Site Plan Review Submittal
7-29-16		2nd Site Plan Review Submittal

JOB NO: 15049  
DATE ISSUED: 6-20-16  
DRAWN BY: SPZ, CMH, MAP  
CHECK BY: CMH

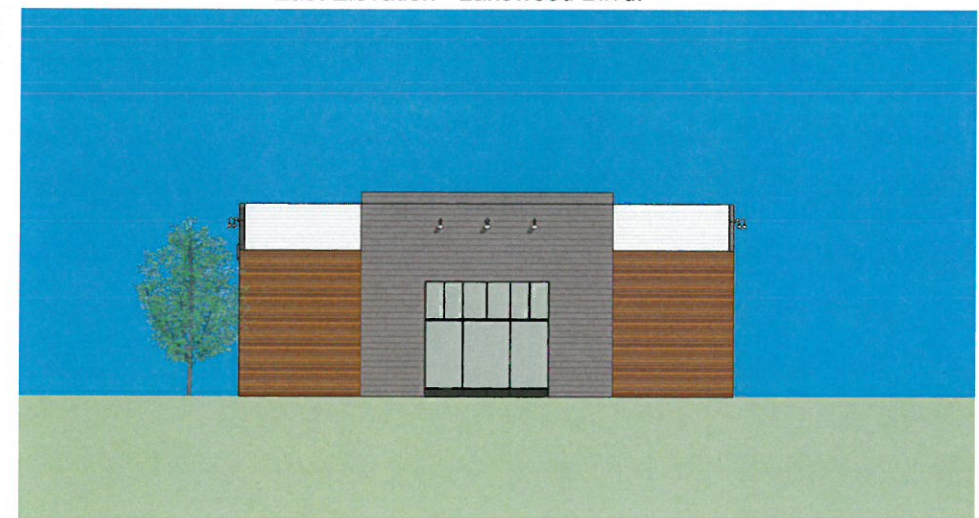
SHEET NO:  
**A3.10**



Pad C  
East Elevation - Lakewood Blvd.



Pad C  
North Elevation



Pad C  
West Elevation



Pad C  
South Elevation - McGowen Street

**KEYNOTES**

SCALE: 1/8"=1'-0"

**METALS:**

- (M-1) METAL CORRUGATED PANELS 6 INCHES SPACING
- (M-2) METAL CORRUGATED PANELS 8 INCHES SPACING
- (M-3) METAL CORRUGATED PANELS 16 INCHES SPACING
- (M-4) METAL CORRUGATED PANELS 24 INCHES SPACING

**MISC. METALS:**

- (MM-1) STEEL COLUMN OR BEAM
- (MM-2) STEEL TUBE (HORIZONTAL)
- (MM-3) METAL TRIM
- (MM-4) METAL AWNING WITH METAL ROD TIE BACKS
- (MM-5) GALVANIZED PERFORATED MESH
- (MM-6) WROUGHT IRON FENCING
- (MM-7) ALUMINUM STORE FRONT SYSTEM CLEAR ANODIZE ALUMINUM
- (MM-8) ALUMINUM STOREFRONT SYSTEM CUSTOM BLUE COLOR
- (MM-9) ALUMINUM STORE FRONT SYSTEM BLACK

**MISC. METALS:**

- (MM-10) ALUMINUM STORE FRONT SYSTEM GRAY
- (MM-11) MOTTLED GRAY METAL PANEL
- (MM-12) MOTTLED DARK GRAY METAL PANEL
- (MM-13) CLEAR ANODIZED METAL
- (MM-14) METAL AWNING WITH CABLE TIE BACKS

**WOODS:**

- (WS-1) WOOD STAIN 1 - ON CLEAR ON IPE OR IPE LOOK WOOD
- (WS-2) WOOD STAIN 2 - WHITE-WASH GRAY
- (WS-3) WOOD STAIN 3 - MULTI COLORED WARM STAIN
- (WS-4) WOOD STAIN 4 - CLEAR STAIN
- (WS-5) WOOD STAIN 5 - WALNUT COLOR
- (WS-6) WOOD STAIN 6

**PLASTER:**

- (PL-1) PLASTER FINISH 1 - SMOOTH
- (PL-2) PLASTER FINISH 2 - STIPPLE

**PAINT BY DUNN EDWARDS PAINT:**

- (P-1) PAINT 1 - DEW386 PRECIOUS PEARLS
- (P-2) PAINT 2 - DET600 DOLPHIN TALES
- (P-3) PAINT 3 - DE6367 COVERED IN PLATINUM
- (P-4) PAINT 4 - DE6368 WALRUS
- (P-5) PAINT 5 - DE6369 LEGENDARY GRAY
- (P-6) PAINT 6 - DE6370 CHARCOAL SMUDGE
- (P-7) PAINT 7 - DE6371 BLACKJACK
- (P-8) PAINT 8 - DEA187 BLACK
- (P-9) PAINT 9 - CUSTOM BLUE
- (P-10) PAINT 10 - DE6213 FINE GRAIN

**MASONRY:**

- (MA-1) MASONRY - CONCRETE PRECISION SMOOTH COLOR LIGHT GRAY
- (MA-2) MASONRY - CONCRETE PRECISION SMOOTH COLOR MEDIUM GRAY
- (MA-3) MASONRY - CONCRETE PRECISION SMOOTH COLOR DARK GRAY
- (MA-4) MASONRY - BLACK SMOKED BRICK
- (MA-5) MASONRY - PAINTED OFF WHITE BRICK

**TILT-UP CONCRETE:**

- (TUC-1) TILT-UP CONCRETE - NATURAL CONCRETE COLOR
- (TUC-2) TILT-UP CONCRETE - PAINTED
- (TUC-3) TILT-UP CONCRETE - VERTICAL CORRUGATED FORMLINER

**GLAZING:**

- (GL-1) GLAZING 1 - MULTI COLOR GLAZING 3-COLORS
- (GL-2) GLAZING 2 - CLEAR GLAZING WITH SLIGHT TINT

**FABRIC:**

- (FA-1) FABRIC AWNING - ORANGE
- (FA-2) FABRIC AWNING - NEUTRAL COLOR, GRAY OR OFF-WHITE

**MISC. OBJECTS:**

- (MO-1) LIGHT FIXTURE - PENDANT
- (MO-2) LIGHT FIXTURE - WALL SCONCE
- (MO-3) GREEN SCREEN
- (MO-4) FRAMED OVERSIZE SUPER GRAPHICS PROVIDED IN SIGN PROGRAM
- (MO-5) DECORATIVE PLANTER POTS / BOXES
- (MO-6) TILE 1 - GRAY STAGGERED TILE
- (MO-7) TILE 2 - LARGE CONCRETE LOOK TILE
- (MO-8) WOOD TRELLIS
- (MO-9) OVERSIZE SUPER GRAPHICS PROVIDED IN SIGN PROGRAM
- (MO-10) DECORATIVE SCREEN GATE WOOD SLATS WS-5
- (MO-11) NATURAL CONCRETE BASE
- (MO-12) METAL STORAGE CONTAINER

CONSULTANT:

PROFESSIONAL SEAL:

PROJECT TITLE  
**LBX**  
**Long Beach Exchange**  
South/West Corner of Carson Street  
and Lakewood Blvd  
Long Beach, California

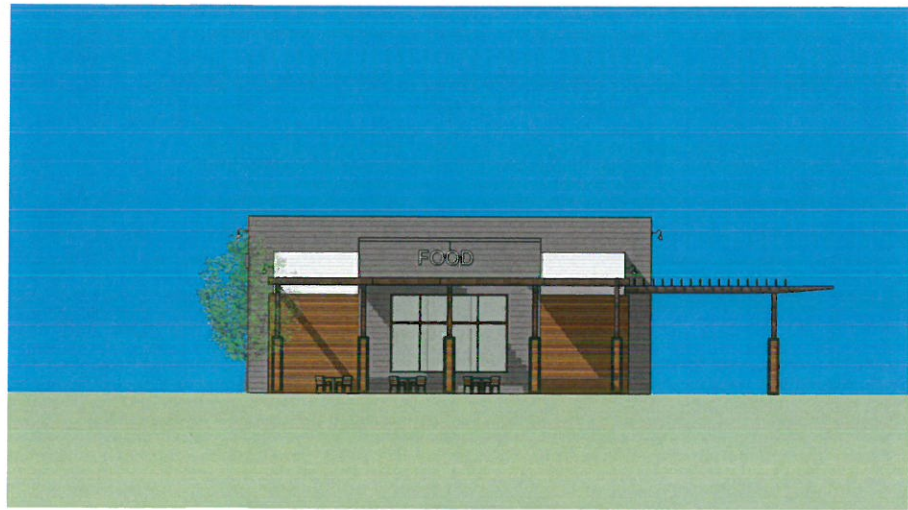
CLIENT NAME  
**BWP**  
BURNHAMWARD  
1100 Newport Center Drive  
Suite 200  
Newport Beach, California  
949-760-9150

SHEET NAME  
EXTERIOR ELEVATIONS  
PAD B BUILDING

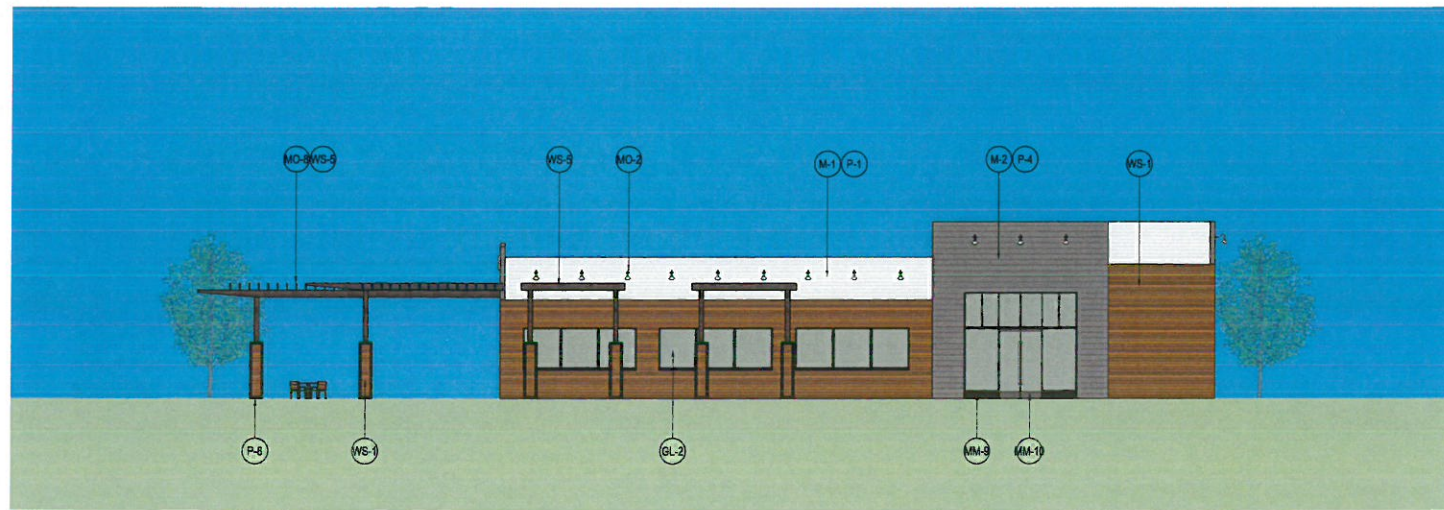
NO.	DATE	DESCRIPTION
3-2-16		Prelim. Site Plan Review Submittal
6-2-16		1st Site Plan Review Submittal
7-29-16		2nd Site Plan Review Submittal

JOB NO: 15049  
DATE ISSUED: 6-20-16  
DRAWN BY: SPZ, CMH, MAP  
CHECK BY: CMH

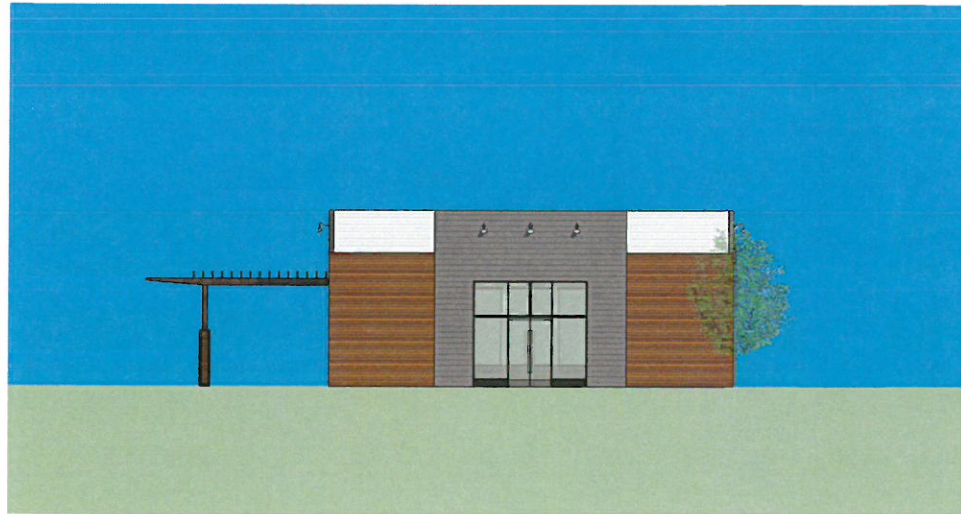
SHEET NO:  
**A3.11**



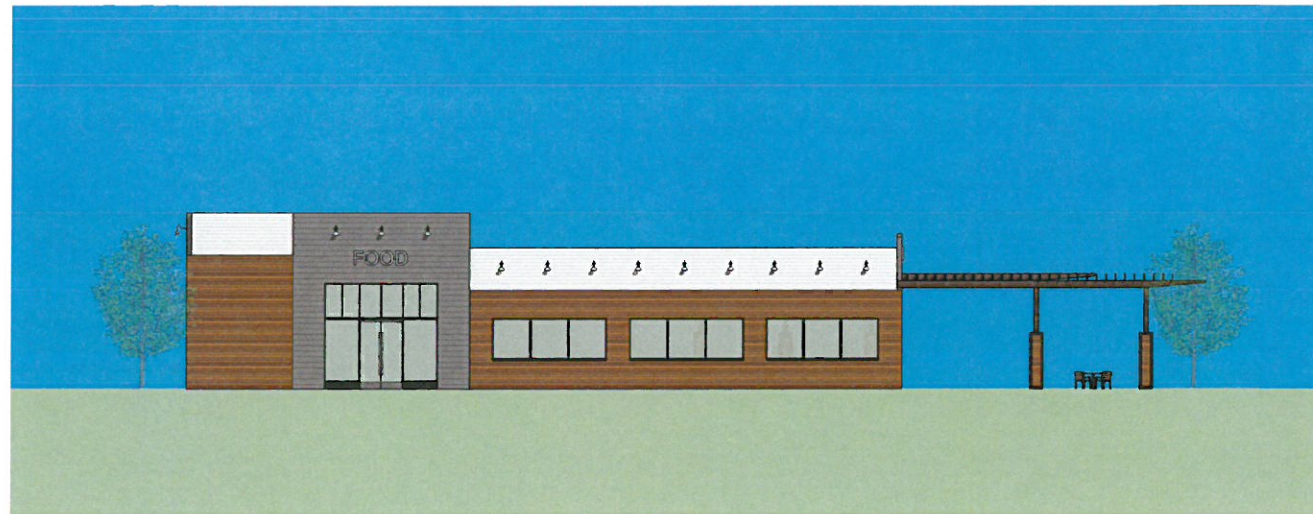
Pad B  
East Elevation - Lakewood Blvd.



Pad B  
North Elevation - McGowen Street



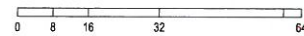
Pad B  
West Elevation



Pad B  
South Elevation

**KEYNOTES**

SCALE: 1/8"=1'-0"



**METALS:**

- (M-1) METAL CORRUGATED PANELS  
6 INCHES SPACING
- (M-2) METAL CORRUGATED PANELS  
8 INCHES SPACING
- (M-3) METAL CORRUGATED PANELS  
16 INCHES SPACING
- (M-4) METAL CORRUGATED PANELS  
24 INCHES SPACING

**MISC. METALS:**

- (MM-1) STEEL COLUMN OR BEAM
- (MM-2) STEEL TUBE (HORIZONTAL)
- (MM-3) METAL TRIM
- (MM-4) METAL AWNING WITH METAL ROD  
TIE BACKS
- (MM-5) GALVANIZED PERFORATED MESH
- (MM-6) WROUGHT IRON FENCING
- (MM-7) ALUMINUM STORE FRONT SYSTEM  
CLEAR ANODIZE ALUMINUM
- (MM-8) ALUMINUM STOREFRONT SYSTEM  
CUSTOM BLUE COLOR
- (MM-9) ALUMINUM STORE FRONT SYSTEM  
BLACK

**MISC. METALS:**

- (MM-10) ALUMINUM STORE FRONT SYSTEM  
GRAY
- (MM-11) MOTTLED GRAY METAL PANEL
- (MM-12) MOTTLED DARK GRAY METAL PANEL
- (MM-13) CLEAR ANODIZED METAL
- (MM-14) METAL AWNING WITH CABLE  
TIE BACKS

**WOODS:**

- (WS-1) WOOD STAIN 1 - ON CLEAR ON IPE OR IPE  
LOOK WOOD
- (WS-2) WOOD STAIN 2 - WHITE-WASH GRAY
- (WS-3) WOOD STAIN 3 - MULTI COLORED WARM STAIN
- (WS-4) WOOD STAIN 4 - CLEAR STAIN
- (WS-5) WOOD STAIN 5 - WALNUT COLOR
- (WS-6) WOOD STAIN 6  
WOOD STAIN 6

**PLASTER:**

- (PL-1) PLASTER FINISH 1 - SMOOTH
- (PL-2) PLASTER FINISH 2 - STIPPLE

**PAINT BY DUNN EDWARDS PAINT :**

- (P-1) PAINT 1 - DEW386 PRECIOUS PEARLS
- (P-2) PAINT 2 - DET600 DOLPHIN TALES
- (P-3) PAINT 3 - DE6367 COVERED IN PLATINUM
- (P-4) PAINT 4 - DE6368 WALRUS
- (P-5) PAINT 5 - DE6369 LEGENDARY GRAY
- (P-6) PAINT 6 - DE6370 CHARCOAL SMUDGE
- (P-7) PAINT 7 - DE6371 BLACKJACK
- (P-8) PAINT 8 - DEA187 BLACK
- (P-9) PAINT 9 - CUSTOM BLUE
- (P-10) PAINT 10 - DE6213 FINE GRAIN

**MASONRY:**

- (MA-1) MASONRY - CONCRETE PRECISION SMOOTH  
COLOR LIGHT GRAY
- (MA-2) MASONRY - CONCRETE PRECISION SMOOTH  
COLOR MEDIUM GRAY
- (MA-3) MASONRY - CONCRETE PRECISION SMOOTH  
COLOR DARK GRAY
- (MA-4) MASONRY - BLACK SMOKED BRICK
- (MA-5) MASONRY - PAINTED OFF WHITE BRICK

**TILT-UP CONCRETE:**

- (UC-1) TILT-UP CONCRETE - NATURAL CONCRETE  
COLOR
- (UC-2) TILT-UP CONCRETE - PAINTED
- (UC-3) TILT-UP CONCRETE - VERTICAL CORRUGATED  
FORMLINER

**GLAZING:**

- (GL-1) GLAZING 1 - MULTI COLOR GLAZING  
3-COLORS
- (GL-2) GLAZING 2 - CLEAR GLAZING WITH SLIGHT TINT

**FABRIC:**

- (FA-1) FABRIC AWNING - ORANGE
- (FA-2) FABRIC AWNING - NEUTRAL COLOR, GRAY  
OR OFF-WHITE

**MISC. OBJECTS:**

- (MO-1) LIGHT FIXTURE - PENDANT
- (MO-2) LIGHT FIXTURE - WALL SCONCE
- (MO-3) GREEN SCREEN
- (MO-4) FRAMED OVERSIZE SUPER GRAPHICS PROVIDED  
IN SIGN PROGRAM
- (MO-5) DECORATIVE PLANTER POTS / BOXES
- (MO-6) TILE 1 - GRAY STAGGERED TILE
- (MO-7) TILE 2 - LARGE CONCRETE LOOK TILE
- (MO-8) WOOD TRELLIS
- (MO-9) OVERSIZE SUPER GRAPHICS  
PROVIDED IN SIGN PROGRAM
- (MO-10) DECORATIVE SCREEN GATE WOOD SLATS  
WS-5
- (MO-11) NATURAL CONCRETE BASE
- (MO-12) METAL STORAGE CONTAINER

CONSULTANT:

PROFESSIONAL SEAL:

PROJECT TITLE  
**LBX**  
Long Beach Exchange  
South/West Corner of Carson Street  
and Lakewood Blvd  
Long Beach, California

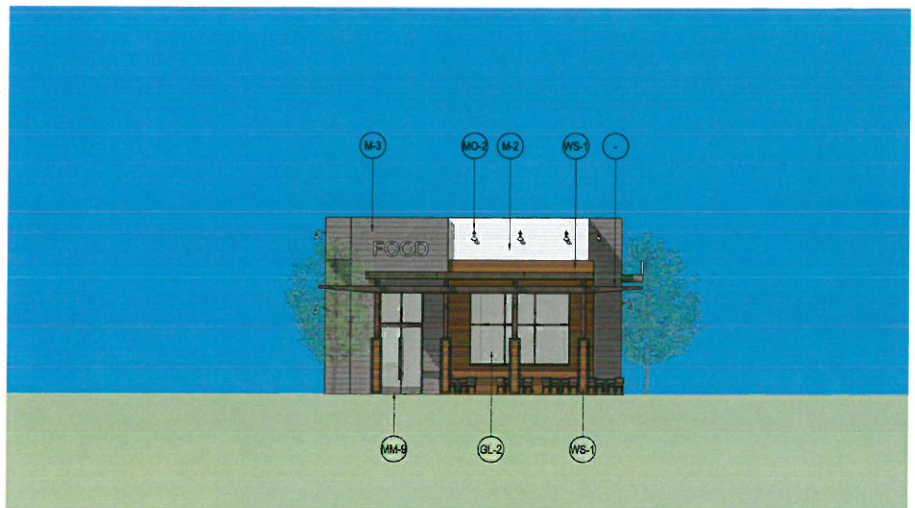
CLIENT NAME  
**BWP**  
BURNHAMWARD  
1100 Newport Center Drive  
Suite 200  
Newport Beach, California  
949-760-9150

SHEET NAME  
EXTERIOR ELEVATIONS  
PAD A BUILDING

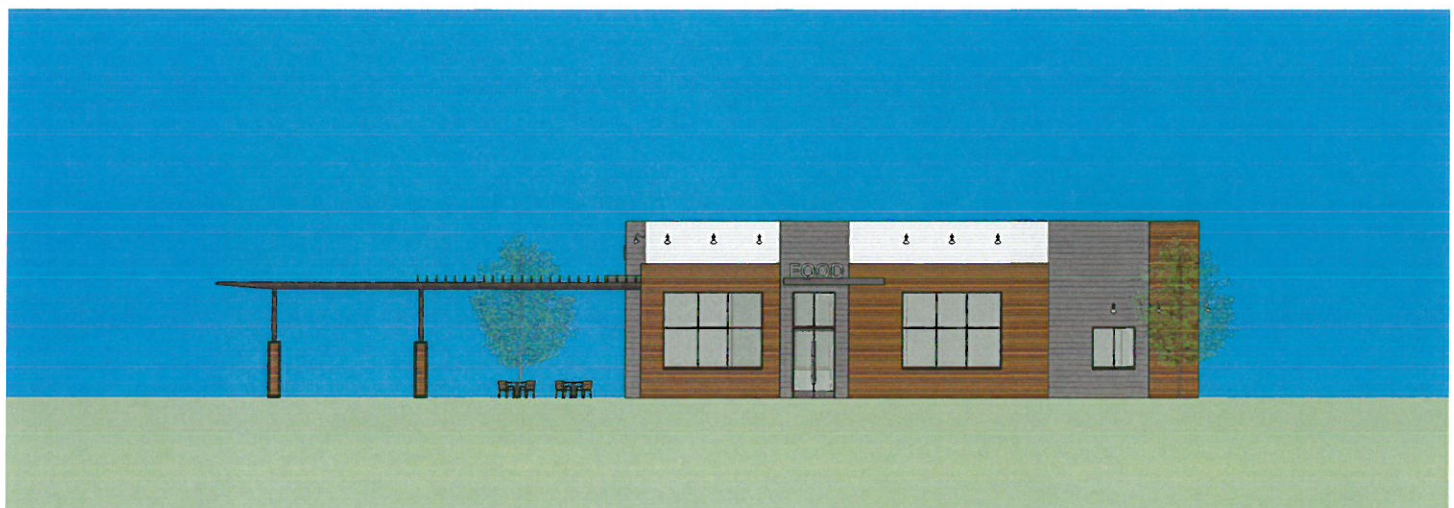
NO.	DATE	DESCRIPTION
3-2-16		Prelim. Site Plan Review Submittal
6-2-16		1st Site Plan Review Submittal
7-29-16		2nd Site Plan Review Submittal

JOB NO: 15049  
DATE ISSUED: 6-20-16  
DRAWN BY: SPZ, CMH, MAP  
CHECK BY: CMH

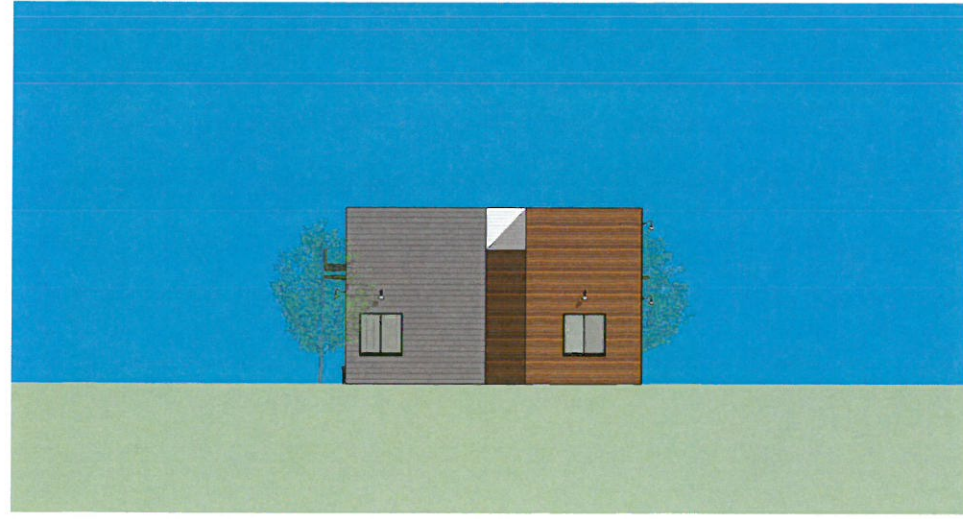
SHEET NO:  
**A3.12**



Pad A  
East Elevation - Lakewood Blvd.



Pad A  
North Elevation



Pad A  
West Elevation



Pad A  
South Elevation - Huggins Street

**KEYNOTES**

SCALE: 1/8"=1'-0"

**METALS:**

- (M-1) METAL CORRUGATED PANELS 6 INCHES SPACING
- (M-2) METAL CORRUGATED PANELS 8 INCHES SPACING
- (M-3) METAL CORRUGATED PANELS 16 INCHES SPACING
- (M-4) METAL CORRUGATED PANELS 24 INCHES SPACING

**MISC. METALS:**

- (MM-1) STEEL COLUMN OR BEAM
- (MM-2) STEEL TUBE (HORIZONTAL)
- (MM-3) METAL TRIM
- (MM-4) METAL AWNING WITH METAL ROD TIE BACKS
- (MM-5) GALVANIZED PERFORATED MESH
- (MM-6) WROUGHT IRON FENCING
- (MM-7) ALUMINUM STORE FRONT SYSTEM CLEAR ANODIZE ALUMINUM
- (MM-8) ALUMINUM STOREFRONT SYSTEM CUSTOM BLUE COLOR
- (MM-9) ALUMINUM STORE FRONT SYSTEM BLACK

**MISC. METALS:**

- (MM-10) ALUMINUM STORE FRONT SYSTEM GRAY
- (MM-11) MOTTLED GRAY METAL PANEL
- (MM-12) MOTTLED DARK GRAY METAL PANEL
- (MM-13) CLEAR ANODIZED METAL
- (MM-14) METAL AWNING WITH CABLE TIE BACKS

**WOODS:**

- (WS-1) WOOD STAIN 1 - ON CLEAR ON IPE OR IPE LOOK WOOD
- (WS-2) WOOD STAIN 2 - WHITE-WASH GRAY
- (WS-3) WOOD STAIN 3 - MULTI COLORED WARM STAIN
- (WS-4) WOOD STAIN 4 - CLEAR STAIN
- (WS-5) WOOD STAIN 5 - WALNUT COLOR
- (WS-6) WOOD STAIN 6

**PLASTER:**

- (PL-1) PLASTER FINISH 1 - SMOOTH
- (PL-2) PLASTER FINISH 2 - STIPPLE

**PAINT BY DUNN EDWARDS PAINT :**

- (P-1) PAINT 1 - DEW386 PRECIOUS PEARLS
- (P-2) PAINT 2 - DET600 DOLPHIN TALES
- (P-3) PAINT 3 - DE6367 COVERED IN PLATINUM
- (P-4) PAINT 4 - DE6368 WALRUS
- (P-5) PAINT 5 - DE6369 LEGENDARY GRAY
- (P-6) PAINT 6 - DE6370 CHARCOAL SMUDGE
- (P-7) PAINT 7 - DE6371 BLACKJACK
- (P-8) PAINT 8 - DEA187 BLACK
- (P-9) PAINT 9 - CUSTOM BLUE
- (P-10) PAINT 10 - DE6213 FINE GRAIN

**MASONRY:**

- (MA-1) MASONRY - CONCRETE PRECISION SMOOTH COLOR LIGHT GRAY
- (MA-2) MASONRY - CONCRETE PRECISION SMOOTH COLOR MEDIUM GRAY
- (MA-3) MASONRY - CONCRETE PRECISION SMOOTH COLOR DARK GRAY
- (MA-4) MASONRY - BLACK SMOKED BRICK
- (MA-5) MASONRY - PAINTED OFF WHITE BRICK

**TILT-UP CONCRETE:**

- (TUC-1) TILT-UP CONCRETE - NATURAL CONCRETE COLOR
- (TUC-2) TILT-UP CONCRETE - PAINTED
- (TUC-3) TILT-UP CONCRETE - VERTICAL CORRUGATED FORMLINER

**GLAZING:**

- (GL-1) GLAZING 1 - MULTI COLOR GLAZING 3-COLORS
- (GL-2) GLAZING 2 - CLEAR GLAZING WITH SLIGHT TINT

**FABRIC:**

- (FA-1) FABRIC AWNING - ORANGE
- (FA-2) FABRIC AWNING - NEUTRAL COLOR, GRAY OR OFF-WHITE

**MISC. OBJECTS:**

- (MO-1) LIGHT FIXTURE - PENDANT
- (MO-2) LIGHT FIXTURE - WALL SCONCE
- (MO-3) GREEN SCREEN
- (MO-4) FRAMED OVERSIZE SUPER GRAPHICS PROVIDED IN SIGN PROGRAM
- (MO-5) DECORATIVE PLANTER POTS / BOXES
- (MO-6) TILE 1 - GRAY STAGGERED TILE
- (MO-7) TILE 2 - LARGE CONCRETE LOOK TILE
- (MO-8) WOOD TRELLIS
- (MO-9) OVERSIZE SUPER GRAPHICS PROVIDED IN SIGN PROGRAM
- (MO-10) DECORATIVE SCREEN GATE WOOD SLATS WS-5
- (MO-11) NATURAL CONCRETE BASE
- (MO-12) METAL STORAGE CONTAINER



Anchor 2 - South Elevation - Looking North-West



Anchor 1 - Detail



Anchor 2 - South Facade - Looking North-East

**DRA**  
ARCHITECTS

32 Executive, Suite 100  
Irvine, CA 92614  
T 949.833.3800 - F 949.833.3806

THESE DRAWINGS UNDER THE ACCOMPANYING SPECIFICATIONS ARE INSTRUMENTS OF SERVICE AND THE EXCLUSIVE PROPERTY OF THE ARCHITECT AND THEIR USE AND PUBLICATION SHALL BE RESTRICTED TO THE ORIGINAL USE UNLESS WRITTEN PERMISSION FROM THE ARCHITECT IS OBTAINED. REPRODUCTION OR PUBLICATION BY ANY METHOD, IN WHOLE OR IN PART IS PROHIBITED EXCEPT BY WRITTEN PERMISSION FROM THE ARCHITECT. TITLE TO THESE PLANS AND ANY SPECIFICATIONS SHALL REMAIN WITH THE ARCHITECT WITHOUT PREJUDICE, AND SHALL CONFLICT WITH THEM SHALL CONSTITUTE FRAUDulent EVIDENCE OF ACCEPTANCE OF THESE RESTRICTIONS.

CONSULTANT:

PROFESSIONAL SEAL:

PROJECT TITLE

**LBX**  
Long Beach  
Exchange

SouthWest Corner of Carson Street  
and Lakewood Blvd  
Long Beach, California

CLIENT NAME

**BWP**  
BURNHAM WARD

1100 Newport Center Drive  
Suite 200  
Newport Beach, California  
949-760-9150

SHEET NAME

RENDERINGS

NO.	DATE	DESCRIPTION
3-2-16		Prelim. Site Plan Review Submittal
6-2-16		1st Site Plan Review Submittal
7-29-16		2nd Site Plan Review Submittal

JOB NO: 15049  
DATE ISSUED: 6-20-16  
DRAWN BY: SPZ, CMH, MAP  
CHECK BY: CMH

SHEET NO:  
**A-4.1**



Anchor 4 - South Facade - Looking North-West



Junior Anchor 2 - South Facade



Anchor 3 - South Facade - Looking North-West

**DRA**  
ARCHITECTS

32 Executive, Suite 100  
Irvine, CA 92614

T 949.833.3800 - F 949.833.3806

THESE DRAWINGS AND/OR THE ACCOMPANYING SPECIFICATIONS ARE INSTRUMENTS OF SERVICE AND THE EXCLUSIVE PROPERTY OF THE ARCHITECT AND THEIR USE AND PUBLICATION SHALL BE RESTRICTED TO THE ORIGINAL SITE FOR WHICH THEY WERE PREPARED. NO USE, REPRODUCTION OR PUBLICATION BY ANY METHOD, IN WHOLE OR IN PART, IS PROHIBITED EXCEPT BY WRITTEN PERMISSION FROM THE ARCHITECT. TITLE TO THESE PLANS AND ANY SPECIFICATIONS SHALL REMAIN WITH THE ARCHITECT WITHOUT PREJUDICE, AND ANY CONTACT WITH THEM SHALL CONSTITUTE FRAUDulent EVIDENCE OF ACCEPTANCE OF THESE RESTRICTIONS.

CONSULTANT:

PROFESSIONAL SEAL:

PROJECT TITLE

**LBX**  
Long Beach  
Exchange

SouthWest Corner of Carson Street  
and Lakewood Blvd  
Long Beach, California

CLIENT NAME

**BWP**  
BURNHAM | WARD

1100 Newport Center Drive  
Suite 200  
Newport Beach, California  
949-760-9150

SHEET NAME

RENDERINGS

NO.	DATE	DESCRIPTION
3-2-16		Prelim. Site Plan Review Submittal
5-2-16		1st Site Plan Review Submittal
7-29-16		2nd Site Plan Review Submittal

JOB NO: 15049  
DATE ISSUED: 6-20-16  
DRAWN BY: SPZ, CMH, MAP  
CHECK BY: CMH

SHEET NO:

**A-4.2**

CONSULTANT:

PROFESSIONAL SEAL:

PROJECT TITLE

## LBX Long Beach Exchange

SouthWest Corner of Carson Street and Lakewood Blvd  
Long Beach, California

CLIENT NAME

**BWP**  
BURNHAMWARD

1100 Newport Center Drive  
Suite 200  
Newport Beach, California  
949-760-9150

SHEET NAME

RENDERINGS

NO.	DATE	DESCRIPTION
3-2-16		Prelim. Site Plan Review Submittal
5-2-16		1st Site Plan Review Submittal
7-29-16		2nd Site Plan Review Submittal

JOB NO: 15049  
DATE ISSUED: 6-20-16  
DRAWN BY: SPZ, CMH, MAP  
CHECK BY: CMH

SHEET NO:  
**A-4.3**



Anchor 4 - East Facade Facing Lakewood - Looking South-West



Anchor 4 - North- East Facade - Looking North-West



Anchor 4 - North Facade Facing Carson - Looking South-West



Anchors 1 & 2 - North Facade Facing Carson- Looking South



Anchor 6 - East Facade Facing Lakewood - Looking North-West



Anchor 6 - South Facade Facing Huggins- Looking North-West



Anchor 5 & 6 & Junior Anchor 1 - East Facade - View from Lakewood Blvd.

**DRA**  
ARCHITECTS

32 Executive, Suite 100  
Irvine, CA 92614

T 949 833.3800 - F 949 833.3806

THESE DRAWINGS AND/OR THE ACCOMPANYING SPECIFICATIONS ARE INSTRUMENTS OF SERVICE AND THE EXCLUSIVE PROPERTY OF THE ARCHITECT AND THEIR USE AND REPRODUCTION SHALL BE RESTRICTED TO THE ORIGINAL CLIENT FOR THE PROJECT HEREIN. ANY REPRODUCTION OR PUBLICATION BY ANY METHOD, IN WHOLE OR IN PART, WITHOUT THE WRITTEN PERMISSION FROM THE ARCHITECT, IS PROHIBITED EXCEPT BY SPECIFIC PERMISSION FROM THE ARCHITECT. TITLE TO THESE PLANS AND/OR SPECIFICATIONS SHALL REMAIN WITH THE ARCHITECT WITHOUT PREJUDICE, AND VISUAL CONTACT WITH THEM SHALL CONSTITUTE FRAUDULENT EVIDENCE OF ACCEPTANCE OF THESE RESTRICTIONS.

CONSULTANT:

PROFESSIONAL SEAL:

PROJECT TITLE

**LBX**  
Long Beach  
Exchange

South/West Corner of Carson Street  
and Lakewood Blvd  
Long Beach, California

CLIENT NAME

**BWP**

BURNHAMWARD

1100 Newport Center Drive  
Suite 200  
Newport Beach, California  
949-760-9150

SHEET NAME

RENDERINGS

NO.	DATE	DESCRIPTION
3-2-16		Prelim. Site Plan Review Submittal
5-2-16		1st Site Plan Review Submittal
7-29-16		2nd Site Plan Review Submittal

JOB NO: 15049  
DATE ISSUED: 6-20-16  
DRAWN BY: SPZ, CMH, MAP  
CHECK BY: CMH

SHEET NO:

**A-4.4**





Anchor 5 - East Facade - Facing Lakewood Blvd.



Anchor 5 - South Facade - Looking South-West



Junior Anchor 1 - East Facade - View from Lakewood Blvd.

**DRA**  
ARCHITECTS

32 Executive, Suite 100  
Irvine, CA 92614  
T 949.833.3800 - F 949.833.3806

THESE DRAWINGS AND/OR THE ACCOMPANYING SPECIFICATIONS ARE INSTRUMENTS OF SERVICE AND THE EXCLUSIVE PROPERTY OF THE ARCHITECT AND THEIR USE AND PUBLICATION SHALL BE RESTRICTED TO THE ORIGINAL SITE FOR WHICH THEY WERE PREPARED. NO USE, REPRODUCTION OR PUBLICATION BY ANY METHOD, IN WHOLE OR IN PART, IS PROHIBITED EXCEPT BY WRITTEN PERMISSION FROM THE ARCHITECT. TITLE TO THESE PLANS AND ANY SPECIFICATIONS SHALL REMAIN WITH THE ARCHITECT WITHOUT PREJUDICE, AND NO PART THEREOF SHALL CONSTITUTE FINAL EVIDENCE OF ACCEPTANCE OF THESE RESTRICTIONS.

CONSULTANT:

PROFESSIONAL SEAL:

PROJECT TITLE

**LBX**  
Long Beach  
Exchange

SouthWest Corner of Carson Street  
and Lakewood Blvd  
Long Beach, California

CLIENT NAME

**BWP**

BURNHAM WARD

1100 Newport Center Drive  
Suite 200  
Newport Beach, California  
949-760-9150

SHEET NAME

RENDERINGS

NO.	DATE	DESCRIPTION
3-2-16		Prelim. Site Plan Review Submittal
6-2-16		1st Site Plan Review Submittal
7-29-16		2nd Site Plan Review Submittal

JOB NO: 15049  
DATE ISSUED: 6-20-16  
DRAWN BY: SPZ, CMH, MAP  
CHECK BY: CMH

SHEET NO:

**A-4.5**



McGowen Retail 1 - Pedestrian Arcades - Looking East Down McGowen



McGowen Retail - View Looking East Down McGowen



Worsham Retail 3 - North Facade - Looking South-East

**DRA**  
ARCHITECTS

32 Executive, Suite 100  
Irvine, CA 92614

T 949.833.3800 - F 949.833.3806

THESE DRAWINGS AND/OR THE ACCOMPANYING SPECIFICATIONS ARE INSTRUMENTS OF SERVICE AND THE EXCLUSIVE PROPERTY OF THE ARCHITECT AND THEIR USE AND REPRODUCTION SHALL BE RESTRICTED TO THE ORIGINAL CLIENT FOR WHICH THEY WERE PREPARED. NO REPRODUCTION OR PUBLICATION BY ANY MEANS, IN WHOLE OR IN PART, IS PROHIBITED EXCEPT BY WRITTEN PERMISSION FROM THE ARCHITECT. TITLE TO THESE PLANS AND/OR SPECIFICATIONS SHALL REMAIN WITH THE ARCHITECT WITHOUT PREJUDICE, AND VISUAL CONTACT WITH THEM SHALL CONSTITUTE FRAUDulent EVIDENCE OF ACCEPTANCE OF THESE RESTRICTIONS.

CONSULTANT:

PROFESSIONAL SEAL:

PROJECT TITLE

**LBX**  
Long Beach  
Exchange

SouthWest Corner of Carson Street  
and Lakewood Blvd  
Long Beach, California

CLIENT NAME

**BWP**

BURNHAM | WARD

1100 Newport Center Drive  
Suite 200  
Newport Beach, California  
949-760-9150

SHEET NAME

RENDERINGS

NO.	DATE	DESCRIPTION
3-2-16		Prelim. Site Plan Review Submittal
6-2-16		1st Site Plan Review Submittal
7-29-16		2nd Site Plan Review Submittal

JOB NO: 15049  
DATE ISSUED: 6-20-16  
DRAWN BY: SPZ, CMH, MAP  
CHECK BY: CMH

SHEET NO:

**A-4.6**



McGowen Retail 1 & 2 - Aerial View Looking North- East Down McGowen



McGowen Retail 1 - South Facade - View Looking North-East



Junior Anchor 1 - North Facade - Looking South-East

**DRA**  
ARCHITECTS

32 Executive, Suite 100  
Irvine, CA 92614

T 949.833.3800 - F 949.833.3806

THESE DRAWINGS AND/OR THE ACCOMPANYING SPECIFICATIONS ARE INSTRUMENTS OF SERVICE AND ARE THE EXCLUSIVE PROPERTY OF THE ARCHITECT AND THEIR USE AND REPRODUCTION SHALL BE RESTRICTED TO THE ORIGINAL SITE FOR WHICH THEY WERE PREPARED. NO USE, REPRODUCTION OR PUBLICATION BY ANY METHOD, IN WHOLE OR IN PART, IS PERMITTED WITHOUT THE WRITTEN PERMISSION OF THE ARCHITECT. TITLE TO THESE PLANS AND/OR SPECIFICATIONS SHALL REMAIN WITH THE ARCHITECT. THEIR PREPARATION AND ISSUANCE SHALL BE WITHOUT LIABILITY TO THE ARCHITECT FOR NEGLIGENCE OR OTHERWISE. ANY REVISIONS SHALL BE INDICATED BY A REVISION SYMBOL AND SHALL BE EVIDENCED BY A REVISION SYMBOL AND SHALL BE EVIDENCED BY A REVISION SYMBOL AND SHALL BE EVIDENCED BY A REVISION SYMBOL.

CONSULTANT:

PROFESSIONAL SEAL:

PROJECT TITLE  
**LBX**  
Long Beach  
Exchange  
SouthWest Corner of Carson Street  
and Lakewood Blvd  
Long Beach, California

CLIENT NAME  
**BWP**  
BURNHAMWARD  
1100 Newport Center Drive  
Suite 200  
Newport Beach, California  
949-760-9150

SHEET NAME  
RENDERINGS

NO.	DATE	DESCRIPTION
3-2-16		Prelim. Site Plan Review Submittal
6-2-16		1st Site Plan Review Submittal
7-29-16		2nd Site Plan Review Submittal

JOB NO: 15049  
DATE ISSUED: 6-20-16  
DRAWN BY: SPZ, CMH, MAP  
CHECK BY: CMH

SHEET NO:  
**A-4.7**



McGowen Retail 1 & 2 - South Facade - Looking North- West



McGowen Retail 1 & 2 - South Facade - View Looking North-West



McGowen Retail 1 & 2 - South Facade - Aerial View Looking North-West

**DRA**  
ARCHITECTS

32 Executive, Suite 100  
Irvine, CA 92614  
T 949.833.3800 - F 949.833.3806

THESE RENDERINGS ARE THE SOLE PROPERTY OF DRA ARCHITECTS AND ARE NOT TO BE REPRODUCED OR TRANSMITTED IN ANY FORM OR BY ANY MEANS, ELECTRONIC OR MECHANICAL, INCLUDING PHOTOCOPYING, RECORDING, OR BY ANY INFORMATION STORAGE AND RETRIEVAL SYSTEM, WITHOUT THE WRITTEN PERMISSION OF DRA ARCHITECTS. THESE RENDERINGS ARE NOT TO BE USED FOR ANY OTHER PROJECTS WITHOUT THE WRITTEN PERMISSION OF DRA ARCHITECTS. DRA ARCHITECTS SHALL BE RESPONSIBLE FOR THE ACCURACY OF THE INFORMATION AND VISUAL CONTENT WITHIN THESE RENDERINGS. PLEASE CONTACT DRA ARCHITECTS FOR ACCEPTANCE OF THESE RESTRICTIONS.

CONSULTANT:

PROFESSIONAL SEAL:

PROJECT TITLE  
**LBX**  
Long Beach  
Exchange  
SouthWest Corner of Carson Street  
and Lakewood Blvd  
Long Beach, California

CLIENT NAME  
**BWP**  
BURNHAM WARD

1100 Newport Center Drive  
Suite 200  
Newport Beach, California  
949-760-9150

SHEET NAME  
RENDERINGS

NO.	DATE	DESCRIPTION
3-2-16		Prelim. Site Plan Review Submittal
6-2-16		1st Site Plan Review Submittal
7-29-16		2nd Site Plan Review Submittal

JOB NO: 15049  
DATE ISSUED: 6-20-16  
DRAWN BY: SPZ, CMH, MAP  
CHECK BY: CMH

SHEET NO:  
**A-4.8**



Worsham Retail 3 - East Facade - Looking South- West



Worsham Retail 3 & 4 - West Facade Facing Worsham - View Looking North-East



Worsham Retail 3 - North Facade - View Looking South

**DRA**  
ARCHITECTS

32 Executive, Suite 100  
Irvine, CA 92614  
T 949.833.3800 - F 949.833.3806

THESE SERVICES UNDER THE ACCOMPANYING SPECIFICATIONS ARE INSTRUMENTS OF SERVICE AND THE EXCLUSIVE PROPERTY OF THE ARCHITECT AND THEIR USE AND PUBLICATION SHALL BE RESTRICTED TO THE ORIGINAL SITE FOR WHICH THEY WERE PREPARED. REUSE, REPRODUCTION OR PUBLICATION BY ANY METHOD, IN WHOLE OR IN PART, WITHOUT THE WRITTEN PERMISSION FROM THE ARCHITECT TITLE TO THESE PLANS AND SPECIFICATIONS SHALL BE HELD BY THE ARCHITECT WITHOUT PREJUDICE, AND VISUAL CONTACT WITH THEM SHALL CONSTITUTE FRAUDulent EVIDENCE OF ACCEPTANCE OF THESE RESTRICTIONS.

CONSULTANT:

PROFESSIONAL SEAL:

PROJECT TITLE

**LBX**  
Long Beach  
Exchange

South/West Corner of Carson Street  
and Lakewood Blvd  
Long Beach, California

CLIENT NAME

**BWP**  
BURNHAMWARD

1100 Newport Center Drive  
Suite 200  
Newport Beach, California  
949-760-9150

SHEET NAME  
RENDERINGS

NO.	DATE	DESCRIPTION
3-2-16		Prelim. Site Plan Review Submittal
6-2-16		1st Site Plan Review Submittal
7-29-16		2nd Site Plan Review Submittal

JOB NO: 15049  
DATE ISSUED: 6-20-16  
DRAWN BY: SPZ, CMH, MAP  
CHECK BY: CMH

SHEET NO:

**A-4.9**



Hangar Building - North Facade - Looking South- West



Hangar Building- West Facade - View Looking South-East



Hangar Building - North Facade - Aerial View Looking South-West

**DRA**  
ARCHITECTS

32 Executive, Suite 100  
Irvine, CA 92614

T 949.833.3800 - F 949.833.3806

THESE DRAWINGS AND/OR THE ACCOMPANYING SPECIFICATIONS AS INSTRUMENTS OF SERVICE ARE THE EXCLUSIVE PROPERTY OF THE ARCHITECT AND THEIR REPRODUCTION SHALL BE RESTRICTED TO THE ORIGINAL SITE FOR WHICH THEY WERE PREPARED. RE-USE, REPRODUCTION OR PUBLICATION BY ANY METHOD, IN WHOLE OR IN PART, WITHOUT THE WRITTEN PERMISSION FROM THE ARCHITECT. TITLE TO THESE PLANS AND/OR SPECIFICATIONS SHALL REMAIN WITH THE ARCHITECT. WITHOUT PREJUDICE, AND VISUAL CONTACT WITH THEM SHALL CONSTITUTE PRIMA FACIE EVIDENCE OF ACCEPTANCE OF THESE RESTRICTIONS.

CONSULTANT:

PROFESSIONAL SEAL:

PROJECT TITLE

**LBX**  
Long Beach  
Exchange

SouthWest Corner of Carson Street  
and Lakewood Blvd  
Long Beach, California

CLIENT NAME

**BWP**

BURNHAM | WARD

1100 Newport Center Drive  
Suite 200  
Newport Beach, California  
949-760-9150

SHEET NAME

RENDERINGS

NO.	DATE	DESCRIPTION
3-2-16		Prelim. Site Plan Review Submittal
6-2-16		1st Site Plan Review Submittal
7-29-16		2nd Site Plan Review Submittal

JOB NO: 15049  
DATE ISSUED: 6-20-16  
DRAWN BY: SPZ, CMH, MAP  
CHECK BY: CMH

SHEET NO:

**A-4.10**

CONSULTANT:

PROFESSIONAL SEAL:

PROJECT TITLE  
**LBX**  
Long Beach Exchange  
South/West Corner of Carson Street and Lakewood Blvd  
Long Beach, California

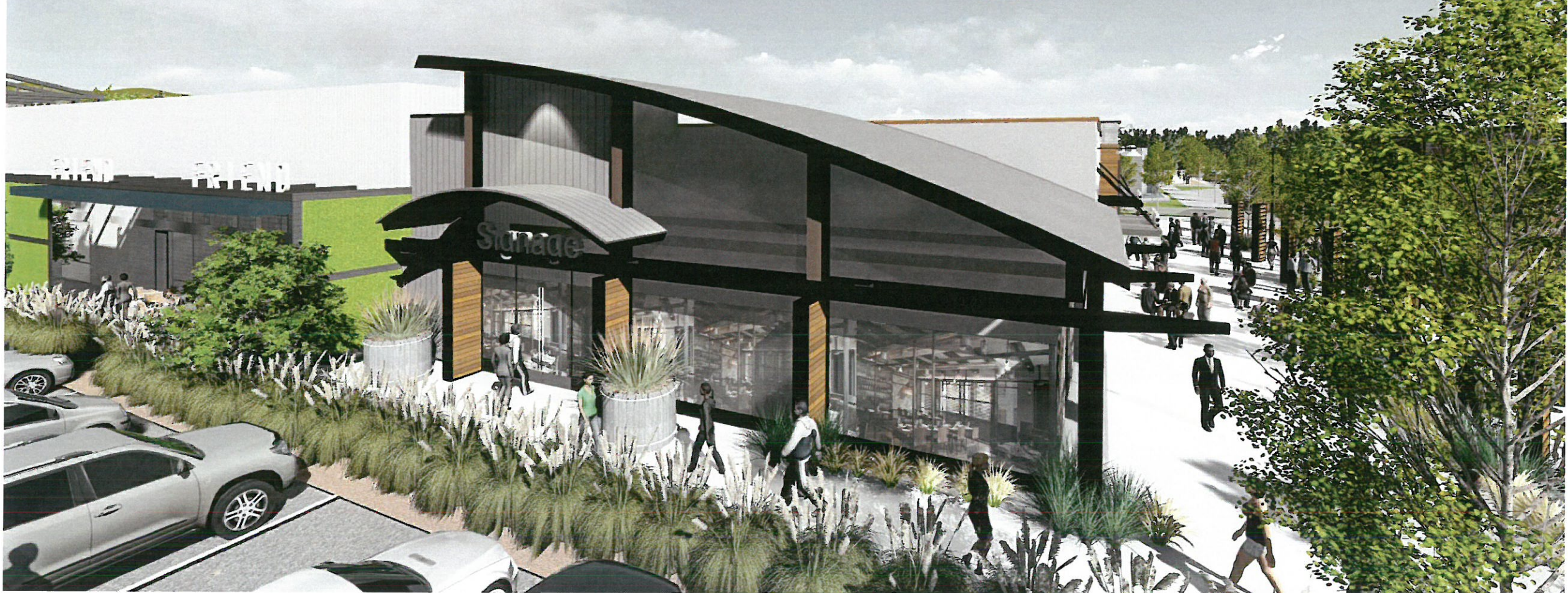
CLIENT NAME  
**BWP**  
BURNHAM | WARD  
1100 Newport Center Drive  
Suite 200  
Newport Beach, California  
949-760-9150

SHEET NAME  
EXTERIOR COLOR MATERIAL BOARD

NO.	DATE	DESCRIPTION
3-2-16		Prelim. Site Plan Review Submittal
6-2-16		1st Site Plan Review Submittal
7-29-16		2nd Site Plan Review Submittal

JOB NO: 15049  
DATE ISSUED: 6-20-16  
DRAWN BY: SPZ, CMH, MAP  
CHECK BY: CMH

SHEET NO:  
**A5.1**



**METALS:**

- (M-1) METAL CORRUGATED PANELS 8 INCHES SPACING
- (M-2) METAL CORRUGATED PANELS 8 INCHES SPACING
- (M-3) METAL CORRUGATED PANELS 16 INCHES SPACING
- (M-4) METAL CORRUGATED PANELS 24 INCHES SPACING

**MISC. METALS:**

- (MM-1) STEEL COLUMN OR BEAM
- (MM-2) STEEL TUBE (HORIZONTAL)
- (MM-3) METAL TRIM
- (MM-4) METAL AWNING WITH METAL ROD TIE BACKS
- (MM-5) GALVANIZED PERFORATED MESH
- (MM-6) WROUGHT IRON FENCING
- (MM-7) ALUMINUM STORE FRONT SYSTEM CLEAR ANODIZE ALUMINUM
- (MM-8) ALUMINUM STOREFRONT SYSTEM CUSTOM BLUE COLOR
- (MM-9) ALUMINUM STORE FRONT SYSTEM BLACK

**MISC. METALS:**

- (MM-1) ALUMINUM STORE FRONT SYSTEM GRAY
- (MM-2) MOTTLED GRAY METAL PANEL
- (MM-3) MOTTLED DARK GRAY METAL PANEL
- (MM-4) CLEAR ANODIZED METAL
- (MM-5) METAL AWNING WITH CABLE TIE BACKS

**WOODS:**

- (WS-1) WOOD STAIN 1 - ON CLEAR ON IPE OR IPE LOOK WOOD
- (WS-2) WOOD STAIN 2 - WHITE WASH GRAY
- (WS-3) WOOD STAIN 3 - MULTI COLORED WARM STAIN
- (WS-4) WOOD STAIN 4 - CLEAR STAIN
- (WS-5) WOOD STAIN 5 - WALNUT COLOR
- (WS-6) WOOD STAIN 6

**PLASTER:**

- (PL-1) PLASTER FINISH 1 - SMOOTH
- (PL-2) PLASTER FINISH 2 - STIPPLE

**PAINT BY DUNN EDWARDS PAINT:**

- (P-1) PAINT 1 - DEW386 PRECIOUS PEARLS
- (P-2) PAINT 2 - DET600 DOLPHIN TALES
- (P-3) PAINT 3 - DE3367 COVERED IN PLATINUM
- (P-4) PAINT 4 - DE3368 WALRUS
- (P-5) PAINT 5 - DE3369 LEGENDARY GRAY
- (P-6) PAINT 6 - DE3370 CHARCOAL SMUDGE
- (P-7) PAINT 7 - DE3371 BLACKJACK
- (P-8) PAINT 8 - DE4187 BLACK
- (P-9) PAINT 9 - CUSTOM BLUE
- (P-10) PAINT 10 - DE5213 FINE GRAIN

**MASONRY:**

- (MA-1) MASONRY - CONCRETE PRECISION SMOOTH COLOR LIGHT GRAY
- (MA-2) MASONRY - CONCRETE PRECISION SMOOTH COLOR MEDIUM GRAY
- (MA-3) MASONRY - CONCRETE PRECISION SMOOTH COLOR DARK GRAY
- (MA-4) MASONRY - BLACK SMOKED BRICK
- (MA-5) MASONRY - PAINTED OFF WHITE BRICK

**TILT-UP CONCRETE:**

- (TUC-1) TILT-UP CONCRETE - NATURAL CONCRETE COLOR
- (TUC-2) TILT-UP CONCRETE - PAINTED
- (TUC-3) TILT-UP CONCRETE - VERTICAL CORRUGATED FORMLINER

**GLAZING:**

- (GL-1) GLAZING 1 - MULTI COLOR GLAZING 3-COLORS
- (GL-2) GLAZING 2 - CLEAR GLAZING WITH SLIGHT TINT

**FABRIC:**

- (FA-1) FABRIC AWNING - ORANGE
- (FA-2) FABRIC AWNING - NEUTRAL COLOR, GRAY OR OFF-WHITE

**MISC. OBJECTS:**

- (MO-1) LIGHT FIXTURE - PENDANT
- (MO-2) LIGHT FIXTURE - WALL SCONCE
- (MO-3) GREEN SCREEN
- (MO-4) FRAMED OVERSIZE SUPER GRAPHICS PROVIDED IN SIGN PROGRAM
- (MO-5) DECORATIVE PLANTER POTS / BOXES
- (MO-6) TILE 1 - GRAY STAGGERED TILE
- (MO-7) TILE 2 - LARGE CONCRETE LOOK TILE
- (MO-8) WOOD TRELLIS
- (MO-9) OVERSIZE SUPER GRAPHICS PROVIDED IN SIGN PROGRAM
- (MO-10) DECORATIVE SCREEN GATE WOOD SLATS WS-5
- (MO-11) NATURAL CONCRETE BASE
- (MO-12) METAL STORAGE CONTAINER