



# HAMILTON LOOP VISION PLAN

LONG BEACH PARKS COMMISSION  
JANUARY 19, 2021

CITY OF  
LONG BEACH

**About the Vision Plan**

**Existing Conditions**

**Community Engagement**

**Vision Plan Concepts**

**Next Steps**



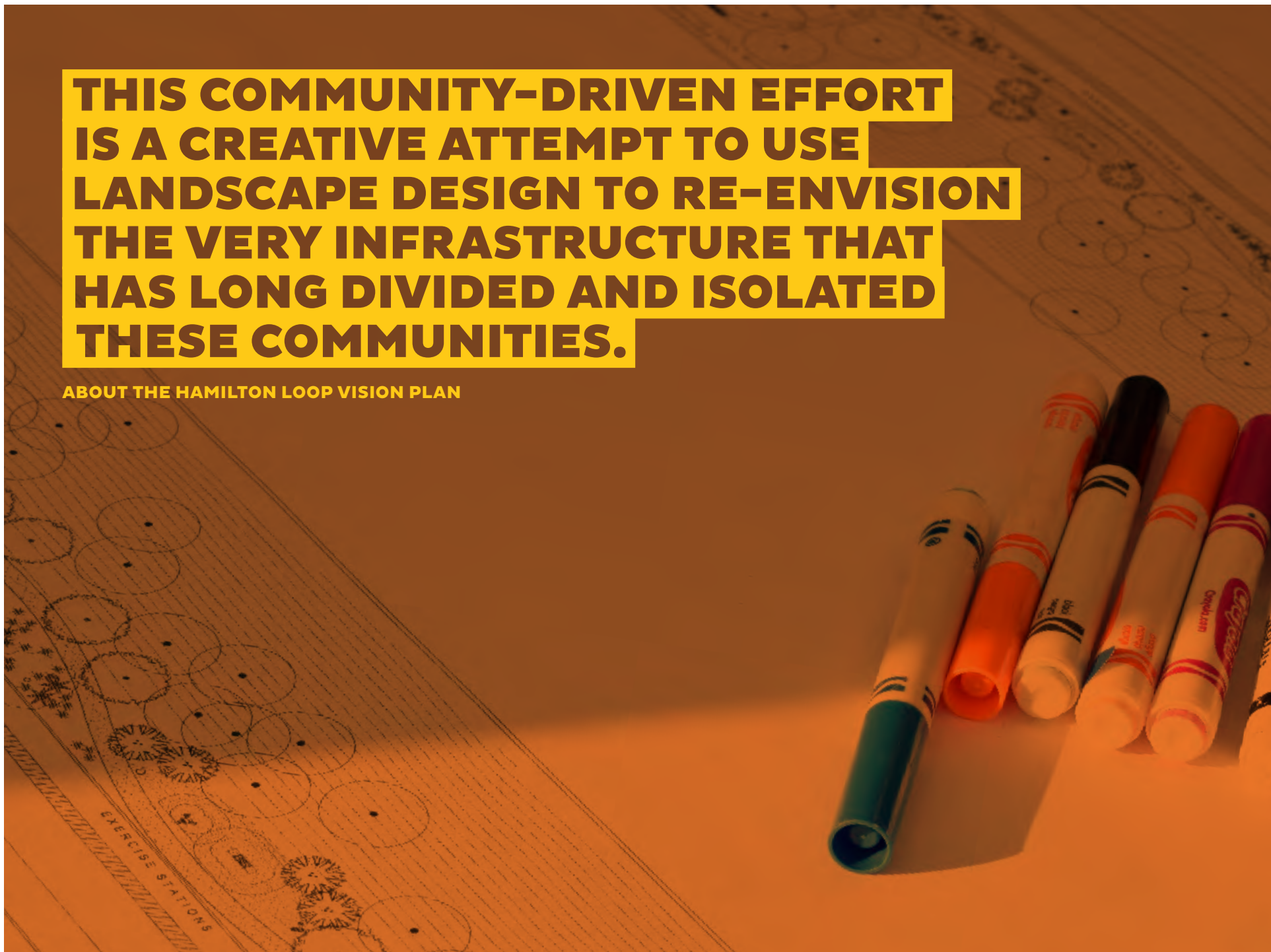


**THE HAMILTON LOOP  
IS A GREENWAY CONNECTOR  
THAT WILL TRANSFORM FREEWAY  
EMBANKMENTS, STREETS, SIDEWALKS,  
UNDERPASSES, AND INTERSECTIONS  
IN THE HAMILTON NEIGHBORHOOD  
OF NORTH LONG BEACH.**

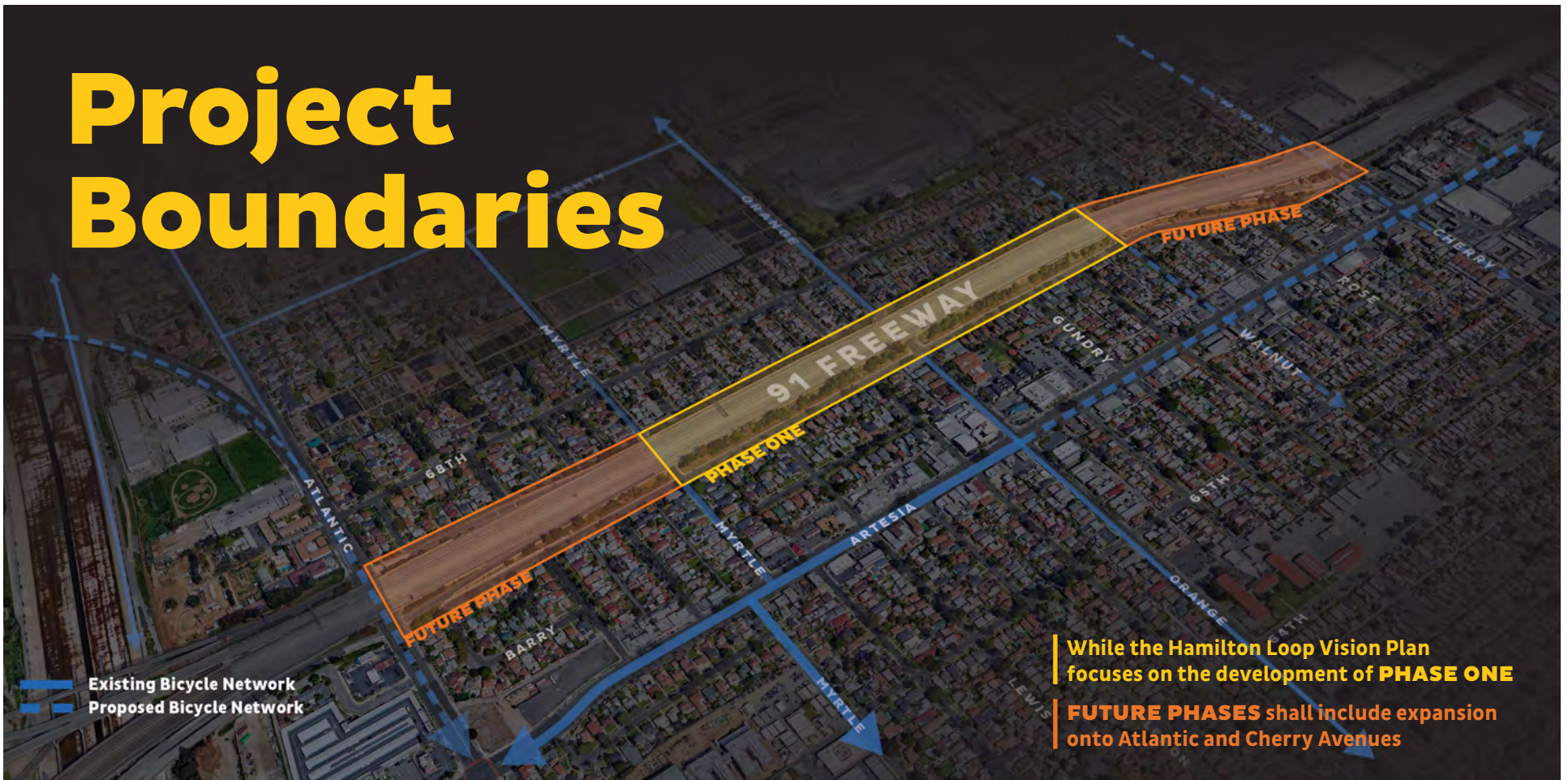
ABOUT THE HAMILTON LOOP VISION PLAN

**THIS COMMUNITY-DRIVEN EFFORT IS A CREATIVE ATTEMPT TO USE LANDSCAPE DESIGN TO RE-ENVISION THE VERY INFRASTRUCTURE THAT HAS LONG DIVIDED AND ISOLATED THESE COMMUNITIES.**

**ABOUT THE HAMILTON LOOP VISION PLAN**



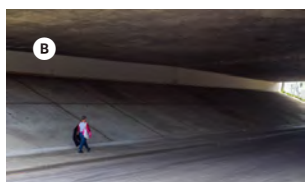
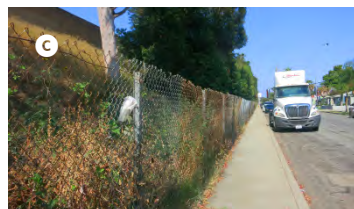
# Project Boundaries



## UPTOWN OPEN SPACE NETWORK

The City of Long Beach Department of Parks, Recreation, and Marine recently completed a planning effort, the Uptown Open Space Vision Plan, studying the potential for new open spaces in North Long Beach. The project that received the greatest amount of community support was the Hamilton Loop, with the intention of promoting healthy activity, social interaction, and pedestrian connectivity.

# Existing Conditions



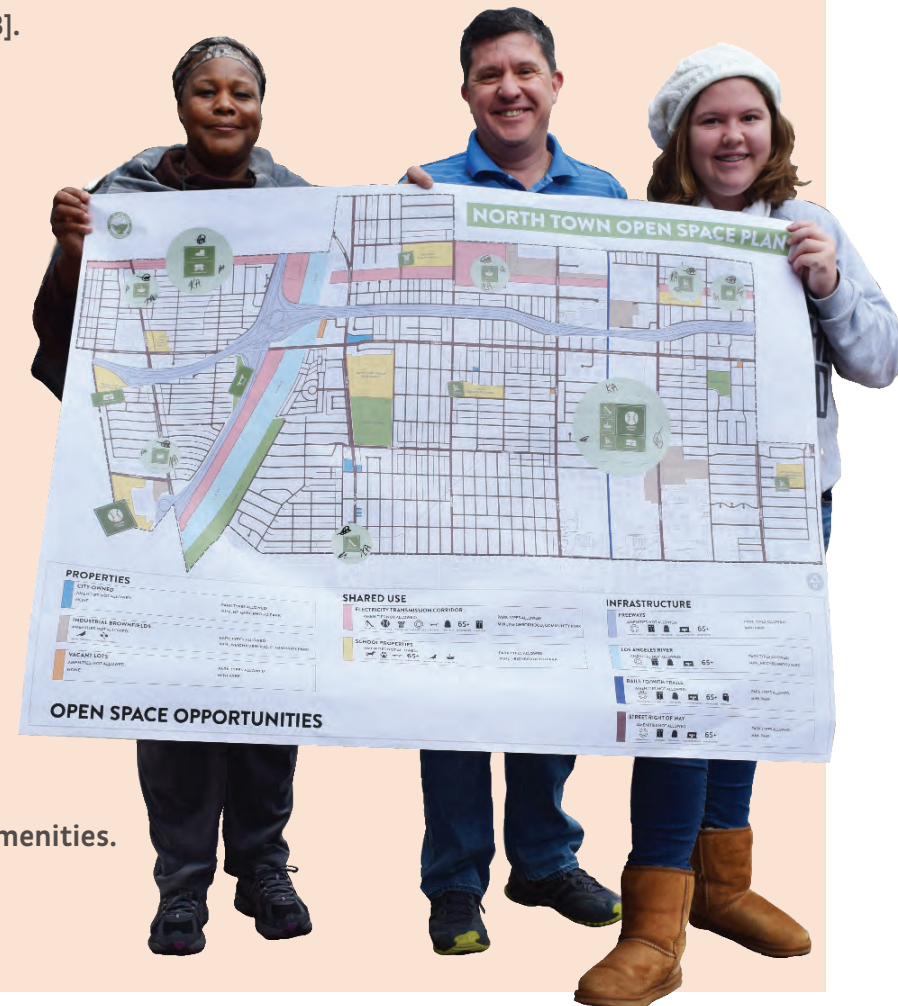
# Opportunities & Constraints

## OPPORTUNITIES

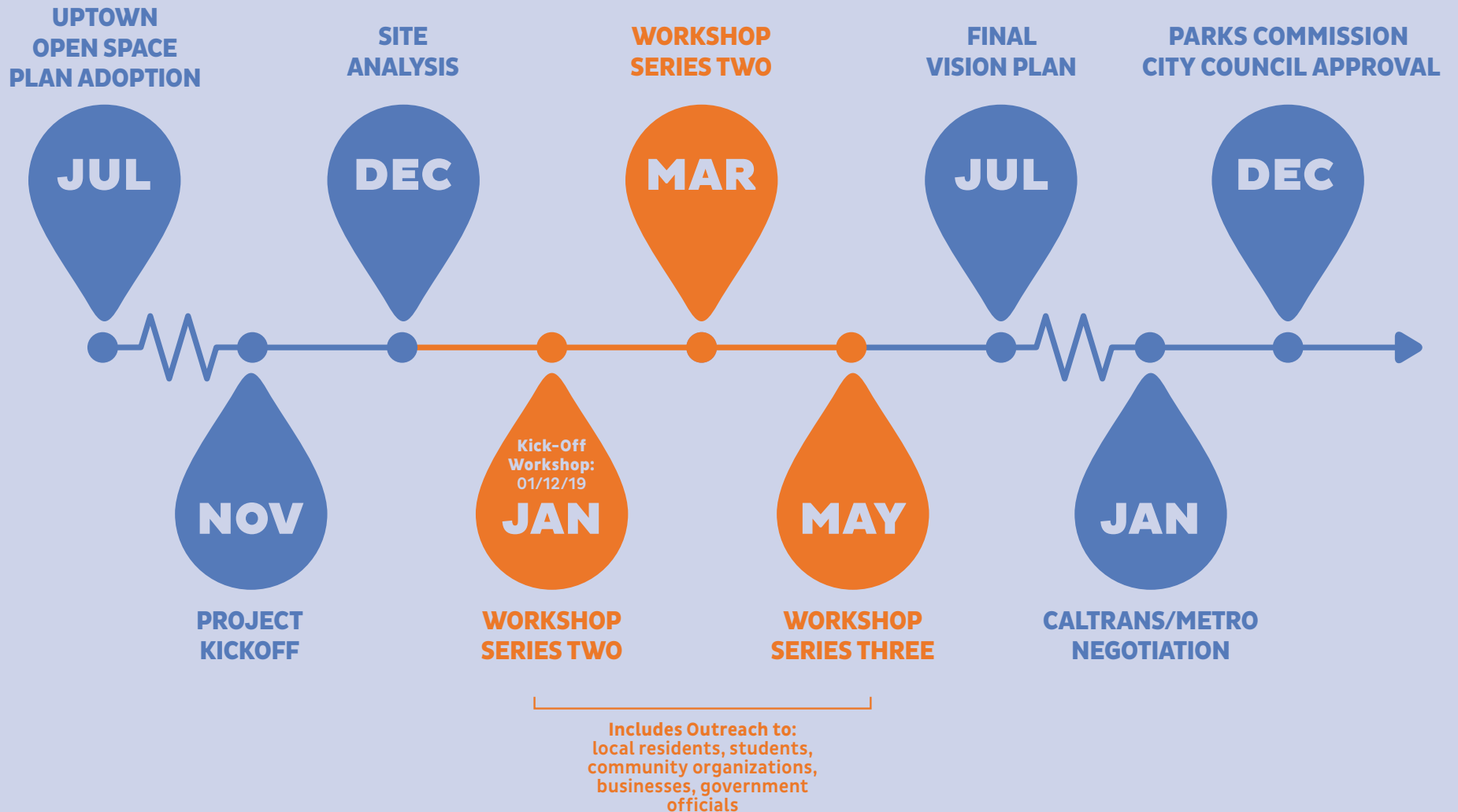
- High levels of **community involvement and support** [top priority project as part of the City Council-approved Uptown Open Space Vision Plan [2018].
- **Capture developable open space** by regrading the freeway embankment and constricting a retaining wall.
- **Expand developable open space** by reconfiguring the roadway and coupling the streets.
- **Calm traffic speeds** of fast-moving vehicles and improve the walkability of the freeway underpasses.
- Expand and connect to the larger **bicycle network**.
- Hamilton Neighborhood Association has a contract with the California Department of Transportation [CalTrans] to **maintain and clean up** the freeway embankment area.

## CONSTRAINTS

- Freeway and embankment land are **owned by the California Department of Transportation** [CalTrans] and will require negotiation and agreement.
- CalTrans is considering an **expansion/widening of the 91 Freeway**.
- Even after regrading the embankment and building retaining walls, **developable space is still limited** and does not allow for larger types of open space amenities.
- **Need more space on 67th Street** to allow for larger types of open space amenities.
- **Limited resources** to dedicate for maintenance and upkeep.



# Timeline





# Existing Conditions Analysis

## ENVIRONMENTAL HEALTH DATA

CalEnviroScreen 3.0  
LA County Public Health

## DEMOGRAPHIC TRENDS

US Census

## PHYSICAL CONDITIONS

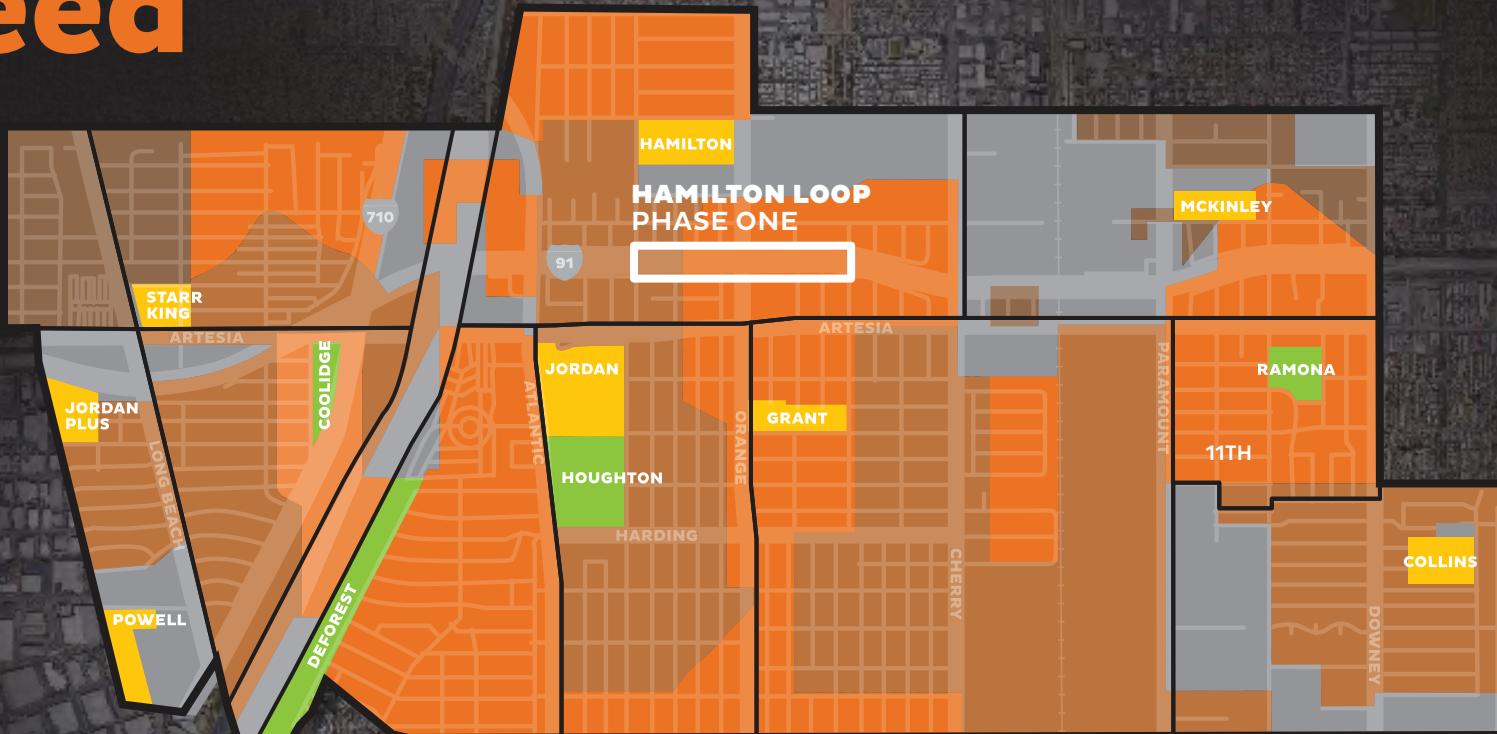
LA County Needs Assessment  
Park Score + Walk Score

## RELEVANT PLANNING EFFORTS

Uptown Open Space Vision Plan  
Open Space Element  
PRM Strategic Plan  
Mobility Element  
Bicycle Master Plan  
CalTrans 91 Freeway Expansion

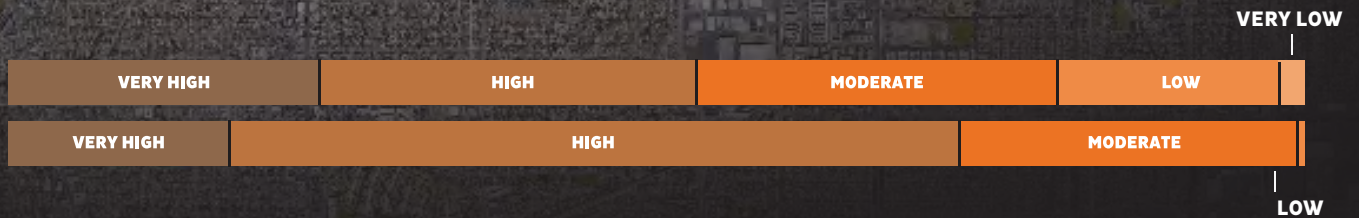


# Park Need



**LOS ANGELES COUNTY**

**NORTH LONG BEACH**



Los Angeles County Parks  
Needs Assessment (2016)



<b>PARK NEED</b>	VERY HIGH	LOW
	HIGH	VERY LOW
	MODERATE	NO DATA

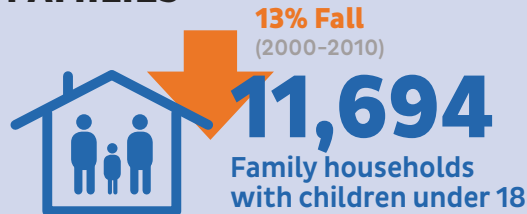
# Demographic Study

Sources:  
US Census 2010 & 2000  
& CalEnviroScreen 3.0

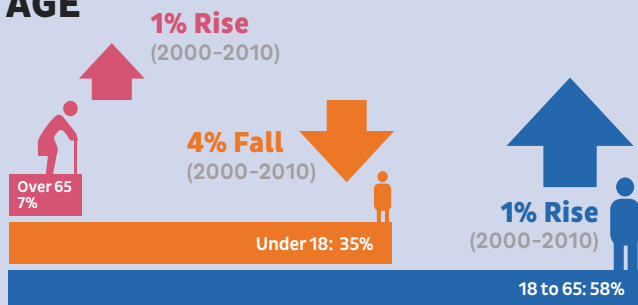
## POPULATION



## FAMILIES



## AGE

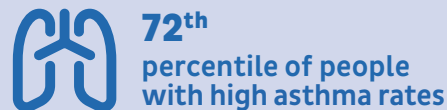


## EMISSIONS



**44.36 kg/day**  
Diesel Particulate Matter &  
**12.20 ug/m3**  
Particulate Matter 2.5  
Risk of heart & lung disease, irregular heartbeat, asthma decreased lung function, and other serious issues

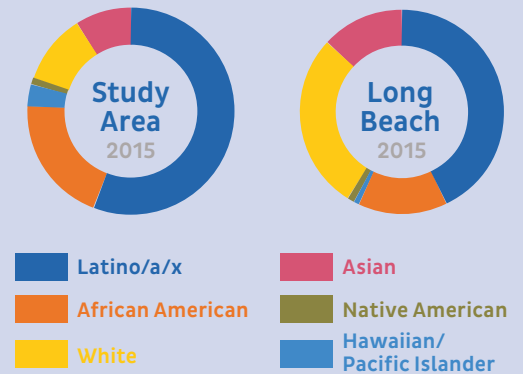
## ASTHMA RATES



## VEHICLE ACCESS



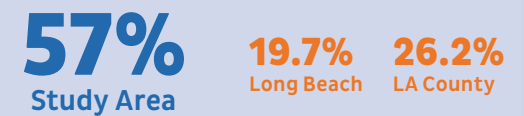
## DIVERSITY



## FOREIGN BORN

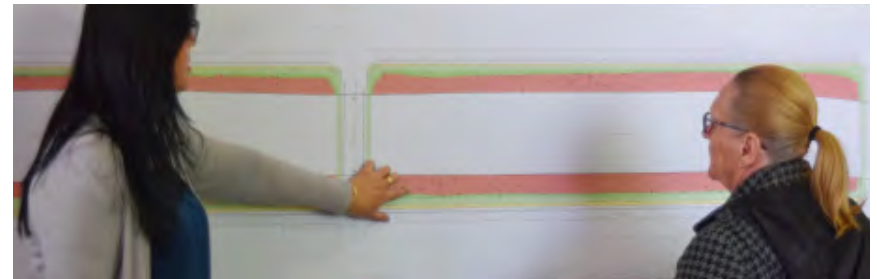
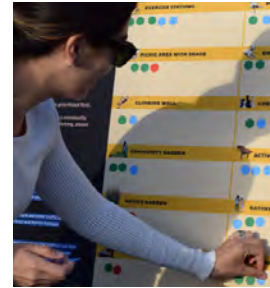


## LANGUAGE ISOLATION



# Community Engagement

 **8** Public Workshops & Stakeholder Meetings +  **62** Community Surveys =  **12** Community Identified Park Elements



### SCRAMBLE THE HAMILTON LOOP

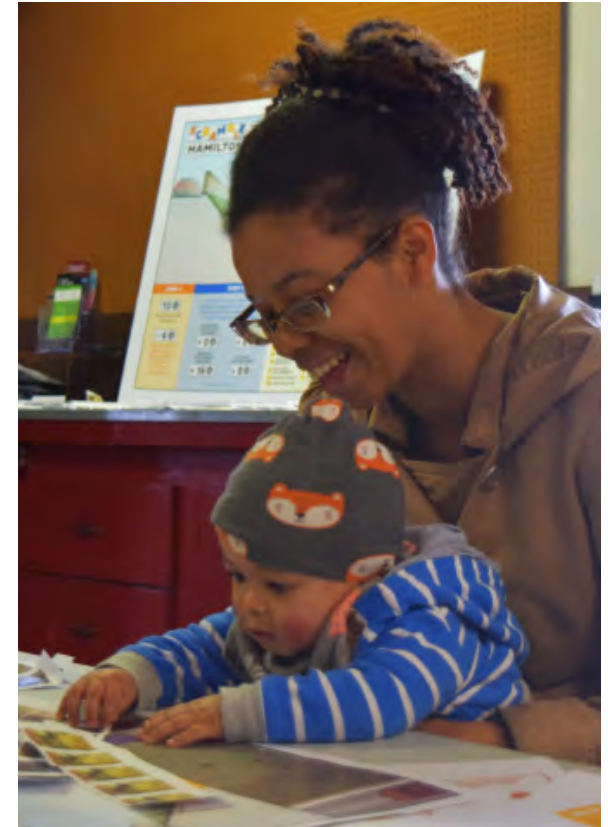
**STEP 2**

...the streets have many places to go to...  
...of 'big' streets, like...  
...of 'small' streets, like...  
...of 'medium' streets, like...

**STEP 1**

<b>60</b>	<b>80</b>	<b>80</b>	<b>80</b>	<b>80</b>
<b>60</b>	<b>80</b>	<b>80</b>	<b>80</b>	<b>80</b>

- WALKING FRIENDLY
- BIKE FRIENDLY
- WHEELCHAIR ACCESSIBLE
- PEDESTRIAN LIGHTS
- SMALL BUSINESS
- ARTS AND CULTURE
- WATER
- PLANTING
- SEATING
- SHADE
- WHEELCHAIR ACCESSIBLE
- PEDESTRIAN LIGHTS
- SMALL BUSINESS
- ARTS AND CULTURE
- WATER
- PLANTING
- SEATING
- SHADE



# The Color Block Walk



## PURPOSE

- Celebrate the collaborative efforts of the community.
- Inform residents about the Plan and solicit feedback.
- Prototype top vote-getting idea.

## METHODOLOGY

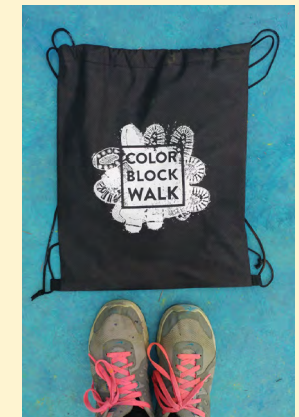
Host a community block party/walking event by prototyping the Hamilton Loop, and soliciting community feedback in the process.

## NUMBER OF PARTICIPANTS

250

## OUTCOMES

- Refine priority open space projects
- Share the Plan with wider audience
- Prototype the most popular idea
- Greater community ownership of the Plan



# Community Survey



## PURPOSE

Understand the types of improvements and amenities community members want for the Hamilton Loop.

## METHODOLOGY

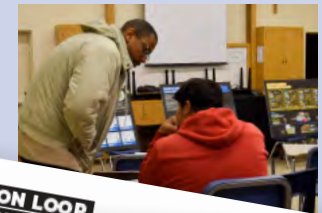
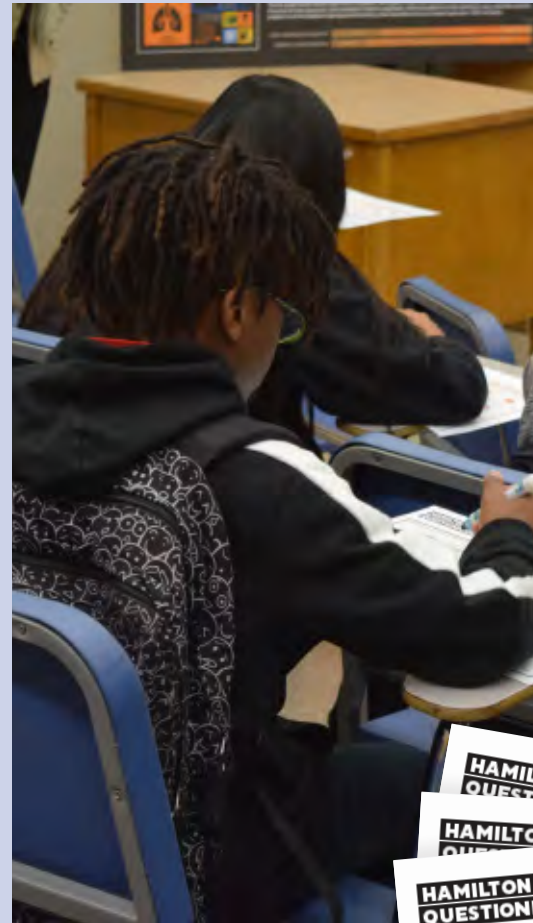
Distribute surveys in Spanish and English at public workshops, schools, organizations, and businesses.

## NUMBER OF PARTICIPANTS

62

## OUTCOMES

- Community-identified guiding principles
- Landscape design preferences
- Urban design improvements



# Community Survey

## 1. HOW SHOULD AMENITIES BE DISTRIBUTED?



## 2. WHAT KIND OF PATHWAY WOULD YOU LIKE TO SEE?



## 3. WHAT TYPES OF TREES & LANDSCAPING WOULD YOU LIKE TO SEE?



# Community Survey

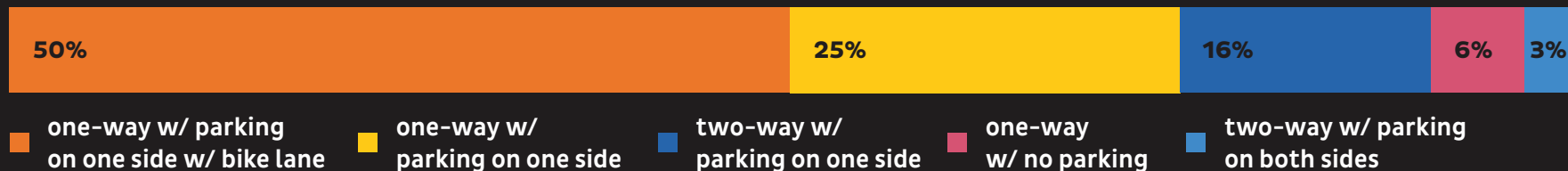
## 4. WHAT SHOULD BE THE PRIMARY GOAL FOR IMPROVING THE FREEWAY UNDERPASS?



## 5. WHAT SHOULD BE THE PRIMARY GOAL FOR IMPROVING THE STREET INTERSECTIONS?



## 6. WHAT IS YOUR PREFERRED LANE CONFIGURATION?





## SMALLER AMENITIES



Walking/  
Jogging Path



Pedestrian  
Lighting



Free  
Wi-Fi



Bicycle  
Pathway



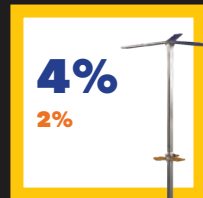
Public  
Art



Bench



Waste/Recycle  
Receptacle



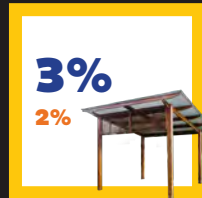
Charging  
Station



Hydration  
Station



Bioswale



Shade  
Structure



Tree



Dog Waste  
Dispenser



Wayfinding



Gateway  
Structure



Free Little  
Library

## LARGER AMENITIES



Outdoor  
Fitness Zone



Dog  
Park



Playground



Picnic  
Area



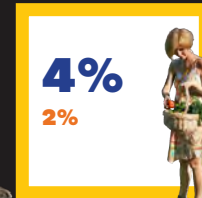
Education/  
Sensory Garden



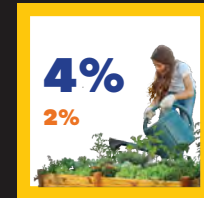
Stormwater  
Management



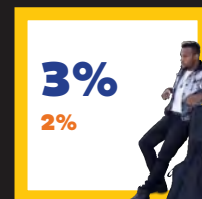
Habitat  
Preservation



Farmers  
Market



Community  
Garden



Performance  
Space



Climbing  
Wall



Commerical  
Areas

# Open Space Activity



## PURPOSE

- Identify potential amenities and roadway configurations.
- Educate community on real-life constraints such as equity, incompatible uses, and limited funding.

## METHODOLOGY

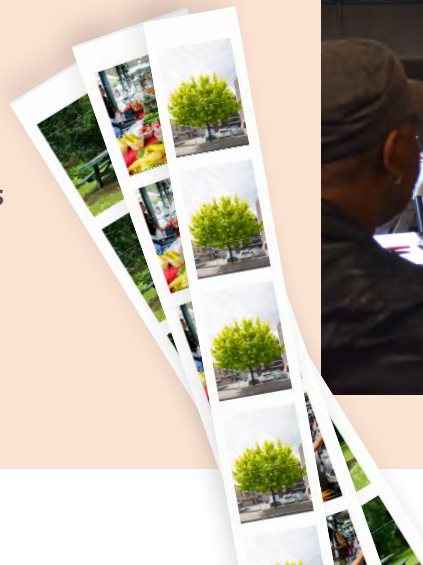
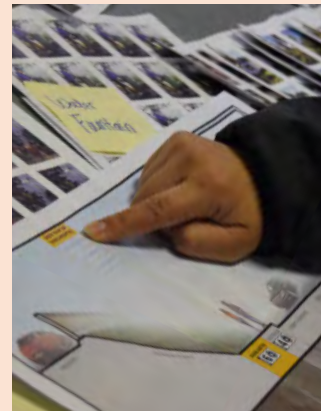
Community members play a game where they role-play as a park designer, under constraints.

## NUMBER OF WORKSHOPS

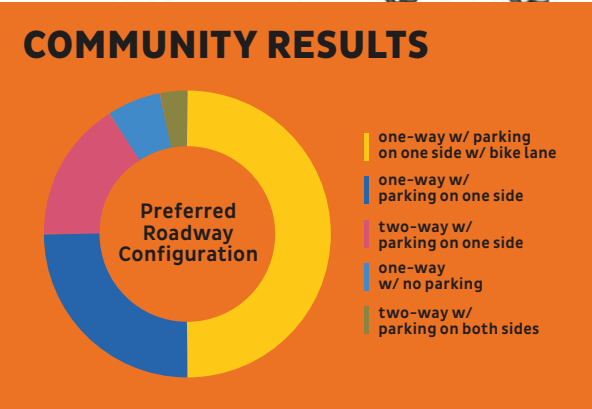
4 public and stakeholder workshops

## OUTCOMES

- Identified potential roadway configurations
- Identified park amenity needs
- Greater understanding of park planning



# Community-Proposed Roadway Configuration



# Refining Ideas



## PURPOSE

- Refine the landscape design and urban design.
- Inform residents about the Plan.

## METHODOLOGY

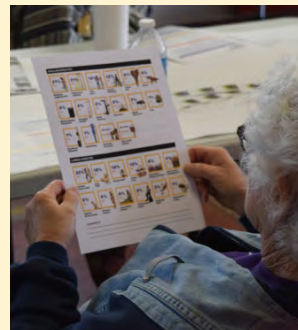
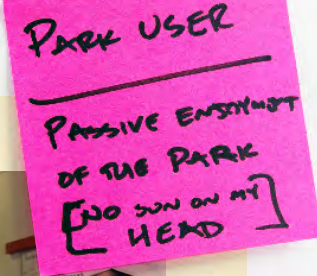
- Host a series of public design charrettes, including a design reveal celebration event.

## NUMBER OF PARTICIPANTS

58

## OUTCOMES

- Refine priority open space projects
- Share the Plan with wider audience
- Greater community ownership of the Plan





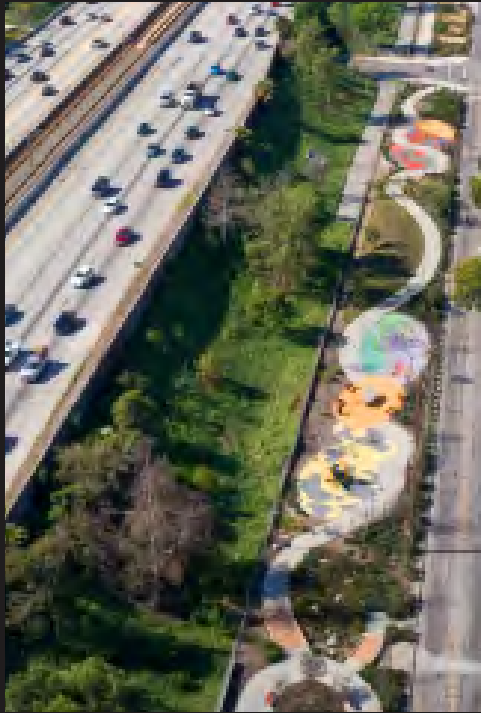
**I CAN NOTICE THERE'S  
BEEN A DIFFERENCE.  
THERE'S LESS TRASH AND  
MORE PEOPLE TAKING PRIDE  
IN UPKEEPING THEIR OWN SPACES.**

**RENETTE MAZZA, HAMILTON NEIGHBORHOOD ASSOCIATION LEADER**

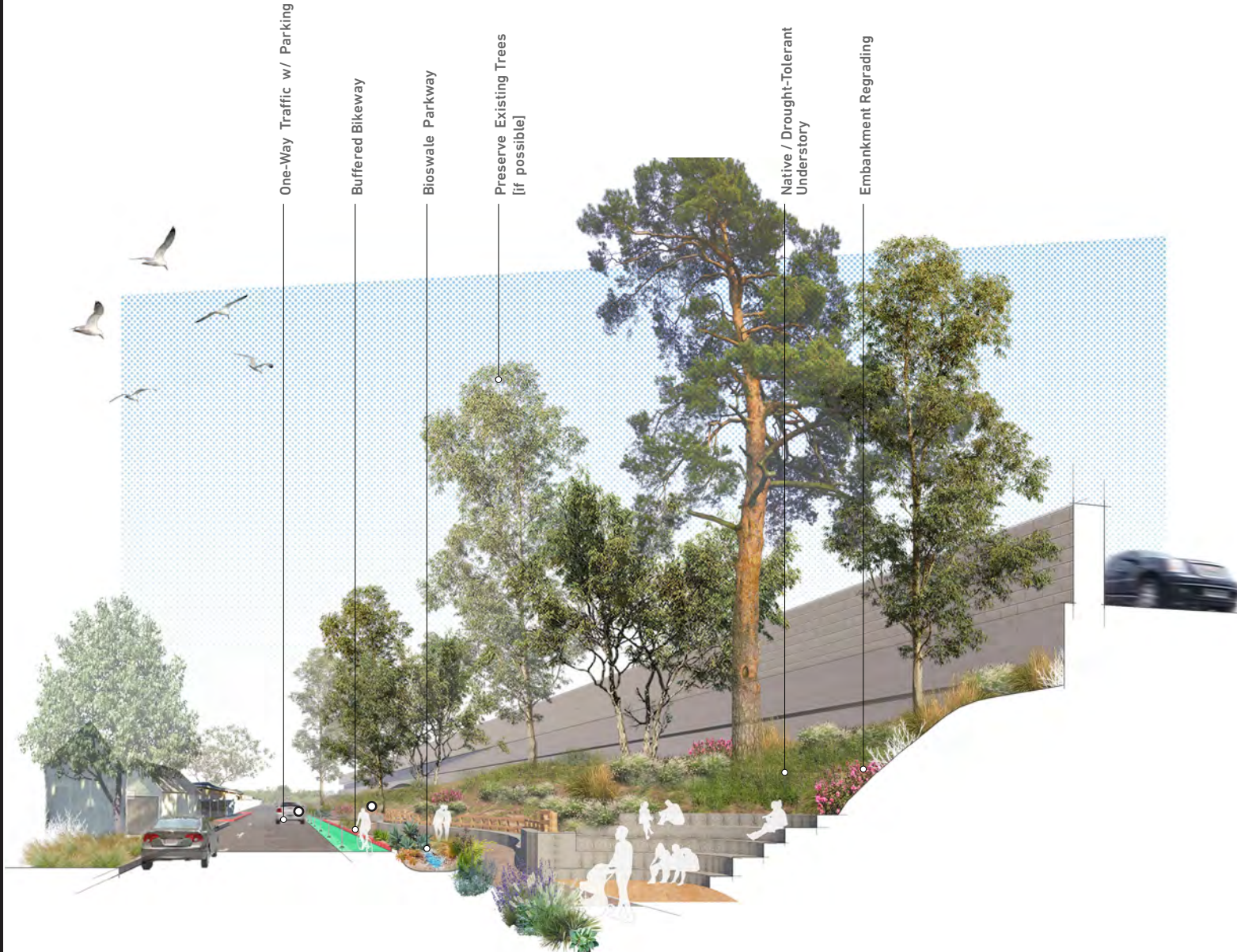
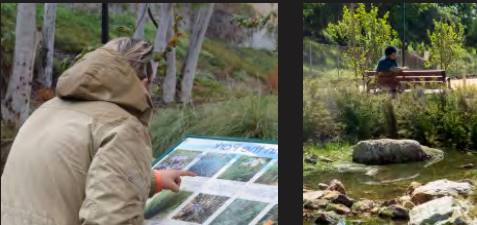
# Community Amenities



# BASELINE ELEMENTS



# BASELINE ELEMENTS





# Financing Breakdown

AMENITY	PENFOLD BLOCK	67 <sup>TH</sup> WEST BLOCK	ELEANOR BLOCK	67 <sup>TH</sup> EAST BLOCK
Baseline Elements	●	●	●	●
Exercise Station	●	●	●	●
Playground	○	●	●	○
Gathering Space with Wi-Fi	●	○	○	●
Passive Space	●	○	●	○
Chess Tables	●	○	●	○
Picnic Area + Shade Structure	○	●	●	●
Active Trail	○	●	●	●
Dog Park	○	●	●	○
Community Garden	○	●	○	●
Native Sensory Garden	○	○	○	●
<i>Project Management</i>	<b>POTENTIAL FUNDING SOURCES</b> <ul style="list-style-type: none"> <li>· Proposition 68</li> <li>· Measure A</li> <li>· CalTrans</li> <li>· Community Port Grant</li> <li>· Capital Improvement Fund</li> <li>· Measure W</li> <li>· Cultural Philanthropy &amp; Foundations</li> </ul>			
<i>20% Construction Contingency</i>				
<b>GRAND TOTAL</b>	<b>\$9,396,562</b>			

# Next Steps



**CALTRANS  
PERMIT**

**FREEWAY EARLY  
ACTION PROGRAM**

**PROJECT  
FUNDING**

**ENGINEERING  
& DESIGN**

**CONSTRUCTION**



**Thank  
You!**