

Aquarium of the Pacific's

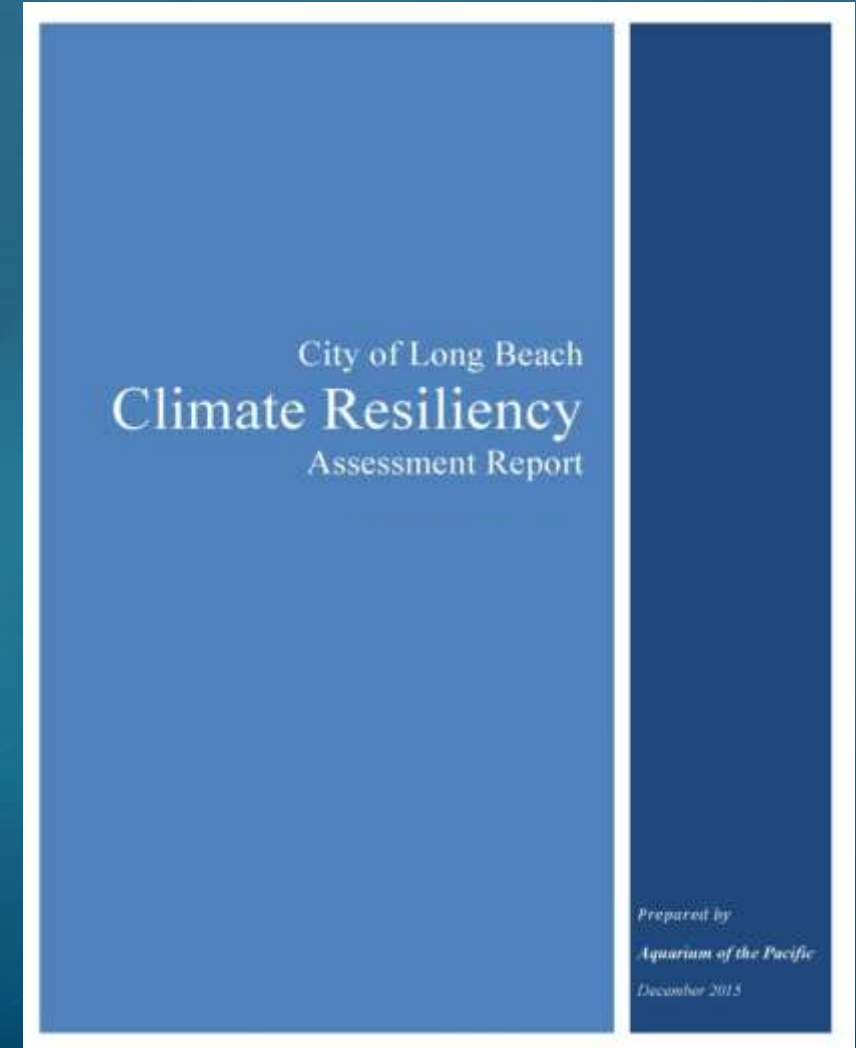
Climate Resilience Work



Jenny Lentz, Ph.D.

Aquarium of the Pacific

Climate Resiliency Assessment Report (2015)



Quick Reference Guides based on the Report

The screenshot shows the Long Beach Sustainability website. At the top, there is a navigation bar with the Long Beach logo, a menu icon, a language selector, and a search bar. Below this is a green navigation bar with links for Home, About Us, Nature Initiatives, Green Urban Life, Green Urban Services, and Programs. The main content area features a breadcrumb trail: Home > Sustainability > News > Sustainability Spotlight: Climate Resiliency Guides. The central image shows two staff members at a booth for the Aquarium of the Pacific, with a tablecloth that reads "#Resilient LB AQUARIUM OF THE PACIFIC". Below the image is the article title "SUSTAINABILITY SPOTLIGHT: CLIMATE RESILIENCY GUIDES" and the release date "2018-03-06". To the right, a sidebar contains "Quick Links" (EV Charger Giveaway, Mulch Delivery & Pickup, Tree Planting, Edible Garden, UAIZ Program), "Sustainable City Commission Meeting" (March 22nd, 2018, 4:00 PM, City Council Chambers), "Newsletter" (with a "Join Our Email List" button), and "Contact Us".



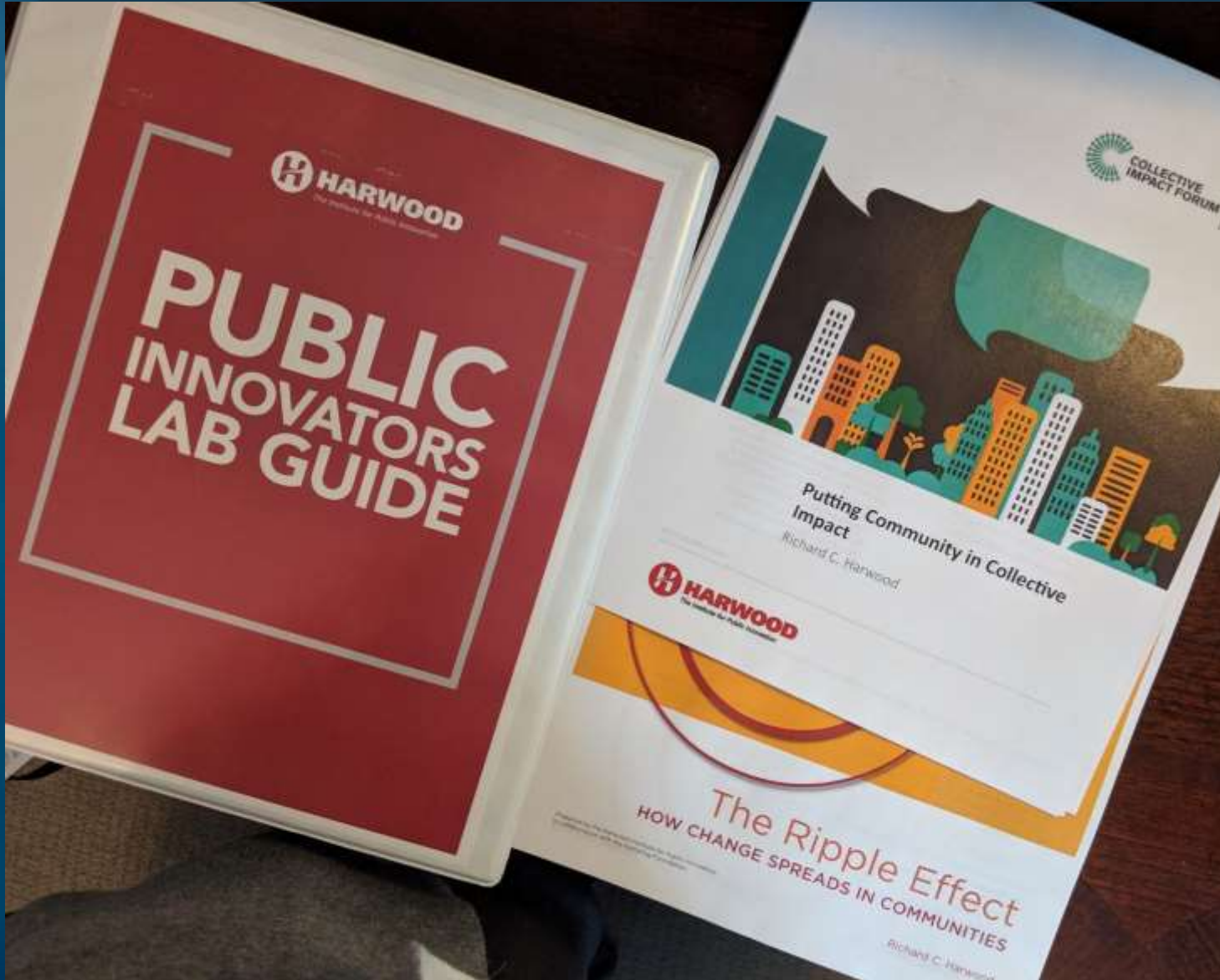
#ResilientLB Outreach Booth



What do you LOVE most about Long Beach?



Harwood Public Innovators Virtual Lab



8 week training on
“Turning Outward”
in order to use
your Community & not
your conference room
as your reference point
for choices & action
regarding
Climate Resilience

Community Conversations



1. What kind of community do you want do you want to live in?
2. Why is that important to you?
3. How is that different than what you see now?
4. What are some of the things that need to happen to create the kind of community you want?

Communities Advancing Science Literacy (CASL)



Khmer Girls in Action
LIKE A LOTUS, WE RISE

Co-hosted a Lung Power Asthma Education Family Day

Presented by:



BREATHE EASIER.™



LUNG POWER

An Asthma Education Family Day
at the Aquarium of the Pacific
Saturday, May 11, 2019
9:00AM - 12:30PM

Does your child have asthma? Join BREATHE LA for a fun family day of asthma education at the Aquarium with physician tips for managing childhood asthma.

- Learn how to recognize, prevent and manage an asthma attack
- Proper use of asthma medication and spacers
- Gain confidence to participate in sports, school activities and healthy lifestyle habits

Explore the underwater world, interact with sea stars and jellies in the Aquarium Touch Labs and get up close with penguin care to see how animal lung health matters too!

Registration is **REQUIRED**, and includes a FREE lunch and full day admission to the Aquarium.* Register at breathela.org

**Credit card will be needed for registration. Failure to attend the event without cancellation will result in a \$10 charge on provided credit card.*



BREATHELA.ORG
@BREATHELAC

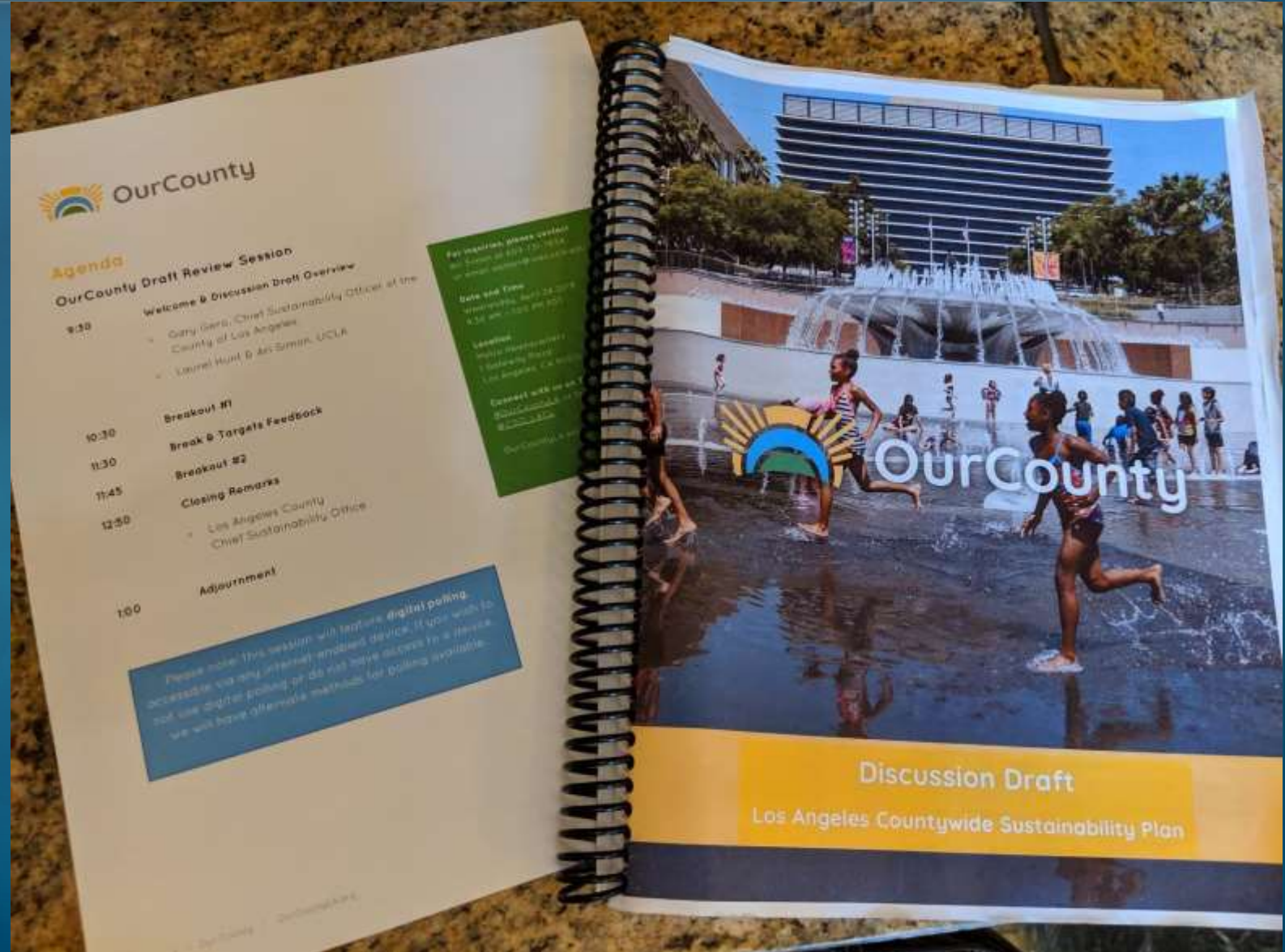


'Our County' Workshops & Draft Review

Public Health & Air Quality

Waste & Resource Management

Water & People workshops

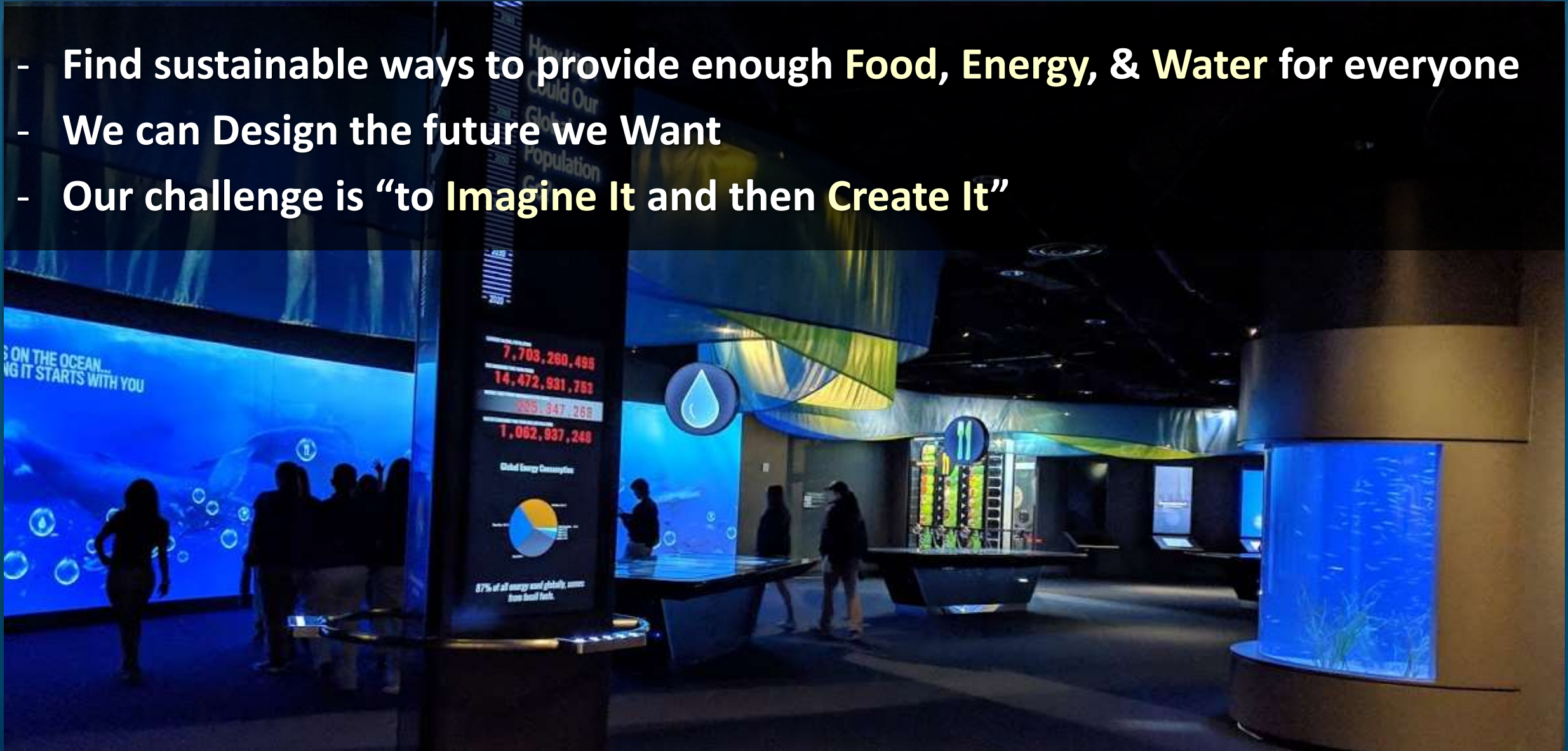


Pacific Visions Expansion



Pacific Visions Expansion – Call to Action

- Find sustainable ways to provide enough Food, Energy, & Water for everyone
- We can Design the future we Want
- Our challenge is “to Imagine It and then Create It”



@resilientLBaop on Facebook & Twitter

Resilient Long Beach



Resilient Long Beach
@resilientLBaop

Home About Photos Videos Community Reviews Posts

Join fellow community members for the Sustainable City Commission meeting at City Hall at 4pm TODAY! We'll hear about Waste Reduction methods from the Environmental Services Bureau, along with other #SustainableLB updates. #ResilientLB
<http://www.longbeach.gov/.../abo.../sustainable-city-commission/...>

CITY OF LONG BEACH
LONGBEACH.GOV
Sustainable City Commission
The eleven member Sustainable City Commission advises the City Council on environmental issues such as buildings and neighborhoods, urban nature, transportation, water, energy, waste

Like Comment Share

Resilient Long Beach
March 27

Dr. Jenny is excited to be giving a talk & participating in the panel discussion upcoming CAAP event on #ExtremeHeat THIS Saturday (March 30th)!
extremehheatinlb.eventbrite.com #CAAPLB #ResilientLB #LeadOnClimate

**JOIN US FOR A PANEL DISCUSSION ON
EXTREME HEAT IN LONG BEACH:
STAYING SAFE & SOLVING CLIMATE CHANGE**

Search for posts on this Page

Visitor Posts

Jennifer Lentz
April 18 at 10:38 AM

For anyone who missed last month's "Extreme Heat in Long Beach. Stay... See More

1 Share
Like Comment

Jennifer Lentz
March 30 at 5:21 PM

Thanks to everyone who attended the #CAAPLB's Extreme Heat in Long B... See More

1 Like 1 Comment 1 Share
Like Comment

Jennifer Lentz
March 30 at 5:16 PM

A few of us also mentioned Project Drawdown during #CAAPLB's Extreme... See More

Home Moments Notifications Messages Search Twitter

#ResilientLB
AQUARIUM OF THE PACIFIC helping to build a Climate Resilient Long Beach



Tweets 403 Following 51 Followers 84 Likes 36

Following

resilientLBaop
@resilientLBaop

Aquarium of the Pacific helping to build a Climate Resilient Long Beach

Long Beach, CA
pacific.to/resilientLBaop
Joined August 2017

Tweet to resilientLBaop

30 Followers you know

155 Photos and videos

resilientLBaop @resilientLBaop · Mar 28

Join fellow community members for the Sustainable City Commission meeting at City Hall at 4pm TODAY! We'll hear about Waste Reduction methods from the Environmental Services Bureau, along with other #SustainableLB updates.
#ResilientLB

longbeach.gov/sustainability...

resilientLBaop @resilientLBaop · Mar 27

Dr. Jenny is excited to be giving a talk & participating in the panel discussion upcoming CAAP event on #ExtremeHeat THIS Saturday (March 30th)!
extremehheatinlb.eventbrite.com #CAAPLB #ResilientLB #LeadOnClimate

**JOIN US FOR A PANEL DISCUSSION ON
EXTREME HEAT IN LONG BEACH:
STAYING SAFE & SOLVING CLIMATE CHANGE**

**SATURDAY, MARCH 30, 2019, 10:00 A.M. - 1:00 P.M.
SILVERADO PARK, 1545 W 31ST ST.**

COMMUNITY RESOURCES • FOOD • INTERACTIVE ACTIVITIES

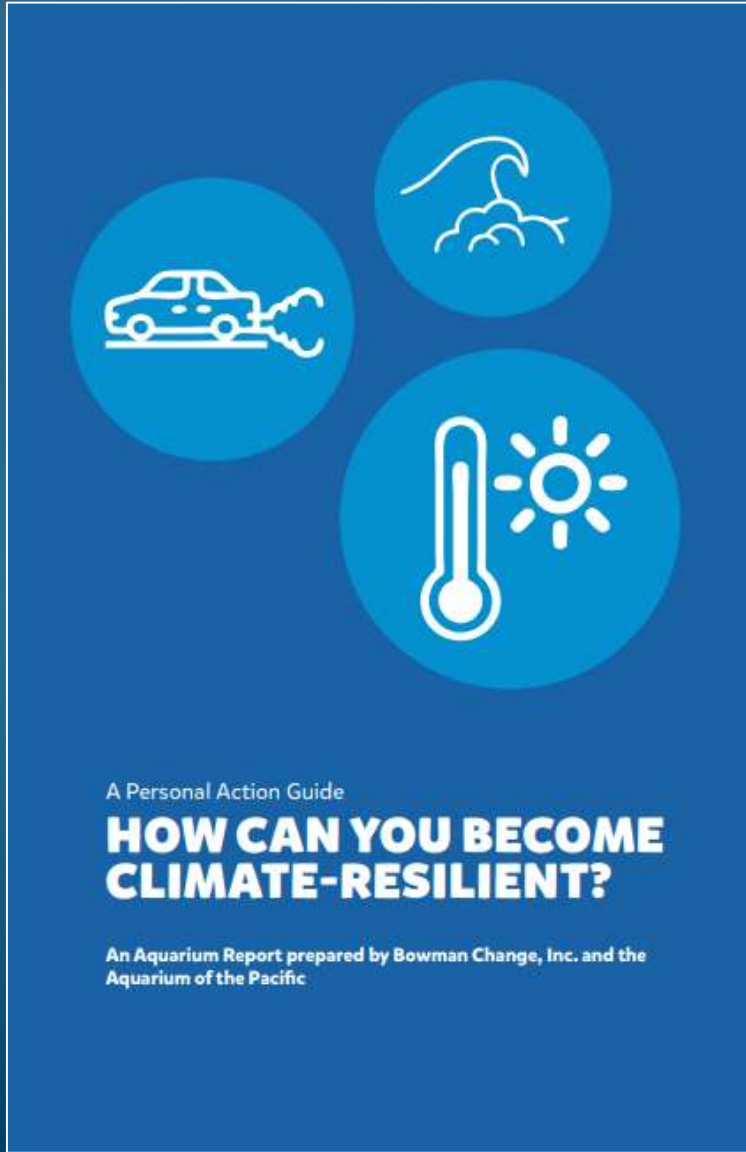
LEARN ABOUT:

- How extreme heat from climate change causes power outages, heat stroke, and missed work or school that can impact older adults, children, and other vulnerable populations
- How to keep your families and homes safe and healthy during extreme heat waves in Long Beach and other cities
- Discuss the City of Long Beach's Climate Action and Adaptation Plan (CAAP) and broader solutions to climate change

Find more information and RSVP: www.lbds.info/climateactionlb



Get Involved



Follow our hashtag:
#ResilientLB

Follow us on Twitter & Facebook:
@resilientLBaop

Check out our resources:
<http://pacific.to/resilientLBaop>

Email us:
Resilient@LBaop.org





Thank You

