



LONG BEACH REDEVELOPMENT AGENCY

333 WEST OCEAN BOULEVARD, THIRD FLOOR • LONG BEACH, CA 90802 • (562) 570-6615 • FAX (562) 570-6215

August 21, 2006

REDEVELOPMENT AGENCY BOARD MEMBERS

City of Long Beach
California

RECOMMENDATION:

Recommendation to approve and authorize the Executive Director to waive Redevelopment Agency design review authority for expansion of the 24-Hour Fitness Club at 100 Oceangate Plaza. (West Beach – District 2)

DISCUSSION

The Redevelopment Agency has recently been contacted by Legacy Partners, owner of 100 Oceangate Plaza (Exhibit A – Site Map), about plans to expand their complex for an enlarged 24-Hour Fitness Club with additional parking. While there is no Redevelopment Agency involvement in this project, it does fall to the Agency for design review per the adopted policy, since it is located in the West Beach Redevelopment Project Area.

This adopted policy also allows the Executive Director to waive the design review authority. Staff is proposing to exercise this option for this project. To do so will streamline the process for the property owner who has expressed a desire to have the design review and planning processes integrated if possible. Design review will be administered by the Planning Department and Stephanie Reich, the City's Urban Design Officer, who is experienced in architectural design.

Staff has taken a preliminary look at the project and believes that it will have minimal impact on the urban design of the downtown area.

SUGGESTED ACTION:

Approve recommendation.

REDEVELOPMENT AGENCY BOARD MEMBERS

August 21, 2006

Page 2

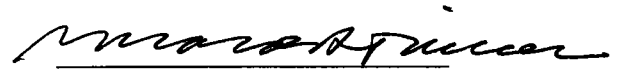
Respectfully submitted,



PHW PATRICK H. WEST
EXECUTIVE DIRECTOR

PHW:CAB:RSW

APPROVED:



GERALD R. MILLER
CITY MANAGER

Attachment: Exhibit A – Site Map

EXHIBIT A

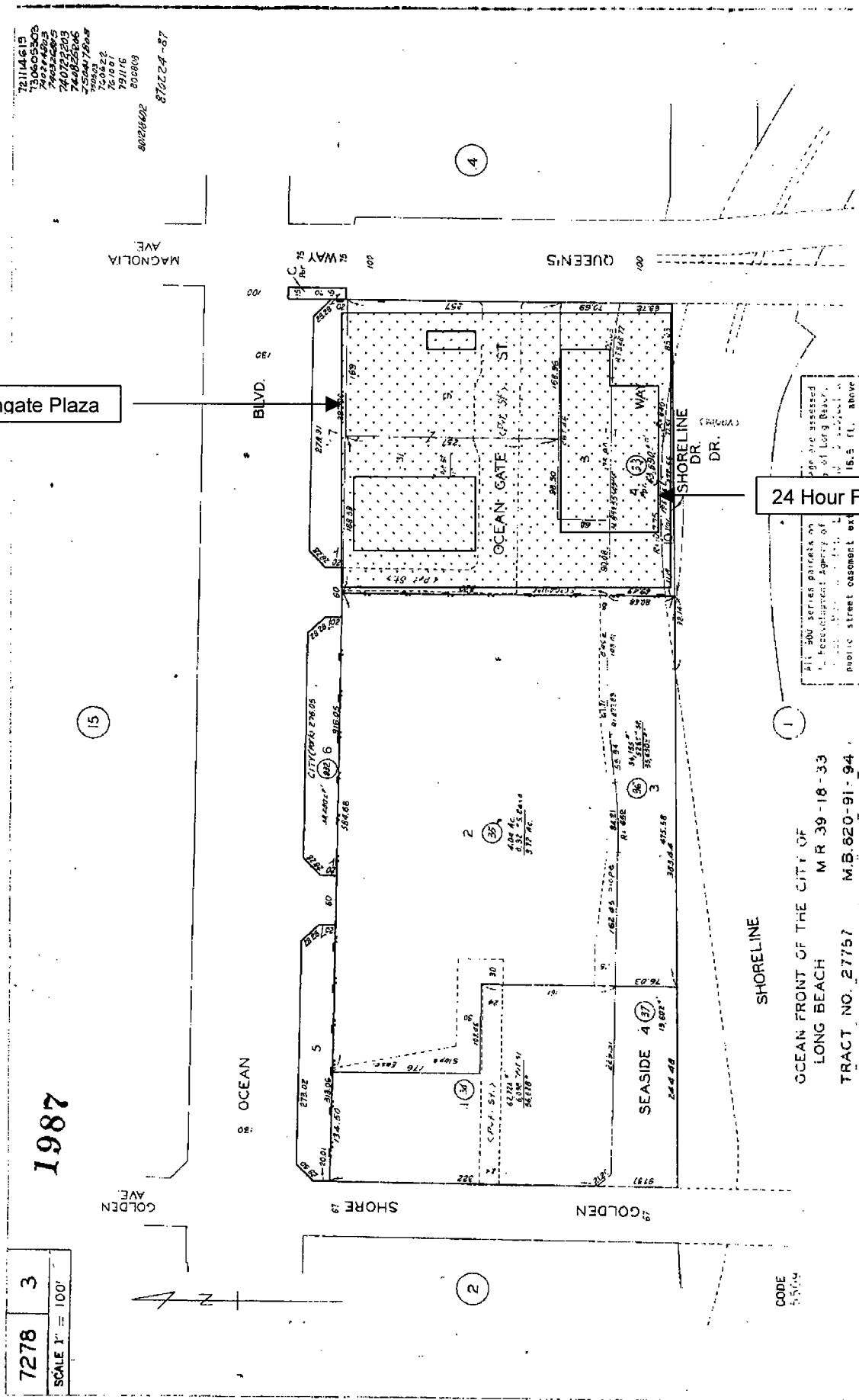
County of Los Angeles: Rick Auerbach, Assessor

100 Oceangate Plaza

24 Hour Fitness/Parking

72114619
 730605303
 740060603
 740236060
 740723000
 740723000
 740823000
 740823000
 740823000
 740823000
 80126402
 81018109
 81018109
 81018109
 81018109
 870224-87

7278 3
 SCALE 1" = 100'
 1987



SHORELINE

CODE
 5-5014

OCEAN FRONT OF THE CITY OF
 LONG BEACH M.R. 39-18-33
 TRACT NO. 27757 M.B. 620-91-94
 PARCEL MAP P.M. 71-14

FOR PREV. ASSM'T SEF.
 7278-3

ASSESSOR'S MAP
 COUNTY OF LOS ANGELES, CALIF.