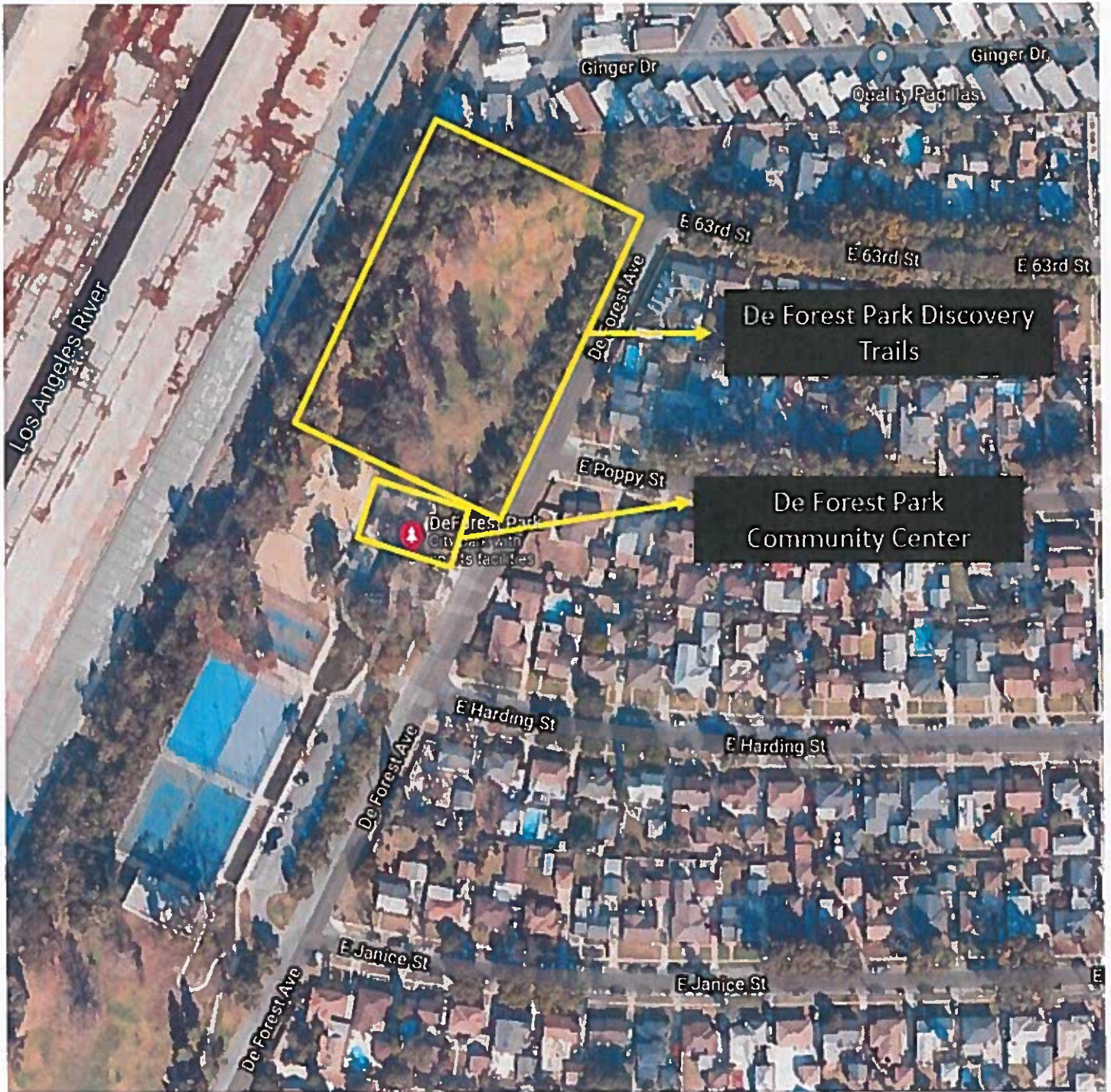


**ATTACHMENT B  
CAMP FIRE ANGELES**

**6255 DE FOREST PARK  
COMMUNITY CENTER AND DISCOVERY TRAILS**







DATE	NO.	DESCRIPTION

BOUNDARY & MONUMENTARY  
LDS. BLOCK CULMINA



ROSEL SURVEYING  
1000 S. GARDEN STREET, SUITE 100, LOS ANGELES, CALIFORNIA 90007  
TEL: (213) 475-1111  
FAX: (213) 475-1112  
WWW.ROSEL-SURVEYING.COM



SYMBOLS	
	Boundary Line
	Monument
	Easement
	Utility Line
	Fence
	Road
	Stream
	Building
	Tree
	Well
	Power Pole
	Water Meter
	Fire Hydrant
	Manhole
	Catch Basin
	Storm Drain
	Sewer Line
	Water Line
	Gas Line
	Electric Line
	Telephone Line
	Cable TV Line
	Street Light
	Fire Hydrant
	Manhole
	Catch Basin
	Storm Drain
	Sewer Line
	Water Line
	Gas Line
	Electric Line
	Telephone Line
	Cable TV Line

ALL LOTS AND AREAS SHOWN HEREIN ARE SUBJECT TO THE EASEMENTS AND RESTRICTIONS SET FORTH IN THE PLAT OF THE SUBDIVISION.

ALL LOTS AND AREAS SHOWN HEREIN ARE SUBJECT TO THE EASEMENTS AND RESTRICTIONS SET FORTH IN THE PLAT OF THE SUBDIVISION.

LOS ANGELES RIVER

63RD STREET

POPPY STREET

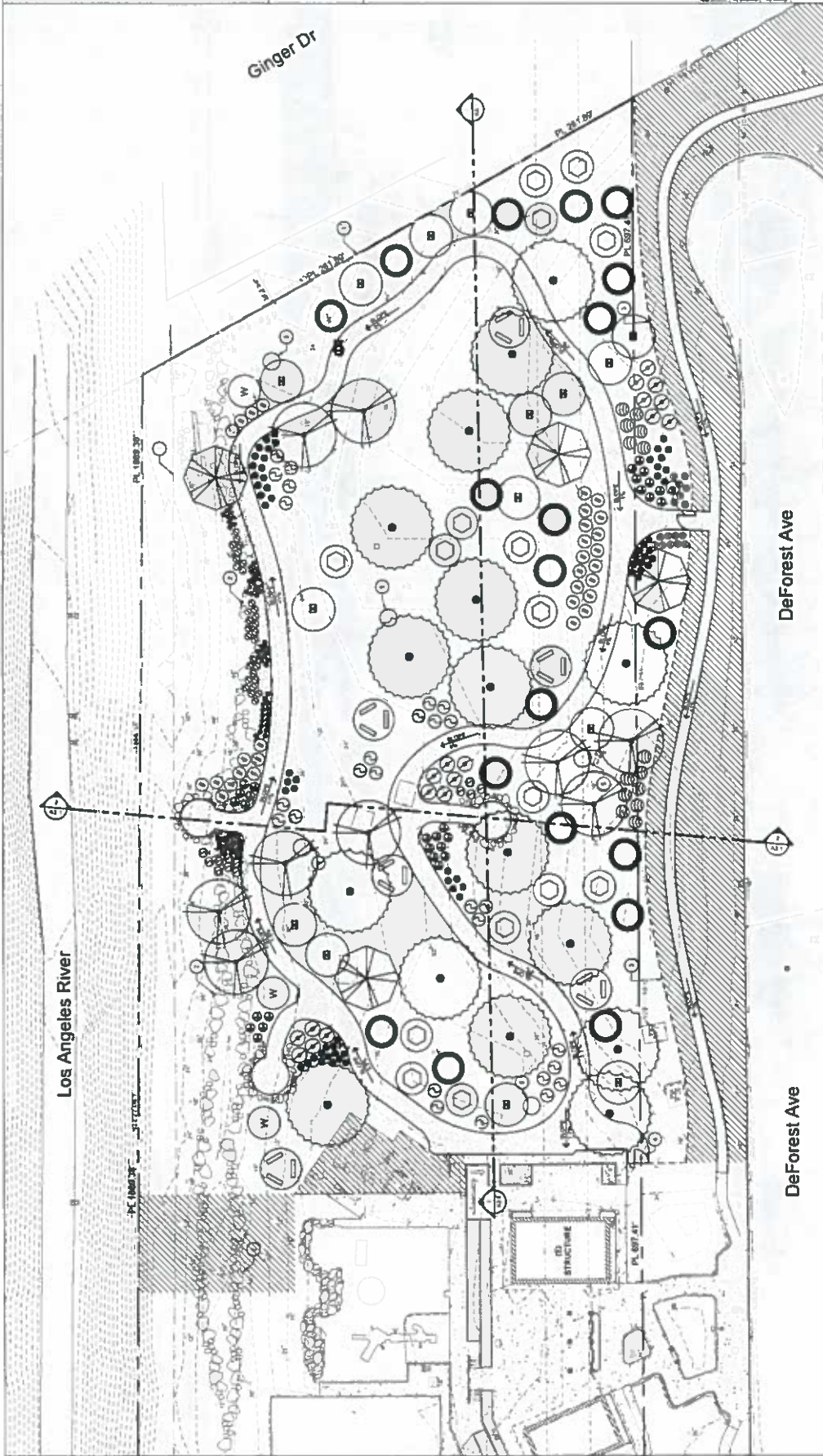
FOR REFERENCE ONLY

MATCH LINE, SEE SHEET 2



integrated  
design  
construction  
management  
sustainability  
**totum**

Camp Shiwaka  
At DeForest Park  
6255 DeForest ave  
long beach, ca 90805



1  
SITE PLAN  
SCALE

2  
3  
4  
5  
6  
7  
8  
9  
10  
11  
12  
13  
14  
15  
16  
17  
18  
19  
20  
21  
22  
23  
24  
25  
26  
27  
28  
29  
30  
31  
32  
33  
34  
35  
36  
37  
38  
39  
40  
41  
42  
43  
44  
45  
46  
47  
48  
49  
50  
51  
52  
53  
54  
55  
56  
57  
58  
59  
60  
61  
62  
63  
64  
65  
66  
67  
68  
69  
70  
71  
72  
73  
74  
75  
76  
77  
78  
79  
80  
81  
82  
83  
84  
85  
86  
87  
88  
89  
90  
91  
92  
93  
94  
95  
96  
97  
98  
99  
100

**SITE PLAN KEY NOTES**

- (1) FENCE TO REMAIN
- (2) DRYCREEK TO REMAIN
- (3) FENCE
- (4) PHOTO GATE
- (5) WOODEN TABLE

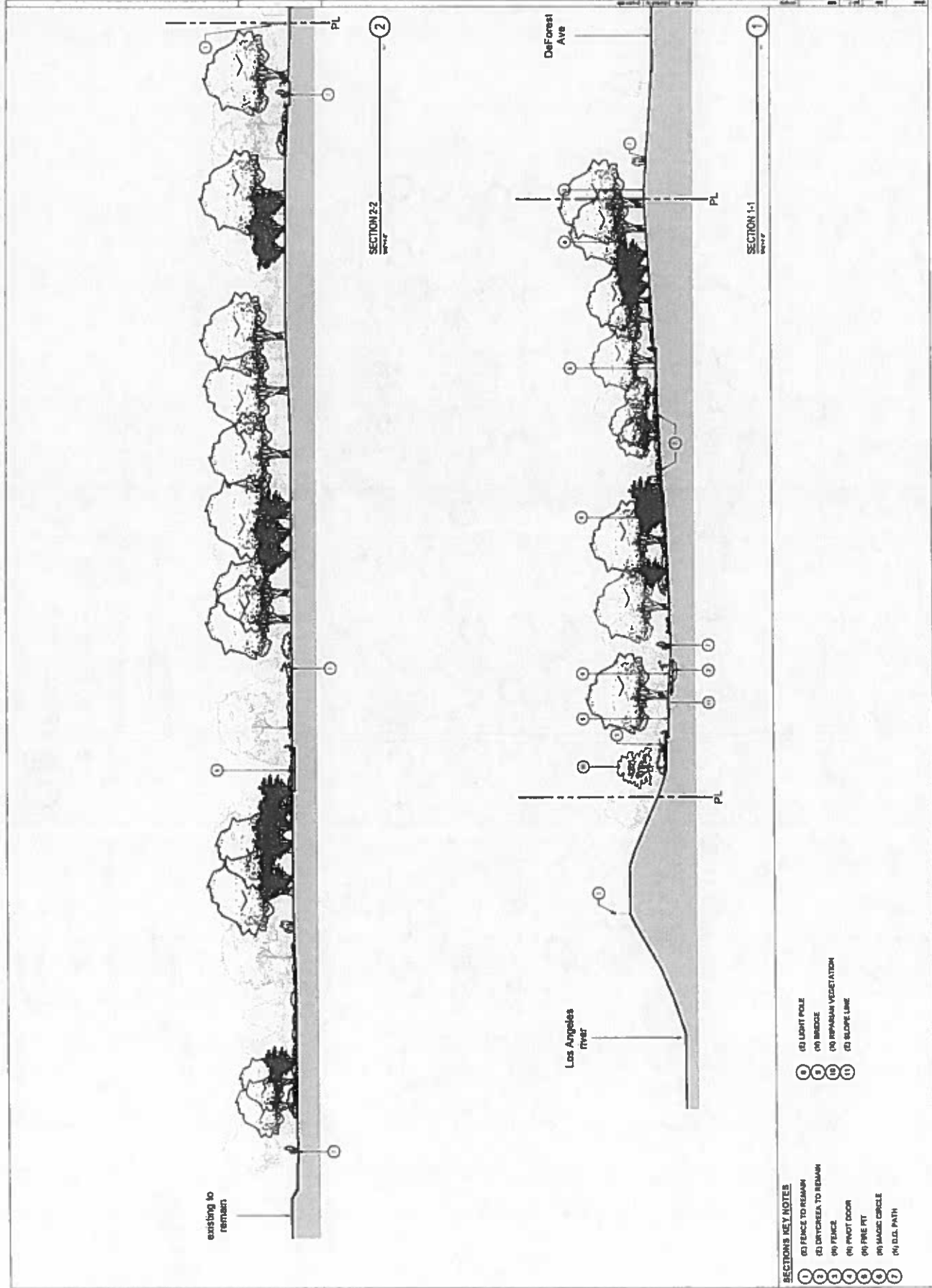
**LEGEND**

- (M) MAGIC CIRCLE
- (P) FIRE PIT. SEE SHEET AS 14
- (D) D.G. PATH. SEE SHEET AS 21
- (W) WOODEN TABLE

**PLANTS LEGEND**

- (S) SHRUBS. SEE LANDSCAPE DWG
- (T) TREETEX. SEE LANDSCAPE DWG
- (R) REDUPLICATION PLANTS. SEE LANDSCAPE DWG
- (G) GRASS. SEE LANDSCAPE DWG
- (P) PERENNIALS / UNDERSTORY. SEE LANDSCAPE DWG

(1) TURF AREA TO REMAIN  
(T) TREES. SEE LANDSCAPE DWG



**SECTION'S KEY NOTE**

- 1 FENCE TO REMAIN
- 2 DRYCREEK TO REMAIN
- 3 FENCE
- 4 PIVOT DOOR
- 5 PINE PIT
- 6 MAGIC CIRCLE
- 7 D.L.S. PATH

- 8 LIGHT POLE
- 9 BRIDGE
- 10 IRIPAGAN VEGETATION
- 11 SLOPE LINE

SECTION 1-1  
1/2" = 1'

SECTION 2-2  
1/2" = 1'



































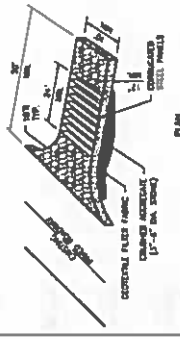
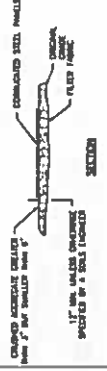
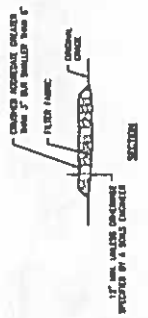


Integrated  
Design  
Construction  
Management  
Sustainability  
Totum

Camp Shiwaka  
At DeForest Park  
6255 DeForest Ave  
Long beach, ca 90805

1304  
CIVIL DETAILS

C5.00



- NOTES:**
- THE CONSTRUCTION ELEMENTS SHOWN SHALL BE CONSTRUCTED TO BE DURABLE, RESISTANT TO WEAR AND TEAR, AND TO BE MAINTAINED IN GOOD CONDITION THROUGHOUT THE PROJECT'S LIFE CYCLE. ALL MATERIALS SHALL BE APPROVED BY THE ARCHITECT AND THE SOIL LOGICLER.
  - STABILIZED CONSTRUCTION ELEMENTS SHALL BE LOCATED AT ANY POINT WHERE IMPACT WILL BE LIKELY TO OCCUR. CONSTRUCTION SHALL BE PERFORMED IN ACCORDANCE WITH THE SOIL LOGICLER'S RECOMMENDATIONS.
  - ALL WORK SHALL BE ACCORDING TO THE SOIL LOGICLER'S RECOMMENDATIONS AND SHALL BE PERFORMED IN ACCORDANCE WITH THE SOIL LOGICLER'S RECOMMENDATIONS.
  - ALL WORK SHALL BE ACCORDING TO THE SOIL LOGICLER'S RECOMMENDATIONS AND SHALL BE PERFORMED IN ACCORDANCE WITH THE SOIL LOGICLER'S RECOMMENDATIONS.

**STREET MAINTENANCE NOTES**

- REMOVE ALL STONES REMOVED ON ROAD REPAIRS IMMEDIATELY.
- REMOVE ALL STONES REMOVED ON ROAD REPAIRS IMMEDIATELY.
- REMOVE ALL STONES REMOVED ON ROAD REPAIRS IMMEDIATELY.

**2 | STABILIZED CONSTRUCTION ENTRANCE**

SLURRY WALL TYPE	MINIMUM WALL THICKNESS (mm)	MINIMUM WALL HEIGHT (mm)	MINIMUM WALL WIDTH (mm)
1. 1.1 (M4)	100	150	150
2. 2.1 (M4)	100	150	150

**NOTES:**

- THE WALLS SHALL BE CONSTRUCTED TO BE DURABLE, RESISTANT TO WEAR AND TEAR, AND TO BE MAINTAINED IN GOOD CONDITION THROUGHOUT THE PROJECT'S LIFE CYCLE. ALL MATERIALS SHALL BE APPROVED BY THE ARCHITECT AND THE SOIL LOGICLER.
- THE WALLS SHALL BE CONSTRUCTED TO BE DURABLE, RESISTANT TO WEAR AND TEAR, AND TO BE MAINTAINED IN GOOD CONDITION THROUGHOUT THE PROJECT'S LIFE CYCLE. ALL MATERIALS SHALL BE APPROVED BY THE ARCHITECT AND THE SOIL LOGICLER.
- THE WALLS SHALL BE CONSTRUCTED TO BE DURABLE, RESISTANT TO WEAR AND TEAR, AND TO BE MAINTAINED IN GOOD CONDITION THROUGHOUT THE PROJECT'S LIFE CYCLE. ALL MATERIALS SHALL BE APPROVED BY THE ARCHITECT AND THE SOIL LOGICLER.
- THE WALLS SHALL BE CONSTRUCTED TO BE DURABLE, RESISTANT TO WEAR AND TEAR, AND TO BE MAINTAINED IN GOOD CONDITION THROUGHOUT THE PROJECT'S LIFE CYCLE. ALL MATERIALS SHALL BE APPROVED BY THE ARCHITECT AND THE SOIL LOGICLER.

**1 | DRAINAGE BARRIER**

- USE PRECAST APPROACH WITH TYPICAL BARS.





















**IRRIGATION EQUIPMENT LEGEND:**

SYMBOL	MANUFACTURER	MODEL NO.	DESCRIPTION
	EXISTING - WA	EXISTING - WA	EXISTING IRRIGATION SMART CONTROLLER MOUNTED IN FREE-STANDING FRONT ENTRY ENCLOSURE. COORDINATE WITH CITY OF LONG BEACH PUBLIC WORKS DEPARTMENT - PROTECT IN PLACE. COORDINATE ANY CONTROLLER RELATED WORK WITH CITY OF LONG BEACH PUBLIC WORKS DEPARTMENT. PARK REC & MARINE, AND PARK MAINTENANCE STAFF
	EXISTING - WA	EXISTING - WA	EXISTING BACKFLOW PREVENTER ASSEMBLY - CONFORM SIZE IN FIELD - INCLUDES EXISTING COORDINATE WITH CITY OF LONG BEACH PUBLIC WORKS DEPARTMENT. ANY BACKFLOW RELATED WORK WITH CITY OF LONG BEACH PUBLIC WORKS DEPARTMENT. PARK REC & MARINE, AND PARK MAINTENANCE STAFF
	HUNTER	WA-1910-PS-40-ADU V-1019H-4C NY-100	DRIP ELECTRIC CONTROL VALVE ASSEMBLY - USE 1/2" SCHEDULE 40 PVC BALL VALVE AND ALGAE RESISTANT PVC SUPPLY TUBING INSTALL WITHIN 8" ROUND VALVE BOX - REFER TO DETAIL 1.1. SHEET L-1
	HUNTER	WA-1910-PS-40-ADU V-1019H-4C	ELECTRIC CONTROL VALVE ASSEMBLY - USE 1/2" SCHEDULE 40 PVC BALL VALVE AND ALGAE RESISTANT PVC SUPPLY TUBING INSTALL WITHIN 8" ROUND VALVE BOX - REFER TO DETAIL 1.1. SHEET L-1
	DOG	16-028	AIR / RELIEF VALVE - THREADED - 1/2" BORE - 1/2" NPT - INSTALL WITHIN 8" ROUND VALVE BOX - REFER TO DETAIL 1.1. SHEET L-1
	LASCO	NY-100	DRIP FLUSH OUT ASSEMBLY - 1/2" BORE - 1/2" NPT - COORDINATE ANY MAINLINE RELATED WORK WITH CITY OF LONG BEACH PUBLIC WORKS DEPARTMENT. PARK REC & MARINE, AND PARK MAINTENANCE STAFF
	LASCO	NY-100	DOMESTIC WATER SERVICE CONNECTION - ADDITIONAL INFORMATION NOTED WITH POC CALLOUT

EXISTING PRESSURE MAIN LINE PIPING - PROTECT IN PLACE - REFER TO DETAILS 1.1.2, SHEET L-1. COORDINATE ANY MAINLINE RELATED WORK WITH CITY OF LONG BEACH PUBLIC WORKS DEPARTMENT. PARK REC & MARINE, AND PARK MAINTENANCE STAFF

NON-PRESSURE LATERAL LINE PIPING - SCHEDULE 40 PVC - 3/4" MINIMUM SIZE PIPING (NOTED IN INCHES) OTHER SIZES NOTED AS SHOWN ON PLAN - REFER TO DETAIL 2. SHEET L-1

DRIP LINE SYSTEM - PRESSURE COMPENSATION DRIP EMITTERS - 45 GPH @ 15 INCHES O.D. POLYETHYLENE TUBING WITH WALL THICKNESS OF 0.15" WITH COMPRESSION-TYPE FITTINGS FOR 1/2" TEAL, TEAL, COPOLYMER AND PVC ADAPTERS - PROVIDE 3-INCH METAL INSTALLATION TO BE USED TO CONNECT TO DRIP TUBING - REFER TO DETAIL 2 AND DETAILS 1.1.2, SHEET L-1 AND DETAIL 2. SHEET L-1

DRIP EMITTERS SHALL BE MANUFACTURED BY HUNTER OR APPROVED EQUAL. VALVE BOXES AND COVERS ARE BLACK IN COLOR AND INCLUDE LOCKING BOLTS (EXCLUDES F ROUND VALVE BOX PER SPECIFICATIONS).

NON-PRESSURE LATERAL LINE PIPING - SCHEDULE 40 PVC - 3/4" MINIMUM SIZE PIPING (NOTED IN INCHES) OTHER SIZES NOTED AS SHOWN ON PLAN - PROVIDE HUNTER MODEL #NY-10-25-CV- PROVIDE TWO (2) HOOD JOINT WATERTIGHT FITTINGS PER TREE - LOCATE EACH HOOD JOINT WATERTIGHT FITTING TO BE USED TO CONNECT EACH TREE TO THE NEAREST ROTARY SPRINKLER STATION PER PLAN - INSTALL BURNERS FOR TREES PER DETAIL 4, SHEET L-4 - REFER TO DETAIL 2, SHEET L-1

LATERAL LINE PIPING BEYOND WALKER PARK AREA, SCHEDULE 40 PVC - 3/4" MINIMUM SIZE (AS SHOWN ON DRAWINGS AS NOTED IN INCHES) OTHER SIZES NOTED AS SHOWN ON PLAN - PROVIDE HUNTER MODEL #NY-10-25-CV- PROVIDE TWO (2) HOOD JOINT WATERTIGHT FITTINGS PER TREE - LOCATE EACH HOOD JOINT WATERTIGHT FITTING TO BE USED TO CONNECT EACH TREE TO THE NEAREST ROTARY SPRINKLER STATION PER PLAN - INSTALL BURNERS FOR TREES PER DETAIL 4, SHEET L-4 - REFER TO DETAIL 2, SHEET L-1

VALVE CALLOUT LEGEND:

INDICATES IRRIGATION SPRINKLER CONTROLLER STATION NUMBER.

INDICATES ELECTRIC CONTROL VALVE SIZE, WHICH IS UNDEGRADED, 1" LOW.

INDICATES AREA OF COVERAGE PER STATION AND ESTIMATE OF DRIPLINE TUBING FOR ESTIMATE PURPOSES ONLY. CONTRACTOR TO PERFORM HIS OWN ESTIMATE FOR FINAL INSTALLATION. FOR TREE STATIONS NUMBER OF TREES ARE LISTED FOR REFERENCE.

INDICATES PRECIPITATION RATE.



SYMBOL	MANUFACTURER	MODEL NO.	DESCRIPTION	G.P.M.	P.A.L.	PATTERN	PRECIPITATION RATE	COLOR CODE	
	HUNTER	PRO-300-PS-60-CV	POP-UP ROTARY SPRINKLER	37	1.61	40	360°	0.28	GRAY
	HUNTER	PRO-300-PS-60-CV	POP-UP ROTARY SPRINKLER	37	1.61	40	360°	0.28	BLUE
	HUNTER	PRO-300-PS-60-CV	POP-UP ROTARY SPRINKLER	37	1.48	40	360°	0.27	BLACK
	HUNTER	PRO-300-PS-60-CV	POP-UP ROTARY SPRINKLER	37	0.77	40	180°	0.41	BLACK
	HUNTER	PRO-300-PS-60-CV	POP-UP ROTARY SPRINKLER	37	0.43	40	90°	0.41	BLACK

NOTES:

1. ALL SPARKERS FOR HEAD TO HEAD COVERAGE AND FOR ADJUST RADIUS CONTROL, ADVISORY TO NON-IRRIGATED AREA.

2. INSTALL ROTARY SPRINKLERS PER POP-UP DETAIL 4, L-1.2. WITHIN THE RANGE OF DECILES INDICATED BY MANUFACTURER.

3. ROTARY NOZZLES ARE HIGH EFFICIENCY NON-CLEAN IRRIE NOZZLES INSTALLED ON 1/2" BOLT POP-UP SPRINKLER BODIES.

**LANDSCAPE MAINTENANCE SCHEDULE:**

- LANDSCAPE SHALL BE MAINTAINED TO ENSURE WATER EFFICIENCY. A REGULAR MAINTENANCE SCHEDULE SHALL BE SUBMITTED WITH THE CERTIFICATE OF COMPLETION.
- A REGULAR MAINTENANCE SCHEDULE SHALL INCLUDE, BUT NOT BE LIMITED TO, ROUTINE INSPECTION, ADJUSTING, REPAIRS AND REPAIRS OF THE IRRIGATION SYSTEM AND ITS COMPONENTS, ADJUSTING AND RE-TRIMMING TURF AREAS, TOP-DRESSING TURF AREAS WITH COMPOST, REPLACING MULCH, FERTILIZING, PRUNING, WEEDING IN ALL LANDSCAPE AREAS, AND PROVIDING INSTRUCTIONS TO EMISSION DEVICES. OPERATION OF THE IRRIGATION SYSTEM OUTSIDE THE NORMAL WINTERING MONTHS IS ALLOWED FOR ADJUSTING AND SYSTEM MAINTENANCE.
- REPAIR OF ALL IRRIGATION EQUIPMENT SHALL BE DONE WITH THE ORIGINALLY INSTALLED COMPONENTS OR THEIR EQUIVALENTS OR WITH COMPONENTS WITH GREATER EFFICIENCY.

**SOIL SPECIFICATION/ANALYSIS SAMPLE:**

- PROVIDE SOIL SPECIFICATIONS REPORT FOR SOIL ANALYSIS. SOIL ANALYSIS SHOULD BE CONDUCTED BY A LICENSED SOIL ANALYST. SOIL INFORMATION MUST INCLUDE SOIL TEXTURE (% OF ORGANIC MATTER, NITROGEN RATE (OR ESTIMATED RANGE), PH, TOTAL SOLUBLE SALTS, SODIUM & CHLORIDE CONCENTRATIONS, INDICATE IF MULCH, SOIL AMENDMENTS OR OTHER MATERIAL WILL BE USED OR REQUIRED.

**IRRIGATION AUDIT SCHEDULE:**

- AT A MINIMUM, AUDITS SHALL BE IN ACCORDANCE WITH THE STATE OF CALIFORNIA LANDSCAPE AUDITOR HANDBOOK.
- AUDITS SHALL BE CONDUCTED BY A LICENSED IRRIGATION AUDITOR AT LEAST EVERY FIVE YEARS AND SUBMITTED TO THE LOCAL WATER PURVEYOR.
- HISTORICAL IRRIGATION SCHEDULES DOCUMENTING THE USE OF ONLY WEATHER SCHEDULING INFORMATION, AS REQUIRED WITH THE CITY COMPUTER CENTRAL CONTROL SYSTEM SHALL BE SUBMITTED IN LIEU OF IRRIGATION AUDIT TO VALIDATE AND VERIFY THAT THE IRRIGATION SYSTEM IS OPERATING AT OPTIMUM PERFORMANCE AS ORIGINALLY DESIGNED AND INSTALLED.

**GENERAL IRRIGATION NOTES:**

- INSTALL POP-UP SPRINKLER HEADS POSITIONED WITHIN GRASS, SHRUBS OR GROUND COVER AREAS WITH THE TOP OF SPRINKLER ABOVE FINISH GRADE AS SHOWN IN THE DETAILS.
- SET SPRINKLER HEADS PERPENDICULAR TO FINISH GRADE OF AREA TO BE IRRIGATED UNLESS INDICATED OTHERWISE ON DRAWINGS.
- WHEN VERTICAL OBSTRUCTIONS ARE INDICATED, THESE LIGHT POLES, ETC. INTERFERE WITH THE SPRINKLER HEAD PATTERNS OF COVERAGE. ADJUST SPRINKLER SYSTEM LAYOUT BY LAYOUT ADJUSTMENT TO AVOID OBSTRUCTIONS. SPRINKLER HEADS ON EACH SIDE OF OBSTRUCTION IN ORDER TO PROVIDE PROPER COVERAGE. PERFORM SPRINKLER LAYOUT ADJUSTMENT AT NO COST TO THE OWNER.
- SPRINKLER SYSTEM IS BASED ON MINIMUM PRESSURE, AND MAXIMUM FLOW IS ALLOWED BASED ON IRRIGATION DRAWINGS. REFER TO POINT-OF-CONNECTION NOTES, VERIFY PRESSURE AT IRRIGATION POINT-OF-CONNECTION TO OWNER'S AUTHORIZED REPRESENTATIVE REPORT DIFFERENCES BETWEEN WATER PRESSURE INDICATED ON DRAWINGS AND ACTUAL SITE PRESSURE. READING AT CONSTRUCTION, ASSUME FULL RESPONSIBILITY FOR REVISIONS.
- THIS DESIGN IS DIAGRAMMATIC. PIPING, VALVES, ETC. SHOWN WITHIN PAVED AREAS ARE FOR DESIGN CLARIFICATION ONLY. INSTALL PIPING AND IRRIGATION FACILITIES WITHIN PLANTING AREAS WHERE POSSIBLE. AVOID CONFLICTS BETWEEN SPRINKLER SYSTEM, LANDSCAPE PLANTING AND ARCHITECTURAL FEATURES.
- FLUSH AND ADJUST SPRINKLER HEADS FOR OPTIMUM PERFORMANCE. REVERSE OPERATOR TO OPEN VALVES, BLOWERS, WALLS, FINISHES AND BUILDINGS. SELECT THE MOST APPROPRIATE PANT CIRCLE PATTERN NOZZLE TO FIT THE SITE CONDITIONS AND THROTTLE THE FLOW CONTROL ADJUSTMENT AT EACH CONTROL VALVE TO OBTAIN OPTIMUM SPRINKLER HEAD PRESSURE.
- DO NOT MULTIPLY INSTALL SPRINKLER SYSTEM AS INDICATED ON DRAWINGS WHEN IT IS INDICATED IN THE FIELD THAT EXISTING CONDITIONS, GRADE DIFFERENCES IN AREAS DIMENSIONS, DIFFERENCES FOR REGRADING, IN THE EVENT THIS NOTIFICATION IS NOT FORWARDED, ASSUME FULL RESPONSIBILITY FOR REVISIONS.
- IT IS THE CONTRACTOR'S RESPONSIBILITY TO RESOLVE ISSUES WITH COVERAGE DIFFERENCES, WALL LEGS, ETC. COVERAGE WORK WITH GENERAL CONTRACTOR AND OTHER SUB-CONTRACTORS FOR THE INSTALLATION OF IRRIGATION SYSTEMS THROUGH WALLS, UNDER PAVEMENT AND STRUCTURES, ETC.
- CONTRACTOR IS RESPONSIBLE FOR THE INSTALLATION OF SUFFICIENT SIZES BLEEDERS FOR CONTROL, VALVES AND NON-PRESSURE LATERAL LINE PIPING UNDER PAVED AREAS. IN ADDITION TO CONTROL, VIBES AND LATERAL LINE PIPING BLEEDERS SHOWN ON THE DRAWINGS.
- INSTALL PIPING, RELATED MATERIALS AND EQUIPMENT AS SHOWN ON THE DRAWINGS. USE TEFLON TAPE ON PVC MALE PIPE THREADS, INCLUDING SPRINKLER SWING JOINT AND VALVE ASSEMBLIES. DO NOT USE PIPE DOPE.
- THE ESTABLISHMENT OF AUTOMATIC BROADCAST ADJUSTMENTS AND BASIC CONTROLLER PROGRAMMING IS THE RESPONSIBILITY OF THE CONTRACTOR. MAKE ARRANGEMENTS WITH AN IMPERIAL, TECHNICAL SERVICES OR GREEN PRODUCT SALES FIELD REPRESENTATIVE FOR A SITE VISIT OR FOR REQUESTED INFORMATION. CONTRACTOR SHALL PROVIDE ALL NECESSARY INFORMATION AND AUTOMATIC BROADCAST SCHEDULING PROGRAMMING TO THE CONTRACTOR. CONTRACTOR SHALL PROVIDE ALL NECESSARY INFORMATION AND AUTOMATIC BROADCAST SCHEDULING PROGRAMMING TO THE CONTRACTOR. CONTRACTOR SHALL PROVIDE ALL NECESSARY INFORMATION AND AUTOMATIC BROADCAST SCHEDULING PROGRAMMING TO THE CONTRACTOR. CONTRACTOR SHALL PROVIDE ALL NECESSARY INFORMATION AND AUTOMATIC BROADCAST SCHEDULING PROGRAMMING TO THE CONTRACTOR.
- MANHOLE PRESSURE TEST AFTER WELDED JOINTS HAVE CURED FOR AT LEAST 24 HOURS. LINES FLUSHED AND OUTLETS ARE CAPPED. THE SYSTEM SHALL BE TESTED UNDER NORMAL OPERATING CONDITIONS. CONTRACTOR SHALL PREPARE AND SUBMIT A REPORT ON THE RESULTS OF THE TESTS. CONTRACTOR SHALL PREPARE AND SUBMIT A REPORT ON THE RESULTS OF THE TESTS. CONTRACTOR SHALL PREPARE AND SUBMIT A REPORT ON THE RESULTS OF THE TESTS.

**DRIP IRRIGATION NOTES:**

- PROVIDE DRIPLINE EMITTER TUBING SYSTEM TO IRRIGATE EVERY PLANT WITHIN PLANTING AREAS AS SHOWN ON DRAWINGS.
- DRIPLINE IS SHOWN DIAGRAMMATICALLY FOR CLARITY. INSTALL DRIPLINE TUBING AND NON-PRESSURE LATERAL LEAD LINE PIPING IN LANDSCAPE AREAS AND ADJUST TO SELECTED PLANT MATERIAL, AS SHOWN IN DETAILS.
- DRIPLINE TUBING, AS SHOWN DIAGRAMMATICALLY ON PLANS WITH THE VARIOUS HATCHES INDICATING REPARATION FROM STATION ADJUSTMENT, CONNECTS TO THE NON-PRESSURE LATERAL LEAD LINE FROM THE ECV AND PRESSURE REGULATOR SERVING THE DESIGNATED DRIP AREA.
- DRIPLINE STATION CALLOUTS INDICATE THE APPROXIMATE SIZE OF THE DRIPLINE AREA OF COVERAGE ASSIGNED TO EACH VALVE. THE APPROXIMATE LENGTH OF DRIPLINE TUBING ASSIGNED TO EACH VALVE STATION IS PROVIDED FOR ESTIMATE PURPOSES ONLY. CONTRACTOR SHALL PROVIDE AND INSTALL THE REQUIRED AMOUNT OF DRIPLINE TUBING AS REQUIRED TO IRRIGATE THE ENTIRE PLANTING AREA WITH THE EMITTER SPACING AND DRIPLINE TUBING SPACING AS INDICATED IN THE EQUIPMENT LEGEND ON SHEET L-1.2.
- REFER TO PLANTING LEGEND FOR PLANT MATERIAL NAMES, ABBREVIATIONS, SPECIFIC SIZES, ON-CENTER SPACING, AND AESTHETIC INFORMATION.
- DO NOT INSTALL DRIPLINE TUBING UNDER PAVED SURFACES. CONNECT DRIPLINE TUBING TO SCHEDULE 40 PVC LATERAL LINE PIPING UNDER PAVED SURFACES THROUGH PLANTER WALLS. ADJUST DRIPLINE TUBING TO PVC PIPING AS REQUIRED WITH COMPRESSION ADAPTER FITTINGS.
- CONNECT DRIPLINE TUBING TO PRESSURE REGULATOR UNITS WITH SCHEDULE 40 PVC MALE ADAPTER FITTINGS AND COMPRESSION ADAPTER FITTINGS.
- PROVIDE COMPRESSION SERIES FITTINGS AND ADAPTERS FOR TUBING TO TUBING CONNECTIONS AND CONNECTIONS TO PVC TUBING AS INDICATED IN THE EQUIPMENT LEGEND.
- PROVIDE TWO (2) EMISSION OUTLET EMITTERS TO EACH LARGE SHRUB (5 CALLOUT), SPACED EQUALLY AT 12-INCHES CLEAR FROM STEEL. CONNECT DRIP EMITTERS TO DRIPLINE TUBING WITH BARBED ADAPTERS AT LOCATIONS WHERE REQUIRED.
- MANHOLE FOUR (4) EMISSION OUTLET EMITTERS TO EACH TREE, SPACED EQUALLY AT 12-INCHES CLEAR FROM TRUNK. CONNECT DRIP EMITTERS TO DRIPLINE TUBING WITH BARBED ADAPTERS AT LOCATIONS WHERE REQUIRED.

**VALVE CALLOUT LEGEND:**

SYMBOL	MANUFACTURER	MODEL NO.	DESCRIPTION
	EXISTING - WA	EXISTING - WA	EXISTING IRRIGATION SMART CONTROLLER MOUNTED IN FREE-STANDING FRONT ENTRY ENCLOSURE. COORDINATE WITH CITY OF LONG BEACH PUBLIC WORKS DEPARTMENT. PARK REC & MARINE, AND PARK MAINTENANCE STAFF
	EXISTING - WA	EXISTING - WA	EXISTING BACKFLOW PREVENTER ASSEMBLY - CONFORM SIZE IN FIELD - INCLUDES EXISTING COORDINATE WITH CITY OF LONG BEACH PUBLIC WORKS DEPARTMENT. ANY BACKFLOW RELATED WORK WITH CITY OF LONG BEACH PUBLIC WORKS DEPARTMENT. PARK REC & MARINE, AND PARK MAINTENANCE STAFF
	HUNTER	WA-1910-PS-40-ADU V-1019H-4C NY-100	DRIP ELECTRIC CONTROL VALVE ASSEMBLY - USE 1/2" SCHEDULE 40 PVC BALL VALVE AND ALGAE RESISTANT PVC SUPPLY TUBING INSTALL WITHIN 8" ROUND VALVE BOX - REFER TO DETAIL 1.1. SHEET L-1
	HUNTER	WA-1910-PS-40-ADU V-1019H-4C	ELECTRIC CONTROL VALVE ASSEMBLY - USE 1/2" SCHEDULE 40 PVC BALL VALVE AND ALGAE RESISTANT PVC SUPPLY TUBING INSTALL WITHIN 8" ROUND VALVE BOX - REFER TO DETAIL 1.1. SHEET L-1
	DOG	16-028	AIR / RELIEF VALVE - THREADED - 1/2" BORE - 1/2" NPT - INSTALL WITHIN 8" ROUND VALVE BOX - REFER TO DETAIL 1.1. SHEET L-1
	LASCO	NY-100	DRIP FLUSH OUT ASSEMBLY - 1/2" BORE - 1/2" NPT - COORDINATE ANY MAINLINE RELATED WORK WITH CITY OF LONG BEACH PUBLIC WORKS DEPARTMENT. PARK REC & MARINE, AND PARK MAINTENANCE STAFF
	LASCO	NY-100	DOMESTIC WATER SERVICE CONNECTION - ADDITIONAL INFORMATION NOTED WITH POC CALLOUT

EXISTING PRESSURE MAIN LINE PIPING - PROTECT IN PLACE - REFER TO DETAILS 1.1.2, SHEET L-1. COORDINATE ANY MAINLINE RELATED WORK WITH CITY OF LONG BEACH PUBLIC WORKS DEPARTMENT. PARK REC & MARINE, AND PARK MAINTENANCE STAFF

NON-PRESSURE LATERAL LINE PIPING - SCHEDULE 40 PVC - 3/4" MINIMUM SIZE PIPING (NOTED IN INCHES) OTHER SIZES NOTED AS SHOWN ON PLAN - REFER TO DETAIL 2. SHEET L-1

DRIP LINE SYSTEM - PRESSURE COMPENSATION DRIP EMITTERS - 45 GPH @ 15 INCHES O.D. POLYETHYLENE TUBING WITH WALL THICKNESS OF 0.15" WITH COMPRESSION-TYPE FITTINGS FOR 1/2" TEAL, TEAL, COPOLYMER AND PVC ADAPTERS - PROVIDE 3-INCH METAL INSTALLATION TO BE USED TO CONNECT TO DRIP TUBING - REFER TO DETAIL 2 AND DETAILS 1.1.2, SHEET L-1 AND DETAIL 2. SHEET L-1

DRIP EMITTERS SHALL BE MANUFACTURED BY HUNTER OR APPROVED EQUAL. VALVE BOXES AND COVERS ARE BLACK IN COLOR AND INCLUDE LOCKING BOLTS (EXCLUDES F ROUND VALVE BOX PER SPECIFICATIONS).

NON-PRESSURE LATERAL LINE PIPING - SCHEDULE 40 PVC - 3/4" MINIMUM SIZE PIPING (NOTED IN INCHES) OTHER SIZES NOTED AS SHOWN ON PLAN - PROVIDE HUNTER MODEL #NY-10-25-CV- PROVIDE TWO (2) HOOD JOINT WATERTIGHT FITTINGS PER TREE - LOCATE EACH HOOD JOINT WATERTIGHT FITTING TO BE USED TO CONNECT EACH TREE TO THE NEAREST ROTARY SPRINKLER STATION PER PLAN - INSTALL BURNERS FOR TREES PER DETAIL 4, SHEET L-4 - REFER TO DETAIL 2, SHEET L-1

LATERAL LINE PIPING BEYOND WALKER PARK AREA, SCHEDULE 40 PVC - 3/4" MINIMUM SIZE (AS SHOWN ON DRAWINGS AS NOTED IN INCHES) OTHER SIZES NOTED AS SHOWN ON PLAN - PROVIDE HUNTER MODEL #NY-10-25-CV- PROVIDE TWO (2) HOOD JOINT WATERTIGHT FITTINGS PER TREE - LOCATE EACH HOOD JOINT WATERTIGHT FITTING TO BE USED TO CONNECT EACH TREE TO THE NEAREST ROTARY SPRINKLER STATION PER PLAN - INSTALL BURNERS FOR TREES PER DETAIL 4, SHEET L-4 - REFER TO DETAIL 2, SHEET L-1

VALVE CALLOUT LEGEND:

INDICATES IRRIGATION SPRINKLER CONTROLLER STATION NUMBER.

INDICATES ELECTRIC CONTROL VALVE SIZE, WHICH IS UNDEGRADED, 1" LOW.

INDICATES AREA OF COVERAGE PER STATION AND ESTIMATE OF DRIPLINE TUBING FOR ESTIMATE PURPOSES ONLY. CONTRACTOR TO PERFORM HIS OWN ESTIMATE FOR FINAL INSTALLATION. FOR TREE STATIONS NUMBER OF TREES ARE LISTED FOR REFERENCE.

INDICATES PRECIPITATION RATE.



SYMBOL	MANUFACTURER	MODEL NO.	DESCRIPTION	G.P.M.	P.A.L.	PATTERN	PRECIPITATION RATE	COLOR CODE	
	HUNTER	PRO-300-PS-60-CV	POP-UP ROTARY SPRINKLER	37	1.61	40	360°	0.28	GRAY
	HUNTER	PRO-300-PS-60-CV	POP-UP ROTARY SPRINKLER	37	1.61	40	360°	0.28	BLUE
	HUNTER	PRO-300-PS-60-CV	POP-UP ROTARY SPRINKLER	37	1.48	40	360°	0.27	BLACK
	HUNTER	PRO-300-PS-60-CV	POP-UP ROTARY SPRINKLER	37	0.77	40	180°	0.41	BLACK
	HUNTER	PRO-300-PS-60-CV	POP-UP ROTARY SPRINKLER	37	0.43	40	90°	0.41	BLACK

NOTES:

1. ALL SPARKERS FOR HEAD TO HEAD COVERAGE AND FOR ADJUST RADIUS CONTROL, ADVISORY TO NON-IRRIGATED AREA.

2. INSTALL ROTARY SPRINKLERS PER POP-UP DETAIL 4, L-1.2. WITHIN THE RANGE OF DECILES INDICATED BY MANUFACTURER.

3. ROTARY NOZZLES ARE HIGH EFFICIENCY NON-CLEAN IRRIE NOZZLES INSTALLED ON 1/2" BOLT POP-UP SPRINKLER BODIES.



**Camp Shiwaka**  
At DeForest Park  
625 DeForest Ave  
Long beach, ca 90805

1	2	3	4	5	6	7	8	9	10	11	12	13	14	15	16	17	18	19	20	21	22	23	24	25	26	27	28	29	30	31	32	33	34	35	36	37	38	39	40	41	42	43	44	45	46	47	48	49	50	51	52	53	54	55	56	57	58	59	60	61	62	63	64	65	66	67	68	69	70	71	72	73	74	75	76	77	78	79	80	81	82	83	84	85	86	87	88	89	90	91	92	93	94	95	96	97	98	99	100
---	---	---	---	---	---	---	---	---	----	----	----	----	----	----	----	----	----	----	----	----	----	----	----	----	----	----	----	----	----	----	----	----	----	----	----	----	----	----	----	----	----	----	----	----	----	----	----	----	----	----	----	----	----	----	----	----	----	----	----	----	----	----	----	----	----	----	----	----	----	----	----	----	----	----	----	----	----	----	----	----	----	----	----	----	----	----	----	----	----	----	----	----	----	----	----	----	----	----	-----

1204  
IRRIGATED LANDING AND  
AREAS









Category	Quantity	Unit Price	Total Price	Notes
...	...	...	...	...
<b>Subtotal</b>			<b>44,170</b>	
<b>Grand Total</b>			<b>100,000%</b>	

**Regulation System 'A'**

...

...

...

Category	Quantity	Unit Price	Total Price
...	...	...	...
<b>Subtotal</b>			<b>44,170</b>

...

...

...

Category	Quantity	Unit Price	Total Price
...	...	...	...
<b>Subtotal</b>			<b>44,170</b>

...

...

...



JDC  
 1000 S. ...  
 ...



**Camp Shiwaka**  
 At DeForest Park  
 6255 DeForest Ave  
 Long Beach, CA 90805

Category	Quantity	Unit Price	Total Price
...	...	...	...
<b>Subtotal</b>			<b>44,170</b>









JDC  
 1000 S. GATEWAY AVENUE  
 SUITE 100  
 SAN ANTONIO, TEXAS 78205  
 TEL: 214.343.2222  
 FAX: 214.343.2223  
 WWW.JDCINC.COM



Camp Shiwaka  
 At DeForest Park  
 6255 DeForest Ave  
 Long beach, ca 90805

DATE	10/20/11
PROJECT	IRRIGATION PLAN
SCALE	1" = 20'

1284

IRRIGATION PLAN

L-5

**ROTOR SPRINKLER LEGEND:**

SYMBOL	MANUFACTURER	MODEL NO.	DESCRIPTION	NOZZLE	RADIUS	G.P.A.	P.S.I.	PATTERN	PROSP RATE	COLOR CODE
H	RAIN BIRD	500-PC-8S	8" POP-UP ROTOR SPRINKLER	810	45'	12.8	45	360°	0.77"	DARK BROWN
H	RAIN BIRD	500-PC-8S	8" POP-UP ROTOR SPRINKLER	810	45'	6.8	45	180°	0.77"	GREEN
H	RAIN BIRD	500-PC-8S	8" POP-UP ROTOR SPRINKLER	810	45'	4.3	45	120°	0.87"	LIGHT BLUE
G	RAIN BIRD	500-PC-2S	2" POP-UP ROTOR SPRINKLER	84	40'	3.3	40	90°	0.79"	BLACK
H	RAIN BIRD	500-PC-AM-8S	8" POP-UP ROTOR SPRINKLER	500-APR-25-H	35'	3.81	45	180°	0.67"	BEGE
F	RAIN BIRD	500-PC-AM-8S	8" POP-UP ROTOR SPRINKLER	500-APR-25-F	35'	5.78	45	360°	0.67"	GREEN
H	RAIN BIRD	500-PC-AM-8S	8" POP-UP ROTOR SPRINKLER	500-APR-25-H	35'	2.38	45	180°	0.67"	GREEN
H	RAIN BIRD	500-PC-AM-8S	8" POP-UP ROTOR SPRINKLER	500-APR-25-H	35'	1.98	45	120°	0.59"	GREEN
H	RAIN BIRD	500-PC-AM-8S	8" POP-UP ROTOR SPRINKLER	500-APR-25-H	35'	1.40	45	90°	0.59"	GREEN
H	RAIN BIRD	500-PC-AM-8S	8" POP-UP ROTOR SPRINKLER	500-APR-25-H	35'	1.98	45	180°	0.81"	RED
H	RAIN BIRD	500-PC-AM-8S	8" POP-UP ROTOR SPRINKLER	500-APR-25-T	25'	1.38	45	120°	0.64"	RED
H	RAIN BIRD	500-PC-AM-8S	8" POP-UP ROTOR SPRINKLER	500-APR-25-Q	25'	1.00	45	90°	0.67"	RED

NOTE: ADJUST ROTOR SPRINKLERS FOR HEAD TO HEAD COVERAGE AND ADJUST RADIUS CONTROL TO AVOID OVERSPRAY OR TO UNDERSPRAY. FENCING, BUILDINGS, ETC. CAUTION: DO NOT REDUCE RADIUS MORE THAN 30% OF GREATER RADIUS REDUCTION IS NEEDED PROVIDE SUBSTITUTE NOZZLE.

INSTALL ROTOR SPRINKLERS PER DETAIL 1 ON SHEET L-4

1. ARC PATTERN OF ROTORS ARE ADJUSTABLE WITHIN THE RANGE OF DEGREES INDICATED BY THE MANUFACTURER.

2. ROTOR ARE HIGH EFFICIENCY, 8" WHEELS WITH NOZZLES INSTALLED ON 1" WHEEL POP-UP ROTOR SPRINKLER BODIES FOR FALLOW BOARDS AND 1" WHEEL POP-UP ROTOR SPRINKLER BODIES FOR TURF GRASS. NOTE: SWING ARM ASSEMBLIES TO BE MINIMUM 1" IN SIZE FOR FALLOW BOARDS AND MINIMUM 3/4" IN SIZE FOR TURF GRASS.

**ROTARY SPRINKLER LEGEND:**

SYMBOL	MANUFACTURER	MODEL NO.	DESCRIPTION	NOZZLE	RADIUS	G.P.A.	P.S.I.	PATTERN	PROSP RATE	COLOR CODE
20	RAIN BIRD	100-SAM-8S	8" POP-UP ROTARY SPRINKLER	R-AM-8S-80	17-24'	3.48	45	360°	0.87"	RED/RED
20	RAIN BIRD	100-SAM-8S	8" POP-UP ROTARY SPRINKLER	R-AM-8S	17-24'	1.98	45	180°	0.81"	RED/BLACK
20	RAIN BIRD	100-SAM-8S	8" POP-UP ROTARY SPRINKLER	R-AM-8S	17-24'	0.84	45	90°	0.81"	RED/BLACK
F	RAIN BIRD	100-SAM-8S	8" POP-UP ROTARY SPRINKLER	R-AM-8S-80	17-18'	1.98	45	360°	0.67"	RED/BLACK
F	RAIN BIRD	100-SAM-8S	8" POP-UP ROTARY SPRINKLER	R-AM-8S	17-18'	1.01	45	180°	0.64"	RED/BLACK
H	RAIN BIRD	100-SAM-8S	8" POP-UP ROTARY SPRINKLER	R-AM-8S	17-18'	0.50	45	90°	0.64"	RED/BLACK
H	RAIN BIRD	100-SAM-8S	8" POP-UP ROTARY SPRINKLER	R-AM-8S	6-14'	0.83	45	180°	0.81"	BLUE/BLACK
H	RAIN BIRD	100-SAM-8S	8" POP-UP ROTARY SPRINKLER	R-AM-8S	6-14'	0.33	45	90°	0.81"	BLUE/BLACK
LCS	RAIN BIRD	100-SAM-8S	8" POP-UP ROTARY SPRINKLER	R-AM-8S	5 X 15'	0.24	45	STRIP	0.67"	GRAY/BLACK
SS	RAIN BIRD	100-SAM-8S	8" POP-UP ROTARY SPRINKLER	R-AM-8S	5 X 30'	0.48	45	STRIP	0.67"	BLACK/BLACK

NOTE: ADJUST ROTARY SPRINKLERS FOR HEAD TO HEAD COVERAGE AND ADJUST RADIUS CONTROL TO AVOID OVERSPRAY OR TO UNDERSPRAY. CAUTION: DO NOT REDUCE RADIUS MORE THAN 30% OF GREATER RADIUS REDUCTION IS NEEDED PROVIDE SUBSTITUTE NOZZLE.

INSTALL ROTARY SPRINKLERS PER DETAIL 1 ON SHEET L-4

1. PART CIRCLE NOZZLES ON POP-UP SPRINKLER BODIES ALONG PERIMETER EDGE PER POPUP DETAIL 2, SHEET L-4.

2. NOTE: SWING ARM ASSEMBLIES TO BE MINIMUM 1" IN SIZE FOR FALLOW BOARDS AND MINIMUM 3/4" IN SIZE FOR TURF GRASS.

3. MINIMUM LATERAL LINE SIZE IS 3/4" SCHEDULE 40

**IRRIGATION SYSTEM DESCRIPTION**

1. REHABILITATED LANDSCAPE AREAS ARE IRRIGATED BY A NEW IRRIGATION SYSTEM UTILIZING SUB-SURFACE DRAINAGE, ROTOR SPRINKLERS, ROTARY NOZZLE AND LOW FLOW SUB-SURFACE TRICKLE EMITTERS ON SEPARATE DEDICATED CONTROL VALVES WITH PRESSURE REGULATION FOR AUTOMATIC IRRIGATION.

2. DOMESTIC WATER SUPPLIES THE IRRIGATION SYSTEM AND THE PARK SITE ON AN EXISTING WATER METER AND BACKFLOW PREVENTER. THE EXISTING IRRIGATION MAINLINE IS TO LEAVE AND WILL BE PROTECTED IN PLACE.

3. THE EXISTING IRRIGATION CONTROLLER IS BEING REPLACED AS PART OF A SEPARATE PROJECT WITH A WEATHER BASED SMART IRRIGATION CONTROLLER WITH A TWO WIRE SYSTEM. NEW WIRES WILL BE REQUIRED TO CONNECT ALL NEW IRRIGATION CONTROL VALVES TO THE TWO WIRE SYSTEM WITH 1/2 INCH 2 WIRE CABLES.

**EXISTING IRRIGATION CONTROLLER NOTES:**

1. THE EXISTING IRRIGATION CONTROLLER IS BEING REPLACED AS PART OF A SEPARATE PROJECT WITH A WEATHER BASED SMART IRRIGATION CONTROLLER WITH A TWO WIRE SYSTEM. NEW WIRES WILL BE REQUIRED TO CONNECT ALL NEW IRRIGATION CONTROL VALVES TO THE TWO WIRE SYSTEM WITH 1/2 INCH 2 WIRE CABLES.

2. THE EXISTING IRRIGATION CONTROLLER IS BEING REPLACED AS PART OF A SEPARATE PROJECT WITH A WEATHER BASED SMART IRRIGATION CONTROLLER WITH A TWO WIRE SYSTEM. NEW WIRES WILL BE REQUIRED TO CONNECT ALL NEW IRRIGATION CONTROL VALVES TO THE TWO WIRE SYSTEM WITH 1/2 INCH 2 WIRE CABLES.

**EXISTING IRRIGATION POINT OF CONNECTION NOTE:**

1. THE EXISTING IRRIGATION POINT OF CONNECTION IS BEING REPLACED AS PART OF A SEPARATE PROJECT WITH A WEATHER BASED SMART IRRIGATION CONTROLLER WITH A TWO WIRE SYSTEM. NEW WIRES WILL BE REQUIRED TO CONNECT ALL NEW IRRIGATION CONTROL VALVES TO THE TWO WIRE SYSTEM WITH 1/2 INCH 2 WIRE CABLES.



10/20/11

1284

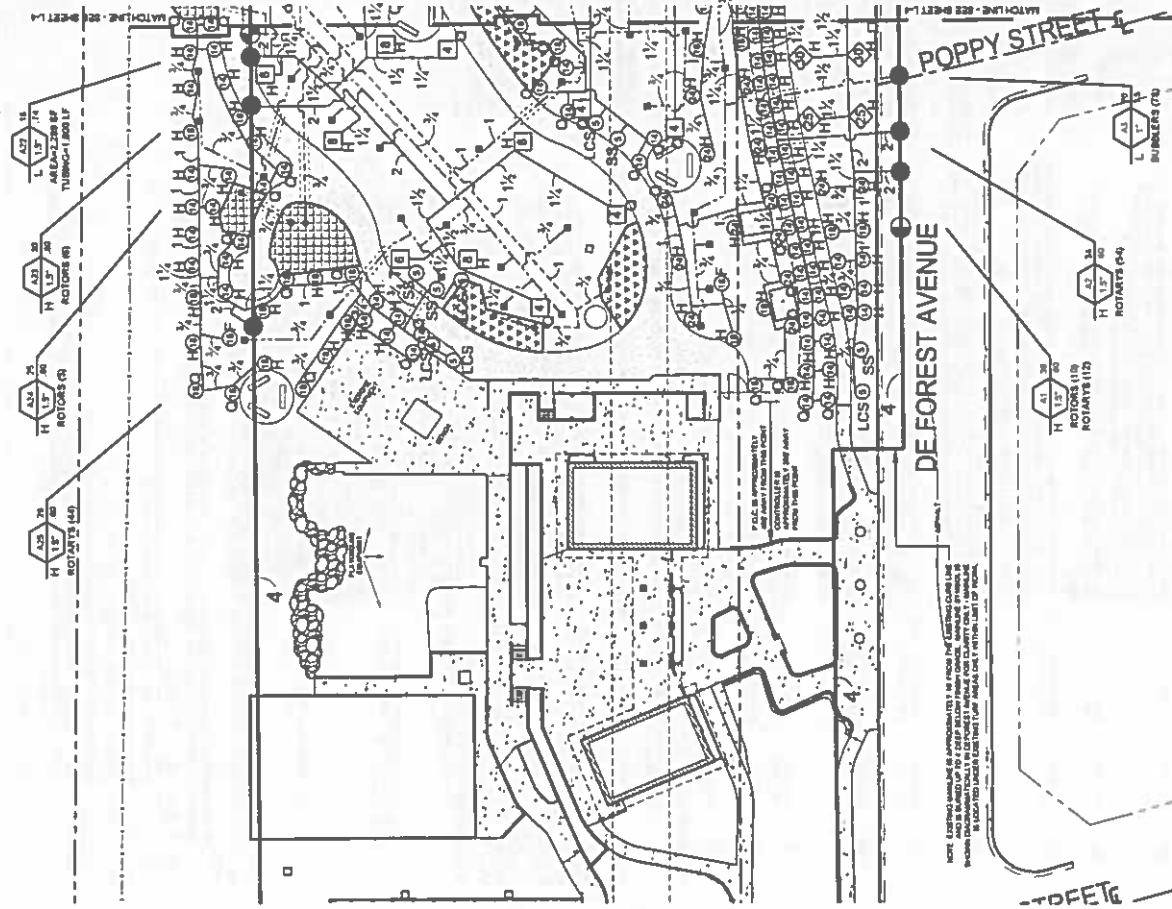
IRRIGATION PLAN

SCALE: 1" = 20'

1284

IRRIGATION PLAN

L-5



**LATERAL LINE SIZING TABLE:**

1/4" DIAMETER	100 FT	1.00
1/4" DIAMETER	200 FT	1.00
1/4" DIAMETER	300 FT	1.00
1/4" DIAMETER	400 FT	1.00
1/4" DIAMETER	500 FT	1.00
1/4" DIAMETER	600 FT	1.00
1/4" DIAMETER	700 FT	1.00
1/4" DIAMETER	800 FT	1.00
1/4" DIAMETER	900 FT	1.00
1/4" DIAMETER	1000 FT	1.00
1/4" DIAMETER	1100 FT	1.00
1/4" DIAMETER	1200 FT	1.00
1/4" DIAMETER	1300 FT	1.00
1/4" DIAMETER	1400 FT	1.00
1/4" DIAMETER	1500 FT	1.00
1/4" DIAMETER	1600 FT	1.00
1/4" DIAMETER	1700 FT	1.00
1/4" DIAMETER	1800 FT	1.00
1/4" DIAMETER	1900 FT	1.00
1/4" DIAMETER	2000 FT	1.00

NOTE: ALL LATERAL LINE SIZES ARE BASED ON A 100' SPACING BETWEEN LATERAL LINES. ALL LATERAL LINE SIZES ARE BASED ON A 100' SPACING BETWEEN LATERAL LINES. ALL LATERAL LINE SIZES ARE BASED ON A 100' SPACING BETWEEN LATERAL LINES.











Camp Shiwaka  
At DeForest Park  
6255 DeForest Ave  
long beach, ca 90805

1	2	3	4	5	6	7	8	9	10	11	12	13	14	15	16	17	18	19	20	21	22	23	24	25	26	27	28	29	30	31	32	33	34	35	36	37	38	39	40	41	42	43	44	45	46	47	48	49	50	51	52	53	54	55	56	57	58	59	60	61	62	63	64	65	66	67	68	69	70	71	72	73	74	75	76	77	78	79	80	81	82	83	84	85	86	87	88	89	90	91	92	93	94	95	96	97	98	99	100
---	---	---	---	---	---	---	---	---	----	----	----	----	----	----	----	----	----	----	----	----	----	----	----	----	----	----	----	----	----	----	----	----	----	----	----	----	----	----	----	----	----	----	----	----	----	----	----	----	----	----	----	----	----	----	----	----	----	----	----	----	----	----	----	----	----	----	----	----	----	----	----	----	----	----	----	----	----	----	----	----	----	----	----	----	----	----	----	----	----	----	----	----	----	----	----	----	----	----	-----

**LEGEND**

1. BASE SURFACE ROOT ZONE WATERING SYSTEM WITH FLOOD BUBBLER NOZZLE AND BRASS JOINT ASSEMBLY - ALIGN SPRINKLERS ON OPPOSITE SIDES OF TREE, TYPICAL.
2. LATERAL PIPE - SCHEDULE 40 PVC - 3/4" MINIMUM SIZE.
3. TREE.
4. LATERAL LINE PIPING FROM ELECTRIC CONTROL VALVE.
5. ROOT BALL.

**NOTES**

1. PRESSURE COMPENSATING FLOOD BUBBLERS INCLUDED IN SYSTEM.
2. PROVIDE EACH ROOT ZONE WATERING SYSTEM WITH USER RETAILED FABRIC SLEEVE.

**LEGEND:**

1. POP-UP SPRAY HEAD.
2. SCHEDULE 40 PVC 1 1/2" ELL.
3. SCHEDULE 40 PVC 1 1/2" SHORT ELL.
4. SCHEDULE 40 PVC 1 1/2" SHORT ELL.
5. SCHEDULE 40 PVC LATERAL LINE PIPE AND FITTING.
6. FINISH GRADE.
7. ADJACENT FINISH GRADE OR CURB.
8. INSTALLED TOP OF SPRAY HEAD 4" ABOVE FINISH GRADE IN TURF AREAS AND SET 8" ABOVE FINISH GRADE IN PAVED AREAS.
9. INSTALLED TOP OF SPRAY HEAD 4" ABOVE FINISH GRADE IN TURF AND 2-INCHES ABOVE FINISH GRADE IN PAVED AREAS.
10. GROUND IN TURF AND GROUND COVER PLANTING AREAS.

**NOTE:**

1. USE TIGHTEN LIME ON INCREASED FITTINGS.

**NOTE:**

1. LOCATE HEAD 2" TO 6" FROM RAILS, DECOMPOSED GRANITE, HARDSCAPING, MOW STRIPS, AND EDGES OF LAWN. LOCATE 2" AWAY FROM STREET CURBS AND PARKING LOT EDGES.
2. LOCATE HEAD 2" AWAY FROM CURBS.
3. INSTALL SPRAY HEADS AT SIZES NO SMALLER THAN SIZES ON ROTORS USED.

**1 ROTOR POP-UP**

**2 POP-UP SPRAY HEAD**

**3 TREE SPRINKLER LAYOUT**

**LEGEND:**

1. TWO WIRE TWO STATION DECODER.
2. RED AND BLUE WIRES TO 3-WIRE CABLE (MATCH COLORS).
3. OUTPUT A - BLACK WIRES TO SOLENOID.
4. OUTPUT B - GREEN WIRES TO SOLENOID.
5. GREEN WIRE TO GROUND ROD WHERE WELDED. GROUND ROD LOCATIONS 1 AT CONTROLLER, 1 EVERY 200 FEET ON THE NEXT CLOSEST DECODER, AND 1 AT END OF EACH TWO WIRE CABLE.
6. #12 BRASS COPPER GROUND WIRE.
7. #12 BRASS COPPER GROUND ROD.
8. DRILLING HOLES MAY BE USED TO MOUNT DECODER TO VALVE BOX LID ON SIDE OF VALVE.
9. MAXIMUM 100 FEET OF 1/4 GAUGE WIRE FROM DECODER TO SOLENOID.
10. IF WIRES NOT USED THE ENDS MUST BE WATER PROOFED.
11. USE 3M SCOTCHCAST EPOXY-4 EPOXY ADHESIVE FOR ALL WIRE SPLICES.

**4 2 WIRE DECODER**



