



CITY OF LONG BEACH

DEPARTMENT OF PUBLIC WORKS

C-18

333 West Ocean Boulevard • Long Beach, CA 90802 • (562) 570-6383 • FAX (562) 570-6012

September 19, 2006

HONORABLE MAYOR AND CITY COUNCIL
City of Long Beach
California

RECOMMENDATION:

Authorize the City Attorney to accept an easement deed for additional sidewalk area at the southwest corner of Seventh Street and Redondo Avenue. (District 2)

DISCUSSION

It is the goal of the Department of Public Works to bring public streets, alleys and sidewalks up to the standards established in the City's General Plan. When significant new development is proposed, the public rights-of-way adjacent to the site are reviewed for sufficiency. As a part of the construction of a 2,500-square foot commercial building at 665 Redondo Avenue, the dedication of additional sidewalk in the vicinity of a curb ramp is recommended. The dedication and improvement of the area shown on the attached Exhibit A will provide the flat path around the curb ramp needed to meet ADA requirements.

The developer of the subject property agreed to development conditions that include the above-described dedication of public sidewalk area. This matter was reviewed by Deputy City Attorney Lisa Peskay Malmsten on August 28, 2006. In conformance with the California Environmental Quality Act, Categorical Exemption No. CE-05-44 was issued for this project.

TIMING CONSIDERATIONS

City Council action on this matter is not time critical.

FISCAL IMPACT

A document processing fee of \$250 was paid by the developer and deposited in the General Fund (GP) in the Department of Public Works (PW).

ADMINISTRATION,
PLANNING & FACILITIES
333 W. Ocean Blvd., 9th Floor
Long Beach, CA 90802
Ph. (562) 570-6383
Fax (562) 570-6012

AIRPORT
4100 Donald Douglas Dr.
Long Beach, CA 90808
Ph. (562) 570-2600
Fax (562) 570-2601

ENGINEERING & STREET
MAINTENANCE
333 W. Ocean Blvd., 9th Floor
Long Beach, CA. 90802
Ph. (562) 570-6634
Fax (562) 570-6012

ENVIRONMENTAL
SERVICES
2929 E. Willow Street
Long Beach, CA 90806
Ph. (562) 570-2850
Fax (562) 570-2861

FLEET SERVICES
2600 Temple Avenue
Long Beach, CA 90806
Ph. (562) 570-5400
Fax (562) 570-5414

TRAFFIC &
TRANSPORTATION
333 W. Ocean Blvd., 10th Floor
Long Beach, CA 90802
Ph. (562) 570-6331
Fax (562) 570-7161

SUGGESTED ACTION:

Approve recommendation.

Respectfully submitted,




CHRISTINE F. ANDERSEN
DIRECTOR OF PUBLIC WORKS

GMM:SC:km
PICL\ RW ded 665 Redondo CL.doc

Attachment

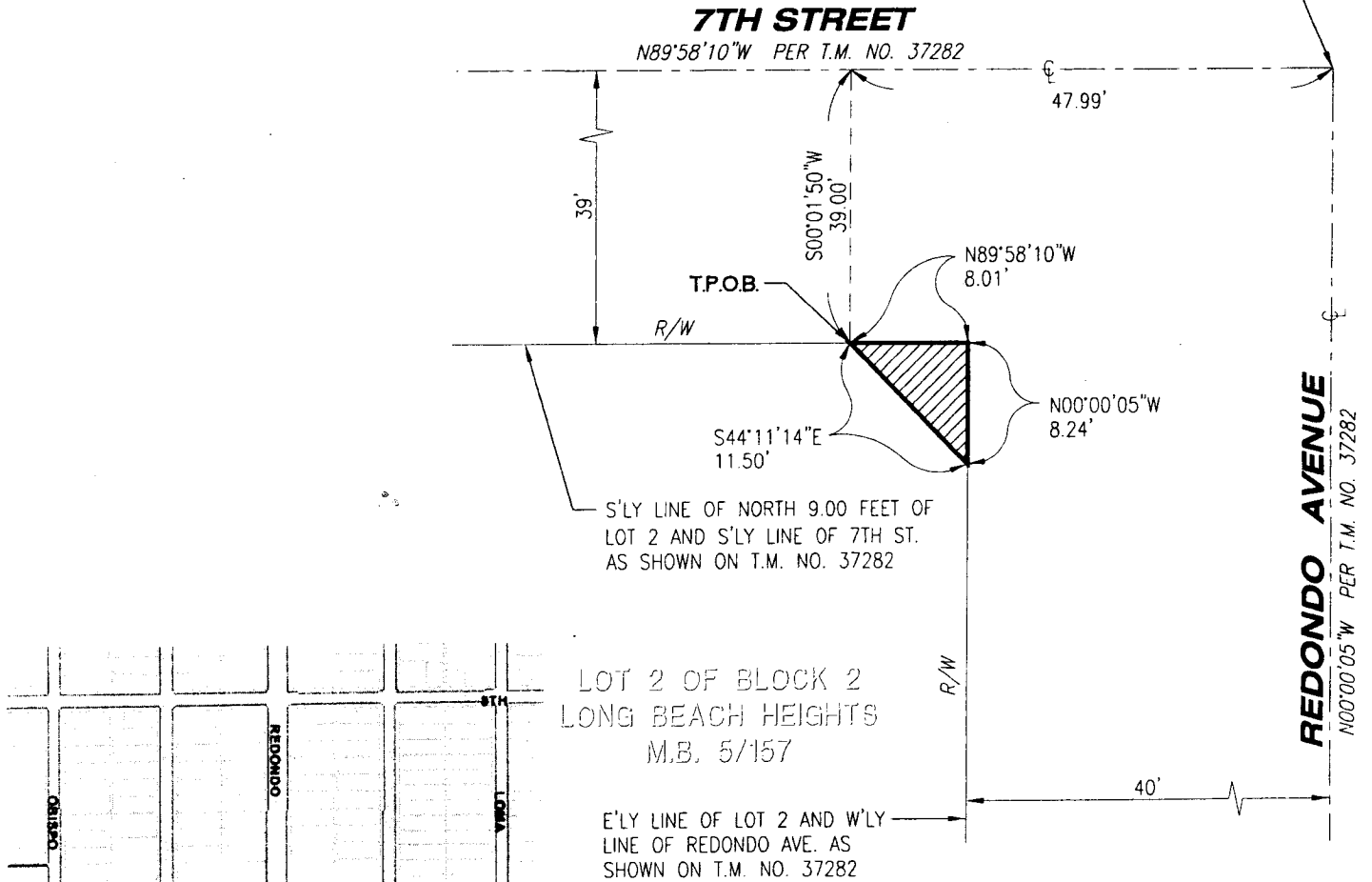
APPROVED:




GERALD R. MILLER
CITY MANAGER

SKETCH NO. 1999
SKETCH SHOWING A PORTION OF LOT 2, BLOCK 2, LONG BEACH
HEIGHTS, DEDICATED TO THE CITY OF LONG BEACH FOR
SIDEWALK PURPOSES.

P.O.B.
 CL INTERSECTION OF 7TH ST. AND
 REDONDO AVE. AS SHOWN ON T.M.
 NO. 37282 REC. 954/92-93 M.R.



LEGEND:

 DEDICATED HEREON



SCALE 1"=10'

