



# CITY OF LONG BEACH

DEPARTMENT OF PARKS, RECREATION & MARINE

2760 N. Studebaker Road, Long Beach, CA 90815-1697  
(562) 570-3100 • FAX (562) 570-3109  
www.LBParks.org



December 22, 2015

HONORABLE MAYOR AND CITY COUNCIL  
City of Long Beach  
California

## RECOMMENDATION:

Authorize the City Manager to execute any documents necessary to accept a total of \$25,000 in grant funding, awarded by the Long Beach Navy Memorial Heritage Association, to develop Phase I of a preservation plan for the Recreation Park Bandshell; and

Increase appropriations in the Capital Projects Fund (CP) in the Parks, Recreation and Marine Department (PR) by \$25,000. (District 3)

## DISCUSSION

The Recreation Park Bandshell (Bandshell) was designed by City of Long Beach engineer, G. W. Ferris, and constructed in the Spanish Baroque Revival Style in 1929. The Bandshell was frequently used for municipal, political and social events, including school graduations, presidential speeches, Long Beach Municipal Band performances, and the popular Iowa picnics. In 1991, the Bandshell was designated a City Historic Landmark (Attachment) – Long Beach Municipal Code, Section 16.52.740.

While the Bandshell was used extensively in the past, the elements, vandalism and general wear and tear have taken their toll and the Bandshell is in a state of disrepair and continued deterioration. The carved wooden arbors that once flanked the Bandshell eventually deteriorated and were removed for safety reasons. Weathering continues to deteriorate the ornate plasterwork and the Bandshell facade. Historic lighting was removed and replaced with contemporary fixtures. The 1920s era plumbing and electrical systems are outdated and worn and need replacement.

However, before any restoration process can begin, a detailed preservation plan should be developed to ensure the Bandshell is restored to its original design. The preservation plan will serve as a guideline document for the restoration process and for the long-term maintenance of the Bandshell.

In the fall of 2014, the Department of Parks, Recreation and Marine (PRM) submitted an application to the Long Beach Navy Memorial Heritage Association requesting \$50,000 in grant funding to develop the preservation plan. In March 2015, PRM was notified of an award of \$25,000. In consultation with an architect who specializes in the restoration of historic structures, a two-phase plan was developed to accommodate the reduced budget. Phase I of the preservation plan will focus on the identification, documentation, and assessment of the Bandshell. Once Phase I has been completed, PRM expects to seek future grant funding for Phase II of the preservation plan, which will include the preparation of a comprehensive preservation plan and the design of development-level drawings.

This matter was reviewed by Deputy City Attorney Linda T. Vu on November 24, 2015 and by Budget Management Officer Victoria Bell on December 7, 2015.

TIMING CONSIDERATIONS

City Council action is requested on December 22, 2015, in order to allow execution of the grant agreement and complete the project by the grant expiration date of March 31, 2016.

FISCAL IMPACT

As the grant award is currently unbudgeted, an appropriation increase in the amount of \$25,000 is requested in the Capital Projects Fund (CP) in the Parks, Recreation and Marine Department (PR) for Phase I of the preservation plan. No matching funds or in-kind services are required. The total cost of Phase I and II of the preservation plan is estimated at \$50,000. Once Phase I has been completed, PRM will seek additional grant funding to complete Phase II. The recommended action will result in a positive impact on jobs, although the exact number is unknown at this time.

SUGGESTED ACTION:

Approve recommendation.

Respectfully submitted,



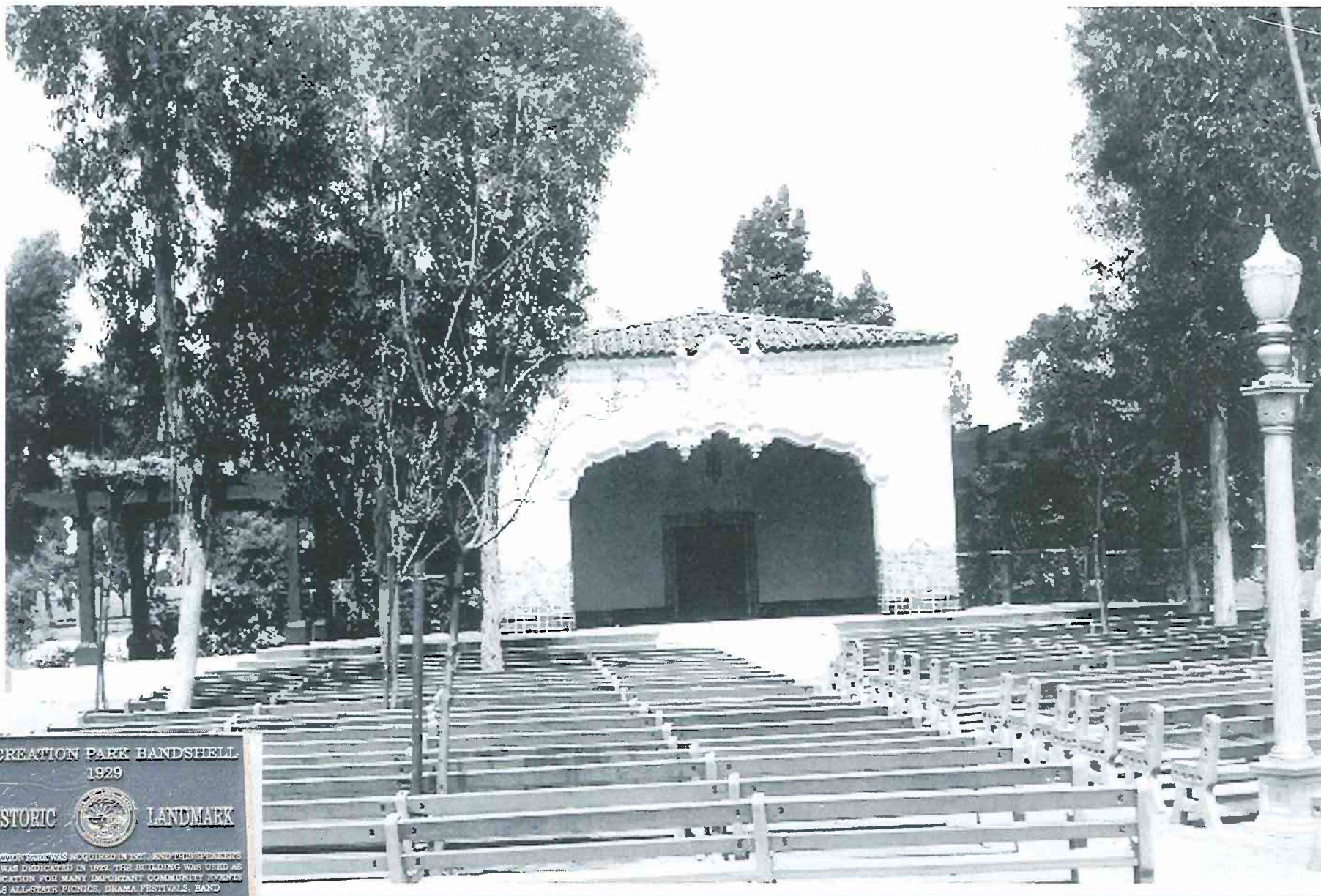
STEPHEN SCOTT  
INTERIM DIRECTOR OF PARKS, RECREATION AND MARINE

SS:AGM:MR:lh  
Attachment

APPROVED:



PATRICK H. WEST  
CITY MANAGER



RECREATION PARK BANDSHELL  
1929

HISTORIC  LANDMARK

RECREATION PARK WAS ACQUIRED IN 1927, AND THIS SPEAKERS STAND WAS DEDICATED IN 1929. THE BUILDING WAS USED AS THE LOCATION FOR MANY IMPORTANT COMMUNITY EVENTS SUCH AS ALL-STATE PICNICS, DRAMA FESTIVALS, BAND CONCERTS, SCHOOL GRADUATIONS, AND TEMPORARY CLASSROOMS AFTER THE '33 EARTHQUAKE. ITS BEAUTIFUL SPANISH BAROQUE DESIGN CONTAINS MAJESTIC AND RICH ORNAMENT.

CITY OF LONG BEACH  
CULTURAL HERITAGE COMMISSION  
DECLARED NOVEMBER 19, 1991

### Recreation Park Bandshell

*Undated historic photograph. Note the wooden arbors that flank the Bandshell.*