



Long Beach Early Childhood Education Centralized Enrollment System: The Early Learning Hub

Agenda

- Background
- Hub goals and outcomes
- How the Hub works
- Progress, Opportunities, & Next Steps

Presented by :

Christina Boatwright

DHHS Acting Collective Impact Bureau Manager

Karissa Selvester

Mayor's Fund for Education Executive Director

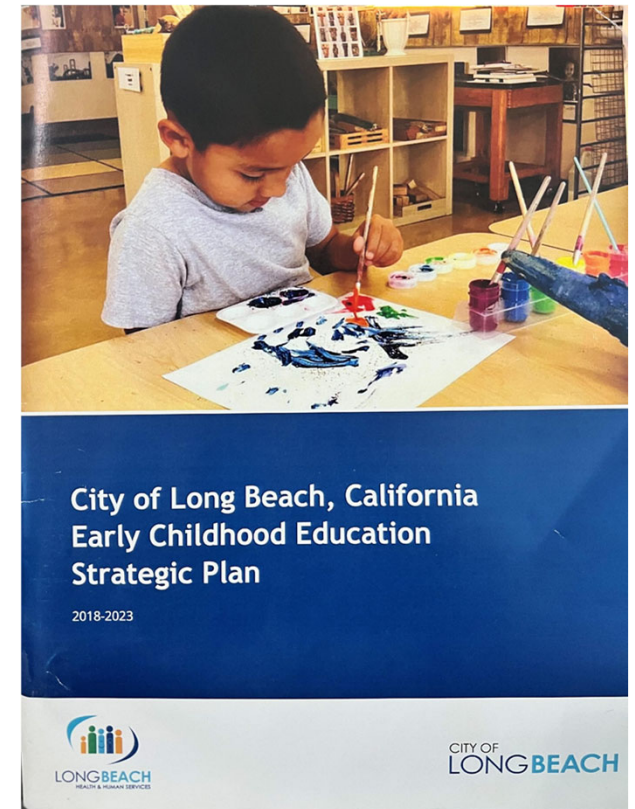


Early Learning Hub

2

City ECE Prioritization Background

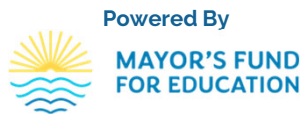
- 2018 Adoption of Long Beach Early Childhood Education (ECE) Strategic Plan
 - Goal 2: Increase access to and affordability of infant through Pre-K early care and education services
 - Objective: Creation of a centralized enrollment system
- 2020 Covid-19 Response & Recovery
 - Childcare and ECE deemed essential
 - City investments to ECE industry via CARES Act and Long Beach Recovery Act
- Childcare and ECE Prioritized in:
 - Long Beach Economic Blueprint
 - Long Beach 2030 City Vision



Childcare System-Development Opportunity via Long Beach Recovery Act Funding

- ~ \$2.48 million allocated to Early Childhood Education, Childcare, & Literacy Development
- \$600,000 identified to support the stabilization of ECE industry and development of a community-led centralized enrollment system
- Mayor's Fund for Education identified as ideal organization to lead the effort
 - Already a trusted partner by ECE providers and LBUSD
 - Proven track record via CARES Act response contracts (thousands of infant care supplies distributed)
 - Expertise and history of successful implementation of community-wide shared-services programs, working with diverse stakeholders
 - Capable of centralized administration in collaboration with City, LBUSD, ECE industry, business, community, and other stakeholders
 - Ability to leverage both public and private investment for ongoing sustainability
- Contract Finalized February 2023 → Investment in the development of the Long Beach Early Learning Hub

Goals & Intended Outcomes of the Long Beach Early Learning Hub



ACCESS

Increase equitable access to quality childcare through centralized enrollment

CONNECT

Connect families to available financial assistance and form new partnerships to support the ECE industry

STABILIZE

Support childcare as an essential industry, facilitating families' ability to go to school or work

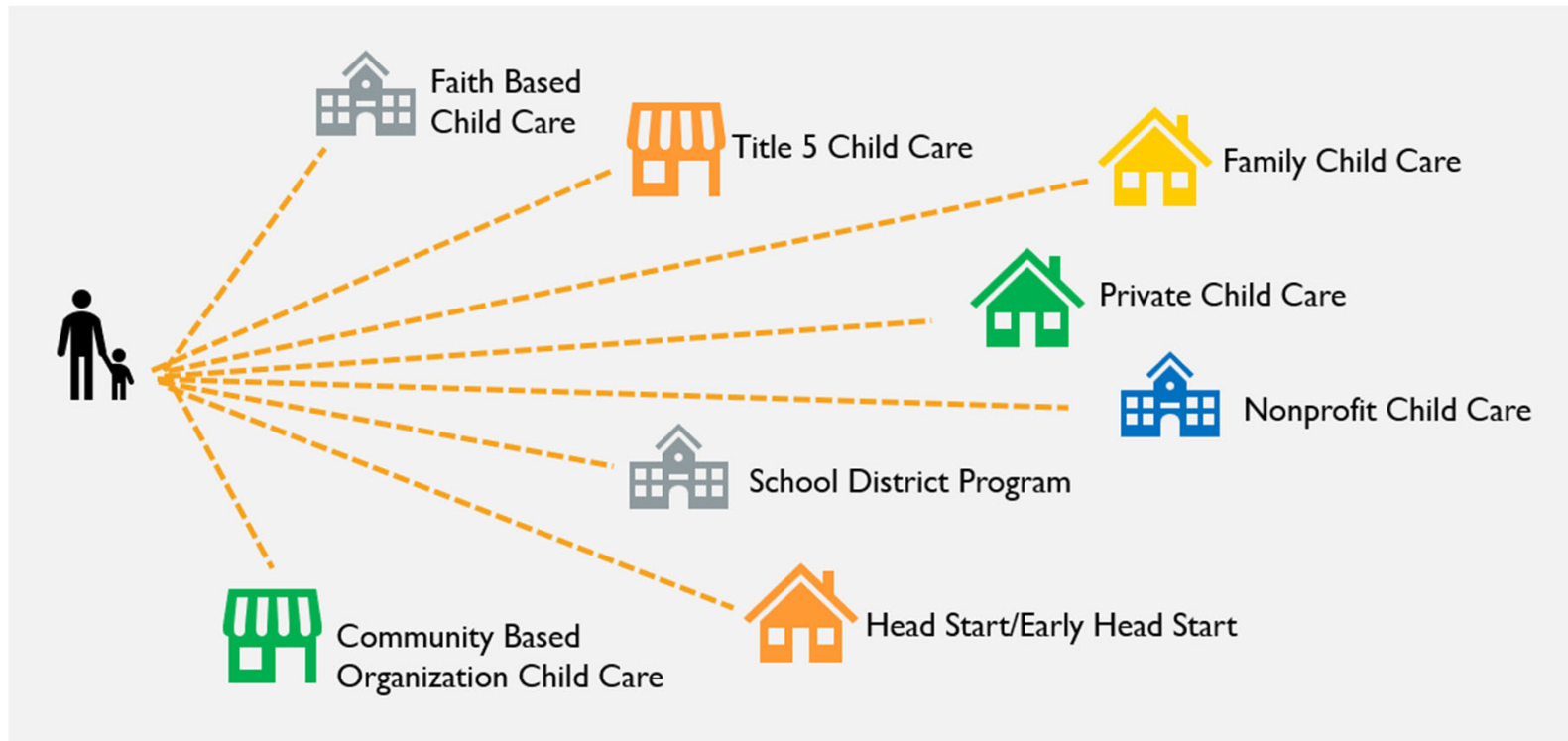
LINK

Provide linkage and coordination to ancillary services

IMPROVE

Improve provider capacity to meet the diverse needs of at-risk families

Current Childcare-Seeking Experience



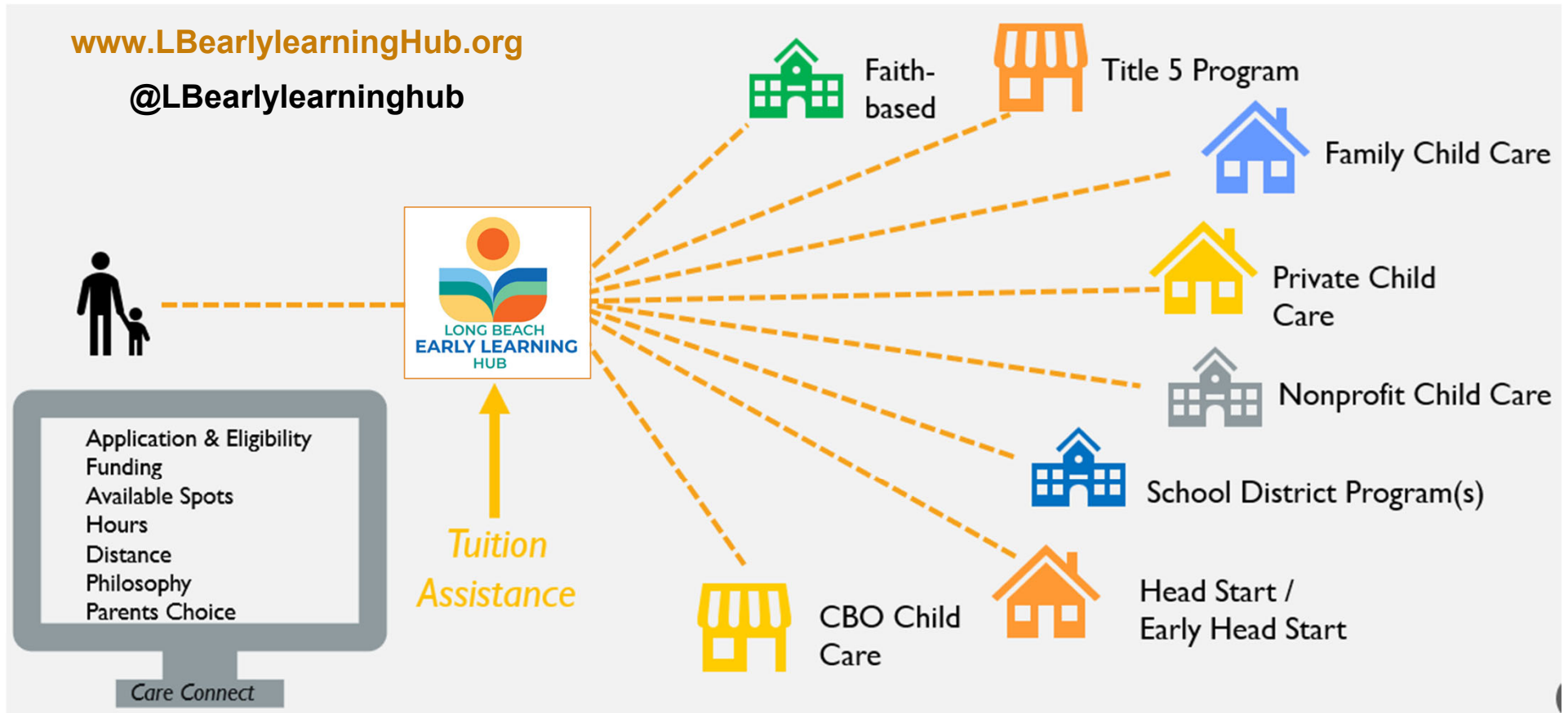
Typical Tuition Costs

Center-based: ~\$10,300

Family Childcare: ~\$10,700

Nannies: ~\$37,000-\$52,000

What is the ECE Enrollment Hub



Early Learning Hub Progress



- ✓ Stakeholder Advisory Committee..... Formed & meeting regularly
- ✓ Technology & Universal Application..... Developed
- ✓ Website..... Up and running
- ✓ Initial ECE partners..... Identified & engaged
- ✓ LBUSD..... Committed
- ✓ \$250,000 tuition support..... Available via Original Contract
- ✓ Centralized Enrollment..... **Beginning 8/28!**

Contract amendment will add..... \$125,000 in tuition support; expanded technology access, expanded outreach, and family engagement





Thank you

Christina Boatwright

Acting Collective Impact Bureau Manager

Christina.Boatwright@longbeach.gov

Karissa Selvester

Mayor's Fund for Education Executive Director

Kselvester@mayorsfundford.org



LONG BEACH
DEPARTMENT OF HEALTH
AND HUMAN SERVICES

CITY OF
LONG BEACH