

Airport Advisory Commission

Karen Sherman
Chair

Glenn Ray
Vice Chair

Jeffrey Anderson

Wayne Chaney Sr.

Elizabeth Cruz

Hal Gosling

Gerald Mineghino

Jeff Rowe

Roland B. Scott, Jr.

Airport Management

Jess L. Romo, A.A.E.
Airport Director

Juan López-Rios
Deputy Airport Director

Ken Mason
Executive Assistant

Carolyn Carlton-Lowe
Operations & Facilities
Bureau Manager

Claudia Lewis
Manager of Administration
& Finance

Ambi Thurai
Engineering Officer

Dale Worsham
Administrative Officer

Fred Pena
Facilities Management Officer

Karl Zittel
Airsides Operations Officer

Drew Schneider
Manager of Airport Security

Stephanie Montuya-Morisky
Public Affairs Officer

Ron Reeves
Noise & Environmental Affairs
Officer



long beach
airport



Long Beach Airport Monthly Noise Report August 2016

COMMERCIAL AIRCRAFT LATE NIGHT ACTIVITY
LGB Current Month & Calendar Year-To-Date Statistics (10 PM- 7AM)
August 2016

#	August			CY-T-D 2016		
	2016	2015	Change	2016	2015	Change
10PM - 11PM Activity						
Air Carrier & Commuter Operations	2,553	2,233	14.3%	16,949	16,240	4.4%
Alaska/Horizon	0	0		0	0	
Delta/SkyWest	0	0		16	4	300.0%
FedEx	0	0		0	0	
JetBlue Airways	22	20	10.0%	174	129	34.9%
Southwest	0	0		1	0	100.0%
UPS	0	0		0	0	
US Airways/American Airlines	2	9	-77.8%	13	29	-55.2%
Subtotal 10PM-11PM	24	29	-17.2%	204	162	25.9%
11PM- 7AM Activity						
	2016	2015	Change	2016	2015	Change
Alaska/Horizon	0	0		0	0	
Delta/SkyWest	0	2	-200.0%	3	3	0.0%
FedEx	0	0		0	0	
JetBlue Airways	19	15	26.7%	96	54	77.8%
Southwest	1	0	100.0%	1	0	100.0%
UPS	0	0		0	0	
US Airways/American Airlines	1	2	-50.0%	21	9	133.3%
Subtotal 11PM-7AM	21	19	10.5%	121	66	83.3%
TOTAL	45	48	-6.3%	325	228	42.5%

Notes:

1.8% (45 of 2,553) of total commercial operations occurred between 10pm - 7am.

1.5 flights - Nightly average for all late night (10:00 PM—7:00 AM) commercial flights, includes unanticipated delays.

0.7 flights - Nightly average for commercial flights after 11 PM.

AIRPORT OPERATIONS & AIRCRAFT NOISE VIOLATIONS

LGB Current Month & Calendar Year-To-Date Statistics

August 2016

August				CY-T-D 2016		
Air Carrier Noise Violations	2016	2015	Change	2016	2015	Change
Alaska/Horizon	0	0		0	0	
Delta/SkyWest	0	0		4	0	400.0%
FedEx	0	0		0	0	
JetBlue Airways	9	14	-35.7%	89	50	78.0%
Southwest	0	0		0	0	
UPS	0	0		1	1	0.0%
US Airways/American Airlines	0	1	-100.0%	4	5	-20.0%
Subtotal	9	15	-40.0%	98	56	75.0%
Commuter Noise Violations	2016	2015	Change	2016	2015	Change
Alaska/Horizon	0	0		0	0	
Delta/SkyWest	0	2	-200.0%	1	3	-66.7
USA/AAL/Mesa Airlines	0	0		0	0	
Subtotal	0	2	-200.0%	1	3	-66.7%
Non-Commercial Noise Violations	2016	2015	Change	2016	2015	Change
All GA, Charter & Other	12	7	71.4%	119	124	-4.0%
TOTAL	21	24	-12.5%	218	183	19.1%
Monetary Fines						
Airport Surcharges	\$1,200	\$1,300		\$12,400	\$10,300	
Consent Decree	\$54,000	\$72,000		\$414,000	\$219,000	
TOTAL	\$55,200	\$73,300		\$426,400	\$229,300	
Airport Operations (FAA)	2016	2015	Change	2016	2015	Change
Air Carrier + Commuter Carriers	2,553	2,233	14.3%	16,949	16,240	4.4%
Air Taxi + General Aviation	27,695	27,474	0.8%	194,276	192,346	1.0%
Military Operations	104	134	-22.4%	960	1,415	-32.2%
Total Aircraft Operations	30,352	29,841	1.7%	212,185	210,001	1.0%

Notes:

0.07% (21 of 30,352) of the Airport's total aircraft operations (Commercial & GA) resulted in an aircraft noise violation.

0.4% (9 of 2,553) the Airports Commercial operations (Commercial & Commuter) resulted in an aircraft noise violation.

USA— US Airways

AAL— American Airlines

AIRCRAFT NOISE VIOLATORS

August 2016

OWNERNAME	DATE	TIME	A/D	RWY	A/C TYPE	SEL	LIMIT	STATUS
JetBlue Airways Corporation	8/2/2016	0:00:34	D	30	A320	94.7	79.0	VIO + Alt Enf
JetBlue Airways Corporation	8/2/2016	0:21:43	A	30	A320	93.3	79.0	VIO + Alt Enf
Trinity Broadcasting of Florida Inc.	8/2/2016	1:22:57	A	30	CL60	89.4	79.0	VIO
Wheels Up Leasing LLC	8/8/2016	0:20:52	A	30	F2TH	91	79.0	VIO
Valley Logistics LLC	8/8/2016	0:44:31	A	30	C208	82.5	79.0	VIO
JetBlue Airways Corporation	8/9/2016	0:12:22	A	30	A320	93.1	79.0	VIO + Alt Enf
JetBlue Airways Corporation	8/11/2016	23:26:41	A	25R	A320	92.7	n/a	VIO + Alt Enf
JetBlue Airways Corporation	8/13/2016	0:03:57	A	30	A320	93.4	79.0	VIO + Alt Enf
JetBlue Airways Corporation	8/13/2016	0:28:38	A	30	A320	92.2	79.0	VIO + Alt Enf
Private	8/13/2016	23:18:02	A	30	C210	81.3	79.0	VIO
JetBlue Airways Corporation	8/15/2016	2:17:01	A	25R	A320	92.3	n/a	VIO + Alt Enf
Chandelle LLC	8/16/2016	21:01:01	A	25R	VEL	90.8	88.0	VIO
JetBlue Airways Corporation	8/17/2016	23:22:02	A	25R	A320	93.1	n/a	VIO + Alt Enf
Paradigm Air Carriers Inc.	8/19/2016	0:17:35	D	30	B752	95.5	79.0	VIO
Calchem Transportation LLC	8/19/2016	23:28:58	D	30	LJ45	85.7	79.0	VIO
Private Brokers	8/20/2016	7:07:22	D	25R	BE58	94.7	92.0	VIO
JetBlue Airways Corporation	8/21/2016	23:41:40	D	30	A320	96.1	79.0	VIO + Alt Enf
Felham Enterprises Ltd	8/24/2016	22:28:20	D	30	GLF6	92.7	90.0	VIO
Plane Fun Inc TR Trustee	8/27/2016	10:15:18	D	25R	C210	100	92.0	VIO
Terrible Herbst Oil	8/28/2016	0:13:59	A	30	C560	88	79.0	VIO
Private	8/31/2016	14:06:26	D	25R	BE35	95	92.0	VIO

DEFINITIONS:

A/C Type — Aircraft Type

A/D/G — Arrival / Departure / Ground Operation

ALT ENF — Alternative Enforcement

RWY — Runway

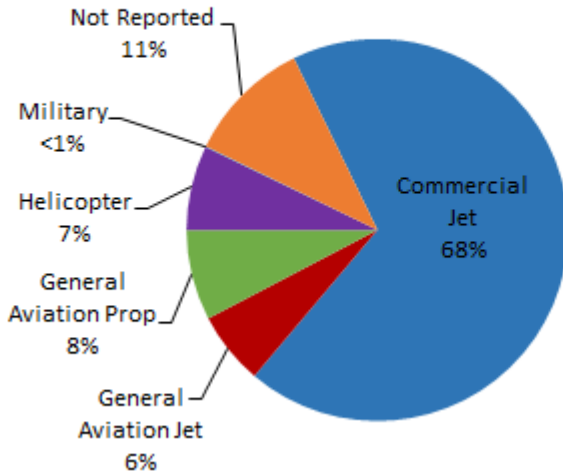
SEL — SENEL — Single Event Noise Exposure Level (dBA)

VIO — Violation

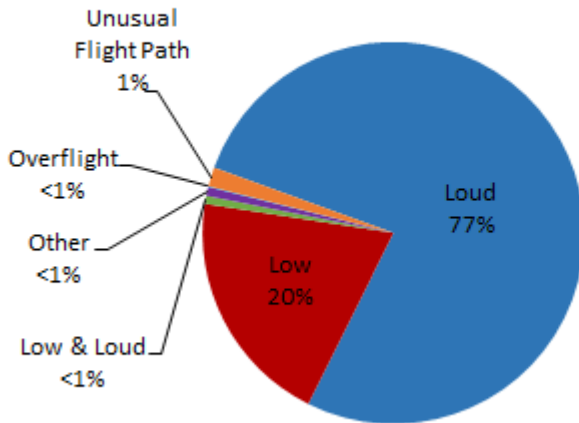
LGB AIRCRAFT NOISE COMPLAINTS

August 2016

Complaints by Aircraft Types



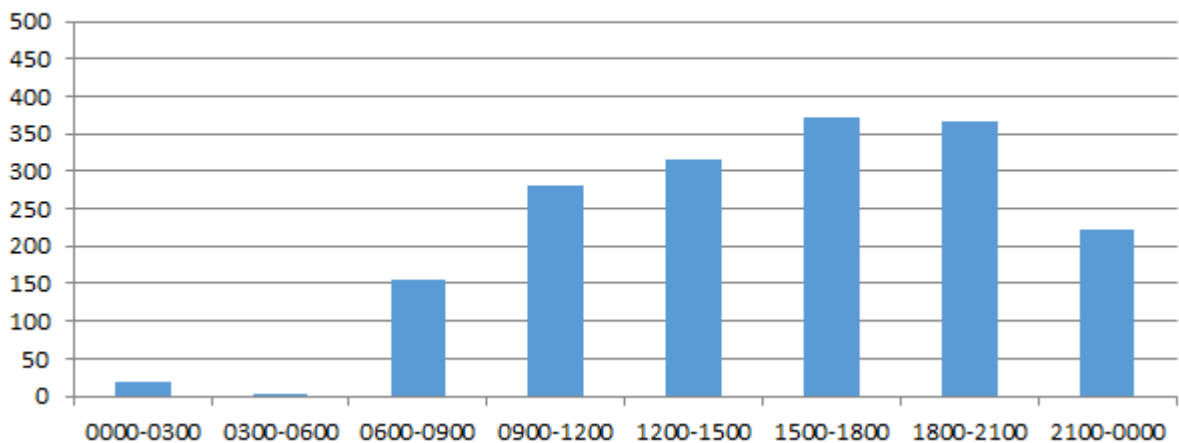
Complaints by Concern



Complaints by Zip Code

Code	Complaints	Units
90278	2	1
90501	4	3
90740	3	1
90802	2	2
90804	3	1
90806	1	1
90807	95	26
90808	27	24
90814	1	1
90815	4	4
92612	30	1
92626	696	2
92646	504	1
92647	1	1
92648	142	4
92649	209	6
94002	1	1
Not Reported	8	8
Grand Total	1,733	88

Complaints by Time





long beach airport



Long Beach Airport

4100 E. Donald Douglas Drive, Long Beach, CA 90808

www.lgb.org • lgbapt@longbeach.gov

Administration • (562) 570-2619