

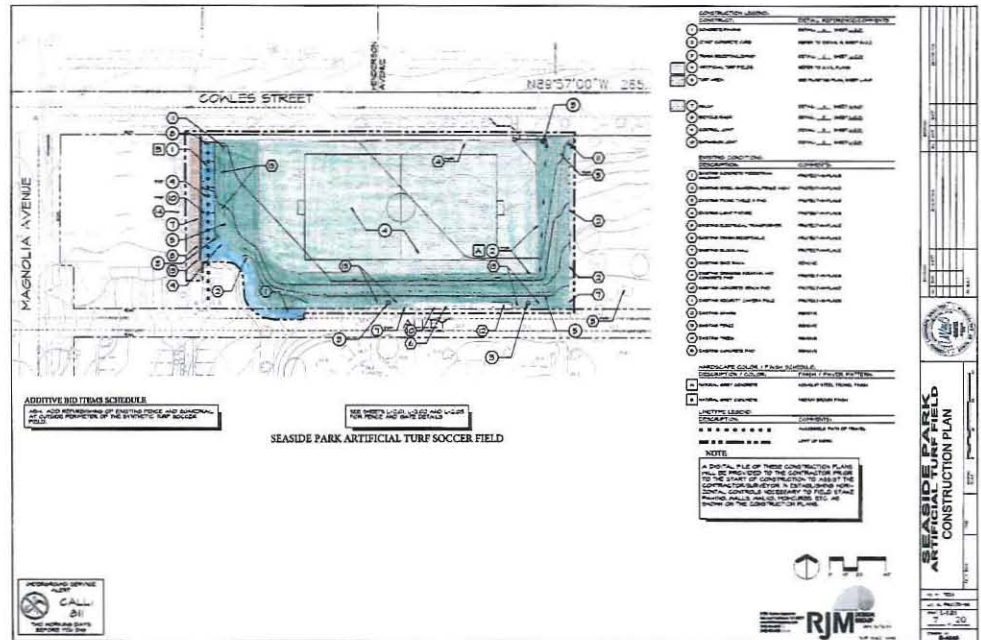


**Seaside Park Artificial Turf Project
Admiral Kidd Artificial Turf Project
El Dorado Park Improvements**

February 7, 2017

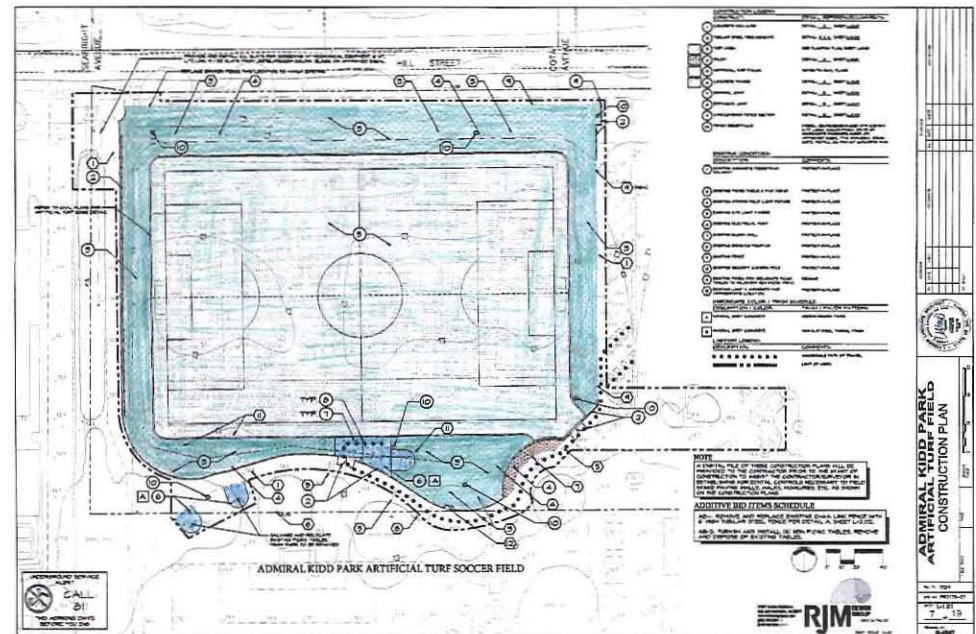
The Seaside Park Artificial Turf Project

- Improves a 0.7 acre site within Seaside Park with the following:
 - A striped artificial turf sports field
 - Pedestrian walkways
 - Fencing and guardrails
 - Field lighting infrastructure
 - Site Furnishings



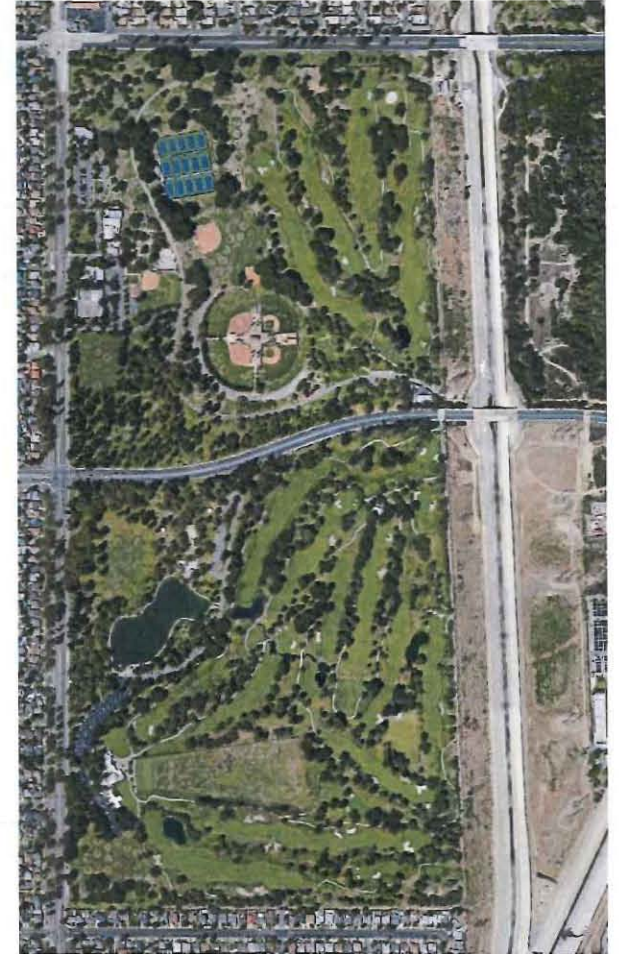
The Admiral Kidd Artificial Turf Project

- Improves a 2.0 acre site within Admiral Kidd Park with the following:
 - A striped artificial turf sports field
 - Pedestrian walkways
 - Fencing and guardrails
 - Field lighting infrastructure
 - Site Furnishings



El Dorado Park Improvements

- Improves areas within El Dorado Park by:
 - Enhancing current conditions at existing fields
 - Exploring opportunities for adding new field space



Artificial Turf

- Commonly used in playgrounds, sports fields and running tracks, making up the majority of fields installed each year at schools and universities
- Benefits of Artificial Turf Fields:
 - Reduces water use in conjunction with State mandates
 - Increases playable hours per field
 - Lower maintenance costs and longer lifespans
 - Improves usability/performance for sports



Artificial Turf (continued)

- On June 16, 2015, Parks and Recreation Commission adopted a recommendation to use only “organic” materials for Artificial Turf fields
- Staff reviewed both coconut fiber matrix and cork/sand as organic alternatives to crumb rubber
- Staff adopted cork/sand as the preferred material for the following reasons:
 - Does not require regular irrigation
 - Good resiliency
 - Lower costs compared to coconut fiber matrix
 - Superior heat dissipating properties
 - Natural/renewable material



Field Maintenance

- Project includes requirement for contractor to maintain artificial turf system for eight years
- Maintenance includes:
 - Brushing: To rejuvenate matted fibers (every 4 – 6 weeks)
 - Aerating: To avoid minor compaction of infill (every 4 months)
 - Raking: To prevent matted fibers and infill compaction (every 4 – 6 weeks)
 - Sweeping: To remove litter/foreign material (frequency as needed)

Questions?