



DISH WIRELESS SITE NAME:

WALMART LONG BEACH

DISH WIRELESS SITE ID:

LALAX04053B

DISH WIRELESS SITE ADDRESS:

7250 CARSON BLVD.
LONG BEACH, CA 90808

SCE TOWER # LINE NAME:

**M4-T3 ALAMITOS-BARRE #1 & #2 220kV T/L BUILT: 1964
TOP OF (P) DISH WIRELESS ANTENNAS- 47'-0"**

SITE INFORMATION		PROJECT DIRECTORY	
PROPERTY OWNER:	SOUTHERN CALIFORNIA EDISON	APPLICANT:	DISH WIRELESS 16812 ARMSTRONG AVENUE SUITE 200 IRVINE, CA. 92606
PROJECT ADDRESS:	7250 CARSON BLVD. LONG BEACH, CA 90808	CONSTRUCTION MANAGER:	DISH WIRELESS XAVIER PULIDO xavier.pulido@dish.com (626) 893-1046
PROJECT TYPE:	TOWER	RF ENGINEER:	DISH WIRELESS LORRIAN LANDICHO lorrian.landicho@dish.com (209) 640-0444
DISH WIRELESS SITE ID:	LALAX04053B	PLANNING:	MOTIVE INFRASTRUCTURE SOLUTIONS 17260 NEWHOPE STREET FOUNTAIN VALLEY, CA. 92708 CONTACT: PATRICK GRIFFIN (310) 880-3135
COUNTY:	LOS ANGELES COUNTY	ARCHITECT:	MOTIVE INFRASTRUCTURE SOLUTIONS 17260 NEWHOPE STREET FOUNTAIN VALLEY, CA. 92708 CONTACT: MARTIN DOUBEK (877) 228-5922
LATITUDE (NAD 83):	33° 49' 48.30" N (33.830083)	SURVEYOR:	CALVADA SURVEYING, INC. 411 JENKS CIRCLE SUITE 205 CORONA, CA. 92880 CONTACT: RAMON GONZALEZ
LONGITUDE (NAD 83):	118° 05' 29.84" W (-118.091622)		
ZONING JURISDICTION:	CITY OF LONG BEACH		
ZONING DISTRICT:	---		
PARCEL NUMBER:	7075-001-944		
DISH WIRELESS OCCUPANCY GROUP:	U		
DISH WIRELESS CONSTRUCTION TYPE:	V		
POWER COMPANY:	SCE		
FIBER COMPANY:	---		



16812 ARMSTRONG AVENUE
SUITE 200
IRVINE, CA. 92606



17260 NEWHOPE ST., FOUNTAIN VALLEY, CA 92708
PHONE: (714) 752-4263 FAX: (949) 760-3931

PROJECT DESCRIPTION

THIS IS NOT AN ALL INCLUSIVE LIST. CONTRACTOR SHALL UTILIZE SPECIFIED EQUIPMENT PART OR ENGINEER APPROVED EQUIVALENT. CONTRACTOR SHALL VERIFY ALL NEEDED EQUIPMENT TO PROVIDE A FUNCTIONAL SITE. THE PROJECT GENERALLY CONSISTS OF THE FOLLOWING:

SCOPE OF WORK:

- INSTALL (1) CMU EQUIPMENT ENCLOSURE UNDER (E) SCE TOWER.
- INSTALL (1) EQUIPMENT CABINET ON (P) CONCRETE PAD INSIDE (P) CMU EQUIPMENT ENCLOSURE.
- INSTALL MISC POWER AND FIBER EQUIPMENT ON INSIDE FACE UP OF (P) CMU ENCLOSURE.
- INSTALL (3) PROPOSED PANEL ANTENNAS (1/SECTOR).
- INSTALL (6) PROPOSED RRU'S (2/SECTOR).
- INSTALL (1) RAYCAP SURGE SUPPRESSORS ON (P) ANTENNA FRAME.
- INSTALL (1) GPS ANTENNA ON (P) EQUIPMENT CABINET.
- INSTALL (1) PPC CABINET.

CALIFORNIA - CODE COMPLIANCE

ALL WORK SHALL BE PERFORMED AND MATERIALS INSTALLED IN ACCORDANCE WITH THE CURRENT EDITIONS OF THE FOLLOWING CODES AS ADOPTED BY THE LOCAL GOVERNING AUTHORITIES. NOTHING IN THESE PLANS IS TO BE CONSTRUED TO PERMIT WORK NOT CONFORMING TO THESE CODES:

- | | |
|---------------------------------|-------------------------------------|
| 2019 CALIFORNIA ENERGY CODE | 2019 CALIFORNIA GREEN BUILDING CODE |
| 2019 CALIFORNIA BUILDING CODE | 2019 CALIFORNIA MECHANICAL CODE |
| 2019 CALIFORNIA ELECTRICAL CODE | 2019 CALIFORNIA PLUMBING CODE |
| 2019 CALIFORNIA FIRE CODE | |

SITE PHOTO



DIRECTIONS

FROM: DISH WIRELESS
16812 ARMSTRONG AVENUE
SUITE 200
IRVINE, CA. 92606

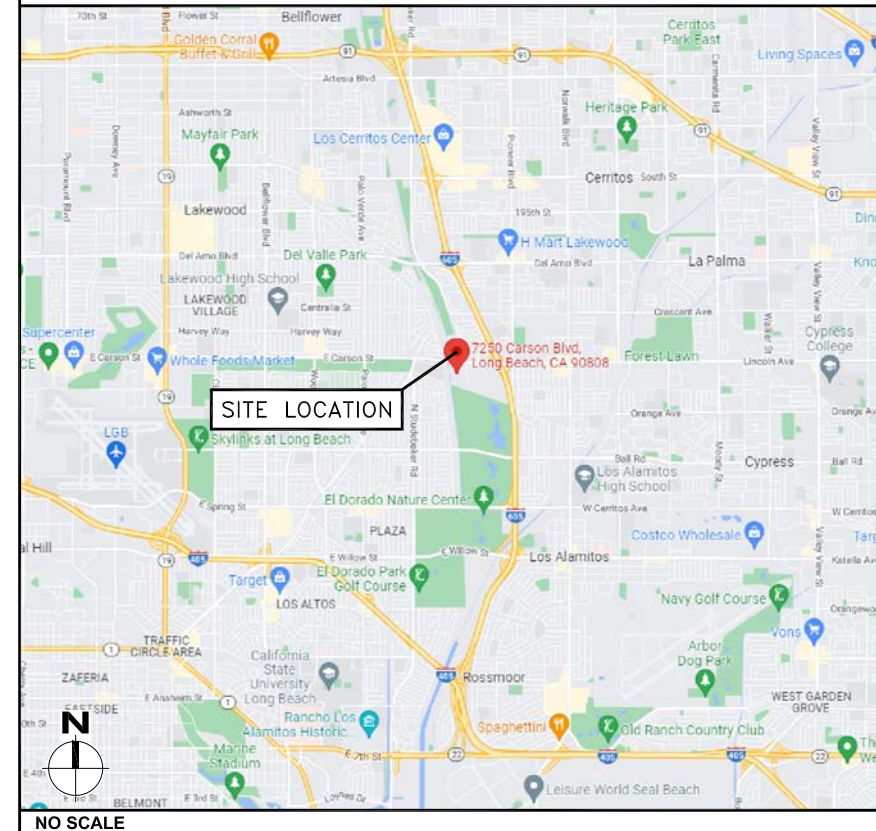
TO: 7250 CARSON BLVD.
LONG BEACH, CA 90808



SHEET INDEX

SHEET NO.	SHEET TITLE
T-1	TITLE SHEET
C-1	TOPOGRAPHIC SURVEY
C-2	TOPOGRAPHIC SURVEY
1A	1-A ACCURACY CERTIFICATION
A-1	SITE PLAN
A-2	ENLARGED SITE PLAN
A-3	PROPOSED EQUIPMENT LAYOUT PLAN
A-3	PROPOSED ANTENNA LAYOUT PLAN
A-4	PROPOSED SOUTH AND NORTH ELEVATIONS
A-5	PROPOSED WEST AND EAST ELEVATIONS
A-6	DETAILS

VICINITY MAP



UNDERGROUND SERVICE ALERT
UTILITY NOTIFICATION CENTER OF CALIFORNIA
(800) 422-4133
WWW.CALIFORNIA811.ORG
CALL 2-14 WORKING DAYS UTILITY NOTIFICATION PRIOR TO CONSTRUCTION



GENERAL NOTES

THE FACILITY IS UNMANNED AND NOT FOR HUMAN HABITATION. A TECHNICIAN WILL VISIT THE SITE AS REQUIRED FOR ROUTINE MAINTENANCE. THE PROJECT WILL NOT RESULT IN ANY SIGNIFICANT DISTURBANCE OR EFFECT ON DRAINAGE. NO SANITARY SEWER SERVICE, POTABLE WATER, OR TRASH DISPOSAL IS REQUIRED AND NO COMMERCIAL SIGNAGE IS PROPOSED.

11"x17" PLOT WILL BE HALF SCALE UNLESS OTHERWISE NOTED

CONTRACTOR SHALL VERIFY ALL PLANS, EXISTING DIMENSIONS, AND CONDITIONS ON THE JOB SITE, AND SHALL IMMEDIATELY NOTIFY THE ENGINEER IN WRITING OF ANY DISCREPANCIES BEFORE PROCEEDING WITH THE WORK.

IT IS A VIOLATION OF LAW FOR ANY PERSON, UNLESS THEY ARE ACTING UNDER THE DIRECTION OF A LICENSED PROFESSIONAL ENGINEER, TO ALTER THIS DOCUMENT.

DRAWN BY:	CHECKED BY:	APPROVED BY:
MW	MBD	MBD

RFDS REV #: 2 ISSUED: 06/28/2022

ZONING DRAWINGS

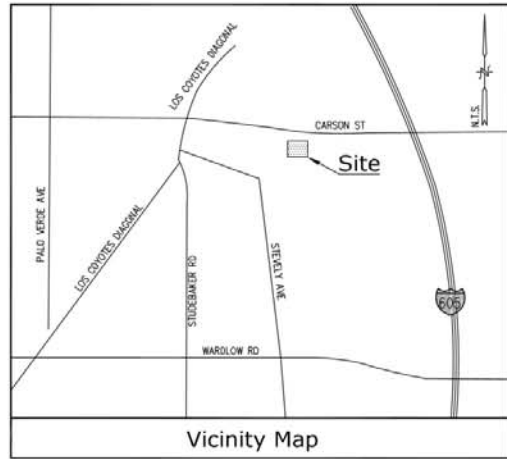
SUBMITTALS		
REV	DATE	DESCRIPTION
A	09/13/2022	90% ZD'S
0	10/07/2022	100% ZD'S

A&E PROJECT NUMBER
11700267

DISH WIRELESS PROJECT INFORMATION
LALAX04053B
7250 CARSON BLVD.
LONG BEACH, CA 90808

SHEET TITLE
TITLE SHEET

SHEET NUMBER
T-1



Title Report

PREPARED BY: COMMONWEALTH LAND TITLE COMPANY
 ORDER NO.: LALAX04053B
 DATED: JUNE 15, 2022

Legal Description

PARCEL 15 OF PARCEL MAP NO. 24860, IN THE CITY OF LONG BEACH, COUNTY OF LOS ANGELES, STATE OF CALIFORNIA, FILED IN BOOK 319, PAGES 34 TO 47 INCLUSIVE OF PARCEL MAPS, IN THE OFFICE OF THE COUNTY RECORDER OF SAID COUNTY.

Assessor's Parcel No.

7075-001-944

Easements

2. EASEMENT(S) FOR ROADS, RAILROADS AND DITCHES AND RIGHTS INCIDENTAL THERETO AS SET FORTH IN BK. 1193, PG. 279 OF DEEDS. (PLOTTED HEREIN, PER P.M. 2460; P.M.B. 319/34-5)
3. EASEMENT(S) FOR THE CONSTRUCTION, RECONSTRUCTION, INSPECTION, MAINTENANCE AND REPAIR OF PROTECTION WORKS FOR THE PURPOSE OF CONFINING THE WATERS OF SAN GABRIEL RIVER IN A SINGLE CHANNEL AND FOR THE PURPOSE OF ESTABLISHING AN OFFICE CHANNEL TO CARRY THE WATER OF SAID STREAM IN A DEFINITE COURSE, AND RIGHTS INCIDENTAL THERETO AS SET FORTH IN BK. 6609, PG. 39, O.R. SAID EASEMENT PURPORTS TO BE OBTAINED BY DEED RECORDED MAY 18, 2011, INST. NO. 2011-699691, O.R. (PLOTTED HEREIN, PER P.M. 2460; P.M.B. 319/34-5)
4. THE EFFECT OF A PROVISION IN THE AGREEMENT DATED FEBRUARY 4, 1931, EXECUTED BY THE CITY OF LONG BEACH AND MONTANA LAND COMPANY, RECORDED MARCH 13, 1935 IN BK. 13353, PG. 37, O.R. (PLOTTED HEREIN, PER P.M. 2460; P.M.B. 319/34-5)
5. CONDITIONS AND RESTRICTIONS RECORDED DECEMBER 1, 1953, AS DOCUMENT NO. 3114, BK. 43283, PG. 195, O.R. (PLOTTED HEREIN)
6. EASEMENT(S) FOR CONSTRUCT, MAINTAIN, OPERATE, ETC., PIPES AND POLE AND RIGHT ON INGRESS AND EGRESS FOR TRIMMING TREES, ETC., AND RIGHTS INCIDENTAL THERETO AS SET FORTH IN A DOCUMENT RECORDED APRIL 5, 1954 AS DOCUMENT NO. 5, BK. 44240, PG. 236, O.R. (PLOTTED HEREIN)
7. COVENANTS, CONDITIONS AND RESTRICTIONS AS SET FORTH IN APPLICABLE STATE OR FEDERAL LAWS, EXCEPT TO THE EXTENT THAT SAID COVENANT OR RESTRICTION IS PERMITTED BY APPLICABLE LAW, AS SET FORTH IN THE DOCUMENT RECORDED APRIL 5, 1954 AS DOCUMENT NO. 5, BK. 44240, PG. 236, O.R. (PLOTTED HEREIN)
8. EASEMENT(S) FOR A STORM DRAIN AND RIGHTS INCIDENTAL THERETO AS SET FORTH IN A DOCUMENT RECORDED JULY 9, 1976 AS DOCUMENT NO. 5273, O.R. (PLOTTED HEREIN)
9. EASEMENT(S) FOR PUBLIC UTILITIES AND RIGHTS INCIDENTAL THERETO AS SET FORTH IN A DOCUMENT RECORDED AUGUST 23, 1976 AS DOCUMENT NO. 3467, O.R. (PLOTTED HEREIN)
10. EASEMENT(S) FOR PUBLIC UTILITIES AND RIGHTS INCIDENTAL THERETO AS SET FORTH IN A DOCUMENT RECORDED MAY 30, 1980 AS INST. NO. 80-533455, O.R. (PLOTTED HEREIN, PER P.M. 2460; P.M.B. 319/34-5)
18. EASEMENT(S) FOR PUBLIC UTILITIES AND RIGHTS INCIDENTAL THERETO, AS GRANTED IN A DOCUMENT RECORDED AUGUST 17, 1988 AS INST. NO. 98-1450873, O.R. (BLANKET IN NATURE)
19. EASEMENT(S) FOR PUBLIC UTILITIES AND RIGHTS INCIDENTAL THERETO, AS GRANTED IN A DOCUMENT RECORDED AUGUST 17, 1988 AS INST. NO. 98-1450874, O.R. (BLANKET IN NATURE)
20. EASEMENT(S) FOR PUBLIC UTILITIES AND RIGHTS INCIDENTAL THERETO, AS GRANTED IN A DOCUMENT RECORDED JANUARY 22, 1999 AS INST. NO. 99-97334, O.R. (BLANKET IN NATURE)
22. EASEMENT(S) FOR RIGHT OF WAY TO CONSTRUCT, USE, MAINTAIN, OPERATE, ALTER, ADD TO, REPAIR, REPLACE, RECONSTRUCT, INSPECT AND REMOVE AT ANY TIME AND FROM TIME TO TIME UNDERGROUND RECLAIMED WATER LINES, VALVES, FITTINGS AND OTHER APPURTENANCE, AND RIGHTS INCIDENTAL THERETO AS SET FORTH IN A DOCUMENT RECORDED MAY 10, 2000 AS INST. 00-0720202, O.R. (PLOTTED HEREIN)
24. A RESERVATION OF THE FUTURE RIGHT TO GRANT TO A NON-EXCLUSIVE VEHICLE TURN AROUND EASEMENT OVER A PORTION OF SAID LAND, MORE PARTICULARLY DESCRIBED IN EXHIBIT 2' OF THAT CERTAIN MEMORANDUM OF AMENDMENT AND RESTATEMENT OF LONG BEACH TOWNE CENTER GROUND SUBLEASE RECORDED JUNE 19, 2000 AS INST. 00-0937317, O.R. (PLOTTED HEREIN)
26. MATTERS CONTAINED IN THAT CERTAIN DOCUMENT ENTITLED 'EASEMENT AGREEMENT' RECORDED JUNE 27, 2000 AS INST. NO. 00-0984954, O.R. (PLOTTED HEREIN)
27. MATTERS CONTAINED IN THAT CERTAIN DOCUMENT ENTITLED 'EASEMENT RECOGNITION, NON-DISTURBANCE AND ATTORNEY AGREEMENT' RECORDED JUNE 27, 2000 AS INST. NO. 00-0984955, O.R. (PLOTTED HEREIN)
28. MATTERS CONTAINED IN THAT CERTAIN DOCUMENT ENTITLED 'EASEMENT AGREEMENT' RECORDED JUNE 29, 2000 AS INST. NO. 00-1001867, O.R. (PLOTTED HEREIN)
29. EASEMENT(S) TO CONSTRUCT, USE, MAINTAIN, OPERATE, ALTER, ADD TO, REPAIR, REPLACE, RECONSTRUCT, INSPECT AND REMOVE AT ANY TIME AND FROM TIME TO TIME UNDERGROUND WATER, SEWER AND RECLAIMED WATER LINES, VALVES, FITTING AND OTHER APPURTENANCE AND RIGHTS INCIDENTAL THERETO AS SET FORTH IN A DOCUMENT RECORDED NOVEMBER 21, 2001 AS INST. NO. 01-2218275, O.R. (PLOTTED HEREIN)

Boundary Detail

SCALE: 1"=80'

Legend

- CONCRETE PAVEMENT
- FOUND MONUMENT AS NOTED
- GAS VALVE
- GUARD POST
- HANDICAP
- IRRIGATION CONTROL VALVE
- LATITUDE-LONGITUDE COORDINATE
- LIGHT STANDARD
- SPOT
- TREE (TYPICAL)
- WATER FAUCET
- WATER VALVE
- DRAIN INLET
- APN
- DI
- PS
- FINISH SURFACE
- HCR
- KEY
- IRC
- TOP OF CURB
- TOP OF STRUCTURE
- CENTERLINE
- EASEMENT LINE
- EDGE OF PAVEMENT
- GAS LINE (PAINTED)
- INTERIOR LOT LINE
- PROPERTY LINE
- PC
- TOP

Access Route/Lease Area

TO BE DETERMINED

Geographic Coordinates at Existing Tower

1983 DATUM: LATITUDE 33° 49' 48.30" N LONGITUDE 118° 05' 29.84" W
 ELEVATION = 36.8 FEET ABOVE MEAN SEA LEVEL

CERTIFICATION:
 THE LATITUDE AND LONGITUDE SHOWN ABOVE ARE ACCURATE TO WITHIN +/- 15 FEET HORIZONTALLY AND THAT THE ELEVATIONS SHOWN ABOVE ARE ACCURATE TO WITHIN +/- 3 FEET VERTICALLY. THE HORIZONTAL DATUM (GEOGRAPHIC COORDINATES) IS IN TERMS OF THE NORTH AMERICAN DATUM OF 1983 (NAD 83) AND IS EXPRESSED IN DEGREES (°), MINUTES (') AND SECONDS ("). TO THE NEAREST HUNDREDTH OF A SECOND. THE VERTICAL DATUM (ELEVATIONS) IS IN TERMS OF THE NORTH AMERICAN VERTICAL DATUM OF 1988 (NAVD 88) AND IS DETERMINED TO THE NEAREST TENTH OF A FOOT.

Basis of Bearings

THE BEARINGS SHOWN HEREON ARE BASED UPON THE CALIFORNIA COORDINATE SYSTEM OF 1983, CCS83, ZONE 5, (2022.25) IN ACCORDANCE TO THE CALIFORNIA PUBLIC RESOURCES CODE SECTIONS 8801-8819; SAID BEARINGS ARE DETERMINED LOCALLY UPON FIELD-OBSERVED TIES TO THE FOLLOWING LEICA SMARTNET NORTH AMERICA (S.N.A.) CONTINUOUSLY OPERATING REFERENCE STATIONS (C.O.R.S.).

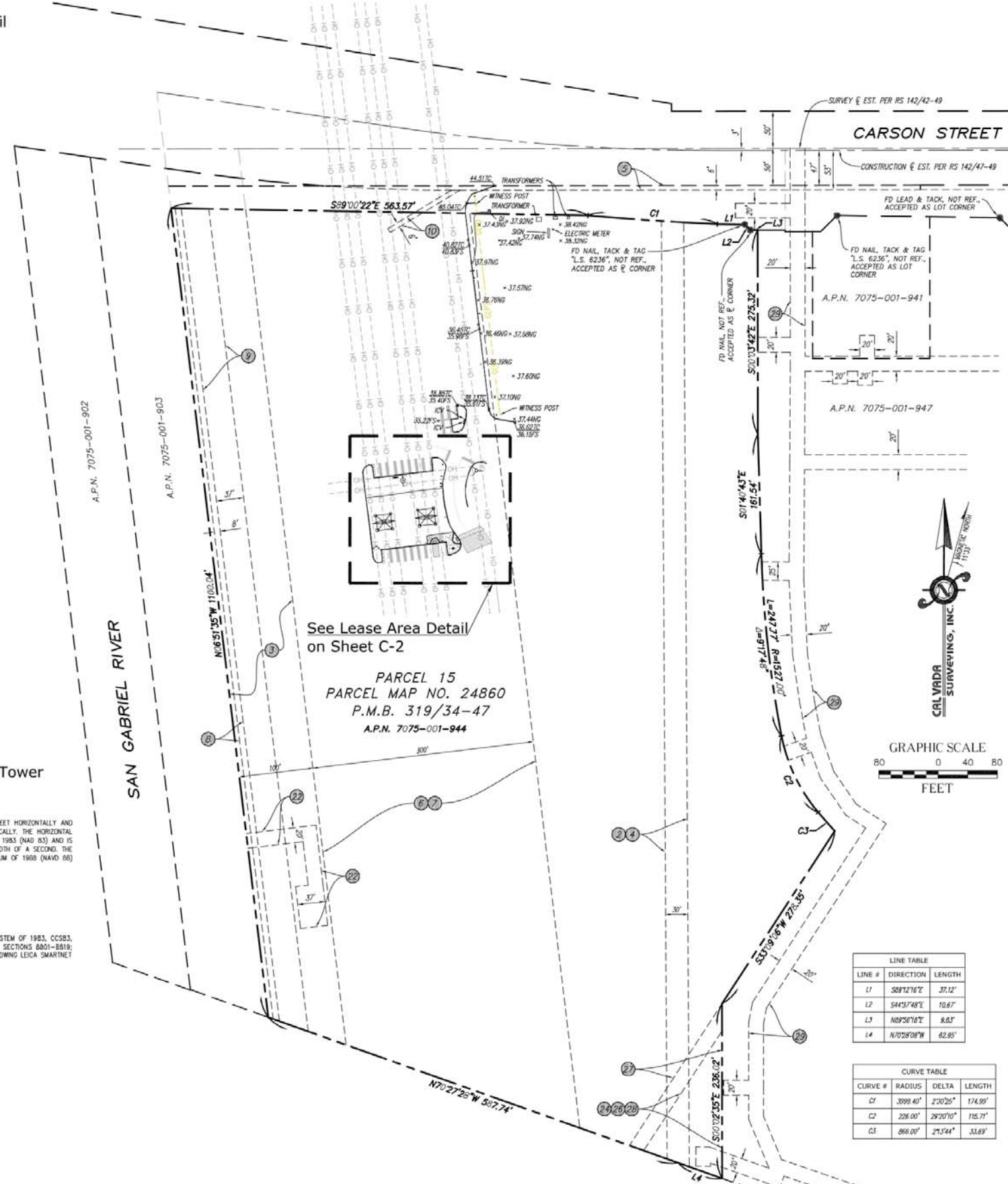
S.N.A. CASP:
 NORTHING = 1800797.51' EASTING = 6537292.64'
 S.N.A. CASR:
 NORTHING = 2223989.16' EASTING = 6056246.19'

Benchmark

THE SMARTNET NORTH AMERICA C.O.R.S. ELEVATION 157.96 FEET (NAVD 88).

Date of Survey

JULY 11, 2022.



LINE TABLE		
LINE #	DIRECTION	LENGTH
L1	S89°22'16"E	37.12'
L2	S44°57'48"E	10.67'
L3	N89°26'16"E	8.63'
L4	N70°28'08"W	62.85'

CURVE TABLE			
CURVE #	RADIUS	DELTA	LENGTH
C1	3098.40'	2°30'25"	174.89'
C2	206.00'	29°20'10"	115.71'
C3	866.00'	2°53'44"	33.69'



17260 NEWHOPE STREET, FOUNTAIN VALLEY, CA 926708

PROPRIETARY INFORMATION

THE INFORMATION CONTAINED IN THIS SET OF CONSTRUCTION DOCUMENTS IS PROPRIETARY BY NATURE. ANY USE OR DISCLOSURE OTHER THAN THAT WHICH RELATES TO DISH IS STRICTLY PROHIBITED.

CONSULTANT

CAL VADA SURVEYING, INC.

411 Jenks Cir., Suite 205, Corona, CA 92880
 Phone: 951-280-9990 Fax: 951-280-9746
 Toll Free: 800-CALVADA www.calvada.com
 JOB NO. 22534

PREPARED FOR



16812 ARMSTRONG AVE., SUITE 200 IRVINE, CA 92606
 PHONE: (949) 690-0988

APPROVALS

R.F.	DATE
SAC AND ZONING	DATE
CM	DATE
CM	DATE
OWNER APPROVAL	DATE

PROJECT SITE

LALAX04053B
 7250 CARSON BLVD.
 LONG BEACH, CA 90805
 LOS ANGELES COUNTY

DATE	DESCRIPTION	BY
07/19/22	SUBMITTAL	LN
08/10/22	TITLE	NS

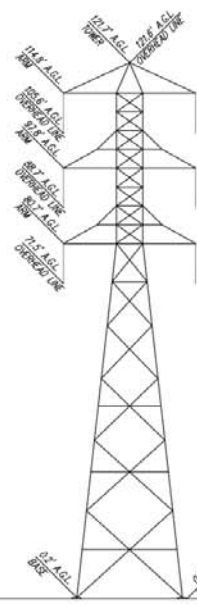
SHEET TITLE

TOPOGRAPHIC SURVEY

C-1

SHEET 1 OF 2

Existing Tower Profile
SOUTHERLY ELEVATION (N.T.S.)



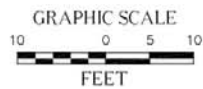
Lease Area Detail
SCALE: 1"=10'



EXISTING TOWER
GEOGRAPHIC COORDINATES:
Latitude: N33°49'48.30" (NAD 83)
Longitude: W118°05'29.84" (NAD 83)

Legend

- CONCRETE PAVEMENT
- FOUND MONUMENT AS NOTED
- GAS VALVE
- GUARD POST
- HANDICAP
- IRRIGATION CONTROL VALVE
- LATITUDE-LONGITUDE COORDINATE
- LIGHT STANDARD
- SIDE
- TREE (TYPICAL)
- WATER FAUCET
- WATER VALVE
- ASSESSOR'S PARCEL NUMBER
- DRAIN INLET
- FS FINISH SURFACE
- HCR HANDICAP RAMP
- KCV IRRIGATION CONTROL VALVE
- NG NATURAL GROUND
- TC TOP OF CURB
- TOP
- TOP OF STRUCTURE
- CENTERLINE
- EASEMENT LINE
- EDGE OF PAVEMENT
- GAS LINE (PAINTED)
- INTERIOR LOT LINE
- OVERHEAD LINE
- PROPERTY LINE
- RIGHT-OF-WAY
- TOS TOP OF SLOPE



17280 NEWHOPE STREET, FOUNTAIN VALLEY, CA 92678

PROPRIETARY INFORMATION

THE INFORMATION CONTAINED IN THIS SET OF CONSTRUCTION DOCUMENTS IS PROPRIETARY BY NATURE. ANY USE OR DISCLOSURE OTHER THAN THAT WHICH RELATES TO DISH IS STRICTLY PROHIBITED.

CONSULTANT
CALVADA SURVEYING, INC.

411 Jenks Cir., Suite 205, Corona, CA 92880
Phone: 951-280-9990 Fax: 951-280-8748
Toll Free: 800-CALVADA www.calvada.com
JOB NO. 22534

PREPARED FOR



16812 ARMSTRONG AVE., SUITE 200 IRVINE, CA 92606
PHONE: (949) 690-0988

APPROVALS

R.F.	DATE
SAC AND ZONING	DATE
CM	DATE
CM	DATE
OWNER APPROVAL	DATE

PROJECT SITE

LALAX04053B

7250 CARSON BLVD.
LONG BEACH, CA 90805
LOS ANGELES COUNTY

DATE	DESCRIPTION	BY
07/19/22	SUBMITTAL	LN
08/10/22	TITLE/FINAL	NS

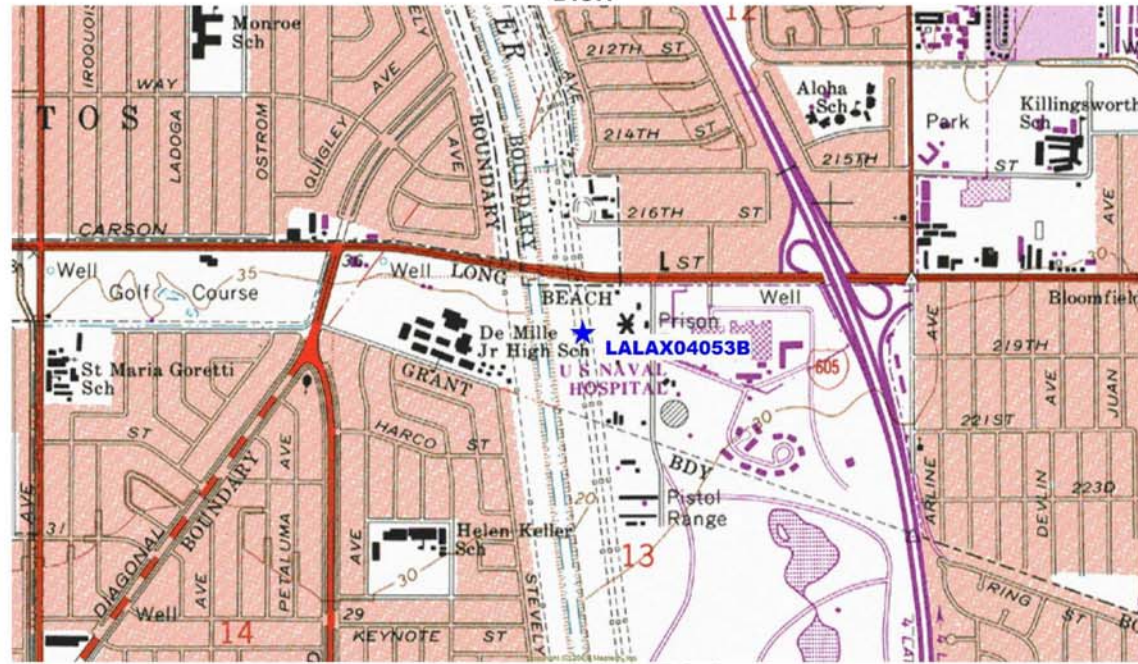
SHEET TITLE

TOPOGRAPHIC SURVEY

C-2

SHEET 2 OF 2

**1-A ACCURACY CERTIFICATION
DISH**



**Geographic Coordinates at Existing Tower
(NAD 83)**

LATITUDE: 33° 49' 48.30" N (33.830083 DD)
LONGITUDE: 118° 05' 29.84" W (-118.091622 DD)

Elevations (NAVD 88)

Ground Elevation at Existing Tower 36.8 Feet A.M.S.L. (± 36'-10")
Top of Existing Tower 121.7 Feet A.G.L. (± 121'-8")
Overall Height: Top of Existing Tower 121.7 Feet A.G.L. (± 121'-8")

Site Name: LALAX04053B
Site Address: 7250 Carson Blvd., Long Beach, CA 90808
Los Angeles County
Survey Date: July 11, 2022
Data Source: The Smartnet North America C.O.R.S. "CASF"



I hereby certify that the **latitude** and **longitude** shown above are accurate to within +/- 20 feet horizontally and that the **elevation** shown above are accurate to within +/- 3 feet vertically. The horizontal datum (Geographic Coordinates) is in terms of the North American Datum of 1983 (NAD 83) and is expressed in degrees (°), minutes (') and seconds ("), to the nearest hundredth of a second. The vertical datum (Elevations) is in terms of the North American Vertical Datum of 1988 (NAVD 88) and is determined to the nearest tenth of a foot.

Note: DD indicates Decimal Degrees.



IT IS A VIOLATION OF LAW FOR ANY PERSON, UNLESS THEY ARE ACTING UNDER THE DIRECTION OF A LICENSED PROFESSIONAL ENGINEER, TO ALTER THIS DOCUMENT.

DRAWN BY:	CHECKED BY:	APPROVED BY:
MW	MBD	MBD

RFDS REV #: 2 ISSUED: 06/28/2022

**ZONING
DRAWINGS**

SUBMITTALS		
REV	DATE	DESCRIPTION
A	09/13/2022	90% ZD'S
0	10/07/2022	100% ZD'S

A&E PROJECT NUMBER
11700267

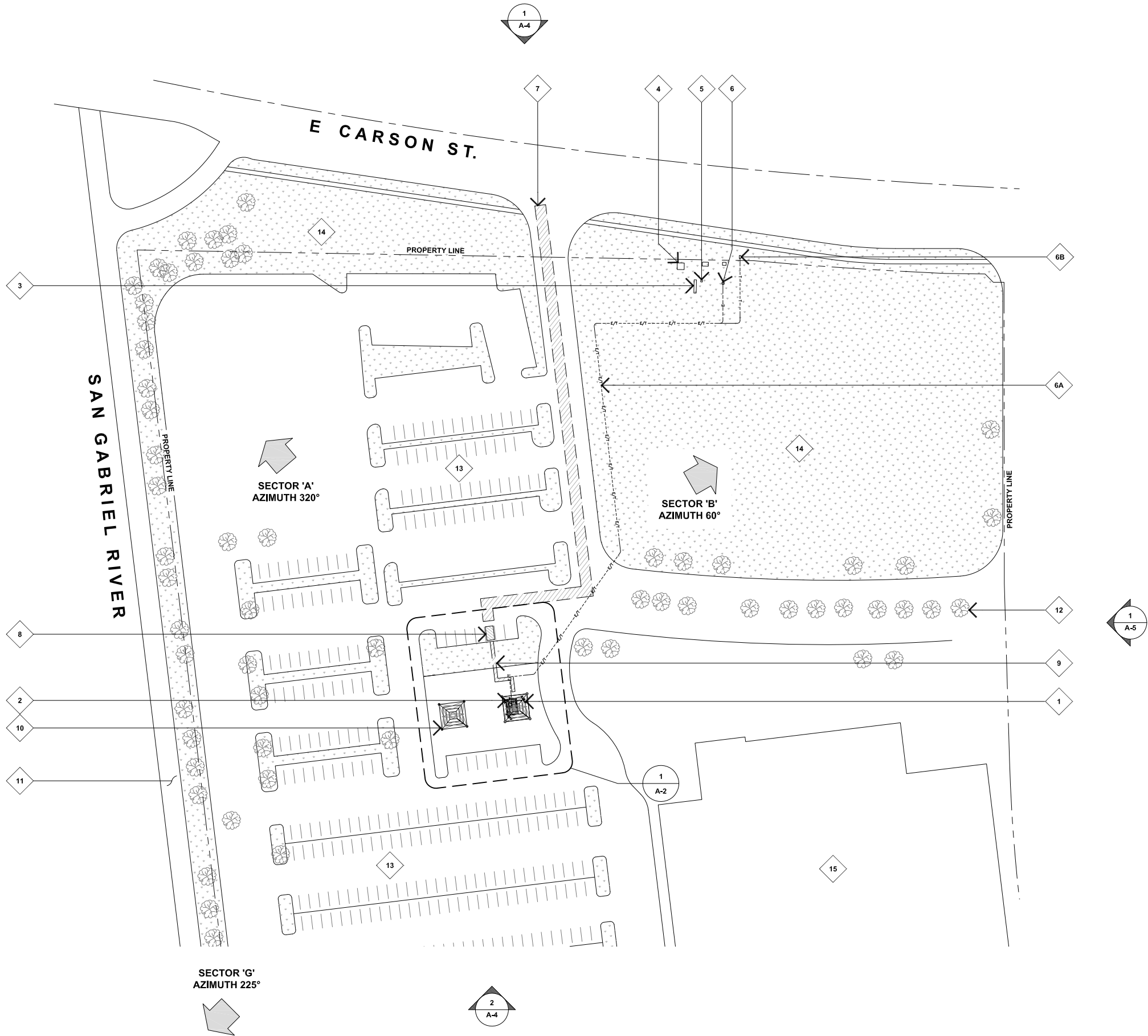
DISH WIRELESS PROJECT INFORMATION
LALAX04053B
7250 CARSON BLVD.
LONG BEACH, CA 90808

SHEET TITLE
**1-A ACCURACY
CERTIFICATION**

SHEET NUMBER
1-A

KEYNOTES

- 1 (P) DISH WIRELESS PANEL ANTENNAS, RRU'S AND RAYCAP MOUNTED ON (E) SCE TOWER, TYP., SEE 1/A-3.
- 2 (P) DISH WIRELESS 10'-0" X 15'-0" EQUIPMENT LEASE AREA UNDER (E) SCE TOWER, SEE A-3.1.
- 3 (E) SIGN.
- 4 (E) TRANSFORMER, TYP.
- 5 (E) METER PEDESTAL.
- 6 (P) DISH WIRELESS METER PEDESTAL.
- 6A (P) DISH WIRELESS POWER AND FIBER CONDUITS IN JOINT TRENCH ROUTED FROM P.O.C. TO (P) DISH WIRELESS LEASE AREA.
- 6B (P) FIBER MMP HAND HOLE LOCATED IN THE PUBLIC RIGHT OF WAY, (P) P.O.C. FOR DISH WIRELESS FIBER SERVICE.
- 7 (P) 10' WIDE VEHICULAR ACCESS PATH FROM PUBLIC RIGHT OF WAY TO A NON-EXCLUSIVE PARKING SPACE.
- 8 (P) NON-EXCLUSIVE PARKING SPACE.
- 9 (P) PEDESTRIAN ACCESS PATH TO (P) DISH WIRELESS LEASE AREA.
- 10 (E) SCE TOWER, TYP.
- 11 (E) CONCRETE SIDEWALK.
- 12 (E) TREE, TYP.
- 13 (E) PARKING LOT, TYP.
- 14 (E) RAW LAND.
- 15 (E) BUILDING.



16812 ARMSTRONG AVENUE
SUITE 200
IRVINE, CA, 92606



17260 NEWHOPE ST., FOUNTAIN VALLEY, CA 92708
PHONE: (714) 752-4263 FAX: (949) 760-3931

IT IS A VIOLATION OF LAW FOR ANY PERSON, UNLESS THEY ARE ACTING UNDER THE DIRECTION OF A LICENSED PROFESSIONAL ENGINEER, TO ALTER THIS DOCUMENT.

DRAWN BY:	CHECKED BY:	APPROVED BY:
MW	MBD	MBD

RFDS REV #: 2 ISSUED: 06/28/2022

ZONING DRAWINGS

SUBMITTALS		
REV	DATE	DESCRIPTION
A	09/13/2022	90% ZD'S
0	10/07/2022	100% ZD'S

A&E PROJECT NUMBER
11700267

DISH WIRELESS PROJECT INFORMATION
LALAX04053B
7250 CARSON BLVD.
LONG BEACH, CA 90808

SHEET TITLE
SITE PLAN

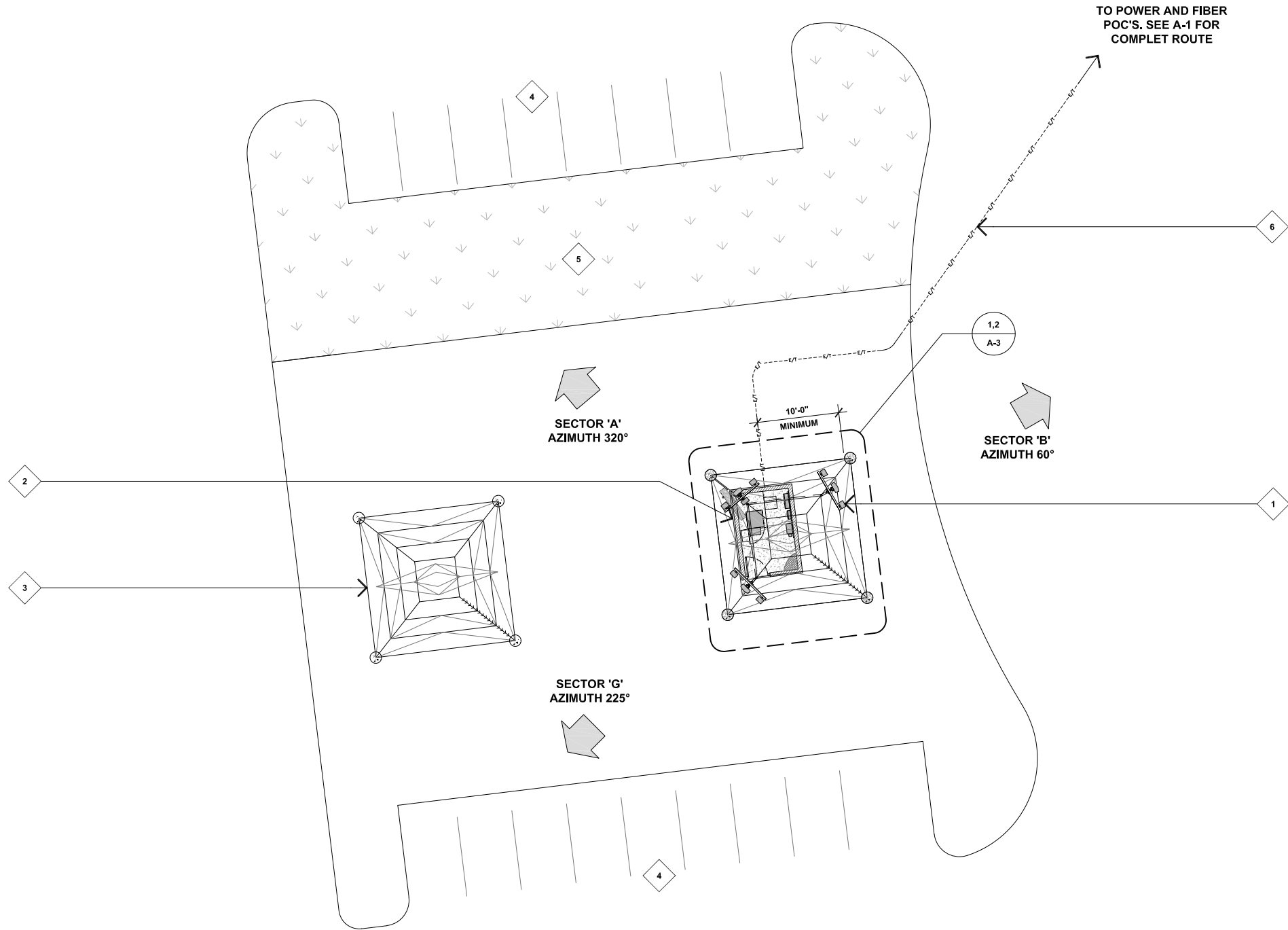
SHEET NUMBER
A-1

SITE PLAN

11x17 SCALE: 1"=100'
24x36 SCALE: 1"=50'

KEYNOTES

- 1 (P) DISH WIRELESS PANEL ANTENNAS, RRU'S AND RAYCAP MOUNTED ON (E) SCE TOWER, TYP., SEE 1/A-3.
- 2 (P) DISH WIRELESS 10'-0" X 15'-0" EQUIPMENT LEASE AREA UNDER (E) SCE TOWER, SEE 2/A-3.
- 3 (E) SCE TOWER, TYP.
- 4 (E) PARKING SPACES, TYP.
- 5 (E) LANDSCAPE AREA.
- 6 (N) DISH WIRELESS UNDERGROUND FIBER CONDUIT FROM P.O.C. TO (N) DISH WIRELESS LEASE AREA.



16812 ARMSTRONG AVENUE
SUITE 200
IRVINE, CA, 92606



17260 NEWHOPE ST., FOUNTAIN VALLEY, CA 92708
PHONE: (714) 752-4263 FAX: (949) 760-3931

IT IS A VIOLATION OF LAW FOR ANY PERSON, UNLESS THEY ARE ACTING UNDER THE DIRECTION OF A LICENSED PROFESSIONAL ENGINEER, TO ALTER THIS DOCUMENT.

DRAWN BY:	CHECKED BY:	APPROVED BY:
MW	MBD	MBD

RFDS REV #: 2 ISSUED: 06/28/2022

ZONING DRAWINGS

SUBMITTALS		
REV	DATE	DESCRIPTION
A	09/13/2022	90% ZD'S
0	10/07/2022	100% ZD'S

A&E PROJECT NUMBER
11700267

DISH WIRELESS PROJECT INFORMATION
LALAX04053B
7250 CARSON BLVD.
LONG BEACH, CA 90808

SHEET TITLE
ENLARGED SITE PLAN

SHEET NUMBER
A-2

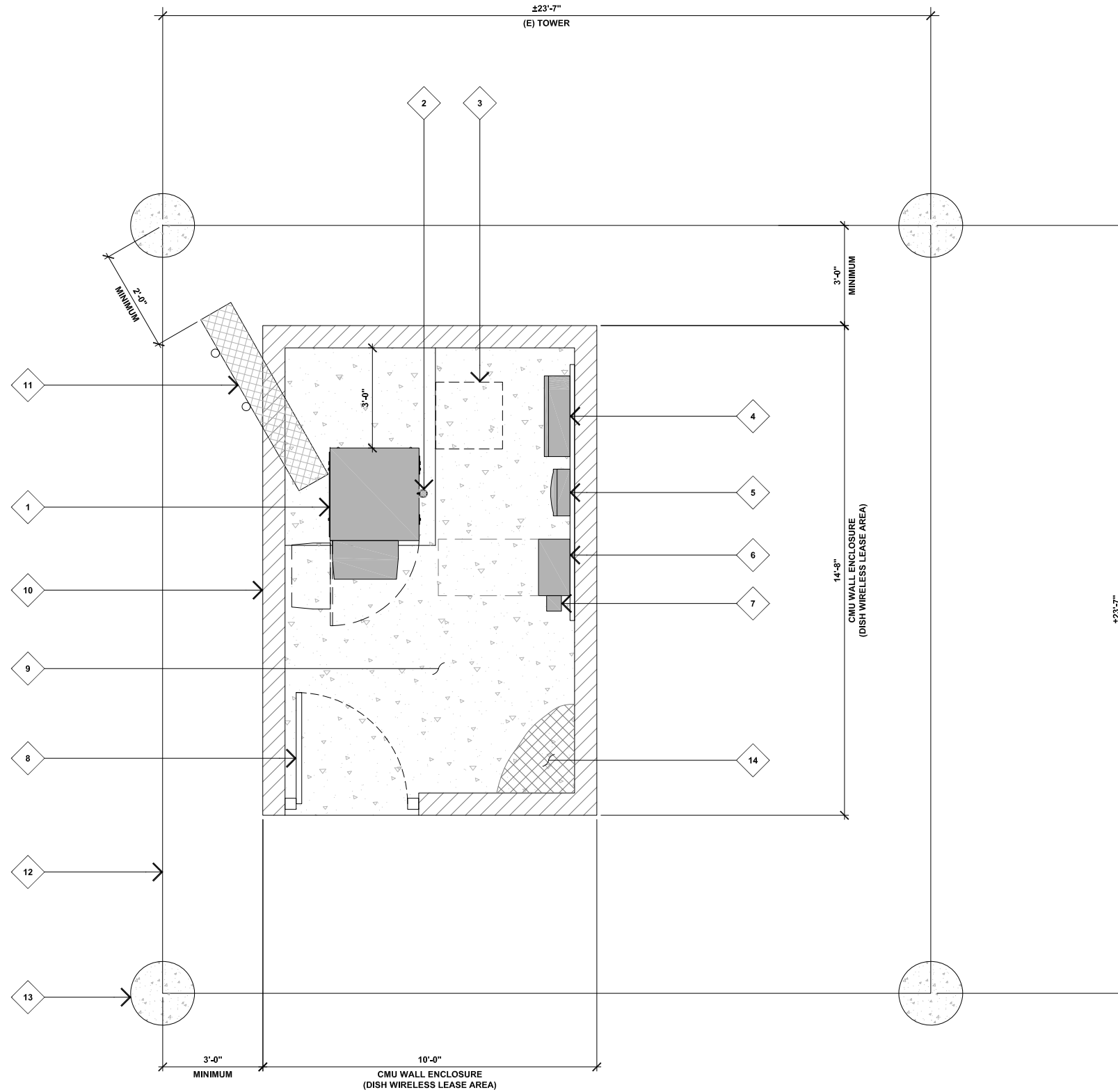
ENLARGED SITE PLAN

11x17 SCALE: 3/64"=1'-0"
24x36 SCALE: 3/32"=1'-0"

KEYNOTES

- 1 (P) DISH WIRELESS EQUIPMENT CABINET ON (P) HOUSE KEEPING PAD.
- 2 (P) DISH WIRELESS GPS ANTENNA MOUNTED ON (P) EQUIPMENT CABINET.
- 3 (P) DISH WIRELESS STEP DOWN TRANSFORMER (IF REQUIRED).
- 4 (P) DISH WIRELESS FIBER ENCLOSURE MOUNTED ON (P) CMU WALL.
- 5 (P) DISH WIRELESS CIENA BOX (IF REQUIRED) MOUNTED ON (P) CMU WALL.
- 6 (P) DISH WIRELESS POWER PROTECTIVE CABINET MOUNTED ON (P) CMU WALL.
- 7 (P) DISH WIRELESS GEN PLUG.
- 8 (P) 4'-0" WIDE SINGLE SWING SOLID METAL ACCESS GATE WITH LOCK.
- 9 (P) DISH WIRELESS CONCRETE SLAB.
- 10 (P) 8'-0" HIGH CMU WALL ENCLOSURE WITH SECURITY LID. WALL TO BE MINIMUM OF 24" CLEAR FROM EXISTING TOWER STEEL.
- 11 (P) CABLE ICE BRIDGE FROM EQUIPMENT CABINET TO (E) RISER LEG. BOTTOM OF ICE BRIDGE TO BE ROUTED ABOVE (P) WALL, (P) ICE BRIDGE TO BE 9'-0" AGL AND 24" FROM TOWER STEEL, MINIMUM.
- 12 (E) SCE TOWER FRAMING.
- 13 (E) CONCRETE TOWER CAISSONS, TYP.
- 14 (N) CHAIN LINK FENCE SECURITY TOPPER OVER CMU WALL EQUIPMENT ENCLOSURE.

NOTE:
 (P) CMU WALL AND ICE BRIDGE TO BE A MINIMUM OF 24" FROM EXISTING TOWER STEEL.
 ALL UNDERGROUND CONDUITS TO BE A MINIMUM OF 10'-0" CLEAR FROM EXISTING TOWER CAISSONS.



16812 ARMSTRONG AVENUE
 SUITE 200
 IRVINE, CA, 92606



17260 NEWHOPE ST., FOUNTAIN VALLEY, CA 92708
 PHONE: (714) 752-4263 FAX: (949) 760-3931

IT IS A VIOLATION OF LAW FOR ANY PERSON, UNLESS THEY ARE ACTING UNDER THE DIRECTION OF A LICENSED PROFESSIONAL ENGINEER, TO ALTER THIS DOCUMENT.

DRAWN BY:	CHECKED BY:	APPROVED BY:
MW	MBD	MBD

RFDS REV #: 2 ISSUED: 06/28/2022

ZONING DRAWINGS

SUBMITTALS		
REV	DATE	DESCRIPTION
A	09/13/2022	90% ZD'S
0	10/07/2022	100% ZD'S

A&E PROJECT NUMBER
11700267

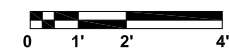
DISH WIRELESS PROJECT INFORMATION
LALAX04053B
 7250 CARSON BLVD.
 LONG BEACH, CA 90808

SHEET TITLE
PROPOSED EQUIPMENT LAYOUT PLAN

SHEET NUMBER
A-3

PROPOSED EQUIPMENT LAYOUT PLAN

11X17 SCALE: 1/4"=1'-0"
 24X36 SCALE: 1/2"=1'-0"



KEYNOTES

- 1 (N) DISH WIRELESS 6 FT PANEL ANTENNAS, TYP. (1) PER SECTOR, (3) TOTAL MOUNTED ON (N) ANTENNA MOUNTING PIPE. SEE DETAILS 1/A-6 AND 5/A-6.
- 2 (N) DISH WIRELESS RRU'S, TYP. (2) PER SECTOR, (6) TOTAL MOUNTED ON (N) ANTENNA MOUNTING PIPE. SEE DETAILS 2/A-6, 3/A-6 AND 6/A-6.
- 3 (P) DISH WIRELESS RAYCAP SURGE SUPPRESSOR MOUNTED ON (P) PIVOT POST BRACKET, TYP. OF (1) TOTAL. SEE DETAIL 4/A-6.
- 4 (P) DISH WIRELESS ANTENNA MOUNTING FRAME, TYP.
- 5 (P) DISH WIRELESS HYPERFLEX CABLE ROUTED UP RISER LEG TO ANTENNAS ABOVE.
- 6 (P) DISH WIRELESS HYPERFLEX CABLE ROUTED ON HORIZONTAL TOWER MEMBERS TO (P) ANTENNA SECTORS, TYP.
- 7 (P) VERTICAL MOUNTING PIPE PROVIDED BY SCE, TYP.
- 8 (E) TOWER CLIMBING LEG. (NO WORK ALLOWED ON THIS LEG)
- 9 (E) SCE TOWER FRAMING.
- 10 (E) CONCRETE TOWER CAISSON BELOW, TYP. OF (4).

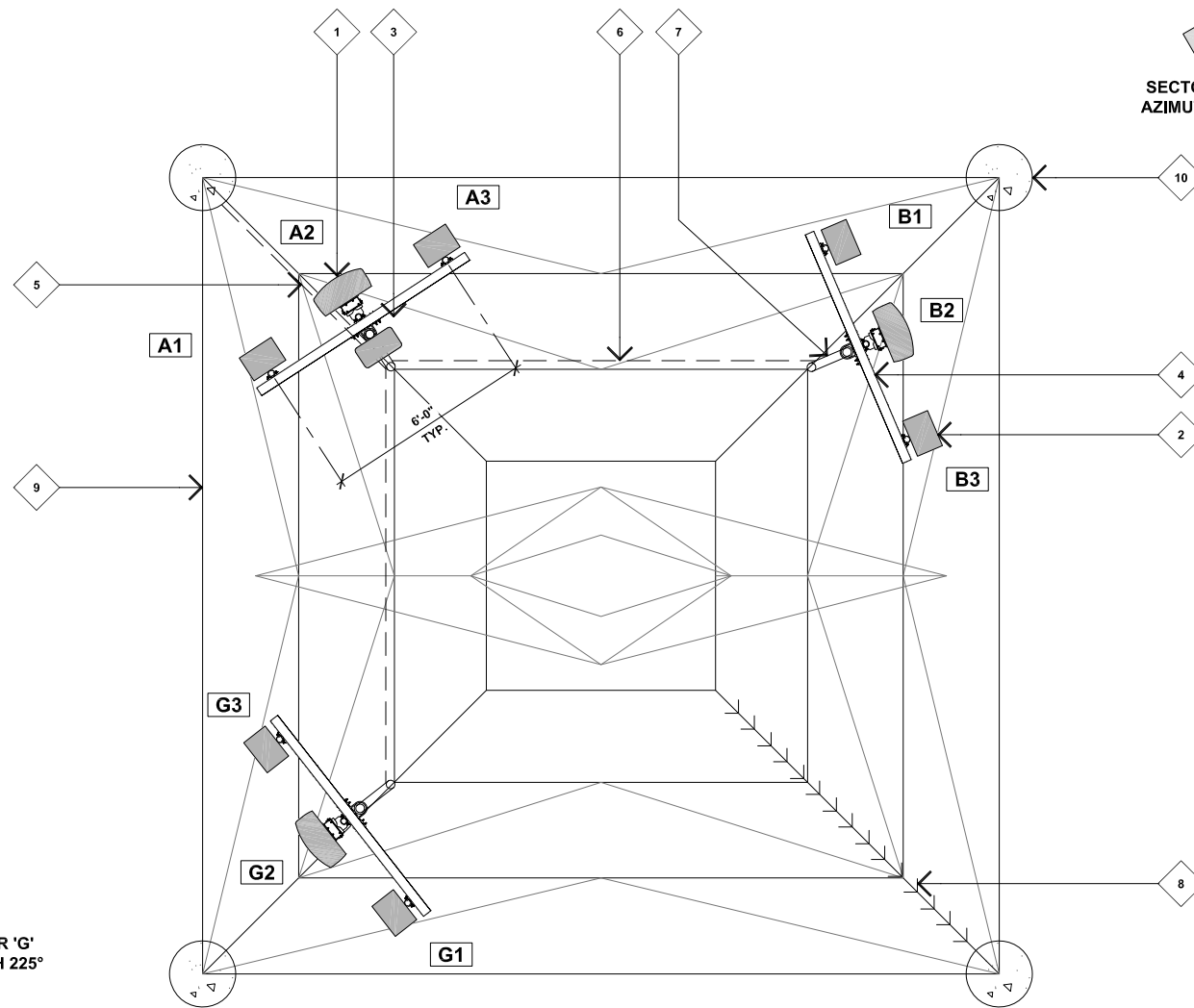
ANTENNA AND EQUIPMENT SCHEDULE										
POSITION	ANTENNA	ANTENNA TECHNOLOGY	AZIMUTH	RAD CENTER	RADIO	RRH TECHNOLOGY	RAYCAP	NO. OF COAX/HYBRID RUNS	CABLE DIAMETER/WEIGHT	COAX LENGTH (APPROX.)
A1	-	-	-	-	TA08025-B604 RRH *	MULTIBAND	-	1	1.411" 1.658 LBS/FT	±77'-0"
A2	MX08FR0665-21	NR	320°	47'-0"	-	-	-			
A3	-	-	-	-	TA08025-B605 RRH **	MULTIBAND	-			
B1	-	-	-	-	TA08025-B604 RRH *	MULTIBAND	-			
B2	MX08FR0665-21	NR	60°	47'-0"	-	-	RDIDC-9181-PF-48			
B3	-	-	-	-	TA08025-B605 RRH **	MULTIBAND	-			
G1	-	-	-	-	TA08025-B604 RRH *	MULTIBAND	-			
G2	MX08FR0665-21	NR	225°	47'-0"	-	-	-			
G3	-	-	-	-	TA08025-B605 RRH **	MULTIBAND	-			
	SIZE	WEIGHT			TYPE	SIZE	WEIGHT	SIZE	WEIGHT	
	72.0" x 20.0" x 8.0"	82.5 LBS			*	14.9"x15.7"x7.8"	77.31 LBS	18.98"x15.7"x7.8"	21.82 LBS	
					**	14.9"x15.7"x9.0"	88.36 LBS			

NOTE:
EQUIPMENT WEIGHTS LISTED INCLUDE THE WEIGHT OF THE MOUNTING HARDWARE.

SECTOR 'A'
AZIMUTH 320°

SECTOR 'B'
AZIMUTH 60°

SECTOR 'G'
AZIMUTH 225°



16812 ARMSTRONG AVENUE
SUITE 200
IRVINE, CA, 92606



17260 NEWHOPE ST., FOUNTAIN VALLEY, CA 92708
PHONE: (714) 752-4263 FAX: (949) 760-3931

IT IS A VIOLATION OF LAW FOR ANY PERSON, UNLESS THEY ARE ACTING UNDER THE DIRECTION OF A LICENSED PROFESSIONAL ENGINEER, TO ALTER THIS DOCUMENT.

DRAWN BY:	CHECKED BY:	APPROVED BY:
MW	MBD	MBD

RFDS REV #: 2 ISSUED: 06/28/2022

ZONING DRAWINGS

SUBMITTALS		
REV	DATE	DESCRIPTION
A	09/13/2022	90% ZD'S
0	10/07/2022	100% ZD'S

A&E PROJECT NUMBER
11700267

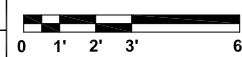
DISH WIRELESS PROJECT INFORMATION
LALAX04053B
7250 CARSON BLVD.
LONG BEACH, CA 90808

SHEET TITLE
PROPOSED ANTENNA LAYOUT PLAN

SHEET NUMBER
A3.1

PROPOSED ANTENNA LAYOUT PLAN

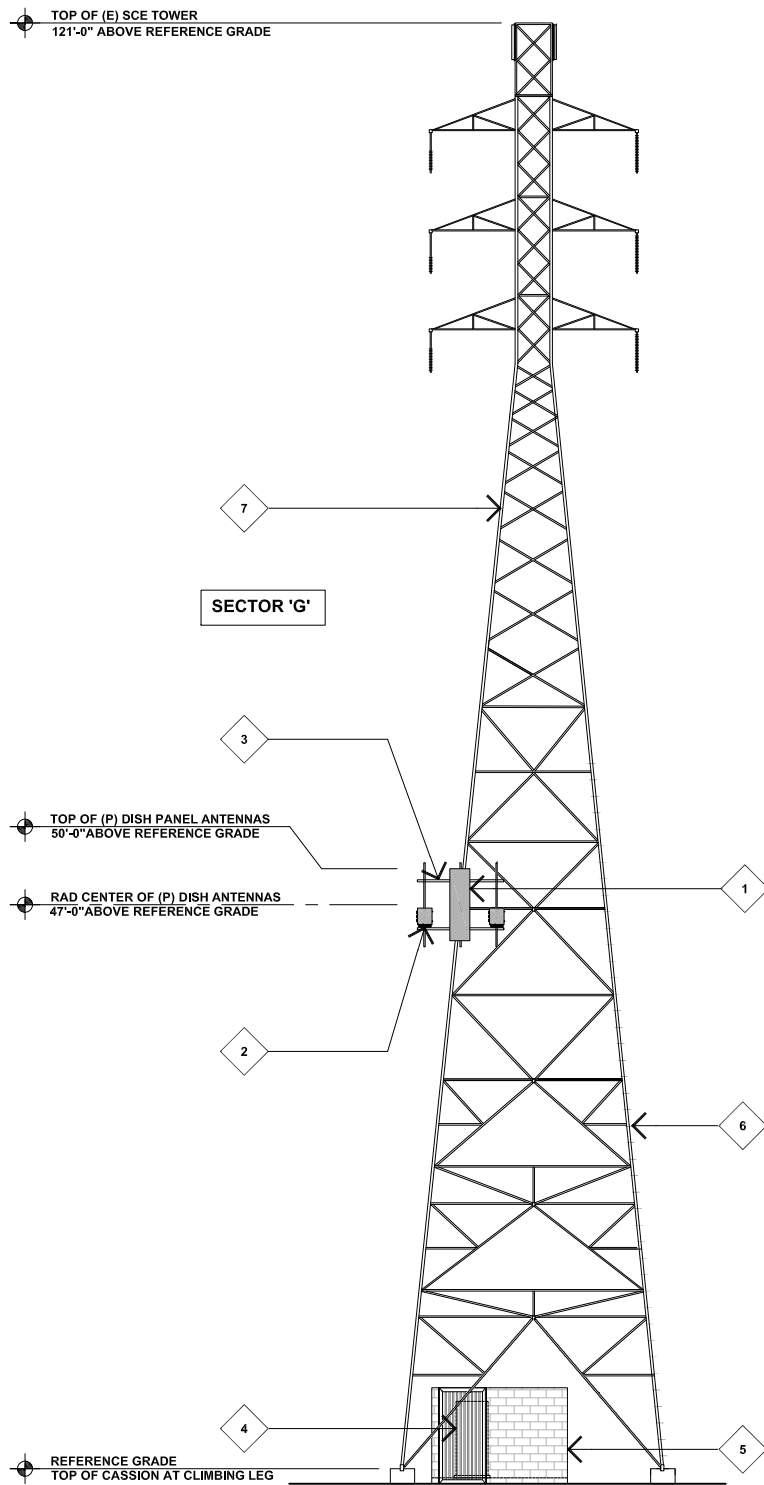
11x17 SCALE: 3/16"=1'-0"
24x36 SCALE: 3/8"=1'-0"



1

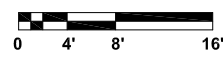
KEYNOTES

- 1 (P) DISH WIRELESS 6' PANEL ANTENNAS, TYP. (1) PER SECTOR, (3 TOTAL).
- 2 (P) DISH WIRELESS RRU'S, TYP. (2) PER SECTOR, (6 TOTAL)
- 3 (P) DISH WIRELESS ANTENNA MOUNTING FRAME.
- 4 (P) DISH WIRELESS EQUIPMENT CABINET ON (P) CONCRETE PAD.
- 5 (P) 8'-0" HIGH CMU ENCLOSURE WITH SECURITY LID, CMU WALL TO BE MINIMUM OF 24" CLEAR FROM EXISTING TOWER STEEL.
- 6 (E) TOWER CLIMBING LEG.
- 7 (E) SCE TOWER.



PROPOSED SOUTH ELEVATION

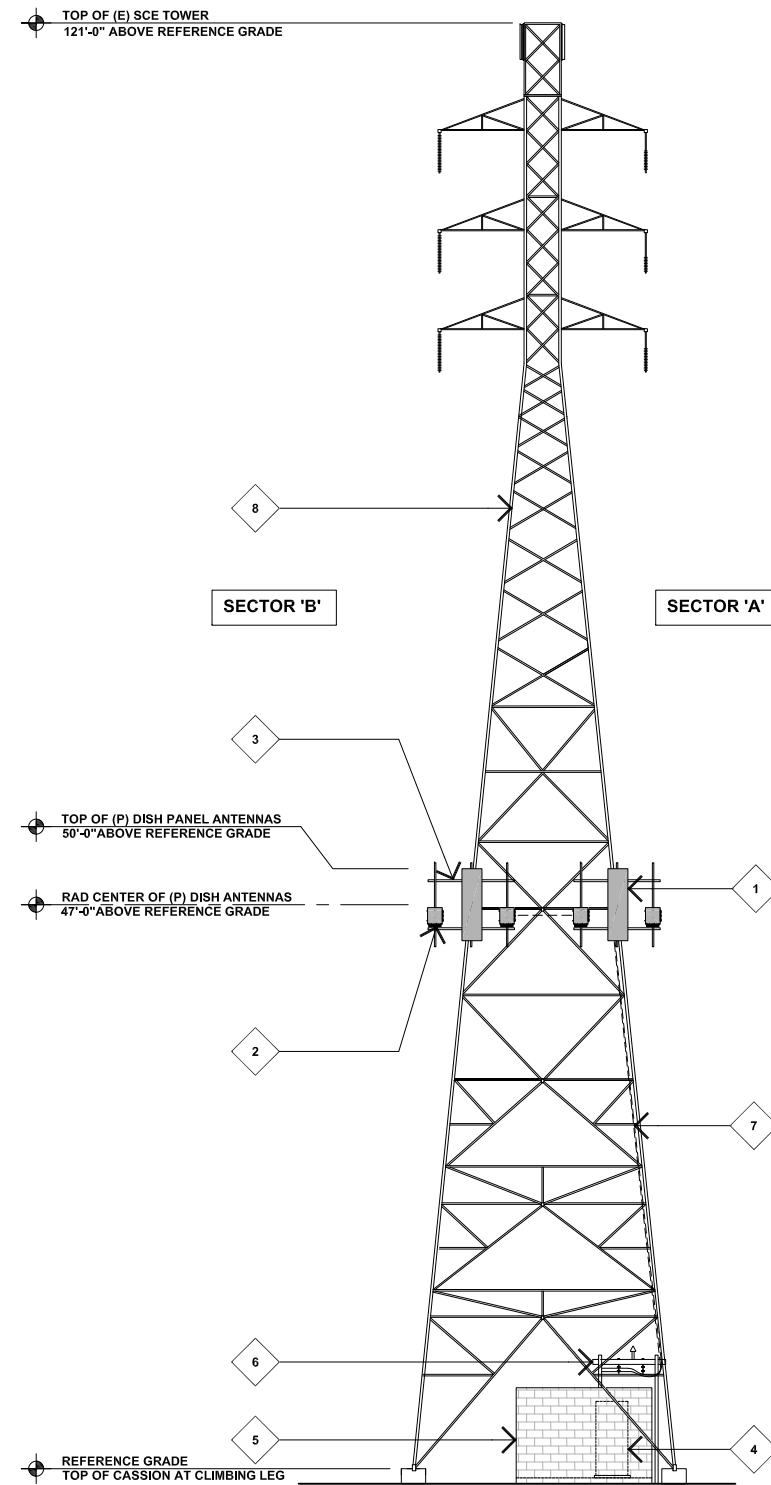
11x17 SCALE: 1/16"=1'-0"
24x36 SCALE: 1/8"=1'-0"



2

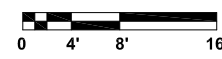
KEYNOTES

- 1 (P) DISH WIRELESS 6' PANEL ANTENNAS, TYP. (1) PER SECTOR, (3 TOTAL).
- 2 (P) DISH WIRELESS RRU'S, TYP. (2) PER SECTOR, (6 TOTAL)
- 3 (P) DISH WIRELESS ANTENNA MOUNTING FRAME.
- 4 (P) DISH WIRELESS EQUIPMENT CABINET ON (P) CONCRETE PAD.
- 5 (P) 8'-0" HIGH CMU ENCLOSURE WITH SECURITY LID, CMU WALL TO BE MINIMUM OF 24" CLEAR FROM EXISTING TOWER STEEL.
- 6 (P) CABLE ICE BRIDGE FROM EQUIPMENT CABINET TO (E) RISER LEG, (P) ICE BRIDGE TO BE 9'-0" AGL AND 24" MINIMUM FROM TOWER STEEL.
- 7 (P) DISH WIRELESS HYPERFLEX CABLE ROUTED UP (E) RISER LEG TO ANTENNAS ABOVE.
- 8 (E) SCE TOWER.



PROPOSED NORTH ELEVATION

11x17 SCALE: 1/16"=1'-0"
24x36 SCALE: 1/8"=1'-0"



1



16812 ARMSTRONG AVENUE
SUITE 200
IRVINE, CA, 92606



17260 NEWHOPE ST., FOUNTAIN VALLEY, CA 92708
PHONE: (714) 752-4263 FAX: (949) 760-3931

IT IS A VIOLATION OF LAW FOR ANY PERSON, UNLESS THEY ARE ACTING UNDER THE DIRECTION OF A LICENSED PROFESSIONAL ENGINEER, TO ALTER THIS DOCUMENT.

DRAWN BY:	CHECKED BY:	APPROVED BY:
MW	MBD	MBD

RFDS REV #: 2 ISSUED: 06/28/2022

ZONING DRAWINGS

SUBMITTALS		
REV	DATE	DESCRIPTION
A	09/13/2022	90% ZD'S
0	10/07/2022	100% ZD'S

A&E PROJECT NUMBER
11700267

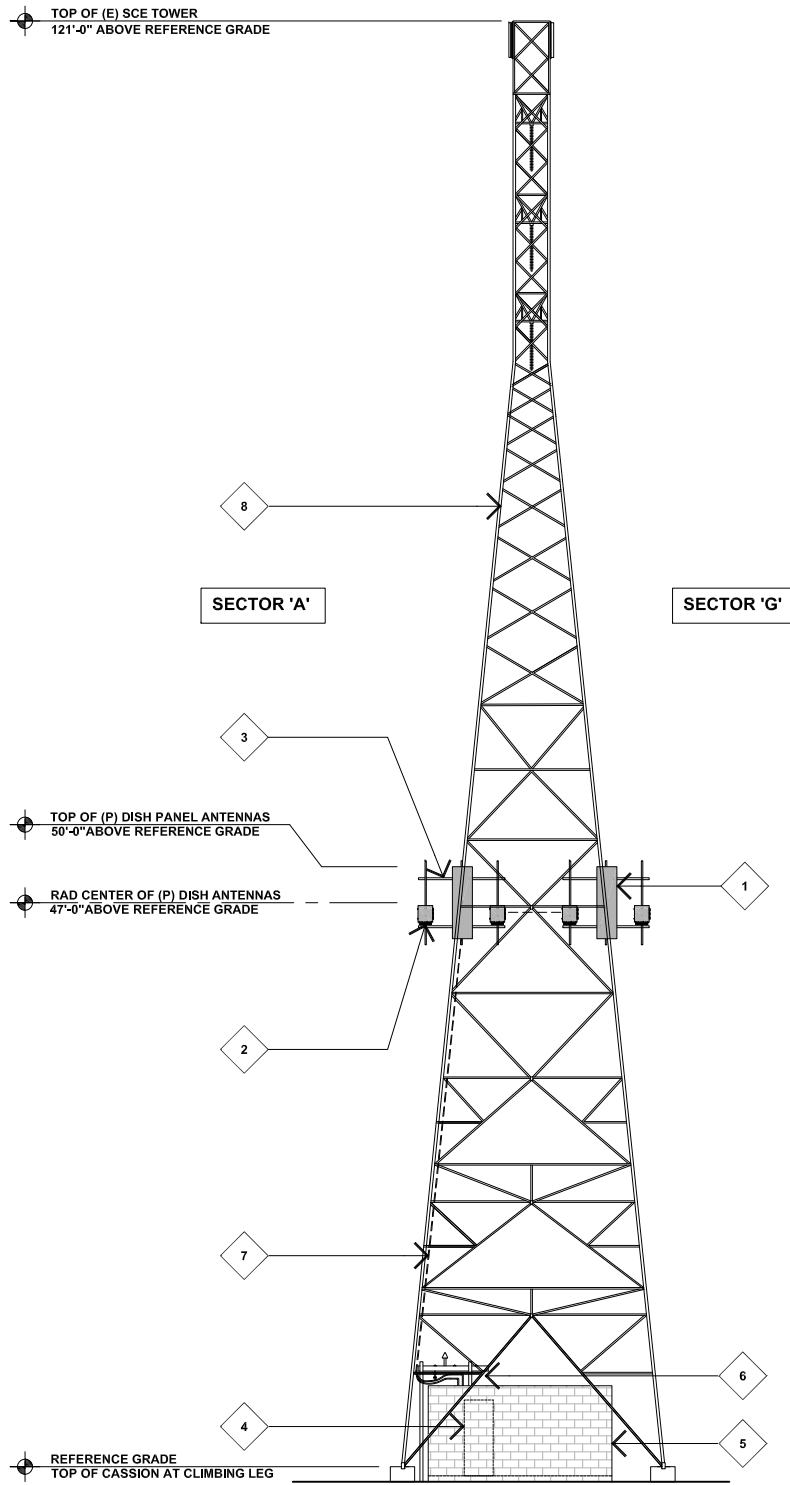
DISH WIRELESS PROJECT INFORMATION
LALAX04053B
7250 CARSON BLVD.
LONG BEACH, CA 90808

SHEET TITLE
PROPOSED SOUTH AND NORTH ELEVATIONS

SHEET NUMBER
A-4

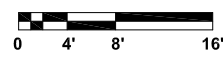
KEYNOTES

- 1 (P) DISH WIRELESS 6' PANEL ANTENNAS, TYP. (1) PER SECTOR, (3 TOTAL).
- 2 (P) DISH WIRELESS RRU'S, TYP. (2) PER SECTOR, (6 TOTAL)
- 3 (P) DISH WIRELESS ANTENNA MOUNTING FRAME.
- 4 (P) DISH WIRELESS EQUIPMENT CABINET ON (P) CONCRETE PAD.
- 5 (P) 8'-0" HIGH CMU ENCLOSURE WITH SECURITY LID, CMU WALL TO BE MINIMUM OF 24" CLEAR FROM EXISTING TOWER STEEL.
- 6 (P) CABLE ICE BRIDGE FROM EQUIPMENT CABINET TO (E) RISER LEG. (P) ICE BRIDGE TO BE 9'-0" AGL AND 24" MINIMUM FROM TOWER STEEL.
- 7 (P) DISH WIRELESS HYPERFLEX CABLE ROUTED UP (E) RISER LEG TO ANTENNAS ABOVE.
- 8 (E) SCE TOWER.



PROPOSED WEST ELEVATION

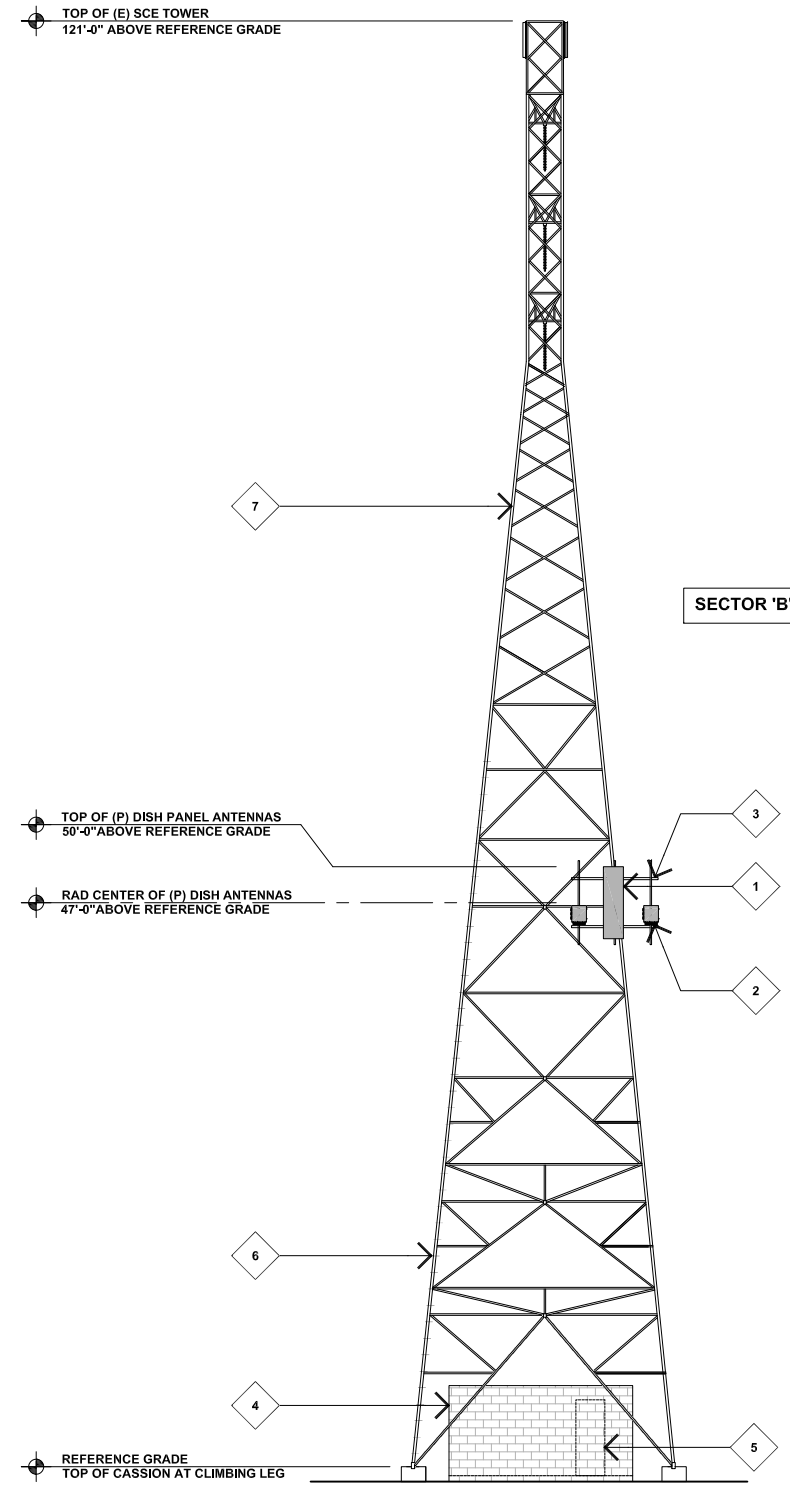
11x17 SCALE: 1/16"=1'-0"
24x36 SCALE: 1/8"=1'-0"



2

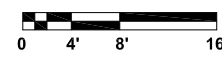
KEYNOTES

- 1 (P) DISH WIRELESS 6' PANEL ANTENNAS, TYP. (1) PER SECTOR, (3 TOTAL).
- 2 (P) DISH WIRELESS RRU'S, TYP. (2) PER SECTOR, (6 TOTAL)
- 3 (P) DISH WIRELESS ANTENNA MOUNTING FRAME.
- 4 (P) 8'-0" HIGH CMU ENCLOSURE WITH SECURITY LID, CMU WALL TO BE MINIMUM OF 24" CLEAR FROM EXISTING TOWER STEEL.
- 5 (P) DISH WIRELESS EQUIPMENT CABINET ON (P) CONCRETE PAD.
- 6 (E) TOWER CLIMBING LEG.
- 7 (E) SCE TOWER.



PROPOSED EAST ELEVATION

11x17 SCALE: 1/16"=1'-0"
24x36 SCALE: 1/8"=1'-0"



1



16812 ARMSTRONG AVENUE
SUITE 200
IRVINE, CA, 92606



17260 NEWHOPE ST., FOUNTAIN VALLEY, CA 92708
PHONE: (714) 752-4263 FAX: (949) 760-3931

IT IS A VIOLATION OF LAW FOR ANY PERSON, UNLESS THEY ARE ACTING UNDER THE DIRECTION OF A LICENSED PROFESSIONAL ENGINEER, TO ALTER THIS DOCUMENT.

DRAWN BY:	CHECKED BY:	APPROVED BY:
MW	MBD	MBD

RFDS REV #: 2 ISSUED: 06/28/2022

ZONING DRAWINGS

SUBMITTALS		
REV	DATE	DESCRIPTION
A	09/13/2022	90% ZD'S
0	10/07/2022	100% ZD'S

A&E PROJECT NUMBER
11700267

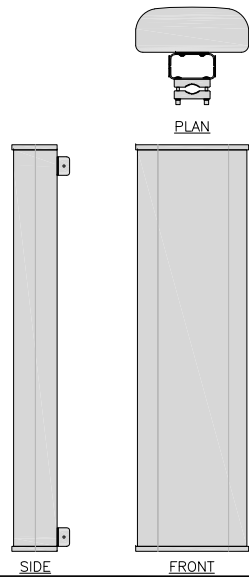
DISH WIRELESS PROJECT INFORMATION
LALAX04053B
7250 CARSON BLVD.
LONG BEACH, CA 90808

SHEET TITLE
PROPOSED WEST AND EAST ELEVATIONS

SHEET NUMBER
A-5

JMA WIRELESS MX08FRO665-21	
DIMENSIONS (HxWxD)	72"x20.0"x8.0"
RF PORTS, CONNECTOR TYPE	8 x 4.3-10 FEMALE
WEIGHT (INCLUDE MOUNTING HARDWARE)	82.5 lbs

NOTE:
EQUIPMENT WEIGHTS LISTED INCLUDE THE WEIGHT OF THE MOUNTING HARDWARE.

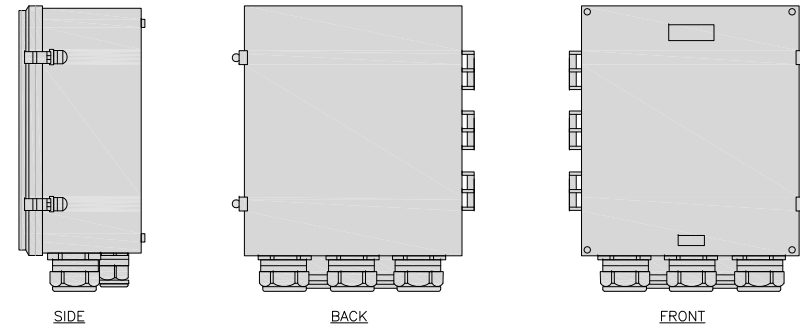


ANTENNA DETAIL

SCALE
N.T.S. **1**

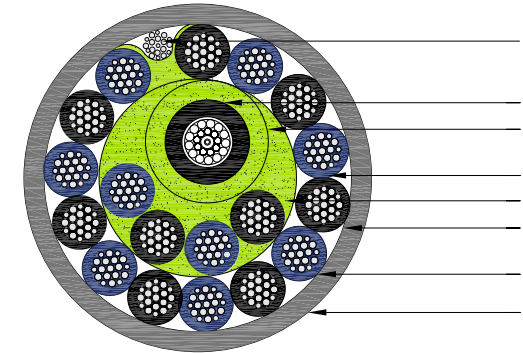
RAYCAP RDIDC-9181-PF-48 DC SURGE PROTECTION	
DIMENSIONS (HxWxD)	18.98"x14.39"x8.15"
WEIGHT (INCLUDE MOUNTING HARDWARE)	21.82 LBS

NOTE:
EQUIPMENT WEIGHTS LISTED INCLUDE THE WEIGHT OF THE MOUNTING HARDWARE.



SURGE SUPPRESSION DETAIL

SCALE
N.T.S. **4**



CABLES UNLIMITED HYPERFLEX CABLE
6 AWG 18 C+ 24CH SMF + UNINS GND
BARE COPPER SHIELD (UL) TC-OF-ER 600V 90° C DRY/WET

SIZE: 1.411 DIAMETER
WEIGHT: 1.658 LBS/FOOT
COLOR: BLACK

LEGEND:

- A. A. 24CH SM 900 UM INDOOR/OUTDOOR OFNR.
P/N: 9XB(24) 910RTH-00 (S091024CZNRBL-LC) NOMINAL OD: 0.380.
- B. B. FILLER + MYLAR TO SPACE FIBER AWAY FROM THE COPPER ELEMENTS.
- C. 6 AWG 18 CONDUCTORS BARE COPPER WITH POLYVINYLCHLORIDE/NYLON INSULATION.

SIZE & STRANDING: 6 AWG 19/ASTM B787
METAL TYPE: ANNEALED BARE COPPER
NORMINAL WIRE DIAMETER: 0.180

INSULATION TYPE: POLYVINYLCHLORIDE/NYLON
NORMINAL INSULATION THICKNESS: 0.030 / 0.006
NORMINAL CONDUCTO DIAMETER: 0.240 / 0.252
COLOR CODE: BLACK # 1-9, BLUE # 1-9

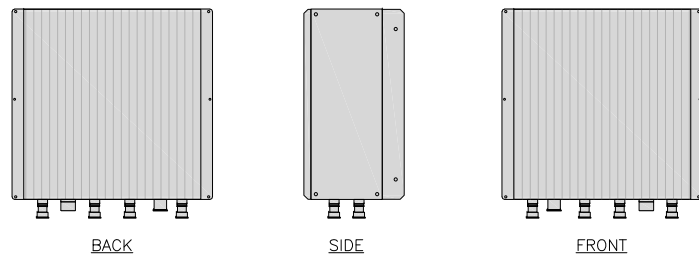
- D. NON-HYGROSCOPIC POLYPROPYLENE FILLERS.
- E. CLEAR MYLAR TAPE BINDER.
- F. 8 AWG 19 STRAND BARE COPPER UNINSULATED GROUND.
- G. 0.003 MIL THICK COPPER TAPE SHIELD HELICALLY APPLIED - 20% MINIMUM OVERLAP.
- H. POLYVINYLCHLORIDER JACKET, NOMINAL JACKET THICKNESS: 0.080, PRESSURE EXTRUDED.

HYPERFLEX CABLE

SCALE
N.T.S. **7**

FUJITSU DUAL BAND TA08025-B604	
DIMENSIONS (HxWxD)	14.9"x15.7"x7.8"
WEIGHT (INCLUDING MOUNTING HARDWARE)	77.31 lbs
CONNECTOR TYPE	4.3-10 RF CONNECTOR
POWER SUPPLY	DC -58~-36V

NOTE:
EQUIPMENT WEIGHTS LISTED INCLUDE THE WEIGHT OF THE MOUNTING HARDWARE.

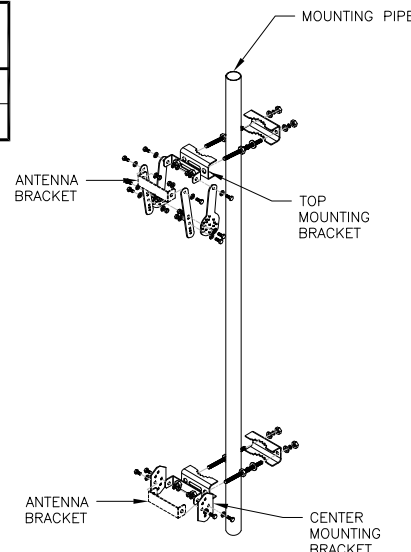


REMOTE RADIO HEAD DETAIL

SCALE
N.T.S. **2**

JMA ANTENNA MOUNT BRACKET #91900318	
TOTAL WEIGHT (WITH BRACKETS)	18 lbs (8.18 Kg)
POLE DIAMETER RANGE	2.5" TO 4.5"

NOTE:
KIT #91900318: TOP AND BOTTOM BRACKETS FOR 4-,6-, AND 8-FOOT ANTENNAS
ANTENNA BRACKET NOT PART OF KIT

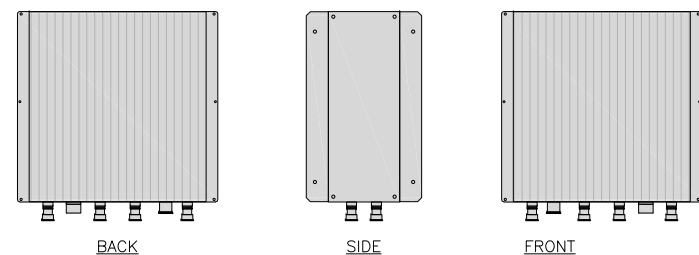


ANTENNA MOUNTING DETAIL

SCALE
N.T.S. **5**

FUJITSU TRIPLE BAND TA08025-B605	
DIMENSIONS (HxWxD)	14.9"x15.7"x9"
WEIGHT (INCLUDING MOUNTING HARDWARE)	88.36 lbs
CONNECTOR TYPE	4.3-10 RF CONNECTOR
POWER SUPPLY	DC -58~-36V

NOTE:
EQUIPMENT WEIGHTS LISTED INCLUDE THE WEIGHT OF THE MOUNTING HARDWARE.

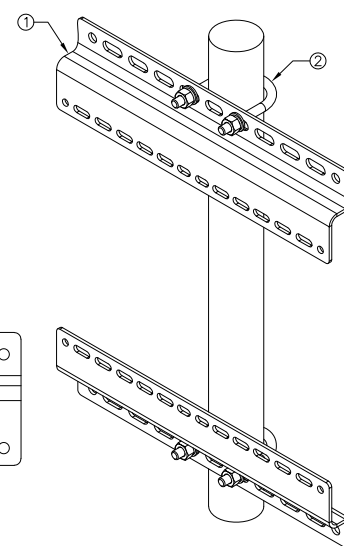
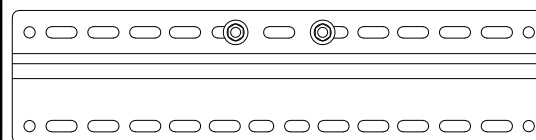


REMOTE RADIO HEAD DETAIL

SCALE
N.T.S. **3**

SABRE SINGLE Z-BRACKET C10123151	
DIMENSIONS (HxWxD) (1 BRACKET)	5"x20"x1-13/16"
WEIGHT (FULL ASSEMBLY)	13.41 lbs
PACKAGE QUANTITY	2

#	DESCRIPTION
1	RRH Z BRACKET, 3/16"
2	U-BOLT ASSEMBLY, 1/2" FOR 2-7/8" PIPE



REMOTE RADIO MOUNT DETAIL

SCALE
N.T.S. **6**

NOT USED

SCALE
N.T.S. **8**

dish
wireless™

16812 ARMSTRONG AVENUE
SUITE 200
IRVINE, CA, 92606

MOTIVE
INFRASTRUCTURE
SOLUTIONS

17260 NEWHOPE ST., FOUNTAIN VALLEY, CA 92708
PHONE: (714) 752-4263 FAX: (949) 760-3931

IT IS A VIOLATION OF LAW FOR ANY PERSON,
UNLESS THEY ARE ACTING UNDER THE DIRECTION
OF A LICENSED PROFESSIONAL ENGINEER,
TO ALTER THIS DOCUMENT.

DRAWN BY:	CHECKED BY:	APPROVED BY:
MW	MBD	MBD

RFDS REV #: 2 ISSUED: 06/28/2022

**ZONING
DRAWINGS**

SUBMITTALS		
REV	DATE	DESCRIPTION
A	09/13/2022	90% ZD'S
0	10/07/2022	100% ZD'S

A&E PROJECT NUMBER
11700267

DISH WIRELESS PROJECT INFORMATION
LALAX04053B
7250 CARSON BLVD.
LONG BEACH, CA 90808

SHEET TITLE
DETAILS

SHEET NUMBER
A-6