

C-16

December 3, 2019

HONORABLE MAYOR AND CITY COUNCIL
City of Long Beach
California

RECOMMENDATION:

Authorize the City Manager, or designee, to enter into an Access Agreement, including any necessary amendments, with the Los Angeles County Sanitation District No. 3, to allow access to the Drake/Chavez Greenbelt for maintenance operations. (District 1)

DISCUSSION

The Los Angeles County Sanitation District No. 3 (District) operates a ten-inch diameter connection trunk sewer line that traverses the recently developed Drake/Chavez Greenbelt (Park), located at 960 DeForest Avenue (Attachment A). The District has historically accessed and maintained the sewer line via an access road that has now been redeveloped as part of the Park, restricting the District's ability to access, operate, and maintain the sewer. An Access Agreement has been drafted to allow the District regular access to the sewer line.

The Agreement provides for the District to enter the property through the gate from the adjacent private property at 1200 Oregon Avenue to perform cleaning, inspection, and maintenance of the sewer. This arrangement eliminates the need for heavy equipment to enter the Park, protecting the Park improvements. Other key provisions of the new agreement include:

- Except in emergency situations, the District will provide the City with 48-hour notice before entering the Park.
- If the District's activities damage the Park surface, natural or artificial turf, landscaping, irrigation or any other Park improvements, the District will be solely responsible for restoring the Park to substantially the same condition that existed prior to District's activities.
- The City will not construct or install any new improvements that adversely impact the District's access without the written consent of the District.

This matter was reviewed by Deputy City Attorney Arturo D. Sanchez on October 28, 2019 and by Revenue Management Officer Geraldine Alejo on November 12, 2019.

TIMING CONSIDERATIONS

City Council action is requested on December 3, 2019, to provide District access for sewer maintenance purposes.

FISCAL IMPACT

This recommendation has no staffing impact beyond the budgeted scope of duties and is consistent with existing City Council priorities. There is no fiscal or local job impact associated with this recommendation.

SUGGESTED ACTION:

Approve recommendation.

Respectfully submitted,



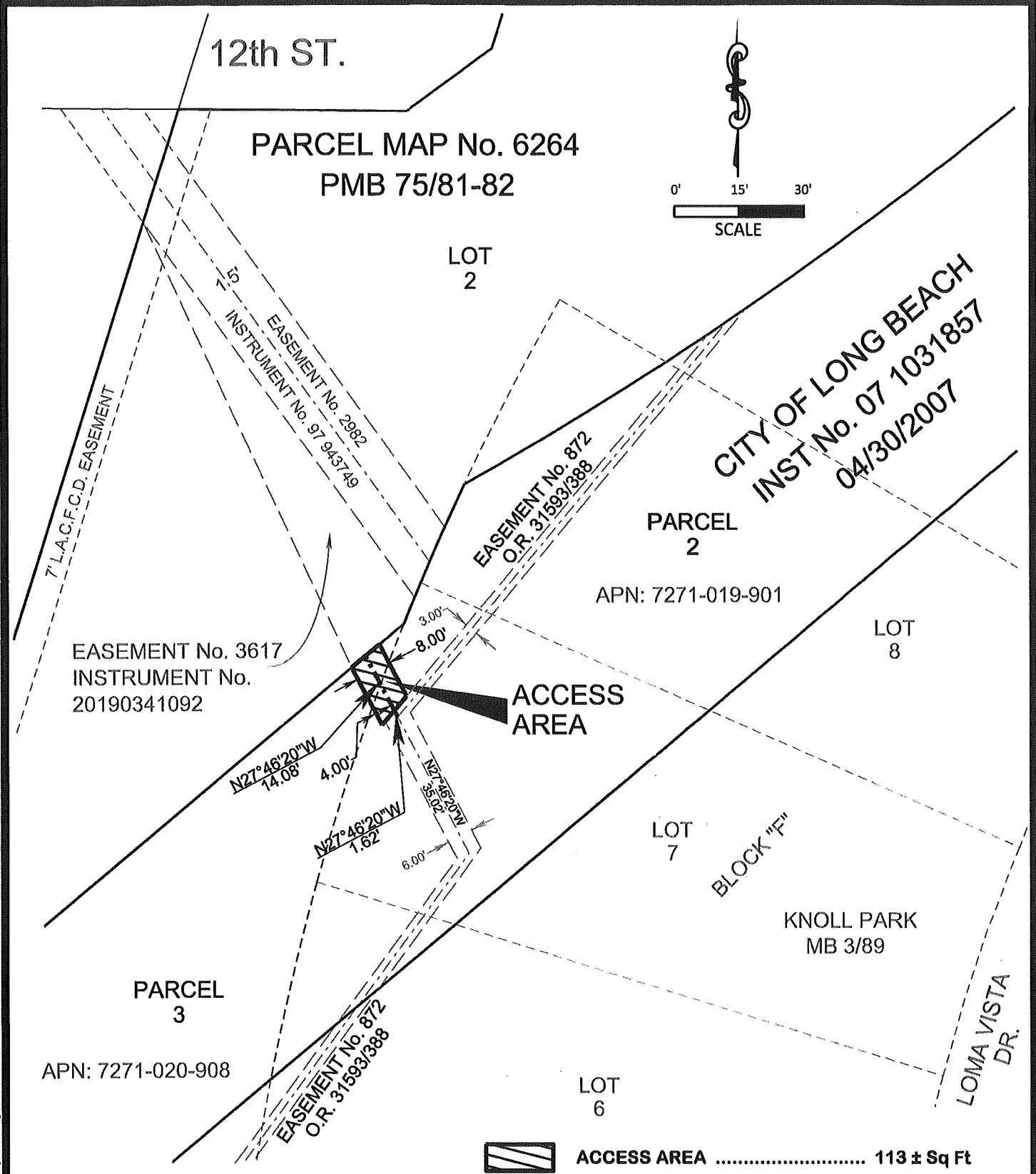
GERARDO MOUET
DIRECTOR OF PARKS, RECREATION AND MARINE

ATTACHMENT A

APPROVED:



THOMAS B. MODICA
ACTING CITY MANAGER



ACCESS AREA 113 ± Sq Ft

COUNTY SANITATION DISTRICT NO. 2
OF LOS ANGELES COUNTY, CALIFORNIA

FACILITY: PUMP DISTRICT NO. 5 CONNECTION TRUNK SEWER			
GRANTOR: CITY OF LONG BEACH			
GRANTEE: COUNTY SANITATION DISTRICT No. 3 OF LOS ANGELES COUNTY		ASSESSOR'S	7271-019-901
THOMAS GUIDE: 795 / C 6	DRAWING NO.: JO-p-306 / JO-p-54	PARCEL NO.:	7271-020-908