

Send To Printer Back To Transmitter Change to 1:1x17 Print Size Show Grid Lines Change to Landscape ZUSCS Long Beach, California, United States 29 Mar 2004

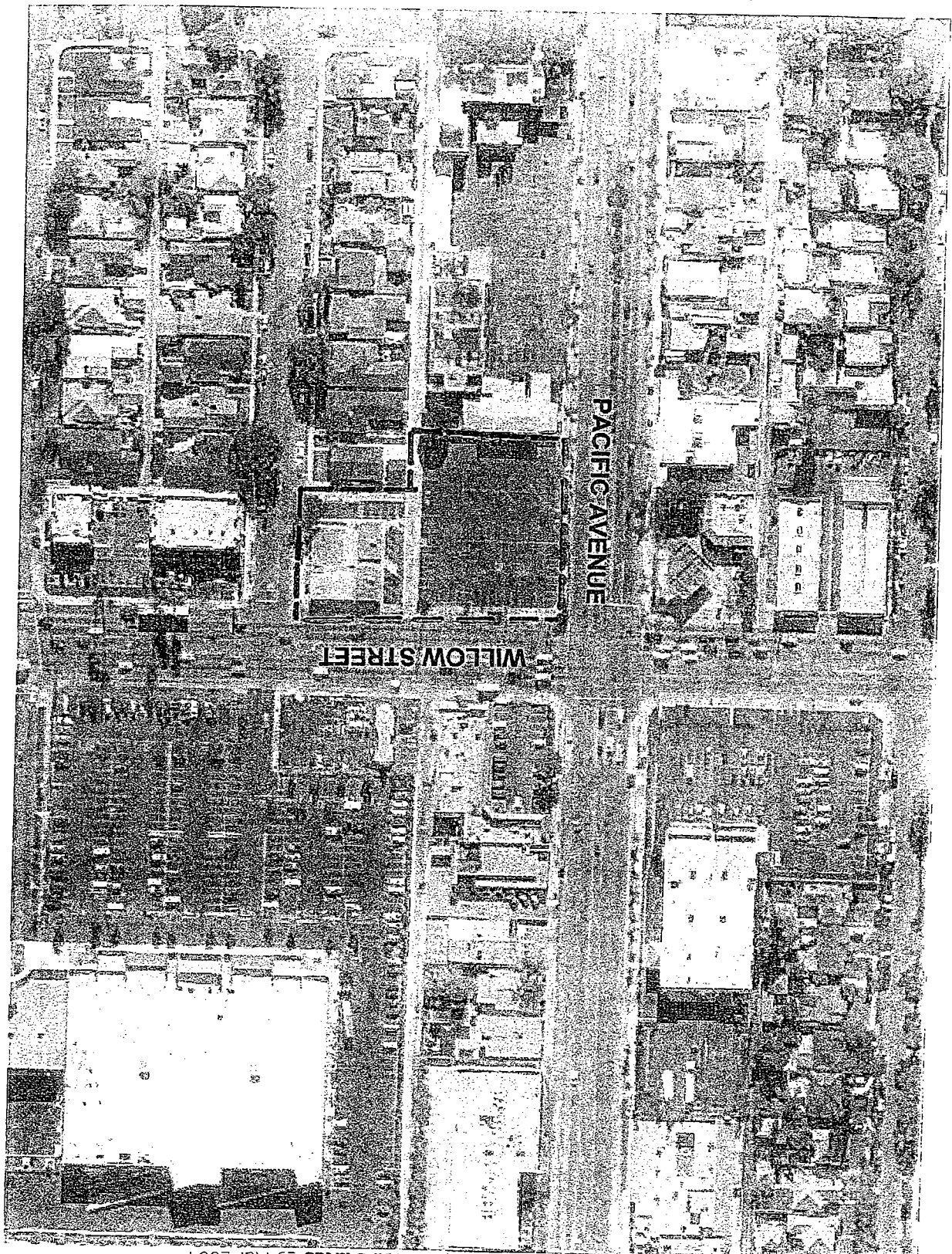
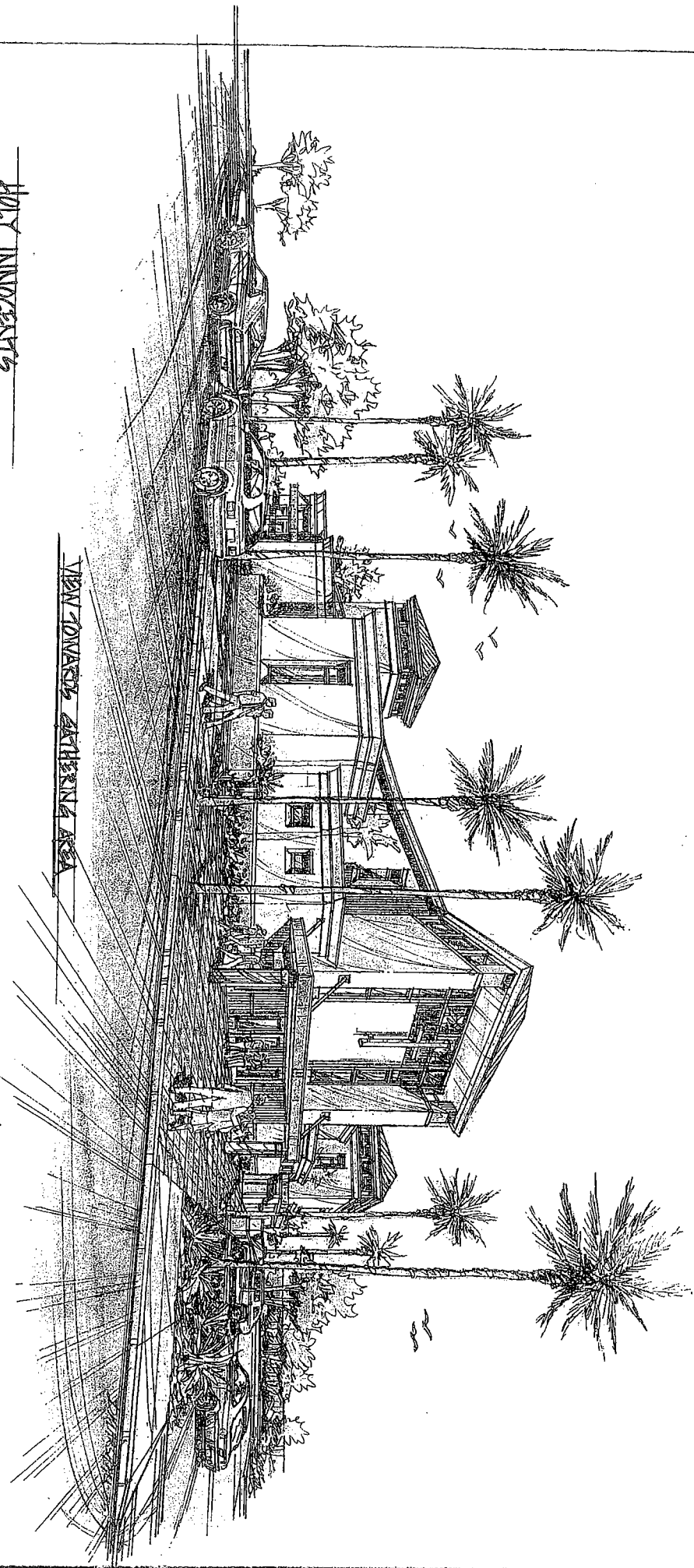


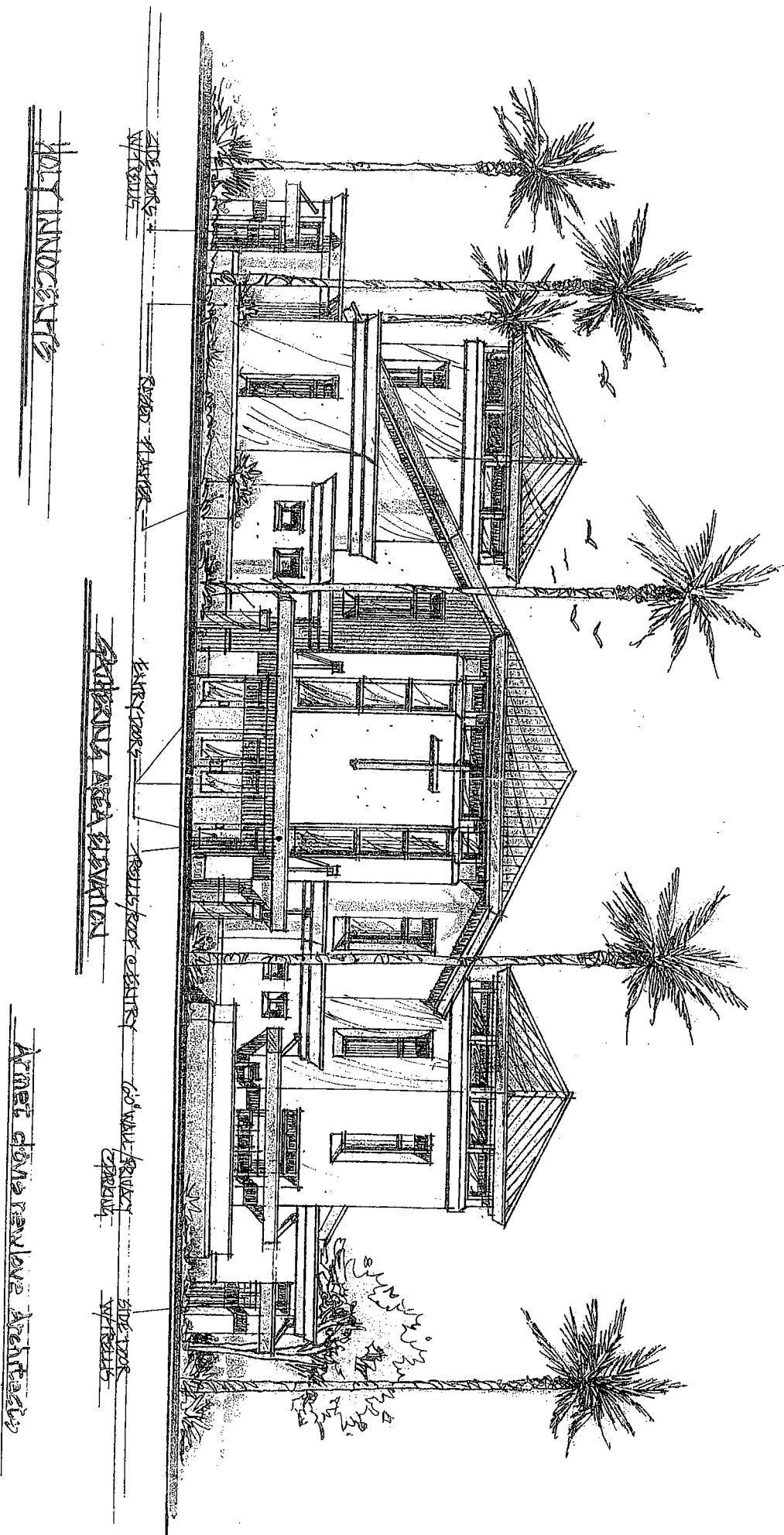
Image courtesy of the U.S. Geological Survey
© 2004 Microsoft Corporation. Terms of Use Privacy Statement

HOLY INNOCENTS

VIEW TOWARDS CATHERINA AREA

Amat Davis Hayward Architects.





DECK
W/RAILS

ROOF - 1st FLOOR

RAISING ROOF

RAISES FOOT CEILING

60' WIDE FRONT
CORRIDOR

SIDE ROOF
W/RAILS

W/ TILED ROOF

EXTERIOR AREA ELEVATION

AREA OF OLD REVOLVED ARCHITECTURE

Send To Printer Back To TerraServer Change to 11x17 Print Size Show Grid Lines Charge to Landscape ZUSCS Long Beach, California, United States 29 Mar 2004



Image courtesy of the U.S. Geological Survey © 2004 Microsoft Corporation Terms of Use Privacy Statement

Officer Daryle M. Black Memorial Park

